

# SPECIAL RELEASE

## Construction Materials Retail Price Index (CMRPI) in the National Capital Region (NCR) (2012=100)

**September 2022**

Date of Release: 08 November 2022

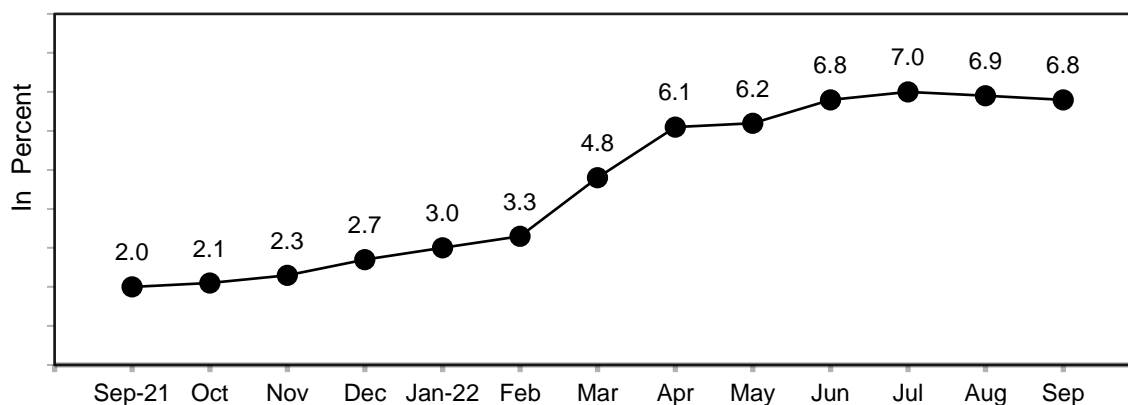
Reference No. 2022-443

**Table A. Year-on-Year Growth Rates of the CMRPI in NCR, All Items  
In Percent  
(2012=100)**

September 2021	August 2022	September 2022	Year-to-Date
2.0	6.9	6.8	5.6

Source: Retail Price Survey of Selected Commodities for the Generation of Construction Materials Retail Price Index, Philippine Statistics Authority

**Figure 1. Growth Rates of the CMRPI in NCR, All Items  
September 2021 – September 2022  
(2012=100)**



Source: Retail Price Survey of Selected Commodities for the Generation of Construction Materials Retail Price Index, Philippine Statistics Authority

## **CMRPI in NCR continues to increase at a slower pace in September 2022**

The annual increment of CMRPI decelerated to 6.8 percent in September 2022, from 6.9 percent in August 2022. This brings the average growth rate of the index from January to September 2022 to 5.6 percent. In September 2021, its annual growth rate was lower at 2.0 percent. (Tables A and 2)

The deceleration of CMRPI was primarily due to the lower annual growths in the indices of plumbing materials at 6.9 percent; tinsmithry materials at 8.8 percent; and masonry materials at 4.2 percent.

On the other hand, relative to their respective August 2022 annual increases, higher annual mark-ups were noted in the indices of electrical materials and miscellaneous construction materials at 4.5 percent and 11.0 percent, respectively.

Meanwhile, the indices of carpentry materials and painting materials and related compounds retained their respective August 2022 growth rates of 2.9 percent and 5.7 percent. (Table 2)

**DENNIS S. MAPA, Ph.D.**

Undersecretary

National Statistician and Civil Registrar General

*DGLDP/SCDG/GGP*