



SPECIAL RELEASE

Construction Materials Retail Price Index (CMRPI) in the National Capital Region (NCR) (2012=100)

August 2022

Date of Release: 25 October 2022

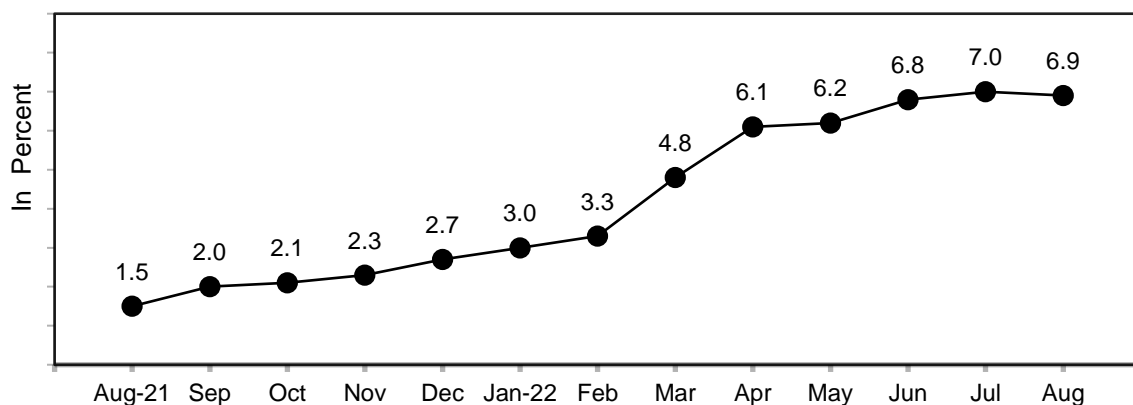
Reference No. 2022-426

**Table A. Year-on-Year Growth Rates of the CMRPI in NCR, All Items
 In Percent
 (2012=100)**

August 2021	July 2022	August 2022	Year-to-Date
1.5	7.0	6.9	5.5

Source: Retail Price Survey of Selected Commodities for the Generation of Construction Materials Retail Price Index, Philippine Statistics Authority

**Figure 1. Growth Rates of the CMRPI in NCR, All Items
 August 2021 – August 2022
 (2012=100)**



Source: Retail Price Survey of Selected Commodities for the Generation of Construction Materials Retail Price Index, Philippine Statistics Authority



CMRPI in NCR slightly declined in August 2022

The annual increment of CMRPI eased to 6.9 percent in August 2022, after 13 consecutive months of acceleration. This brings the average growth rate of the index from January to August 2022 to 5.5 percent. In August 2021, its annual growth rate was lower at 1.5 percent. (Tables A and 2)

The downtrend of CMRPI in NCR was mainly brought about by the lower annual growths in the indices of plumbing materials at 7.5 percent; tinsmithry materials at 9.0 percent; and carpentry materials at 2.9 percent.

On the other hand, relative to their respective July 2022 annual increases, higher annual mark-ups were noted in the indices of masonry materials and miscellaneous construction materials at 4.5 percent and 10.9 percent, respectively.

Meanwhile, the indices of electrical materials and painting materials and related compounds retained their respective July 2022 rates. (Table 2)

DENNIS S. MAPA, Ph.D.

Undersecretary

National Statistician and Civil Registrar General

DGLDP/SCDG/GGP