



SPECIAL RELEASE

Construction Materials Retail Price Index (CMRPI) in the National Capital Region (NCR) (2012=100)

January 2023

Date of Release: 17 February 2023

Reference No. 2023-SSO-024

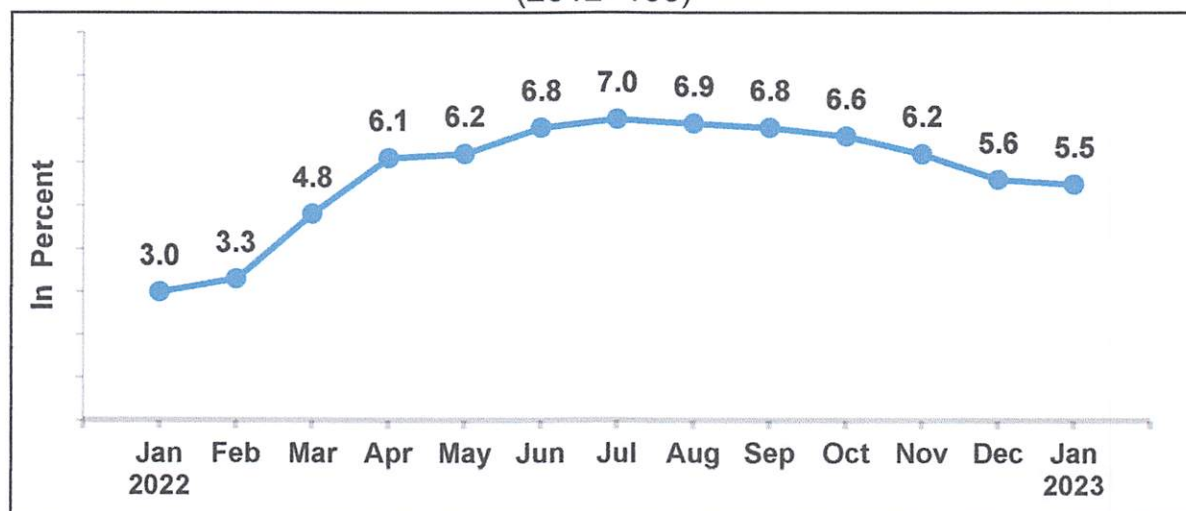
Table A. Year-on-Year Growth Rates
of the Construction Materials Retail Price Index in NCR
All Items, In Percent
(2012=100)

January 2022	December 2022	January 2023	Year-to-Date*
3.0	5.6	5.5	5.5

*Year-on-year change of CMRPI for January 2023 vs. 2022

Source: Philippine Statistics Authority, Retail Price Survey of Selected Commodities for the Generation of Construction Materials Retail Price Index

Figure 1. Year-on-Year Growth Rates
of Construction Materials Retail Price Index in NCR
All Items, In Percent
(2012=100)



Source: Philippine Statistics Authority, Retail Price Survey of Selected Commodities for the Generation of Construction Materials Retail Price Index



Management System
ISO 9001:2015
www.tuv.com
ID: 2152640291



PSA Complex, East Avenue, Diliman, Quezon City, Philippines 1101
Telephone: (632) 8938-5267
www.psa.gov.ph

Construction Materials Retail Price Index (CMRPI) in National Capital Region (NCR) continued to increase at a slower pace in January 2023

The year-on-year increment of the CMRPI in NCR decelerated further to 5.5 percent in January 2023 from 5.6 percent in December 2022. In January 2022, its annual growth rate stood at 3.0 percent. (Figure 1 and Tables A, 2, and 4)

The downtrend of CMRPI in NCR was mainly influenced by the lower annual growth rate in the index of plumbing materials at 4.4 percent during the month from 5.0 percent in December 2022. This was followed by the miscellaneous construction materials index at 8.5 percent annual rate in January 2023 from 8.9 percent annual hike in December 2022, and the masonry materials index with an annual increment of 3.6 percent in January 2023 from 4.4 percent in the previous month. A lower annual hike was also observed in the index of electrical materials at 3.1 percent during the period.

On the contrary, higher annual mark-ups were observed in the indices of carpentry materials at 3.5 percent and tinsmithry materials at 7.1 percent during the month.

Meanwhile, the index of painting materials and related compounds continued to move at its previous month's annual rate of 5.2 percent. (Tables 2 and 4)



DIVINA GRACIA L. DEL PRADO, Ph.D.

(Assistant National Statistician)

Officer-in-Charge, Deputy National Statistician

Sectoral Statistics Office



RCL/GGP/LBDC