

ISSN-2012-0362



REPUBLIC OF THE PHILIPPINES

PHILIPPINE STATISTICS AUTHORITY

2019 SELECTED STATISTICS ON AGRICULTURE



SELECTED STATISTICS ON AGRICULTURE 2019



REPUBLIC OF THE PHILIPPINES
PHILIPPINE STATISTICS AUTHORITY
SOLID • RESPONSIVE • WORLD-CLASS



REPUBLIC OF THE PHILIPPINES

HIS EXCELLENCY
PRESIDENT RODRIGO R. DUTERTE



PHILIPPINE STATISTICS AUTHORITY

CLAIRE DENNIS S. MAPA, Ph.D.

Undersecretary
National Statistician and Civil Registrar General

ROSALINDA P. BAUTISTA

Assistant Secretary
Deputy National Statistician
Sectoral Statistics Office

ISSN-2012-0362

Selected Statistics on Agriculture is a publication of the Philippine Statistics Authority (PSA). The PSA reserves exclusive right to reproduce this publication in whatever form. Should any portion of this publication be included in a report/article, the title of the publication and the PSA should be cited as the source of the data. The PSA will not be responsible for any information derived from the processing of data contained in this publication.

FOREWORD

The 2019 Selected Statistics on Agriculture (SSA) is the 30th issue of the annual statistical report published by the Philippine Statistics Authority (PSA). It provides a five-year data series (2014-2018) for selected macroeconomic indicators and agricultural production by subsector and by commodity, including statistics on production costs and returns, price and trade, and supply utilization accounts. Through this report, the PSA consolidates statistics and indicators that can respond to the needs of our data users.

The 30th issue of SSA can be downloaded from www.psa.gov.ph and is available in printed copies.

As the PSA strives to improve its statistical products and services, we welcome comments and feedback on the contents and format of this publication.



CLAIRE DENNIS S. MAPA, Ph.D.

Undersecretary

National Statistician and Civil Registrar General

Quezon City, Philippines
August 2019

ACKNOWLEDGMENT

Our appreciation and gratitude go to the following agencies for their cooperation and support in sharing with us their data: *Asian Development Bank (ADB), National Meat Inspection Service (NMIS), Bangko Sentral ng Pilipinas (BSP), Department of Budget and Management (DBM), Food and Agriculture Organization (FAO), Fertilizer and Pesticide Authority (FPA), Philippine Fiber Industry Development Authority (PhilFIDA), National Food Authority (NFA), National Irrigation Administration (NIA), Philippine Coconut Authority (PCA), Sugar Regulatory Administration (SRA) and World Bank (WB).*

TABLE OF CONTENTS

	Page/s
Foreword	i
Acknowledgment	ii
Table of Contents	iii
Explanatory Notes	iv
An Overview of the Philippine Agricultural Economy	1
Selected Macroeconomic and Agriculture Sector Statistics	4
Crops Subsector Statistics	8
Livestock & Poultry Subsector Statistics	18
Fisheries Subsector Statistics	24
Production Costs and Returns	30
Price Statistics	34
Agricultural Foreign Trade Statistics	42
Supply Utilization Accounts	54

EXPLANATORY NOTES

1. Sources of basic data are indicated at the bottom of each table.
2. Unless otherwise indicated, year refers to calendar year.
3. As a rule, figures from source publications were copied to the extent possible. In some instances, however, figures were rounded-off or combined.
4. Figures may not add up to the totals due to rounding off.
5. Yield per hectare is derived prior to rounding-off the data on production and hectareage.
6. The following symbols and abbreviations are used in the tables:

---	<i>Data not yet available</i>
-	<i>None</i>
<i>R</i>	<i>Revised</i>
<i>P</i>	<i>Preliminary</i>
<i>mt</i>	<i>Metric Ton</i>
<i>ha(s)</i>	<i>Hectare/s</i>
<i>kg</i>	<i>Kilogram</i>
<i>GNI</i>	<i>Gross National Income</i>
<i>GVA</i>	<i>Gross Value Added</i>
<i>GDP</i>	<i>Gross Domestic Product</i>
<i>FOB</i>	<i>Freight on Board</i>
<i>CIF</i>	<i>Cost Insurance Freight</i>
<i>NFD</i>	<i>Net Food Disposable</i>
<i>CPH</i>	<i>Census of Population and Housing</i>

AN OVERVIEW OF THE PHILIPPINE AGRICULTURAL ECONOMY

Economic Performance. The country's Gross Domestic Product (GDP) increased by 6.2 percent in 2018. The Gross Value Added (GVA) in the agriculture and fishing sector recorded a 0.8 percent increment during the year. This sector contributed 8.1 percent to the GDP.

Production Performance in Agriculture. Agriculture grew by 0.59 percent in 2018. Gains in production were noted in livestock and poultry while declines in outputs were registered in crops and fisheries. Crops registered a 0.99 percent reduction in output. Palay and corn suffered as production dropped by 1.09 percent and 1.81 percent, respectively. Sugarcane production declined by 15.56 percent. Coconut posted a 4.82 percent growth in output. Increases in production were noted in the other crops such as banana, pineapple, peanut, mongo, tomato, eggplant, abaca and rubber. Meanwhile, downtrends in outputs continued in coffee, mango, tobacco, cabbage and calamansi.

Livestock production increased by 1.90 percent in 2018. Hog and dairy came up with corresponding output gains of 2.42 percent and 4.11 percent. In contrast, production of carabao, cattle and goat went down by 0.88 percent, 1.12 percent and 0.50 percent, respectively. Poultry recorded a 5.75 percent increment in production. Chicken production maintained its uptrend of 5.20 percent while that of duck continuously declined by 0.92 percent. Egg production increased by 8.43 percent for chicken and by 2.60 percent for duck.

Fisheries recorded a 0.98 percent reduction in output. Downtrends in production were noted among the major species such as roundscad, yellowfin tuna, milkfish and tiger prawn.

Prices. In 2018, the prices received by farmers for their palay production were higher by an average of 12.03 percent than the previous year's record. Farmgate prices went up by 13.27 percent for white corngrain and by 20.78 percent for yellow corngrain. All livestock commodities exhibited increases in prices in 2018. Goat posted the highest price hike at 10.29 percent. For poultry, farmgate prices of chicken (broiler) grew by 8.59 percent while that of duck went up by 12.20 percent in 2018.

On the other hand, the prices paid by consumers for food and non-alcoholic beverages increased by an average of 6.8 percent.

Agricultural Trade. The country's earnings from agricultural exports, which accounted for 8.83 percent of the total exports revenue, declined by 7.02 percent in 2018. Fresh banana, coconut oil and tuna were the top agricultural export products. These contributed 48.27 percent to the total value of agricultural exports. The major export destinations were still China and Japan for fresh banana, United States of America (USA) and the Netherlands for coconut oil, and United Kingdom and Japan for tuna.

The 2018 expenditures for agricultural imports expanded by 19.89 percent. It shared 12.50 percent to the country's total value of imports. Wheat (including spelt) and meslin, soyabean oil/cake meal, and milk and cream and cream products recorded higher payments than their import values in the previous year. Collectively, these shared 28.34 percent to the total value of agricultural imports. USA was the top supplier of wheat (including spelt) and meslin and soyabean oil/cake meal. The bulk of the imports of milk and cream and products were sourced from New Zealand.

The Philippines continued to record a negative agricultural trade balance. While it sustained an agricultural trade surplus with Japan, it remained to register trade deficits with the other major trading partners such as Australia, ASEAN countries and the European Union. After a series of trade deficits, the country had trade surplus with the USA in 2018.

Employment. In 2018, a total of 43.46 million persons were in the country's labor force, of which 94.7 percent were employed. The agriculture sector employed 10.00 million persons and it represented a share of 24.30 percent to the national employment.

Agricultural Support Services. Government expenditures for the agriculture sector amounted to PhP 142.74 billion pesos in 2018. This was higher by 26.97 percent compared with last year's record. Agricultural expenditures accounted for 3.79 percent of the country's government expenditures.

Irrigated farmlands in 2018 totaled 1.92 million hectares and this comprised 61.39 percent of the estimated total irrigable area.



**SELECTED
MACROECONOMIC
AND AGRICULTURE
SECTOR STATISTICS**

**Table 1.1 MACROECONOMIC GROWTH INDICATORS,
PHILIPPINES, 2014-2018**

(Value at constant 2000 prices)

ITEM	2014	2015	2016R	2017R	2018
GNI (million pesos)	8,640,203	9,143,155	9,755,720	10,394,346	11,010,252
<i>Growth Rate (%)</i>	6.0	5.8	6.7	6.5	5.9
GDP (million pesos)	7,165,478	7,600,175	8,123,375	8,665,818	9,206,889
<i>Growth Rate (%)</i>	6.1	6.1	6.9	6.7	6.2
GVA IN AGRICULTURE EXCLUDING FORESTRY					
(million pesos)	713,276	715,715	707,280	735,648	741,560
<i>Growth Rate (%)</i>					
<i>Agriculture Sector</i>	1.7	0.3	-1.2	4.0	0.8
<i>Crops</i>	2.4	-1.8	-3.2	6.5	-0.9
<i>Livestock</i>	1.0	3.8	4.6	1.1	1.9
<i>Poultry</i>	0.4	5.7	1.3	4.5	5.8
<i>Fishing</i>	-0.2	-1.8	-4.0	-0.9	-0.2
<i>Agricultural Activities and Services</i>	4.5	6.2	3.9	4.3	3.9

Source: PSA

**Table 1.1a PERFORMANCE OF AGRICULTURE BY SUBSECTOR,
PHILIPPINES, 2014-2018**

(Value at constant 2000 prices)

ITEM	2014	2015	2016R	2017R	2018
GROSS OUTPUT IN AGRICULTURE					
(million pesos)	787,607	789,735	779,037	809,940	814,695
<i>Growth Rate (%)</i>	1.34	0.27	-1.35	3.97	0.59
Crops (million pesos)	405,583	398,264	385,423	411,285	407,213
<i>Growth Rate (%)</i>	2.37	-1.80	-3.22	6.71	-0.99
Livestock (million pesos)	127,538	132,402	138,489	140,038	142,696
<i>Growth Rate (%)</i>	1.05	3.81	4.60	1.12	1.90
Poultry (million pesos)	115,164	121,804	123,488	129,192	136,625
<i>Growth Rate (%)</i>	0.29	5.77	1.38	4.62	5.75
Fisheries (million pesos)	139,323	137,265	131,637	129,425	128,162
<i>Growth Rate (%)</i>	-0.43	-1.48	-4.10	-1.68	-0.98

Source: PSA

Table 1.2 POPULATION, LABOR FORCE AND EMPLOYMENT, AND WAGE RATE, PHILIPPINES, 2014-2018

ITEM	2014	2015	2016	2017	2018
POPULATION (million persons) ^{1/}	99.88	100.98	103.24	104.92	106.60
LABOR FORCE (million persons) ^{2/}	41.38	41.34	43.36	42.78	43.46
Employment	38.65	38.74	41.00	40.33	41.16
Agriculture	11.80	11.29	11.06	10.26	10.00
Unemployment	2.73	2.60	2.36	2.44	2.30
WAGE RATE IN AGRICULTURE (pesos per day)					
Nominal	249.00	267.88	276.03	280.37	---
Real	178.44	189.32	191.69	251.45	---

1/ 2014, 2016 to 2018 are 2010 Census-based population projections;

2015 Census of Population result

2/ Starting 2016, the Labor Force Survey adopted the 2013 Master Sample Design as well as the population projections based on the 2010 CPH while previous survey rounds used the 2000 CPH population projections.

Source: PSA

Table 1.3 PESO EXCHANGE RATE, INFLATION RATE AND PURCHASING POWER, PHILIPPINES, 2014-2018

ITEM	2014	2015	2016	2017	2018
OFFICIAL EXCHANGE RATE (pesos per US dollar)	44.40	45.50	47.49	50.40	52.66
HEADLINE INFLATION RATE (%) ^{3/}	3.6	0.7	1.3	2.9	5.2
PURCHASING POWER OF PESO	0.94	0.93	0.92	0.90	0.85

3/ 2012 as base year

Source: BSP and PSA

Table 1.4 SHARE OF AGRICULTURE IN THE NATIONAL GOVERNMENT EXPENDITURES, PHILIPPINES, 2014-2018

ITEM	2014	2015	2016	2017R	2018
NATIONAL GOVERNMENT					
(million pesos)	2,019,062	2,414,641	2,682,815	3,315,325	3,767,000
AGRICULTURE					
(million pesos)	86,807	99,788	99,688	112,420	142,740
AGRICULTURE TO NATIONAL GOVERNMENT RATIO (%)	4.30	4.13	3.72	3.39	3.79

Source: DBM

Table 1.5 SUPPLY OF FERTILIZER (All Grades) BY SOURCE, PHILIPPINES, 2014-2018

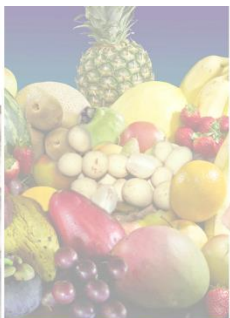
ITEM	2014	2015R	2016R	2017R	2018
TOTAL SUPPLY ('000 mt)	2,710.6	2,479.2	2,659.8	3,831.6	3,150.0
Production ('000 mt)	388.7	27.4	261.9	462.2	781.3
Production to Total Supply Ratio (%)	14.3	1.1	9.8	12.1	24.8
Import ('000 mt)	2,321.9	2,451.8	2,397.9	3,369.4	2,368.7
Import to Total Supply Ratio (%)	85.7	98.9	90.2	87.9	75.2

Source: FPA

Table 1.6 SHARE OF SERVICE AREA TO TOTAL IRRIGABLE AREA, PHILIPPINES, 2014-2018

ITEM	2014	2015	2016	2017	2018
SERVICE AREA (million ha)	1.71	1.73	1.86	1.89	1.92
SERVICE AREA TO TOTAL IRRIGABLE AREA RATIO (%)	56.57	57.33	59.32	60.35	61.39

Source: NIA



**CROPS
SUBSECTOR
STATISTICS**

**Table 2.1 CROPS: VOLUME OF PRODUCTION,
PHILIPPINES, 2014-2018**

ITEM	2014	2015	2016	2017	2018
	('000 mt)				
TOTAL	87,007.9	84,324.6	81,631.9	91,552.5	87,499.2
Palay	18,967.8	18,149.8	17,627.2	19,276.3	19,066.1
Corn	7,770.6	7,518.8	7,218.8	7,914.9	7,771.9
Coconut	14,696.3	14,735.2	13,825.1	14,049.1	14,726.2
Sugarcane	25,029.9	22,926.4	22,370.5	29,286.9	24,730.8
Banana	8,884.9	9,083.9	8,903.7	9,166.3	9,358.8
Pineapple	2,507.1	2,582.7	2,612.5	2,671.7	2,731.0
Coffee	75.5	72.3	68.8	62.1	60.3
Mango	885.0	902.7	814.1	737.0	711.7
Tobacco	61.4	56.2	56.5	51.0	50.4
Abaca	68.1	70.4	71.8	68.8	71.5
Peanut	29.2	29.2	27.9	29.4	29.4
Mongo	32.1	33.6	34.0	35.3	36.7
Cassava	2,540.3	2,714.3	2,755.1	2,806.7	2,723.0
Sweet Potato	519.9	536.0	529.5	537.3	525.6
Tomato	214.6	214.8	210.7	218.8	220.8
Garlic	9.0	10.4	7.5	7.8	7.6
Onion	203.7	181.2	122.6	184.4	172.7
Cabbage	128.0	125.8	123.1	122.5	120.7
Eggplant	225.6	232.9	235.6	241.9	244.8
Calamansi	160.7	162.7	118.2	116.7	113.6
Rubber	453.1	398.1	362.6	407.0	423.4
Others	3,545.3	3,587.1	3,535.9	3,560.5	3,602.3

Source: PSA

**Table 2.2 CROPS: AREA PLANTED/HARVESTED, ^{1/}
PHILIPPINES, 2014-2018**

ITEM	2014	2015	2016	2017	2018
	('000 has)				
TOTAL	13,354.1	13,229.3	13,091.2	13,507.9	13,476.1
Palay	4,739.7	4,656.2	4,556.0	4,811.8	4,800.4
Corn	2,611.4	2,561.9	2,484.5	2,552.6	2,511.4
Coconut	3,502.0	3,517.7	3,565.1	3,612.3	3,628.1
Sugarcane	432.0	421.3	410.1	437.5	437.5
Banana	442.8	443.4	442.9	446.8	447.9
Pineapple	61.6	62.8	65.2	66.0	66.2
Coffee	117.5	113.7	114.8	112.8	113.4
Mango	188.1	188.4	187.8	186.0	185.9
Tobacco	36.1	33.1	32.5	30.8	28.2
Abaca	134.8	134.2	134.4	132.5	132.3
Peanut	25.0	24.6	23.5	23.8	23.9
Mongo	43.0	41.5	41.3	41.9	41.6
Cassava	216.8	223.0	229.8	234.5	227.6
Sweet Potato	89.0	85.8	84.8	85.0	84.0
Tomato	16.7	16.2	16.2	16.5	16.5
Garlic	2.6	2.7	2.6	2.6	2.7
Onion	15.8	14.9	13.0	18.3	17.9
Cabbage	8.3	8.2	8.0	7.9	7.8
Eggplant	21.2	21.0	21.0	21.4	21.7
Calamansi	20.1	20.0	19.8	19.8	19.8
Rubber	217.7	222.6	223.3	226.3	228.9
Others	412.0	416.0	414.5	420.8	432.4

^{1/} Area planted for permanent crops and area harvested for temporary crops.

Source: PSA

Table 2.3 CROPS: VALUE OF PRODUCTION, PHILIPPINES, 2014-2018

ITEM	2014	2015	2016R	2017R	2018
	(million pesos, at current prices)				
TOTAL	926,051.6	857,197.5	882,691.8	965,531.4	1,002,411.4
Palay	378,218.5	311,088.2	304,598.8	350,152.1	385,008.5
Corn	100,551.6	92,480.7	85,326.4	94,257.2	109,161.7
Coconut	104,931.6	96,073.4	108,665.1	120,700.6	91,768.4
Sugarcane	40,047.8	43,101.7	44,517.4	44,091.2	40,763.4
Banana	130,696.3	136,349.8	147,445.0	147,682.4	158,837.4
Pineapple	19,730.9	20,945.7	23,564.5	25,488.8	27,200.3
Coffee	5,785.9	5,686.8	5,715.1	5,798.2	5,466.1
Mango	19,355.8	20,383.9	23,208.7	28,937.8	27,032.9
Tobacco	4,333.0	3,726.8	3,914.1	3,800.2	4,053.9
Abaca	2,948.1	3,315.9	4,233.5	4,413.0	4,982.8
Peanut	1,072.9	1,177.1	1,092.0	1,184.9	1,248.1
Mongo	1,619.7	1,824.0	1,672.3	1,888.3	2,062.5
Cassava	16,664.1	14,711.8	17,495.2	19,904.0	17,862.1
Sweet Potato	7,158.4	7,804.1	7,936.8	8,541.1	8,959.0
Tomato	2,439.7	2,888.7	3,310.4	3,578.3	3,860.5
Garlic	936.2	1,040.2	385.2	665.2	714.0
Onion	4,887.6	3,684.0	4,354.5	5,447.6	6,743.9
Cabbage	1,944.1	2,564.1	2,606.8	2,134.3	2,932.9
Eggplant	4,110.0	3,826.0	4,191.8	5,146.3	6,572.6
Calamansi	2,890.1	2,528.0	2,001.9	1,922.4	2,454.8
Rubber	11,416.9	8,102.1	8,630.5	11,212.1	9,851.5
Others	64,312.4	73,894.7	77,825.7	78,585.3	84,874.0

Source: PSA

Table 2.4 MAJOR CROPS: PERCENTAGE DISTRIBUTION OF PRODUCTION BY REGION, PHILIPPINES, 2018

REGION	PALAY	CORN	COCONUT	SUGARCANE
PHILIPPINES ('000 mt)	19,066.1	7,771.9	14,726.2	24,730.8
LUZON (%)	58.26	40.75	26.37	12.58
CAR	2.05	2.67	0.01	0.12
Ilocos Region	9.02	7.22	0.29	0.08
Cagayan Valley	12.48	20.91	0.50	1.61
Central Luzon	18.96	3.50	0.73	3.11
CALABARZON	2.20	1.18	11.41	6.75
MIMAROPA Region	6.46	1.67	5.37	-
Bicol Region	7.08	3.60	8.06	0.91
VISAYAS (%)	18.30	6.60	13.78	70.57
Western Visayas	11.71	4.00	3.32	59.42
Central Visayas	1.62	1.64	3.02	9.88
Eastern Visayas	4.97	0.95	7.44	1.27
MINDANAO (%)	23.44	52.66	59.85	16.84
Zamboanga Peninsula	3.82	3.33	12.03	a/
Northern Mindanao	3.99	16.59	12.49	12.41
Davao Region	2.56	3.53	13.12	1.59
SOCCSKSARGEN	7.04	15.84	7.72	2.38
Caraga	2.68	1.75	5.40	a/
ARMM	3.35	11.61	9.09	0.46

a/ Less than 0.005

Source: PSA

Table 2.4a MAJOR CROPS: PERCENTAGE DISTRIBUTION OF PRODUCTION BY REGION, PHILIPPINES, 2018

REGION	PINEAPPLE	BANANA	MANGO	COFFEE
PHILIPPINES ('000 mt)	2,731.0	9,358.8	711.7	60.3
LUZON (%)	10.53	8.10	45.08	11.14
CAR	0.03	0.22	0.38	3.65
Ilocos Region	0.01	0.45	23.55	0.26
Cagayan Valley	1.42	3.70	6.68	1.46
Central Luzon	0.07	0.54	6.21	1.72
CALABARZON	3.44	1.23	5.73	3.41
MIMAROPA Region	0.02	1.11	2.21	0.26
Bicol Region	5.54	0.84	0.33	0.38
VISAYAS (%)	1.16	7.95	17.30	7.41
Western Visayas	0.65	3.23	6.89	7.00
Central Visayas	0.22	2.22	10.33	0.32
Eastern Visayas	0.29	2.50	0.07	0.10
MINDANAO (%)	88.31	83.95	37.63	81.45
Zamboanga Peninsula	0.04	2.77	11.00	0.84
Northern Mindanao	57.57	20.85	7.12	9.52
Davao Region	0.98	37.99	7.50	17.96
SOCCSKSARGEN	29.59	12.91	7.37	33.00
Caraga	0.11	3.09	2.60	2.76
ARMM	0.03	6.34	2.03	17.37

Source: PSA

Table 2.5 PALAY: PRODUCTION, AREA HARVESTED AND YIELD PER HECTARE BY ECOSYSTEM AND SEMESTER, PHILIPPINES, 2014-2018

ITEM	2014	2015	2016	2017	2018
PRODUCTION (million mt)					
TOTAL	18.97	18.15	17.63	19.28	19.07
<i>Irrigated</i>	14.41	13.94	13.54	14.56	14.35
<i>Rainfed</i>	4.56	4.21	4.09	4.72	4.72
JANUARY-JUNE	8.38	8.32	7.65	8.57	8.71
<i>Irrigated</i>	6.87	6.92	6.48	7.01	7.10
<i>Rainfed</i>	1.51	1.40	1.17	1.56	1.62
JULY-DECEMBER	10.59	9.83	9.98	10.71	10.35
<i>Irrigated</i>	7.54	7.02	7.06	7.55	7.25
<i>Rainfed</i>	3.05	2.81	2.92	3.16	3.10
AREA HARVESTED (million ha)					
TOTAL	4.74	4.66	4.56	4.81	4.80
<i>Irrigated</i>	3.25	3.23	3.18	3.30	3.29
<i>Rainfed</i>	1.49	1.42	1.37	1.52	1.51
JANUARY-JUNE	2.10	2.06	1.93	2.10	2.13
<i>Irrigated</i>	1.54	1.53	1.47	1.55	1.56
<i>Rainfed</i>	0.56	0.53	0.46	0.54	0.56
JULY-DECEMBER	2.64	2.59	2.63	2.72	2.67
<i>Irrigated</i>	1.72	1.70	1.71	1.74	1.72
<i>Rainfed</i>	0.92	0.89	0.92	0.97	0.95
YIELD PER HECTARE (mt)					
TOTAL	4.00	3.90	3.87	4.01	3.97
<i>Irrigated</i>	4.43	4.31	4.26	4.42	4.37
<i>Rainfed</i>	3.07	2.96	2.97	3.11	3.12
JANUARY-JUNE	3.99	4.04	3.96	4.09	4.10
<i>Irrigated</i>	4.47	4.51	4.40	4.52	4.54
<i>Rainfed</i>	2.69	2.65	2.55	2.87	2.86
JULY-DECEMBER	4.01	3.79	3.80	3.94	3.87
<i>Irrigated</i>	4.39	4.13	4.13	4.33	4.21
<i>Rainfed</i>	3.30	3.14	3.18	3.25	3.27

Source: PSA

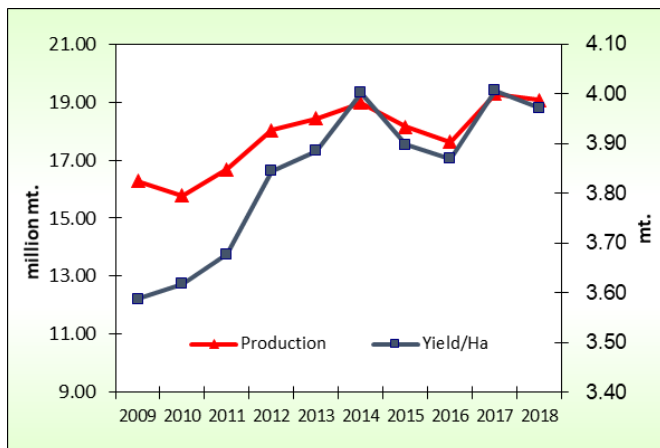


Figure 1. Palay: Production and Yield per Hectare, Philippines, 2009-2018

Table 2.6 CORN: PRODUCTION, AREA HARVESTED AND YIELD PER HECTARE BY CROPTYPE AND SEMESTER, PHILIPPINES, 2014-2018

ITEM	2014	2015	2016	2017	2018
PRODUCTION (million mt)					
TOTAL	7.77	7.52	7.22	7.91	7.77
<i>White</i>	2.26	2.13	2.02	2.10	2.15
<i>Yellow</i>	5.51	5.38	5.20	5.81	5.63
JANUARY-JUNE	3.48	3.38	2.83	3.70	3.76
<i>White</i>	0.81	0.76	0.52	0.74	0.78
<i>Yellow</i>	2.67	2.62	2.31	2.95	2.98
JULY-DECEMBER	4.29	4.14	4.39	4.22	4.01
<i>White</i>	1.46	1.37	1.51	1.36	1.37
<i>Yellow</i>	2.83	2.76	2.88	2.86	2.65
AREA HARVESTED (million ha)					
TOTAL	2.61	2.56	2.48	2.55	2.51
<i>White</i>	1.29	1.27	1.17	1.17	1.15
<i>Yellow</i>	1.32	1.30	1.31	1.38	1.36
JANUARY-JUNE	1.10	1.05	0.90	1.10	1.11
<i>White</i>	0.46	0.44	0.35	0.41	0.42
<i>Yellow</i>	0.63	0.60	0.55	0.69	0.69
JULY-DECEMBER	1.52	1.52	1.58	1.46	1.40
<i>White</i>	0.83	0.82	0.83	0.76	0.73
<i>Yellow</i>	0.69	0.69	0.76	0.69	0.67
YIELD PER HECTARE (mt)					
TOTAL	2.98	2.93	2.91	3.10	3.09
<i>White</i>	1.75	1.69	1.72	1.79	1.86
<i>Yellow</i>	4.17	4.15	3.97	4.22	4.14
JANUARY-JUNE	3.18	3.24	3.14	3.37	3.37
<i>White</i>	1.74	1.72	1.48	1.81	1.84
<i>Yellow</i>	4.23	4.36	4.18	4.31	4.31
JULY-DECEMBER	2.83	2.73	2.77	2.90	2.87
<i>White</i>	1.76	1.67	1.82	1.78	1.87
<i>Yellow</i>	4.11	3.98	3.81	4.12	3.97

Source: PSA

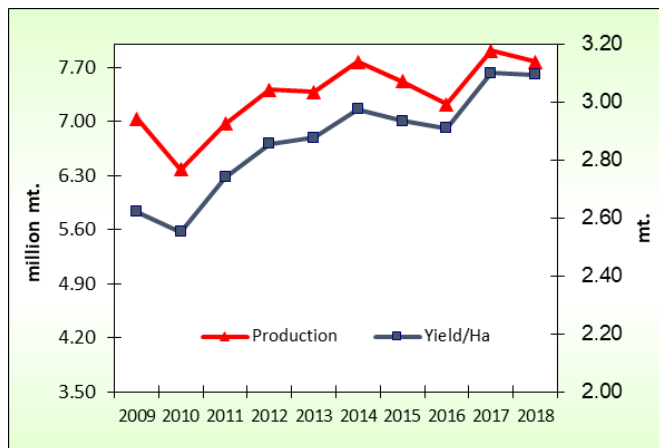


Figure 2. Corn: Production and Yield per Hectare, Philippines, 2009-2018



**LIVESTOCK AND
POULTRY
SUBSECTOR
STATISTICS**

**Table 3.1 LIVESTOCK AND POULTRY: VOLUME OF PRODUCTION
BY TYPE, PHILIPPINES, 2014-2018**

ITEM	2014	2015	2016	2017	2018
	('000 mt)				
LIVESTOCK (liveweight)	2,532.5	2,627.1	2,745.4	2,775.8	2,826.9
Carabao	143.0	142.0	144.7	144.4	143.1
Cattle	261.3	266.9	270.4	266.3	263.3
Hog	2,032.3	2,120.3	2,231.7	2,265.0	2,319.8
Goat	76.1	77.5	77.5	77.3	77.0
Dairy	19.7	20.4	21.2	22.8	23.7
POULTRY (liveweight)	1,606.4	1,694.8	1,706.7	1,777.0	1,867.5
Chicken	1,571.8	1,660.8	1,674.5	1,745.9	1,836.7
Duck	34.6	33.9	32.2	31.1	30.8
Egg	457.2	487.0	505.9	537.8	580.5
Chicken	415.7	444.6	461.7	492.4	533.9
Duck	41.5	42.4	44.2	45.4	46.6

Source: PSA

**Table 3.2 LIVESTOCK AND POULTRY: VALUE OF PRODUCTION
BY TYPE, PHILIPPINES, 2014-2018**

ITEM	2014	2015	2016	2017	2018
	(million pesos, at current prices)				
LIVESTOCK	247,776.2	251,991.3	258,356.3	291,595.4 R	321,524.4
Carabao	10,740.4	11,100.6	11,333.2	12,573.8	13,637.1
Cattle	23,641.5	24,594.6	25,867.9	26,587.7	28,351.8
Hog	204,124.5	206,711.3	211,315.9	241,935.2	267,998.9
Goat	8,648.2	8,931.9	9,124.1	9,689.4	10,627.1
Dairy	621.5	653.0	715.3	809.3	909.4
POULTRY	191,516.4	195,245.2	202,804.1	215,058.1 R	231,915.1
Chicken	144,900.7	145,935.9	149,801.2	156,892.0	170,983.8
Duck	2,806.8	2,835.4	2,695.8	2,872.8	3,125.1
Chicken egg	40,147.7	42,694.9	46,222.7	50,923.3	53,356.4
Duck egg	3,661.2	3,779.0	4,084.4	4,370.0	4,449.9

Source: PSA

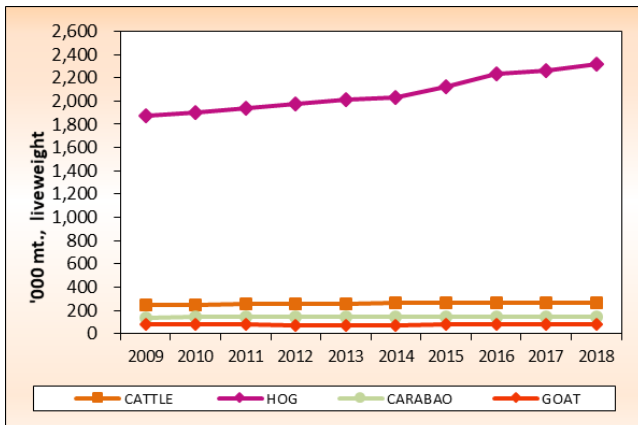


Figure 3a. Livestock: Volume of Production by Type, Philippines, 2009-2018

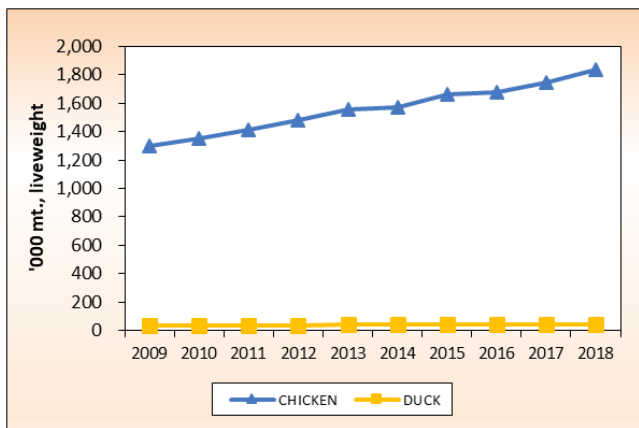


Figure 3b. Poultry: Volume of Production by Type, Philippines, 2009-2018

LIVESTOCK & POULTRY STATISTICS

Table 3.3 LIVESTOCK AND POULTRY: INVENTORY BY TYPE, PHILIPPINES, AS OF JANUARY 1, 2014-2019

ITEM	2014	2015	2016	2017	2018	2019
LIVESTOCK ('000 head)						
Carabao	2,847	2,855	2,877	2,882	2,883	2,874
<i>Dairy</i>	17	17	18	19	19	19
Cattle	2,512	2,534	2,554	2,548	2,554	2,535
<i>Dairy</i>	22	22	25	26	26	26
Hog	11,802	12,000	12,479	12,428	12,604	12,709
Goat	3,696	3,674	3,663	3,710	3,725	3,756
<i>Dairy</i>	1.9	2.0	2.1	2.4	2.6	2.6
POULTRY ('000 birds)						
Chicken	167,671	176,469	178,793	175,317	175,772	186,370
<i>Broiler</i>	61,582	66,617	65,713	62,444	59,903	64,217
<i>Layer</i>	30,007	31,254	32,227	34,474	35,569	38,811
<i>Native/Impoved</i>	76,082	78,598	80,853	78,399	80,300	83,342
Duck	9,886	10,067	10,519	10,842	11,220	11,577

Source: PSA

Table 3.4 LIVESTOCK AND POULTRY: TOTAL NUMBER OF HEAD/BIRDS SLAUGHTERED/DRESSED BY TYPE, PHILIPPINES, 2014-2018

ITEM	2014	2015	2016	2017	2018
NUMBER OF ANIMALS SLAUGHTERED ('000 head)					
Carabao	461	454	465	464 R	468
Cattle	859	877	894	886	885
Hog	25,061	25,844	26,730	27,142	27,713
Goat	3,161	3,240	3,266	3,273	3,274
NUMBER OF BIRDS DRESSED ('000 birds)					
Chicken ^{1/}	969,973	1,033,155	1,051,202	1,075,660 R	1,136,155
Duck	15,419	16,062	16,294	15,735	15,741

^{1/} Consists of dressed broiler, native chicken and culled layers only

Table 3.5 LIVESTOCK: PERCENTAGE DISTRIBUTION OF PRODUCTION BY REGION, PHILIPPINES, 2018

REGION	CARABAO	CATTLE	HOG	GOAT
PHILIPPINES ('000 mt)	143.1	263.3	2,319.8	77.0
LUZON (%)	34.96	45.32	54.24	40.85
CAR	2.01	1.52	1.15	1.05
Ilocos Region	6.69	10.36	4.08	14.71
Cagayan Valley	6.91	5.19	3.10	2.13
Central Luzon	4.14	6.60	20.37	11.19
CALABARZON	5.33	10.46	16.45	4.83
MIMAROPA Region	3.95	4.62	3.48	2.91
Bicol Region	5.94	6.56	5.61	4.04
VISAYAS (%)	28.62	19.78	19.81	22.37
Western Visayas	15.44	9.48	8.07	9.03
Central Visayas	5.78	9.48	8.38	12.40
Eastern Visayas	7.41	0.81	3.36	0.94
MINDANAO (%)	36.42	34.90	25.95	36.78
Zamboanga Peninsula	5.75	4.32	3.54	4.23
Northern Mindanao	6.83	14.53	8.48	9.77
Davao Region	9.03	4.98	6.67	7.88
SOCCKSARGEN	7.37	6.56	5.06	7.19
Caraga	1.77	0.54	1.75	1.16
ARMM	5.67	3.97	0.46	6.55

Table 3.6 POULTRY: PERCENTAGE DISTRIBUTION OF PRODUCTION BY REGION, PHILIPPINES, 2018

REGION	CHICKEN	CHICKEN EGGS	DUCK	DUCK EGGS
PHILIPPINES ('000 mt)	1,836.7	533.9	30.8	46.6
LUZON (%)	65.23	59.65	59.31	60.90
CAR	0.40	0.74	2.46	1.36
Ilocos Region	4.62	3.48	5.18	2.54
Cagayan Valley	3.15	2.68	7.94	6.31
Central Luzon	35.88	19.71	36.47	38.29
CALABARZON	18.02	29.28	2.15	7.74
MIMAROPA Region	0.59	1.24	1.16	1.08
Bicol Region	2.57	2.52	3.94	3.58
VISAYAS (%)	15.25	17.00	13.16	11.60
Western Visayas	5.99	6.43	9.76	10.03
Central Visayas	6.27	9.77	0.96	0.74
Eastern Visayas	2.99	0.80	2.44	0.84
MINDANAO (%)	19.52	23.36	27.53	27.49
Zamboanga Peninsula	1.86	2.53	0.93	3.56
Northern Mindanao	8.97	8.95	6.02	9.20
Davao Region	4.16	4.89	3.65	2.93
SOCCKSARGEN	3.37	4.84	13.81	8.53
Caraga	0.89	1.53	0.55	1.37
ARMM	0.28	0.61	2.59	1.90

Source: PSA



**FISHERIES
SUBSECTOR
STATISTICS**

FISHERIES STATISTICS

Table 4.1 FISHERIES: VOLUME OF PRODUCTION, PHILIPPINES, 2014-2018

ITEM	2014	2015	2016	2017	2018
	('000 mt)				
TOTAL	4,689.1	4,649.3	4,355.8	4,312.1	4,356.9
Commercial	1,107.2	1,084.6	1,016.9	948.3	946.4
Municipal	1,244.3	1,216.5	1,137.9	1,126.0	1,106.1
Marine	1,029.4	1,011.8	976.9	962.1	941.9
Inland	214.9	204.7	161.0	163.9	164.2
Aquaculture	2,337.6	2,348.2	2,200.9	2,237.8	2,304.4
Brackishwater Fishpond ^{1/}	322.7	325.6	340.6	347.5	329.7
Freshwater Fishcage/pen	150.4	155.6	154.2	158.5	160.9
Freshwater Fishpond ^{2/}	148.9	147.6	145.7	156.6	161.6
Marine Fishcage/pen	125.0	116.8	117.6	117.8	118.9
Others	1,590.6	1,602.6	1,442.8	1,457.4	1,533.3
Oyster	22.3	20.3	19.5	22.9	28.7
Mussel	18.8	15.9	18.8	19.2	26.3
Seaweed	1,549.5	1,566.4	1,404.5	1,415.3	1,478.3

^{1/} Includes brackishwater pen/cage

^{2/} Includes small farm reservoir and rice fish

Source: PSA

Table 4.2 FISHERIES: VALUE OF PRODUCTION, PHILIPPINES, 2014-2018

ITEM	2014	2015	2016	2017	2018
	(million pesos, at current prices)				
TOTAL	241,943.8	239,702.4	228,934.1	243,901.9	265,348.7
Commercial	66,189.8	64,875.3	58,866.6	59,716.3	61,044.9
Municipal	81,805.0	81,486.2	78,925.6	83,478.7	93,974.4
Marine	71,925.1	71,718.0	71,131.6	75,346.7	84,871.8
Inland	9,879.9	9,768.2	7,794.0	8,132.0	9,102.7
Aquaculture	93,949.0	93,340.9	91,141.9	100,706.8 R	110,329.3

Source: PSA

Table 4.3 FISHERIES: PERCENTAGE DISTRIBUTION OF PRODUCTION BY REGION, PHILIPPINES, 2018

REGION	MARINE	INLAND	AQUA-CULTURE
PHILIPPINES ('000 mt)	1,888.3	164.2	2,304.4
LUZON (%)	31.47	61.95	42.48
NCR - Metro Manila	4.51	-	0.81
CAR	-	0.68	0.14
Ilocos Region	1.43	1.07	5.49
Cagayan Valley	1.42	5.10	0.54
Central Luzon	2.39	9.97	10.76
CALABARZON	3.93	41.02	6.58
MIMAROPA Region	8.23	1.25	15.07
Bicol Region	9.56	2.86	3.09
VISAYAS (%)	17.52	5.27	13.32
Western Visayas	9.02	4.81	8.74
Central Visayas	4.16	0.12	3.16
Eastern Visayas	4.34	0.34	1.42
MINDANAO (%)	51.01	32.78	44.20
Zamboanga Peninsula	17.10	0.57	8.99
Northern Mindanao	3.97	2.74	3.17
Davao Region	1.40	0.15	1.10
SOCCSKSARGEN	15.56	11.98	0.56
Caraga	2.88	2.85	0.66
ARMM	10.10	14.49	29.72

Source: PSA

Table 4.4 FISHERIES: VOLUME OF PRODUCTION BY MAJOR SPECIES, PHILIPPINES, 2014-2018

SECTOR/ MAJOR SPECIES	2014	2015	2016	2017	2018
	('000 mt)				
MARINE SPECIES	2,136.6	2,096.4	1,993.9	1,910.4	1,888.3
Roundscad	260.6	225.1	211.8	183.1	171.3
Skipjack	233.9	233.5	220.1	247.6	258.4
Yellowfin tuna	139.9	143.4	103.0	106.9	94.4
Frigate tuna	134.1	137.7	133.9	122.1	111.9
Indian sardines	256.1	290.7	280.5	241.5	259.1
Fimbriated sardines	93.3	83.8	76.6	79.4	87.6
Big-eyed scad	116.4	116.8	112.8	109.2	110.9
Indian mackerel	78.2	74.1	63.3	60.1	55.8
Anchovies	71.9	64.0	55.8	50.2	48.7
Squid	55.7	53.0	52.1	49.9	47.3
Slipmouth	50.6	48.1	48.6	47.3	47.9
Eastern little tuna	35.5	34.7	36.9	37.1	37.0
Indo-pacific mackerel	39.6	38.9	38.3	35.5	31.2
Threadfin bream	38.8	39.2	39.7	39.6	36.3
Crevalle	35.8	35.3	35.3	29.4	28.3
Blue crab	27.2	25.9	28.3	30.8	33.5
Cavalla	28.0	28.9	25.1	24.0	23.7
Flying fish	19.4	18.5	17.2	15.2	15.7
Siganid	26.4	25.5	23.7	23.6	23.6
Snapper	18.5	17.2	15.8	16.9	14.4
Bigeye tuna	11.2	10.9	15.2	27.6	31.1
Other species	365.5	351.2	359.8	333.4	320.2
AQUACULTURE SPECIES	2,337.6	2,348.2	2,200.9	2,237.8	2,304.4
Milkfish	390.2	384.4	398.1	411.1	395.1
Tilapia	259.2	261.2	259.0	267.7	277.0
Tiger prawn	47.8	49.5	49.1	46.1	44.8
Carp	16.8	16.9	16.8	14.6	11.3
Oyster	22.4	20.3	19.5	23.0	28.7
Mussel	18.8	16.0	18.8	19.2	26.3
Seaweed	1,549.6	1,566.4	1,404.5	1,415.3	1,478.3

Table 4.4 FISHERIES: VOLUME OF PRODUCTION ..(Concluded)

SECTOR/ MAJOR SPECIES	2014	2015	2016	2017	2018
	('000 mt)				
Mud crab	16.2	16.2	16.9	18.1	20.8
Catfish	3.6	3.6	3.7	4.2	4.4
Other species	13.1	13.7	14.4	18.5	17.7
INLAND SPECIES	214.9	204.7	161.0	163.9	164.2
Tilapia	54.2	50.5	41.7	43.2	44.1
Carp	15.6	14.4	13.1	13.3	14.7
Snail	51.8	50.8	47.6	46.7	43.2
Mudfish	11.2	11.7	8.8	9.5	9.7
Gourami	6.4	5.7	4.3	4.2	4.0
Freshwater goby	5.7	4.0	3.3	3.0	2.9
Freshwater catfish (Hito)	6.2	6.3	5.7	5.7	5.8
Freshwater shrimp	5.4	5.2	3.1	3	3.4
Freshwater catfish (Kanduli)	1.8	2.0	1.8	2.3	1.8
Other fish species	43.5	42.0	20.3	22.4	22.6
Other crustaceans	5.4	5.2	4.9	5.0	5.5
Other molluscs	7.7	6.9	6.4	5.6	6.5

Source: PSA

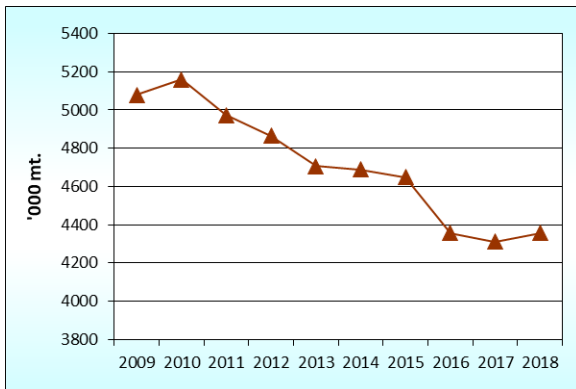


Figure 4. Fisheries: Volume of Production, Philippines, 2009-2018

Table 4.5 AQUACULTURE: VALUE OF PRODUCTION BY CULTURE ENVIRONMENT AND SPECIES, PHILIPPINES, 2014-2018

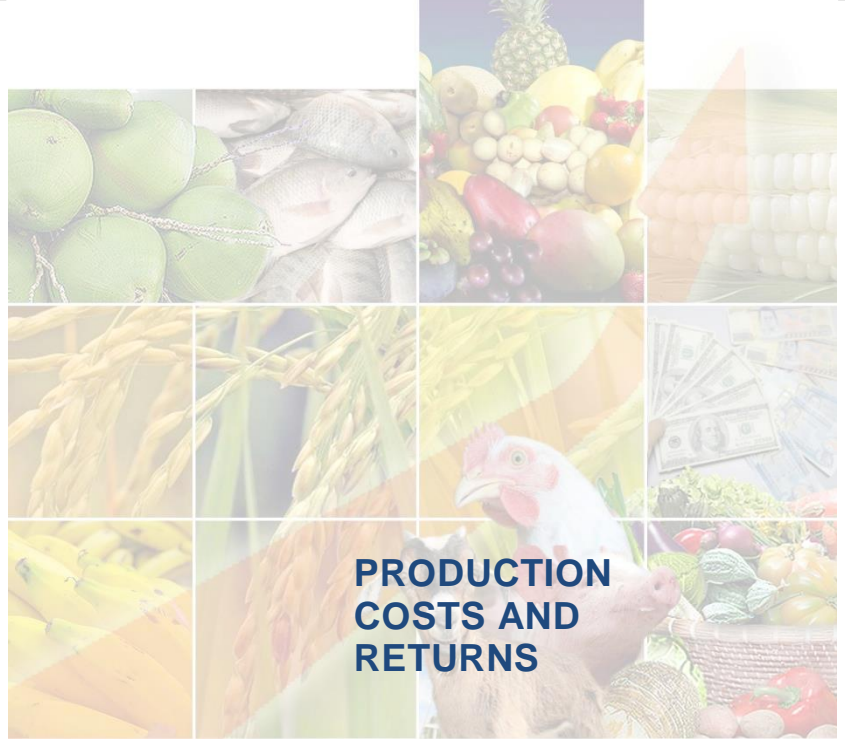
ENVIRONMENT/ SPECIES	2014	2015	2016	2017	2018
	(million pesos, at current prices)				
ALL TYPES OF ENVIRONMENT	93,949.0	93,340.9	91,142.0	100,706.8 R	110,329.3
Brackishwater					
Fishpond ^{1/}	48,713.7	50,661.9	52,110.1	55,686.4	59,495.4
Freshwater					
Fishcage/pen	10,534.9	10,882.8	10,375.4	11,838.5	12,579.7
Freshwater					
Fishpond ^{2/}	11,138.7	11,025.6	10,184.5	11,672.6	12,465.4
Marine					
Fishcage/pen	12,641.7	12,059.0	11,890.0	12,636.5	14,043.2
Others ^{3/}	10,920.0	8,711.6	6,581.9	88,72.8 R	11,745.6
ALL SPECIES	93,949.0	93,340.9	91,142.0	100,706.8 R	110,329.3
Milkfish	35,606.8	35,143.5	35,042.3	37,623.6	40,767.8
Tilapia	19,395.4	19,390.2	18,329.4	20,466.3	21,541.7
Tiger prawn	19,299.1	20,788.9	20,926.0	21,459.7	21,745.8
Mud crab	5,135.3	5,380.7	6,255.4	7,265.9	9,026.6
Carp	468.2	538.1	413.6	358.7	317.0
Catfish	344.2	364.7	387.9	446.9	479.2
Oyster	179.5	180.9	203.4	259.8	310.7
Mussel	222.7	215.4	273.8	311.6 R	515.2
Seaweed	10,517.7	8,315.3	6,104.7	8,301.4	10,919.7
Other species	2,780.1	3,023.2	3,205.5	4,212.9	4,705.6

^{1/} Includes brackishwater pen/cage

^{2/} Includes small farm reservoir and rice fish

^{3/} Others include seaweed, mussel and oyster

Source: PSA



**PRODUCTION
COSTS AND
RETURNS**

PRODUCTION COSTS AND RETURNS

Table 5.1 ALL PALAY: PRODUCTION COSTS AND RETURNS BY SEASON, PHILIPPINES, 2018

ITEM	DRY	WET	AVERAGE
	(pesos per hectare)		
Gross Returns	81,918	80,556	81,024
Cash Costs	21,322	21,774	21,572
Non-Cash Costs	13,452	14,877	14,189
Imputed Costs	11,220	12,565	11,913
Total Costs	45,994	49,216	47,675
Net Returns	35,924	31,340	33,349
.....			
Net Profit-Cost Ratio	0.78	0.64	0.70
Cost Per Kilogram (<i>pesos</i>)	11.23	12.71	12.00

Source: PSA

Table 5.1a IRRIGATED PALAY: PRODUCTION COSTS AND RETURNS BY SEASON, PHILIPPINES, 2018

ITEM	DRY	WET	AVERAGE
	(pesos per hectare)		
Gross Returns	90,816	87,521	89,070
Cash Costs	25,210	25,249	25,178
Non-Cash Costs	16,233	17,506	17,169
Imputed Costs	12,162	13,530	12,858
Total Costs	53,605	56,285	55,205
Net Returns	37,211	31,236	33,865
.....			
Net Profit-Cost Ratio	0.69	0.55	0.61
Cost Per Kilogram (<i>pesos</i>)	11.81	13.37	12.64

Source: PSA

Table 5.1b NON-IRRIGATED PALAY: PRODUCTION COSTS AND RETURNS BY SEASON, PHILIPPINES, 2018

ITEM	DRY	WET	AVERAGE
	(pesos per hectare)		
Gross Returns	57,266	67,923	63,562
Cash Costs	15,174	17,869	16,664
Non-Cash Costs	7,978	11,423	9,883
Imputed Costs	10,940	12,160	11,618
Total Costs	34,092	41,452	38,164
Net Returns	23,174	26,471	25,398
.....			
Net Profit-Cost Ratio	0.68	0.64	0.67
Cost Per Kilogram (<i>pesos</i>)	11.91	12.69	12.25

Source: PSA

Table 5.2 CORN: PRODUCTION COSTS AND RETURNS BY TYPE, PHILIPPINES, 2018

ITEM	WHITE	YELLOW	ALL
	(pesos per hectare)		
Gross Returns	26,978	58,046	43,773
Cash Costs	6,829	30,956	15,735
Non-Cash Costs	1,860	3,150	2,427
Imputed Costs	7,525	9,660	6,400
Total Costs	16,214	43,766	24,562
Net Returns	10,764	14,280	19,211
.....			
Net Profit-Cost Ratio	0.66	0.33	0.78
Cost Per Kilogram (<i>pesos</i>)	8.72	10.56	7.94

Source: PSA

PRODUCTION COSTS AND RETURNS

Table 5.3 OTHER MAJOR CROPS: PRODUCTION COSTS AND RETURNS, PHILIPPINES, 2018

ITEM	MANGO ^{1/}	PINEAPPLE	COFFEE ^{1/}
	(pesos per hectare)		
Gross Returns	159,631	409,764	48,556
Cash Costs	45,622	69,325	27,228
Non-Cash Costs	6,905	1,079	1,167
Imputed Costs	33,375	16,240	10,258
Total Costs	85,901	86,645	38,653
Net Returns	73,730	323,119	9,903
.....			
Net Profit-Cost Ratio	0.86	3.73	0.26
Cost Per Kilogram (pesos)	22.43	2.10	72.64

^{1/} Cost of production refers to maintenance cost

Source: PSA

Table 5.3a OTHER MAJOR CROPS: PRODUCTION COSTS AND RETURNS, PHILIPPINES, 2018

ITEM	ONION		GARLIC
	Red	Multiplier	
(pesos per hectare)			
Gross Returns	459,421	370,939	285,748
Cash Costs	119,500	62,387	53,271
Non-Cash Costs	9,125	34,375	24,428
Imputed Costs	24,748	24,537	44,874
Total Costs	153,372	121,299	122,574
Net Returns	306,049	249,640	163,174
.....			
Net Profit-Cost Ratio	2.00	2.06	1.33
Cost Per Kilogram (pesos)	15.92	12.52	43.04

Source: PSA



**PRICE
STATISTICS**

PRICE STATISTICS

Table 6.1 CONSUMER PRICE INDEX ^{1/}, PHILIPPINES, 2014-2018

ITEM	2014	2015	2016	2017	2018
ALL ITEMS	106.3	107.0	108.4	111.5	117.3
Food and Non-Alcoholic Beverages	108.5	110.5	112.3	115.7	123.6
Alcoholic Beverages and Tobacco	135.9	140.0	146.5	156.6	187.9
Clothing and Footwear	106.8	109.5	111.8	114.5	117.2
Housing, Water, Electricity, Gas and Other Fuels	104.4	103.1	103.6	106.4	110.6
Furnishings, Household Equipment and Routine Maintenance of the House	106.3	108.2	110.2	112.7	116.2
Health	105.1	107.2	109.5	112.4	116.1
Transport	100.5	95.1	93.8	98.5	105.0
Communication	100.2	100.2	100.5	100.8	101.1
Recreation and Culture	107.3	108.1	109.1	110.4	112.6
Education	108.7	112.8	116.2	119.1	118.1
Restaurants and Miscellaneous Goods and Services	104.2	105.7	107.5	109.3	113.2

1/ 2012 as base year

Source: PSA

Table 6.2 PRODUCER PRICE INDEX FOR AGRICULTURE ^{2/}, PHILIPPINES, 2014-2018

ITEM	2014	2015	2016	2017	2018
ALL ITEMS	156.1	147.1	149.8	157.5	---
Cereals	179.6	157.9	157.6	163.6	---
Vegetables & Legumes	123.9	131.1	148.9	141.8	---
Rootcrops	131.0	127.1	147.5	155.2	---
Fruits	155.2	160.6	195.2	200.6	---
Commercial Crops	173.5	154.0	177.8	172.1	---
Livestock	147.1	141.7	138.8	155.1	---
Poultry	134.1	134.0	133.8	135.7	---
Fishery	132.3	129.5	124.7	135.8	---

2/ 2006 as base year

Source: PSA

**Table 6.3 CEREALS: AVERAGE DOMESTIC AND WORLD PRICES
BY TYPE, PHILIPPINES, 2014-2018**

ITEM	2014	2015	2016	2017	2018
DOMESTIC PRICE (pesos per kilogram)					
PALAY/RICE , Well milled					
<i>Farm</i>	20.07	17.33	17.43	18.21	20.40
<i>Retail</i>	42.32	42.04	41.72	42.14 R	44.99
CORNGRAIN					
Corngrain, white					
<i>Farm</i>	13.90	13.07	12.30	12.81	14.51
<i>Retail</i>	21.88	23.23	22.77	23.24 R	23.16
Corngrain, yellow					
<i>Farm</i>	12.73	12.01	11.78	11.60	14.01
<i>Retail</i>	20.76	20.70	20.36	19.14 R	21.26
WORLD PRICE (US dollar per kilogram)					
CEREALS					
Rice					
<i>5% broken</i>	0.42	0.39	0.40	0.39	0.42
<i>25% broken</i>	0.38	0.37	0.39	0.38	0.41
Corn					
<i>Yellow</i>	0.19	0.17	0.16	0.15	0.16

Sources: PSA and World Bank

PRICE STATISTICS

Table 6.4 SELECTED CROPS: AVERAGE ANNUAL PRICES,
PHILIPPINES, 2014-2018

ITEM	2014	2015	2016	2017	2018
	(pesos per kilogram)				
COCONUT					
Copra (corriente)					
<i>Farm</i>	24.67	21.28	30.01	35.92	21.58
Matured nuts					
<i>Farm</i>	7.14	6.46	7.84	8.62	6.24
<i>Retail</i>	20.53	20.87	22.20	24.15	24.29
Young nuts					
<i>Farm</i>	7.93	8.40	7.12	8.39	8.62
COFFEE, dry beans					
Robusta					
<i>Farm</i>	76.10	75.25	77.16	86.75	82.54
Arabica					
<i>Farm</i>	82.09	96.21	93.37	113.37	118.04
Excelsa					
<i>Farm</i>	68.35	73.99	76.29	88.75	87.83
RUBBER (cup lump)					
<i>Farm</i>	26.37	20.31	22.33	29.18	23.73
BANANA					
Bungulan					
<i>Farm</i>	9.93	10.22	12.35	12.66	12.72
Latundan					
<i>Farm</i>	11.42	11.72	12.53	12.21	11.71
<i>Retail</i>	33.02	33.75	34.58	35.06	35.99

Table 6.4 SELECTED CROPS: AVERAGE ANNUAL ..(Concluded)

ITEM	2014	2015	2016	2017	2018
	(pesos per kilogram)				
Lakatan					
<i>Farm</i>	18.32	18.68	20.10	19.37	20.94
<i>Retail</i>	49.02	49.79	51.36	51.07	52.41
Saba					
<i>Farm</i>	8.34	8.47	9.99	9.92	9.68
<i>Retail</i>	24.24	25.95	27.70	28.47	28.15
PINEAPPLE, Hawaiian					
<i>Farm</i>	7.86	8.11	8.97	9.52	9.93
<i>Retail</i>	40.46	42.06	43.76	45.47	51.13
MANGO, Carabao					
<i>Farm</i>	30.42	30.88	38.92	48.43	47.95
<i>Retail</i>	72.30	80.94	95.85	113.25	118.37
CASSAVA					
<i>Farm</i>	6.52	5.45	6.29	7.78	7.30
SWEET POTATO					
<i>Farm</i>	13.72	14.50	14.99	15.88	17.05
<i>Retail</i>	29.48	32.26	35.41	35.96	39.83

Source: PSA

PRICE STATISTICS

Table 6.5 SELECTED LIVESTOCK AND POULTRY: AVERAGE ANNUAL PRICES, PHILIPPINES, 2014-2018

ITEM	2014	2015	2016	2017	2018
	(pesos per kilogram)				
LIVESTOCK ^{3/}					
CARABAO					
<i>Farm (liveweight)</i>	74.99	78.02	78.04	86.84	95.13
CATTLE					
<i>Farm (liveweight)</i>	90.40	92.16	95.55	99.66	107.56
<i>Retail (beef lean meat)</i>	240.05	243.69	250.08	264.95	288.73
HOG					
<i>Farm (liveweight)</i>	100.48	97.53	94.64	106.73	115.58
<i>Retail (pork lean meat)</i>	191.59	190.85	188.59	203.19	217.63
GOAT					
<i>Farm</i>	113.51	115.29	117.74	125.13	138.00
POULTRY					
CHICKEN (broiler) ^{3/}					
<i>Farm</i>	91.06	93.69	96.61	92.18	100.10
<i>Retail</i>	138.24	137.50	140.11	143.98	152.31
DUCK ^{3/}					
<i>Farm</i>	93.58	98.96	101.59	113.01	126.80

^{3/} Backyard

Source: PSA

Table 6.6 SELECTED FISH SPECIES: AVERAGE ANNUAL PRICES,
PHILIPPINES, 2014-2018

ITEM	2014	2015	2016	2017	2018
	(pesos per kilogram)				
FISHERY PRODUCTS					
BANGUS (Milkfish)					
<i>Retail</i>	123.51	126.75	126.47	133.12	156.18
DILIS (Anchovies)					
<i>Retail</i>	86.26	86.96	90.10	99.91	111.47
GALUNGGONG (Roundscad)					
<i>Retail</i>	113.84	118.27	116.59	127.50	144.22
SAPSAP (Slipmouth)					
<i>Retail</i>	132.03	128.81	164.40	183.59	208.87
TILAPIA					
<i>Retail</i>	102.69	106.36	106.89	110.59	115.92
TULINGAN (Frigate Tuna)					
<i>Retail</i>	113.47	116.70	112.06	121.39	139.57

Source: PSA

PRICE STATISTICS

Table 6.7 FERTILIZERS: AVERAGE DEALERS' PRICES BY GRADE, PHILIPPINES, 2014-2018

ITEM	2014	2015	2016	2017	2018
	(pesos per 50 kg bag)				
UREA	1,094.15	1,048.43	951.43	912.96	1,031.05
AMMOSUL	630.68	598.87	572.52	633.47	600.29
COMPLETE	1,197.01	1,184.61	1,143.81	1,096.43	1,111.51
AMMOPHOS	1,029.69	997.98	955.54	907.34	936.18

Source: PSA

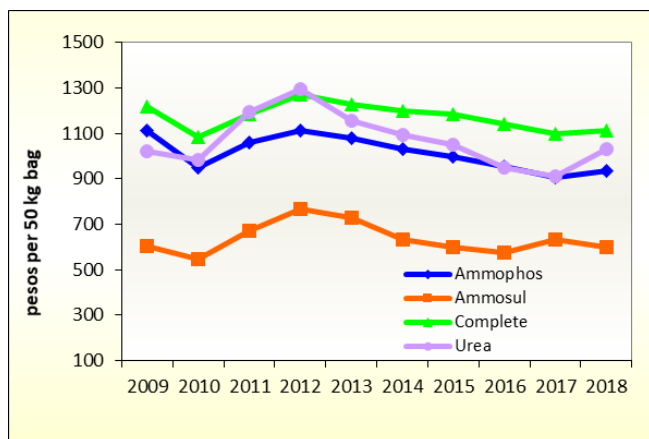
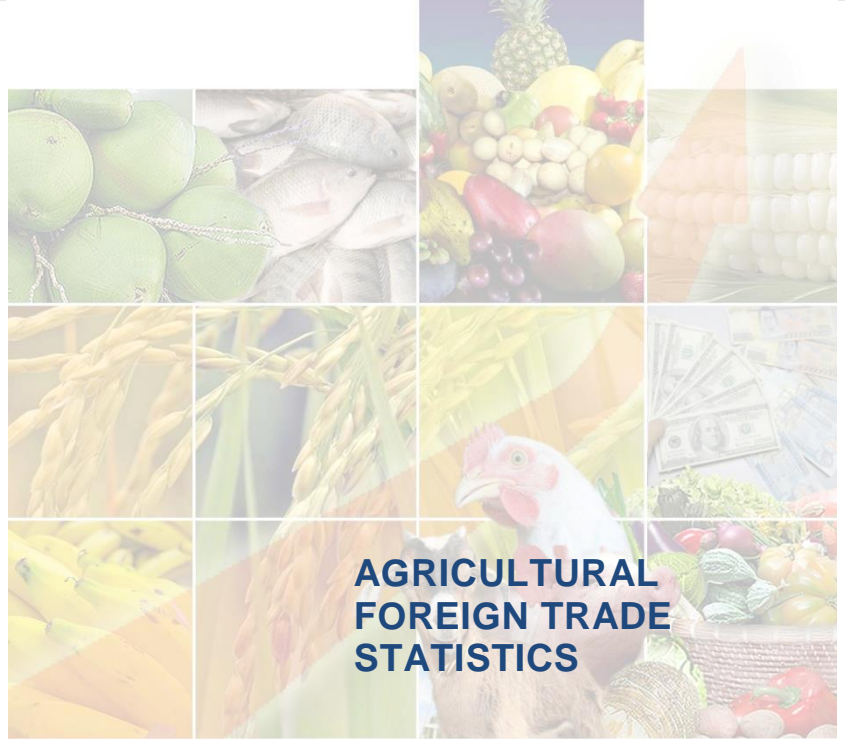


Figure 5. Fertilizers: Average Dealers' Prices by Grade, Philippines, 2009-2018



**AGRICULTURAL
FOREIGN TRADE
STATISTICS**

Table 7.1 TOP AGRICULTURAL EXPORTS: VOLUME AND VALUE, PHILIPPINES, 2014-2018

ITEM	2014	2015	2016	2017	2018
VOLUME OF TOP EXPORTS ('000 mt)					
Bananas, Fresh	3,630.98	1,795.22	1,733.84	2,855.64	3,126.20
Coconut Oil	892.30	940.15	755.61	983.59	919.91
Tuna	127.31	104.16	102.06	307.39	172.22
Pineapple & Products	783.33	713.94	1,126.96	880.29	739.20
Desiccated Coconut	84.30	52.02	93.41	116.08	145.01
Tobacco Manufactured	44.17	28.95	25.86	26.52	69.52
Tobacco					
Unmanufactured	38.02	32.85	23.91	57.45	37.09
Rubber	85.93	82.95	67.61	133.31	118.44
Copra Oil Cake	536.19	381.87	276.00	359.68	369.81
Food Preparations for Infant Use	9.96	8.10	1.77	18.22	12.53
VALUE OF TOTAL AGRICULTURAL EXPORTS (FOB in million US\$) 6,542.95 5,131.85 5,280.24 6,579.50 6,117.84					
VALUE OF TOP EXPORTS (FOB in million US\$)					
Bananas, Fresh	1,129.89	657.87	730.36	1,128.58	1,382.11
Coconut Oil	1,220.21	1,168.22	1,151.69	1,614.77	1,075.45
Tuna	501.03	350.30	277.52	521.55	495.36
Pineapple & Products	434.99	574.24	710.66	582.77	443.58
Desiccated Coconut	254.16	160.05	210.04	340.83	338.32
Tobacco Manufactured	325.06	207.61	161.18	188.96	298.83
Tobacco					
Unmanufactured	121.82	101.04	91.68	108.76	142.95
Rubber	79.63	61.89	37.68	103.07	81.83
Copra Oil Cake	112.04	70.42	52.06	63.65	66.30
Food Preparations for Infant Use	40.04	29.07	5.55	56.59	51.10

Source: PSA

Table 7.2 TOP AGRICULTURAL EXPORTS: VOLUME AND VALUE BY MAJOR COUNTRY OF DESTINATION, PHILIPPINES, 2018

COMMODITY/ COUNTRY OF DESTINATION	VOLUME	VALUE	% SHARE (VALUE)
VOLUME AND VALUE ('000 mt, FOB in million US\$)			
BANANAS, Fresh	3,126.20	1,382.11	100.00
China, People's Republic of	1,165.88	496.23	35.90
Japan	944.76	485.22	35.11
Korea, Republic of South	387.99	192.24	13.91
United Arab Emirates	195.63	61.34	4.44
Iran	162.60	47.77	3.46
Others	269.35	99.31	7.19
COCONUT OIL	919.91	1,075.45	100.00
United States of America	392.37	480.13	44.64
Netherlands	331.84	351.38	32.67
Spain	47.53	47.76	4.44
China, People's Republic of	32.10	39.87	3.71
Japan	29.53	35.67	3.32
Others	86.54	120.64	11.22
TUNA	172.22	495.36	100.00
Japan	14.81	79.32	16.01
United Kingdom	18.82	78.47	15.84
Germany	68.89	68.85	13.90
Spain	15.74	57.10	11.53
United States of America	11.41	54.15	10.93
Others	42.55	157.48	31.79
PINEAPPLE AND PRODUCTS	739.20	443.58	100.00
United States of America	197.89	142.95	32.23
Japan	167.21	73.79	16.64
China, People's Republic of	92.05	45.40	10.24
Korea, Republic of South	90.80	44.96	10.14
Netherlands	11.83	15.75	3.55
Others	179.42	120.73	27.22

Table 7.2 TOP AGRICULTURAL EXPORTS: VOLUME ..(Continued)

COMMODITY/ COUNTRY OF DESTINATION	VOLUME	VALUE	% SHARE (VALUE)
DESICCATED COCONUT	145.01	338.32	100.00
United States of America	41.42	100.78	29.79
Netherlands	21.39	49.73	14.70
Australia	8.17	21.23	6.28
Canada	7.54	17.27	5.10
United Kingdom	7.56	17.13	5.06
Others	58.95	132.18	39.07
TOBACCO MANUFACTURED	69.52	298.83	100.00
Thailand	10.73	83.25	27.86
Korea, Republic of South	7.02	69.54	23.27
Malaysia	35.56	56.78	19.00
Singapore	4.20	34.24	11.46
Vietnam	7.68	27.07	9.06
Others	4.33	27.94	9.35
TOBACCO UNMANUFACTURED	37.09	142.95	100.00
Indonesia	7.57	31.01	21.69
Belgium	4.39	20.91	14.62
Myanmar	2.63	17.83	12.47
Taiwan	4.90	15.68	10.97
Korea, Republic of South	3.03	11.92	8.34
Others	14.58	45.61	31.90
RUBBER	118.44	81.83	100.00
Malaysia	96.19	54.94	67.14
China, People's Republic of	12.54	14.75	18.03
Vietnam	4.28	4.79	5.86
Korea, Republic of South	2.62	3.88	4.74
India	1.67	2.24	2.74
Others	1.14	1.22	1.49

Table 7.2 TOP AGRICULTURAL EXPORTS: VOLUME ..(Concluded)

COMMODITY/ COUNTRY OF DESTINATION	VOLUME	VALUE	% SHARE (VALUE)
COPRA OIL CAKE	369.81	66.30	100.00
India	92.00	16.91	25.51
Korea, Republic of South	114.63	16.62	25.07
Vietnam	80.65	14.71	22.18
China, People's Republic of	54.47	8.88	13.39
Netherlands	6.00	4.40	6.64
Others	22.05	4.78	7.21
FOOD PREPARATION			
FOR INFANT USE	12.53	51.10	100.00
Malaysia	3.86	15.37	30.08
Thailand	2.87	11.19	21.90
Sri Lanka	1.63	6.46	12.63
Vietnam	0.86	3.65	7.14
Cambodia	0.80	3.46	6.78
Others	2.51	10.97	21.46

Source: PSA

Table 7.3 EXPORTS OF SELECTED COMMODITIES: VOLUME AND VALUE, PHILIPPINES, 2014-2018

ITEM	2014	2015	2016	2017	2018
VOLUME OF EXPORTS ('000 mt)					
Abaca	0.11	0.39	0.09	0.15	0.15
Nata de Coco	3.95	1.54	3.96	5.12	1.84
Asparagus	0.37	0.22	a/	-	-
Papaws (fresh/dried)	5.11	1.83	1.59	2.25	3.58
Shallots	2.55	0.92	0.60	0.78	0.25
Onions (fresh/dried/powdered)	0.16	0.01	0.02	a/	a/
Kaong	1.45	0.47	0.19	0.61	0.01
Manioc (Cassava) & Tapioca	1.89	1.52	0.79	1.42	1.25
Coconut (Young)	1.30	2.69	3.18	1.20	1.32
Yam (fresh/dried/powdered)	0.79	0.10	0.04	0.55	0.20
Garlic	0.17	0.13	0.18	0.35	0.20
VALUE OF EXPORTS (FOB in million US\$)					
Abaca	14.71	16.28	20.24	36.06	36.77
Nata de Coco	3.35	1.49	3.58	5.26	1.61
Asparagus	1.13	0.49	a/	-	-
Papaws (fresh/dried)	4.83	2.23	1.86	2.58	3.45
Shallots	1.41	0.61	0.53	0.73	0.33
Onions (fresh/dried/powdered)	0.13	0.07	0.02	a/	a/
Kaong	1.65	0.52	0.34	0.99	0.01
Manioc (Cassava) & Tapioca	2.56	1.43	0.87	1.54	1.30
Coconut (Young)	1.12	1.15	1.46	0.53	0.70
Yam (fresh/dried/powdered)	0.80	0.15	0.11	0.53	0.28
Garlic	1.21	0.91	1.37	2.97	1.56

a/ Less than 0.005

Source: PSA

Table 7.4 TOP AGRICULTURAL IMPORTS: VOLUME AND VALUE, PHILIPPINES, 2014-2018

ITEM	2014	2015	2016	2017	2018
VOLUME OF TOP IMPORTS ('000 mt)					
Wheat (Including Spelt) and Meslin	3,095.30	4,770.39	5,243.11	5,827.94	7,141.34
Soyabean Oil/Cake Meal	1,991.08	1,954.98	2,628.23	2,519.70	2,913.58
Milk & Cream & Products	277.59	350.72	431.43	412.64	565.52
Rice	1,089.14	1,481.50	609.36	888.09	2,006.35
Coffee	70.68	91.18	190.83	197.70	252.66
Meat of Bovine, Frozen	100.85	103.46	113.05	120.08	131.47
Fertilizer Manufactured	1,218.62	1,050.63	1,270.72	1,482.71	1,526.55
Maize	575.14	712.42	806.12	475.24	1,016.75
Urea	773.21	672.08	968.99	1,019.86	937.59
Tobacco Unmanufactured	35.29	50.86	40.70	184.17	65.36
VALUE OF TOTAL AGRICULTURAL IMPORTS					
(CIF in million US\$)	9,631.24	10,965.76	12,518.84	11,762.47	14,102.21
VALUE OF TOP IMPORTS (CIF in million US\$)					
Wheat (Including Spelt) and Meslin	1,030.44	1,319.24	1,229.81	1,362.74	1,811.07
Soyabean Oil/Cake Meal	971.14	888.40	1,053.93	983.69	1,252.43
Milk & Cream & Products	763.34	650.15	641.35	662.10	933.08
Rice	453.77	615.70	278.87	357.72	869.51
Coffee	246.45	298.13	483.04	513.87	652.03
Meat of Bovine, Frozen	336.34	324.89	347.66	394.01	444.65
Fertilizer Manufactured	352.73	319.47	317.09	376.36	413.17
Maize	205.05	197.72	212.21	129.15	298.60
Urea	254.28	206.75	232.89	261.65	283.34
Tobacco Unmanufactured	134.32	204.27	167.70	184.17	279.21

Source: PSA

Table 7.5 OTHER MAJOR AGRICULTURAL IMPORTS: VOLUME AND VALUE, PHILIPPINES, 2014-2018

ITEM	2014	2015	2016	2017	2018
VOLUME OF IMPORTS ('000 mt)					
LIVESTOCK & POULTRY					
Live Bovine (million head)	0.02	0.03	0.02	a/	-
Meat of Bovine, frozen	100.85	103.24	113.05	120.08	131.47
Chicken Meat, frozen	166.55	190.53	235.77	253.71	291.04
VEGETABLES					
Garlic	32.71	74.14	63.22	72.56	81.97
Onion	10.53	38.94	137.78	38.05	112.69
Cauliflower and Headed Broccoli	0.03	0.02	0.04	0.18	0.23
Potatoes	6.86	20.18	20.27	20.90	23.79
VALUE OF IMPORTS (CIF in million US\$)					
LIVESTOCK & POULTRY					
Live Bovine	22.12	32.97	19.19	4.16	-
Meat of Bovine, frozen	336.28	323.43	347.66	394.01	444.65
Chicken Meat, frozen	167.86	179.32	221.99	235.80	276.15
VEGETABLES					
Garlic	12.89	25.43	24.83	28.05	31.28
Onion	5.05	12.13	27.49	12.43	29.31
Cauliflower and Headed Broccoli	0.04	0.02	0.06	0.21	0.25
Potatoes	2.53	7.61	8.92	9.66	11.10

a/ Less than 0.005

Source: PSA

Table 7.6 TOP AGRICULTURAL IMPORTS: VOLUME AND VALUE, BY MAJOR COUNTRY OF ORIGIN, PHILIPPINES, 2018

COMMODITY/ COUNTRY OF ORIGIN	VOLUME	VALUE	% SHARE (VALUE)
VOLUME AND VALUE ('000 mt, CIF in million US\$)			
WHEAT (INCLUDING SPELT)			
AND MESLIN	7,141.34	1,811.07	100.00
United States of America	2,574.97	705.44	38.95
Ukraine	1,730.26	399.83	22.08
Australia	1,515.93	371.67	20.52
Russia	760.98	173.29	9.57
Canada	321.98	95.41	5.27
Others	237.23	65.43	3.61
SOYABEAN OIL/CAKE MEAL	2,913.58	1,252.43	100.00
United States of America	2,225.92	968.51	77.33
Argentina	637.68	261.00	20.84
Brazil	44.45	19.97	1.59
Australia	3.25	1.55	0.12
China, People's Republic of	0.39	0.33	0.03
Others	1.89	1.07	0.09
MILK & CREAM & PRODUCTS	565.52	933.08	100.00
New Zealand	112.11	326.44	34.98
United States of America	123.97	193.68	20.76
Malaysia	79.69	67.51	7.24
Thailand	41.81	45.81	4.91
Netherlands	26.12	45.69	4.90
Others	181.81	253.97	27.22
RICE	2,006.35	869.51	100.00
Thailand	960.51	401.29	46.15
Vietnam	819.61	354.62	40.78
India	91.40	53.37	6.14
China, People's Republic of	62.33	32.54	3.74
Pakistan	63.72	24.06	2.77
Others	62.40	3.62	0.42

Table 7.6 TOP AGRICULTURAL IMPORTS: VOLUME ..(Continued)

COMMODITY/ COUNTRY OF ORIGIN	VOLUME	VALUE	% SHARE (VALUE)
COFFEE	252.66	652.03	100.00
Indonesia	164.85	431.22	66.13
Vietnam	78.59	174.66	26.79
Malaysia	3.17	21.16	3.25
Thailand	2.82	12.23	1.88
China, People's Republic of	0.72	3.83	0.59
Others	2.51	8.94	1.37
MEAT OF BOVINE, FROZEN	131.47	444.65	100.00
Australia	36.41	137.66	30.96
India	44.97	131.53	29.58
Brazil	21.21	68.39	15.38
United States of America	10.64	49.20	11.07
Ireland	7.11	22.10	4.97
Others	11.13	35.76	8.04
FERTILIZER MANUFACTURED	1,526.55	413.17	100.00
China, People's Republic of	824.19	198.89	48.14
Canada	123.94	33.88	8.20
Vietnam	82.26	28.36	6.86
Republic of Korea	62.67	22.00	5.32
Japan	137.33	20.06	4.86
Others	296.15	109.99	26.62
MAIZE	1,016.75	298.60	100.00
Indonesia	283.95	86.30	28.90
Thailand	230.92	67.73	22.68
United States of America	200.86	46.84	15.69
Vietnam	91.59	32.76	10.97
India	88.65	25.09	8.40
Others	120.77	39.87	13.35

Table 7.6 TOP AGRICULTURAL IMPORTS: VOLUME ..(Concluded)

COMMODITY/ COUNTRY OF ORIGIN	VOLUME	VALUE	% SHARE (VALUE)
UREA	937.59	283.34	100.00
Indonesia	343.91	106.74	37.67
Qatar	229.72	71.34	25.18
Malaysia	244.54	69.06	24.37
Saudi Arabia	51.28	15.69	5.54
China, People's Republic of	47.94	13.80	4.87
Others	20.20	6.71	2.37
TOBACCO UNMANUFACTURED	65.36	279.21	100.00
Belgium	10.13	55.85	20.00
India	14.97	50.52	18.10
Brazil	5.22	27.89	9.99
China, People's Republic of	8.30	23.77	8.51
Thailand	4.52	23.33	8.36
Others	22.22	97.83	35.04

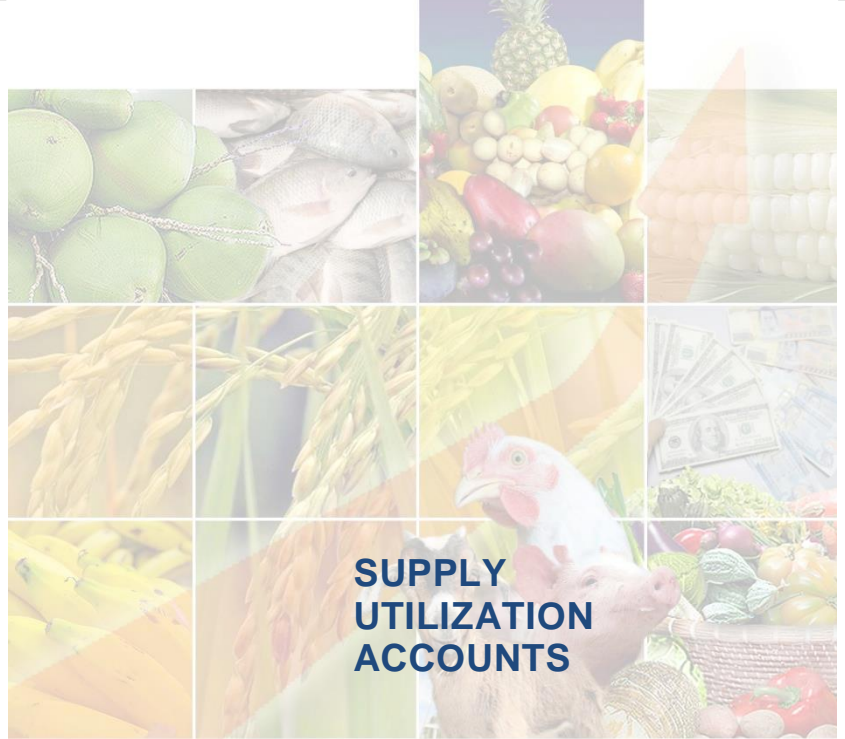
Source: PSA

AGRICULTURAL FOREIGN TRADE STATISTICS

**Table 7.7 AGRICULTURAL TRADE BALANCES OF THE PHILIPPINES
WITH ITS MAJOR TRADING PARTNERS, 2014-2018**

ITEM	2014	2015	2016	2017	2018
(Export in FOB M US\$; Import in CIF M US\$)					
PHILIPPINES					
<i>Agricultural Exports</i>	6,542.95	5,131.85	5,280.24	6,579.50	6,117.84
<i>Agricultural Imports</i>	9,631.24	10,965.76	12,518.84	11,762.47	14,102.21
<i>Trade Balance</i>	-3,088.29	-5,833.90	-7,238.60	-5,182.97	-7,984.37
AUSTRALIA					
<i>Agricultural Exports</i>	72.00	72.40	68.51	65.18	84.45
<i>Agricultural Imports</i>	502.30	521.91	554.88	749.79	776.20
<i>Trade Balance</i>	-430.30	-449.52	-486.37	-684.60	-691.75
JAPAN					
<i>Agricultural Exports</i>	944.19	655.33	647.57	804.30	814.83
<i>Agricultural Imports</i>	108.72	125.60	230.50	48.20	64.30
<i>Trade Balance</i>	835.46	529.73	417.07	756.10	750.53
USA					
<i>Agricultural Exports</i>	1,505.42	1,329.51	1,333.97	1,472.34	1,249.02
<i>Agricultural Imports</i>	1,992.34	2,337.95	2,542.08	2,636.13	776.20
<i>Trade Balance</i>	-486.92	-1,008.44	-1,208.11	-1,163.79	472.83
ASEAN					
<i>Agricultural Exports</i>	788.19	517.50	525.25	538.94	646.04
<i>Agricultural Imports</i>	2,754.74	3,344.78	3,837.21	3,778.61	4,717.15
<i>Trade Balance</i>	-1,966.54	-2,827.28	-3,311.96	-3,239.66	-4,071.12
EUROPEAN UNION					
<i>Agricultural Exports</i>	999.36	994.98	1,021.22	1,566.51	1,173.27
<i>Agricultural Imports</i>	1,066.83	1,110.02	1,318.05	1,300.75	1,473.41
<i>Trade Balance</i>	-67.47	-115.04	-296.83	265.76	-300.14
Rest of the World					
<i>Agricultural Exports</i>	2,233.78	1,562.15	1,683.72	2,132.23	2,150.24
<i>Agricultural Imports</i>	3,206.31	3,525.50	4,036.11	3,248.99	4,014.59
<i>Trade Balance</i>	-972.54	-1,963.35	-2,352.39	-1,116.77	-1,864.35

Source: PSA



**SUPPLY
UTILIZATION
ACCOUNTS**

SUPPLY UTILIZATION ACCOUNTS

**Table 8.1 RICE: SUPPLY UTILIZATION ACCOUNTS,
PHILIPPINES, 2014-2018**

ITEM	2014	2015	2016	2017	2018P
			('000 mt)		
Gross Supply	15,618	16,010	15,332	16,256	16,761
Beginning Stock	2,126	2,662	3,199	2,765	2,290
Production	12,405	11,870	11,528	12,607	12,469
Imports	1,087	1,478	605	885	2,002
Utilization					
Exports	1	a/	a/	a/	a/
Seeds	232	228	223	236	235
Feeds & Waste	806	772	749	819	810
Processing	496	475	461	504	499
Net Food Disposable	11,420	11,336	11,133	12,407	12,665
Per Capita NFD					
<i>kilograms/year</i>	114.34	111.62	107.83	118.25	118.81
<i>grams/day</i>	313.25	305.81	295.43	323.97	325.52
Ending Stock	2,662	3,199	2,765	2,290	2,551

a/ Less than 1 thousand metric ton

Source: PSA

**Table 8.2 CORN: SUPPLY UTILIZATION ACCOUNTS,
PHILIPPINES, 2014-2018**

ITEM	2014	2015	2016	2017	2018P
			('000 mt)		
Gross Supply	8,515	8,415	8,412	8,772	9,740
Beginning Stock	169	184	387	382	952
Production	7,771	7,519	7,219	7,915	7,772
Imports	575	712	806	475	1,017
Utilization					
Exports	1	a/	a/	a/	a/
Seeds	52	51	50	51	50
Feeds & Waste	5,051	4,887	4,692	5,145	5,052
Processing	1,037	1,003	963	1,056	1,037
Net Food Disposable	2,190	2,086	2,325	1,569	2,925
Per Capita NFD					
<i>kilograms/year</i>	21.93	20.54	22.52	14.95	27.44
<i>grams/day</i>	60.07	56.28	61.69	40.97	75.19
Ending Stock	184	387	382	952	676

a/ Less than 1 thousand metric ton

Source: PSA

**Table 8.3 PAPAYA: SUPPLY UTILIZATION ACCOUNTS,
PHILIPPINES, 2014-2018**

ITEM	2014	2015	2016	2017	2018P
	(mt)				
Gross Supply	172,628	172,650	162,481	167,043	169,143
Production	172,628	172,650	162,481	167,043	169,143
Imports	-	-	-	-	-
Utilization					
Exports	5,108	1,834	1,588	2,255	3,580
Feeds & Waste	10,051	10,249	9,654	9,887	9,934
Net Food Disposable	157,469	160,567	151,239	154,901	155,629
Per Capita NFD					
<i>kilograms/year</i>	1.58	1.58	1.46	1.48	1.46
<i>grams/day</i>	4.32	4.33	4.01	4.04	4.00

Source: PSA

**Table 8.4 CABBAGE: SUPPLY UTILIZATION ACCOUNTS,
PHILIPPINES, 2014-2018**

ITEM	2014	2015	2016	2017	2018P
	(mt)				
Gross Supply	127,986	125,752	123,081	122,474	120,656
Production	127,986	125,752	123,080	122,474	120,656
Imports	-	-	1	-	-
Utilization					
Exports	-	-	-	b/	b/
Seeds	31	30	30	29	29
Feeds & Waste	10,239	10,060	9,846	9,798	9,652
Net Food Disposable	117,716	115,662	113,205	112,647	110,974
Per Capita NFD					
<i>kilograms/year</i>	1.18	1.14	1.10	1.07	1.04
<i>grams/day</i>	3.23	3.12	3.00	2.94	2.85

b/ Less than 1 metric ton

Source: PSA

SUPPLY UTILIZATION ACCOUNTS

Table 8.5 CASSAVA: SUPPLY UTILIZATION ACCOUNTS, PHILIPPINES, 2014-2018

ITEM	2014	2015	2016	2017R	2018P
			(mt)		
Gross Supply	2,550,693	2,714,346	2,755,155	2,806,668	2,723,033
Production	2,540,254	2,714,346	2,755,146	2,806,668	2,723,033
Imports	10,439	-	9	-	-
Utilization					
Exports	1,744	656	641	681	906
Feeds & Waste	152,415	162,861	165,309	168,400	163,382
Processing	2,141,117	2,279,499	2,313,792	2,357,029	2,286,586
Net Food					
Disposable	255,417	271,330	275,414	280,558	272,158
Per Capita NFD					
<i>kilograms/year</i>	2.56	2.67	2.67	2.67	2.55
<i>grams/day</i>	7.01	7.32	7.31	7.33	6.99

Source: PSA

Table 8.6 MONGO: SUPPLY UTILIZATION ACCOUNTS, PHILIPPINES, 2014-2018

ITEM	2014	2015	2016	2017R	2018P
			(mt)		
Gross Supply	60,867	64,371	65,271	71,816	74,895
Production	32,144	33,623	34,039	35,341	36,664
Imports	28,723	30,748	31,232	36,475	38,231
Utilization					
Exports	50	b/	3	22	2
Seeds	193	187	186	189	187
Feeds & Waste	304	322	326	359	374
Net Food Disposable	60,320	63,862	64,756	71,246	74,331
Per Capita NFD					
<i>kilograms/year</i>	0.60	0.63	0.63	0.68	0.70
<i>grams/day</i>	1.64	1.73	1.72	1.86	1.91

b/Less than 1 metric ton

Source: PSA

Table 8.7 CHICKEN (Dressed): SUPPLY UTILIZATION ACCOUNTS, PHILIPPINES, 2014-2018

ITEM	2014	2015	2016	2017R	2018P
			(mt)		
Gross Supply	1,376,862	1,469,355	1,525,139	1,598,047	1,705,275
Production	1,210,257	1,278,826	1,289,369	1,344,334	1,414,231
Imports	166,605	190,529	235,770	253,713	291,044
Utilization					
Exports	8,405	3,700	2,399	2,573	382
Net Food					
Disposable	1,368,457	1,465,655	1,522,740	1,595,474	1,704,893
Per Capita NFD					
<i>kilograms/year</i>	13.70	14.43	14.75	15.21	16.25
<i>grams/day</i>	37.53	39.53	40.41	41.66	44.52

Source: PSA

Table 8.8 BEEF: SUPPLY UTILIZATION ACCOUNTS, PHILIPPINES, 2014-2018

ITEM	2014	2015	2016	2017	2018P
			(mt)		
Gross Supply	218,852	220,875	235,602	242,722	253,077
Production	153,160	156,429	158,490	156,079	154,326
Imports	65,692	64,446	77,112	86,643	98,751
Utilization					
Exports	45	10	-	-	25
Processing	15,316	15,643	15,849	15,608	15,433
Carcass					
Net Food					
Disposable	179,038	181,168	195,785	198,942	205,336
Per Capita NFD					
<i>kilograms/year</i>	1.79	1.78	1.90	1.90	1.93
<i>grams/day</i>	4.90	4.88	5.20	5.19	5.28
Offals					
Net Food					
Disposable	24,453	24,054	23,968	28,172	32,283
Per Capita NFD					
<i>kilograms/year</i>	0.24	0.24	0.23	0.27	0.30
<i>grams/day</i>	0.66	0.66	0.64	0.74	0.83

Source: PSA

SUPPLY UTILIZATION ACCOUNTS

Table 8.9 MILKFISH: SUPPLY UTILIZATION ACCOUNTS, PHILIPPINES, 2014-2018

ITEM	2014	2015	2016	2017R	2018P
			(mt)		
Gross Supply	402,091	392,843	402,661	416,813	400,119
Production	401,979	392,738	402,655	416,363	400,119
Imports	112	105	6	450	-
Utilization					
Exports	3,419	3,219	3,306	3,040	3,879
Feeds & Waste	12,059	11,782	12,080	12,491	12,004
Processing	128,633	125,676	128,850	133,236	128,038
Net Food Disposable	257,979	252,166	258,426	268,046	256,198
Per Capita NFD					
<i>kilograms/year</i>	2.58	2.48	2.50	2.55	2.40
<i>grams/day</i>	7.08	6.80	6.86	7.00	6.58

Source: PSA

Table 8.10 TILAPIA: SUPPLY UTILIZATION ACCOUNTS, PHILIPPINES, 2014-2018

ITEM	2014	2015	2016	2017	2018P
			(mt)		
Gross Supply	313,378	311,727	300,759	311,210	321,167
Production	313,378	311,684	300,722	310,975	321,077
Imports	-	43	37	235	91
Utilization					
Exports	1,957	167	60	5	6
Feeds & Waste	9,401	9,351	9,022	9,329	9,632
Net Food Disposable	302,020	302,209	291,678	301,875	311,529
Per Capita NFD					
<i>kilograms/year</i>	3.02	2.98	2.83	2.88	2.92
<i>grams/day</i>	8.28	8.15	7.74	7.88	8.01

Source: PSA

SELECTED STATISTICS ON AGRICULTURE 2019
Technical Staff

CLAIRE DENNIS S. MAPA, Ph.D.
Undersecretary
National Statistician and Civil Registrar General

ROSALINDA P. BAUTISTA
Assistant Secretary
Deputy National Statistician
Sectoral Statistics Office

VIVIAN R. ILARINA
Assistant National Statistician
Macroeconomic Accounts Service

DIVINA GRACIA L. DEL PRADO
Assistant National Statistician
Economic Sector Statistics Service

Focal Persons

Maria Carol G. Duran
Ermina V. Tepora
Elizabeth B. Cabrera
Reinelda P. Adriano
Elena G. Varona
Ma. Julieta P. Soliven



For Inquiries:

PHILIPPINE STATISTICS AUTHORITY

PSA CVEA Building, East Avenue, Diliman, Quezon City, Philippines 1101

Tel. No. +63(2) 4626600 loc. 833 - Telefax No. +63(2) 4626600 loc. 839

E-mail address: info@psa.gov.ph • kmcd.staff@psa.gov.ph



Visit us at
www.psa.gov.ph



Like us on Facebook
[/PhilippineStatisticsAuthority](https://www.facebook.com/PhilippineStatisticsAuthority)



Like us on Twitter
[@PSAgovph](https://twitter.com/PSAgovph)