



2007 Selected Statistics on Agriculture



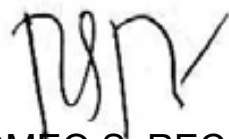
Department of Agriculture
BUREAU OF AGRICULTURAL STATISTICS
Philippines

FOREWORD

The 2007 Selected Statistics on Agriculture (SSA) is the 18th edition of this annual publication of the Bureau of Agricultural Statistics. As in the past issues, the SSA has been designed to serve as a handy reference material on Philippine agriculture. It presents the three-year series of selected statistical indicators on agriculture and fisheries. Most of the statistical tables in this edition covered the period 2004 to 2006. A few statistical tables were accompanied with graphs that included 10-year data series to reflect more clearly the changes over time.

The formats used in presenting the selected development indicators and statistics on production, trade and prices of crops, livestock, poultry and fisheries have been generally maintained to facilitate the temporal comparison of data. While this edition contains some changes in table titles, these have been done only to enhance the clarity of contents of the tables.

The BAS welcomes comments and suggestions from its valued clients on how to further improve the contents and format of this Handbook.



ROMEO S. RECIDÉ
Director

ACKNOWLEDGMENT

Our appreciation and gratitude go to the following agencies for their cooperation and support in sharing with us their data: *Agricultural Credit Policy Council (ACPC), Asian Development Bank (ADB), Bureau of Animal Industry (BAI), Bureau of Fisheries & Aquatic Resources (BFAR), Bangko Sentral Ng Pilipinas (BSP), Cotton Development Administration (CODA), Department of Budget and Management (DBM), Development Bank of the Philippines (DBP), Food and Agriculture Organization (FAO), Fertilizer and Pesticide Authority (FPA), Fiber Industry Development Authority (FIDA), National Food Authority (NFA), National Irrigation Administration (NIA), National Statistical Coordination Board (NSCB), National Statistics Office (NSO), Philippine Coconut Authority (PCA), Philippine National Bank (PNB), and Sugar Regulatory Administration (SRA).*

TABLE OF CONTENTS

Page/s

Foreword	i
Acknowledgement	ii
Table of Contents	iii
Explanatory Notes	iv
An Overview of the Philippine Agricultural Economy	1
Selected Macroeconomic and Agriculture Sector Statistics	5
Crops Sub-Sector Statistics	13
Livestock & Poultry Sub-Sector Statistics	23
Fisheries Sector Statistics	29
Production Costs and Returns	35
Price Statistics	41
Agricultural Foreign Trade Statistics	49
Supply and Utilization Accounts	59

EXPLANATORY NOTES

1. Unless otherwise indicated, year refers to calendar year.
2. As a rule, figures from source publications were copied to the extent possible. In some instances, however, figures were rounded-off or combined.
3. Figures may not add up to the totals due to rounding off.
4. The following symbols and abbreviations were used in the tables:

---	<i>Data not yet available</i>
-	<i>None</i>
<i>R</i>	<i>Revised</i>
<i>P</i>	<i>Preliminary</i>
<i>MT</i>	<i>Metric Ton</i>
<i>HAS</i>	<i>Hectare</i>
<i>KG</i>	<i>Kilogram</i>
<i>GNP</i>	<i>Gross National Product</i>
<i>GVA</i>	<i>Gross Value Added</i>
<i>GDP</i>	<i>Gross Domestic Product</i>
<i>PDB</i>	<i>Private Development Bank</i>
<i>SMB</i>	<i>Savings and Mortgage Bank</i>
<i>SSLA</i>	<i>Stock Savings & Loan Assn.</i>

AN OVERVIEW OF THE PHILIPPINE AGRICULTURAL ECONOMY

Economic Performance. The country posted a 6.21 percent increase in Gross National Product (GNP) in 2006. The growth in Gross Domestic Product (GDP) was 5.37 percent. The agriculture sector contributed 18.70 percent to the GDP and registered a 3.85 percent growth. All sub-sectors posted output gains except poultry. The crops sub-sector which comprised half of the agricultural output surpassed its year-ago performance by putting up a 3.94 percent expansion.

Population, Labor Force and Wages. In 2006, total projected population based on the 2000 CPH was 86.97 million persons. Males still outnumbered the females. In the same year, about 35.79 million persons were in the labor force and 92 percent of them were employed. Agriculture sector absorbed 35.8 percent of the employed persons in 2006. Agricultural wage rates in nominal terms continued to increase while in real terms, these went down during the reference years. In the first semester of 2006, nominal wages of palay and corn farmers were higher by 26 and 18 index points compared to the 2000 wages, respectively.

Farm Structure. The 2002 Census of Agriculture reported that there were 4.8 million agricultural farms with a total land area of 9.7 million hectares nationwide. About 79 percent of these agricultural farms covering about 8.0 million hectares were owned and partly owned. About 56 percent of the country's farms constituting a total area of 5.4 million hectares had two to three parcels.

Agricultural Support. Government expenditures in agriculture increased to P27.52 billion in 2006. However, its share in the national government budget went down

to 2.61 percent. On the other hand, agricultural loans amounted to P584.63 billion comprising 3.3 percent of the total loans. In particular, credit support for production purposes reached P168.66 billion. This represented an increase of 13.13 percent from the 2005 record. The expansion in irrigation services provided by the government remained minimal. Irrigation development in 2006 at 45.67 percent inched up by only one percent. About 1.43 million hectares of farmlands were irrigated nationwide.

Production Performance. Palay output improved by 4.96 percent. Corn production surged by 15.78 percent. Similar trend was noted for sugarcane production which appreciated by 6.23 percent. Coconut production grew by 0.90 percent. Increased outputs were observed for banana, pineapple, cassava, tomato, eggplant and rubber.

Hog and dairy production expanded by about 3.70 percent. Production declines of 2.33 to 3.44 percent were reported for carabao, cattle and goat. Production of chicken went down by 0.80 percent while that of duck dropped by 6.85 percent. In the case of egg production, it was up by 3.11 percent for chicken and down by 6.01 percent for duck.

Production in commercial fisheries declined by 4.70 percent but municipal fisheries and aquaculture had 9 to 10 percent output gains.

Prices. On the average, prices received by farmers for agricultural commodities in 2006 were 70.8 index points higher than the 1994 prices. The rice and corn farmers had an average price gain of 87.7 index points. Rootcrops had the biggest price increment of 140 index

points. In the same year, prices paid by consumers for goods and services were 37.9 index points above the 2000 prices. The increase was 30.6 index points for food, beverage and tobacco.

International Trade. The country's exports and imports of agricultural products continuously increased over the three reference years. Revenues from agricultural exports amounted to US\$ 2.78 billion in 2006, higher by 3.32 percent from the previous year's earnings. Meanwhile, there was an 8.54 percent growth in agricultural import expenditures which amounted to US\$ 4.32 billion.

Coconut oil, banana and pineapple and products remained the top three agricultural exports in 2006. Coconut oil was still leading despite its declining volume and value. Major markets were Netherlands and USA for coconut oil, Japan for fresh banana, and USA for pineapple and products. On the other hand, wheat and meslin surpassed the country's rice imports and became the top agricultural imports in 2006.

SELECTED
MACROECONOMIC AND
AGRICULTURE SECTOR
STATISTICS

Table 1. Macroeconomic Growth Indicators, Philippines, 2004-2006

ITEM	2004	2005	2006 P
GNP (Million Pesos) ^{1/}	1,250,188	1,320,681	1,402,727
Growth Rate (%)	6.72	5.64	6.21
GDP (Million Pesos) ^{1/}	1,152,174	1,209,473	1,274,415
Growth Rate (%)	6.18	4.97	5.37
GVA IN AGRICULTURE EXCLUDING FORESTRY (Million Pesos) ^{1/}			
Growth Rate (%)	225,287	229,852	238,704
Agriculture Sector	5.07	2.03	3.85
Crops	5.08	0.69	3.94
Livestock	-1.01	2.37	2.62
Poultry	4.25	0.16	-0.34
Fisheries	8.55	6.01	5.88
Agricultural Activities & Services	8.14	1.59	6.12

1/ At constant 1985 prices

Figure 1. Macroeconomic Growth Indicators, Philippines, 1997-2006

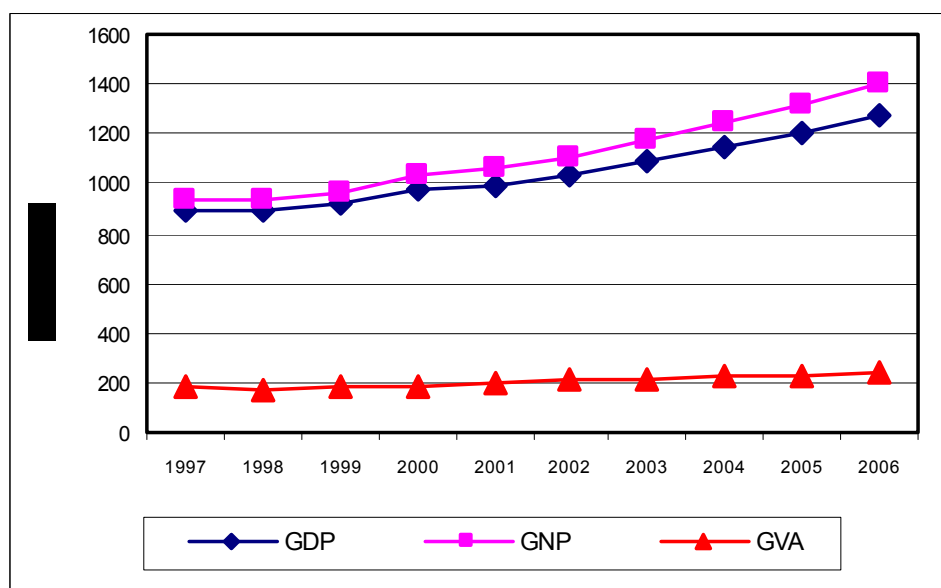


Table 2. Population, Labor Force and Employment and Wage Rate Indices, Philippines, 2004-2006

ITEM	2004	2005	2006
POPULATION ^{2/} (Million Persons)	83.56	85.26	86.97
Male	42.04	42.89	43.74
Female	41.52	42.37	43.23
LABOR FORCE (Million Persons)	35.86	34.99	35.79
Employment	31.61	32.31	32.96
<i>Agriculture</i>	11.38	11.63	11.81
Unemployment ^{3/}	4.25	2.68	2.83
WAGE RATE INDICES IN AGRICULTURE ^{4/} (Without Meal)			
Nominal	115.70	122.40	126.20 <i>a/</i> 118.40 <i>b/</i>
Real	95.90	94.30	92.40 <i>a/</i> 86.70 <i>b/</i>

Table 3. Peso Exchange Rate, Inflation Rate and Purchasing Power , Philippines, 2004-2006

ITEM	2004	2005	2006
OFFICIAL EXCHANGE RATE ^{5/}	56.04	55.09	51.31
INFLATION RATE ^{6/}	6.0	7.6	6.2
PURCHASING POWER OF PESO	0.83	0.77	0.73

2/ Mid-year projections based on 2000 CPH.

3/ 2005 data started adopting the new unemployment definition.

4/ Base year (2000) average agricultural wage rate per day = P129.60; 2006 indices covered only the first semester wage rates for palay (a) and corn (b).

5/ Sourced from BSP.

6/ Headline inflation (base year 2000); sourced from BSP.

Table 4. Expenditures in National Government and Agriculture, Philippines, 2004-2006

ITEM	2004	2005R	2006P
NATIONAL GOVERNMENT			
(Million Pesos) ^{7/}	867,010	947,554	1,053,277
AGRICULTURE			
(Million Pesos)	28,462	25,939	27,515
AGRICULTURE TO NATIONAL GOVERNMENT RATIO (%)	3.28	2.74	2.61

Table 5. Fertilizer (All Grades): Production and Import, Philippines, 2004-2006

ITEM	2004R	2005R	2006P
TOTAL SUPPLY ('000 MT)	2,884.9	2,492.2	2,691.1
Production	989.8	877.1	1,513.1
Production to Total Supply Ratio (%)	34.3	35.2	56.2
Import	1,895.1	1,615.1	1,178.0
Import to Total Supply Ratio (%)	65.7	64.8	43.8

Table 6. Irrigation: Service Area and Potential Irrigable Areas, Philippines, 2004-2006

ITEM	2004	2005	2006
SERVICE AREA			
(Million Has.) ^{8/}	1.40	1.41	1.43
SERVICE AREA TO TOTAL POTENTIAL IRRIGABLE AREA RATIO (%)	44.84	45.20	45.67

^{7/} Sourced from DBM.

^{8/} Irrigation service area refers to area that is presently provided with irrigation and drainage facilities and where irrigation and drainage services could be readily rendered.

Table 7. Number and Area of Farms by Tenurial Status and Number of Parcels, Philippines, 1991 and 2002 ^{9/}

ITEM	1991	2002
FARM TENURE		
Number of Farms (Thousand Farms)		
TOTAL	4610	4823
Owned	2000	2293
Partly owned	1523	1500
Tenanted	681	622
Leased	116	111
Other forms	290	284
Not reported	-	13
Area of Farms (Thousand Has.)		
TOTAL	9975	9671
Owned	4855	4897
Partly owned	3226	3105
Tenanted	1284	1115
Leased	253	203
Other forms	357	329
Not reported	-	22
FARM PARCELS		
Number of Farms (Thousand Farms)		
TOTAL	4610	4823
1 parcel	1811	1859
2 - 3 parcels	2462	2679
4 - 5 parcels	278	233
6 parcels and above	59	52

Table 7. Number and Area of Farms by Tenurial Status and Number of Parcels, Philippines, 1991 and 2002 ^{9/} *(concluded)*

ITEM	1991	2002
Area of Farms (Thousand Has.)		
TOTAL	9975	9671
1 parcel	3201	2825
2 - 3 parcels	5239	5442
4 - 5 parcels	1097	939
6 parcels and above	438	465

9/ Sourced from NSO.

**Table 8. Agricultural Production Loans: Amount
Granted by Commodity and Sources,
Philippines, 2004-2006**

ITEM	2004	2005R	2006P
LOANS GRANTED BY COMMODITY (Million Pesos) ^{10/}			
FOOD COMMODITIES	103,670.9	75,525.2	82,058.0
Cereals	14,159.6	15,662.8	17,824.0
Palay	12,530.0	13,824.7	15,482.3
Corn	1,476.5	1,610.2	2,069.3
Sorghum	46.2	73.7	81.0
Soybeans & Feedgrains	106.9	154.2	191.4
Fruits, Vegetables & Rootcrops	5,790.4	6,396.6	6,989.3
Livestock and Poultry	32,497.3	39,310.9	47,312.4
Fisheries	51,223.5	14,154.9	9,932.4
EXPORT AND COMMERCIAL CROPS	19,659.7	20,412.2	22,847.7
Abaca & Other Fibers	266.9	259.6	307.1
Coconut	4,142.5	4,505.2	5,051.5
Coffee and Cacao	982.4	1,548.9	2,024.8
Cotton	2.5	2.9	3.3
Rubber	61.3	79.9	104.1
Sugarcane	13,951.0	13,385.4	14,898.3
Tobacco	253.1	630.3	458.6
FORESTRY	1,130.8	1,251.0	1,249.6
OTHERS	23,007.5	26,693.4	31,357.0
SUB-TOTAL	147,468.9	123,881.8	137,512.2
OTHER SOURCES OF LOANS			
SSLA	3,592.0	4,323.6	5,204.2
SMB	13,985.0	17,879.7	22,859.0
PDB	2,911.0	2,994.6	3,080.5
GRAND TOTAL	167,956.9	149,079.6	168,655.9

**Table 8. Agricultural Production Loans: Amount
Granted by Commodity and Sources,
Philippines, 2004-2006** *(concluded)*

ITEM	2004	2005R	2006P
AGRICULTURAL PRODUCTION LOAN TO OUTPUT (GVA) RATIO (%)	22.9	19.2	19.8
AGRICULTURAL LOANS (Million Pesos, at Current Prices)	467,821.8	521,698.3	584,630.8
TOTAL LOANS (Million Pesos, at Current Prices)	16,183,184.3	17,473,841.3	17,915,800.6
AGRICULTURAL LOANS TO TOTAL LOANS GRANTED RATIO (%)	2.9	3.0	3.3

10/ Sourced from ACPC.

CROPS
SUB-SECTOR
STATISTICS

Table 9. Agricultural Crops: Volume of Production, Philippines, 2004-2006

ITEM	2004	2005	2006
TOTAL CROPS ('000 MT)	75,150.7	73,725.9	77,401.1
Palay	14,496.8	14,603.0	15,326.7
Corn	5,413.4	5,253.2	6,082.1
Coconut	14,366.2	14,824.6	14,957.9
Sugarcane	25,579.2	22,917.7	24,345.1
Banana	5,631.3	6,298.2	6,794.6
Pineapple	1,759.8	1,788.2	1,833.9
Coffee	102.9	105.8	104.1
Mango	967.5	984.3	919.0
Tobacco	48.3	45.1	38.4
Abaca	74.5	74.0	69.8
Peanut	27.1	28.4	29.2
Mongo	26.5	26.8	26.0
Cassava	1,640.5	1,677.6	1,756.9
Camote	545.1	574.6	566.8
Tomato	172.3	173.7	175.6
Garlic	15.0	13.2	12.6
Onion	86.7	82.0	76.0
Cabbage	92.8	91.4	91.2
Eggplant	182.7	187.8	191.9
Calamansi	179.0	200.8	196.6
Rubber	311.3	315.6	351.6
Others	3,431.9	3,459.7	3,455.3

**Table 10. Agricultural Crops: Area Planted/Harvested^{1/},
Philippines, 2004-2006**

ITEM	2004	2005	2006
TOTAL CROPS ('000 Has)	12,231.0	12,034.2	12,389.9
Palay	4,126.6	4,070.4	4,159.9
Corn	2,527.1	2,441.8	2,570.7
Coconut	3,258.6	3,243.3	3,337.4
Sugarcane	388.6	368.9	392.3
Banana	414.5	417.8	428.8
Pineapple	48.2	49.2	49.8
Coffee	131.2	128.0	126.1
Mango	158.9	164.1	171.7
Tobacco	33.8	29.6	26.3
Abaca	127.5	136.0	135.9
Peanut	26.9	27.5	27.6
Mongo	36.3	36.1	35.7
Cassava	205.8	204.8	204.6
Camote	120.5	120.6	118.8
Tomato	17.7	17.7	17.1
Garlic	5.3	4.7	4.4
Onion	9.5	8.9	8.4
Cabbage	7.7	7.4	7.3
Eggplant	21.1	21.2	20.9
Calamansi	20.0	20.2	20.3
Rubber	80.7	81.9	94.3
Others	464.4	434.1	431.4

1/Area planted for permanent crops & area harvested for temporary crops.

Table 11. Agricultural Crops: Value of Production, Philippines, 2004-2006

ITEM	2004	2005	2006
TOTAL CROPS			
(Million Pesos, at Current Prices)	384,248.1 R/	410,303.1 R/	459,598.2
Palay	136,994.6	155,668.1	162,309.9
Corn	47,204.8	40,291.7	54,434.9
Coconut	51,718.2	52,775.5	50,258.6
Sugarcane	21,742.3	22,688.5	33,109.3
Banana	35,758.4 R/	43,772.7 R/	47,969.6
Pineapple	8,869.4	9,334.5	7,867.5
Coffee	3,942.0 R/	4,666.5	4,957.8
Mango	16,302.0 R/	16,802.7 R/	18,720.6
Tobacco	2,094.2	2,254.0 R/	1,835.5
Abaca	1,915.1	2,422.3	2,430.1
Peanut	583.0	663.0	682.1
Mongo	563.3	680.8	790.7
Cassava	6,414.4	6,374.7	9,135.7
Camote	3,679.8	4,102.9	4,488.9
Tomato	1,582.1	1,808.7	2,145.7
Garlic	603.6	674.3	1,032.6
Onion	1,275.9	1,961.1 R/	2,168.5
Cabbage	786.8	924.5	1,081.2
Eggplant	2,183.7	2,118.4	2,798.0
Calamansi	1,713.3	2,042.2	2,111.4
Rubber	7,365.4	8,591.7	12,297.6
<i>Others</i>	30,955.7	29,684.4	36,972.0

R/ - Revised.

Table 12. Major Agricultural Crops: Distribution of Production by Region, Philippines, 2006

REGION	PALAY	CORN	COCONUT	SUGAR CANE
PHILIPPINES ('000 MT)	15,326.7	6,082.1	14,957.9	24,345.1
LUZON (%)	56.78	35.94	24.30	15.14
CAR	2.59	2.63	0.01	0.04
Ilocos	10.42	5.26	0.21	0.08
Cagayan Valley	12.75	20.05	0.51	1.01
Central Luzon	17.47	3.00	1.23	4.38
CALABARZON	2.34	0.88	9.74	8.41
MIMAROPA	5.41	1.77	4.46	-
Bicol	5.80	2.34	8.15	1.23
VISAYAS (%)	19.98	8.46	17.55	67.75
Western Visayas	12.97	4.24	3.27	55.11
Central Visayas	1.60	2.98	2.52	10.45
Eastern Visayas	5.42	1.25	11.77	2.19
MINDANAO (%)	23.24	55.60	58.15	17.11
Zamboanga Peninsula	3.35	3.36	11.52	0.00
Northern Mindanao	3.01	15.86	9.97	12.74
Davao Region	3.11	5.65	16.70	2.06
SOCCKSARGEN	7.48	17.89	5.42	2.21
CARAGA	2.67	1.42	6.65	0.00
ARMM	3.62	11.42	7.89	0.11

Table 12a. Major Agricultural Crops: Distribution of Production by Region, Philippines, 2006 *(concluded)*

REGION	PINE-APPLE	BANANA	MANGO	COFFEE
PHILIPPINES ('000 MT)	1,833.9	6,794.6	919.0	104.1
LUZON (%)	12.05	12.12	66.85	19.07
CAR	0.04	0.37	0.38	6.10
Ilocos	0.01	0.62	45.98	0.08
Cagayan Valley	1.31	5.16	5.56	1.00
Central Luzon	0.07	0.75	9.35	1.47
CALABARZON	4.50	1.55	4.52	9.87
MIMAROPA	0.01	2.73	0.88	0.20
Bicol	6.11	0.94	0.18	0.35
VISAYAS (%)	1.39	10.44	11.96	6.32
Western Visayas	0.82	4.66	6.00	5.77
Central Visayas	0.22	2.40	5.90	0.35
Eastern Visayas	0.35	3.38	0.06	0.20
MINDANAO (%)	86.56	77.44	21.19	74.61
Zamboanga Peninsula	0.13	3.50	5.86	1.31
Northern Mindanao	49.67	9.75	3.65	6.05
Davao Region	1.06	43.35	3.65	27.71
SOCCSKSARGEN	35.41	12.23	4.72	25.98
CARAGA	0.23	3.14	1.74	3.00
ARMM	0.06	5.47	1.57	10.57

Table 13. Palay: Production, Area Harvested and Yield per Hectare, Philippines, 2004-2006

ITEM	2004	2005	2006
PRODUCTION (Million MT)			
TOTAL	14.50	14.60	15.33
Irrigated	10.94	11.23	11.60
Rainfed	3.55	3.37	3.73
JANUARY-JUNE	6.04	6.03	6.54
Irrigated	5.01	5.09	5.37
Rainfed	1.03	0.94	1.17
JULY-DECEMBER	8.46	8.57	8.79
Irrigated	5.93	6.14	6.22
Rainfed	2.53	2.43	2.57
AREA (Million Has.)			
TOTAL	4.13	4.07	4.16
Irrigated	2.79	2.79	2.83
Rainfed	1.33	1.28	1.33
JANUARY-JUNE	1.73	1.68	1.77
Irrigated	1.29	1.27	1.30
Rainfed	0.44	0.41	0.47
JULY-DECEMBER	2.40	2.39	2.39
Irrigated	1.50	1.52	1.53
Rainfed	0.90	0.87	0.86
YIELD (MT per Has.) ^{2/}			
TOTAL	3.51	3.59	3.68
Irrigated	3.92	4.02	4.10
Rainfed	2.66	2.63	2.80
JANUARY-JUNE	3.50	3.60	3.70
Irrigated	3.89	4.01	4.13
Rainfed	2.34	2.30	2.49

Table 13. Palay: Production, Area Harvested and Yield per Hectare, Philippines, 2004-2006 *(concluded)*

ITEM	2004	2005	2006
JULY-DECEMBER	3.52	3.58	3.68
Irrigated	3.94	4.03	4.07
Rainfed	2.82	2.79	2.97

2/ Yield per hectare derived prior to rounding-off data on production and hectareage.

Figure 2. Palay: Production and Yield per Hectare, Philippines, 1997-2006

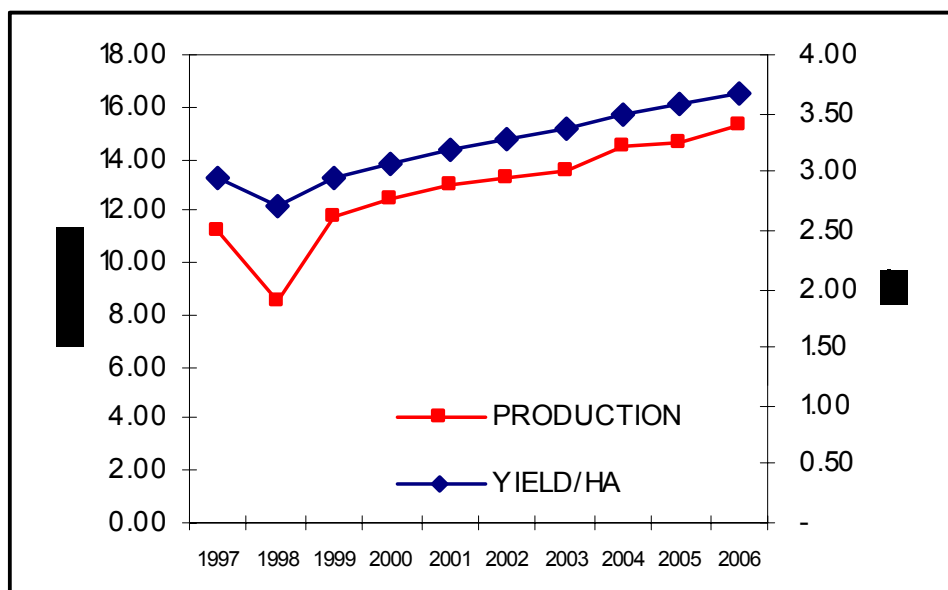


Table 14. Corn: Production, Area Harvested and Yield per Hectare, Philippines, 2004-2006

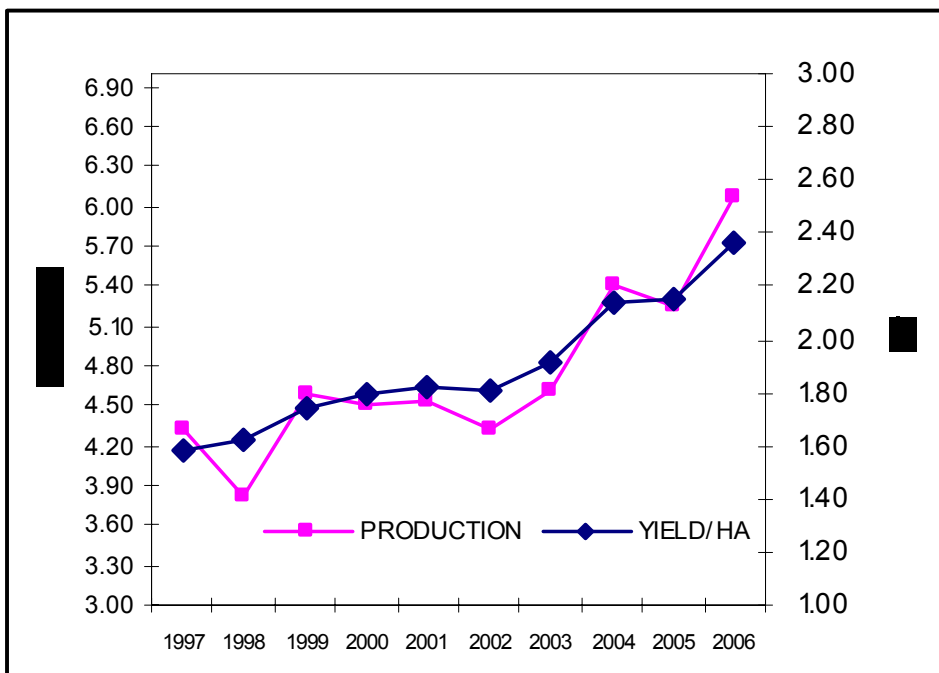
ITEM	2004	2005	2006
PRODUCTION (Million MT)			
TOTAL	5.41	5.25	6.08
White	2.23	2.25	2.36
Yellow	3.19	3.00	3.72
JANUARY-JUNE	2.34	1.97	2.60
White	0.85	0.72	0.87
Yellow	1.49	1.25	1.74
JULY-DECEMBER	3.08	3.28	3.48
White	1.38	1.53	1.49
Yellow	1.70	1.75	1.99
AREA (Million Has.)			
TOTAL	2.53	2.44	2.57
White	1.56	1.49	1.47
Yellow	0.96	0.95	1.10
JANUARY-JUNE	1.02	0.89	1.01
White	0.58	0.50	0.52
Yellow	0.44	0.39	0.49
JULY-DECEMBER	1.51	1.55	1.56
White	0.98	0.99	0.95
Yellow	0.53	0.56	0.61
YIELD (MT per Has.) ^{2/}			
TOTAL	2.14	2.15	2.37
White	1.43	1.51	1.60
Yellow	3.30	3.16	3.39
JANUARY-JUNE	2.30	2.21	2.57
White	1.47	1.45	1.67
Yellow	3.38	3.17	3.52

Table 14. Corn: Production, Area Harvested and Yield per Hectare, Philippines, 2004-2006 *(concluded)*

ITEM	2004	2005	2006
JULY-DECEMBER	2.04	2.12	2.23
White	1.40	1.54	1.57
Yellow	3.23	3.15	3.28

2/ Yield per hectare derived prior to rounding-off data on production and hectareage.

Figure 3. Corn: Production and Yield per Hectare, Philippines 1997-2006



LIVESTOCK AND
POULTRY SUB-SECTOR
STATISTICS

Table 15. Livestock and Poultry: Volume of Production by Type, Philippines, 2004-2006

ITEM	2004	2005	2006P
		('000 MT)	
LIVESTOCK (Liveweight)	2,190.0	2,241.2	2,292.4
Carabao	138.0	133.5	130.4
Cattle	256.0	246.7	238.3
Hog	1,709.4	1,771.3	1,836.1
Goat	75.0	77.3	74.8
Dairy	11.6	12.3	12.8
POULTRY (Liveweight)	1,285.0	1,265.1R	1,252.0
Chicken	1,231.8	1,215.7	1,206.0
Duck	53.2	49.4R	46.0
EGG	353.2	373.6	380.3
Chicken	296.6	320.3	330.3
Duck	56.6	53.2	50.0

Table 16. Livestock and Poultry: Value of Production by Type, Philippines, 2004-2006

ITEM	2004	2005	2006P
		(Million Pesos, at Current Prices)	
LIVESTOCK (Liveweight)	144,768.0	154,618.3	155,372.0
Carabao	6,573.5	6,487.7	6,781.3
Cattle	15,118.2	15,713.0	15,883.1
Hog	117,811.8	126,983.1	127,116.0
Goat	4,986.9	5,090.3	5,220.9
Dairy	277.6	344.2	370.7
POULTRY (Liveweight)	104,472.6	106,272.7	110,232.8
Chicken	78,970.1	79,687.2	81,739.3
Duck	2,576.5	2,778.5	2,718.9
EGG			
Chicken	19,832.3	20,820.8	22,918.8
Duck	3,093.8	2,986.2	2,855.7

Table 17. Livestock and Poultry: Inventory by Type, Philippines, as of January 1, 2004-2007

ITEM	2004	2005	2006	2007P
LIVESTOCK ('000 Head)				
CARABAO	3,270	3,327	3,360	3,343
Dairy	13.1	13.1	13.4	13.2
CATTLE	2,593	2,548	2,519	2,559
Dairy	8.5	10.0	11.3	12.1
HOG	12,562	12,140	13,047	13,459
GOAT	3,358	3,535	3,734	4,038
Dairy	1.3	1.2	1.1	0.9
POULTRY ('000 Birds)				
CHICKEN	122,010	136,003	134,333 R	135,033
Broiler	31,527	40,380	35,987 R	38,191
Layer	17,795	21,679	21,375	23,330
Native ^{1/}	72,688	73,943	76,971 R	73,512
DUCK	10,211	10,439	11,147 R	10,160

Table 18. Livestock and Poultry: Total Number of Heads/Birds Slaughtered/Dressed by Type, Philippines, 2004-2006

ITEM	2004	2005	2006P
NUMBER OF ANIMALS			
SLAUGHTERED ('000 Head)			
Carabao	368	356	347
Cattle	765	737 R	712
Hog	20,242	20,975	21,742
Goat	1,922	2,062	2,531
NUMBER OF BIRDS			
DRESSED (Million Birds)			
Chicken	595	558 R	576
Duck	11	11 R	12

1/ Includes gamefowls in the backyard.

Figure 4. Livestock: Volume of Production by Type, Philippines, 1997-2006

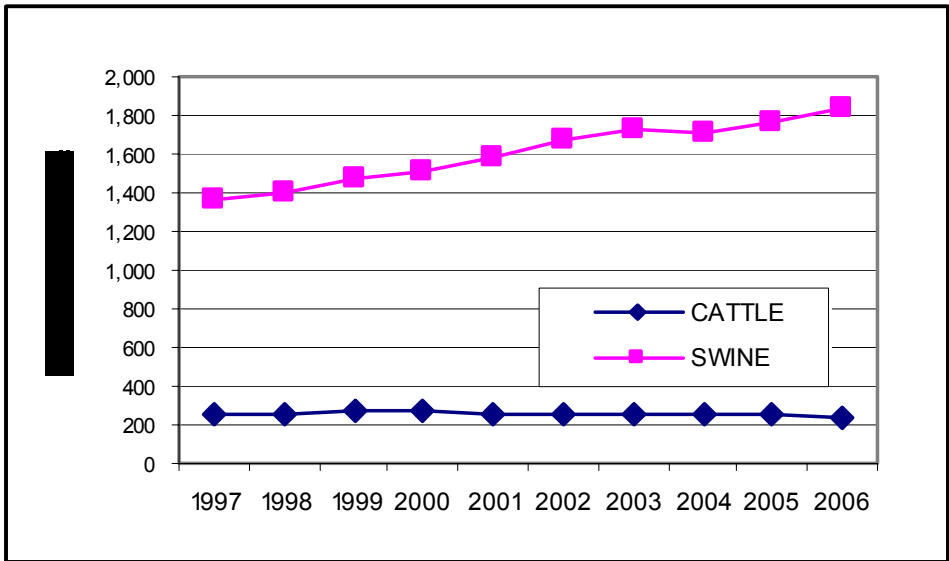


Figure 4a. Poultry: Volume of Production by Type, Philippines, 1997-2006

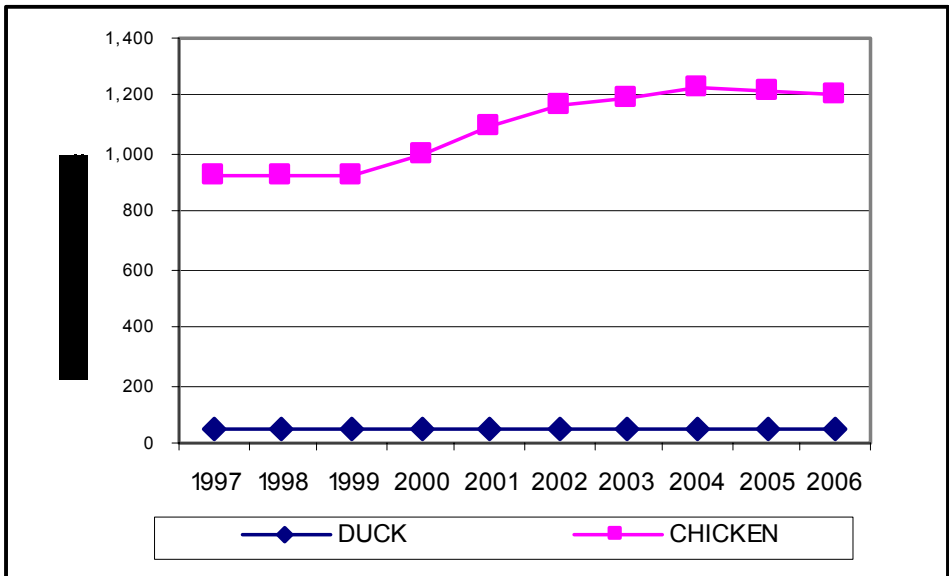


Table 19. Livestock: Distribution of Production by Region, Philippines, 2006

REGION	CARABAO	CATTLE	SWINE	GOAT
PHILIPPINES (‘000 MT)	130.41	238.30	1,836.14	74.82
LUZON (%)	42.11	45.44	50.95	36.58
CAR	3.03	2.43	2.18	1.34
Ilocos	7.40	11.74	3.96	13.34
Cagayan Valley	10.03	5.76	4.93	3.27
Central Luzon	3.61	7.15	16.26	9.16
CALABARZON	4.47	8.48	14.61	3.60
MIMAROPA	5.78	4.47	3.09	3.05
Bicol	7.77	5.41	5.93	2.82
VISAYAS (%)	23.49	20.40	22.15	23.60
Western Visayas	13.91	8.23	8.51	10.20
Central Visayas	3.95	10.93	7.21	11.38
Eastern Visayas	5.64	1.24	6.43	2.02
MINDANAO (%)	34.40	34.16	26.90	39.83
Zamboanga Peninsula	5.37	6.64	4.99	5.59
Northern Mindanao	5.20	12.29	6.06	5.60
Davao Region	7.26	4.83	6.91	9.69
SOCSSKARGEN	9.50	5.66	5.35	9.15
CARAGA	2.80	0.60	3.16	2.35
ARMM	4.27	4.14	0.42	7.44

**Table 20. Poultry: Distribution of Production
by Region, Philippines, 2006**

REGION	CHICKEN	DUCK	CHICKEN EGGS	DUCK EGGS
PHILIPPINES (‘000 MT)	1,205.95	45.99	330.28	50.03
LUZON (%)	65.46	56.73	59.47	51.86
CAR	0.59	2.23	0.82	1.83
Ilocos	5.50	4.79	3.75	4.22
Cagayan Valley	3.57	13.67	3.03	12.09
Central Luzon	33.50	24.46	17.57	22.33
CALABARZON	19.57	7.38	26.06	7.91
MIMAROPA	0.63	0.78	1.23	0.62
Bicol	2.10	3.42	7.00	2.86
VISAYAS (%)	14.41	13.25	18.72	17.96
Western Visayas	5.81	8.23	6.68	12.48
Central Visayas	5.67	1.08	10.36	1.20
Eastern Visayas	2.92	3.95	1.68	4.28
MINDANAO (%)	20.14	30.02	21.81	30.19
Zamboanga Peninsula	2.32	2.50	2.57	2.91
Northern Mindanao	5.99	6.07	8.59	6.34
Davao Region	7.22	6.45	6.55	5.28
SOCSSKARGEN	2.69	9.04	2.27	9.54
CARAGA	1.24	2.40	0.72	2.04
ARMM	0.69	3.57	1.11	4.07

FISHERIES SECTOR
STATISTICS

Table 21. Fisheries: Volume of Production by Sub-Sector, Philippines, 2004-2006

ITEM	2004	2005	2006
	('000 MT)		
Total	3,926.1	4,161.8	4,408.5
Commercial	1,128.4	1,134.0	1,080.7
Municipal	1,080.7	1,132.0	1,235.5
Marine	938.7	988.2	1,074.1
Inland	142.0	143.8	161.4
Aquaculture	1,717.0	1,895.8	2,092.3
Brackishwater Fishpond ^{1/}	262.6	277.2	281.3
Freshwater Fishcage/pen ^{2/}	105.4	114.4	126.6
Freshwater Fishpond	75.5	84.5	118.3
Marine Fishcage/pen	37.8	44.5	60.6
Others	1,235.7	1,375.2	1,505.5
Oyster	15.9	16.5	16.9
Mussel	15.0	20.1	19.7
Seaweed	1,204.8	1,338.6	1,468.9

^{1/} Includes brackishwater pen/cage.

^{2/} Includes small farm reservoir.

Table 22. Fisheries: Value of Production by Sub-Sector, Philippines, 2004-2006

ITEM	2004	2005	2006
	(Million Pesos, at Current Prices)		
Total	138,846.5	146,392.9	163,374.4
Commercial	48,349.3	47,272.7	48,555.9
Municipal	45,674.9	49,950.4	59,146.6
Marine	41,166.9	45,318.6	53,939.8
Inland	4,508.0	4,631.8	5,206.8
Aquaculture	44,822.3	49,169.8	55,671.9

Table 23. Fisheries: Distribution of Production by Sub-Sector and Region, Philippines, 2006

REGION	MARINE	INLAND	AQUA-CULTURE
PHILIPPINES ('000 MT)	2,154.8	161.4	2,092.3
LUZON (%)	35.89	67.49	43.71
CAR	-	0.54	0.13
Ilocos	1.79	1.80	4.15
Cagayan Valley	1.65	4.54	0.56
Central Luzon	1.60	6.31	9.15
NCR - Metro Manila	3.63		0.13
CALABARZON	5.56	51.98	7.10
MIMAROPA	14.26	0.44	19.41
Bicol	7.40	1.88	3.08
VISAYAS (%)	22.55	5.52	12.73
Western Visayas	11.39	3.62	6.38
Central Visayas	4.63	0.11	4.90
Eastern Visayas	6.53	1.79	1.45
MINDANAO (%)	41.56	26.99	43.55
Zamboanga Peninsula	15.75	0.41	11.04
Northern Mindanao	3.40	1.23	2.46
Davao Region	2.07	0.10	0.63
SOCCSKSARGEN	9.98	11.36	1.17
CARAGA	3.22	2.70	1.17
ARMM	7.14	11.19	27.08

Table 24. Fisheries: Volume of Production by Major Species, Philippines, 2004-2006

SUB-SECTOR/ TOP SPECIES	2004	2005	2006
Marine Species ('000 MT)	2,067.1	2,122.2	2,154.8
Roundscad	293.9	280.8	260.1
Indian sardines	193.6	247.1	209.7
Frigate tuna	208.1	174.0	175.4
Skipjack	143.1	143.1	164.3
Fimbriated sardines	70.0	84.2	89.2
Yellowfin and bigeye tuna	129.6	135.7	142.9
Anchovies	71.5	68.9	70.6
Big-eye scad	103.4	91.5	94.0
Slipmouth	68.8	67.7	67.4
Indian mackerel	75.4	84.3	89.1
Squid	56.2	59.8	57.6
Flying fish	33.6	27.9	31.0
Blue crabs	34.3	34.4	31.0
Threadfin breams	41.2	45.3	51.2
Indo-pacific mackerel	42.8	46.8	50.8
Eastern little tuna	44.9	77.7	78.3
Siganid	19.1	22.4	25.8
Snapper	12.8	12.5	14.8
Crevalle	36.4	37.4	40.8
Cavalla	15.8	17.9	21.8
Other species	372.6	362.8	389.0
Aquaculture Species ('000 MT)	1,717.0	1,895.8	2,092.3
Seaweeds	1,204.8	1,338.6	1,468.9
Milkfish	273.5	289.2	315.1
Tilapia	145.9	163.0	202.0
Tiger prawn	35.9	37.7	38.2
Carp	13.8	17.2	16.6
Oyster	15.9	16.5	16.8
Mussel	15.0	20.1	19.7
Mudcrab	6.2	6.8	7.8
Catfish	1.9	2.4	2.4
Other species	4.1	4.3	4.8

Table 24. Fisheries: Volume of Production by Major Species, Philippines, 2004-2006 *(concluded)*

SUB-SECTOR/ TOP SPECIES	2004	2005	2006
Inland Species ('000 MT)	142.0	143.8	161.4
Snail (<i>Suso</i>)	48.7	52.5	58.0
Tilapia	31.9	32.5	39.7
Carp (<i>Carpa</i>)	10.5	9.7	8.7
Mudfish (<i>Dalag</i>)	8.3	8.1	8.3
Freshwater goby (<i>Biya</i>)	5.6	5.4	5.7
Freshwater catfish (<i>Kanduli</i>)	3.6	3.0	2.0
Gourami	4.8	3.8	5.1
Freshwater shrimp (<i>Hipon</i>)	4.8	4.7	4.7
Other fish species	15.6	15.9	20.0
Other crustaceans	3.7	4.0	3.9
Other molluscs	4.5	4.2	5.3

Figure 5. Fisheries: Volume of Production, Philippines, 1997-2006

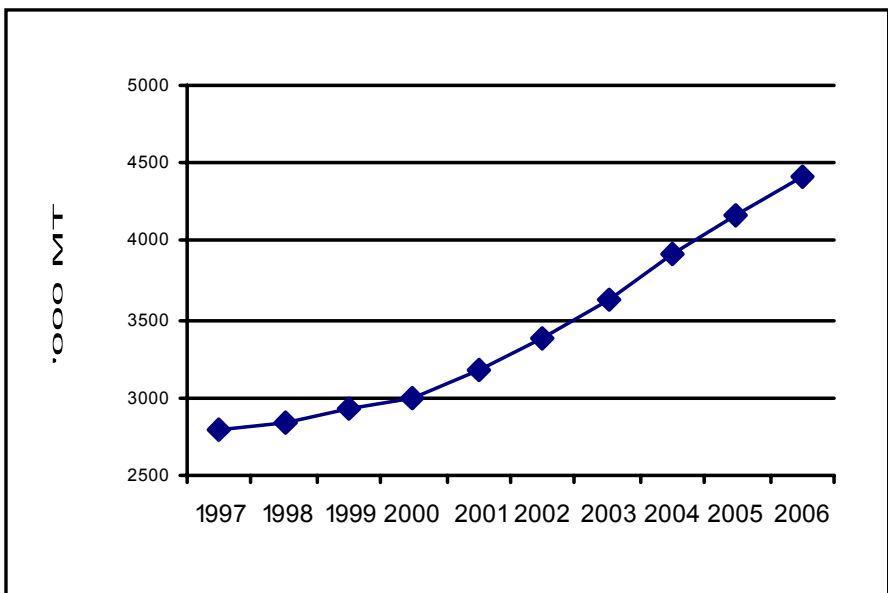


Table 25. Aquaculture: Value of Production by Culture Environment and Species, Philippines, 2004-2006

ENVIRONMENT/SPECIES	2004	2005	2006
All Types of Culture			
Environment (Million Pesos)	44,822.3	49,169.8	55,671.9
Brackishwater Fishpond ^{1/}	27,507.4	29,499.4	31,368.1
Freshwater Fishcage/pen ^{2/}	5,087.6	5,605.8	6,308.2
Freshwater Fishpond	4,044.6	4,616.0	6,895.1
Marine Fishcage/pen	2,721.3	3,162.9	4,507.7
Others ^{3/}	5,461.4	6,285.7	6,592.8
All Species (Million Pesos)	44,822.3	49,169.8	55,671.9
Seaweeds	5,261.4	6,040.9	6,346.7
Milkfish	16,238.6	17,577.0	20,146.0
Tilapia	7,734.6	8,900.6	11,388.8
Tiger Prawn	12,855.0	13,623.6	14,292.2
Mussel	88.8	138.9	125.8
Oyster	111.0	106.0	120.3
Carp	344.4	365.7	327.7
Mudcrab	1,590.5	1,693.5	2,023.8
Catfish	114.7	146.5	156.9
Other species	483.3	577.1	743.7

1/ Includes brackishwater pens/cages.

2/ Includes small farm reservoir.

3/ Others include seaweeds, mussel and oyster.

PRODUCTION
COSTS AND RETURNS

Table 26. All Palay: Production Costs and Returns by Season, Philippines, 2006 P

ITEM	DRY	WET	AVERAGE
	(pesos per hectare)		
Gross Returns	40,017	37,128	38,535
Cash Cost	12,175	12,208	12,152
Non-Cash Cost	9,352	8,980	9,164
Imputed Cost	7,783	6,889	7,330
Total Cost	29,311	28,077	28,647
Net Returns	10,706	9,051	9,888
Net Profit-Cost Ratio	0.37	0.32	0.35
Cost Per Kilogram (Pesos)	7.93	7.64	7.78

Table 26a. Irrigated Palay: Production Costs and Returns by Season, Philippines, 2006 P

ITEM	DRY	WET	AVERAGE
	(pesos per hectare)		
Gross Returns	44,728	41,158	42,886
Cash Cost	13,634	13,655	13,647
Non-Cash Cost	10,209	9,611	9,913
Imputed Cost	8,120	7,000	7,561
Total Cost	31,963	30,267	31,121
Net Returns	12,765	10,890	11,765
Net Profit-Cost Ratio	0.40	0.36	0.38
Cost Per Kilogram (Pesos)	7.74	7.43	7.59

Table 26b. Non-irrigated Palay: Production Costs and Returns by Season, Philippines, 2006 P

ITEM	DRY	WET	AVERAGE
	(pesos per hectare)		
Gross Returns	26,945	30,017	29,309
Cash Cost	8,743	8,457	8,646
Non-Cash Cost	7,583	7,438	7,430
Imputed Cost	6,994	6,589	6,791
Total Cost	23,319	22,484	22,867
Net Returns	3,626	7,533	6,442
Net Profit-Cost Ratio	0.16	0.34	0.28
Cost Per Kilogram (Pesos)	9.37	7.57	8.16

Table 27. All Corn: Production Costs and Returns by Season, Philippines, 2006 P

ITEM	DRY	WET	AVERAGE
	(pesos per hectare)		
Gross Returns	24,447	19,436	21,483
Cash Cost	7,764	8,221	7,986
Non-Cash Cost	2,023	1,923	1,962
Imputed Cost	6,578	5,728	6,149
Total Cost	16,365	15,872	16,097
Net Returns	8,082	3,564	5,386
Net Profit-Cost Ratio	0.49	0.22	0.33
Cost Per Kilogram (Pesos)	6.37	7.10	6.80

Table 27a. White Corn: Production Costs and Returns by Season, Philippines, 2006 P

ITEM	DRY	WET	AVERAGE
	(pesos per hectare)		
Gross Returns	15,162	14,099	14,484
Cash Cost	5,222	5,992	5,629
Non-Cash Cost	1,596	1,760	1,676
Imputed Cost	6,412	5,739	6,058
Total Cost	13,230	13,491	13,363
Net Returns	1,932	608	1,121
Net Profit-Cost Ratio	0.15	0.05	0.08
Cost Per Kilogram (Pesos)	7.93	8.59	8.33

Table 27b. Yellow Corn: Production Costs and Returns by Season, Philippines, 2006 P

ITEM	DRY	WET	AVERAGE
	(pesos per hectare)		
Gross Returns	34,256	27,830	30,837
Cash Cost	11,654	12,492	12,043
Non-Cash Cost	2,406	2,097	2,244
Imputed Cost	6,818	5,715	6,306
Total Cost	20,878	20,304	20,593
Net Returns	13,378	7,526	10,244
Net Profit-Cost Ratio	0.64	0.37	0.50
Cost Per Kilogram (Pesos)	5.94	6.19	6.08

Table 28. Other Major Crops: Production Costs and Returns, Philippines, 2006 P

ITEM	MANGO	PINE-APPLE	COFFEE	EGG-PLANT
	(pesos per hectare)			
Gross Returns	116,572	158,704	38,401	131,054
Cash Cost	30,240	44,385	21,393	64,540
Non-Cash Cost	3,881	471	775	2,629
Imputed Cost	16,224	15,680	8,044	30,869
Total Cost	50,345	60,536	30,212	98,038
Net Returns	66,227	98,168	8,189	33,016
Net Profit-Cost Ratio	1.32	1.62	0.27	0.34
Cost Per Kilogram (Pesos)	9.37	1.64	36.58	10.69

PRICE STATISTICS

**Table 29. Consumer Price Index, Philippines,
2004-2006 (2000=100) ^{1/}**

ITEM	2004	2005	2006P
ALL ITEMS	120.6	129.8	137.9
Food, Beverages and Tobacco	116.3	123.8	130.6
Non-Food	125.0	135.8	145.3

1/ Sourced from NSO.

**Table 30. Producer Price Index, Philippines,
2004-2006 (1994=100)**

ITEM	2004	2005	2006P
Cereals	173.9	182.0	187.7
Vegetables and Legumes	148.0	156.8	188.5
Rootcrops	192.4	193.4	239.8
Fruits	118.7	121.4	129.6
Commercial	158.3	170.6	191.6
Livestock	159.2	168.5	165.7
Poultry	147.1	153.6	159.1
ALL ITEMS	155.7	161.6	170.8

Table 31. Cereals: Average Domestic and World Prices by Type, Philippines, 2004-2006

ITEM	2004	2005	2006P
DOMESTIC PRICE (P/kg)			
Palay/Rice, Special			
Farm	9.45	10.43	10.46
Wholesale	19.12	20.93	21.39
Retail	21.04	22.88	23.56
Corngrain			
<i>Corngrain, white</i>			
Farm	9.13	8.41	9.03
Wholesale	10.06	9.57	11.42
Retail	15.14	15.25	15.72
<i>Corngrain, yellow</i>			
Farm	8.49	7.54	9.11
Wholesale	10.14	9.48	10.85
Retail	14.40	14.30	14.65
WORLD PRICE (\$/kg) 2/			
Cereals			
<i>Rice</i>			
5% brokens	0.24	0.29	0.30
25% brokens	0.23	0.27	0.28
35% brokens	0.22	0.26	0.27
<i>Corn</i>			
Yellow	0.11	0.10	0.12

2/ Sourced from World Bank.

Table 32. Selected Crops: Average Annual Prices, Philippines, 2004-2006

ITEM	2004	2005	2006P
	(P/kg)		
Coconut			
<i>Copra (corriente)</i>			
Farm	16.06	13.78	12.75
Wholesale	15.92	13.66	12.06
Matured nuts			
Farm	3.59	3.58	3.37
Wholesale	10.40	11.68	11.89
Retail	9.69	10.49	10.57
Young nuts			
Farm	2.95	2.99	2.81
Sugar, centrifugal			
Farm	15.05	17.04	22.08
Coffee, dry beans			
Robusta			
Farm	34.29	39.61	45.60
Wholesale	35.69	41.74	46.61
Arabica			
Farm	53.38	61.21	51.02
Excelsa			
Farm	36.65	35.24	40.98
Wholesale	38.97	40.11	45.04
Rubber (cup lump)			
Farm	23.65	26.38	36.02
Wholesale	24.42	24.53	34.29
Banana			
Bungulan			
Farm	5.57	6.27	4.58
Wholesale	6.16	6.30	6.23

Table 32. Selected Crops: Average Annual Prices, Philippines, 2004-2006 *(concluded)*

ITEM	2004	2005	2006P
	(P/kg)		
Latundan			
Farm	6.11	6.73	6.93
Wholesale	10.70	11.60	12.10
Retail	14.60	15.40	15.90
Lakatan			
Farm	7.84	8.61	8.83
Wholesale	14.31	15.66	15.39
Retail	19.35	20.52	21.60
Saba			
Farm	4.30	4.60	4.52
Wholesale	8.19	9.18	8.82
Retail	10.80	11.88	12.15
Pineapple Hawaiian			
Farm	4.77	5.24	4.30
Wholesale	7.04	6.90	6.70
Retail	10.62	11.02	11.54
Mango Carabao			
Farm	22.64	23.87	24.75
Wholesale	33.42	34.74	38.27
Retail	46.24	46.72	50.88
Cassava			
Farm	4.08	3.90	5.15
Wholesale	5.38	4.79	5.21
Camote			
Farm	6.73	7.10	7.96
Wholesale	9.22	9.51	11.11
Retail	14.50	14.54	16.87

Table 33. Selected Livestock and Poultry: Average Annual Prices, Philippines, 2004-2006

ITEM	2004	2005	2006P
		(P/kg)	
LIVESTOCK ^{3/}			
Carabao			
Farm (<i>liveweight</i>)	46.15	48.52	52.01
Cattle			
Farm (<i>liveweight</i>)	58.38	63.65	66.61
Retail (<i>beef lean meat</i>)	161.62	174.27	178.44
Hog			
Farm (<i>liveweight</i>)	67.88	71.67	69.30
Retail (<i>pork lean meat</i>)	132.43	139.28	138.44
Goat			
Farm	65.68	65.87	69.72
POULTRY (P/kg)			
Chicken (broiler) ^{3/}			
Farm	72.49	76.73	78.52
Wholesale ^{4/}	63.89	64.40	68.19
Retail	82.61	88.13	90.19
Duck ^{3/}			
Farm	51.50	61.58	63.88

^{3/} Backyard.

^{4/} Metro Manila.

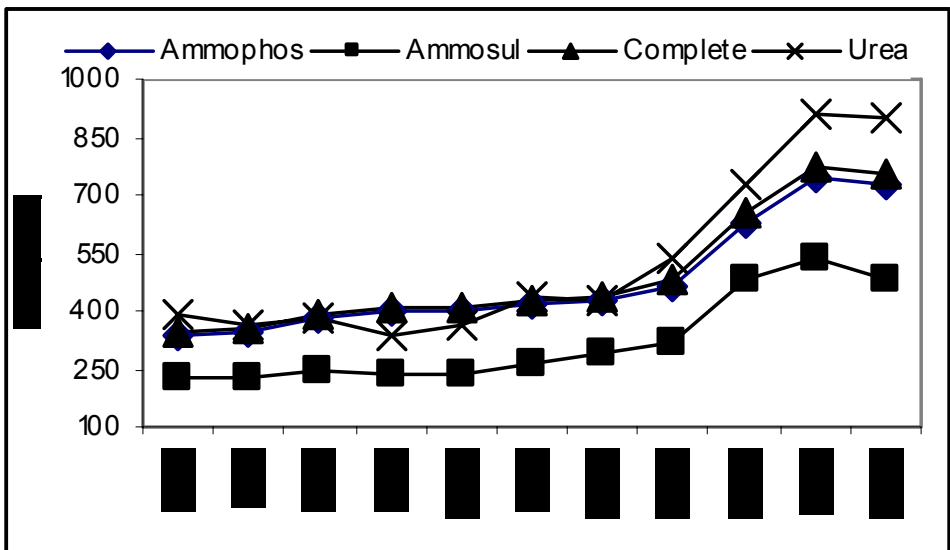
Table 34. Selected Fish Species: Average Annual Wholesale and Retail Prices, Philippines, 2004-2006

ITEM	2004	2005	2006P
	(P/kg)		
FISHERY PRODUCTS			
Bangus (<i>Milkfish</i>)			
Wholesale	68.75	69.82	73.50
Retail	85.12	87.36	89.59
Dilis (<i>Anchovies</i>)			
Wholesale	35.33	38.98	41.43
Retail	53.76	55.91	60.52
Galunggong (<i>Roundscad</i>)			
Wholesale	48.07	47.43	53.31
Retail	66.19	66.99	73.43
Sapsap (<i>Slipmouth</i>)			
Wholesale	41.63	43.85	54.94
Retail	83.77	91.77	100.49
Tilapia			
Wholesale	51.36	53.97	54.57
Retail	67.38	69.29	70.46
Tulingan (<i>Frigate Tuna</i>)			
Wholesale	54.08	55.63	60.90
Retail	66.42	67.81	72.27

**Table 35. Fertilizers: Average Dealers' Prices by Grade
Philippines, 2004-2006 (P50/kg. Bag)**

ITEM	2004	2005	2006P
UREA	728.22	905.38	899.64
AMMOSUL	482.51	534.41	482.48
COMPLETE	653.07	771.44	751.71
AMMOPHOS	626.59	748.61	728.51

**Figure 6. Fertilizers: Average Dealers' Prices by Grade,
Philippines, 1996-2006 (P50/kg. Bag)**



AGRICULTURAL
FOREIGN TRADE
STATISTICS

Table 36. Top Agricultural Exports: Volume and Value, Philippines, 2004-2006

ITEM	2004	2005	2006P
VOLUME OF TOP EXPORTS ('000 MT)			
Coconut Oil	959.40	1,152.32	1,069.48
Banana, Fresh	1,797.34	2,024.32	2,303.93
Pineapple & Products	527.56	536.72	683.65
Tuna	78.33	45.05	59.79
Desiccated Coconut	105.83	125.54	136.20
Tobacco Manufactured	17.82	21.06	19.17
Shrimps & Prawns	15.34	12.67	13.17
Milk & Cream & Products	32.93	37.55	33.86
Fertilizer Manufactured	336.03	410.21	356.45
Seaweeds & Carageenan	44.26	30.81	29.74
Mango, fresh	33.66	31.27	26.12
VALUE OF TOTAL AGRICULTURAL EXPORTS			
(FOB in Million US\$)	2,506.70	2,691.19	2,780.69
VALUE OF TOP EXPORTS (F.O.B. in Million US \$)			
Coconut Oil	577.79	657.22	578.72
Banana, Fresh	326.40	362.58	404.16
Pineapple & Products	176.65	204.28	221.52
Tuna	155.33	102.01	143.33
Desiccated Coconut	99.74	127.14	138.82
Tobacco Manufactured	102.37	112.81	103.41
Shrimps & Prawns	112.35	93.51	98.54
Milk & Cream & Products	74.43	79.94	93.12
Fertilizer Manufactured	66.91	92.27	83.51
Seaweeds & Carageenan	89.89	71.90	71.59
Mango, fresh	28.74	26.63	23.96

Table 37. Top Agricultural Exports: Volume and Value by Major Markets, Philippines, 2006

COMMODITY/ COUNTRY OF DESTINATION	VOLUME	VALUE	% SHARE (VALUE)
VOLUME AND VALUE ('000 MT, F.O.B. in Million US\$)			
Coconut Oil (crude and refined)	1,069.48	578.72	100.00
Netherlands	417.55	222.30	38.41
United States of America	404.23	218.50	37.76
Japan (Excludes Okinaw a)	64.20	40.49	7.00
Malaysia (Federation of Malaya)	37.33	19.51	3.37
Korea, Republic of (South)	33.56	17.98	3.11
Others	112.62	59.94	10.36
Banana, fresh	2,303.93	404.16	100.00
Japan (Excludes Okinaw a)	906.90	168.86	41.78
Iran, Islamic Republic of	374.67	63.17	15.63
Korea, Republic of (South)	261.55	47.51	11.76
Taiwan (Republic of China)	207.16	32.93	8.15
United Arab Emirates	207.49	32.81	8.12
Others	346.14	58.88	14.57
Pineapple and Pineapple Products	683.65	221.52	100.00
United States of America	319.51	103.37	46.66
Japan (Excludes Okinaw a)	171.47	42.30	19.09
Korea, Republic of (South)	64.01	15.80	7.13
Netherlands	16.93	12.20	5.51
Australia	8.30	5.19	2.34
Others	103.43	42.66	19.26
Tuna	59.79	143.33	100.00
United States of America	10.74	33.79	23.58
Germany	12.75	28.77	20.07
Japan (Excludes Okinaw a)	4.50	18.78	13.10
Thailand	8.29	8.99	6.27
Singapore	2.50	6.64	4.63
Others	21.01	46.36	32.35

**Table 37. Top Agricultural Exports: Volume and Value
by Major Markets, Philippines, 2006 (cont.)**

COMMODITY/ COUNTRY OF DESTINATION	VOLUME	VALUE	% SHARE (VALUE)
Desiccated Coconut	136.20	138.82	100.00
United States of America	36.42	38.70	27.87
UK Great Britain and Northern Ireland	16.70	18.59	13.39
Canada	9.17	9.71	7.00
Belgium	9.26	9.12	6.57
Netherlands	9.15	8.38	6.04
Others	55.51	54.32	39.13
Tobacco, Manufactured	19.17	103.41	100.00
Thailand	9.93	61.66	59.63
Korea, Republic of (South)	1.52	10.36	10.02
Vietnam	0.85	9.33	9.02
Singapore	0.86	4.55	4.40
Hongkong	3.40	4.01	3.87
Others	2.61	13.51	13.06
Shrimps and Prawns	13.17	98.54	100.00
Japan (Excludes Okinawa)	5.71	46.96	47.66
Korea, Republic of (South)	4.12	27.50	27.91
United States of America	1.90	12.59	12.78
Canada	0.23	2.84	2.88
Guam	0.27	2.27	2.31
Others	0.93	6.38	6.47
Milk and Cream and Products	33.86	93.12	100.00
Indonesia (Includes West Irian)	16.92	44.96	48.29
Malaysia (Federation of Malaya)	11.88	34.66	37.22
Thailand	1.11	3.09	3.32
Vietnam	0.66	1.90	2.04
United States of America	0.57	1.41	1.52
Others	2.72	7.09	7.61

**Table 37. Top Agricultural Exports: Volume and Value
by Major Markets, Philippines, 2006** *(concluded)*

COMMODITY/ COUNTRY OF DESTINATION	VOLUME	VALUE	% SHARE (VALUE)
Fertilizer, Manufactured	356.45	83.51	100.00
Vietnam	209.06	45.80	54.84
Indonesia (Includes West Irian)	51.39	12.84	15.38
Malaysia (Federation of Malaya)	41.86	10.64	12.74
Thailand	18.13	4.17	5.00
India	10.00	2.85	3.41
Others	26.01	7.20	8.63
Mango Fresh	26.12	23.96	100.00
Japan (Excludes Okinawa)	6.48	13.43	56.05
Hongkong	14.09	6.06	25.29
Korea, Republic of (South)	1.15	2.31	9.64
China	3.51	1.25	5.22
Singapore	0.51	0.35	1.46
Others	0.38	0.56	2.34
Seaweed and Carageenan	29.74	71.59	100.00
United States of America	5.36	10.17	14.21
France	4.75	6.84	9.55
Canada	1.62	5.65	7.90
Russian Federations	0.85	5.07	7.08
Belgium	1.47	5.01	6.99
Others	15.69	38.85	54.27

Source: NSO.

**Table 38. Crops Exports: Volume and Value,
Philippines, 2004-2006**

ITEM	2004	2005	2006P
VOLUME OF EXPORTS ('000 MT)			
Banner Crops			
Abaca	19.76	13.44	14.17
Nata de Coco	7.51	6.00	4.75
Asparagus	2.62	3.12	3.62
Papaws (fresh/dried)	4.65	4.14	4.73
Shallots	27.37	20.66	13.30
Onions (fresh/dried/pow dered)	0.82	0.38	0.09
Kaong	0.72	0.64	0.68
Manioc (Cassava) & Tapioca	0.73	0.60	0.10
Coconut (Young)	3.25	2.79	2.07
Yam (fresh/dried/pow dered)	0.16	0.22	0.26
Garlic	4.67	5.94	3.85
VALUE OF EXPORTS (F.O.B in Million US \$)			
Banner Crops			
Abaca	14.54	11.91	12.87
Nata de Coco	5.42	4.39	3.62
Asparagus	4.89	6.67	7.67
Papaws (fresh/dried)	5.44	5.09	5.70
Shallots	6.05	4.38	3.28
Onions (fresh/dried/pow dered)	0.30	0.11	0.04
Kaong	1.27	1.13	1.23
Manioc (Cassava) & Tapioca	1.13	0.83	0.12
Coconut (Young)	0.67	0.69	0.62
Yam (fresh/dried/pow dered)	0.38	0.48	0.49
Garlic	1.65	1.98	1.26

Table 39. Selected Philippine Exports: Percentage Share in World Market, 2004-2005

COMMODITY	2004		2005	
	WORLD 1/	PHIL.	WORLD 1/	PHIL.
VOLUME OF EXPORTS ('000 MT)				
Coconut oil	2,032.53	959.40	2,385.65	1,152.32
Banana fresh	16,262.61	1,797.34	17,824.65	2,024.32
Pineapple & Pineapple products	3,532.25	527.56	3,915.09	536.72
Mango Fresh	908.44	33.66		
Dessicated Coconut	289.23	105.83	277.32	125.54

COMMODITY	2004	2005
	PHILIPPINE SHARE (%)	
VOLUME OF EXPORTS ('000 MT)		
Coconut oil	47.2	48.3
Banana fresh	11.05	11.36
Pineapple & Pineapple products	14.94	13.71
Mango Fresh	3.71	
Dessicated Coconut	36.59	45.27

1/ Sourced from FAO.

Table 40. Top Agricultural Imports: Volume and Value, Philippines, 2004-2006

ITEM	2004	2005	2006P
VOLUME OF TOP IMPORTS ('000 MT)			
Wheat and Meslin	2,155.07	2,049.84	2675.16
Rice	1,001.11	1,822.20	1715.82
Milk & Cream & Products	313.07	243.42	267.45
Soya bean Oil Cake/Meal	1,160.18	1,433.07	1356.23
Tobacco, Unmanufacture	58.31	72.44	63.89
Meat of Bovine Animals	110.06	93.86	92.01
Palm Oil, (crude & refined)	98.11	208.04	197.48
Food preparations for infant use	12.93	22.16	16.99
Maize	22.91	70.97	306.88
Non-alcoholic concentrates	44.39	47.46	22.97
VALUE OF TOTAL AGRICULTURAL IMPORTS			
(C.I.F. in Million US \$)	3,651.35	3,975.62	4,315.32
VALUE OF TOP IMPORTS (C.I.F. in Million US \$)			
Wheat and Meslin	382.43	377.23	531.79
Rice	263.05	549.95	515.04
Milk & Cream & Products	431.24	367.22	413.04
Soya bean Oil Cake/Meal	355.41	384.23	317.91
Tobacco, Unmanufacture	175.79	191.01	169.4
Meat of Bovine Animals	124.39	114.44	117.69
Palm Oil, (crude & refined)	52.74	90.83	83.89
Food preparations for infant use	53.45	101.48	82.12
Maize	13.51	27.01	58.85
Non-alcoholic concentrates	85.06	97.16	54.01

Table 41. Other Major Agricultural Imports: Volume and Value, Philippines, 2004-2006

ITEM	2004	2005	2006P
VOLUME OF IMPORTS ('000 MT)			
LIVESTOCK & POULTRY			
Live Bovine (Head)	0.05	0.02	0.02
Meat of Bovine, frozen	109.86	93.86	92.01
Live Chicken (Head)	0.01	0.03	0.02
Chicken Meat, frozen	20.43	26.09	32.76
VEGETABLES			
Garlic	23.14	27.42	41.82
Onion	8.16	30.67	76.25
Cauliflower & Headed broccoli	0.20	0.20	0.17
Potatoes	7.88	10.77	12.63
VALUE OF IMPORTS (C.I.F. in Million US \$)			
LIVESTOCK & POULTRY			
Live Bovine (Head)	23.34	12.34	11.17
Meat of Bovine, frozen	124.21	114.44	117.69
Live Chicken (Head)	1.03	1.89	1.91
Chicken Meat, frozen	12.64	17.27	20.63
VEGETABLES			
Garlic	6.32	6.72	10.65
Onion	2.87	5.00	12.02
Cauliflower & Headed broccoli	0.12	0.08	0.08
Potatoes	2.11	2.91	4.45

SUPPLY
AND UTILIZATION
ACCOUNTS

Table 42. Rice: Supply and Utilization Accounts, Philippines, 2004-2006 (in thousand metric tons)

ITEM	2004	2005	2006
Gross Supply	12,844	13,423	13,833
Beginning Stocks	2,362	2,051	2,094
Production	9,481	9,550	10,024
Imports	1,001	1,822	1,715
Utilization			
Exports	a/	a/	a/
Seeds	202	200	204
Feeds & Waste	616	621	652
Processing	379	382	401
Net Food Disposable	9,596	10,126	10,323
Per Capita Consumption			
kg./yr.	116.09	118.80	118.69
grams/day	318.05	325.48	325.18
Ending Stock	2,051	2,094	2,253

a/ Less than 1 thousand metric tons.

Figure 7. Rice: Per Capita Consumption, Philippines, 1997-2006

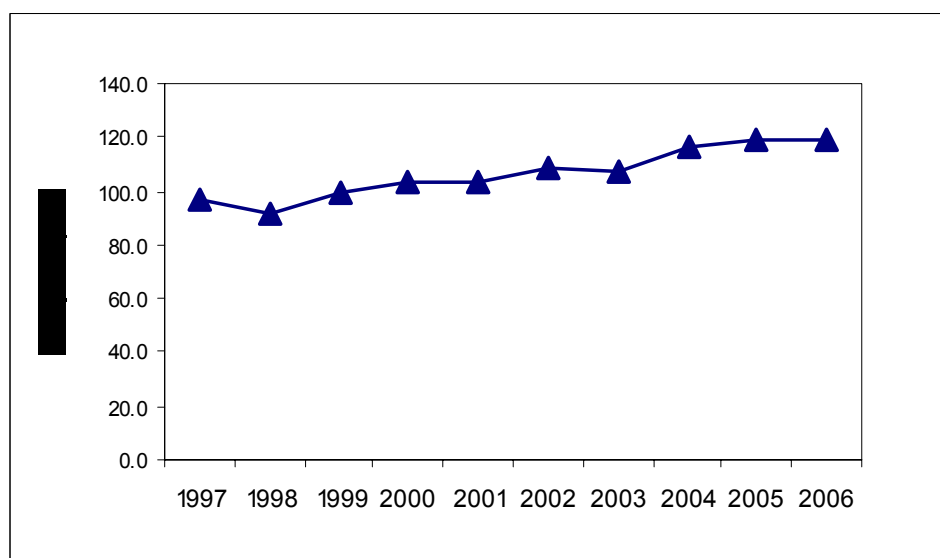
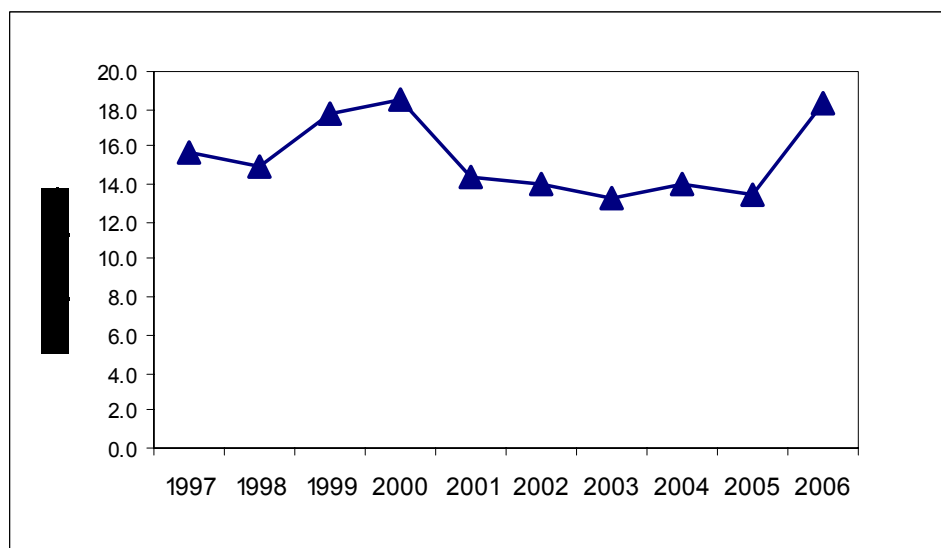


Table 43. Corn: Supply and Utilization Accounts, Philippines, 2004-2006 (in thousand metric tons)

ITEM	2004	2005	2006
Gross Supply	5,647	5,515	6,593
Beginning Stocks	211	191	204
Production	5,413	5,253	6,082
Imports	23	71	307
Utilization			
Exports	a/	a/	a/
Seeds	51	49	51
Feeds & Waste	3,518	3,414	3,953
Processing	722	701	811
Net Food Disposable	1,165	1,147	1,601
Per Capita Consumption			
kg./yr.	14.09	13.46	18.41
grams/day	38.60	36.88	50.44
Ending Stock	191	204	177

a/ Less than 1 thousand metric tons.

Figure 8. Corn: Per Capita Consumption, Philippines, 1997-2006

**Table 44. Sugarcane: Supply and Utilization
Philippines, 2004-2006** (in metric tons)

ITEM	2004	2005	2006
Gross Supply	25,579,214	22,917,674	24,345,105
Production	25,579,214	22,917,674	24,345,105
Imports	-	-	-
Utilization			
Exports	8	3	50
Processing	25,323,422	22,688,497	24,101,654
Net Food			
Disposable	255,784	229,174	243,401
Per Capita Consumption			
kg./yr.	3.09	2.69	2.80
grams/day	8.47	7.37	7.67

**Table 45. Coconut: Supply and Utilization Accounts,
Philippines, 2004-2006** (in metric tons)

ITEM	2004	2005	2006
Gross Supply	14,366,184	14,824,585	14,957,910
Production	14,366,184	14,824,585	14,957,910
Imports	-	-	-
Utilization			
Exports	3,254	2,963	2,113
Net Disposable			
Supply	14,362,930	14,821,622	14,955,797
Seeds	143,662	148,246	149,579
Processing			
Food Use	5,746,474	5,929,834	5,983,164
Non-food Use	7,755,982	8,003,676	8,076,130
Net Food			
Disposable	716,812	739,866	746,924
Per Capita Consumption			
kg./yr.	8.67	8.68	8.59
grams/day	23.75	23.78	23.53

Table 46. Banana: Supply and Utilization Accounts, Philippines, 2004-2006 (in metric tons)

ITEM	2004	2005	2006
Gross Supply	5,631,250	6,298,225	6,794,564
Production	5,631,250	6,298,225	6,794,564
Imports	-	-	-
Utilization			
Exports	1,785,458	2,024,321	2,303,925
Seeds	-	-	-
Feeds & Waste	230,748	256,434	269,438
Processing	961,448	1,068,476	1,122,660
Net Food			
Disposable	2,653,596	2,948,994	3,098,541
Per Capita Consumption			
kg./yr.	32.10	34.60	35.63
grams/day	87.95	94.79	97.62

Table 47. Chicken (dressed): Supply and Utilization Accounts, Philippines, 2004-2006 (in metric tons)

ITEM	2004	2005	2006
Gross Supply	685,422	649,094	676,759
Production	664,876	622,884	643,126
Imports	20,546	26,210	33,633
Utilization			
Exports	1,237	3,599	419
Processing	-	-	-
Net Food			
Disposable	684,185	645,495	676,340
Per Capita Consumption			
kg./yr.	8.28	7.57	7.78
grams/day	22.68	20.74	21.32

**Table 48. Beef: Supply and Utilization Accounts,
Philippines, 2004-2006** (in metric tons)

ITEM	2004	2005	2006
Gross Supply	226,024	203,588	200,515
Production	179,229	172,759	166,816
Imports	46,795	30,829	33,699
Utilization			
Exports	-	-	-
Processing	17,923	17,276	16,682
Carcass			
Net Food			
Disposable	182,304	162,382	159,683
Per Capita Consumption			
kg./yr.	2.21	1.91	1.84
grams/day	6.05	5.23	5.04
Offals			
Net Food			
Disposable	25,797	23,930	24,150
Per Capita Consumption			
kg./yr.	0.31	0.28	0.28
grams/day	0.85	0.77	0.77

**Table 49. Pork: Supply and Utilization Accounts,
Philippines, 2004-2006** (in metric tons)

ITEM	2004	2005	2006
Gross Supply	1,399,689	1,446,356	1,502,433
Production	1,365,606	1,415,041	1,466,832
Imports	34,083	31,315	35,601
Utilization			
Exports	-	-	-
Processing	16,387	16,980	17,602
Carcass			
Net Food			
Disposable	1,130,341	1,167,017	1,206,988
Per Capita Consumption			
kg./yr.	13.67	13.69	13.88
grams/day	37.45	37.51	38.03
Offals			
Net Food			
Disposable	252,961	262,359	277,843
Per Capita Consumption			
kg./yr.	3.06	3.08	3.19
grams/day	8.38	8.44	8.74

Table 50. Tilapia: Supply and Utilization Accounts, Philippines, 2004-2006 (in metric tons)

ITEM	2004	2005	2006
Gross Supply	177,790	195,504	241,775
Production	177,790	195,504	241,775
Imports	-	-	-
Utilization			
Exports	-	-	-
Feeds & Waste	5,334	5,865	7,253
Net Food Disposable	172,456	189,639	234,522
Per Capita Consumption			
kg./yr.	2.09	2.22	2.70
grams/day	5.73	6.08	7.40

Table 51. Milkfish: Supply and Utilization Accounts, Philippines, 2004-2006 (in metric tons)

ITEM	2004	2005	2006
Gross Supply	274,176	289,802	318,727
Production	274,151	289,790	318,664
Imports	25	12	63
Utilization			
Exports	523	611	1,189
Feeds & Waste	8,225	8,694	9,560
Processing	87,728	92,733	101,972
Net Food Disposable	177,700	187,764	206,006
Per Capita Consumption			
kg./yr.	2.15	2.20	2.37
grams/day	5.89	6.03	6.49

**TASK FORCE ON
Updating and Revision of
SELECTED STATISTICS ON AGRICULTURE
2007**

Advisers

ROMEO S. RECIDE
Director
MAURA S. LIZARONDO
Assistant Director

Members

MINDA C. MANGABAT	- Chief, CSD
VIRGINIA A. VILORIA	- Chief, FSD
VICENTE C. AMORA	- Chief, LPSD
ERMINA V. TEPORA	- OIC, AMSAD
HAZEL ANN L. ALFORJA	- Secretariat
SUSAN B. GIPAL	- Circulation
QUIRINO G. SANTOS, JR.	- Graphic Artist
ROBERTO E. LANDICHO	- Duplicating Machine Operator

Pointpersons

JESUS A. GRONA	- LPSD
REINELDA P. ADRIANO	- FSD
THERESA C. ARRUEJO	- CSD
MA. CAROL G. DURAN	- AASID
MAYDALYN B. GAMENG	- AMSAD
MARICEL P. SOLATRE	- AMSAD

ROBERTO M. DALAG
Chair

EPIFANIA C. GONZALES
Co-Chair

BUREAU OF AGRICULTURAL STATISTICS

Ben-Lor Building, 1184 Quezon Avenue, Quezon City

Tel. No.: 3721-2050; 371-2074

Fax. No.: 37102086

<http://www.bas.gov.ph>