



REPUBLIC OF THE PHILIPPINES  
**PHILIPPINE STATISTICS AUTHORITY**

# Value of Production in Philippine Agriculture and Fisheries

Second Quarter 2021



## **TERMS OF USE**

***Value of Production in Philippine Agriculture and Fisheries*** is a publication of the Philippine Statistics Authority (PSA). The PSA reserves exclusive right to reproduce this publication in whatever form. Should any portion of this publication be included in a report/article, the title of the publication and the PSA should be cited as the source of data. The PSA will not be responsible for any information derived from the processing of data contained in this publication.

AUGUST 2021

## FOREWORD

The Philippine Statistics Authority (PSA) releases the Second Quarter 2021 Value of Production in Philippine Agriculture and Fisheries.

The report covers all agricultural commodities, highlighting 22 commodities for crops, nine commodities for livestock and poultry, and 20 commodities for fisheries. It presents the value of agricultural production at constant 2018 prices and at current prices.

PSA welcomes comments and suggestions from its data users, clients, and stakeholders for the improvement of this report.

**DENNIS S. MAPA, Ph.D.**

Undersecretary

National Statistician and Civil Registrar General

Quezon City, Philippines

August 2021

## TABLE OF CONTENTS

Foreword	i
Table of Contents	ii
Press Release	iv
Infographics	v
Highlights	1
List of Tables	
Table 1a. Value of Production in Philippine Agriculture and Fisheries at Constant 2018 Prices First Quarter 2019 to Second Quarter 2021	3
Table 1b. Value of Crop Production at Constant 2018 Prices First Quarter 2019 to Second Quarter 2021	4
Table 1c. Value of Livestock and Poultry Production at Constant 2018 Prices First Quarter 2019 to Second Quarter 2021	5
Table 1d. Value of Fisheries Production at Constant 2018 Prices First Quarter 2019 to Second Quarter 2021	6
Table 2a. Growth Rates of Value of Production in Philippine Agriculture and Fisheries at Constant 2018 Prices First Quarter 2019 to Second Quarter 2021	7
Table 2b. Growth Rates of Value of Crop Production at Constant 2018 Prices First Quarter 2019 to Second Quarter 2021	8
Table 2c. Growth Rates of Value of Livestock and Poultry Production at Constant 2018 Prices First Quarter 2019 to Second Quarter 2021	9
Table 2d. Growth Rates of Value of Fisheries Production at Constant 2018 Prices First Quarter 2019 to Second Quarter 2021	10
Table 3a. Percent Distribution of Value of Production in Philippine Agriculture and Fisheries at Constant 2018 Prices First Quarter 2019 to Second Quarter 2021	11
Table 3b. Percent Distribution of Value of Crop Production at Constant 2018 Prices First Quarter 2019 to Second Quarter 2021	12
Table 3c. Percent Distribution of Value of Livestock and Poultry Production at Constant 2018 Prices First Quarter 2019 to Second Quarter 2021	13
Table 3d. Percent Distribution of Value of Fisheries Production at Constant 2018 Prices First Quarter 2019 to Second Quarter 2021	14
Table 4a. Value of Production in Philippine Agriculture and Fisheries at Current Prices First Quarter 2019 to Second Quarter 2021	15
Table 4b. Value of Crop Production at Current Prices First Quarter 2019 to Second Quarter 2021	16
Table 4c. Value of Livestock and Poultry Production at Current Prices First Quarter 2019 to Second Quarter 2021	17
Table 4d. Value of Fisheries Production at Current Prices First Quarter 2019 to Second Quarter 2021	18

---

## TABLE OF CONTENTS

Table 5a.	Growth Rates of Value of Production in Philippine Agriculture and Fisheries at Current Prices First Quarter 2019 to Second Quarter 2021	19
Table 5b.	Growth Rates of Value of Crop Production at Current Prices First Quarter 2019 to Second Quarter 2021	20
Table 5c.	Growth Rates of Value of Livestock and Poultry Production at Current Prices First Quarter 2019 to Second Quarter 2021	21
Table 5d.	Growth Rates of Value of Fisheries Production at Current Prices First Quarter 2019 to Second Quarter 2021	22
Table 6a.	Percent Distribution of Value of Production in Philippine Agriculture and Fisheries at Current Prices First Quarter 2019 to Second Quarter 2021	23
Table 6b.	Percent Distribution of Value of Crop Production at Current Prices First Quarter 2019 to Second Quarter 2021	24
Table 6c.	Percent Distribution of Value of Livestock and Poultry Production at Current Prices First Quarter 2019 to Second Quarter 2021	25
Table 6d.	Percent Distribution of Value of Fisheries Production at Current Prices First Quarter 2019 to Second Quarter 2021	26
Table 7a.	Volume of Crop Production First Quarter 2019 to Second Quarter 2021	27
Table 7b.	Volume of Livestock and Poultry Production First Quarter 2019 to Second Quarter 2021	28
Table 7c.	Volume of Fisheries Production First Quarter 2019 to Second Quarter 2021	29
Table 8a.	Growth Rates of Volume of Crop Production First Quarter 2019 to Second Quarter 2021	30
Table 8b.	Growth Rates of Volume of Livestock and Poultry Production First Quarter 2019 to Second Quarter 2021	31
Table 8c.	Growth Rates of Volume of Fisheries Production First Quarter 2019 to Second Quarter 2021	32
Table 9a.	Average Farmgate Prices of Crops First Quarter 2019 to Second Quarter 2021	33
Table 9b.	Average Farmgate Prices of Livestock and Poultry First Quarter 2019 to Second Quarter 2021	34
Table 9c.	Average Farmgate Prices of Fisheries First Quarter 2019 to Second Quarter 2021	35
Table 10a.	Growth Rates of Average Farmgate Prices of Crops First Quarter 2019 to Second Quarter 2021	36
Table 10b.	Growth Rates of Average Farmgate Prices of Livestock and Poultry First Quarter 2019 to Second Quarter 2021	37
Table 10c.	Growth Rates of Average Farmgate Prices of Fisheries First Quarter 2019 to Second Quarter 2021	38

---



REPUBLIC OF THE PHILIPPINES  
 PHILIPPINE STATISTICS AUTHORITY

# PRESS RELEASE

## Agricultural value of production declined by -1.5 percent in the second quarter of 2021

Date of Release: 09 August 2021, 9:00 AM  
 Reference No. 2021-337

In the second quarter of 2021, the value of agricultural production at constant 2018 prices decreased by -1.5 percent. This was attributed to the decline in livestock and fisheries production. Meanwhile, production increments were noted for crops and poultry. (Table 2a and Figure 1)

Crops, which accounted for 56.2 percent of the total agricultural production, grew by 3.1 percent. Production of palay and corn went up by 1.2 percent and 6.3 percent, respectively. (Tables 2a, 2b, and 3a)

Livestock production, which dropped by -19.3 percent, contributed 14.2 percent to the total agricultural production. Hog production decreased by -26.2 percent. (Tables 2a, 2c, and 3a)

Poultry production, which shared 13.5 percent in the total agricultural production, recorded a 2.5 percent increase in the second quarter of 2021, from -4.7 percent decline in the same period last year. Duck, chicken eggs, and duck eggs posted production increments. (Tables 2a, 2c, and 3a)

Fisheries, which contributed 16.1 percent to the total agricultural production, went down by -1.1 percent. Double-digit declines in production were noted for yellowfin tuna (*tambakol/bariles*) at -34.9 percent, roundscad (*galunggong*) at -18.3 percent, threadfin bream (*bisugo*) at -17.1 percent, frigate tuna (*tulingan*) at -16.9 percent, fimbriated sardines (*tunsoy*) at -13.7 percent, skipjack (*gulyasan*) at -12.0 percent, and *Bali sardinella* (*tamban*) at -10.0 percent. (Tables 2a, 2d, and 3a)

At current prices, the value of agricultural production amounted to PhP 503.3 billion in the second quarter of 2021. This was 7.2 percent higher than the level recorded in the same period of the previous year. (Tables 4a and 5a)

Mapa Claire Dennis Sioson  
 2021.08.08 11:42:16  
 +08'00'

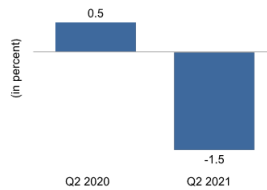
**DENNIS S. MAPA, Ph.D.**  
 Undersecretary  
 National Statistician and Civil Registrar General

VR/MSN

**Attachment:**

1. Value of Production in Philippine Agriculture and Fisheries, Second Quarter 2021 Full Report

Figure 1. Value of Production in Agriculture at Constant 2018 Prices  
 Growth Rates  
 Q2 2020 and Q2 2021



Source: Philippine Statistics Authority



PSA Complex, East Avenue, Diliman, Quezon City, Philippines 1101  
 Telephone: (632) 8938-5267  
[www.psa.gov.ph](http://www.psa.gov.ph)



# VALUE OF PRODUCTION IN PHILIPPINE AGRICULTURE AND FISHERIES

## SECOND QUARTER 2021

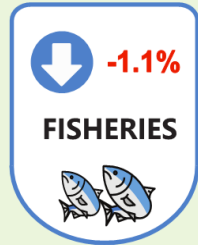
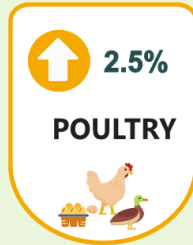
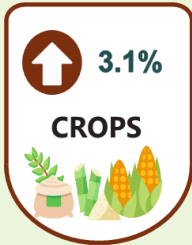


As of August 2021  
MAS 05-IG-09082021

AT CONSTANT 2018 PRICES  
GROWTH RATES



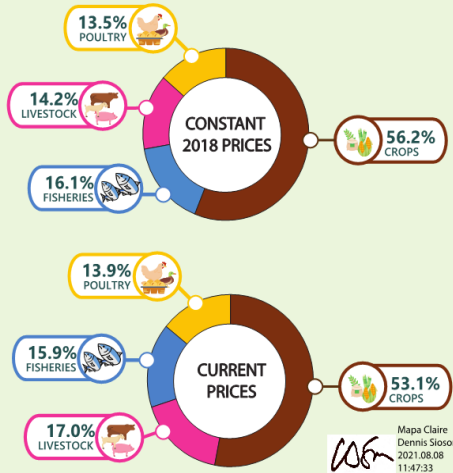
### AGRICULTURE



AT CURRENT PRICES  
LEVELS AND GROWTH RATES

AGRICULTURE	
PhP <b>503.3</b> BILLION	<b>7.2%</b>
CROPS	
PhP <b>267.2</b> BILLION	<b>1.9%</b>
LIVESTOCK	
PhP <b>85.8</b> BILLION	<b>18.6%</b>
POULTRY	
PhP <b>70.1</b> BILLION	<b>13.9%</b>
FISHERIES	
PhP <b>80.2</b> BILLION	<b>9.5%</b>

PERCENT DISTRIBUTION  
OF VALUE OF PRODUCTION



For Technical Inquiries  
aad.staff@psa.gov.ph

Visit us on  
www.psa.gov.ph

Like us on Facebook  
PhilippineStatisticsAuthority

Follow us on Twitter  
@PSAgovph



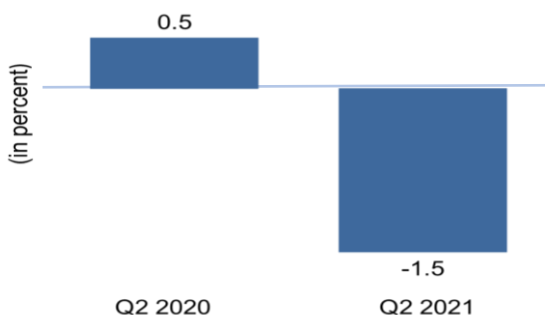
# VALUE OF PRODUCTION IN PHILIPPINE AGRICULTURE AND FISHERIES





**VALUE OF PRODUCTION IN  
PHILIPPINE AGRICULTURE AND FISHERIES  
SECOND QUARTER 2021**

Figure 1. Value of Production in Agriculture at Constant 2018 Prices  
Growth Rates  
Q2 2020 and Q2 2021



Source: Philippine Statistics Authority

Agricultural production<sup>1</sup> went down by -1.5 percent in the second quarter of 2021. Decreases in the production levels were noted for livestock and fisheries. Meanwhile, production of crops and poultry posted increases during the period. At current prices, the value of agricultural production at PhP 503.3 billion was 7.2 percent higher from the previous year's level. *From January to June 2021, value of agricultural production at constant 2018 prices contracted by -2.5 percent.* (Tables 2a, 4a and 5a, and Figure 1)

In the second quarter of 2021, crop production went up by 3.1 percent. It shared 56.2 percent in the total agricultural production. Uptrends in production were recorded for palay at 1.2 percent and corn at 6.3 percent. Double-digit increments were noted for sugarcane at 34.8 percent, potato at 24.8 percent, onion at 22.0 percent, and cabbage at 13.1 percent. Likewise, increases in production levels were exhibited for cacao at 9.9 percent, rubber at 5.9 percent, and pineapple at 4.6 percent. Moreover, improvements in production were registered for tomato at 3.0 percent, ampalaya at 2.7 percent, eggplant at 2.1 percent, banana at 1.3 percent, coconut at 0.8 percent, and sweet potato at 0.1 percent.

On the other hand, reductions in production were recorded for mungo at -8.5 percent, calamansi at -7.8 percent, cassava at -4.2 percent, tobacco at -2.1 percent, abaca at -1.2 percent, coffee at -0.3 percent, and

<sup>1</sup>All value of production growth rates are at constant 2018 prices.

---

mango at -0.2 percent. Collectively, production of “other crops” went up by 3.1 percent. At current prices, crop production was valued at PhP 267.2 billion, an increase of 1.9 percent this quarter. *For the first half of 2021, production of crops was higher by 3.2 percent.* (Tables 2b, 3b, 4b, and 5b)

Livestock production, which contributed 14.2 percent in the total agricultural production, dropped by -19.3 percent in the second quarter of 2021. Declines in production were registered for hog at -26.2 percent and for dairy at -6.6 percent. Meanwhile, two-digit increases in the production level were posted for cattle at 32.6 percent, carabao at 26.2 percent, and goat at 23.4 percent. At current prices, the value of livestock production, which amounted to PhP 85.8 billion, was 18.6 percent higher than the previous year’s level. *From January to June 2021, livestock production registered a -21.4 percent decrease.* (Tables 2c, 3c, 4c, and 5c)

Poultry production increased by 2.5 percent during the period. It accounted for 13.5 percent of the total agricultural production. Production growths were observed for duck at 38.4 percent, chicken eggs at 13.1 percent, and duck eggs at 1.8 percent. On the other hand, contraction in production was noted for chicken at -1.6 percent. At current prices, the value of poultry production amounted to PhP 70.1 billion, indicated a 13.9 percent expansion from the previous year’s same period record. *In the first six months of 2021, poultry exhibited production decline at -2.6 percent.* (Tables 2c, 3c, 4c, and 5c)

Fisheries production, which shared 16.1 percent in the total agricultural production, dropped by -1.1 percent this quarter. Double-digit contractions were noted for yellowfin tuna (tambakol/bariles) at -34.9 percent, roundscad (galunggong) at -18.3 percent, threadfin bream (bisugo) at -17.1 percent, frigate tuna (tulingan) at -16.9 percent, fimbriated sardines (tunsoy) at -13.7 percent, skipjack (gulyasan) at -12.0 percent, and *Bali sardinella* (tamban) at -10.0 percent. Lower production ranging from -2.2 percent to -0.5 percent were registered for Indian mackerel (alumahan), tiger prawn (sugpo), and seaweed.

Expansion in production were recorded for the following fish species: blue crab (alimasag) at 24.2 percent, tilapia at 14.3 percent, mudcrab (alimango) at 13.4 percent, milkfish (bangus) at 12.5 percent, grouper (lapu-lapu) at 8.7 percent, slipmouth (sapsap) at 5.1 percent, squid (pusit) at 4.0 percent, and bigeye tuna (tambakol/bariles) at 3.0 percent. Cavalla (talakitok) and big-eyed scad (matangbaka) increased by 2.8 percent each in production during the period. For “other fisheries”, production was down by -0.6 percent. At current prices, the value of fisheries production amounted to PhP 80.2 billion or 9.5 percent higher compared to the previous year’s same period record. *From January to June 2021, fisheries production decreased by -0.5 percent.* (Tables 2d, 3d, 4d, and 5d)

Table 1a. Value of Production in Philippine Agriculture and Fisheries at Constant 2018 Prices  
 First Quarter 2019 to Second Quarter 2021  
 (in Million PhP)

Subsector	2019				2020				2021		January to June		
	Q1	Q2	Q3	Q4	Q1	Q2	Q3	Q4	Q1	Q2	2019	2020	2021
Crops	245,801	226,028	210,053	286,230	239,871	237,367	220,011	285,303	247,736	244,659	471,828	477,238	492,395
Livestock	78,208	83,588	79,228	87,083	78,082	76,486	73,229	75,880	59,786	61,743	161,796	154,567	121,530
Poultry	60,474	60,403	60,813	63,591	60,574	57,535	58,523	60,078	56,053	58,987	120,877	118,109	115,040
Fisheries	59,120	70,292	64,739	75,263	57,329	70,982	65,964	71,549	57,463	70,216	129,412	128,311	127,679
AGRICULTURE	443,602	440,311	414,834	512,168	435,856	442,369	417,727	492,810	421,038	435,607	883,913	878,225	856,644

Note: Details may not add up to totals due to rounding

Source: Philippine Statistics Authority

Table 1b. Value of Crop Production at Constant 2018 Prices  
 First Quarter 2019 to Second Quarter 2021  
 (in Million PhP)

Subsector/ Commodity	2019				2020				2021		January to June		
	Q1	Q2	Q3	Q4	Q1	Q2	Q3	Q4	Q1	Q2	2019	2020	2021
Crops	245,801	226,028	210,053	286,230	239,871	237,367	220,011	285,303	247,736	244,659	471,828	477,238	492,395
Palay	87,301	77,978	66,879	147,428	84,230	83,497	77,068	145,418	91,453	84,463	165,279	167,727	175,916
Corn	33,589	16,799	38,821	22,975	31,800	19,384	40,165	22,895	33,866	20,596	50,388	51,183	54,461
Banana	35,674	38,253	39,901	41,068	34,807	37,740	39,398	41,245	35,162	38,218	73,927	72,547	73,380
Coconut	24,660	21,992	23,997	21,327	23,609	21,592	23,658	21,247	23,419	21,775	46,652	45,201	45,194
Mango	5,574	19,014	2,308	969	5,525	19,054	2,356	960	5,749	19,012	24,588	24,579	24,761
Sugarcane	16,655	4,511	703	11,324	17,318	8,860	870	12,462	16,538	11,944	21,166	26,178	28,482
Pineapple	6,501	9,551	8,417	6,235	6,555	9,687	7,694	6,241	6,931	10,130	16,052	16,242	17,061
Cassava	2,558	3,802	5,099	5,923	2,564	3,657	5,090	5,965	2,376	3,504	6,360	6,221	5,880
Rubber	1,175	3,029	2,588	3,234	1,175	2,825	2,485	3,308	1,220	2,991	4,203	4,000	4,211
Sweet Potato	1,852	2,466	2,400	2,248	1,922	2,587	2,465	2,348	1,904	2,591	4,319	4,510	4,495
Onion	6,135	2,135	1	361	6,585	1,990	1	376	5,680	2,427	8,271	8,575	8,107
Eggplant	2,562	2,942	1,308	746	2,399	2,889	1,352	702	2,422	2,951	5,504	5,289	5,373
Coffee	976	361	299	1,620	979	350	297	1,660	1,101	349	1,337	1,329	1,449
Tobacco	1,000	2,596	316	129	996	2,682	221	270	934	2,626	3,597	3,678	3,560
Abaca	1,064	1,269	1,408	1,287	1,004	1,228	1,410	1,303	857	1,213	2,333	2,232	2,070
Tomato	1,367	1,376	672	478	1,351	1,421	663	442	1,375	1,463	2,743	2,772	2,838
Potato	766	300	465	2,672	747	284	500	2,573	549	354	1,065	1,031	904
Ampalaya	739	1,020	878	737	736	1,025	870	683	751	1,053	1,759	1,762	1,804
Cabbage	585	487	619	1,420	612	484	588	1,452	553	547	1,072	1,095	1,099
Calamansi	475	475	1,100	604	423	382	914	584	417	353	950	806	769
Mongo	470	1,308	73	173	498	1,321	75	174	529	1,209	1,778	1,819	1,738
Cacao	139	158	187	212	162	167	209	227	181	183	297	329	364
Other Crops	13,983	14,207	11,615	13,059	13,874	14,260	11,661	12,767	13,768	14,709	28,190	28,135	28,477

Note: Details may not add up to totals due to rounding

Source: Philippine Statistics Authority

Table 1c. Value of Livestock and Poultry Production at Constant 2018 Prices  
 First Quarter 2019 to Second Quarter 2021  
 (in Million PhP)

Subsector/ Commodity	2019				2020				2021		January to June		
	Q1	Q2	Q3	Q4	Q1	Q2	Q3	Q4	Q1	Q2	2019	2020	2021
Livestock	78,208	83,588	79,228	87,083	78,082	76,486	73,229	75,880	59,786	61,743	161,796	154,567	121,530
Hog	66,125	70,408	66,851	71,419	66,271	66,756	61,675	61,563	49,154	49,284	136,533	133,027	98,438
Cattle	6,502	7,016	6,524	8,312	6,429	4,950	5,874	7,679	5,647	6,563	13,518	11,379	12,210
Carabao	2,829	3,506	2,898	4,180	2,774	2,575	2,675	3,458	2,541	3,251	6,335	5,349	5,792
Goat	2,518	2,415	2,713	2,927	2,362	1,950	2,723	2,905	2,192	2,407	4,933	4,312	4,599
Dairy	234	243	243	245	245	255	282	276	252	238	477	500	490
Poultry	60,474	60,403	60,813	63,591	60,574	57,535	58,523	60,078	56,053	58,987	120,877	118,109	115,040
Chicken	43,606	44,864	44,571	46,170	43,099	41,374	41,372	42,507	38,259	40,726	88,469	84,472	78,985
Duck	931	548	776	797	874	505	794	826	773	699	1,479	1,379	1,471
Chicken Eggs	14,859	13,676	14,411	15,342	15,503	14,353	15,278	15,405	15,909	16,237	28,535	29,857	32,146
Duck Eggs	1,078	1,315	1,055	1,283	1,098	1,303	1,079	1,339	1,112	1,326	2,394	2,401	2,438

Note: Details may not add up to totals due to rounding  
 Source: Philippine Statistics Authority

Table 1d. Value of Fisheries Production at Constant 2018 Prices  
 First Quarter 2019 to Second Quarter 2021  
 (in Million PhP)

Subsector/ Commodity	2019				2020				2021		January to June		
	Q1	Q2	Q3	Q4	Q1	Q2	Q3	Q4	Q1	Q2	2019	2020	2021
Fisheries	59,120	70,292	64,739	75,263	57,329	70,982	65,964	71,549	57,463	70,216	129,412	128,311	127,679
Milkfish (Bangus)	6,508	10,480	12,001	13,812	6,872	10,712	11,272	14,527	6,956	12,056	16,988	17,583	19,012
Tilapia	6,686	6,211	4,352	7,025	6,657	5,956	4,338	6,022	7,189	6,807	12,898	12,613	13,996
Tiger Prawn (Sugpo)	4,183	6,161	3,925	8,109	4,111	6,300	3,480	6,780	4,129	6,219	10,344	10,411	10,348
Skipjack (Gulyasan)	4,801	3,710	4,513	4,827	3,764	4,444	4,529	4,612	4,647	3,913	8,511	8,208	8,560
Roundscad (Galunggong)	3,468	3,950	3,000	2,294	3,205	4,699	3,385	2,268	2,706	3,839	7,418	7,904	6,545
Seaweed	2,245	2,062	2,198	4,606	2,231	2,084	2,173	4,355	2,166	2,074	4,307	4,315	4,240
Yellowfin Tuna (Tambakol/Bariles)	2,557	3,200	2,065	2,790	2,078	3,322	2,400	2,385	1,712	2,162	5,757	5,400	3,874
Mudcrab (Alimango)	2,928	1,866	2,036	2,679	3,212	1,741	1,839	2,735	3,860	1,974	4,794	4,953	5,834
Frigate Tuna (Tulingan)	1,940	2,777	2,082	1,903	1,864	2,525	2,366	1,900	1,671	2,099	4,717	4,389	3,770
Big-eyed Scad (Matangbaka)	1,820	2,339	2,169	2,224	1,894	2,030	2,148	2,145	1,980	2,087	4,159	3,924	4,068
<i>Bali Sardinella</i> (Tamban)	1,131	2,300	2,027	1,357	1,563	3,355	2,665	1,773	1,733	3,021	3,431	4,918	4,754
Squid (Pusit)	1,184	1,721	1,280	1,400	1,205	1,461	1,280	1,342	1,165	1,518	2,905	2,666	2,683
Blue Crab (Alimasag)	832	1,359	1,496	1,181	1,011	1,252	1,880	944	999	1,555	2,191	2,263	2,554
Bigeye Tuna (Tambakol/ Bariles)	627	747	949	798	647	731	1,311	815	649	753	1,374	1,378	1,402
Grouper (Lapu-lapu)	684	780	3,075	770	665	762	3,152	764	578	828	1,464	1,426	1,407
Indian Mackerel (Alumahan)	1,095	1,433	1,160	1,268	995	1,094	1,119	1,225	978	1,070	2,528	2,089	2,048
Threadfin Bream (Bisugo)	1,165	1,144	1,348	1,372	1,226	1,078	1,339	1,141	1,001	893	2,309	2,304	1,895
Slipmouth (Sapsap)	664	695	730	814	517	574	699	684	597	603	1,360	1,091	1,200
Cavalla (Talakitok)	767	769	709	747	722	830	842	808	789	854	1,536	1,553	1,643
Fimbriated Sardines (Tunsoy)	706	647	657	440	522	350	514	277	322	302	1,353	872	624
Other Fisheries	13,130	15,942	12,969	14,848	12,369	15,683	13,233	14,048	11,635	15,588	29,072	28,051	27,224

Note: Details may not add up to totals due to rounding

Source: Philippine Statistics Authority

Table 2a. Growth Rates of Value of Production in Philippine Agriculture and Fisheries  
at Constant 2018 Prices, First Quarter 2019 to Second Quarter 2021  
(in percent)

Subsector	2019-2020				2020-2021		January to June	
	Q1	Q2	Q3	Q4	Q1	Q2	2019-2020	2020-2021
Crops	-2.4	5.0	4.7	-0.3	3.3	3.1	1.1	3.2
Livestock	-0.2	-8.5	-7.6	-12.9	-23.4	-19.3	-4.5	-21.4
Poultry	0.2	-4.7	-3.8	-5.5	-7.5	2.5	-2.3	-2.6
Fisheries	-3.0	1.0	1.9	-4.9	0.2	-1.1	-0.9	-0.5
AGRICULTURE	-1.7	0.5	0.7	-3.8	-3.4	-1.5	-0.6	-2.5

Source: Philippine Statistics Authority

Table 2b. Growth Rates of Value of Crop Production at Constant 2018 Prices  
 First Quarter 2019 to Second Quarter 2021  
 (in percent)

Subsector/ Commodity	2019-2020				2020-2021		January to June	
	Q1	Q2	Q3	Q4	Q1	Q2	2019-2020	2020-2021
Crops	-2.4	5.0	4.7	-0.3	3.3	3.1	1.1	3.2
Palay	-3.5	7.1	15.2	-1.4	8.6	1.2	1.5	4.9
Corn	-5.3	15.4	3.5	-0.3	6.5	6.3	1.6	6.4
Banana	-2.4	-1.3	-1.3	0.4	1.0	1.3	-1.9	1.1
Coconut	-4.3	-1.8	-1.4	-0.4	-0.8	0.8	-3.1	-0.02
Mango	-0.9	0.2	2.1	-0.9	4.1	-0.2	-0.04	0.7
Sugarcane	4.0	96.4	23.8	10.0	-4.5	34.8	23.7	8.8
Pineapple	0.8	1.4	-8.6	0.1	5.7	4.6	1.2	5.0
Cassava	0.2	-3.8	-0.2	0.7	-7.3	-4.2	-2.2	-5.5
Rubber	0.04	-6.7	-4.0	2.3	3.8	5.9	-4.8	5.3
Sweet Potato	3.8	4.9	2.7	4.5	-1.0	0.1	4.4	-0.3
Onion	7.3	-6.8	-1.2	4.0	-13.7	22.0	3.7	-5.5
Eggplant	-6.4	-1.8	3.4	-5.9	1.0	2.1	-3.9	1.6
Coffee	0.3	-3.1	-0.7	2.5	12.4	-0.3	-0.6	9.0
Tobacco	-0.5	3.3	-30.0	109.3	-6.2	-2.1	2.3	-3.2
Abaca	-5.6	-3.3	0.2	1.2	-14.7	-1.2	-4.3	-7.3
Tomato	-1.1	3.2	-1.4	-7.6	1.8	3.0	1.0	2.4
Potato	-2.5	-5.3	7.5	-3.7	-26.4	24.8	-3.3	-12.3
Ampalaya	-0.4	0.5	-0.8	-7.3	2.0	2.7	0.1	2.4
Cabbage	4.5	-0.6	-5.0	2.2	-9.6	13.1	2.2	0.4
Calamansi	-10.9	-19.5	-16.9	-3.2	-1.6	-7.8	-15.2	-4.5
Mango	6.0	1.0	3.0	0.4	6.2	-8.5	2.3	-4.5
Cacao	16.7	5.6	12.0	7.1	11.8	9.9	10.8	10.9
Other Crops	-0.8	0.4	0.4	-2.2	-0.8	3.1	-0.2	1.2

Source: Philippine Statistics Authority



Table 2c. Growth Rates of Value of Livestock and Poultry Production at Constant 2018 Prices  
 First Quarter 2019 to Second Quarter 2021  
 (in percent)

Subsector/ Commodity	2019-2020				2020-2021		January to June	
	Q1	Q2	Q3	Q4	Q1	Q2	2019-2020	2020-2021
Livestock	-0.2	-8.5	-7.6	-12.9	-23.4	-19.3	-4.5	-21.4
Hog	0.2	-5.2	-7.7	-13.8	-25.8	-26.2	-2.6	-26.0
Cattle	-1.1	-29.5	-10.0	-7.6	-12.2	32.6	-15.8	7.3
Carabao	-2.0	-26.5	-7.7	-17.3	-8.4	26.2	-15.6	8.3
Goat	-6.2	-19.3	0.4	-0.8	-7.2	23.4	-12.6	6.7
Dairy	4.9	5.0	16.0	12.7	2.8	-6.6	4.9	-2.0
Poultry	0.2	-4.7	-3.8	-5.5	-7.5	2.5	-2.3	-2.6
Chicken	-1.2	-7.8	-7.2	-7.9	-11.2	-1.6	-4.5	-6.5
Duck	-6.2	-7.8	2.3	3.7	-11.6	38.4	-6.8	6.7
Chicken Eggs	4.3	4.9	6.0	0.4	2.6	13.1	4.6	7.7
Duck Eggs	1.8	-1.0	2.3	4.4	1.3	1.8	0.3	1.5

Source: Philippine Statistics Authority

Table 2d. Growth Rates of Value of Fisheries Production at Constant 2018 Prices  
First Quarter 2019 to Second Quarter 2021  
(in percent)

Subsector/ Commodity	2019-2020				2020-2021		January to June	
	Q1	Q2	Q3	Q4	Q1	Q2	2019-2020	2020-2021
Fisheries	-3.0	1.0	1.9	-4.9	0.2	-1.1	-0.9	-0.5
Milkfish (Bangus)	5.6	2.2	-6.1	5.2	1.2	12.5	3.5	8.1
Tilapia	-0.4	-4.1	-0.3	-14.3	8.0	14.3	-2.2	11.0
Tiger Prawn (Sugpo)	-1.7	2.3	-11.3	-16.4	0.4	-1.3	0.7	-0.6
Skipjack (Gulyasan)	-21.6	19.8	0.4	-4.4	23.5	-12.0	-3.6	4.3
Roundscad (Galunggong)	-7.6	18.9	12.8	-1.1	-15.6	-18.3	6.5	-17.2
Seaweed	-0.6	1.1	-1.1	-5.5	-2.9	-0.5	0.2	-1.8
Yellowfin Tuna (Tambakol/Bariles)	-18.7	3.8	16.3	-14.5	-17.6	-34.9	-6.2	-28.3
Mudcrab (Alimango)	9.7	-6.7	-9.7	2.1	20.2	13.4	3.3	17.8
Frigate Tuna (Tulingan)	-3.9	-9.1	13.6	-0.2	-10.3	-16.9	-7.0	-14.1
Big-eyed Scad (Matangbaka)	4.1	-13.2	-0.9	-3.5	4.6	2.8	-5.6	3.6
<i>Bali Sardinella</i> (Tamban)	38.2	45.9	31.4	30.6	10.9	-10.0	43.4	-3.3
Squid (Pusit)	1.8	-15.1	0.05	-4.2	-3.4	4.0	-8.2	0.6
Blue Crab (Alimasag)	21.5	-7.9	25.6	-20.1	-1.2	24.2	3.3	12.9
Bigeye Tuna (Tambakol/ Bariles)	3.2	-2.1	38.1	2.1	0.3	3.0	0.3	1.7
Grouper (Lapu-lapu)	-2.8	-2.4	2.5	-0.8	-12.9	8.7	-2.6	-1.4
Indian Mackerel (Alumahan)	-9.2	-23.6	-3.5	-3.4	-1.6	-2.2	-17.4	-1.9
Threadfin Bream (Bisugo)	5.2	-5.8	-0.7	-16.8	-18.3	-17.1	-0.2	-17.8
Slipmouth (Sapsap)	-22.2	-17.4	-4.3	-16.0	15.5	5.1	-19.8	10.1
Cavalla (Talakitok)	-5.8	8.0	18.8	8.1	9.2	2.8	1.1	5.8
Fimbriated Sardines (Tunsoy)	-26.0	-45.9	-21.7	-37.0	-38.3	-13.7	-35.6	-28.4
Other Fisheries	-5.8	-1.6	2.0	-5.4	-5.9	-0.6	-3.5	-3.0

Source: Philippine Statistics Authority

Table 3a. Percent Distribution of Value of Production in Philippine Agriculture and Fisheries  
at Constant 2018 Prices, First Quarter 2019 to Second Quarter 2021  
(in percent)

Subsector	2019				2020				2021		January to June		
	Q1	Q2	Q3	Q4	Q1	Q2	Q3	Q4	Q1	Q2	2019	2020	2021
Crops	55.4	51.3	50.6	55.9	55.0	53.7	52.7	57.9	58.8	56.2	53.4	54.3	57.5
Livestock	17.6	19.0	19.1	17.0	17.9	17.3	17.5	15.4	14.2	14.2	18.3	17.6	14.2
Poultry	13.6	13.7	14.7	12.4	13.9	13.0	14.0	12.2	13.3	13.5	13.7	13.4	13.4
Fisheries	13.3	16.0	15.6	14.7	13.2	16.0	15.8	14.5	13.6	16.1	14.6	14.6	14.9
AGRICULTURE	100.0	100.0	100.0	100.0	100.0	100.0	100.0	100.0	100.0	100.0	100.0	100.0	100.0

Note: Details may not add up to totals due to rounding

Source: Philippine Statistics Authority

Table 3b. Percent Distribution of Value of Crop Production at Constant 2018 Prices  
 First Quarter 2019 to Second Quarter 2021  
 (in percent)

Subsector/ Commodity	2019				2020				2021		January to June		
	Q1	Q2	Q3	Q4	Q1	Q2	Q3	Q4	Q1	Q2	2019	2020	2021
Crops	55.4	51.3	50.6	55.9	55.0	53.7	52.7	57.9	58.8	56.2	53.4	54.3	57.5
Palay	19.7	17.7	16.1	28.8	19.3	18.9	18.4	29.5	21.7	19.4	18.7	19.1	20.5
Corn	7.6	3.8	9.4	4.5	7.3	4.4	9.6	4.6	8.0	4.7	5.7	5.8	6.4
Banana	8.0	8.7	9.6	8.0	8.0	8.5	9.4	8.4	8.4	8.8	8.4	8.3	8.6
Coconut	5.6	5.0	5.8	4.2	5.4	4.9	5.7	4.3	5.6	5.0	5.3	5.1	5.3
Mango	1.3	4.3	0.6	0.2	1.3	4.3	0.6	0.2	1.4	4.4	2.8	2.8	2.9
Sugarcane	3.8	1.0	0.2	2.2	4.0	2.0	0.2	2.5	3.9	2.7	2.4	3.0	3.3
Pineapple	1.5	2.2	2.0	1.2	1.5	2.2	1.8	1.3	1.6	2.3	1.8	1.8	2.0
Cassava	0.6	0.9	1.2	1.2	0.6	0.8	1.2	1.2	0.6	0.8	0.7	0.7	0.7
Rubber	0.3	0.7	0.6	0.6	0.3	0.6	0.6	0.7	0.3	0.7	0.5	0.5	0.5
Sweet Potato	0.4	0.6	0.6	0.4	0.4	0.6	0.6	0.5	0.5	0.6	0.5	0.5	0.5
Onion	1.4	0.5	0.0003	0.1	1.5	0.4	0.0003	0.1	1.3	0.6	0.9	1.0	0.9
Eggplant	0.6	0.7	0.3	0.1	0.6	0.7	0.3	0.1	0.6	0.7	0.6	0.6	0.6
Coffee	0.2	0.1	0.1	0.3	0.2	0.1	0.1	0.3	0.3	0.1	0.2	0.2	0.2
Tobacco	0.2	0.6	0.1	0.03	0.2	0.6	0.1	0.1	0.2	0.6	0.4	0.4	0.4
Abaca	0.2	0.3	0.3	0.3	0.2	0.3	0.3	0.3	0.2	0.3	0.3	0.3	0.2
Tomato	0.3	0.3	0.2	0.1	0.3	0.3	0.2	0.1	0.3	0.3	0.3	0.3	0.3
Potato	0.2	0.1	0.1	0.5	0.2	0.1	0.1	0.5	0.1	0.1	0.1	0.1	0.1
Ampalaya	0.2	0.2	0.2	0.1	0.2	0.2	0.2	0.1	0.2	0.2	0.2	0.2	0.2
Cabbage	0.1	0.1	0.1	0.3	0.1	0.1	0.1	0.3	0.1	0.1	0.1	0.1	0.1
Calamansi	0.1	0.1	0.3	0.1	0.1	0.1	0.2	0.1	0.1	0.1	0.1	0.1	0.1
Mango	0.1	0.3	0.02	0.03	0.1	0.3	0.02	0.04	0.1	0.3	0.2	0.2	0.2
Cacao	0.03	0.04	0.04	0.04	0.04	0.04	0.1	0.05	0.04	0.04	0.03	0.04	0.04
Other Crops	3.2	3.2	2.8	2.5	3.2	3.2	2.8	2.6	3.3	3.4	3.2	3.2	3.3

Note: Details may not add up to totals due to rounding

Source: Philippine Statistics Authority

Table 3c. Percent Distribution of Value of Livestock and Poultry Production at Constant 2018 Prices  
 First Quarter 2019 to Second Quarter 2021  
 (in percent)

Subsector/ Commodity	2019				2020				2021		January to June		
	Q1	Q2	Q3	Q4	Q1	Q2	Q3	Q4	Q1	Q2	2019	2020	2021
Livestock	17.6	19.0	19.1	17.0	17.9	17.3	17.5	15.4	14.2	14.2	18.3	17.6	14.2
Hog	14.9	16.0	16.1	13.9	15.2	15.1	14.8	12.5	11.7	11.3	15.4	15.1	11.5
Cattle	1.5	1.6	1.6	1.6	1.5	1.1	1.4	1.6	1.3	1.5	1.5	1.3	1.4
Carabao	0.6	0.8	0.7	0.8	0.6	0.6	0.6	0.7	0.6	0.7	0.7	0.6	0.7
Goat	0.6	0.5	0.7	0.6	0.5	0.4	0.7	0.6	0.5	0.6	0.6	0.5	0.5
Dairy	0.1	0.1	0.1	0.05	0.1	0.1	0.1	0.1	0.1	0.1	0.1	0.1	0.1
Poultry	13.6	13.7	14.7	12.4	13.9	13.0	14.0	12.2	13.3	13.5	13.7	13.4	13.4
Chicken	9.8	10.2	10.7	9.0	9.9	9.4	9.9	8.6	9.1	9.3	10.0	9.6	9.2
Duck	0.2	0.1	0.2	0.2	0.2	0.1	0.2	0.2	0.2	0.2	0.2	0.2	0.2
Chicken Eggs	3.3	3.1	3.5	3.0	3.6	3.2	3.7	3.1	3.8	3.7	3.2	3.4	3.8
Duck Eggs	0.2	0.3	0.3	0.3	0.3	0.3	0.3	0.3	0.3	0.3	0.3	0.3	0.3

Note: Details may not add up to totals due to rounding  
 Source: Philippine Statistics Authority

Table 3d. Percent Distribution of Value of Fisheries Production at Constant 2018 Prices  
 First Quarter 2019 to Second Quarter 2021  
 (in percent)

Subsector/ Commodity	2019				2020				2021		January to June		
	Q1	Q2	Q3	Q4	Q1	Q2	Q3	Q4	Q1	Q2	2019	2020	2021
Fisheries	13.3	16.0	15.6	14.7	13.2	16.0	15.8	14.5	13.6	16.1	14.6	14.6	14.9
Milkfish (Bangus)	1.5	2.4	2.9	2.7	1.6	2.4	2.7	2.9	1.7	2.8	1.9	2.0	2.2
Tilapia	1.5	1.4	1.0	1.4	1.5	1.3	1.0	1.2	1.7	1.6	1.5	1.4	1.6
Tiger Prawn (Sugpo)	0.9	1.4	0.9	1.6	0.9	1.4	0.8	1.4	1.0	1.4	1.2	1.2	1.2
Skipjack (Gulyasan)	1.1	0.8	1.1	0.9	0.9	1.0	1.1	0.9	1.1	0.9	1.0	0.9	1.0
Roundscad (Galunggong)	0.8	0.9	0.7	0.4	0.7	1.1	0.8	0.5	0.6	0.9	0.8	0.9	0.8
Seaweed	0.5	0.5	0.5	0.9	0.5	0.5	0.5	0.9	0.5	0.5	0.5	0.5	0.5
Yellowfin Tuna (Tambakol/Bariles)	0.6	0.7	0.5	0.5	0.5	0.8	0.6	0.5	0.4	0.5	0.7	0.6	0.5
Mudcrab (Alimango)	0.7	0.4	0.5	0.5	0.7	0.4	0.4	0.6	0.9	0.5	0.5	0.6	0.7
Frigate Tuna (Tulingan)	0.4	0.6	0.5	0.4	0.4	0.6	0.6	0.4	0.4	0.5	0.5	0.5	0.4
Big-eyed Scad (Matangbaka)	0.4	0.5	0.5	0.4	0.4	0.5	0.5	0.4	0.5	0.5	0.5	0.4	0.5
<i>Bali Sardinella</i> (Tamban)	0.3	0.5	0.5	0.3	0.4	0.8	0.6	0.4	0.4	0.7	0.4	0.6	0.6
Squid (Pusit)	0.3	0.4	0.3	0.3	0.3	0.3	0.3	0.3	0.3	0.3	0.3	0.3	0.3
Blue Crab (Alimasag)	0.2	0.3	0.4	0.2	0.2	0.3	0.5	0.2	0.2	0.4	0.2	0.3	0.3
Bigeye Tuna (Tambakol/ Bariles)	0.1	0.2	0.2	0.2	0.1	0.2	0.3	0.2	0.2	0.2	0.2	0.2	0.2
Grouper (Lapu-lapu)	0.2	0.2	0.7	0.2	0.2	0.2	0.8	0.2	0.1	0.2	0.2	0.2	0.2
Indian Mackerel (Alumahan)	0.2	0.3	0.3	0.2	0.2	0.2	0.3	0.2	0.2	0.2	0.3	0.2	0.2
Threadfin Bream (Bisugo)	0.3	0.3	0.3	0.3	0.3	0.2	0.3	0.2	0.2	0.2	0.3	0.3	0.2
Slipmouth (Sapsap)	0.1	0.2	0.2	0.2	0.1	0.1	0.2	0.1	0.1	0.1	0.2	0.1	0.1
Cavalla (Talakitok)	0.2	0.2	0.2	0.1	0.2	0.2	0.2	0.2	0.2	0.2	0.2	0.2	0.2
Fimbriated Sardines (Tunsoy)	0.2	0.1	0.2	0.1	0.1	0.1	0.1	0.1	0.1	0.1	0.2	0.1	0.1
Other Fisheries	3.0	3.6	3.1	2.9	2.8	3.5	3.2	2.9	2.8	3.6	3.3	3.2	3.2

Note: Details may not add up to totals due to rounding

Source: Philippine Statistics Authority

Table 4a. Value of Production in Philippine Agriculture and Fisheries at Current Prices  
 First Quarter 2019 to Second Quarter 2021  
 (in Million PhP)

Subsector	2019				2020				2021		January to June		
	Q1	Q2	Q3	Q4	Q1	Q2	Q3	Q4	Q1	Q2	2019	2020	2021
Crops	258,396	236,979	213,428	274,954	248,973	262,213	227,223	324,505	270,451	267,179	495,375	511,186	537,630
Livestock	77,450	79,650	72,531	74,068	74,084	72,355	70,324	83,101	81,918	85,781	157,100	146,439	167,698
Poultry	54,042	55,821	60,477	72,317	62,418	61,569	63,566	74,862	69,054	70,139	109,863	123,987	139,193
Fisheries	63,239	75,010	63,953	79,450	62,607	73,208	63,369	74,305	66,882	80,182	138,249	135,815	147,064
AGRICULTURE	453,126	447,460	410,388	500,790	448,082	469,345	424,481	556,772	488,304	503,281	900,586	917,427	991,586

Note: Details may not add up to totals due to rounding

Source: Philippine Statistics Authority

Table 4b. Value of Crop Production at Current Prices  
 First Quarter 2019 to Second Quarter 2021  
 (in Million Php)

Subsector/ Commodity	2019				2020				2021		January to June		
	Q1	Q2	Q3	Q4	Q1	Q2	Q3	Q4	Q1	Q2	2019	2020	2021
Crops	258,396	236,979	213,428	274,954	248,973	262,213	227,223	324,505	270,451	267,179	495,375	511,186	537,630
Palay	83,243	69,050	49,393	112,759	69,106	76,551	59,930	113,169	77,578	71,246	152,293	145,657	148,824
Corn	33,691	16,456	36,855	19,351	28,607	17,100	35,402	19,514	31,159	19,392	50,147	45,707	50,551
Banana	47,090	51,221	54,925	54,159	49,187	59,069	62,656	64,101	53,943	55,468	98,310	108,255	109,410
Coconut	23,443	23,842	28,087	28,068	23,033	24,086	28,696	34,017	27,034	27,891	47,285	47,119	54,925
Mango	4,035	17,836	3,126	1,580	4,330	20,722	2,673	1,519	5,344	22,817	21,871	25,052	28,161
Sugarcane	22,369	5,210	411	10,868	21,555	9,299	637	11,394	19,280	12,030	27,579	30,854	31,309
Pineapple	8,324	10,149	9,217	10,989	9,436	9,465	8,184	31,409	10,164	10,573	18,473	18,901	20,737
Cassava	3,259	4,752	6,945	6,529	4,087	6,108	5,260	9,251	3,949	6,449	8,011	10,195	10,398
Rubber	1,058	3,218	2,729	3,614	1,046	2,155	2,196	4,020	1,218	3,361	4,276	3,201	4,580
Sweet Potato	1,881	2,891	2,684	2,349	2,337	3,511	3,093	2,904	2,385	3,001	4,771	5,848	5,387
Onion	5,610	1,372	1	528	10,154	2,749	1	708	7,632	3,401	6,981	12,903	11,034
Eggplant	2,450	2,639	1,092	909	2,543	2,748	875	967	3,277	3,019	5,088	5,292	6,296
Coffee	903	342	290	1,500	898	298	267	1,459	927	296	1,244	1,196	1,223
Tobacco	984	3,971	437	247	1,062	3,992	385	753	993	3,889	4,955	5,054	4,882
Abaca	991	1,185	1,270	1,086	940	1,151	1,269	1,112	815	1,124	2,177	2,091	1,939
Tomato	2,021	1,931	807	716	2,126	1,651	727	1,211	2,944	1,569	3,952	3,777	4,512
Potato	626	365	553	2,418	963	556	584	2,473	774	421	991	1,519	1,195
Ampalaya	772	1,252	815	852	775	1,243	701	939	914	1,215	2,024	2,018	2,129
Cabbage	469	501	242	1,070	628	669	264	2,080	1,023	458	970	1,296	1,481
Calamansi	390	639	1,632	704	372	438	1,301	642	453	454	1,029	810	907
Mongo	490	1,375	93	207	528	1,431	92	197	601	1,364	1,865	1,959	1,965
Cacao	165	179	202	258	200	202	239	272	211	204	343	402	415
Other Crops	14,134	16,605	11,623	14,191	15,060	17,021	11,792	20,396	17,833	17,537	30,738	32,080	35,370

Note: Details may not add up to totals due to rounding

Source: Philippine Statistics Authority



**Table 4c. Value of Livestock and Poultry Production at Current Prices**  
**First Quarter 2019 to Second Quarter 2021**  
**(in Million PhP)**

Subsector/ Commodity	2019				2020				2021		January to June		
	Q1	Q2	Q3	Q4	Q1	Q2	Q3	Q4	Q1	Q2	2019	2020	2021
Livestock	77,450	79,650	72,531	74,068	74,084	72,355	70,324	83,101	81,918	85,781	157,100	146,439	167,698
Hog	64,666	65,756	59,625	57,437	60,250	61,077	57,266	66,480	67,942	69,044	130,422	121,326	136,987
Cattle	6,796	7,280	6,747	8,854	7,676	5,868	6,830	9,162	7,651	9,046	14,076	13,543	16,697
Carabao	2,963	3,693	3,003	4,334	3,245	2,994	3,029	3,963	3,278	4,386	6,655	6,239	7,665
Goat	2,769	2,655	2,901	3,195	2,629	2,125	2,882	3,182	2,692	2,980	5,424	4,754	5,672
Dairy	256	266	255	248	285	291	317	314	353	324	523	576	677
Poultry	54,042	55,821	60,477	72,317	62,418	61,569	63,566	74,862	69,054	70,139	109,863	123,987	139,193
Chicken	37,612	39,593	42,560	51,538	42,611	41,523	42,291	53,199	47,837	47,740	77,205	84,135	95,577
Duck	1,061	611	887	990	1,061	639	1,042	1,197	1,254	1,139	1,671	1,700	2,394
Chicken Eggs	14,275	14,259	15,889	18,369	17,540	17,974	19,029	18,978	18,696	19,785	28,534	35,514	38,482
Duck Eggs	1,094	1,359	1,141	1,420	1,205	1,433	1,204	1,488	1,266	1,475	2,453	2,638	2,740

Note: Details may not add up to totals due to rounding  
Source: Philippine Statistics Authority

Table 4d. Value of Fisheries Production at Current Prices  
 First Quarter 2019 to Second Quarter 2021  
 (in Million PhP)

Subsector/ Commodity	2019				2020				2021		January to June		
	Q1	Q2	Q3	Q4	Q1	Q2	Q3	Q4	Q1	Q2	2019	2020	2021
Fisheries	63,239	75,010	63,953	79,450	62,607	73,208	63,369	74,305	66,882	80,182	138,249	135,815	147,064
Milkfish (Bangus)	6,886	10,267	11,616	14,584	7,334	11,585	9,926	15,160	7,679.6	13,387	17,153	18,919	21,066
Tilapia	6,797	6,358	4,599	7,425	7,403	6,565	4,857	6,680	8,040.9	7,562	13,156	13,968	15,603
Tiger Prawn (Sugpo)	4,453	6,449	4,059	8,158	4,093	6,747	2,947	6,810	4,348.0	6,777	10,902	10,841	11,125
Skipjack (Gulyasan)	5,471	4,580	4,826	5,577	4,229	4,723	4,433	4,631	5,546.3	5,175	10,051	8,951	10,721
Roundscad (Galunggong)	3,269	3,734	2,926	2,251	3,290	4,703	3,423	2,416	3,352.4	4,514	7,003	7,994	7,867
Seaweed	2,464	2,479	2,236	4,666	2,459	2,464	2,279	3,412	2,543.6	2,324	4,943	4,923	4,867
Yellowfin Tuna (Tambakol/Bariles)	3,316	3,779	2,415	3,168	2,670	3,085	2,413	2,703	2,283.5	2,679	7,096	5,755	4,962
Mudcrab (Alimango)	2,964	1,890	1,939	2,824	3,241	1,908	1,657	2,574	4,952.0	2,109	4,854	5,149	7,061
Frigate Tuna (Tulingan)	2,028	2,835	2,066	2,044	2,127	2,501	2,226	2,080	1,984.5	2,425	4,862	4,628	4,409
Big-eyed Scad (Matangbaka)	1,959	2,383	2,128	2,397	2,125	2,068	2,112	2,501	2,343.8	2,417	4,341	4,194	4,761
<i>Bali Sardinella</i> (Tamban)	1,136	2,337	2,127	1,402	1,375	2,763	2,721	1,671	1,558.1	3,246	3,473	4,138	4,804
Squid (Pusit)	1,260	1,800	1,267	1,451	1,400	1,534	1,273	1,400	1,365.6	1,687	3,060	2,934	3,053
Blue Crab (Alimasag)	902	1,356	1,277	1,020	1,044	1,060	1,588	756	1,021.1	1,669	2,258	2,103	2,690
Bigeye Tuna (Tambakol/ Bariles)	495	629	749	658	505	571	878	587	543.4	673	1,124	1,076	1,216
Grouper (Lapu-lapu)	728	910	997	831	786	853	2,024	762	703.6	1,040	1,638	1,640	1,744
Indian Mackerel (Alumahan)	1,198	1,573	1,197	1,320	1,152	1,189	1,230	1,400	1,247.4	1,289	2,771	2,341	2,537
Threadfin Bream (Bisugo)	1,283	1,371	1,339	1,485	1,403	1,234	1,418	1,238	1,098.1	1,071	2,654	2,636	2,169
Slipmouth (Sapsap)	632	769	782	829	542	641	725	721	681.9	720	1,401	1,183	1,402
Cavalla (Talakitok)	813	826	725	797	821	908	874	853	939.2	1,063	1,639	1,729	2,002
Fimbriated Sardines (Tunsoy)	636	720	598	484	523	470	483	378	397.9	481	1,356	993	879
Other Fisheries	14,550	17,965	14,082	16,082	14,083	15,639	13,882	15,571	14,251.2	17,874	32,514	29,722	32,125

Note: Details may not add up to totals due to rounding

Source: Philippine Statistics Authority

Table 5a. Growth Rates of Value of Production in Philippine Agriculture and Fisheries  
at Current Prices, First Quarter 2019 to Second Quarter 2021  
(in percent)

Subsector	2019-2020				2020-2021		January to June	
	Q1	Q2	Q3	Q4	Q1	Q2	2019-2020	2020-2021
Crops	-3.6	10.6	6.5	18.0	8.6	1.9	3.2	5.2
Livestock	-4.3	-9.2	-3.0	12.2	10.6	18.6	-6.8	14.5
Poultry	15.5	10.3	5.1	3.5	10.6	13.9	12.9	12.3
Fisheries	-1.0	-2.4	-0.9	-6.5	6.8	9.5	-1.8	8.3
<b>AGRICULTURE</b>	-1.1	4.9	3.4	11.2	9.0	7.2	1.9	8.1

Source: Philippine Statistics Authority

Table 5b. Growth Rates of Value of Crop Production at Current Prices  
 First Quarter 2019 to Second Quarter 2021  
 (in percent)

Subsector/ Commodity	2019-2020				2020-2021		January to June	
	Q1	Q2	Q3	Q4	Q1	Q2	2019-2020	2020-2021
Crops	-3.6	10.6	6.5	18.0	8.6	1.9	3.2	5.2
Palay	-17.0	10.9	21.3	0.4	12.3	-6.9	-4.4	2.2
Corn	-15.1	3.9	-3.9	0.8	8.9	13.4	-8.9	10.6
Banana	4.5	15.3	14.1	18.4	9.7	-6.1	10.1	1.1
Coconut	-1.7	1.0	2.2	21.2	17.4	15.8	-0.4	16.6
Mango	7.3	16.2	-14.5	-3.9	23.4	10.1	14.5	12.4
Sugarcane	-3.6	78.5	55.2	4.8	-10.6	29.4	11.9	1.5
Pineapple	13.4	-6.7	-11.2	185.8	7.7	11.7	2.3	9.7
Cassava	25.4	28.5	-24.3	41.7	-3.4	5.6	27.3	2.0
Rubber	-1.2	-33.0	-19.5	11.2	16.5	56.0	-25.1	43.1
Sweet Potato	24.3	21.5	15.2	23.6	2.1	-14.5	22.6	-7.9
Onion	81.0	100.4	36.7	33.9	-24.8	23.7	84.8	-14.5
Eggplant	3.8	4.2	-19.8	6.3	28.8	9.8	4.0	19.0
Coffee	-0.5	-12.8	-7.9	-2.8	3.2	-0.5	-3.9	2.3
Tobacco	7.9	0.5	-12.0	204.5	-6.5	-2.6	2.0	-3.4
Abaca	-5.1	-2.9	-0.1	2.4	-13.3	-2.3	-3.9	-7.3
Tomato	5.2	-14.5	-10.0	69.1	38.4	-5.0	-4.4	19.5
Potato	53.9	52.2	5.6	2.2	-19.6	-24.3	53.3	-21.3
Ampalaya	0.4	-0.7	-14.0	10.2	18.0	-2.3	-0.3	5.5
Cabbage	33.8	33.4	9.4	94.3	63.0	-31.5	33.6	14.2
Calamansi	-4.7	-31.5	-20.3	-8.8	21.8	3.6	-21.3	11.9
Mongo	7.9	4.1	-1.7	-4.7	13.9	-4.7	5.1	0.3
Cacao	21.3	13.2	18.3	5.6	5.5	1.0	17.1	3.2
Other Crops	6.6	2.5	1.5	43.7	18.4	3.0	4.4	10.3

Source: Philippine Statistics Authority

Table 5c. Growth Rates of Value of Livestock and Poultry Production at Current Prices  
 First Quarter 2019 to Second Quarter 2021  
 (in percent)

Subsector/ Commodity	2019-2020				2020-2021		January to June	
	Q1	Q2	Q3	Q4	Q1	Q2	2019-2020	2020-2021
Livestock	-4.3	-9.2	-3.0	12.2	10.6	18.6	-6.8	14.5
Hog	-6.8	-7.1	-4.0	15.7	12.8	13.0	-7.0	12.9
Cattle	12.9	-19.4	1.2	3.5	-0.3	54.2	-3.8	23.3
Carabao	9.5	-18.9	0.9	-8.6	1.0	46.5	-6.3	22.8
Goat	-5.1	-19.9	-0.6	-0.4	2.4	40.2	-12.4	19.3
Dairy	11.1	9.3	24.0	26.6	23.9	11.4	10.2	17.6
Poultry	15.5	10.3	5.1	3.5	10.6	13.9	12.9	12.3
Chicken	13.3	4.9	-0.6	3.2	12.3	15.0	9.0	13.6
Duck	0.002	4.7	17.6	20.8	18.2	78.3	1.7	40.8
Chicken Eggs	22.9	26.1	19.8	3.3	6.6	10.1	24.5	8.4
Duck Eggs	10.2	5.4	5.5	4.8	5.0	2.9	7.5	3.9

Source: Philippine Statistics Authority

Table 5d. Growth Rates of Value of Fisheries Production at Current Prices  
First Quarter 2019 to Second Quarter 2021  
(in percent)

Subsector/ Commodity	2019-2020				2020-2021		January to June	
	Q1	Q2	Q3	Q4	Q1	Q2	2019-2020	2020-2021
Fisheries	-1.0	-2.4	-0.9	-6.5	6.8	9.5	-1.8	8.3
Milkfish (Bangus)	6.5	12.8	-14.5	3.9	4.7	15.6	10.3	11.4
Tilapia	8.9	3.2	5.6	-10.0	8.6	15.2	6.2	11.7
Tiger Prawn (Sugpo)	-8.1	4.6	-27.4	-16.5	6.2	0.4	-0.6	2.6
Skipjack (Gulyasan)	-22.7	3.1	-8.2	-17.0	31.2	9.6	-10.9	19.8
Roundscad (Galunggong)	0.7	26.0	17.0	7.3	1.9	-4.0	14.2	-1.6
Seaweed	-0.2	-0.6	1.9	-26.9	3.5	-5.7	-0.4	-1.1
Yellowfin Tuna (Tambakol/Bariles)	-19.5	-18.4	-0.1	-14.7	-14.5	-13.1	-18.9	-13.8
Mudcrab (Alimango)	9.3	0.9	-14.6	-8.9	52.8	10.5	6.1	37.1
Frigate Tuna (Tulingan)	4.9	-11.8	7.7	1.8	-6.7	-3.0	-4.8	-4.7
Big-eyed Scad (Matangbaka)	8.5	-13.2	-0.8	4.4	10.3	16.9	-3.4	13.5
<i>Bali Sardinella</i> (Tamban)	21.0	18.2	28.0	19.2	13.4	17.5	19.1	16.1
Squid (Pusit)	11.1	-14.8	0.5	-3.5	-2.4	10.0	-4.1	4.1
Blue Crab (Alimasag)	15.7	-21.9	24.4	-25.9	-2.2	57.5	-6.8	27.9
Bigeye Tuna (Tambakol/ Bariles)	2.1	-9.3	17.2	-10.8	7.5	17.8	-4.2	13.0
Grouper (Lapu-lapu)	8.0	-6.2	102.9	-8.3	-10.5	21.9	0.1	6.4
Indian Mackerel (Alumahan)	-3.8	-24.4	2.8	6.1	8.3	8.4	-15.5	8.3
Threadfin Bream (Bisugo)	9.3	-10.0	5.9	-16.7	-21.7	-13.2	-0.7	-17.7
Slipmouth (Sapsap)	-14.2	-16.7	-7.3	-13.0	25.7	12.3	-15.6	18.5
Cavalla (Talakitok)	1.1	9.9	20.4	7.0	14.3	17.1	5.5	15.8
Fimbriated Sardines (Tunsoy)	-17.8	-34.8	-19.3	-21.9	-24.0	2.5	-26.8	-11.4
Other Fisheries	-3.2	-12.9	-1.4	-3.2	1.2	14.3	-8.6	8.1

Source: Philippine Statistics Authority

Table 6a. Percent Distribution of Value of Production in Philippine Agriculture and Fisheries at Current Prices, First Quarter 2019 to Second Quarter 2021 (in percent)

Subsector	2019				2020				2021		January to June		
	Q1	Q2	Q3	Q4	Q1	Q2	Q3	Q4	Q1	Q2	2019	2020	2021
Crops	57.0	53.0	52.0	54.9	55.6	55.9	53.5	58.3	55.4	53.1	55.0	55.7	54.2
Livestock	17.1	17.8	17.7	14.8	16.5	15.4	16.6	14.9	16.8	17.0	17.4	16.0	16.9
Poultry	11.9	12.5	14.7	14.4	13.9	13.1	15.0	13.4	14.1	13.9	12.2	13.5	14.0
Fisheries	14.0	16.8	15.6	15.9	14.0	15.6	14.9	13.3	13.7	15.9	15.4	14.8	14.8
AGRICULTURE	100.0	100.0	100.0	100.0	100.0	100.0	100.0	100.0	100.0	100.0	100.0	100.0	100.0

Note: Details may not add up to totals due to rounding

Source: Philippine Statistics Authority

Table 6b. Percent Distribution of Value of Crop Production at Current Prices  
 First Quarter 2019 to Second Quarter 2021  
 (in percent)

Subsector/ Commodity	2019				2020				2021		January to June		
	Q1	Q2	Q3	Q4	Q1	Q2	Q3	Q4	Q1	Q2	2019	2020	2021
Crops	57.0	53.0	52.0	54.9	55.6	55.9	53.5	58.3	55.4	53.1	55.0	55.7	54.2
Palay	18.4	15.4	12.0	22.5	15.4	16.3	14.1	20.3	15.9	14.2	16.9	15.9	15.0
Corn	7.4	3.7	9.0	3.9	6.4	3.6	8.3	3.5	6.4	3.9	5.6	5.0	5.1
Banana	10.4	11.4	13.4	10.8	11.0	12.6	14.8	11.5	11.0	11.0	10.9	11.8	11.0
Coconut	5.2	5.3	6.8	5.6	5.1	5.1	6.8	6.1	5.5	5.5	5.3	5.1	5.5
Mango	0.9	4.0	0.8	0.3	1.0	4.4	0.6	0.3	1.1	4.5	2.4	2.7	2.8
Sugarcane	4.9	1.2	0.1	2.2	4.8	2.0	0.2	2.0	3.9	2.4	3.1	3.4	3.2
Pineapple	1.8	2.3	2.2	2.2	2.1	2.0	1.9	5.6	2.1	2.1	2.1	2.1	2.1
Cassava	0.7	1.1	1.7	1.3	0.9	1.3	1.2	1.7	0.8	1.3	0.9	1.1	1.0
Rubber	0.2	0.7	0.7	0.7	0.2	0.5	0.5	0.7	0.2	0.7	0.5	0.3	0.5
Sweet Potato	0.4	0.6	0.7	0.5	0.5	0.7	0.7	0.5	0.5	0.6	0.5	0.6	0.5
Onion	1.2	0.3	0.0002	0.1	2.3	0.6	0.0003	0.1	1.6	0.7	0.8	1.4	1.1
Eggplant	0.5	0.6	0.3	0.2	0.6	0.6	0.2	0.2	0.7	0.6	0.6	0.6	0.6
Coffee	0.2	0.1	0.1	0.3	0.2	0.1	0.1	0.3	0.2	0.1	0.1	0.1	0.1
Tobacco	0.2	0.9	0.1	0.05	0.2	0.9	0.1	0.1	0.2	0.8	0.6	0.6	0.5
Abaca	0.2	0.3	0.3	0.2	0.2	0.2	0.3	0.2	0.2	0.2	0.2	0.2	0.2
Tomato	0.4	0.4	0.2	0.1	0.5	0.4	0.2	0.2	0.6	0.3	0.4	0.4	0.5
Potato	0.1	0.1	0.1	0.5	0.2	0.1	0.1	0.4	0.2	0.1	0.1	0.2	0.1
Ampalaya	0.2	0.3	0.2	0.2	0.2	0.3	0.2	0.2	0.2	0.2	0.2	0.2	0.2
Cabbage	0.1	0.1	0.1	0.2	0.1	0.1	0.1	0.4	0.2	0.1	0.1	0.1	0.1
Calamansi	0.1	0.1	0.4	0.1	0.1	0.1	0.3	0.1	0.1	0.1	0.1	0.1	0.1
Mongo	0.1	0.3	0.02	0.04	0.1	0.3	0.02	0.04	0.1	0.3	0.2	0.2	0.2
Cacao	0.04	0.04	0.05	0.1	0.04	0.04	0.1	0.05	0.04	0.04	0.04	0.04	0.04
Other Crops	3.1	3.7	2.8	2.8	3.4	3.6	2.8	3.7	3.7	3.5	3.4	3.5	3.6

Note: Details may not add up to totals due to rounding

Source: Philippine Statistics Authority



**Table 6c. Percent Distribution of Value of Livestock and Poultry Production at Current Prices  
First Quarter 2019 to Second Quarter 2021  
(in percent)**

Subsector/ Commodity	2019				2020				2021		January to June		
	Q1	Q2	Q3	Q4	Q1	Q2	Q3	Q4	Q1	Q2	2019	2020	2021
Livestock	17.1	17.8	17.7	14.8	16.5	15.4	16.6	14.9	16.8	17.0	17.4	16.0	16.9
Hog	14.3	14.7	14.5	11.5	13.4	13.0	13.5	11.9	13.9	13.7	14.5	13.2	13.8
Cattle	1.5	1.6	1.6	1.8	1.7	1.3	1.6	1.6	1.6	1.8	1.6	1.5	1.7
Carabao	0.7	0.8	0.7	0.9	0.7	0.6	0.7	0.7	0.7	0.9	0.7	0.7	0.8
Goat	0.6	0.6	0.7	0.6	0.6	0.5	0.7	0.6	0.6	0.6	0.6	0.5	0.6
Dairy	0.1	0.1	0.1	0.05	0.1	0.1	0.1	0.1	0.1	0.1	0.1	0.1	0.1
Poultry	11.9	12.5	14.7	14.4	13.9	13.1	15.0	13.4	14.1	13.9	12.2	13.5	14.0
Chicken	8.3	8.8	10.4	10.3	9.5	8.8	10.0	9.6	9.8	9.5	8.6	9.2	9.6
Duck	0.2	0.1	0.2	0.2	0.2	0.1	0.2	0.2	0.3	0.2	0.2	0.2	0.2
Chicken Eggs	3.2	3.2	3.9	3.7	3.9	3.8	4.5	3.4	3.8	3.9	3.2	3.9	3.9
Duck Eggs	0.2	0.3	0.3	0.3	0.3	0.3	0.3	0.3	0.3	0.3	0.3	0.3	0.3

Note: Details may not add up to totals due to rounding  
Source: Philippine Statistics Authority

Table 6d. Percent Distribution of Value of Fisheries Production at Current Prices  
First Quarter 2019 to Second Quarter 2021  
(in percent)

Subsector/ Commodity	2019				2020				2021		January to June		
	Q1	Q2	Q3	Q4	Q1	Q2	Q3	Q4	Q1	Q2	2019	2020	2021
Fisheries	14.0	16.8	15.6	15.9	14.0	15.6	14.9	13.3	13.7	15.9	15.4	14.8	14.8
Milkfish (Bangus)	1.5	2.3	2.8	2.9	1.6	2.5	2.3	2.7	1.6	2.7	1.9	2.1	2.1
Tilapia	1.5	1.4	1.1	1.5	1.7	1.4	1.1	1.2	1.6	1.5	1.5	1.5	1.6
Tiger Prawn (Sugpo)	1.0	1.4	1.0	1.6	0.9	1.4	0.7	1.2	0.9	1.3	1.2	1.2	1.1
Skipjack (Gulyasan)	1.2	1.0	1.2	1.1	0.9	1.0	1.0	0.8	1.1	1.0	1.1	1.0	1.1
Roundscad (Galunggong)	0.7	0.8	0.7	0.4	0.7	1.0	0.8	0.4	0.7	0.9	0.8	0.9	0.8
Seaweed	0.5	0.6	0.5	0.9	0.5	0.5	0.5	0.6	0.5	0.5	0.5	0.5	0.5
Yellowfin Tuna (Tambakol/Bariles)	0.7	0.8	0.6	0.6	0.6	0.7	0.6	0.5	0.5	0.5	0.8	0.6	0.5
Mudcrab (Alimango)	0.7	0.4	0.5	0.6	0.7	0.4	0.4	0.5	1.0	0.4	0.5	0.6	0.7
Frigate Tuna (Tulingan)	0.4	0.6	0.5	0.4	0.5	0.5	0.5	0.4	0.4	0.5	0.5	0.5	0.4
Big-eyed Scad (Matangbaka)	0.4	0.5	0.5	0.5	0.5	0.4	0.5	0.4	0.5	0.5	0.5	0.5	0.5
<i>Bali Sardinella</i> (Tamban)	0.3	0.5	0.5	0.3	0.3	0.6	0.6	0.3	0.3	0.6	0.4	0.5	0.5
Squid (Pusit)	0.3	0.4	0.3	0.3	0.3	0.3	0.3	0.3	0.3	0.3	0.3	0.3	0.3
Blue Crab (Alimasag)	0.2	0.3	0.3	0.2	0.2	0.2	0.4	0.1	0.2	0.3	0.3	0.2	0.3
Bigeye Tuna (Tambakol/ Bariles)	0.1	0.1	0.2	0.1	0.1	0.1	0.2	0.1	0.1	0.1	0.1	0.1	0.1
Grouper (Lapu-lapu)	0.2	0.2	0.2	0.2	0.2	0.2	0.5	0.1	0.1	0.2	0.2	0.2	0.2
Indian Mackerel (Alumahan)	0.3	0.4	0.3	0.3	0.3	0.3	0.3	0.3	0.3	0.3	0.3	0.3	0.3
Threadfin Bream (Bisugo)	0.3	0.3	0.3	0.3	0.3	0.3	0.3	0.2	0.2	0.2	0.3	0.3	0.2
Slipmouth (Sapsap)	0.1	0.2	0.2	0.2	0.1	0.1	0.2	0.1	0.1	0.1	0.2	0.1	0.1
Cavalla (Talakitok)	0.2	0.2	0.2	0.2	0.2	0.2	0.2	0.2	0.2	0.2	0.2	0.2	0.2
Fimbriated Sardines (Tunsoy)	0.1	0.2	0.1	0.1	0.1	0.1	0.1	0.1	0.1	0.1	0.2	0.1	0.1
Other Fisheries	3.2	4.0	3.4	3.2	3.1	3.3	3.3	2.8	2.9	3.6	3.6	3.2	3.2

Note: Details may not add up to totals due to rounding

Source: Philippine Statistics Authority

Table 7a. Volume of Crop Production  
 First Quarter 2019 to Second Quarter 2021  
 (in Thousand Metric Tons)

Subsector/ Commodity	2019				2020				2021		January to June		
	Q1	Q2	Q3	Q4	Q1	Q2	Q3	Q4	Q1	Q2	2019	2020	2021
Crops													
Palay	4,416.85	3,852.53	3,051.47	7,493.98	4,261.44	4,125.23	3,516.35	7,391.83	4,626.92	4,172.94	8,269.38	8,386.68	8,799.86
Corn	2,425.22	1,172.19	2,723.11	1,658.32	2,296.04	1,352.56	2,817.37	1,652.57	2,445.20	1,437.14	3,597.41	3,648.60	3,882.34
Banana	2,114.50	2,260.97	2,392.67	2,389.54	2,063.11	2,230.66	2,362.50	2,399.87	2,084.16	2,258.90	4,375.46	4,293.77	4,343.06
Coconut	3,308.41	3,324.13	4,059.70	4,072.81	3,167.38	3,263.68	4,002.31	4,057.55	3,141.86	3,291.35	6,632.55	6,431.06	6,433.22
Mango	94.92	556.88	58.36	27.78	94.07	558.07	59.58	27.53	97.90	556.82	651.79	652.14	654.71
Sugarcane	11,716.43	2,608.98	403.57	5,990.31	12,182.88	5,124.62	499.44	6,592.00	11,634.40	6,908.22	14,325.41	17,307.50	18,542.63
Pineapple	621.37	702.25	712.29	711.94	626.52	712.26	651.13	712.64	662.50	744.82	1,323.62	1,338.78	1,407.32
Cassava	514.23	751.46	591.96	773.15	515.46	722.79	590.93	778.58	477.68	692.60	1,265.69	1,238.25	1,170.28
Rubber	45.74	125.37	108.78	151.79	45.75	116.94	104.43	155.28	47.49	123.82	171.10	162.69	171.31
Sweet Potato	112.29	150.09	134.06	129.42	116.52	157.47	137.70	135.20	115.41	157.68	262.38	273.99	273.09
Onion	152.48	60.08	0.03	9.49	163.66	55.98	0.02	9.87	141.17	68.27	212.56	219.64	209.45
Eggplant	80.52	106.33	38.46	24.57	75.40	104.44	39.76	23.13	76.12	106.66	186.86	179.84	182.78
Coffee	17.16	6.07	5.79	31.02	17.22	5.88	5.75	31.79	19.35	5.87	23.24	23.10	25.22
Tobacco	12.78	36.41	1.30	0.57	12.72	37.62	0.91	1.19	11.93	36.83	49.19	50.34	48.76
Abaca	15.85	18.90	20.05	17.40	14.97	18.28	20.09	17.62	12.77	18.06	34.75	33.25	30.83
Tomato	95.30	71.95	27.91	28.13	94.22	74.27	27.52	26.00	95.87	76.47	167.25	168.48	172.34
Potato	23.72	13.22	15.41	63.71	23.13	12.52	16.58	61.33	17.02	15.63	36.94	35.65	32.65
Ampalaya	18.33	30.50	20.55	19.96	18.26	30.67	20.38	18.50	18.63	31.49	48.84	48.93	50.13
Cabbage	30.93	22.50	15.86	58.77	32.32	22.36	15.07	60.06	29.21	25.27	53.43	54.68	54.48
Calamansi	14.95	18.02	66.76	26.24	13.31	14.51	55.47	25.39	13.10	13.38	32.97	27.82	26.48
Mongo	8.14	23.56	1.43	3.12	8.63	23.80	1.47	3.13	9.17	21.77	31.70	32.43	30.94
Cacao	1.72	1.92	2.27	2.58	2.01	2.02	2.54	2.76	2.25	2.22	3.64	4.04	4.47
Other Crops	811.10	957.76	752.17	913.60	804.81	961.35	755.15	893.18	798.64	991.61	1,768.86	1,766.16	1,790.25

VALUE OF PRODUCTION IN PHILIPPINE AGRICULTURE AND FISHERIES

Source: Philippine Statistics Authority

Table 7b. Volume of Livestock and Poultry Production  
 First Quarter 2019 to Second Quarter 2021  
 (in Thousand Metric Tons)

Subsector/ Commodity	2019				2020				2021		January to June		
	Q1	Q2	Q3	Q4	Q1	Q2	Q3	Q4	Q1	Q2	2019	2020	2021
Livestock													
Hog	567.42	580.11	551.62	597.51	568.67	550.02	508.91	515.05	421.79	406.07	1,147.53	1,118.69	827.86
Cattle	61.30	65.20	59.27	74.85	60.62	46.00	53.36	69.15	53.24	60.99	126.50	106.61	114.23
Carabao	30.40	37.67	30.05	42.54	29.80	27.67	27.74	35.19	27.30	34.93	68.07	57.48	62.23
Goat	18.87	17.59	19.19	20.71	17.70	14.20	19.27	20.55	16.43	17.53	36.46	31.90	33.96
Dairy	6.14	6.27	6.01	5.96	6.44	6.58	6.97	6.72	6.62	6.14	12.41	13.02	12.76
Poultry													
Chicken	459.06	477.11	465.15	526.09	453.72	440.00	431.77	484.36	402.77	433.11	936.17	893.72	835.88
Duck	9.62	5.33	7.52	7.63	9.03	4.92	7.69	7.91	7.98	6.81	14.95	13.94	14.79
Chicken Eggs	142.01	141.45	145.54	154.23	148.17	148.45	154.29	154.87	152.05	167.93	283.46	296.62	319.99
Duck Eggs	11.17	13.89	10.98	13.53	11.37	13.76	11.23	14.12	11.52	14.00	25.06	25.13	25.52

Source: Philippine Statistics Authority

**Table 7c. Volume of Fisheries Production  
First Quarter 2019 to Second Quarter 2021  
(in Thousand Metric Tons)**

Subsector/ Commodity	2019				2020				2021		January to June		
	Q1	Q2	Q3	Q4	Q1	Q2	Q3	Q4	Q1	Q2	2019	2020	2021
Fisheries													
Milkfish (Bangus)	62.89	104.60	112.27	135.19	66.40	106.92	105.46	142.19	67.22	120.33	167.49	173.32	187.55
Tilapia	89.86	85.75	56.18	89.40	89.47	82.23	56.00	76.63	96.61	93.97	175.61	171.70	190.59
Tiger Prawn (Sugpo)	8.39	12.37	8.89	16.35	8.25	12.65	7.89	13.67	8.28	12.49	20.76	20.90	20.77
Skipjack (Gulyasan)	69.91	61.89	63.81	70.77	54.80	74.14	64.04	67.62	67.66	65.27	131.80	128.94	132.93
Roundsad (Galunggong)	53.35	62.97	42.51	30.17	49.31	74.90	47.97	29.83	41.63	61.20	116.32	124.20	102.83
Seaweed	351.93	309.23	306.72	532.08	349.77	312.48	303.32	503.08	339.51	310.96	661.16	662.25	650.47
Yellowfin Tuna (Tambakol/Bariles)	25.51	28.83	18.68	26.33	20.73	29.93	21.72	22.51	17.08	19.48	54.34	50.66	36.56
Mudcrab (Alimango)	6.24	4.60	5.35	6.09	6.85	4.29	4.83	6.22	8.23	4.87	10.84	11.14	13.10
Frigate Tuna (Tulingan)	26.57	36.67	24.63	23.64	25.53	33.34	28.00	23.60	22.89	27.72	63.24	58.87	50.61
Big-eyed Scad (Matangbaka)	24.62	29.93	25.74	29.14	25.63	25.98	25.50	28.11	26.80	26.71	54.56	51.61	53.51
Bali Sardinella (Tamban)	36.51	86.47	78.01	46.51	50.47	126.15	102.53	60.73	55.95	113.58	122.98	176.62	169.54
Squid (Pusit)	10.54	14.96	10.28	11.17	10.73	12.70	10.28	10.70	10.37	13.20	25.50	23.43	23.57
Blue Crab (Alimasag)	5.50	8.34	8.80	7.04	6.68	7.68	11.06	5.63	6.60	9.54	13.83	14.36	16.14
Bigeye Tuna (Tambakol/Bariles)	3.41	4.54	5.45	4.36	3.52	4.44	7.52	4.45	3.53	4.58	7.95	7.96	8.10
Grouper (Lapu-lapu)	4.44	5.10	5.68	4.50	4.32	4.98	5.83	4.46	3.76	5.42	9.55	9.30	9.18
Indian Mackerel (Alumahan)	13.93	18.29	13.55	14.45	12.65	13.96	13.07	13.96	12.45	13.66	32.22	26.62	26.11
Threadfin Bream (Bisugo)	9.48	10.42	10.55	10.94	9.97	9.82	10.47	9.10	8.15	8.13	19.90	19.79	16.28
Slipmouth (Sapsap)	10.20	11.30	11.59	13.38	7.93	9.33	11.09	11.23	9.16	9.81	21.50	17.26	18.97
Cavalla (Talakitok)	6.14	6.56	5.71	5.82	5.78	7.08	6.79	6.29	6.32	7.28	12.70	12.87	13.60
Fimbriated Sardines (Tunsoy)	23.60	24.23	15.77	14.13	17.45	13.10	12.34	8.90	10.76	11.30	47.83	30.55	22.06
Other Fisheries	170.02	214.60	157.57	181.14	160.16	211.11	160.77	171.37	150.66	209.84	384.62	371.27	360.50

Source: Philippine Statistics Authority

Table 8a. Growth Rates of Volume of Crop Production  
 First Quarter 2019 to Second Quarter 2021  
 (in percent)

Subsector/ Commodity	2019-2020				2020-2021		January to June	
	Q1	Q2	Q3	Q4	Q1	Q2	2019-2020	2020-2021
Crops								
Palay	-3.5	7.1	15.2	-1.4	8.6	1.2	1.4	4.9
Corn	-5.3	15.4	3.5	-0.3	6.5	6.3	1.4	6.4
Banana	-2.4	-1.3	-1.3	0.4	1.0	1.3	-1.9	1.1
Coconut	-4.3	-1.8	-1.4	-0.4	-0.8	0.8	-3.0	0.03
Mango	-0.9	0.2	2.1	-0.9	4.1	-0.2	0.1	0.4
Sugarcane	4.0	96.4	23.8	10.0	-4.5	34.8	20.8	7.1
Pineapple	0.8	1.4	-8.6	0.1	5.7	4.6	1.1	5.1
Cassava	0.2	-3.8	-0.2	0.7	-7.3	-4.2	-2.2	-5.5
Rubber	0.04	-6.7	-4.0	2.3	3.8	5.9	-4.9	5.3
Sweet Potato	3.8	4.9	2.7	4.5	-1.0	0.1	4.4	-0.3
Onion	7.3	-6.8	-1.2	4.0	-13.7	22.0	3.3	-4.6
Eggplant	-6.4	-1.8	3.4	-5.9	1.0	2.1	-3.8	1.6
Coffee	0.3	-3.1	-0.7	2.5	12.4	-0.3	-0.6	9.1
Tobacco	-0.5	3.3	-30.0	109.3	-6.2	-2.1	2.3	-3.1
Abaca	-5.6	-3.3	0.2	1.2	-14.7	-1.2	-4.3	-7.3
Tomato	-1.1	3.2	-1.4	-7.6	1.8	3.0	0.7	2.3
Potato	-2.5	-5.3	7.5	-3.7	-26.4	24.8	-3.5	-8.4
Ampalaya	-0.4	0.5	-0.8	-7.3	2.0	2.7	0.2	2.4
Cabbage	4.5	-0.6	-5.0	2.2	-9.6	13.1	2.3	-0.4
Calamansi	-10.9	-19.5	-16.9	-3.2	-1.6	-7.8	-15.6	-4.8
Mongo	6.0	1.0	3.0	0.4	6.2	-8.5	2.3	-4.6
Cacao	16.7	5.6	12.0	7.1	11.8	9.9	10.9	10.9
Other Crops	-0.8	0.4	0.4	-2.2	-0.8	3.1	-0.2	1.4

Source: Philippine Statistics Authority

Table 8b. Growth Rates of Volume of Livestock and Poultry Production  
 First Quarter 2019 to Second Quarter 2021  
 (in percent)

Subsector/ Commodity	2019-2020				2020-2021		January to June	
	Q1	Q2	Q3	Q4	Q1	Q2	2019-2020	2020-2021
Livestock								
Hog	0.2	-5.2	-7.7	-13.8	-25.8	-26.2	-2.5	-26.0
Cattle	-1.1	-29.5	-10.0	-7.6	-12.2	32.6	-15.7	7.1
Carabao	-2.0	-26.5	-7.7	-17.3	-8.4	26.2	-15.6	8.3
Goat	-6.2	-19.3	0.4	-0.8	-7.2	23.4	-12.5	6.4
Dairy	4.9	5.0	16.0	12.7	2.8	-6.6	4.9	-2.0
Poultry								
Chicken	-1.2	-7.8	-7.2	-7.9	-11.2	-1.6	-4.5	-6.5
Duck	-6.2	-7.8	2.3	3.7	-11.6	38.4	-6.7	6.0
Chicken Eggs	4.3	4.9	6.0	0.4	2.6	13.1	4.6	7.9
Duck Eggs	1.8	-1.0	2.3	4.4	1.3	1.8	0.3	1.5

Source: Philippine Statistics Authority

Table 8c. Growth Rates of Volume of Fisheries Production  
First Quarter 2019 to Second Quarter 2021  
(in percent)

Subsector/ Commodity	2019-2020				2020-2021		January to June	
	Q1	Q2	Q3	Q4	Q1	Q2	2019-2020	2020-2021
Fisheries								
Milkfish (Bangus)	5.6	2.2	-6.1	5.2	1.2	12.5	3.5	8.2
Tilapia	-0.4	-4.1	-0.3	-14.3	8.0	14.3	-2.2	11.0
Tiger Prawn (Sugpo)	-1.7	2.3	-11.3	-16.4	0.4	-1.3	0.7	-0.6
Skipjack (Gulyasan)	-21.6	19.8	0.4	-4.4	23.5	-12.0	-2.2	3.1
Roundscad (Galunggong)	-7.6	18.9	12.8	-1.1	-15.6	-18.3	6.8	-17.2
Seaweed	-0.6	1.1	-1.1	-5.5	-2.9	-0.5	0.2	-1.8
Yellowfin Tuna (Tambakol/Bariles)	-18.7	3.8	16.3	-14.5	-17.6	-34.9	-6.8	-27.8
Mudcrab (Alimango)	9.7	-6.7	-9.7	2.1	20.2	13.4	2.8	17.6
Frigate Tuna (Tulingan)	-3.9	-9.1	13.6	-0.2	-10.3	-16.9	-6.9	-14.0
Big-eyed Scad (Matangbaka)	4.1	-13.2	-0.9	-3.5	4.6	2.8	-5.4	3.7
<i>Bali Sardinella</i> (Tamban)	38.2	45.9	31.4	30.6	10.9	-10.0	43.6	-4.0
Squid (Pusit)	1.8	-15.1	0.05	-4.2	-3.4	4.0	-8.1	0.6
Blue Crab (Alimasag)	21.5	-7.9	25.6	-20.1	-1.2	24.2	3.8	12.4
Bigeye Tuna (Tambakol/ Bariles)	3.2	-2.1	38.1	2.1	0.3	3.0	0.1	1.8
Grouper (Lapu-lapu)	-2.8	-2.4	2.5	-0.8	-12.9	8.7	-2.6	-1.3
Indian Mackerel (Alumahan)	-9.2	-23.6	-3.5	-3.4	-1.6	-2.2	-17.4	-1.9
Threadfin Bream (Bisugo)	5.2	-5.8	-0.7	-16.8	-18.3	-17.1	-0.5	-17.7
Slipmouth (Sapsap)	-22.2	-17.4	-4.3	-16.0	15.5	5.1	-19.7	9.9
Cavalla (Talakitok)	-5.8	8.0	18.8	8.1	9.2	2.8	1.3	5.7
Fimbriated Sardines (Tunsoy)	-26.0	-45.9	-21.7	-37.0	-38.3	-13.7	-36.1	-27.8
Other Fisheries	-5.8	-1.6	2.0	-5.4	-5.9	-0.6	-3.5	-2.9

Source: Philippine Statistics Authority



Table 9a. Average Farmgate Prices of Crops  
First Quarter 2019 to Second Quarter 2021  
(PhP Per Kilogram)

Subsector/ Commodity	2019				2020				2021		January to June		
	Q1	Q2	Q3	Q4	Q1	Q2	Q3	Q4	Q1	Q2	2019	2020	2021
Crops													
Palay	18.85	17.92	16.19	15.05	16.22	18.56	17.04	15.31	16.77	17.07	18.42	17.37	16.91
Corn	13.89	14.04	13.53	11.67	12.46	12.64	12.57	11.81	12.74	13.49	13.94	12.53	13.02
Banana	22.27	22.65	22.96	22.67	23.84	26.48	26.52	26.71	25.88	24.56	22.47	25.21	25.19
Coconut	7.09	7.17	6.92	6.89	7.27	7.38	7.17	8.38	8.60	8.47	7.13	7.33	8.54
Mango	42.51	32.03	53.57	56.88	46.03	37.13	44.86	55.18	54.59	40.98	33.55	38.41	43.01
Sugarcane	1.91	2.00	1.02	1.81	1.77	1.81	1.28	1.73	1.66	1.74	1.93	1.78	1.69
Pineapple	13.40	14.45	12.94	15.44	15.06	13.29	12.57	44.07	15.34	14.20	13.96	14.12	14.73
Cassava	6.34	6.32	11.73	8.45	7.93	8.45	8.90	11.88	8.27	9.31	6.33	8.23	8.89
Rubber	23.14	25.67	25.09	23.81	22.86	18.43	21.02	25.89	25.65	27.15	24.99	19.67	26.73
Sweet Potato	16.75	19.26	20.02	18.15	20.06	22.30	22.46	21.48	20.67	19.03	18.18	21.35	19.72
Onion	36.79	22.83	39.06	55.66	62.04	49.12	54.04	71.69	54.06	49.82	32.84	58.75	52.68
Eggplant	30.42	24.82	28.39	37.01	33.73	26.32	22.01	41.79	43.05	28.30	27.23	29.42	34.44
Coffee	52.60	56.26	50.10	48.35	52.15	50.62	46.48	45.89	47.89	50.53	53.55	51.76	48.51
Tobacco	76.98	109.07	335.46	435.71	83.49	106.12	421.83	633.95	83.23	105.58	100.73	100.40	100.12
Abaca	62.53	62.72	63.34	62.37	62.82	62.96	63.15	63.12	63.83	62.26	62.63	62.90	62.91
Tomato	21.21	26.84	28.93	25.45	22.57	22.23	26.41	46.57	30.70	20.51	23.63	22.42	26.18
Potato	26.39	27.61	35.88	37.96	41.63	44.38	35.25	40.32	45.47	26.92	26.82	42.60	36.59
Ampalaya	42.11	41.05	39.68	42.69	42.44	40.55	34.41	50.75	49.08	38.57	41.45	41.25	42.48
Cabbage	15.17	22.28	15.24	18.21	19.41	29.91	17.55	34.63	35.01	18.12	18.16	23.71	27.18
Calamansi	26.10	35.47	24.44	26.82	27.93	30.18	23.45	25.27	34.56	33.91	31.22	29.11	34.23
Mongo	60.16	58.36	65.10	66.33	61.21	60.13	62.08	62.95	65.60	62.64	58.82	60.42	63.52
Cacao	95.62	93.21	89.06	99.83	99.40	99.96	94.03	98.42	93.79	91.83	94.35	99.68	92.82
Other Crops	17.43	17.34	15.45	15.53	18.71	17.70	15.62	22.84	22.33	17.69	17.38	18.16	19.76

Source: Philippine Statistics Authority

Table 9b. Average Farmgate Prices of Livestock and Poultry  
 First Quarter 2019 to Second Quarter 2021  
 (Php Per Kilogram)

Subsector/ Commodity	2019				2020				2021		January to June		
	Q1	Q2	Q3	Q4	Q1	Q2	Q3	Q4	Q1	Q2	2019	2020	2021
Livestock													
Hog	113.97	113.35	108.09	96.13	105.95	111.04	112.53	129.07	161.08	170.03	113.65	108.45	165.47
Cattle	110.85	111.66	113.83	118.29	126.62	127.57	127.99	132.49	143.71	148.32	111.27	127.03	146.17
Carabao	97.46	98.03	99.92	101.87	108.87	108.20	109.18	112.62	120.08	125.57	97.77	108.55	123.16
Goat	146.78	150.94	151.13	154.29	148.49	149.66	149.60	154.85	163.88	169.97	148.78	149.01	167.02
Dairy	41.76	42.50	42.50	41.64	44.26	44.25	45.41	46.77	53.36	52.80	42.13	44.25	53.09
Poultry													
Chicken	81.93	82.98	91.50	97.96	93.92	94.37	97.95	109.83	118.77	110.23	82.47	94.14	114.34
Duck	110.31	114.48	117.91	129.73	117.55	129.94	135.54	151.21	157.23	167.41	111.80	121.92	161.92
Chicken Eggs	100.52	100.80	109.17	119.10	118.38	121.07	123.33	122.55	122.96	117.82	100.66	119.73	120.26
Duck Eggs	97.94	97.87	103.88	104.96	105.97	104.18	107.19	105.38	109.86	105.36	97.90	104.99	107.39

Source: Philippine Statistics Authority

Table 9c. Average Farmgate Prices of Fisheries  
 First Quarter 2019 to Second Quarter 2021  
 (Php Per Kilogram)

Subsector/ Commodity	2019				2020				2021		January to June		
	Q1	Q2	Q3	Q4	Q1	Q2	Q3	Q4	Q1	Q2	2019	2020	2021
Fisheries													
Milkfish (Bangus)	109.50	98.15	103.46	107.88	110.45	108.35	94.12	106.62	114.25	111.25	102.41	109.16	112.32
Tilapia	75.64	74.15	81.87	83.05	82.74	79.84	86.74	87.17	83.23	80.47	74.91	81.35	81.87
Tiger Prawn (Sugpo)	530.75	521.18	456.51	498.99	496.42	533.27	373.73	498.16	525.05	542.57	525.04	518.73	535.58
Skipjack (Gulyasan)	78.25	74.00	75.64	78.80	77.16	63.70	69.23	68.49	81.97	79.28	76.26	69.42	80.65
Roundscad (Galunggong)	61.27	59.29	68.83	74.59	66.73	62.80	71.36	80.99	80.52	73.77	60.20	64.36	76.50
Seaweed	7.00	8.02	7.29	8.77	7.03	7.88	7.52	6.78	7.49	7.47	7.48	7.43	7.48
Yellowfin Tuna (Tambakol/Bariles)	129.97	131.11	129.27	120.33	128.79	103.06	111.11	120.11	133.68	137.55	130.57	113.59	135.74
Mudcrab (Alimango)	474.70	411.09	362.59	463.43	473.12	444.71	342.91	413.74	601.56	433.39	447.72	462.18	539.09
Frigate Tuna (Tulingan)	76.32	77.31	83.87	86.44	83.32	75.01	79.51	88.13	86.70	87.48	76.89	78.61	87.13
Big-eyed Scad (Matangbaka)	79.55	79.60	82.69	82.24	82.93	79.59	82.83	88.97	87.46	90.47	79.58	81.25	88.97
Bali Sardinella (Tamban)	31.13	27.02	27.26	30.15	27.23	21.90	26.54	27.52	27.85	28.58	28.24	23.43	28.34
Squid (Pusit)	119.51	120.33	123.27	129.98	130.47	120.78	123.81	130.84	131.70	127.80	119.99	125.22	129.51
Blue Crab (Alimasag)	164.05	162.68	145.14	144.79	156.25	137.98	143.66	134.22	154.68	174.95	163.22	146.48	166.66
Bigeye Tuna (Tambakol/ Bariles)	145.11	138.58	137.45	150.95	143.66	128.50	116.69	131.85	154.08	146.95	141.38	135.20	150.05
Grouper (Lapu-lapu)	163.88	178.19	175.46	184.73	182.11	171.24	347.27	170.70	187.17	192.05	171.53	176.29	190.05
Indian Mackerel (Alumahan)	85.99	86.04	88.35	91.34	91.04	85.16	94.14	100.34	100.21	94.39	86.02	87.96	97.16
Threadfin Bream (Bisugo)	135.42	131.53	126.99	135.80	140.63	125.67	135.42	136.07	134.77	131.69	133.38	133.21	133.23
Slipmouth (Sapsap)	61.96	68.04	67.48	61.94	68.37	68.66	65.38	64.20	74.43	73.36	65.16	68.53	73.87
Cavalla (Talakitok)	132.37	126.00	127.05	136.99	142.03	128.17	128.74	135.66	148.66	145.97	129.08	134.40	147.22
Fimbriated Sardines (Tunsoy)	26.96	29.72	37.93	34.24	29.98	35.85	39.11	42.48	36.97	42.60	28.36	32.50	39.85
Other Fisheries	85.58	83.71	89.37	88.78	87.93	74.08	86.34	90.86	94.59	85.18	84.54	80.05	89.11

Source: Philippine Statistics Authority

Table 10a. Growth Rates of Average Farmgate Prices of Crops  
 First Quarter 2019 to Second Quarter 2021  
 (in percent)

Subsector/ Commodity	2019-2020				2020-2021		January to June	
	Q1	Q2	Q3	Q4	Q1	Q2	2019-2020	2020-2021
Crops	-1.3	5.4	1.6	18.4	5.2	-1.1	2.0	1.9
Palay	-14.0	3.5	5.3	1.8	3.4	-8.0	-5.7	-2.6
Corn	-10.3	-9.9	-7.2	1.2	2.3	6.7	-10.1	3.9
Banana	7.1	16.9	15.5	17.8	8.6	-7.3	12.2	-0.1
Coconut	2.6	2.9	3.6	21.7	18.3	14.8	2.8	16.5
Mango	8.3	15.9	-16.2	-3.0	18.6	10.4	14.5	12.0
Sugarcane	-7.3	-9.1	25.4	-4.7	-6.3	-4.0	-7.4	-5.3
Pineapple	12.4	-8.0	-2.9	185.5	1.9	6.8	1.2	4.4
Cassava	25.1	33.6	-24.1	40.7	4.3	10.2	30.1	7.9
Rubber	-1.2	-28.2	-16.2	8.7	12.2	47.3	-21.3	35.9
Sweet Potato	19.8	15.8	12.2	18.3	3.0	-14.6	17.4	-7.6
Onion	68.6	115.1	38.4	28.8	-12.9	1.4	78.9	-10.3
Eggplant	10.9	6.1	-22.5	12.9	27.6	7.5	8.1	17.1
Coffee	-0.8	-10.0	-7.2	-5.1	-8.2	-0.2	-3.3	-6.3
Tobacco	8.4	-2.7	25.7	45.5	-0.3	-0.5	-0.3	-0.3
Abaca	0.5	0.4	-0.3	1.2	1.6	-1.1	0.4	0.02
Tomato	6.4	-17.2	-8.7	83.0	36.1	-7.7	-5.1	16.8
Potato	57.8	60.8	-1.8	6.2	9.2	-39.3	58.8	-14.1
Ampalaya	0.8	-1.2	-13.3	18.9	15.7	-4.9	-0.5	3.0
Cabbage	28.0	34.2	15.2	90.1	80.4	-39.4	30.5	14.7
Calamansi	7.0	-14.9	-4.1	-5.8	23.7	12.4	-6.8	17.6
Mongo	1.7	3.0	-4.6	-5.1	7.2	4.2	2.7	5.1
Cacao	3.9	7.2	5.6	-1.4	-5.6	-8.1	5.6	-6.9
Other Crops	7.4	2.1	1.1	47.0	19.3	-0.1	4.5	8.8

Source: Philippine Statistics Authority

Table 10b. Growth Rates of Average Farmgate Prices of Livestock and Poultry  
 First Quarter 2019 to Second Quarter 2021  
 (in percent)

Subsector/ Commodity	2019-2020				2020-2021		January to June	
	Q1	Q2	Q3	Q4	Q1	Q2	2019-2020	2020-2021
Livestock	-4.2	-0.7	4.9	28.8	44.4	46.9	-2.4	45.6
Hog	-7.0	-2.0	4.1	34.3	52.0	53.1	-4.6	52.6
Cattle	14.2	14.2	12.4	12.0	13.5	16.3	14.2	15.1
Carabao	11.7	10.4	9.3	10.6	10.3	16.1	11.0	13.5
Goat	1.2	-0.8	-1.0	0.4	10.4	13.6	0.2	12.1
Dairy	6.0	4.1	6.9	12.3	20.6	19.3	5.0	20.0
Poultry	15.3	15.8	9.2	9.6	19.6	11.1	15.5	15.3
Chicken	14.6	13.7	7.0	12.1	26.5	16.8	14.2	21.5
Duck	6.6	13.5	15.0	16.6	33.8	28.8	9.1	32.8
Chicken Eggs	17.8	20.1	13.0	2.9	3.9	-2.7	18.9	0.4
Duck Eggs	8.2	6.5	3.2	0.4	3.7	1.1	7.2	2.3

Source: Philippine Statistics Authority

Table 10c. Growth Rates of Average Farmgate Prices of Fisheries  
First Quarter 2019 to Second Quarter 2021  
(in percent)

Subsector/ Commodity	2019-2020				2020-2021		January to June	
	Q1	Q2	Q3	Q4	Q1	Q2	2019-2020	2020-2021
Fisheries	2.1	-3.3	-2.8	-1.6	6.6	10.7	-0.9	8.8
Milkfish	0.9	10.4	-9.0	-1.2	3.4	2.7	6.6	2.9
Tilapia	9.4	7.7	5.9	5.0	0.6	0.8	8.6	0.6
Tiger Prawn	-6.5	2.3	-18.1	-0.2	5.8	1.7	-1.2	3.2
Skipjack (Gulyasan)	-1.4	-13.9	-8.5	-13.1	6.2	24.5	-9.0	16.2
Roundscad (Galunggong)	8.9	5.9	3.7	8.6	20.7	17.5	6.9	18.9
Seaweed	0.4	-1.6	3.1	-22.7	6.6	-5.2	-0.6	0.7
Yellowfin Tuna (Tambakol/Bariles)	-0.9	-21.4	-14.0	-0.2	3.8	33.5	-13.0	19.5
Mudcrab	-0.3	8.2	-5.4	-10.7	27.1	-2.5	3.2	16.6
Frigate Tuna (Tulingan)	9.2	-3.0	-5.2	2.0	4.1	16.6	2.2	10.8
Big-eyed Scad (Matangbaka)	4.2	-0.01	0.2	8.2	5.5	13.7	2.1	9.5
Bali Sardinella (Tamban)	-12.5	-18.9	-2.6	-8.7	2.2	30.5	-17.0	21.0
Squid (Pusit)	9.2	0.4	0.4	0.7	0.9	5.8	4.4	3.4
Blue Crab (Alimasag)	-4.8	-15.2	-1.0	-7.3	-1.0	26.8	-10.3	13.8
Bigeye Tuna (Tambakol/ Bariles)	-1.0	-7.3	-15.1	-12.7	7.2	14.4	-4.4	11.0
Grouper (Lapu-lapu)	11.1	-3.9	97.9	-7.6	2.8	12.2	2.8	7.8
Indian Mackerel (Alumahan)	5.9	-1.0	6.6	9.9	10.1	10.8	2.3	10.5
Threadfin Bream (Bisugo)	3.8	-4.5	6.6	0.2	-4.2	4.8	-0.1	0.02
Slipmouth (Sapsap)	10.3	0.9	-3.1	3.6	8.9	6.8	5.2	7.8
Cavalla (Talakitok)	7.3	1.7	1.3	-1.0	4.7	13.9	4.1	9.5
Fimbriated Sardines (Tunsoy)	11.2	20.6	3.1	24.1	23.3	18.8	14.6	22.6
Other Fisheries	2.8	-11.5	-3.4	2.3	7.6	15.0	-5.3	11.3

Source: Philippine Statistics Authority

**VALUE OF PRODUCTION IN PHILIPPINE AGRICULTURE AND FISHERIES  
PHILIPPINE STATISTICS AUTHORITY**

**DENNIS S. MAPA, Ph.D.**

Undersecretary  
National Statistician and Civil Registrar General

**MACROECONOMIC ACCOUNTS SERVICE**

**VIVIAN R. ILARINA**

Assistant National Statistician

**AGRICULTURAL ACCOUNTS DIVISION**

**Manuela S. Nalugon**

(Supervising Statistical Specialist)  
Officer-in-Charge

**Reynante A. Santos**

Senior Statistical Specialist

**Joynabel S. Paraguison**

Statistical Specialist II

**Eden R. Maitem**

Statistical Specialist I

**Joly M. Navales**

Statistical Specialist I

**Danica L. Quebral**

Statistical Analyst

**Manelyn D. Galyano**

Statistical Analyst

For Inquiries:

## PHILIPPINE STATISTICS AUTHORITY

PSA Complex, East Avenue, Diliman, Quezon City, Philippines 1101

Tel. No. +63(2) 84626600 loc. 820 • Telefax No. +63(2) 84626600 loc. 839

E-mail address: [info@psa.gov.ph](mailto:info@psa.gov.ph) • [kmcd.staff@psa.gov.ph](mailto:kmcd.staff@psa.gov.ph)



Visit us on  
[www.psa.gov.ph](http://www.psa.gov.ph)



Like us on Facebook  
[/PhilippineStatisticsAuthority](https://www.facebook.com/PhilippineStatisticsAuthority)



Follow us on Twitter  
[@PSAgovph](https://twitter.com/PSAgovph)