



REPUBLIC OF THE PHILIPPINES

PHILIPPINE STATISTICS AUTHORITY

2021 Philippine National Health Accounts



The **Philippine National Health Accounts (PNHA)** Report
is an annual publication prepared by the Macroeconomic Accounts Service
of the PHILIPPINE STATISTICS AUTHORITY (PSA).

TERMS OF USE OF PSA PUBLICATIONS

The PSA reserves its exclusive right to reproduce all its publications in whatever form. Any part of this publication should not be reproduced, recopied, lent or repackaged for other parties for any commercial purposes without written permission from the PSA. Any part of this publication may only be reproduced for internal use of the recipient/customer company. Should any portion of the data in this publication are to be included in a report/article, the title of the publication and the PSA as publisher should be cited as the source of the data. Any information derived from the processing of data contained in this publication will not be the responsibility of PSA.

ISSN 1655-8936

Published by the
Philippine Statistics Authority
Eton Centris Cyberpod Three,
EDSA corner Quezon Avenue, Quezon City
Philippines

October 2022

The **Philippine National Health Accounts (PNHA)** Report is available in printed and electronic formats. For details, please contact us at (632) 8462-6600 loc 839 or at info@psa.gov.ph.

TABLE OF CONTENTS

	Page
Foreword	
Highlights	1-2
Discussion of Estimates	3-11
Statistical Tables	
Tables 1 - 3 Current Health Expenditure by Revenues of Health Financing Scheme, 2014 – 2021	13
Tables 4 - 6 Current Health Expenditure by Institutional Unit Providing Revenues to Financing Scheme, 2014 - 2021	14
Tables 7 - 9 Current Health Expenditure by Financing Agent, 2014 - 2021	15
Tables 10 - 12 Current Health Expenditure by Health Care Financing Scheme, 2014 – 2021	16
Tables 13 - 15 Current Health Expenditure by Health Care Provider, 2014 - 2021	17
Tables 16 - 18 Current Health Expenditure by Factor of Health Care Provision, 2014 – 2021	18
Tables 19 - 21 Health Capital Formation Expenditure, 2014 - 2021	19
Tables 22 - 24 Current Health Expenditure by Health Care Function, 2014 - 2021	20
Tables 25 - 27 Current Health Expenditure by Income Quintile Group, 2014 - 2021	21
Tables 28 - 30 Current Health Expenditure by Disease Group, 2014 - 2021	22
Tables 31 - 33 Current Health Expenditure by Age and Sex Group, 2014 - 2021	23
Tables 34 - 36 Current Health Expenditure by Region, 2014 - 2021	24
Tables 37 - 39 Total Health Expenditure, 2014 - 2021	25
Tables 40 - 42 Derived Indicators	26
Tables 43 – 44 Current Health Expenditure Per Capita, 2014 - 2021	27
Tables 45 – 46 Total Health Expenditure, Backcasted, 1991 – 2013	28
Technical Notes	29-43

FOREWORD

The Philippine National Health Accounts (PNHA) is a framework for the compilation of information on health expenditure of the country in a specific year. Although the Philippines started PNHA compilation way back in early 1990s, the Philippine Statistics Authority (PSA) started to adopt the internationally agreed framework, the 2011 System of Health Accounts (SHA 2011), in 2016.

SHA 2011 framework resulted from the collaborative effort among the Organization for Economic Co-operation and Development, World Health Organization, and the European Commission. It organizes health care accounting framework around a tri-axial system with three main classifications: health care functions (categories of health care consumption), providers (the type of health care services delivered), and financing schemes (the ways how health care goods and services are funded). Moreover, SHA 2011 was developed to include additional classifications: beneficiaries – classifications detailing how health care is consumed by population groups (by age, disease burden, income quintile, etc.), factors of provision – elaborations of the inputs used by providers to deliver health care services, and revenues of financing schemes – outlines the sources of funds for each financing scheme. SHA 2011 also includes a classification on capital formation, which compiles investments by health care providers as part of the extended framework.

The “2021 Philippine National Health Accounts”, which is the third publication on PNHA based on SHA 2011, contains key findings presented in tables, graphs, and analyses about health care financing, provision, and consumption in the Philippines for years 2019 to 2021. It also provides discussion on SHA 2011 Framework with concepts and definitions, as well as information on data sources and estimation procedures.

This publication is a product of the Satellite Accounts Division, Macroeconomic Accounts Service of PSA. Major data inputs, on top of PSA data, are provided by the following source agencies: Department of Health (DOH), Department of Budget and Management (DBM), Commission on Audit (COA), National Economic and Development Authority (NEDA), Bureau of Local Government Finance (BLGF), Philippine Health Insurance Corporation (PhilHealth), Employees' Compensation Commission (ECC), Social Security System (SSS), Government Service Insurance System (GSIS), Insurance Commission (IC), Association of Health Maintenance Organizations of the Philippines, Inc. (AHMOPI), Securities and Exchange Commission (SEC), Philippine Charity Sweepstakes Office (PCSO), and Philippine Amusement and Gaming Corporation (PAGCOR)

The PSA hopes that policymakers, planners, researchers, and the general public will find this publication useful in crafting plans, policies, projects, and programs that would benefit the Philippine health care sector and more importantly the health of the citizenry. We also encourage concerned users of this publication to give comments and suggestions for the improvement of this report.

DENNIS S. MAPA, Ph.D.

Undersecretary

National Statistician and Civil Registrar General

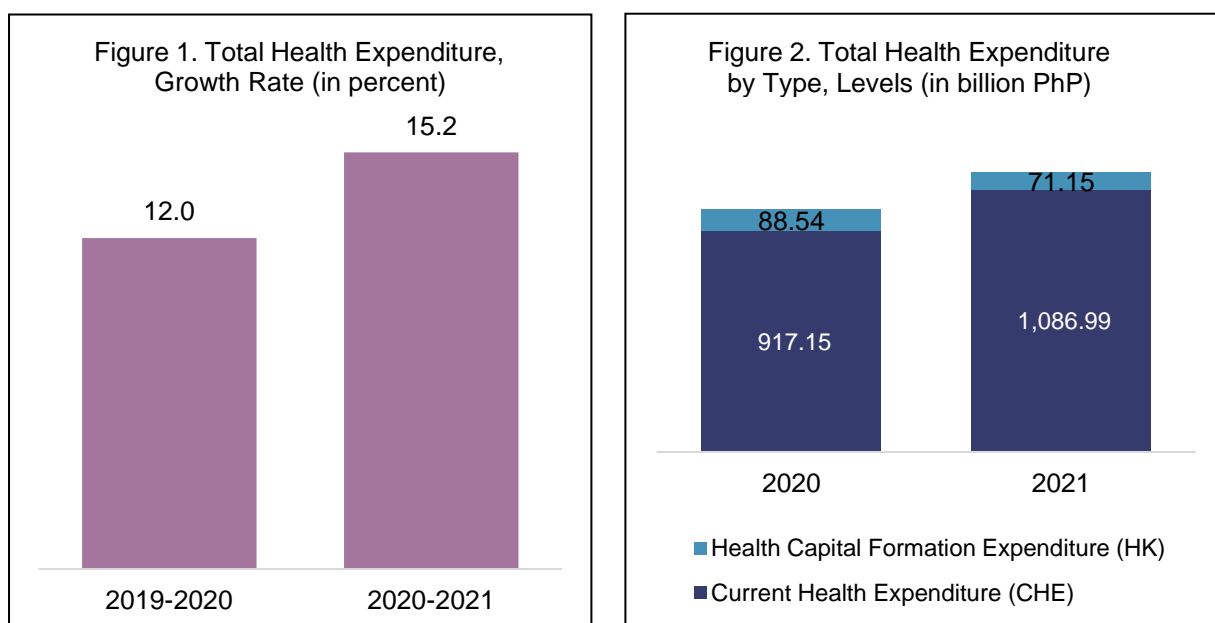
Quezon City, Philippines

October 2022

HIGHLIGHTS

The country's Current Health Expenditure (CHE) reached PhP 1.09 trillion in 2021, 18.5 percent higher compared with PhP 917.15 billion in 2020. This increment was faster than the 12.8 percent registered in the previous year. Meanwhile, Gross Health Capital Formation Expenditure (HK) amounted to PhP 71.15 billion in 2021, lower by -19.6 percent compared with PhP 88.54 billion in 2020.

The Total Health Expenditure (THE), which comprised of CHE (93.9%) and Health Capital Formation Expenditure (6.1%), recorded PhP 1.16 trillion in 2021. It grew by 15.2 percent from PhP 1.01 trillion in 2020. (Tables 37 to 39, and Figures 1 and 2)



The share of THE to the Gross Domestic Product (GDP) at current prices was 6.0 percent in 2021. (Table 40)

Per Capita Current Health Expenditure, 2020 and 2021

On a per capita basis, health spending was at PhP 9,839.23 in 2021, higher by 17.0 percent compared with the PhP 8,411.52 expenditure in 2020. (Tables A, 43, and 44)

Table A. Per Capita Current Health Expenditure: 2020–2021

ITEM	LEVEL		GROWTH RATE (%)
	2020	2021	2020-2021
Per Capita Current Health Expenditure (in Philippine pesos, at current prices)	8,411.52	9,839.23	17.0

Current Health Expenditure by Health Care Financing Scheme

Health spending financed through government schemes and compulsory contributory health care financing schemes had the largest among sources of health financing in the country, amounting to PhP 546.64 billion or 50.3 percent of total CHE in 2021. Household out-of-pocket payment (OOP) came second at PhP 451.00 billion (41.5%), followed by voluntary health care payment schemes which contributed PhP 89.35 billion (8.2%). (Tables 10 and 12)

Current Health Expenditure by Health Care Provision

Among healthcare providers, bulk of spending were spent on hospitals (41.7%), followed by retailers and other providers of medical goods (26.2%) and providers of health care system administration and financing (14.8%). (Table 15)

Current Health Expenditure by Health Care Consumption

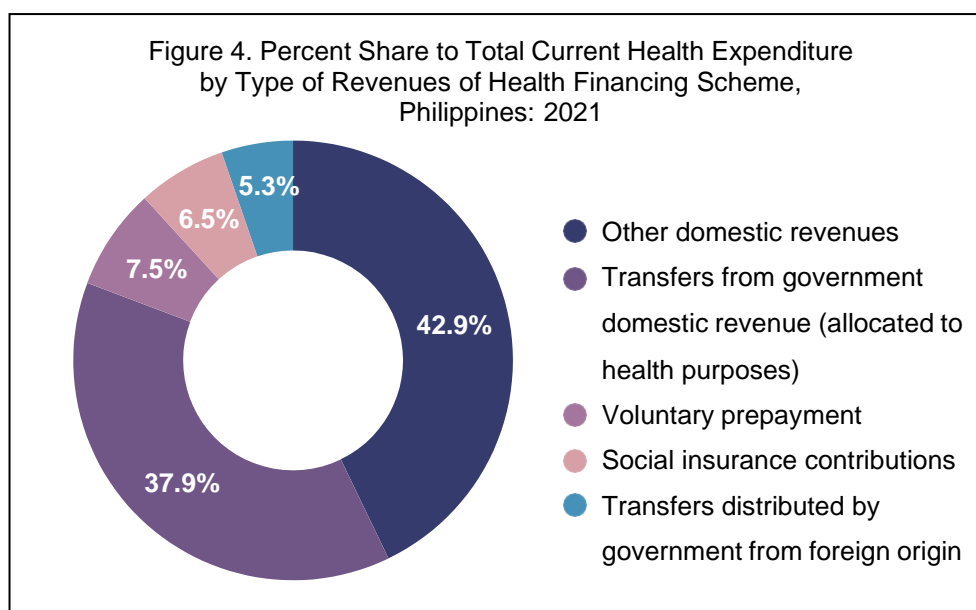
In terms of health care functions, curative care received the largest amount of CHE amounting to PhP 503.16 billion or 46.3 percent share. Among income quintiles, health spending of the fifth quintile (top quintile) was the highest at PhP 379.76 billion or 34.9 percent share. By disease group, infectious and parasitic diseases contributed 27.3 percent, followed by noncommunicable diseases with 24.2 percent share. While the former accounted for PhP 296.54 billion, the latter summed up to PhP 262.96 billion. The female population accounted for more than half (52.2%) of total CHE at PhP 567.15 billion. Among regions, the National Capital Region registered the highest health spending at PhP 180.06 billion or 16.6 percent share to the total health expenditure, followed by Central Luzon (9.6%) and Western Visayas (5.9%). (Tables 22, 24, 25, 27, 28, 30, 31, 33, 34, and 36)

DISCUSSION OF ESTIMATES

Financing of Health Care

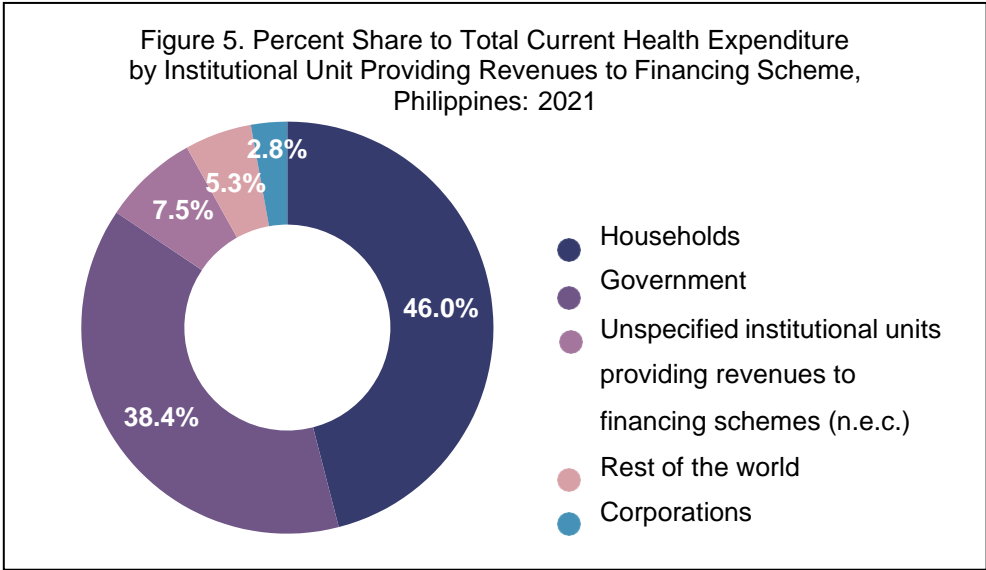
Type of Revenues of Health Financing Scheme

Among the types of revenues of health financing schemes, other domestic revenues, which consist of revenues from households and corporations, accounted for PhP 465.83 billion or 42.9 percent of total CHE in 2021. This was followed by transfers from government domestic revenue (allocated to health purposes) with PhP 411.69 billion or 37.9 percent of the total CHE. Meanwhile, voluntary prepayment and social insurance contributions shared 7.5 percent and 6.5 percent, respectively. Transfers distributed by government from foreign origin recorded the lowest among types of revenues with the amount of PhP 57.21 billion or about 5.3 percent. (Tables 1 and 3, and Figure 4)



Institutional Unit Providing Revenues to Financing Scheme

Households were the largest provider accounting for PhP 499.82 billion or 46.0 percent share to the total current health expenditure. This was followed by government spending with PhP 417.91 billion or 38.4 percent share. Health funds from households increased by 9.3 percent, while funds from the government increased by 16.9 percent. (Tables 4 to 6, and Figure 5)

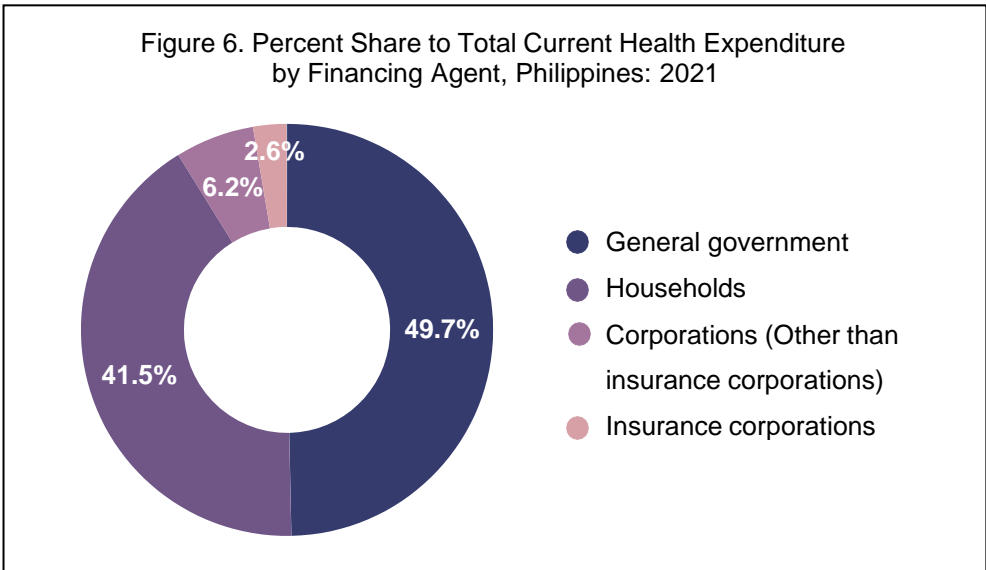


Financing Agent

In terms of financing agents or institutional units that manage health financing schemes, the general government accounted for almost half (49.7%) of the total CHE. Health spending by the general government amounted to PhP 539.79 billion, which grew by 30.5 percent from PhP 413.58 billion in 2020. This includes the spending of Department of Health (DOH) which accounted for PhP 256.60 billion and Social Health Insurance Agency (i.e., PhilHealth) with PhP 148.01 billion health spending.

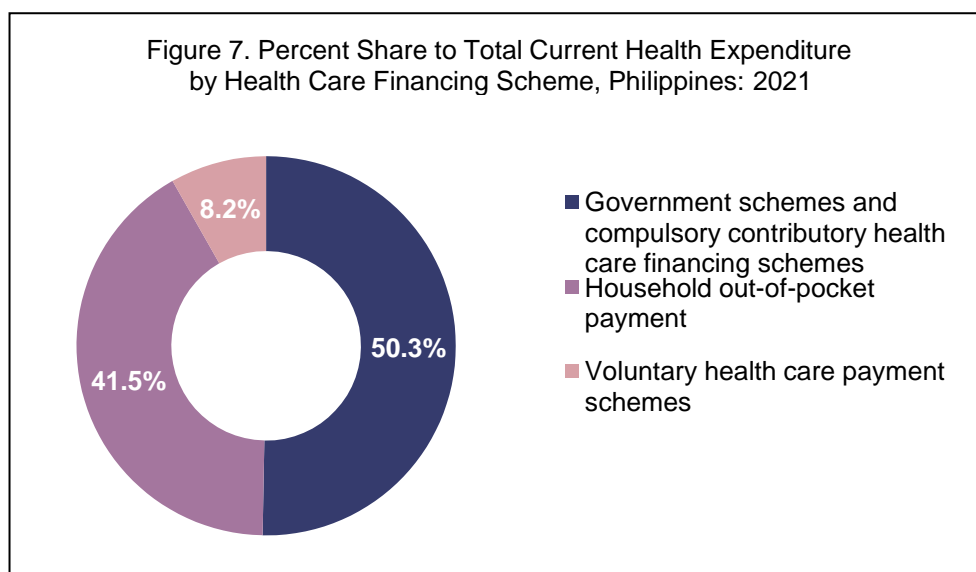
Meanwhile, households spending contributed PhP 451.00 billion or 41.5 percent share. This marked an increase of 9.2 percent from PhP 412.97 billion in 2020.

Corporations (other than insurance corporations) shared 6.2 percent in 2021, amounting to PhP 67.47 billion. Insurance corporations accounted for 2.6 percent or PhP 28.64 billion. Corporations and insurance corporations grew by 3.1 percent and 13.9 percent, respectively. (Tables 7 to 9, and Figure 6)



Health Care Financing Scheme

Government schemes and compulsory contributory health care financing schemes amounted to PhP 546.64 billion or 50.3 percent of total CHE in 2021. This was followed by household out-of-pocket payment with 41.5 percent share, amounting to PhP 451.00 billion. Meanwhile, voluntary health care payment schemes accounted for 8.2 percent of total CHE or PhP 89.35 billion. (Table 10 and 12, and Figure 7)

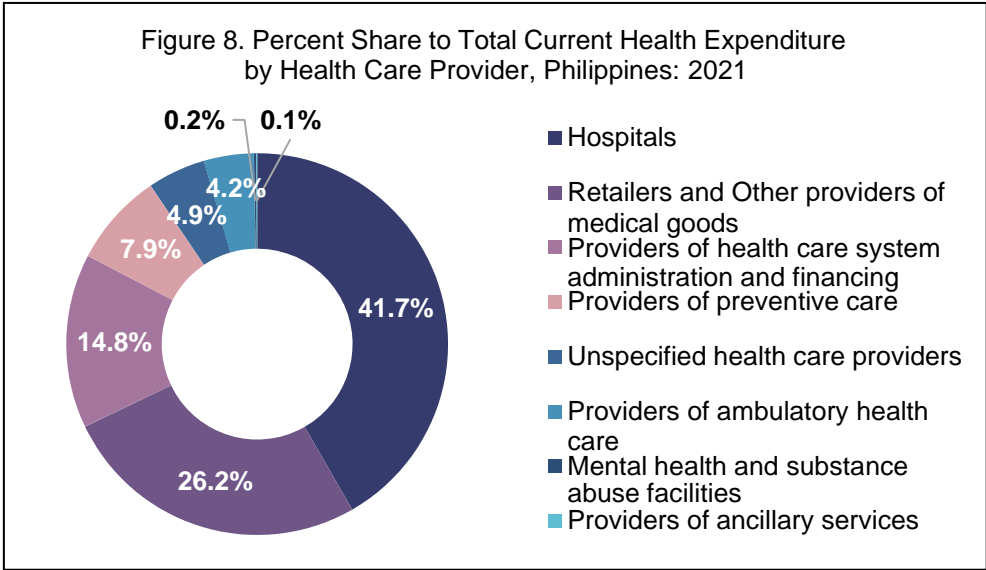


Provision of Health Care

Health Care Provider

In 2021, hospitals posted the highest share to the total CHE accounting for 41.7 percent. This was equivalent to PhP 453.23 billion, higher by 12.9 percent compared with PhP 401.62 billion in 2020. Among the hospitals, public and private general hospitals accounted for PhP 196.42 billion and PhP 146.52 billion, respectively.

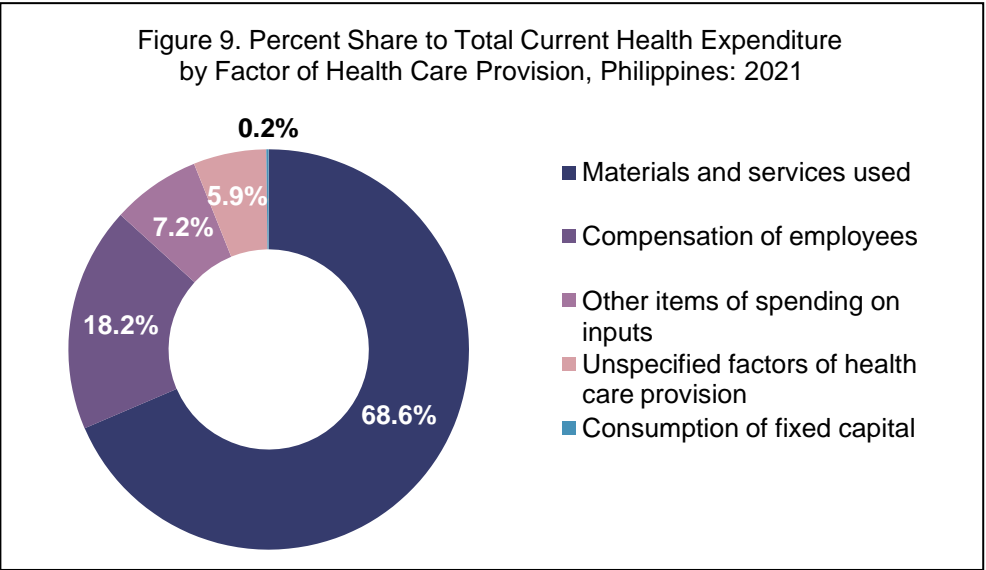
Retailers and other providers of medical goods were the second highest contributor with spending of PhP 284.70 billion or 26.2 percent share. This was followed by the health expenditure for providers of health care system administration and financing, and providers of preventive care with shares of 14.8 percent and 7.9 percent, respectively. (Tables 13 to 15, and Figure 8)



Factor of Health Care Provision

Expenditures for materials and services used in providing health care remained to have the highest share to the total CHE in 2021 with 68.6 percent. This item includes health care services, health care goods, and other materials and services used, amounting to a total of PhP 745.26 billion.

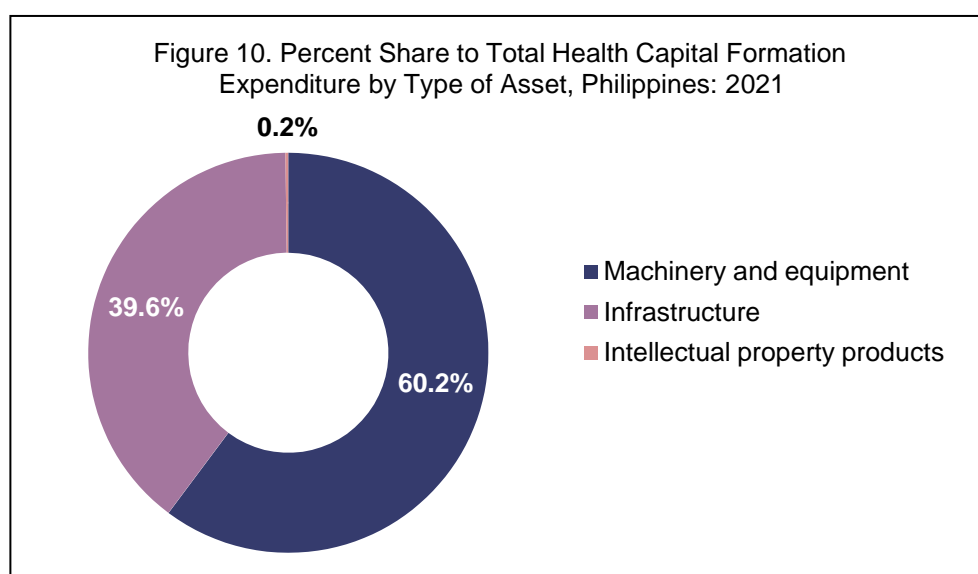
It was followed by compensation of employees at PhP 197.65 billion (18.2%) which grew faster by 23.9 percent in 2021. On the other hand, only taxes posted a decline of -51.7 percent in 2021 from its 52.1 percent growth in 2020. (Tables 16 to 18, and Figure 9)



Health Capital Formation Expenditure

Health capital formation expenditures (HK) includes those reported by the national government (domestic revenue-based and foreign-assisted), the local government, the government corporations (Philippine Amusement and Gaming Corporation or PAGCOR and Philippine Charity Sweepstakes Office or PCSO), and estimated health expenditures from private establishments.

Health capital formation on machinery and equipment, infrastructure, and intellectual property products used in providing health care services amounted to PhP 42.84 billion (60.2%), PhP 28.14 billion (39.6%), and PhP 165.15 million (0.2%), respectively. The total health capital formation expenditure amounted to PhP 71.15 billion in 2021. It posted a decline of -19.6 percent from the previous year's level of PhP 88.54 billion. (Tables 19 to 21, and Figure 10)



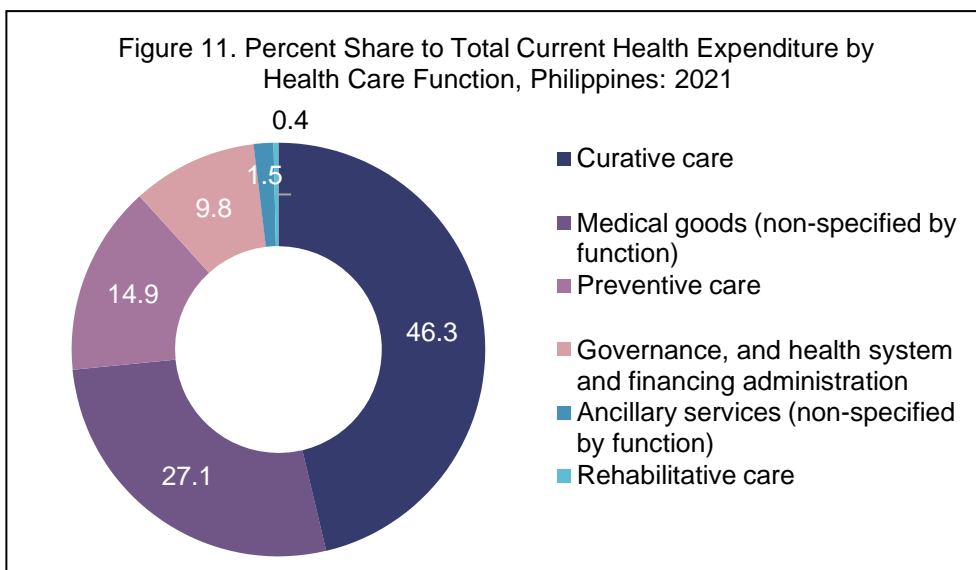
Consumption of Health Care

Health Care Function

Among health care functions, curative care recorded the highest share to total CHE in 2021 at 46.3 percent share to the total. The health spending in curative care amounted to PhP 503.16 billion, higher by 10.5 percent from PhP 455.27 billion recorded in 2020.

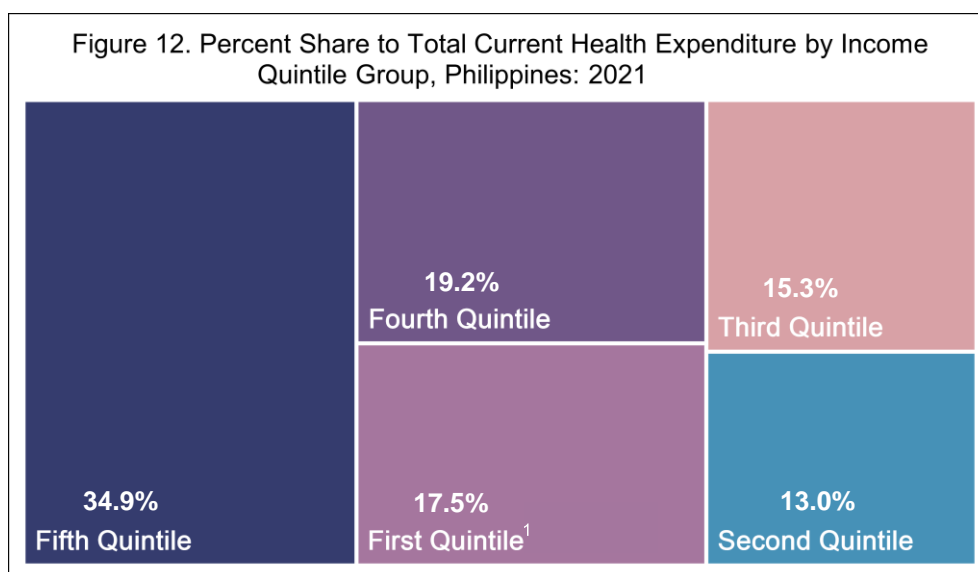
Medical goods (non-specified by function) accounted for the second largest share (27.1%) valued at PhP 295.09 billion. It grew by 9.4 percent from PhP 269.78 billion posted in 2020.

Preventive care and Governance, and health system and financing administration contributed PhP 161.45 billion (14.9%) and PhP 106.40 billion (9.8%), respectively, in 2021. (Tables 22 to 24, and Figure 11)



Income Quintile

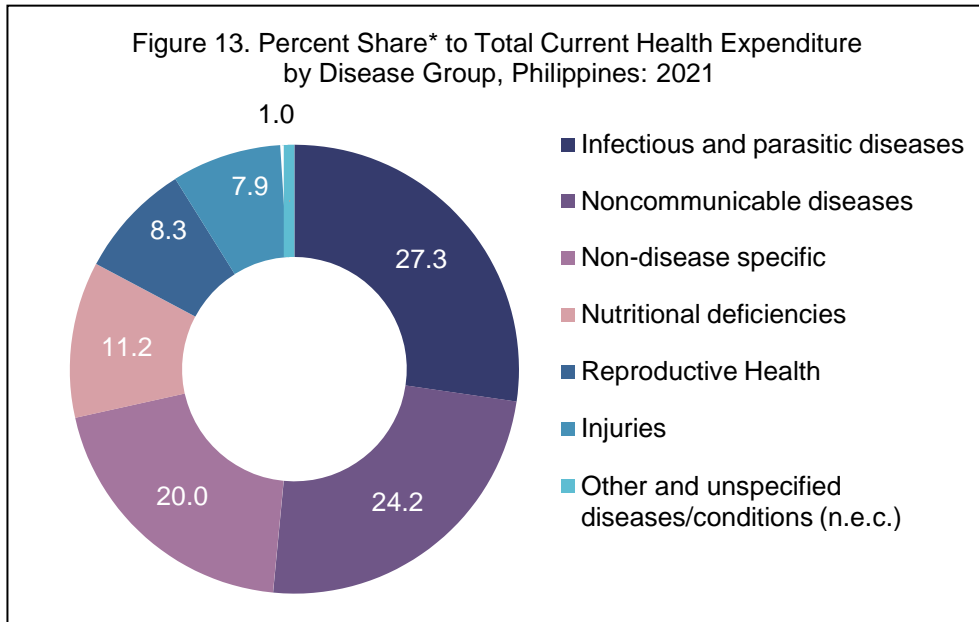
In 2021, the fifth quintile (top quintile) reported the highest health spending of PhP 379.76 billion or 34.9 percent of total CHE. It was 16.6 percent higher compared with PhP 325.74 billion health spending in 2020. It was followed by the fourth quintile with 19.2 percent share amounting to PhP 208.78 billion. The second quintile registered the lowest health spending of PhP 141.49 billion or 13.0 percent share. (Tables 25 to 27, and Figure 12)



¹ Bottom quintile

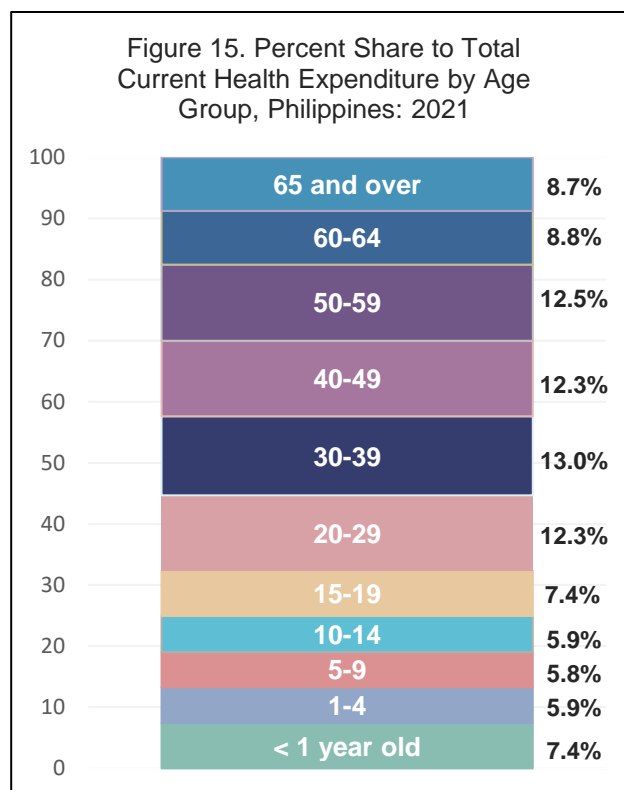
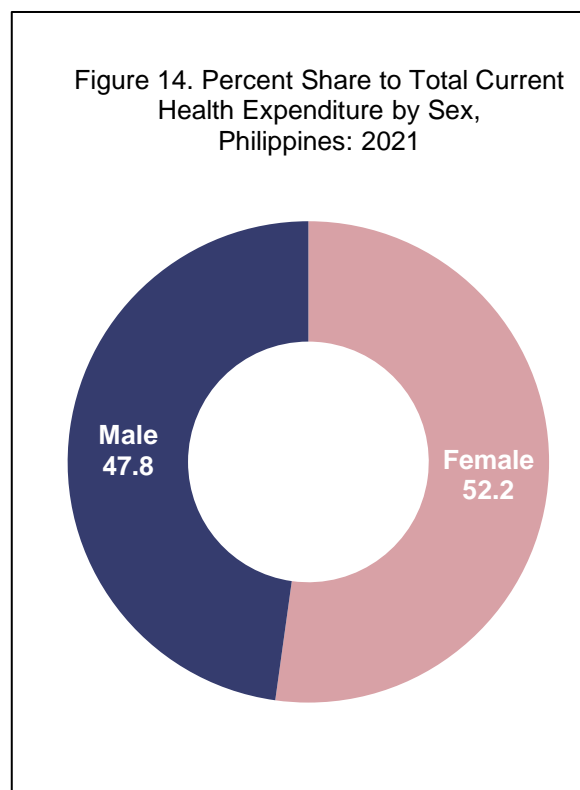
Disease Group

Infectious and parasitic diseases had the highest share to total of CHE in 2021 at PhP 296.54 billion or 27.3 percent share. This represents a two-fold increase from the 2020 level of PhP 133.22 billion. Noncommunicable diseases came in second, amounting to PhP 262.96 billion or 24.2 percent share. Non-disease specific ranked third with PhP 217.62 billion or 20.0 percent share. Health spending on other diseases/conditions jointly accounted for the remaining 28.5 percent of the total CHE. (Tables 28 and 30, and Figure 13)



*Details may not add up to 100% due to rounding

Age-Sex Group

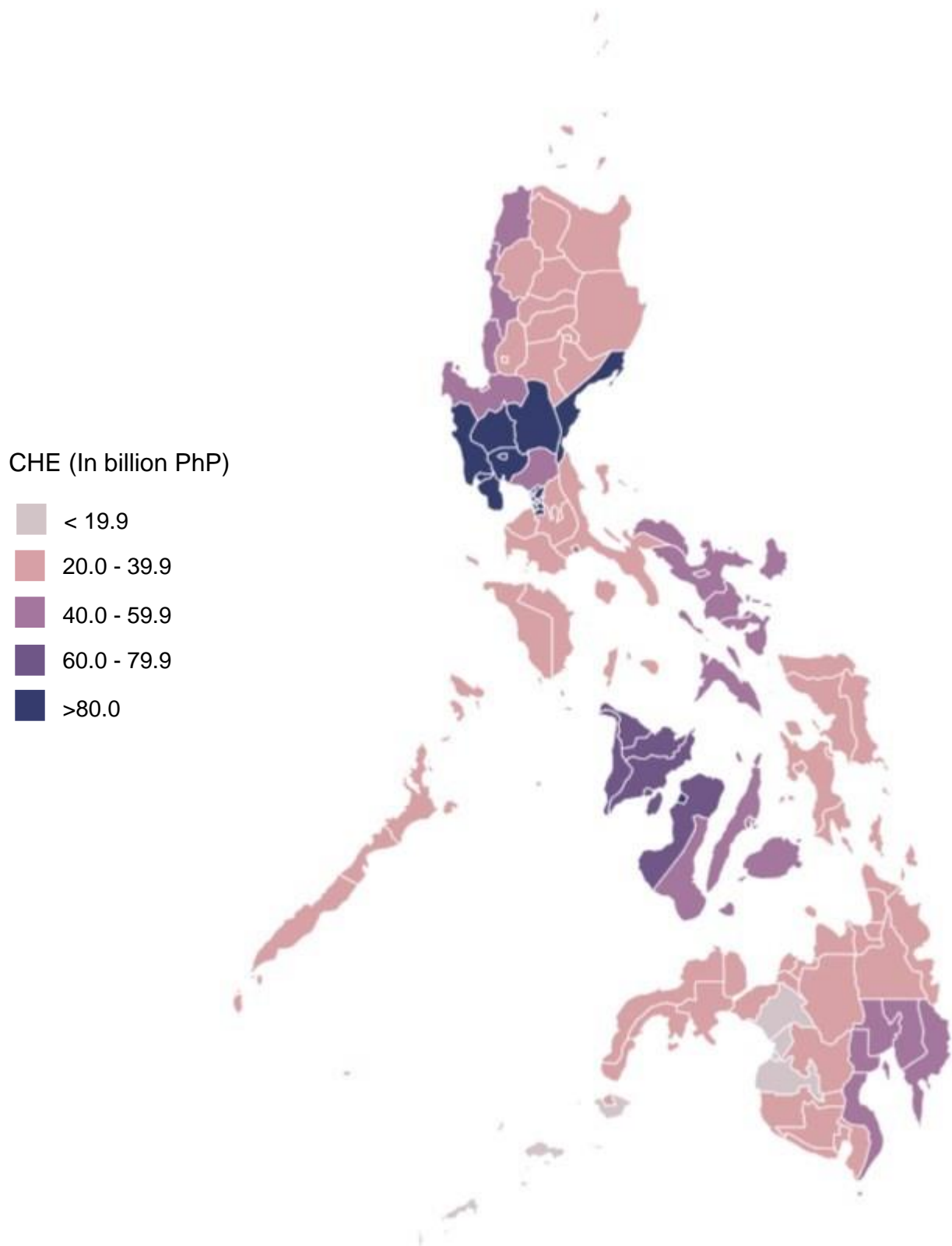


In 2021, population ages 30 to 39 years had the highest health care spending of PhP 140.90 billion (13.0%). Of this amount, PhP 61.21 billion was accounted for males and PhP 79.68 billion for females. Meanwhile, by sex group, female population registered higher share of PhP 567.15 billion (52.2%) compared to male population with PhP 519.84 billion (47.8%). (Tables 31 and 33, and Figure 14)

Region

In 2021, the National Capital Region (NCR) maintained having the highest share on health spending, posting PhP 180.06 billion or 16.6 percent share. BARMM, on the other hand, had the least amount of health spending of PhP 15.92 billion or 1.5 percent share. Except for BARMM, Cagayan Valley, and CAR, all regions posted positive growths in 2021. (Tables 34 to 36, and Figure 16)

Figure 16. Current Health Expenditure by Region, Philippines: 2021



STATISTICAL TABLES

Table 1
CURRENT HEALTH EXPENDITURE BY REVENUES OF HEALTH FINANCING SCHEME, 2014-2021
Levels (in million PHP)

Type of Revenues of Health Financing Scheme	2014	2015	2016	2017	2018	2019 ^f	2020 ^g	2021
Transfers from government domestic revenue (allocated to health purposes)	118,983.55	153,724.70	169,839.75	197,516.68	234,070.12	277,990.10	354,608.41	411,687.07
Internal transfers and grants	118,983.55	153,724.70	169,839.75	197,516.68	234,070.12	277,990.10	354,608.41	411,687.07
Transfers distributed by government from foreign origin	7,278.26	7,832.37	13,559.66	14,386.10	2,249.62	3,300.79	6,831.05	57,207.31
Social insurance contributions	47,854.54	51,060.04	53,171.31	47,971.85	46,543.09	52,205.02	54,716.06	70,990.55
Social insurance contributions from employees	14,607.85	14,141.99	13,755.64	16,699.51	15,270.35	17,274.52	11,910.19	23,472.53
Social insurance contributions from employers	13,334.88	12,475.68	12,452.16	12,175.47	12,229.66	14,184.51	10,200.50	22,150.45
Social insurance contributions from self-employed	19,274.70	19,412.67	19,460.29	17,019.01	18,678.52	20,724.65	32,582.86	25,340.61
Other social insurance contributions	637.12	5,029.69	7,503.23	2,077.87	364.55	21.34	22.51	26.96
Voluntary prepayment	49,418.33	42,407.31	48,189.83	56,425.88	62,902.04	70,141.49	75,778.70	81,278.08
Other domestic revenues	265,532.23	288,557.22	313,701.43	339,413.68	376,407.70	409,566.61	425,218.96	465,828.64
Revenues from households	256,156.99	278,197.46	302,175.91	328,827.96	364,241.10	396,736.85	412,973.35	451,001.46
Revenues from corporations	9,375.24	10,359.76	11,525.52	10,585.72	12,166.60	12,829.77	12,245.60	14,827.18
TOTAL CURRENT HEALTH EXPENDITURE	489,066.90	543,581.63	598,461.98	655,714.20	722,172.57	813,204.01	917,153.16	1,086,991.64

Table 2
CURRENT HEALTH EXPENDITURE BY REVENUES OF HEALTH FINANCING SCHEME, 2014-2021
Growth rates (in percent)

Type of Revenues of Health Financing Scheme	2014-15	2015-16	2016-17	2017-18	2018-19 ^f	2019-20 ^g	2020-21
Transfers from government domestic revenue (allocated to health purposes)	29.2	10.5	16.3	18.5	18.8	27.6	16.1
Internal transfers and grants	29.2	10.5	16.3	18.5	18.8	27.6	16.1
Transfers distributed by government from foreign origin	7.6	73.1	6.1	-84.4	46.7	107.0	737.5
Social insurance contributions	6.7	4.1	-9.8	-3.0	12.2	4.8	29.7
Social insurance contributions from employees	-3.2	-2.7	21.4	-8.6	13.1	-31.1	97.1
Social insurance contributions from employers	-6.4	-0.2	-2.2	0.4	16.0	-28.1	117.2
Social insurance contributions from self-employed	0.7	0.2	-12.5	9.8	11.0	57.2	-22.2
Other social insurance contributions	689.4	49.2	-72.3	-82.5	-94.1	5.5	19.8
Voluntary prepayment	-14.2	13.6	17.1	11.5	11.5	8.0	7.3
Other domestic revenues	8.7	8.7	8.2	10.9	8.8	3.8	9.6
Other revenues from households	8.6	8.6	8.8	10.8	8.9	4.1	9.2
Other revenues from corporations	10.5	11.3	-8.2	14.9	5.5	-4.6	21.1
TOTAL CURRENT HEALTH EXPENDITURE	11.1	10.1	9.6	10.1	12.6	12.8	18.5

Table 3
CURRENT HEALTH EXPENDITURE BY REVENUES OF HEALTH FINANCING SCHEME, 2014-2021
Percent share to total (in percent)

Type of Revenues of Health Financing Scheme	2014	2015	2016	2017	2018	2019 ^f	2020 ^g	2021
Transfers from government domestic revenue (allocated to health purposes)	24.3	28.3	28.4	30.1	32.4	34.2	38.7	37.9
Internal transfers and grants	24.3	28.3	28.4	30.1	32.4	34.2	38.7	37.9
Transfers distributed by government from foreign origin	1.5	1.4	2.3	2.2	0.3	0.4	0.7	5.3
Social insurance contributions	9.8	9.4	8.9	7.3	6.4	6.4	6.0	6.5
Social insurance contributions from employees	3.0	2.6	2.3	2.5	2.1	2.1	1.3	2.2
Social insurance contributions from employers	2.7	2.3	2.1	1.9	1.7	1.7	1.1	2.0
Social insurance contributions from self-employed	3.9	3.6	3.3	2.6	2.6	2.5	3.6	2.3
Other social insurance contributions	0.1	0.9	1.3	0.3	0.1	0.0	0.0	0.0
Voluntary prepayment	10.1	7.8	8.1	8.6	8.7	8.6	8.3	7.5
Other domestic revenues	54.3	53.1	52.4	51.8	52.1	50.4	46.4	42.9
Other revenues from households	52.4	51.2	50.5	50.1	50.4	48.8	45.0	41.5
Other revenues from corporations	1.9	1.9	1.9	1.6	1.7	1.6	1.3	1.4
TOTAL CURRENT HEALTH EXPENDITURE	100.0	100.0	100.0	100.0	100.0	100.0	100.0	100.0

Source: Philippine Statistics Authority

Table 4
CURRENT HEALTH EXPENDITURE BY INSTITUTIONAL UNIT PROVIDING REVENUES TO FINANCING SCHEME, 2014-2021
Levels (in million PhP)

Institutional Unit Providing Revenues to Financing Scheme	2014	2015	2016	2017	2018	2019 ^f	2020 ^e	2021
Government	123,302.88	157,632.98	173,568.98	200,445.44	237,133.93	281,827.14	357,572.74	417,914.41
Corporations	19,027.90	23,956.85	27,751.68	21,910.29	21,697.01	23,198.53	19,504.33	30,776.75
Households	290,039.62	311,752.12	335,391.84	362,546.47	398,189.98	434,736.05	457,466.47	499,815.10
Rest of the world	7,278.26	7,832.37	13,559.66	14,386.10	2,249.62	3,300.79	6,831.09	57,207.31
Bilateral donors ¹	2,458.39	4,323.72	5,152.26	7,341.70	960.74	829.08	833.02	5,720.30
Multilateral donors ²	4,819.87	3,508.65	8,407.40	7,044.40	1,288.87	2,471.71	5,998.07	51,487.00
Unspecified institutional units providing revenues to financing schemes (n.e.c.)	49,418.24	42,407.31	48,189.83	56,425.88	62,902.04	70,141.49	75,778.64	81,278.08
TOTAL CURRENT HEALTH EXPENDITURE	489,066.90	543,581.63	598,461.98	655,714.20	722,172.57	813,204.01	917,153.16	1,086,991.64

Table 5
CURRENT HEALTH EXPENDITURE BY INSTITUTIONAL UNIT PROVIDING REVENUES TO FINANCING SCHEME, 2014-2021
Growth rates (in percent)

Institutional Unit Providing Revenues to Financing Scheme	2014-15	2015-16	2016-17	2017-18	2018-19 ^e	2019-20 ^e	2020-21
Government	27.8	10.1	15.5	18.3	18.8	26.9	16.9
Corporations	25.9	15.8	-21.0	-1.0	6.9	-15.9	57.8
Households	7.5	7.6	8.1	9.8	9.2	5.2	9.3
Rest of the world	7.6	73.1	6.1	-84.4	46.7	107.0	737.5
Bilateral donors ¹	75.9	19.2	42.5	-86.9	-13.7	0.5	586.7
Multilateral donors ²	-27.2	139.6	-16.2	-81.7	91.8	142.7	758.4
Unspecified institutional units providing revenues to financing schemes (n.e.c.)	-14.2	13.6	17.1	11.5	11.5	8.0	7.3
TOTAL CURRENT HEALTH EXPENDITURE	11.1	10.1	9.6	10.1	12.6	12.8	18.5

Table 6
CURRENT HEALTH EXPENDITURE BY INSTITUTIONAL UNIT PROVIDING REVENUES TO FINANCING SCHEME, 2014-2021
Percent share to total (in percent)

Institutional Unit Providing Revenues to Financing Scheme	2014	2015	2016	2017	2018	2019 ^f	2020 ^e	2021
Government	25.2	29.0	29.0	30.6	32.8	34.7	39.0	38.4
Corporations	3.9	4.4	4.6	3.3	3.0	2.9	2.1	2.8
Households	59.3	57.4	56.0	55.3	55.1	53.5	49.9	46.0
Rest of the world	1.5	1.4	2.3	2.2	0.3	0.4	0.7	5.3
Bilateral donors ¹	0.5	0.8	0.9	1.1	0.1	0.1	0.1	0.5
Multilateral donors ²	1.0	0.6	1.4	1.1	0.2	0.3	0.7	4.7
Unspecified institutional units providing revenues to financing schemes (n.e.c.)	10.1	7.8	8.1	8.6	8.7	8.6	8.3	7.5
TOTAL CURRENT HEALTH EXPENDITURE	100.0	100.0	100.0	100.0	100.0	100.0	100.0	100.0

¹ Germany, Japan, Korea, Spain and United States (USAID)

² AsDB, EU Institutions, Global Fund, UNAIDS, UNDP, UNFPA, UNICEF, WHO, World Bank (except for IDA + IBRD), other and unspecified multilateral donors

Source: Philippine Statistics Authority

Table 7
CURRENT HEALTH EXPENDITURE BY FINANCING AGENT, 2014-2021
Levels (in million PhP)

Financing Agent	2014	2015	2016	2017	2018	2019 ¹	2020 ¹	2021
General government	174,116.43	212,617.11	236,570.72	259,874.64	282,180.30	332,068.31	413,579.61	539,788.19
Central government	53,998.00	68,139.52	83,260.66	99,128.22	102,650.65	120,447.81	185,831.20	290,132.08
Department of Health	40,442.10	51,514.36	67,245.84	79,985.25	77,245.20	91,095.43	152,773.09	256,600.00
Other ministries and public units (belonging to central government)	13,555.90	16,625.16	16,014.82	19,142.97	25,405.45	29,352.38	33,058.11	33,532.08
State/Regional/Local government	37,748.39	39,026.68	43,360.04	47,650.88	59,691.58	70,278.75	92,731.25	101,578.87
Social security agency	82,370.05	105,450.91	109,950.03	113,095.54	119,838.07	141,341.75	135,017.16	148,077.24
Social Health Insurance Agency (PHIC)	82,342.66	105,422.46	109,912.72	113,061.95	119,806.60	141,308.93	134,990.93	148,006.61
Other social security agency (GSIS, SSS)	27.39	28.45	37.31	33.59	31.48	32.82	26.23	70.63
Insurance corporations	6,935.52	10,138.94	11,044.46	12,950.62	14,110.16	18,283.29	25,141.11	28,637.98
Commercial insurance companies	6,935.52	10,138.94	11,044.46	12,950.62	14,110.16	18,283.29	25,141.11	28,637.98
Corporations (Other than insurance corporations)	51,857.96	42,628.13	48,670.89	54,060.98	61,641.00	66,115.56	65,459.05	67,467.28
Health management and provider corporations	42,482.72	32,268.38	37,145.37	43,475.27	48,791.88	51,858.19	50,637.64	52,640.10
Corporations (Other than providers of health services)	9,375.24	10,359.76	11,525.52	10,585.72	12,849.12	14,257.37	14,821.41	14,827.18
Households	256,156.99	278,197.46	302,175.91	328,827.96	364,241.10	396,736.85	412,973.39	451,001.46
Rest of the World								96.73
TOTAL CURRENT HEALTH EXPENDITURE	489,066.90	543,581.63	598,461.98	655,714.20	722,172.57	813,204.01	917,153.16	1,086,991.64

Table 8
CURRENT HEALTH EXPENDITURE BY FINANCING AGENT, 2014-2021
Growth rates (in percent)

Financing Agent	2014-15	2015-16	2016-17	2017-18	2018-19 ¹	2019-20 ¹	2020-21
General government	22.1	11.3	9.9	8.6	17.7	24.5	30.5
Central government	26.2	22.2	19.1	3.6	17.3	54.3	56.1
Department of Health	27.4	30.5	18.9	-3.4	17.9	67.7	68.0
Other ministries and public units (belonging to central government)	22.6	-3.7	19.5	32.7	15.5	12.6	1.4
State/Regional/Local government	3.4	11.1	9.9	25.3	17.7	31.9	9.5
Social security agency	28.0	4.3	2.9	6.0	17.9	-4.5	9.7
Social Health Insurance Agency (PHIC)	28.0	4.3	2.9	6.0	17.9	-4.5	9.6
Other social security agency (GSIS, SSS)	3.9	31.2	-10.0	-6.3	4.3	-20.1	169.3
Insurance corporations	46.2	8.9	17.3	9.0	29.6	37.5	13.9
Commercial insurance companies	46.2	8.9	17.3	9.0	29.6	37.5	13.9
Corporations (Other than insurance corporations)	-17.8	14.2	11.1	14.0	7.3	-1.0	3.1
Health management and provider corporations	-24.0	15.1	17.0	12.2	6.3	-2.4	4.0
Corporations (Other than providers of health services)	10.5	11.3	-8.2	21.4	11.0	4.0	0.0
Households	8.6	8.6	8.8	10.8	8.9	4.1	9.2
Rest of the World							-
TOTAL CURRENT HEALTH EXPENDITURE	11.1	10.1	9.6	10.1	12.6	12.8	18.5

Table 9
CURRENT HEALTH EXPENDITURE BY FINANCING AGENT, 2014-2021
Percent share to total (in percent)

Financing Agent	2014	2015	2016	2017	2018	2019 ¹	2020 ¹	2021
General government	35.6	39.1	39.5	39.6	39.1	40.8	45.1	49.7
Central government	11.0	12.5	13.9	15.1	14.2	14.8	20.3	26.7
Department of Health	8.3	9.5	11.2	12.2	10.7	11.2	16.7	23.6
Other ministries and public units (belonging to central government)	2.8	3.1	2.7	2.9	3.5	3.6	3.6	3.1
State/Regional/Local government	7.7	7.2	7.2	7.3	8.3	8.6	10.1	9.3
Social security agency	16.8	19.4	18.4	17.2	16.6	17.4	14.7	13.6
Social Health Insurance Agency (PHIC)	16.8	19.4	18.4	17.2	16.6	17.4	14.7	13.6
Other social security agency (GSIS, SSS) ¹	0.0	0.0	0.0	0.0	0.0	0.0	0.0	0.0
Insurance corporations	1.4	1.9	1.8	2.0	2.0	2.2	2.7	2.6
Commercial insurance companies	1.4	1.9	1.8	2.0	2.0	2.2	2.7	2.6
Corporations (Other than insurance corporations)	10.6	7.8	8.1	8.2	8.5	8.1	7.1	6.2
Health management and provider corporations	8.7	5.9	6.2	6.6	6.8	6.4	5.5	4.8
Corporations (Other than providers of health services)	1.9	1.9	1.9	1.6	1.8	1.8	1.6	1.4
Households	52.4	51.2	50.5	50.1	50.4	48.8	45.0	41.5
Rest of the World	-	-	-	-	-	-	-	1
TOTAL CURRENT HEALTH EXPENDITURE	100.0	100.0	100.0	100.0	100.0	100.0	100.0	100.0

¹Percent share is less than 0.05 percent

Source: Philippine Statistics Authority

Table 10
CURRENT HEALTH EXPENDITURE BY HEALTH CARE FINANCING SCHEME, 2014-2021
Levels (in million PhP)

Financing Scheme	2014	2015	2016	2017	2018	2019 ^f	2020 ^e	2021
Government schemes and compulsory contributory health care financing schemes	177,821.18	216,990.56	241,594.93	263,353.16	287,194.34	337,994.43	421,427.86	546,642.45
Government schemes	100,514.46	117,765.14	139,464.24	156,936.52	174,237.88	204,171.76	293,555.87	406,481.43
Central government schemes	62,766.07	78,738.46	96,104.20	109,285.63	114,546.30	133,515.61	200,453.27	303,919.94
Domestic revenue-based central govt schemes	55,487.81	70,906.10	82,544.54	94,899.53	112,296.68	130,214.82	31,253.65	246,712.63
Foreign assistance-based central govt schemes	7,278.26	7,832.37	13,559.66	14,386.10	2,249.62	3,300.79	169,199.62	57,207.31
State/regional/local government schemes	37,748.39	39,026.68	43,360.04	47,650.88	59,691.58	70,656.15	93,102.61	102,561.49
Compulsory contributory health insurance schemes	77,306.72	99,225.42	102,130.70	106,416.65	112,956.46	133,822.67	127,871.99	140,161.03
Social health insurance schemes	77,306.72	99,225.42	102,130.70	106,416.65	112,956.46	133,822.67	127,845.76	140,161.03
Voluntary health care payment schemes	55,088.74	48,393.61	54,691.14	63,533.07	70,737.12	78,472.74	82,751.96	89,347.73
Voluntary health insurance schemes	49,445.63	42,435.76	48,227.14	56,459.47	62,933.52	70,174.30	75,778.63	81,348.71
Government-based voluntary insurance	27.39	28.45	37.31	33.59	31.48	32.82	26.23	70.63
Complementary/supplementary insurance schemes	49,418.24	42,407.31	48,189.83	56,425.88	62,902.04	70,141.49	75,778.63	81,278.08
Life and non-life insurance schemes	6,935.52	10,138.94	11,044.46	12,950.62	14,110.16	18,283.29	25,141.05	28,637.98
Managed health care schemes (HMOs)	42,482.72	32,268.38	37,145.37	43,475.27	48,791.88	51,858.19	50,637.58	52,640.10
Enterprise financing schemes	5,643.10	5,957.85	6,464.00	7,073.60	7,803.61	8,298.44	6,973.33	7,999.01
Household out-of-pocket payment	256,156.99	278,197.46	302,175.91	328,827.96	364,241.10	396,736.85	412,973.34	451,001.46
TOTAL CURRENT HEALTH EXPENDITURE	489,066.90	543,581.63	598,461.98	655,714.20	722,172.57	813,204.01	917,153.16	1,086,991.64

Table 11
CURRENT HEALTH EXPENDITURE BY HEALTH CARE FINANCING SCHEME, 2014-2021
Growth rates (in percent)

Financing Scheme	2014-15	2015-16	2016-17	2017-18	2018-19 ^e	2019 ^f -20 ^e	2020 ^e -21
Government schemes and compulsory contributory health care financing schemes	22.0	11.3	9.0	9.1	17.7	24.7	29.7
Government schemes	17.2	18.4	12.5	11.0	17.2	43.8	38.5
Central government schemes	25.4	22.1	13.7	4.8	16.6	50.1	51.6
Domestic revenue-based central govt schemes	27.8	16.4	15.0	18.3	16.0	-76.0	689.4
Foreign assistance-based central govt schemes	7.6	73.1	6.1	-84.4	46.7	**	-66.2
State/regional/local government schemes	3.4	11.1	9.9	25.3	18.4	31.8	10.2
Compulsory contributory health insurance schemes	28.4	2.9	4.2	6.1	18.5	-4.4	9.6
Social health insurance schemes	28.4	2.9	4.2	6.1	18.5	-4.5	9.6
Voluntary health care payment schemes	-12.2	13.0	16.2	11.3	10.9	5.5	8.0
Voluntary health insurance schemes	-14.2	13.6	17.1	11.5	11.5	8.0	7.4
Government-based voluntary insurance	3.9	31.2	-10.0	-6.3	4.3	-20.1	169.3
Complementary/supplementary insurance schemes	-14.2	13.6	17.1	11.5	11.5	8.0	7.3
Life and non-life insurance schemes	46.2	8.9	17.3	9.0	29.6	37.5	13.9
Managed health care schemes (HMOs)	-24.0	15.1	17.0	12.2	6.3	-2.4	4.0
Enterprise financing schemes	5.6	8.5	9.4	10.3	6.3	-16.0	14.7
Household out-of-pocket payment	8.6	8.6	8.8	10.8	8.9	4.1	9.2
TOTAL CURRENT HEALTH EXPENDITURE	11.1	10.1	9.6	10.1	12.6	12.8	18.5

**Growth rates greater than 1,000

Table 12
CURRENT HEALTH EXPENDITURE BY HEALTH CARE FINANCING SCHEME, 2014-2021
Percent share to total (in percent)

Financing Scheme	2014	2015	2016	2017	2018	2019 ^f	2020 ^e	2021
Government schemes and compulsory contributory health care financing schemes	36.4	39.9	40.4	40.2	39.8	41.6	45.9	50.3
Government schemes	20.6	21.7	23.3	23.9	24.1	25.1	32.0	37.4
Central government schemes	12.8	14.5	16.1	16.7	15.9	16.4	21.9	28.0
Domestic revenue-based central govt schemes	11.3	13.0	13.8	14.5	15.5	16.0	3.4	22.7
Foreign assistance-based central govt schemes	1.5	1.4	2.3	2.2	0.3	0.4	18.4	5.3
State/regional/local government schemes	7.7	7.2	7.2	7.3	8.3	8.7	10.2	9.4
Compulsory contributory health insurance schemes	15.8	18.3	17.1	16.2	15.6	16.5	13.9	12.9
Social health insurance schemes	15.8	18.3	17.1	16.2	15.6	16.5	13.9	12.9
Voluntary health care payment schemes	11.3	8.9	9.1	9.7	9.8	9.6	9.0	8.2
Voluntary health insurance schemes	10.1	7.8	8.1	8.6	8.7	8.6	8.3	7.5
Government-based voluntary insurance	0.0	0.0	0.0	0.0	0.0	0.0	0.0	0.0
Complementary/supplementary insurance schemes	10.1	7.8	8.1	8.6	8.7	8.6	8.3	7.5
Life and non-life insurance schemes	1.4	1.9	1.8	2.0	2.0	2.2	2.7	2.6
Managed health care schemes (HMOs)	8.7	5.9	6.2	6.6	6.8	6.4	5.5	4.8
Enterprise financing schemes	1.2	1.1	1.1	1.1	1.1	1.0	0.8	0.7
Household out-of-pocket payment	52.4	51.2	50.5	50.1	50.4	48.8	45.0	41.5
TOTAL CURRENT HEALTH EXPENDITURE	100.00	100.00	100.00	100.00	100.00	100.00	100.00	100.00

Source: Philippine Statistics Authority

Table 13
CURRENT HEALTH EXPENDITURE BY HEALTH CARE PROVIDER, 2014-2021
Levels (in million PhP)

Health Care Provider	2014	2015	2016	2017	2018	2019 ^f	2020 ^e	2021
Hospitals	200,703.49	233,562.57	246,608.25	269,875.02	303,551.72	356,972.27	401,617.56	453,226.59
General hospitals	159,528.47	189,109.77	199,210.02	215,717.21	242,358.46	280,842.36	310,087.76	342,932.53
Public general hospitals	77,610.66	94,728.68	99,703.47	109,634.47	130,209.61	151,827.94	181,678.97	196,417.07
Private general hospitals	81,917.81	94,381.09	99,506.55	106,082.75	112,148.85	129,014.43	128,408.80	146,515.47
Mental health hospitals	766.87	938.42	939.17	999.28	1,176.92	1,385.66	2,702.55	3,132.90
Specialised hospitals (Other than mental health hospitals)	11,852.08	14,516.10	14,968.32	15,885.96	19,500.60	28,955.58	31,443.54	34,608.75
Unspecified hospitals (n.e.c.)	28,556.07	28,998.28	31,490.74	37,272.57	40,515.74	45,788.67	57,383.71	72,552.41
Mental health and substance abuse facilities	225.43	280.47	260.96	411.12	688.63	1,306.74	2,080.75	2,121.82
Providers of ambulatory health care	20,596.21	24,391.72	25,680.58	27,734.51	30,722.51	35,414.19	40,230.29	46,052.99
Providers of ancillary services	147.59	178.21	143.54	119.54	374.75	911.32	1,343.27	919.45
Retailers and Other providers of medical goods	162,001.08	175,952.29	192,194.05	207,659.19	230,084.23	250,510.28	260,742.98	284,695.25
Providers of preventive care	39,276.91	47,069.25	54,365.70	60,569.15	54,140.20	60,699.22	79,219.39	86,132.90
Providers of health care system administration and financing	25,425.68	30,516.62	41,726.23	49,093.62	57,445.28	56,564.27	88,845.79	160,438.14
Government health administration agencies	10,820.89	12,209.59	21,858.00	25,249.53	31,294.93	27,493.90	47,076.48	120,996.22
Social health insurance agencies	5,035.94	6,197.04	7,792.02	6,645.30	6,850.13	7,486.26	7,145.08	7,845.58
Private health insurance administration agencies	8,892.05	11,124.09	11,023.62	16,471.56	18,051.99	19,749.46	33,741.00	30,039.05
Other administration agencies	676.81	985.91	1,062.60	727.23	1,248.23	1,834.65	883.23	1,557.29
Unspecified health care providers	40,690.51	31,630.51	37,482.67	40,252.05	45,165.24	50,825.73	43,073.14	53,404.51
TOTAL CURRENT HEALTH EXPENDITURE	489,066.90	543,581.63	598,461.98	655,714.20	722,172.57	813,204.01	917,153.16	1,086,991.64

Table 14
CURRENT HEALTH EXPENDITURE BY HEALTH CARE PROVIDER, 2014-2021
Growth rates (in percent)

Health Care Provider	2014-15	2015-16	2016-17	2017-18	2018-19 ^f	2019-20 ^e	2020-21
Hospitals	16.4	5.6	9.4	12.5	17.6	12.5	12.9
General hospitals	18.5	5.3	8.3	12.4	15.9	10.4	10.6
Public general hospitals	22.1	5.3	10.0	18.8	16.6	19.7	8.1
Private general hospitals	15.2	5.4	6.6	5.7	15.0	-0.5	14.1
Mental health hospitals	22.4	0.1	6.4	17.8	17.7	95.0	15.9
Specialised hospitals (Other than mental health hospitals)	22.5	3.1	6.1	22.8	48.5	8.6	10.1
Unspecified hospitals (n.e.c.)	1.5	8.6	18.4	8.7	13.0	25.3	26.4
Mental health and substance abuse facilities	24.4	-7.0	57.5	67.5	89.8	59.2	2.0
Providers of ambulatory health care	18.4	5.3	8.0	10.8	15.3	13.6	14.5
Providers of ancillary services	20.7	-19.5	-16.7	213.5	143.2	47.4	-31.6
Retailers and Other providers of medical goods	8.6	9.2	8.0	10.8	8.9	4.1	9.2
Providers of preventive care	19.8	15.5	11.4	-10.6	12.1	30.5	8.7
Providers of health care system administration and financing	20.0	36.7	17.7	17.0	-1.5	57.1	80.6
Government health administration agencies	12.8	79.0	15.5	23.9	-12.1	71.2	157.0
Social health insurance agencies	23.1	25.6	-14.6	3.1	9.3	-4.6	9.8
Private health insurance administration agencies	25.1	-0.9	49.4	9.6	9.4	70.8	-11.0
Other administration agencies	45.7	7.8	-31.6	71.6	47.0	-51.9	76.3
Unspecified health care providers	-22.3	18.5	7.4	12.2	12.5	-15.3	24.0
TOTAL CURRENT HEALTH EXPENDITURE	11.1	10.1	9.6	10.1	12.6	12.8	18.5

Table 15
CURRENT HEALTH EXPENDITURE BY HEALTH CARE PROVIDER, 2014-2021
Percent share to total (in percent)

Health Care Provider	2014	2015	2016	2017	2018	2019 ^f	2020 ^e	2021
Hospitals	41.0	43.0	41.2	41.2	42.0	43.9	43.8	41.7
General hospitals	32.6	34.8	33.3	32.9	33.6	34.5	33.8	31.5
Public general hospitals	15.9	17.4	16.7	16.7	18.0	18.7	19.8	18.1
Private general hospitals	16.7	17.4	16.6	16.2	15.5	15.9	14.0	13.5
Mental health hospitals	0.2	0.2	0.2	0.2	0.2	0.2	0.3	0.3
Specialised hospitals (Other than mental health hospitals)	2.4	2.7	2.5	2.4	2.7	3.6	3.4	3.2
Unspecified hospitals (n.e.c.)	5.8	5.3	5.3	5.7	5.6	5.6	6.3	6.7
Mental health and substance abuse facilities	0.0	0.1	0.0	0.1	0.1	0.2	0.2	0.2
Providers of ambulatory health care	4.2	4.5	4.3	4.2	4.3	4.4	4.4	4.2
Providers of ancillary services	0.0	0.0	0.0	0.0	0.1	0.1	0.1	0.1
Retailers and Other providers of medical goods	33.1	32.4	32.1	31.7	31.9	30.8	28.4	26.2
Providers of preventive care	8.0	8.7	9.1	9.2	7.5	7.5	8.6	7.9
Providers of health care system administration and financing	5.2	5.6	7.0	7.5	8.0	7.0	9.7	14.8
Government health administration agencies	2.2	2.2	3.7	3.9	4.3	3.4	5.1	11.1
Social health insurance agencies	1.0	1.1	1.3	1.0	0.9	0.9	0.8	0.7
Private health insurance administration agencies	1.8	2.0	1.8	2.5	2.5	2.4	3.7	2.8
Other administration agencies	0.1	0.2	0.2	0.1	0.2	0.2	0.1	0.1
Unspecified health care providers	8.3	5.8	6.3	6.1	6.3	6.3	4.7	4.9
TOTAL CURRENT HEALTH EXPENDITURE	100.0	100.0	100.0	100.0	100.0	100.0	100.0	100.0

Source: Philippine Statistics Authority

Table 16
CURRENT HEALTH EXPENDITURE BY FACTORS OF HEALTH CARE PROVISION, 2014-2021
Levels (in million PhP)

Factor of Health Care Provision	2014	2015	2016	2017	2018	2019 ^f	2020 ^e	2021
Compensation of employees	61,454.84	67,527.06	82,532.64	92,261.22	109,363.53	133,857.56	159,532.19	197,645.24
Wages and salaries	61,454.84	67,527.06	82,532.64	92,261.22	109,363.53	133,857.56	159,532.19	197,645.24
Materials and services used	297,910.96	358,401.30	384,257.00	421,573.61	470,332.66	517,183.84	667,152.58	745,262.57
Health care services	5,640.66	5,982.52	6,485.26	7,092.51	7,803.58	8,330.56	179,769.88	205,409.84
Health care goods	181,873.42	193,958.72	208,700.68	228,770.43	252,597.64	278,716.03	305,323.90	337,857.90
Pharmaceuticals	115,634.39	119,728.57	129,149.11	142,942.22	157,224.46	168,729.55	188,728.01	208,699.54
Other health care goods	66,239.03	74,230.15	79,551.57	85,828.22	95,373.18	109,986.48	116,595.90	129,158.36
Other materials and services used (n.e.c.)	110,396.89	158,460.05	169,071.06	185,710.67	209,931.45	230,137.24	182,058.80	201,994.83
Consumption of fixed capital	29,954.04	9,859.27	11,169.15	12,085.44	13,478.78	15,237.53	2,020.35	2,031.21
Other items of spending on inputs	88,711.19	95,531.29	101,844.70	111,862.11	122,353.51	139,079.10	76,332.78	77,992.16
Taxes	3,364.51	3,161.44	2,935.39	3,104.66	3,544.84	4,311.29	6,555.42	3,165.64
Gross Operating Surplus	85,346.68	92,369.84	98,909.31	108,757.45	118,808.66	134,767.81	69,777.36	74,826.52
Unspecified factors of health care provision	11,035.88	12,262.72	18,658.49	17,931.81	6,644.08	7,845.98	12,115.27	64,060.46
TOTAL CURRENT HEALTH EXPENDITURE	489,066.90	543,581.63	598,461.98	655,714.20	722,172.57	813,204.01	917,153.16	1,086,991.64

Table 17
CURRENT HEALTH EXPENDITURE BY FACTORS OF HEALTH CARE PROVISION, 2014-2021
Growth rates (in percent)

Factor of Health Care Provision	2014-15	2015-16	2016-17	2017-18	2018-19 ^e	2019-20 ^e	2020-21
Compensation of employees	9.9	22.2	11.8	18.5	22.4	19.2	23.9
Wages and salaries	9.9	22.2	11.8	18.5	22.4	19.2	23.9
Materials and services used	20.3	7.2	9.7	11.6	10.0	29.0	11.7
Health care services	6.1	8.4	9.4	10.0	6.8	**	14.3
Health care goods	6.6	7.6	9.6	10.4	10.3	9.5	10.7
Pharmaceuticals	3.5	7.9	10.7	10.0	7.3	11.9	10.6
Other health care goods	12.1	7.2	7.9	11.1	15.3	6.0	10.8
Other materials and services used (n.e.c.)	43.5	6.7	9.8	13.0	9.6	-20.9	11.0
Consumption of fixed capital	-67.1	13.3	8.2	11.5	13.0	-86.7	0.5
Other items of spending on inputs	7.7	6.6	9.8	9.4	13.7	-45.1	2.2
Taxes	-6.0	-7.2	5.8	14.2	21.6	52.1	-51.7
Gross Operating Surplus	8.2	7.1	10.0	9.2	13.4	-48.2	7.2
Unspecified factors of health care provision	11.1	52.2	-3.9	-62.9	18.1	54.4	428.8
TOTAL CURRENT HEALTH EXPENDITURE	11.1	10.1	9.6	10.1	12.6	12.8	18.5

**Growth rates greater than 1,000

Table 18
CURRENT HEALTH EXPENDITURE BY FACTORS OF HEALTH CARE PROVISION, 2014-2021
Percent share to total (in percent)

Factor of Health Care Provision	2014	2015	2016	2017	2018	2019 ^f	2020 ^e	2021
Compensation of employees	12.6	12.4	13.8	14.1	15.1	16.5	17.4	18.2
Wages and salaries	12.6	12.4	13.8	14.1	15.1	16.5	17.4	18.2
Materials and services used	60.9	65.9	64.2	64.3	65.1	63.6	72.7	68.6
Health care services	1.2	1.1	1.1	1.1	1.1	1.0	19.6	18.9
Health care goods	37.2	35.7	34.9	34.9	35.0	34.3	33.3	31.1
Pharmaceuticals	23.6	22.0	21.6	21.8	21.8	20.7	20.6	19.2
Other health care goods	13.5	13.7	13.3	13.1	13.2	13.5	12.7	11.9
Other materials and services used (n.e.c.)	22.6	29.2	28.3	28.3	29.1	28.3	19.9	18.6
Consumption of fixed capital	6.1	1.8	1.9	1.8	1.9	1.9	0.2	0.2
Other items of spending on inputs	18.1	17.6	17.0	17.1	16.9	17.1	8.3	7.2
Taxes	0.7	0.6	0.5	0.5	0.5	0.5	0.7	0.3
Gross Operating Surplus	17.5	17.0	16.5	16.6	16.5	16.6	7.6	6.9
Unspecified factors of health care provision	2.3	2.3	3.1	2.7	0.9	1.0	1.3	5.9
TOTAL CURRENT HEALTH EXPENDITURE	100.0	100.0	100.0	100.0	100.0	100.0	100.0	100.0

Source: Philippine Statistics Authority

Table 19
HEALTH CAPITAL FORMATION EXPENDITURE, 2014-2021
Levels (in million PhP)

Gross Fixed Capital Formation	2014	2015	2016	2017	2018	2019 ^f	2020 ^f	2021
Infrastructure	30,056.82	50,530.55	44,949.44	51,148.84	58,498.75	40,400.26	34,256.82	28,140.59
Residential and non-residential buildings	21,774.81	50,382.97	44,949.44	50,969.79	58,204.41	39,749.59	34,256.82	28,140.59
Other structures	8,282.02	147.58	-	179.05	294.34	650.67	-	-
Machinery and equipment	12,250.10	13,048.67	28,624.03	33,148.06	67,827.60	43,989.35	54,012.63	42,844.83
Medical equipment	10,087.13	12,007.80	24,742.21	29,014.49	59,729.29	15,612.41	30,992.87	29,407.14
Transport equipment	2,099.72	938.93	3,538.77	2,608.03	6,696.84	3,952.51	2,654.08	3,031.64
ICT equipment	1.99	2.84	266.41	1,431.49	1,366.96	9,387.20	2,311.96	539.80
Machinery and equipment n.e.c.	61.26	99.09	76.64	94.05	34.51	15,037.23	18,053.73	9,866.24
Intellectual property products	-	-	72.25	114.28	182.81	-	272.27	165.15
Computer software and databases	-	-	72.25	114.28	182.81	-	272.27	53.27
Intellectual property products n.e.c.	-	-	-	-	-	-	-	111.88
TOTAL GROSS FIXED CAPITAL FORMATION	42,306.93	63,579.22	73,645.72	84,411.18	126,509.16	84,389.61	88,541.73	71,150.57

Table 20
HEALTH CAPITAL FORMATION EXPENDITURE, 2014-2021
Growth rates (in percent)

Gross Fixed Capital Formation	2014-15	2015-16	2016-17	2017-18	2018-19 ^f	2019 ^f -20 ^f	2020 ^f -21
Infrastructure	68.1	-11.0	13.8	14.4	-30.9	-15.2	-17.9
Residential and non-residential buildings	131.4	-10.8	13.4	14.2	-31.7	-13.8	-17.9
Other structures	-98.2	-100.0	-	64.4	121.1	-100.0	-
Machinery and equipment	6.5	119.4	15.8	104.6	-35.1	22.8	-20.7
Medical equipment	19.0	106.1	17.3	105.9	-73.9	98.5	-5.1
Transport equipment	-55.3	276.9	-26.3	156.8	-41.0	-32.9	14.2
ICT equipment	42.5	**	437.3	-4.5	586.7	-75.4	-76.7
Machinery and equipment n.e.c.	61.7	-22.7	22.7	-63.3	**	20.1	-45.4
Intellectual property products	-	-	58.2	60.0	-100.0	-	-39.3
Computer software and databases	-	-	58.2	60.0	-100.0	-	-80.4
Intellectual property products n.e.c.	-	-	-	-	-	-	-
TOTAL GROSS FIXED CAPITAL FORMATION	50.3	15.8	14.6	49.9	-33.3	4.9	-19.6

**Growth rates greater than 1,000

Table 21
HEALTH CAPITAL FORMATION EXPENDITURE, 2014-2021
Percent share to total (in percent)

Gross Fixed Capital Formation	2014	2015	2016	2017	2018	2019 ^f	2020 ^f	2021
Infrastructure	71.0	79.5	61.0	60.6	46.2	47.9	38.7	39.6
Residential and non-residential buildings	51.5	79.2	61.0	60.4	46.0	47.1	38.7	39.6
Other structures	19.6	0.2	-	0.2	0.2	0.8	-	-
Machinery and equipment	29.0	20.5	38.9	39.3	53.6	52.1	61.0	60.2
Medical equipment	23.8	18.9	33.6	34.4	47.2	18.5	35.0	41.3
Transport equipment	5.0	1.5	4.8	3.1	5.3	4.7	3.0	4.3
ICT equipment	0.0	0.0	0.4	1.7	1.1	11.1	2.6	0.8
Machinery and equipment n.e.c.	0.1	0.2	0.1	0.1	0.0	17.8	20.4	13.9
Intellectual property products	-	-	0.1	0.1	0.1	0.0	0.3	0.2
Computer software and databases	-	-	0.1	0.1	0.1	0.0	0.3	0.1
Intellectual property products n.e.c.	-	-	-	-	-	0.0	0.0	0.2
TOTAL GROSS FIXED CAPITAL FORMATION	100.0	100.0	100.0	100.0	100.0	100.0	100.0	100.0

Source: Philippine Statistics Authority

Table 22
CURRENT HEALTH EXPENDITURE BY HEALTH CARE FUNCTION, 2014-2021
Levels (in million PhP)

Health Care Function	2014	2015	2016	2017	2018	2019 ^f	2020 ^r	2021
Curative care	249,820.18	279,888.47	299,275.96	326,527.45	366,804.47	429,091.35	455,269.82	503,159.95
Rehabilitative care	225.43	280.47	260.96	411.12	688.63	1,306.77	4,889.08	4,117.42
Ancillary services (non-specified by function)	8,811.97	9,588.10	10,364.48	11,241.98	12,695.02	14,330.52	15,842.42	16,764.93
Medical goods (non-specified by function)	162,001.08	175,952.29	192,194.05	207,659.19	230,084.23	250,512.79	269,780.09	295,093.34
Preventive care	39,353.58	47,117.34	54,408.77	60,604.29	54,140.46	60,699.51	85,079.44	161,452.46
Governance, and health system and financing administration	28,854.67	30,754.97	41,957.76	49,270.18	57,759.75	57,263.07	86,292.33	106,403.55
TOTAL CURRENT HEALTH EXPENDITURE	489,066.91	543,581.64	598,461.98	655,714.20	722,172.57	813,204.01	917,153.16	1,086,991.64

Table 23
CURRENT HEALTH EXPENDITURE BY HEALTH CARE FUNCTION, 2014-2021
Growth rates (in percent)

Health Care Function	2014-15	2015-16	2016-17	2017-18	2018-19 ^r	2019 ^f -20 ^r	2020 ^r -21
Curative care	12.0	6.9	9.1	12.3	17.0	6.1	10.5
Rehabilitative care	24.4	-7.0	57.5	67.5	89.8	274.1	-15.8
Ancillary services (non-specified by function)	8.8	8.1	8.5	12.9	12.9	10.6	5.8
Medical goods (non-specified by function)	8.6	9.2	8.0	10.8	8.9	7.7	9.4
Preventive care	19.7	15.5	11.4	-10.7	12.1	40.2	89.8
Governance, and health system and financing administration	6.6	36.4	17.4	17.2	-0.9	50.7	23.3
TOTAL CURRENT HEALTH EXPENDITURE	11.1	10.1	9.6	10.1	12.6	12.8	18.5

Table 24
CURRENT HEALTH EXPENDITURE BY HEALTH CARE FUNCTION, 2014-2021
Percent share to total (in percent)

Health Care Function	2014	2015	2016	2017	2018	2019 ^f	2020 ^r	2021
Curative care	51.1	51.5	50.0	49.8	50.8	52.8	49.6	46.3
Rehabilitative care	0.0	0.1	0.0	0.1	0.1	0.2	0.5	0.4
Ancillary services (non-specified by function)	1.8	1.8	1.7	1.7	1.8	1.8	1.7	1.5
Medical goods (non-specified by function)	33.1	32.4	32.1	31.7	31.9	30.8	29.4	27.1
Preventive care	8.0	8.7	9.1	9.2	7.5	7.5	9.3	14.9
Governance, and health system and financing administration	5.9	5.7	7.0	7.5	8.0	7.0	9.4	9.8
TOTAL CURRENT HEALTH EXPENDITURE	100.0	100.0	100.0	100.0	100.0	100.0	100.0	100.0

Source: Philippine Statistics Authority

Table 25
CURRENT HEALTH EXPENDITURE BY INCOME QUINTILE GROUP, 2014-2021
Levels (in million PhP)

Income Quintile	2014	2015	2016	2017	2018	2019 ^f	2020 ^f	2021
First Quintile ¹	77,778.96	92,808.11	100,860.55	114,063.25	124,642.72	143,799.43	158,992.74	190,433.12
Second Quintile	56,960.53	65,008.48	71,810.09	76,148.46	85,255.47	100,606.05	116,856.14	141,488.50
Third Quintile	68,602.01	76,839.13	84,757.60	91,647.80	101,657.52	119,586.29	139,173.35	166,528.92
Fourth Quintile	89,383.32	98,433.15	108,617.30	118,900.41	131,171.02	153,398.49	176,393.71	208,782.34
Fifth Quintile	196,342.08	210,492.76	232,416.44	254,954.28	279,445.84	295,813.75	325,737.22	379,758.77
TOTAL CURRENT HEALTH EXPENDITURE	489,066.91	543,581.64	598,461.98	655,714.20	722,172.57	813,204.01	917,153.16	1,086,991.64

Table 26
CURRENT HEALTH EXPENDITURE BY INCOME QUINTILE GROUP, 2014-2021
Growth rates (in percent)

Income Quintile	2014-15	2015-16	2016-17	2017-18	2018-19 ^f	2019 ^f -20 ^f	2020 ^f -21
First Quintile ¹	19.3	8.7	13.1	9.3	15.4	10.6	19.8
Second Quintile	14.1	10.5	6.0	12.0	18.0	16.2	21.1
Third Quintile	12.0	10.3	8.1	10.9	17.6	16.4	19.7
Fourth Quintile	10.1	10.3	9.5	10.3	16.9	15.0	18.4
Fifth Quintile	7.2	10.4	9.7	9.6	5.9	10.1	16.6
TOTAL CURRENT HEALTH EXPENDITURE	11.1	10.1	9.6	10.1	12.6	12.8	18.5

Table 27
CURRENT HEALTH EXPENDITURE BY INCOME QUINTILE GROUP, 2014-2021
Percent share to total (in percent)

Income Quintile	2014	2015	2016	2017	2018	2019 ^f	2020 ^f	2021
First Quintile ¹	15.9	17.1	16.9	17.4	17.3	17.7	17.3	17.5
Second Quintile	11.6	12.0	12.0	11.6	11.8	12.4	12.7	13.0
Third Quintile	14.0	14.1	14.2	14.0	14.1	14.7	15.2	15.3
Fourth Quintile	18.3	18.1	18.1	18.1	18.2	18.9	19.2	19.2
Fifth Quintile	40.1	38.7	38.8	38.9	38.7	36.4	35.5	34.9
TOTAL CURRENT HEALTH EXPENDITURE	100.0	100.0	100.0	100.0	100.0	100.0	100.0	100.0

¹(bottom)
Source: Philippine Statistics Authority

Table 28
CURRENT HEALTH EXPENDITURE BY DISEASE GROUP, 2014-2021
Pagsasagot (in million PHP)

Classification of Diseases/Conditions	2014	2015	2016	2017	2018	2019 ^a	2020 ^a	2021
Infectious and parasitic diseases	118,499.05	129,674.42	142,140.10	207,491.57	169,491.82	248,341.00	133,217.55	296,538.91
HIV/AIDS and Other Sexually Transmitted Diseases (STDs)	271.97	433.14	517.24	673.96	1,041.98	60,773.60	4,132.89	12,026.25
Tuberculosis (TB)	5,428.80	6,014.33	9,592.50	13,358.41	6,849.05	7,877.97	28,750.02	35,765.11
Malaria	63.93	309.68	507.33	734.79	129.78	385.36	593.47	274.25
Respiratory infections	53,000.63	56,555.12	59,069.84	65,070.33	72,763.48	80,807.31	16,640.41	69,506.97
Diarrheal diseases	15,080.00	16,005.82	17,529.19	66,701.83	20,483.35	21,914.65	6,368.98	10,263.91
Neglected tropical diseases (dengue)	8,536.01	9,561.27	10,583.18	9,044.81	9,457.73	10,204.66	210.38	364.67
Vaccine preventable diseases	19,886.90	22,025.35	23,911.20	27,793.04	30,802.54	35,214.56	36,166.04	29,757.50
Hepatitis	-	-	-	-	25.63	23.14	332.01	1,278.09
Public Health Emergency of International Concern (PHEIC)	-	-	-	-	-	-	24,306.95	112,425.22
Disease from Coronavirus SARS-CoV-2 (COVID-19)	-	-	-	-	-	-	24,306.95	112,425.22
Other and unspecified infectious and parasitic diseases (n.e.c.)	16,230.83	18,769.70	20,429.64	24,114.41	27,938.28	31,139.76	15,716.42	24,876.94
Reproductive Health	72,084.50	78,342.97	84,709.97	83,776.49	114,275.30	100,019.39	94,885.93	90,493.27
Maternal conditions	42,598.96	42,807.50	45,732.52	41,908.04	65,781.11	53,924.84	49,736.42	40,466.74
Perinatal conditions	19,835.16	24,056.15	27,406.16	30,115.38	32,579.15	32,948.77	23,788.96	21,876.51
Unspecified reproductive health conditions (n.e.c.)	9,650.37	11,479.31	11,571.30	11,753.07	15,915.04	13,145.77	21,360.54	28,150.02
Nutritional deficiencies	56,982.39	62,255.82	68,321.28	77,261.27	89,192.12	95,566.97	105,211.76	122,250.65
Noncommunicable diseases	165,789.12	189,035.16	204,741.01	190,924.80	244,741.18	248,795.03	278,562.96	262,956.93
Neoplasms	14,195.35	15,861.92	17,381.18	14,768.62	23,948.05	19,331.05	52,775.12	36,346.84
Endocrine and metabolic disorders (diabetes)	4,474.54	5,148.24	5,748.00	6,364.83	7,216.89	7,625.15	12,258.12	12,448.69
Cardiovascular diseases	39,837.00	44,055.57	47,803.23	52,150.06	62,959.33	68,398.80	33,937.22	31,897.12
Mental & behavioural disorders, and neurological conditions	2,655.11	3,611.55	2,650.54	2,789.92	2,925.82	4,267.64	13,763.95	15,737.95
Respiratory diseases	2,996.72	2,856.98	3,178.32	3,599.35	9,237.29	9,851.41	12,268.68	13,013.05
Diseases of the digestive	2,273.24	1,950.74	2,216.73	2,595.59	5,787.44	6,081.62	18,058.62	12,029.66
Diseases of the genito-urinary system (nephritis)	16,818.12	20,696.92	22,562.97	12,730.58	31,325.66	22,812.03	63,705.04	72,289.93
Sense organ diseases	-	-	-	-	183.18	183.22	34,191.95	33,750.99
Oral diseases	-	-	-	-	42.26	42.96	705.06	2,624.43
Other and unspecified noncommunicable diseases (n.e.c.)	82,739.03	94,853.23	103,200.04	95,925.85	101,115.27	110,201.16	36,899.20	32,818.27
Injuries	25,667.65	28,239.16	30,865.45	31,721.59	38,368.31	39,661.03	83,126.92	86,029.92
Non-disease specific	39,855.21	42,641.86	54,563.39	53,173.60	51,751.73	63,344.66	211,912.86	217,623.14
Other and unspecified diseases/conditions (n.e.c.)	10,189.00	13,392.25	13,120.78	11,364.87	14,352.11	17,475.93	10,235.19	11,098.82
TOTAL CURRENT HEALTH EXPENDITURE	489,066.90	543,581.63	598,461.98	655,714.20	722,172.57	813,204.01	917,153.16	1,086,991.64

Table 29
CURRENT HEALTH EXPENDITURE BY DISEASE GROUP, 2014-2021
Growth rates (in percent)

Classification of Diseases/Conditions	2014-15	2015-16	2016-17	2017-18	2018-19 ^a	2019-20 ^a	2020-21
Infectious and parasitic diseases	9.4	9.6	46.0	-18.3	46.5	-46.4	122.6
HIV/AIDS and Other Sexually Transmitted Diseases (STDs)	59.3	19.4	30.3	54.6	**	-93.2	191.0
Tuberculosis (TB)	10.8	59.5	39.3	-48.7	15.0	264.9	24.4
Malaria	384.4	63.8	44.8	-82.3	196.9	54.0	-53.8
Respiratory infections	6.7	4.4	10.2	11.8	11.1	-79.4	317.7
Diarrheal diseases	6.1	9.5	280.5	-69.3	7.0	-70.9	61.2
Neglected tropical diseases (dengue)	12.0	10.7	-14.5	4.6	7.9	-97.9	73.3
Vaccine preventable diseases	10.8	8.6	16.2	10.8	14.3	2.7	-17.7
Hepatitis	-	-	-	-	-9.7	**	285.0
Public Health Emergency of International Concern (PHEIC)	-	-	-	-	-	-	362.5
Disease from Coronavirus SARS-CoV-2 (COVID-19)	-	-	-	-	-	-	362.5
Other and unspecified infectious and parasitic diseases (n.e.c.)	15.6	8.8	18.0	15.9	11.5	-49.5	58.3
Reproductive Health	8.7	8.1	-1.1	36.4	-12.5	-5.1	-4.6
Maternal conditions	0.5	6.8	-8.4	57.0	-18.0	-7.8	-18.6
Perinatal conditions	21.3	13.9	9.9	8.2	1.1	-27.8	-8.0
Unspecified reproductive health conditions (n.e.c.)	19.0	0.8	1.6	35.4	-17.4	62.5	31.8
Nutritional deficiencies	9.3	9.7	13.1	15.4	7.1	10.1	16.2
Noncommunicable diseases	14.0	8.3	-6.7	28.2	1.7	12.0	-5.6
Neoplasms	11.7	9.6	-15.0	62.2	-19.3	173.0	-31.1
Endocrine and metabolic disorders (diabetes)	15.1	11.6	10.7	13.4	5.7	60.8	1.6
Cardiovascular diseases	10.6	8.5	9.1	20.7	8.6	-50.4	-6.0
Mental & behavioural disorders, and neurological conditions	36.0	-26.6	5.3	4.9	45.9	222.5	14.3
Respiratory diseases	-4.7	11.2	13.2	156.6	6.6	24.5	6.1
Diseases of the digestive	-14.2	13.6	17.1	123.0	5.1	196.9	-33.4
Diseases of the genito-urinary system (nephritis)	24.5	9.0	-43.6	146.1	-27.2	179.3	13.5
Sense organ diseases	-	-	-	-	0.0	**	-1.3
Oral diseases	-	-	-	-	1.7	**	272.2
Other and unspecified noncommunicable diseases (n.e.c.)	14.6	8.8	-7.0	5.4	9.0	-66.5	-11.1
Injuries	10.0	9.3	2.8	21.0	3.4	109.6	3.5
Non-disease specific	7.0	28.0	-2.5	-2.7	22.4	234.5	2.7
Other and unspecified diseases/conditions (n.e.c.)	-	-	-	-	-	-	-
TOTAL CURRENT HEALTH EXPENDITURE	11.1	10.1	9.6	10.1	12.6	12.8	18.5

^aGrowth rates greater than 1,000

Table 30
CURRENT HEALTH EXPENDITURE BY DISEASE GROUP, 2014-2021
Percentage share to total (in percent)

Classification of Diseases/Conditions	2014	2015	2016	2017	2018	2019 ^a	2020 ^a	2021
Infectious and parasitic diseases	24.2	23.9	23.8	31.6	23.5	30.5	14.5	27.3
HIV/AIDS and Other Sexually Transmitted Diseases (STDs)	0.1	0.1	0.1	0.1	0.1	7.5	0.5	1.1
Tuberculosis (TB)	1.1	1.1	1.6	2.0	0.9	1.0	3.1	3.3
Malaria	0.0	0.1	0.1	0.1	0.0	0.0	0.1	0.0
Respiratory infections	10.8	10.4	9.9	9.9	10.1	9.9	1.8	6.4
Diarrheal diseases	3.1	2.9	2.9	10.2	2.8	2.7	0.7	0.9
Neglected tropical diseases (dengue)	1.7	1.8	1.8	1.4	1.3	1.3	0.0	0.0
Vaccine preventable diseases	4.1	4.1	4.0	4.2	4.3	4.3	3.9	2.7
Hepatitis	0.0	0.0	0.0	0.0	0.0	0.0	0.0	0.1
Public Health Emergency of International Concern (PHEIC)	-	-	-	-	-	-	2.7	10.3
Disease from Coronavirus SARS-CoV-2 (COVID-19)	-	-	-	-	-	-	2.7	10.3
Other and unspecified infectious and parasitic diseases (n.e.c.)	3.3	3.5	3.4	3.7	3.9	3.8	1.7	2.3
Reproductive Health	14.7	14.4	14.2	12.8	15.8	12.3	10.3	8.3
Maternal conditions	8.7	7.9	7.6	6.4	9.1	6.6	5.4	3.7
Perinatal conditions	4.1	4.4	4.6	4.6	4.5	4.1	2.6	2.0
Unspecified reproductive health conditions (n.e.c.)	2.0	2.1	1.9	1.8	2.2	1.6	2.3	2.6
Nutritional deficiencies	11.7	11.5	11.4	11.8	12.4	11.8	11.5	11.2
Noncommunicable diseases	33.9	34.8	34.2	29.1	33.9	30.6	30.4	24.2
Neoplasms	2.9	2.9	2.9	2.3	3.3	2.4	5.8	3.3
Endocrine and metabolic disorders (diabetes)	0.9	0.9	1.0	1.0	1.0	0.9	1.3	1.1
Cardiovascular diseases	8.1	8.1	8.0	8.0	8.7	8.4	3.7	2.9
Mental & behavioural disorders, and neurological conditions	0.5	0.7	0.4	0.4	0.4	0.5	1.5	1.4
Respiratory diseases	0.6	0.5	0.5	0.5	1.3	1.2	1.3	1.2
Diseases of the digestive	0.5	0.4	0.4	0.4	0.8	0.7	2.0	1.1
Diseases of the genito-urinary system (nephritis)	3.4	3.8	3.8	1.9	4.3	2.8	6.9	6.7
Sense organ diseases	0.0	0.0	0.0	0.0	0.0	0.0	3.7	3.1
Oral diseases	0.0	0.0	0.0	0.0	0.0	0.0	0.1	0.2
Other and unspecified noncommunicable diseases (n.e.c.)	16.9	17.4	17.2	14.6	14.0	13.6	4.0	3.0
Injuries	5.2	5.2	5.2	4.8	5.3	4.9	9.1	7.9
Non-disease specific	8.1	7.8	9.1	8.1	7.2	7.8	23.1	20.0
Other and unspecified diseases/conditions (n.e.c.)	2.1	2.5	2.2	1.7	2.0	2.1	1.1	1.0
TOTAL CURRENT HEALTH EXPENDITURE	100.0	100.0	100.0	100.0	100.0	100.0	100.0	100.0

Source: Philippine Statistics Authority

Table 34
CURRENT HEALTH EXPENDITURE BY REGION, 2014-2021
Levels (in million PHP)

Region	2014	2015	2016	2017	2018	2019 ^f	2020 ^e	2021
NCR National Capital Region	120,731.06	125,034.07	134,929.05	144,644.90	160,858.77	205,962.74	161,857.07	180,058.03
CAR Cordillera Administrative Region	10,047.66	11,188.73	12,296.49	13,655.10	15,070.02	17,220.45	21,749.64	20,645.43
I Ilocos Region	19,568.12	21,985.75	24,072.27	26,534.58	29,140.45	30,494.91	43,409.60	43,505.06
II Cagayan Valley	11,436.58	13,021.97	14,397.45	15,124.36	16,890.72	17,039.08	29,326.44	27,619.19
III Central Luzon	53,101.58	58,358.66	64,715.38	69,621.95	78,642.85	86,755.49	101,402.06	104,499.10
IVA CALABARZON	13,946.77	14,197.18	17,541.91	18,293.79	26,731.96	19,106.56	29,699.07	34,127.43
MIMAROPA	6,005.48	6,599.88	7,275.93	8,916.98	3,299.04	1,906.33	18,552.75	21,284.00
V Bicol Region	20,303.91	22,271.52	24,490.86	25,888.27	28,939.60	34,014.08	40,877.35	43,296.15
VI Western Visayas	31,471.59	33,861.06	37,636.93	41,057.09	45,867.02	50,710.49	59,800.37	63,724.95
VII Central Visayas	28,618.75	30,372.05	33,304.65	37,244.05	42,335.14	47,003.64	54,883.06	58,201.72
VIII Eastern Visayas	15,267.35	16,407.75	18,676.19	19,434.17	20,835.74	22,954.46	28,261.65	30,211.78
IX Zamboanga Peninsula	10,564.26	11,727.20	12,922.29	13,453.94	15,194.59	16,448.28	727.29	21,963.99
X Northern Mindanao	16,599.41	18,392.96	19,715.93	21,618.30	22,814.02	21,991.79	35,229.05	35,618.68
XI Davao Region	17,939.34	20,357.26	21,594.02	23,092.98	25,901.98	26,906.30	40,370.30	40,417.96
XII SOCCSKSARGEN	19,007.48	20,974.90	22,151.58	23,507.34	27,003.49	25,347.80	38,209.04	38,444.78
XIII Caraga	8,394.02	9,254.21	10,231.24	11,114.72	11,002.44	12,289.56	17,376.48	21,532.50
BARMM Bangsamoro Autonomous Region in Muslim Mindanao	3,943.86	4,623.54	4,751.95	5,056.75	7,508.43	8,320.39	22,585.79	15,923.14
Nationwide	82,119.72	104,952.95	117,757.85	137,454.92	144,136.31	168,731.66	172,836.15	285,917.76
TOTAL CURRENT HEALTH EXPENDITURE	489,066.90	543,581.63	598,461.98	655,714.20	722,172.57	813,204.01	917,153.16	1,086,991.64

Table 35
CURRENT HEALTH EXPENDITURE BY REGION, 2014-2021
Growth rates (in percent)

Region	2014-15	2015-16	2016-17	2017-18	2018-19 ^e	2019-20 ^e	2020-21
NCR National Capital Region	3.6	7.9	7.2	11.2	28.0	-21.4	11.2
CAR Cordillera Administrative Region	11.4	9.9	11.0	10.4	14.3	26.3	-5.1
I Ilocos Region	12.4	9.5	10.2	9.8	4.6	42.4	0.2
II Cagayan Valley	13.9	10.6	5.0	11.7	0.9	72.1	-5.8
III Central Luzon	9.9	10.9	7.6	13.0	10.3	16.9	3.1
IVA CALABARZON	1.8	23.6	4.3	46.1	-28.5	55.4	14.9
MIMAROPA	9.9	10.2	22.6	-63.0	-42.2	873.2	14.7
V Bicol Region	9.7	10.0	5.7	11.8	17.5	20.2	5.9
VI Western Visayas	7.6	11.2	9.1	11.7	10.6	17.9	6.6
VII Central Visayas	6.1	9.7	11.8	13.7	11.0	16.8	6.0
VIII Eastern Visayas	7.5	13.8	4.1	7.2	10.2	23.1	6.9
IX Zamboanga Peninsula	11.0	10.2	4.1	12.9	8.3	-95.6	**
X Northern Mindanao	10.8	7.2	9.6	5.5	-3.6	60.2	1.1
XI Davao Region	13.5	6.1	6.9	12.2	3.9	50.0	0.1
XII SOCCSKSARGEN	10.4	5.6	6.1	14.9	-6.1	50.7	0.6
XIII Caraga	10.2	10.6	8.6	-1.0	11.7	41.4	23.9
BARMM Bangsamoro Autonomous Region in Muslim Mindanao	17.2	2.8	6.4	48.5	10.8	171.5	-29.5
Nationwide	27.8	12.2	16.7	4.9	17.1	2.4	65.4
TOTAL CURRENT HEALTH EXPENDITURE	11.1	10.1	9.6	10.1	12.6	12.8	18.5

**Growth rates greater than 1,000

Table 36
CURRENT HEALTH EXPENDITURE BY REGION, 2014-2021
Percent share to total (in percent)

Region	2014	2015	2016	2017	2018	2019 ^f	2020 ^e	2021
NCR National Capital Region	24.7	23.0	22.5	22.1	22.3	25.3	17.6	16.6
CAR Cordillera Administrative Region	2.1	2.1	2.1	2.1	2.1	2.1	2.4	1.9
I Ilocos Region	4.0	4.0	4.0	4.0	4.0	3.7	4.7	4.0
II Cagayan Valley	2.3	2.4	2.4	2.3	2.3	2.1	3.2	2.5
III Central Luzon	10.9	10.7	10.8	10.6	10.9	10.7	11.1	9.6
IVA CALABARZON	2.9	2.6	2.9	2.8	3.7	2.3	3.2	3.1
MIMAROPA	1.2	1.2	1.2	1.4	0.5	0.2	2.0	2.0
V Bicol Region	4.2	4.1	4.1	3.9	4.0	4.2	4.5	4.0
VI Western Visayas	6.4	6.2	6.3	6.3	6.4	6.2	6.5	5.9
VII Central Visayas	5.9	5.6	5.6	5.7	5.9	5.8	6.0	5.4
VIII Eastern Visayas	3.1	3.0	3.1	3.0	2.9	2.8	3.1	2.8
IX Zamboanga Peninsula	2.2	2.2	2.2	2.1	2.1	2.0	0.1	2.0
X Northern Mindanao	3.4	3.4	3.3	3.3	3.2	2.7	3.8	3.3
XI Davao Region	3.7	3.7	3.6	3.5	3.6	3.3	4.4	3.7
XII SOCCSKSARGEN	3.9	3.9	3.7	3.6	3.7	3.1	4.2	3.5
XIII Caraga	1.7	1.7	1.7	1.7	1.5	1.5	1.9	2.0
BARMM Bangsamoro Autonomous Region in Muslim Mindanao	0.8	0.9	0.8	0.8	1.0	1.0	2.5	1.5
Nationwide	16.8	19.3	19.7	21.0	20.0	20.7	18.8	26.3
TOTAL CURRENT HEALTH EXPENDITURE	100.0	100.0	100.0	100.0	100.0	100.0	100.0	100.0

Source: Philippine Statistics Authority

Table 37

TOTAL HEALTH EXPENDITURE, 2014-2021

Levels (in million PhP)

Total Health Expenditure	2014	2015	2016	2017	2018	2019 ^f	2020 ^f	2021
Current Health Expenditure	489,066.91	543,581.64	598,461.98	655,714.20	722,172.57	813,204.01	917,153.16	1,086,991.64
Gross Capital Formation	42,306.93	63,579.22	73,645.72	84,411.18	126,509.16	84,389.61	88,541.73	71,150.57
TOTAL HEALTH EXPENDITURE	531,373.83	607,160.86	672,107.70	740,125.38	848,681.73	897,593.62	1,005,694.90	1,158,142.21

Table 38

TOTAL HEALTH EXPENDITURE, 2014-2021

Growth rates (in percent)

Total Health Expenditure	2014-15	2015-16	2016-17	2017-18	2018-19 ^f	2019 ^f -20 ^f	2020 ^f -21
Current Health Expenditure	11.1	10.1	9.6	10.1	12.6	12.8	18.5
Gross Capital Formation	50.3	15.8	14.6	49.9	-33.3	4.9	-19.6
TOTAL HEALTH EXPENDITURE	14.3	10.7	10.1	14.7	5.8	12.0	15.2

Table 39

TOTAL HEALTH EXPENDITURE, 2014-2021

Percent share to total (in percent)

Total Health Expenditure	2014	2015	2016	2017	2018	2019 ^f	2020 ^f	2021
Current Health Expenditure	92.0	89.5	89.0	88.6	85.1	90.6	91.2	93.9
Gross Capital Formation	8.0	10.5	11.0	11.4	14.9	9.4	8.8	6.1
TOTAL HEALTH EXPENDITURE	100.0	100.0	100.0	100.0	100.0	100.0	100.0	100.0

Source: Philippine Statistics Authority

Table 40 Derived indicators
TOTAL HEALTH EXPENDITURE (THE) AND GROSS DOMESTIC PRODUCT (GDP) AT CURRENT PRICES, 2014-2021
in million PhP

Year	Total Health Expenditure ¹	Growth rate	Gross Domestic Product ²	Growth rate	Share of THE to GDP (in percent)
2014	531,373.83		13,206,828.25		4.0
2015	607,160.86	14.3	13,944,157.45	5.6	4.4
2016	672,107.70	10.7	15,132,381.47	8.5	4.4
2017	740,125.38	10.1	16,556,651.08	9.4	4.5
2018	848,681.73	14.7	18,265,190.26	10.3	4.6
2019 ^f	897,593.62	5.8	19,517,863.17	6.9	4.6
2020 ^f	1,005,694.90	12.0	17,951,573.57	-8.0	5.6
2021	1,158,142.21	15.2	19,410,568.06	8.1	6.0

¹Table 37 Total Health Expenditure

²National Accounts of the Philippines
Source: Philippine Statistics Authority

Table 41 Derived indicators
HOUSEHOLD OUT-OF-POCKET PAYMENT (OOP) AND HOUSEHOLD FINAL CONSUMPTION EXPENDITURE (HFCE) AT CURRENT PRICES, 2014-2021
in million PhP

Year	Household out-of-pocket payment ¹	Growth rate	Household Final Consumption Expenditure ²	Growth rate	Share of OOP to HFCE (in percent)
2014	256,156.99		9,413,037.49		2.7
2015	278,197.46	8.6	10,105,733.62	7.4	2.8
2016	302,175.91	8.6	10,979,085.76	8.6	2.8
2017	328,827.96	8.8	11,950,863.58	8.9	2.8
2018	364,241.10	10.8	13,250,084.43	10.9	2.7
2019 ^f	396,736.85	8.9	14,288,332.66	7.8	2.8
2020 ^f	412,973.34	4.1	13,476,075.39	-5.7	3.1
2021	451,001.46	9.2	14,610,149.18	8.4	3.1

¹Table 10 Current Health Expenditure by Health Financing Scheme

²National Accounts of the Philippines
Source: Philippine Statistics Authority

Table 42 Derived indicators
HEALTH CAPITAL FORMATION EXPENDITURE (HCFE) AND GROSS FIXED CAPITAL FORMATION (GFCF) AT CURRENT PRICES, 2014-2021
in million PhP

Year	Health Capital Formation Expenditure ¹	Growth rate	Gross Fixed Capital Formation ²	Growth rate	Share of HCFE to GFCF (in percent)
2014	42,306.93		2,755,231.40		1.5
2015	63,579.22	50.3	3,100,015.36	12.5	2.1
2016	73,645.72	15.8	3,782,584.49	22.0	1.9
2017	84,411.18	14.6	4,245,610.15	12.2	2.0
2018 ^f	126,509.16	49.9	4,983,346.47	17.4	2.5
2019 ^f	84,389.61	-33.3	5,300,100.18	6.4	1.6
2020 ^f	88,541.73	4.9	3,824,091.25	-27.8	2.3
2021	71,150.57	-19.6	4,327,283.23	13.2	1.6

¹Table 19 Health Capital Formation Expenditure

²National Accounts of the Philippines
Source: Philippine Statistics Authority

Table 43
CURRENT HEALTH EXPENDITURE PER CAPITA , 2014-2021

Current Health Expenditure	2014	2015	2016	2017	2018	2019 ^f	2020 ^f	2021
Current Health Expenditure Per Capita	4,924.41	4,850.25	5,301.67	5,745.09	6,952.59	7,586.56	8,411.52	9,839.23

Table 44
CURRENT HEALTH EXPENDITURE PER CAPITA , 2014-2021

Current Health Expenditure	2014-15	2015-16	2016-17	2017-18	2018-19 ^f	2019 ^f -20 ^f	2020 ^f -21
Current Health Expenditure Per Capita	-1.5	9.3	8.4	21.0	9.1	10.9	17.0

Source: Philippine Statistics Authority

Note: Population data for 2014 is based on adjusted 2000 and 2010 based population projections.
While population data for 2015 to 2019 are based on the 2015 based population projections.
Actual population counts from 2020 Census of Population and Housing (CPH) were used in 2020.
Population data for 2021 are based on the updated 2015 based population projection results.

Table 45

TOTAL HEALTH EXPENDITURE, 1991-1998

Backcasted Levels (in million PHP)

	1991	1992	1993	1994	1995	1996	1997	1998
Total Health Expenditure	40,323.08	44,615.69	53,333.83	61,535.37	73,624.39	86,150.55	98,361.62	105,779.45

TOTAL HEALTH EXPENDITURE, 1999-2006

Backcasted Levels (in million PHP)

	1999	2000	2001	2002	2003	2004	2005	2006
Total Health Expenditure	117,395.99	128,689.60	130,582.57	131,233.05	165,390.82	185,114.13	202,446.87	220,829.52

TOTAL HEALTH EXPENDITURE, 2007-2013

Backcasted Levels (in million PHP)

	2007	2008	2009	2010	2011	2012	2013
Total Health Expenditure	239,102.98	268,546.06	304,524.82	338,933.54	383,629.91	430,899.98	481,420.01

Table 46

TOTAL HEALTH EXPENDITURE, 1991-1999

Growth rates (in percent)

	1991-92	1992-93	1993-94	1994-95	1995-96	1996-97	1997-98	1998-99
Total Health Expenditure	10.6	19.5	15.4	19.6	17.0	14.2	7.5	11.0

TOTAL HEALTH EXPENDITURE, 1999-2007

Growth rates (in percent)

	1999-00	2000-01	2001-02	2002-03	2003-04	2004-05	2005-06	2006-07
Total Health Expenditure	9.6	1.5	0.5	26.0	11.9	9.4	9.1	8.3

TOTAL HEALTH EXPENDITURE, 2007-2013

Growth rates (in percent)

	2007-08	2008-09	2009-10	2010-11	2011-12	2012-13
Total Health Expenditure	9.6	1.5	0.5	26.0	11.9	9.4

Source: Philippine Statistics Authority

TECHNICAL NOTES

TECHNICAL NOTES

2021 Philippine National Health Accounts

I. Introduction

The Philippine National Health Accounts (PNHA) provides information on health care spending in the country. It provides data in determining whether the aggregate health care spending from all sources is adequate to meet basic requirements and identifies probable areas as inefficiencies in allocating health care resources.

The System of Health Accounts (SHA) 2011 provides a standard for classifying health expenditures according to three (3) axes: consumption, provision, and financing. It gives guidance and methodological support for the compilation of health accounts, which seeks to describe the health care system from an expenditure perspective both for international and national purposes. The SHA 2011 is the international standard for health accounting (OECD, Eurostat, and WHO 2011) which presents a multi-dimensional approach to analyze the structure of health in a country.

II. Data and Data Sources

Health expenditure in the PNHA is compiled by component. Components generally correspond to financing agents (FA) or subcategories of FAs. The components have been primarily defined to correspond to expenditure core data sets. These are the same core data sources used in the previous version of PNHA. The succeeding notes describe the coverage, data sources, estimation methods, and distribution keys data sources by component of the health expenditures of the PNHA.

II.1 National government (Department of Health)/ Domestic revenue-based

Source Agency and Publication/ Data Inputs:

- *Commission on Audit (COA)*: Annual Financial Report of the National Government, Annual Financial Report of the Government Owned and/or Controlled Corporations, Financial Statements of the four Specialty Hospitals (i.e., Philippine Heart Center (PHC), Philippine Children's Medical Center (PCMC), Lung Center of the Philippines (LCP), and National Kidney and Transplant Institute (NKTl)).
- *Department of Budget and Management (DBM)*: National Expenditure Program (NEP), Budget of Expenditures and Sources of Financing (BESF)

Distribution Keys:

- Distribution of the general population by income quintile from the 2015, 2018, and 2021 Family Income and Expenditure Survey (FIES)
- Distribution of total billing by disease from Philippine Health Insurance Corporation (PhilHealth) database for users of government hospitals

- Distribution of total billing by age/sex from PhilHealth database for users of government hospitals
- Distribution of general population by age/sex from Census of Population and Housing (CPH)

II.2 National government (Other agencies)

Source Agency and Publication/ Data Inputs:

- COA: Annual Financial Report of the National Government
- DBM: NEP, BESF

Distribution Keys:

- Distribution of the general population by income quintile from APIS
- Distribution of total billing by disease from PhilHealth database for users of government hospitals
- Distribution of total billing by age/sex from PhilHealth database for users of government hospitals.
- Distribution of general population by age/sex from Census of Population and Housing

II.3 Foreign-assisted projects (FAPs)

Source Agency and Publication/ Data Inputs:

- DOH-BIHC: Profile and Status of FAPs
- NEDA: List of Active Official Development Assistance (ODA) Loans and Grants
- DBM: BESF

II.4 Local government

Source Agency and Publication/ Data Inputs:

- COA: Annual Financial Report for Local Government, Financial Statements of LGUs
- DOF: Bureau of Local Government Finance (BLGF), Annual Statement of Receipts and Expenditures and Health, Nutrition and Population Control by LGU Type

Distribution Keys:

- Distribution of the general population by income quintile from the 2015, 2018, and 2021 Family Income and Expenditure Survey (FIES)
- Distribution of total billing by disease for users of government hospitals from PhilHealth database
- Distribution of visits by disease using Field Health Service Information System (FHSIS) data

- Distribution of total billing by age/sex for users of government hospitals from PhilHealth database
- Distribution of population age/sex from Census of Population and Housing (CPH)

II.5 Social security agencies/PhilHealth

Source Agency and Publication/ Data Inputs:

- *PhilHealth*: Annual Report/Audited Financial Statements, Stats and Charts Report, Claims Database Tabulations
- *DBM*: BESF
- *COA*: AFR

Distribution Keys:

- Distributions of PhilHealth contributions according to the contribution schemes of the government, private and individually-paying members – one distribution key per program
- Distribution of PhilHealth claims paid by region from PhilHealth database
- Distribution of the general population by income quintile from FIES.

II.6 Social security agencies/SSS, GSIS (Employees' Compensation Insurance Fund)

Source Agency and Publication/ Data Inputs:

- *Employees' Compensation Commission (ECC)*: Benefit claims of Social Security System (SSS) and Government Service Insurance System (GSIS) that are for medical and rehabilitation services purposes (submission upon request of PSA)
- *Government Service Insurance System (GSIS)*: Statement of Claims and Benefits Paid – Employees Compensation Insurance Fund (submission upon request of PSA)

Distribution Keys:

- Distribution of employee and employer share of SSS and GSIS

II.7 Insurance corporations/Life and non-life insurance corporations

Source Agency and Publication/ Data Inputs:

- *Insurance Commission (IC)*: Annual Report, financial data on insurance operations and health benefit payments

Distribution Keys:

- Distribution of persons covered by private health insurance by quintile from the FIES (2015, 2018 and 2021)

- Distribution of benefit claims for the Private Sector Program by disease from PhilHealth database
- Distribution of benefit claims for the Private Sector Program by age/sex from PhilHealth database
- Distribution of benefit claims for the Private Sector Program by region from PhilHealth database
- Distribution of primary and intermediate inputs from the 2018 Supply and Use Tables (SUT)

II.8 Corporations (Other than insurance corporations)/Health maintenance organizations (HMOs)

Source Agency and Publication/ Data Inputs:

- *Insurance Commission (IC)*: Annual Report on HMOs, health benefits payments and administration costs
- Securities and Exchange Commission (SEC): financial statements (FS) of HMOs

Distribution Keys:

- Distribution of persons covered by private health insurance by income quintile from FIES (2015, 2018, and 2021)
- Distribution of benefit claims of the Private Sector Program by disease from PhilHealth database
- Distribution of benefit claims for the Private Sector Program by age/sex from PhilHealth database
- Distribution of benefit claims for the Private Sector Program by region from PhilHealth database

II.9 Households

Source Agency and Publication/ Data Inputs:

- *Philippine Statistics Authority (PSA)*: FIES, data on the proportion of medical care expenditure to total household expenditure
- *PSA*: data on household final consumption expenditure (HFCE) from the National Accounts of the Philippines (NAP)

Distribution Keys:

- Distribution of primary and intermediate inputs from the 2018 SUT
- Distribution of total billing of users of government and private hospitals by age/sex from PhilHealth database
- Distribution of total billing of users of government and private hospitals by disease from PhilHealth database
- Distribution of total billing of users of ambulatory health care facilities and private hospitals by age/sex from PhilHealth database
- Distribution of total billing of users of ambulatory health care facilities by disease from PhilHealth database

II.10 Corporations (other than providers of health care)/ Government corporations

Source Agency and Publication/ Data Inputs:

- COA: Philippine Charity Sweepstakes Office (PCSO) Annual Audit Report
- PCSO: Report of Health Expenditures (issued upon request)
- *Philippine Amusement and Gaming Corporation (PAGCOR)*: Report of Health Expenditures (issued upon request)

II.11 Corporations (other than providers of health care)/ Private establishments (employee health care)

Source Agency and Publication/ Data Inputs:

- PSA: 2018 SUT and data on private human health from NAP

Distribution Keys:

- Distribution of persons covered by private health insurance by income quintile from FIES (2015, 2018 and 2021)
- Distribution of benefit claims for the Private Sector Program by age/sex from PhilHealth database

III. Methodology

1. The Philippine National Health Accounts based on the System of Health Accounts 2011 measures expenditures for the final consumption of health goods and services. It covers expenditures on activities with the primary purpose of improving, maintaining, and preventing the deterioration of health and mitigating the consequences of ill-health of individuals in the Philippines for a given year through the application of qualified health knowledge. The health accounts boundary is determined based on the following criteria: (a) primary purpose, (b) use of qualified health knowledge, (c) expenditure for resident persons (spatial boundary), (d) expenditure incurred in a specified year (time boundary), and (e) transacted (produced and paid for).
2. Current health expenditures (CHE) and health capital formation (HK) are estimated as two separate aggregates of the PNHA-SHA.
3. Health expenditures are classified into 12 schemes. The expenditure classifications under each of the three major dimensions of SHA 2011 are listed as follows:

Financing Dimension

- Financing sources (FS)
- Institutional units of financing sources (FS.RI);
- Financing schemes (HF); and
- Financing agents (FA).

Provision Dimension

- Providers (HP);
- Factors of provision (FP); and
- Capital formation (HK).

Consumption Dimension

- Functions (HC); and
- Beneficiary characteristics.

4. There are health expenditure items that could not be classified into the given schemes above due to lack of detail in the existing data. The breakdowns of these expenditure items are estimated using percentage distributions referred to as distribution keys. Distribution keys were prepared using data from research studies, statistical reports, administrative reports, censuses, household survey tabulations, and/or other data sources.
5. Health expenditures classified under the schemes mentioned above are reported and summarized in a series of two-dimensional tables.

Health expenditure in the PNHA is compiled by component. Components generally correspond to financing agents (FA) or subcategories of FAs. The components have been primarily defined to correspond to expenditure core data sets. These are the same core data sources used in the previous version of the PNHA. The succeeding notes describe the coverage, data sources, estimation methods, and distribution keys data sources by component of the health expenditures of the PNHA-SHA.

III.1. National government (Department of Health)/Domestic revenue based

Coverage:

- These are the expenditures of national government agencies for health-related activities funded by appropriations, with health activities identified based on agency mandate or activity descriptions.

Estimation methodology:

- Activities under the DOH in NEP are scaled up using the ratio between the agency-level obligations incurred stated in the COA-AFR and agency-level programmed expenditures stated in NEP.
- In the estimation of the national government spending on the four specialty hospitals, the expenses for Personnel Services and Maintenance and Other Operating Expenses reported in their individual Statement of Income and Expenditures is used.
- In the estimation of the health capital formation of national government, actual health expenditure on capital outlays reported in the BESF is used.

III.2. National government (Other agencies)

Coverage:

- These are expenditures of other national government agencies whose mandates are entirely health-related (e.g., Food and Nutrition Research Institute (FNRI), Philippine Council for Health Research and Development (PCHRD), etc.); and expenditures of other government agencies identified as health-related based on stated purpose.

Estimation methodology:

- All health-related activities from identified government agencies in the NEP are scaled up using the ratio between the agency-level obligations incurred stated in the COA-AFR and agency-level programmed expenditures stated in the NEP.
- In the estimation of the health capital formation of other national government agencies, actual health expenditures on capital outlays reported in the BESF are employed

III.3. Foreign-assisted projects (FAPs)

Coverage:

- Expenditures (loans or grants proceeds) of all Foreign Assisted Projects from foreign institutions which are intended primarily for health purposes.

Estimation methodology:

- Current health expenditures from foreign institutions are estimated using actual expenditures/disbursement data of projects for a specific year as reported in the DOH Report. Expenditures of health projects reported in the NEDA ODA Report not found in the DOH Report are also included.
- The amount is then converted to Philippine Peso (PhP) using the exchange rate from BSP.
- FAPs reported in the DBM BESF are used to validate and supplement the data from DOH and NEDA as necessary.

III.4. Local government

Coverage:

- These are the expenditures of provincial, city, and municipal hospitals, as well as expenditures of local governments for health, nutrition, family planning services, health governance, and general administration.

Estimation methodology:

- Health expenditures of provinces, cities, and municipalities are estimated by applying the health shares to the total expenditures of each level of LGUs reported in the COA Annual Report.

- The health shares are computed using BLGF data. The health expenditures (Health, Nutrition, and Population Control) are divided by the total expenditures for each level of LGU.
- The expenditures for hospitals, health services (health centers), and general administration for health are estimated using detailed data from BLGF.

III.5. Social security agencies/ PhilHealth

Coverage:

- These are the benefit payments of PhilHealth and all its other expenditures.

Estimation methodology:

- Data on claims payment for each type of PhilHealth Program based on Claims Database Tabulations are adjusted according on the totals by program as reported in the PhilHealth Audited Financial Statements/Annual Reports.

III.6. Social security agencies/ SSS, GSIS (Employees Compensation Insurance Fund)

Coverage:

- These are the benefit claims payments from the ECIF of SSS and GSIS that are for medical and rehabilitation services.

Estimation Methodology:

- EC benefit claims payments data for medical and rehabilitation services from reports provided by GSIS and SSS are used as reported.

III.7. Insurance corporations/ Life and non-life insurance corporations

Coverage:

- These are the health benefits payments by both life and non-life insurance companies and the administrative costs attributed with health insurance activities.

Estimation Methodology:

- Expenditures of private insurance companies for health and accident benefit payments are sourced directly from the IC annual report.
- General administration and operating costs of health and accident insurance activities are estimated by multiplying the proportion of health and accident premiums to the total general and other operating expenditures of the same company.

III.8. Corporations (Other than insurance corporations)/ Health maintenance organizations (HMOs)

Coverage:

- Total expenditures of HMOs submitted (a) to the Insurance Commission (IC), and (b) the Securities and Exchange Commission (SEC).

Estimation Methodology:

- Expenditures of HMOs for health benefit payments and for general administration are taken directly from the IC annual report. These are being supplemented by individual financial statements of HMOs.

III.9. Households

Coverage:

- These are the out-of-pocket expenditures of households for goods and services within the health accounts boundary. In the Family Income and Expenditures Survey (FIES), these include the following: medicines, food supplements, other medical products, therapeutic appliances, outpatient medical care, dental care, diagnostic services, and private and public hospital care.

Estimation Methodology:

- The private household out-of-pocket health expenditures are estimated by applying the proportion of health expenditures derived from the FIES to the HFCE level from the NAP. HFCE levels are adjusted using the share of health expenditures to total expenditures.
- For non-FIES years, household expenditures are estimated by extrapolating the FIES-year estimate with the trend of the HFCE Health less benefits from PhilHealth, Insurance, and HMOs.

III.10. Corporations (Other than providers of health care)/ Government corporations

Coverage:

- These are the expenditures for health care by the Philippine Charity Sweepstakes Office (PCSO) and the Philippine Amusement and Gaming Corporation (PAGCOR). PCSO health expenditures include those of the Individual Medical Assistance Program (IMAP) and the Charity Clinic Department. PAGCOR health expenditure includes subsidies for health (individual medical assistance and assistance to hospitals, NGOs and foundations), hospitalization (paid directly to hospitals), medical missions, wheelchairs, medical/laboratory equipment and medicines.

Estimation Methodology:

- Data from the reports and submissions of the PCSO and PAGCOR are used as reported.

III.11. Corporations (Other than providers of health care)/ Private corporations (Employee health care)

Coverage:

- These are expenditures of private establishments for employee health care through, among others, (a) in-house provision of health care (personnel and other facility costs), (b) in-house provision of drugs and medicines, (c) cost of retained health care providers, and (d) fitness/health programs.

Estimation Methodology:

- For the benchmark estimate, health expenditures of private corporations are estimated by multiplying the average health expenditure per establishment with the number of firms by employment size and by industry group for the current year. Total expenditure is estimated as the sum of all expenditures of private establishments across all industries.
- For non-benchmark years, the estimates from the benchmark year is extrapolated with the trend of health inputs by industry, derived by multiplying Gross Value Added (GVA) with the technical Coefficient of Human Health Intermediate inputs in the 2018 SUT.

IV. Concepts and Definition of Terms

The Philippine National Health Accounts not only provides the Total Health Expenditures (THE) of the country, but it also differentiates between two (2) aggregates of health, namely Current Health Expenditures (CHE) and Health Capital Formation (HK). PNHA-SHA consists of a total of 44 tables: 36 tables on CHE, three (3) on HK and five (5) on derived indicators.

Institutional units of financing sources (FSRI): Institutional units that provide revenues to health financing schemes (a “Reporting Item” or RI under the Financing Sources or FS dimension).

CODES	DESCRIPTIONS
FS.RI.1.1	Government
FS.RI.1.2	Corporations
FS.RI.1.3	Households
FS.RI.1.5	Rest of the world
FS.RI.1.nec	Unspecified institutional units providing revenues to financing schemes (n.e.c.)

Financing sources (FS): The revenues of the health financing schemes received or collected through specific contribution mechanisms.

CODES	DESCRIPTIONS
FS.1	Transfers from government domestic revenue (allocated to health purposes)
FS.2	Transfers distributed by government from foreign origin
FS.3	Social insurance contributions
FS.5	Voluntary prepayment
FS.6	Other domestic revenues

Financing schemes (HF): Components of a country's health financial system that channel revenues received and use those funds to pay for, or purchase health care goods, services, and activities.

CODES	DESCRIPTIONS
HF.1	Government schemes and compulsory contributory health care financing schemes
HF.2	Voluntary health care payment schemes
HF.3	Household out-of-pocket payment

Financing agents (FA): Institutional units that manage health financing schemes.

CODES	DESCRIPTIONS
FA.1	General government
FA.2	Insurance corporations
FA.3	Corporations (Other than insurance corporations)
FA.5	Households

Health care providers (HP): Entities that receive money in exchange for, or in anticipation of producing the activities inside the health accounts boundary.

CODES	DESCRIPTIONS
HP.1	Hospitals
HP.2	Mental health and substance abuse facilities
HP.3	Providers of ambulatory health care
HP.4	Providers of ancillary services
HP.5	Retailers and other providers of medical goods
HP.6	Providers of preventive care
HP.7	Providers of health care system administration and financing
HP.nec	Unspecified health care providers (n.e.c.)

Factors of health care provision (FP): The types of inputs used in producing the goods and services or activities covered by the health accounts boundary.

CODES	DESCRIPTIONS
FP.1	Compensation of employees
FP.3	Materials and services used
FP.4	Consumption of fixed capital

FP.5	Other items of spending on inputs
FP.nec	Unspecified factors of health care provision (n.e.c.)

Health care functions (HC): The types of goods and services provided and activities performed within the health accounts boundary.

CODES	DESCRIPTIONS
HC.1	Curative care
HC.2	Rehabilitative care
HC.4	Ancillary services (non-specified by function)
HC.5	Medical goods (non-specified by function)
HC.6	Preventive care
HC.7	Governance, and health system and financing administration

Beneficiary characteristics: The attributes of those who receive health care goods and services or benefit from health activities. There are four (4) classifications of characteristics in the PNHA-SHA. These include disease group (**DIS**), income quintile group (**INC**), age/sex group (**AGE**), and region of residence (**REG**).

CODES	DESCRIPTIONS
DIS.1	Infectious and parasitic diseases
DIS.2	Reproductive health
DIS.3	Nutritional deficiencies
DIS.4	Noncommunicable diseases
DIS.5	Injuries
DIS.6	Non-disease specific
DIS.nec	Other and unspecified diseases/conditions (n.e.c.)

CODES	DESCRIPTIONS
INC.1	First quintile
INC.2	Second quintile
INC.3	Third quintile
INC.4	Fourth quintile
INC.5	Fifth quintile

CODES	DESCRIPTIONS
AGE.1	0 Male
AGE.2	0 Female
AGE.3	1-4 Male
AGE.4	1-4 Female
AGE.5	5-9 Male
AGE.6	5-9 Female
AGE.7	10-14 Male
AGE.8	10-14 Female
AGE.9	15-19 Male
AGE.10	15-19 Female
AGE.11	20-29 Male
AGE.12	20-29 Female
AGE.13	30-39 Male

AGE.14	30-39 Female
AGE.15	40-49 Male
AGE.16	40-49 Female
AGE.17	50-59 Male
AGE.18	50-59 Female
AGE.19	60-64 Male
AGE.20	60-64 Female
AGE.21	65 and over Male
AGE.22	65 and over Female

CODES	DESCRIPTIONS
REG.1	I-Ilocos Region
REG.2	II-Cagayan Valley
REG.3	III-Central Luzon
REG.4	IVA-CALABARZON
REG.5	V-Bicol Region
REG.6	VI-Western Visayas
REG.7	VII-Central Visayas
REG.8	VIII-Eastern Visayas
REG.9	IX-Zamboanga Peninsula
REG.10	X-Northern Mindanao
REG.11	XI- Davao Region
REG.12	XII-SOCCSKSARGEN
REG.13	NCR-National Capital Region
REG.14	CAR-Cordillera Administrative Region
REG.15	BARMM-Bangsamoro Autonomous Region in Muslim Mindanao
REG.16	XIII-Caraga
REG.17	MIMAROPA
REG.99	Nationwide

Gross fixed capital formation (HK): The type of assets that health providers have acquired during the accounting period and that are used repeatedly or continuously for more than one year in the production of health services; memorandum items (HKR) reported under the capital formation account include health research and training.

CODES	DESCRIPTIONS
HK.1	Gross capital formation
HK.1.1	Gross fixed capital formation
HK.1.1.1	Infrastructure
HK.1.1.2	Machinery and equipment
HK.1.1.3	Intellectual property products

V. Dissemination of Results and Revision

The schedule of release of PNHA is ten (10) months after the reference period. A press release, publication, statistical tables, and infographic are posted on the PSA website.

VI. Citation

Philippine Statistics Authority. (2022). Technical Notes on *Philippine National Health Accounts*. <https://psa.gov.ph/technical-notes/pnha-2021>

VII. Contact Information

Mr. Gerald Junne L. Clariño

Chief Statistical Specialist
Satellite Accounts Division
(02) 8376-2019
g.clarino@psa.gov.ph

For data request, you may contact:
Knowledge Management and Communications Division
(02) 8462-6600 loc. 820
info@psa.gov.ph | kmcd.staff@psa.gov.ph

PHILIPPINE STATISTICS AUTHORITY

DENNIS S. MAPA, Ph.D.

Undersecretary

National Statistician and Civil Registrar General

DIVINA GRACIA L. DEL PRADO, Ph.D.

(Assistant National Statistician)

Officer-in-Charge, Deputy National Statistician

Sectoral Statistics Office

VIVIAN R. ILARINA

Assistant National Statistician

Macroeconomic Accounts Service

SATELLITE ACCOUNTS DIVISION

GERALD JUNNE L. CLARIÑO

Chief Statistical Specialist

Satellite Accounts Division

Technical Staff

Lead:

CARLYN C. PALENCIA

ANGELICA E. SAMARTINO

MARIO M. MARPA

Other Technical Staff:

ALMA S. BELLO

STEPHANIE ROSE R. MOSCOSO

KRISTINA B. YASONA

RICA D. CORPUZ

JOERMINE ELAINE P. ROBREDO

JOHN LIBBY A. PIO

PRECIOUS JOY B. PAGULAYAN