



REPUBLIC OF THE PHILIPPINES

**PHILIPPINE STATISTICS AUTHORITY**

# Value of Production in Philippine Agriculture and Fisheries

Third Quarter 2021



**The Value of Production in Philippine Agriculture and Fisheries**  
is a quarterly publication prepared by the Agricultural Accounts Division of the  
PHILIPPINE STATISTICS AUTHORITY (PSA)

For technical inquiries, please direct calls at:  
(+632) 8376-1954

### **TERMS OF USE OF PSA PUBLICATIONS**

The PSA reserves its exclusive right to reproduce all its publications in whatever form.

- Any part of this publication should not be reproduced, recopied, lent or repackaged for other parties for any commercial purposes without written permission from the PSA.
- Any part of this publication may only be reproduced for internal use of the recipient/customer company.
- Should any portion of the data in this publication are to be included in a report/article, the source of the data, the title of the publication and the PSA as publisher should always be cited.
- Any information derived from the manipulation of data contained in the publication will no longer be the responsibility of PSA.

Published by the  
Philippine Statistics Authority  
PSA Complex, East Avenue  
Diliman, Quezon City  
Philippines 1101

November 2021

**The Value of Production in Philippine Agriculture and Fisheries**  
is available in electronic format (Excel/Word/PDF).

## FOREWORD

The Philippine Statistics Authority (PSA) releases the Third Quarter 2021 Value of Production in Philippine Agriculture and Fisheries.

The report covers all agricultural commodities, highlighting 22 commodities for crops, nine commodities for livestock and poultry, and 20 commodities for fisheries. It presents the value of agricultural production at constant 2018 prices and at current prices.

PSA welcomes comments and suggestions from its data users, clients, and stakeholders for the improvement of this report.



**DENNIS S. MAPA, Ph.D.**

Undersecretary

National Statistician and Civil Registrar General

Quezon City, Philippines  
November 2021

## **Table of Contents**

Foreword	i
Table of Contents	ii
Technical Notes	v
Press Release	viii
Infographics	ix
Highlights	1
List of Tables	
Table 1a. Value of Production in Philippine Agriculture and Fisheries at Constant 2018 Prices First Quarter 2019 to Third Quarter 2021	3
Table 1b. Value of Crop Production at Constant 2018 Prices First Quarter 2019 to Third Quarter 2021	3
Table 1c. Value of Livestock and Poultry Production at Constant 2018 Prices First Quarter 2019 to Third Quarter 2021	4
Table 1d. Value of Fisheries Production at Constant 2018 Prices First Quarter 2019 to Third Quarter 2021	4
Table 2a. Growth Rates of Value of Production in Philippine Agriculture and Fisheries at Constant 2018 Prices First Quarter 2019 to Third Quarter 2021	5
Table 2b. Growth Rates of Value of Crop Production at Constant 2018 Prices First Quarter 2019 to Third Quarter 2021	5
Table 2c. Growth Rates of Value of Livestock and Poultry Production at Constant 2018 Prices First Quarter 2019 to Third Quarter 2021	6
Table 2d. Growth Rates of Value of Fisheries Production at Constant 2018 Prices First Quarter 2019 to Third Quarter 2021	6
Table 3a. Percent Distribution of Value of Production in Philippine Agriculture and Fisheries at Constant 2018 Prices First Quarter 2019 to Third Quarter 2021	7
Table 3b. Percent Distribution of Value of Crop Production at Constant 2018 Prices First Quarter 2019 to Third Quarter 2021	7
Table 3c. Percent Distribution of Value of Livestock and Poultry Production at Constant 2018 Prices First Quarter 2019 to Third Quarter 2021	8
Table 3d. Percent Distribution of Value of Fisheries Production at Constant 2018 Prices First Quarter 2019 to Third Quarter 2021	8

---

**VALUE OF PRODUCTION IN PHILIPPINE AGRICULTURE AND FISHERIES**

---

Table 4a.	Value of Production in Philippine Agriculture and Fisheries at Current Prices First Quarter 2019 to Third Quarter 2021	9
Table 4b.	Value of Crop Production at Current Prices First Quarter 2019 to Third Quarter 2021	9
Table 4c.	Value of Livestock and Poultry Production at Current Prices First Quarter 2019 to Third Quarter 2021	10
Table 4d.	Value of Fisheries Production at Current Prices First Quarter 2019 to Third Quarter 2021	10
Table 5a.	Growth Rates of Value of Production in Philippine Agriculture and Fisheries at Current Prices First Quarter 2019 to Third Quarter 2021	11
Table 5b.	Growth Rates of Value of Crop Production at Current Prices First Quarter 2019 to Third Quarter 2021	11
Table 5c.	Growth Rates of Value of Livestock and Poultry Production at Current Prices First Quarter 2019 to Third Quarter 2021	12
Table 5d.	Growth Rates of Value of Fisheries Production at Current Prices First Quarter 2019 to Third Quarter 2021	12
Table 6a.	Percent Distribution of Value of Production in Philippine Agriculture and Fisheries at Current Prices First Quarter 2019 to Third Quarter 2021	13
Table 6b.	Percent Distribution of Value of Crop Production at Current Prices First Quarter 2019 to Third Quarter 2021	13
Table 6c.	Percent Distribution of Value of Livestock and Poultry Production at Current Prices First Quarter 2019 to Third Quarter 2021	14
Table 6d.	Percent Distribution of Value of Fisheries Production at Current Prices First Quarter 2019 to Third Quarter 2021	14
Table 7a.	Volume of Crop Production First Quarter 2019 to Third Quarter 2021	15
Table 7b.	Volume of Livestock and Poultry Production First Quarter 2019 to Third Quarter 2021	15
Table 7c.	Volume of Fisheries Production First Quarter 2019 to Third Quarter 2021	16

## VALUE OF PRODUCTION IN PHILIPPINE AGRICULTURE AND FISHERIES

---

Table 8a.	Growth Rates of Volume of Crop Production First Quarter 2019 to Third Quarter 2021	16
Table 8b.	Growth Rates of Volume of Livestock and Poultry Production First Quarter 2019 to Third Quarter 2021	17
Table 8c.	Growth Rates of Volume of Fisheries Production First Quarter 2019 to Third Quarter 2021	17
Table 9a.	Average Farmgate Prices of Crops First Quarter 2019 to Third Quarter 2021	18
Table 9b.	Average Farmgate Prices of Livestock and Poultry First Quarter 2019 to Third Quarter 2021	18
Table 9c.	Average Farmgate Prices of Fisheries First Quarter 2019 to Third Quarter 2021	19
Table 10a.	Growth Rates of Average Farmgate Prices of Crops First Quarter 2019 to Third Quarter 2021	19
Table 10b.	Growth Rates of Average Farmgate Prices of Livestock and Poultry First Quarter 2019 to Third Quarter 2021	20
Table 10c.	Growth Rates of Average Farmgate Prices of Fisheries First Quarter 2019 to Third Quarter 2021	20

**TECHNICAL NOTES ON THE PREPARATION OF VALUE OF PRODUCTION IN PHILIPPINE AGRICULTURE AND FISHERIES REPORT**

The Value of Production in Philippine Agriculture and Fisheries report presents the accomplishments of agriculture and fisheries during a particular reference period. The value of production is at constant 2018 prices and at current prices. The valuation is also done by commodity group (crops, livestock and poultry, and fisheries). These serve as inputs in the estimation of Gross Value Added (GVA) in agriculture and fishery.

The value of production in agriculture and fisheries covers all agricultural commodities, highlighting 22 commodities for crops, nine commodities for livestock and poultry, and 20 commodities for fisheries.

**A. Sources of Basic Data**

The generation of the value of production requires data on volume of production and farmgate prices. These data are sourced from the following PSA surveys and administrative-based records from other government agencies:

Variable	Source
1. Volume of Production by commodity	
a. Crops	Palay Production Survey (PPS)
	Corn Production Survey (CPS)
	Crops Production Survey (CrPS)
b. Livestock and Poultry by commodity	Backyard Livestock and Poultry Survey (BLPS)
	Commercial Livestock and Poultry Survey (CLPS)
c. Fisheries	Quarterly Municipal Fisheries Survey (QMFS)
	Quarterly Inland Fisheries Survey (QIFS)
	Quarterly Commercial Fisheries Survey (QCFS)
	Quarterly Aquaculture Survey (QAqS)
2. Farmgate Prices	
a. Crops	Farm Prices Survey (FPS)
b. Livestock and Poultry	Farm Prices Survey (FPS)
c. Fisheries	QMFS
	QIFS
	QCFS
	QAqS
3. Administrative Data	
a. Volume of Production of Centrifugal Sugar and Raw Sugar	Sugar Regulatory Administration (SRA)
b. Dairy Production and Price for Goat and Cattle	National Dairy Authority (NDA)
c. Dairy Production and Price for Carabao	Philippine Carabao Center (PCC)
d. Volume and Value of Commercial Fish Unloadings	Philippine Fisheries Development Authority (PFDA), Local Government Units (LGUs) and Privately Managed Landing Centers
e. Volume and Value of Municipal Fish Unloadings	Philippine Fisheries Development Authority (PFDA) and Local Government Units (LGUs)

## B. Estimation Procedure

The valuation of agriculture and fisheries production is prepared quarterly. It is done as follows:

### At Constant 2018 Prices

Valuation at constant prices is done by multiplying the quarterly volume of production of each commodity by the 2018 average farmgate price.

Formula:

$$VP_o = Q_t \times FGP_o$$

Where:

*VP<sub>o</sub>* = Value of production at constant 2018 prices;

*Q<sub>t</sub>* = Volume of production for the current period; and

*FGP<sub>o</sub>* = Farmgate price at constant 2018 prices

### At Current Prices

Valuation at current prices is done by multiplying the quarterly volume of production of each commodity by the average farmgate price during the reference year.

Formula:

$$VP_t = Q_t \times FGP_t$$

Where:

*VP<sub>t</sub>* = Value of production at current prices;

*Q<sub>t</sub>* = Volume of production for the current period; and

*FGP<sub>t</sub>* = Farmgate price at current prices

The average prices of corn, coconut, banana, mango, tobacco, coffee, and onion are weighted using varietal classification, while, cassava price is weighted by its use (i.e., food and industrial).

For sugarcane, there is no available data on sugarcane price. The PSA's Farm Prices Survey (FPS) generates prices of centrifugal sugar per kilogram while the Sugar Regulatory Administration (SRA) releases data on volume of centrifugal sugar and raw sugar. Thus, the farmgate price of sugarcane was derived by multiplying the volume of raw sugar by the price of centrifugal sugar. The resulting value is multiplied by 0.65 to indicate that 65 percent of the total value of raw sugar produced is the value of the product of agriculture. This is based on the prevailing 65-35 planter-miller sharing system. The total value credited to agriculture was divided to the total volume of sugarcane to derive the average price of sugarcane.



To harmonize the product form of coffee for the volume of production and price, conversion is made for the price. The farmgate price of dried coffee beans is multiplied by 60 percent (Food and Agriculture Organization's conversion factor from dried coffee beans to dried coffee berries<sup>1</sup>) to derive the farmgate price of dried coffee berries.

In the case of "other crops", a set of indicator commodities was established. These indicator commodities are used to get the weighted price for "other crops". It is derived by dividing total value of production by the total volume of production of the indicator commodities. This weighted price is used in computing the value of "other crops" production.

The prices of livestock and poultry are weighted using the type of farm (i.e., commercial and backyard).

For fisheries commodities, the prices are derived from the value of production at current prices divided by the volume of production of the reference year.

### C. Definitions

**Value of Production at Constant (2018) Prices** – refers to valuation of transactions, wherein the influence of price changes from the base year (2018) to the current year has been removed.

**Value of Production at Current Prices** - is the value based on prices during the reference year.

<sup>1</sup> Joackim Mutua, *Young Professional*. (December 2000). *Postharvest Handling and Processing of Coffee in African Countries*. Rome: Food and Agriculture Organization of the United Nations.



REPUBLIC OF THE PHILIPPINES  
**PHILIPPINE STATISTICS AUTHORITY**

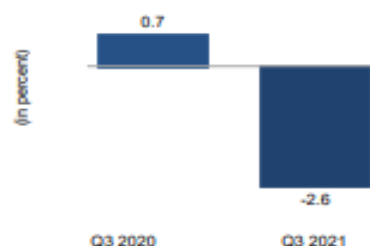
# PRESS RELEASE

## Value of Production in Agriculture and Fisheries Decreased by -2.6 Percent in the Third Quarter of 2021

Date of Release: 08 November 2021, 9:00 AM  
 Reference No. 2021-456

The value of production in agriculture and fisheries at constant 2018 prices decreased by -2.6 percent in the third quarter of 2021. This was due to the drop in crops, livestock, and fisheries production. Meanwhile, poultry recorded increment in production. (Table 2a and Figure 1)

Figure 1. Value of Production in Agriculture and Fisheries at Constant 2018 Prices  
 Growth Rates



Source: Philippine Statistics Authority

Crop production, which contributed 54.0 percent to the total agriculture and fisheries production, contracted by -0.2 percent. Palay production increased by 6.7 percent while corn production declined by -18.6 percent. (Tables 2a, 2b, and 3a)

Livestock, which accounted for 15.3 percent of the total agriculture and fisheries production, recorded a -15.2 percent reduction in production. Hog, the major contributor for livestock production, decreased by -17.8 percent. (Tables 2a, 2c, and 3a)

Poultry production grew by 1.3 percent. It shared 14.6 percent in the total agriculture and fisheries production. Production of chicken eggs and duck eggs increased by 8.1 percent and 7.0 percent, respectively. (Tables 2a, 2c, and 3a)

Fisheries, with a 16.2 percent contribution to the total agriculture and fisheries production, declined by -0.4 percent. Two-digit declines in production were recorded for bigeye tuna (tambakol/bariles) at -41.1 percent, blue crab (alimasag) at -22.1 percent, frigate tuna (tulingan) at -21.1 percent, yellowfin tuna (tambakol/bariles) at -19.9 percent, threadfin bream (bisugo) at -19.1 percent, slipmouth (sapsap) at -12.4 percent, and skipjack (gulyasan) and roundscad (galunggong) at -11.8 percent each. (Tables 2a, 2d, and 3a)

At current prices, the value of production in agriculture and fisheries which amounted to PhP 446.46 billion was 5.2 percent higher than the previous year's level. (Tables 4a and 5a)

**DENNIS S. MAPA, Ph.D.**  
 Undersecretary  
 National Statistician and Civil Registrar General

Attachment:  
 1. Value of Production in Philippine Agriculture and Fisheries, Third Quarter 2021 Full Report



PSA Complex, East Avenue, Diliman, Quezon City, Philippines 1101  
 Telephone: (632) 8938-5267  
 www.psa.gov.ph



# VALUE OF PRODUCTION IN PHILIPPINE AGRICULTURE AND FISHERIES THIRD QUARTER 2021



As of November 2021  
MAS 05-IG-08112021

AT CONSTANT 2018 PRICES  
GROWTH RATES

**-2.6%**

## AGRICULTURE



**-0.2%**

**CROPS**



**-15.2%**

**LIVESTOCK**



**1.3%**

**POULTRY**

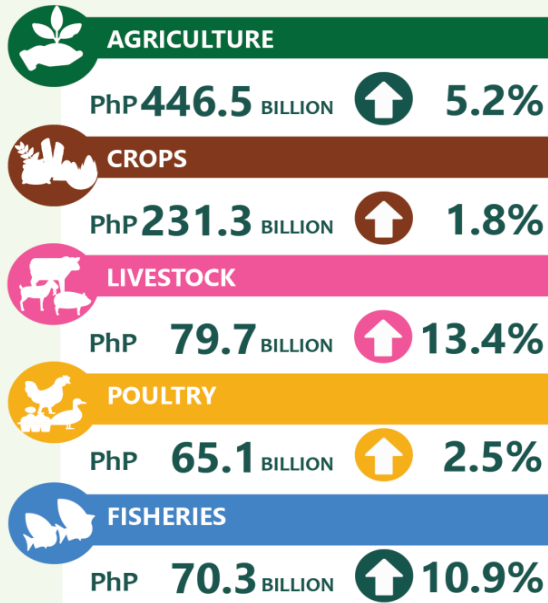


**-0.4%**

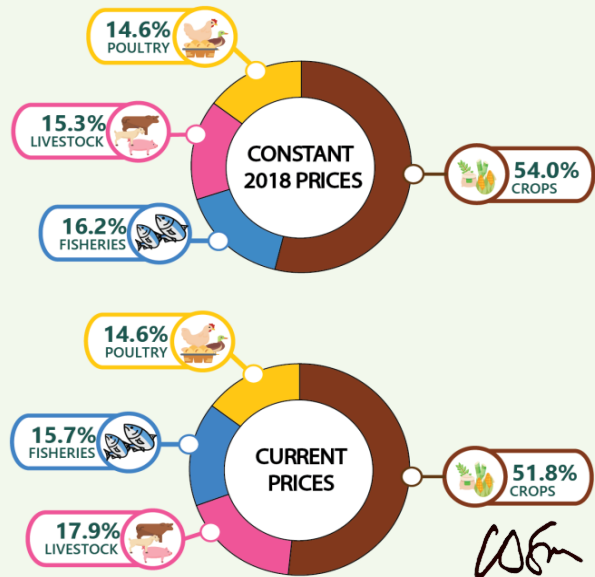
**FISHERIES**



AT CURRENT PRICES  
LEVELS AND GROWTH RATES



PERCENT DISTRIBUTION  
OF VALUE OF PRODUCTION



Details may not add up to totals due to rounding

For Technical Inquiries  
aad.staff@psa.gov.ph

Visit us on  
www.psa.gov.ph

Like us on Facebook  
PhilippineStatisticsAuthority

Follow us on Twitter  
@PSAgovph



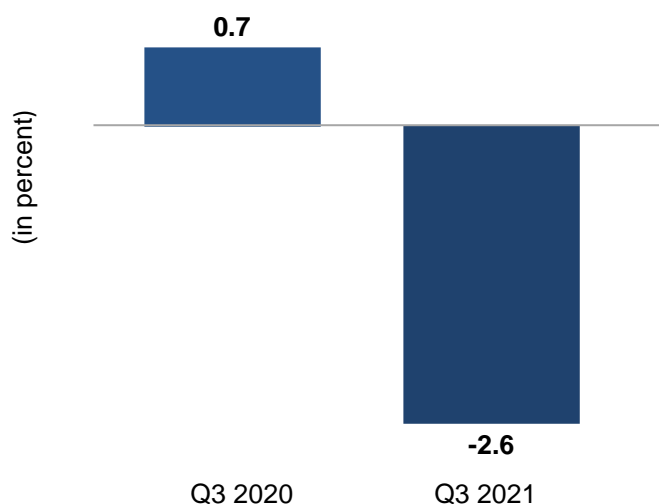
**VALUE OF PRODUCTION  
IN PHILIPPINE  
AGRICULTURE AND  
FISHERIES**



VALUE OF PRODUCTION IN PHILIPPINE AGRICULTURE AND FISHERIES  
THIRD QUARTER 2021

HIGHLIGHTS

Figure 1. Value of Production in Agriculture and Fisheries at Constant 2018 Prices  
Growth Rates  
Q3 2020 and Q3 2021



Source: Philippine Statistics Authority

**The value of production in agriculture and fisheries at constant 2018 prices<sup>1</sup>** dropped by -2.6 percent in the third quarter of 2021. Production declines were noted for crops, livestock, and fisheries, while poultry grew during the period. At current prices, production in agriculture and fisheries was valued at PhP 446.46 billion, an increase of 5.2 percent this quarter. *From January to September 2021, the value of production in agriculture and fisheries at constant 2018 prices went down by -2.5 percent.* (Tables 2a, 4a, and 5a, and Figure 1)

Crop production, which shared 54.0 percent in the total agriculture and fisheries production, declined by -0.2 percent in the third quarter of 2021. Palay production increased by 6.7 percent. Meanwhile, corn production was down by -18.6 percent. Decreases in production were posted for abaca by -21.9 percent, cabbage by -18.1 percent, potato by -13.0 percent, onion by -8.1 percent, mungo by -7.6 percent, eggplant by -5.0 percent, coffee by -4.3 percent, ampalaya by -3.8 percent, cacao by -3.6 percent, and sweet potato by -1.4 percent. Cassava and banana production registered reductions of -0.3 percent and -0.2 percent, respectively.

On the other hand, increase in production levels were registered for sugarcane by 110.8 percent and pineapple by 13.1 percent. Likewise, improvements in production were noted for calamansi by 8.3 percent, tobacco by 3.2 percent, rubber by 2.6 percent, coconut by 1.9 percent, tomato by 1.6 percent, and mango by 0.6 percent. For “other crops”, production inched up by 0.3 percent. At current prices,

<sup>1</sup>All value of production growth rates are at constant 2018 prices

the value of crop production which amounted to PhP 231.33 billion was 1.8 percent higher than the previous year's level. *From January to September 2021, the value of crop production at constant 2018 prices increased by 2.1 percent.* (Tables 2b, 3b, 4b, and 5b)

Production of livestock continued to decline and posted a -15.2 percent contraction in the third quarter of 2021. It shared 15.3 percent in the total agriculture and fisheries production. Declines were noted for hog by -17.8 percent, goat by -7.4 percent, dairy by -3.6 percent, and cattle by -2.5 percent. However, carabao production posted a 9.5 percent expansion during the period. At current prices, the value of livestock production amounted to PhP 79.71 billion or 13.4 percent more this quarter. *For the first nine months of 2021, the value of livestock production at constant 2018 prices declined by -19.4 percent.* (Tables 2c, 3c, 4c, and 5c)

Poultry production, which accounted for 14.6 percent of the total agriculture and fisheries production, increased by 1.3 percent during the period. Production increased for chicken eggs by 8.1 percent and duck eggs by 7.0 percent. On the other hand, reductions in production were noted for duck by -2.1 percent and chicken by -1.4 percent. At current prices, the value of poultry production at PhP 65.13 billion was 2.5 percent higher from the previous year's level. *From January to September 2021, a -1.3 percent decline in the value of production at constant 2018 prices was recorded for poultry.* (Tables 2c, 3c, 4c, and 5c)

Fisheries production, which contributed 16.2 percent to the total agriculture and fisheries production, declined by -0.4 percent in the third quarter of 2021. The decreases in production were noted for bigeye tuna (tambakol/bariles) by -41.1 percent, blue crab (alimasag) by -22.1 percent, frigate tuna (tulingan) by -21.1 percent, yellowfin tuna (tambakol/bariles) by -19.9 percent, threadfin bream (bisugo) by -19.1 percent, slipmouth (sapsap) by -12.4 percent, skipjack (gulyasan) and roundscad (galunggong) by -11.8 percent each, Indian mackerel (alumahan) by -7.8 percent, *Bali sardinella* (tamban) by -5.8 percent, and seaweed by -3.7 percent.

Meanwhile, gains in production were registered for the following fish species: mudcrab (alimango) by 29.2 percent, milkfish (bangus) by 9.9 percent, big-eyed scad (matangbaka) by 9.7 percent, cavalla (talakitok) by 9.4 percent, fimbriated sardines (tunsoy) by 7.0 percent, squid (pusit) by 5.7 percent, tilapia by 5.7 percent, grouper (lapu-lapu) by 3.5 percent, and tiger prawn (sugpo) by 1.6 percent. Collectively, production of "other fisheries" went up by 6.0 percent. At current prices, the value of fisheries production at PhP 70.30 billion indicated a 10.9 percent increase this quarter. *For the period January to September 2021, value of fisheries production at constant 2018 prices decreased by -0.5 percent.* (Tables 2d, 3d, 4d, and 5d)

<sup>1</sup>All value of production growth rates are at constant 2018 prices

## VALUE OF PRODUCTION IN PHILIPPINE AGRICULTURE AND FISHERIES

Table 1a. Value of Production in Agriculture at Constant 2018 Prices  
First Quarter 2019 to Third Quarter 2021  
(in Million PhP)

Subsector	2019				2020				2021			January to September		
	Q1	Q2	Q3	Q4	Q1	Q2	Q3	Q4	Q1	Q2	Q3	2019	2020	2021
Crops	245,801	226,028	210,053	286,230	239,871	237,367	220,011	285,303	247,736	244,674	219,616	681,881	697,249	712,025
Livestock	78,208	83,588	79,228	87,083	78,082	76,486	73,229	75,880	59,786	61,743	62,116	241,024	227,796	183,646
Poultry	60,474	60,403	60,813	63,591	60,574	57,535	58,523	60,078	56,053	58,987	59,259	181,690	176,632	174,299
Fisheries	59,120	70,292	64,739	75,263	57,329	70,982	65,964	71,549	57,463	70,224	65,683	194,151	194,275	193,370
<b>AGRICULTURE</b>	<b>443,602</b>	<b>440,311</b>	<b>414,834</b>	<b>512,168</b>	<b>435,856</b>	<b>442,369</b>	<b>417,727</b>	<b>492,810</b>	<b>421,038</b>	<b>435,628</b>	<b>406,674</b>	<b>1,298,747</b>	<b>1,295,952</b>	<b>1,263,340</b>

Note: Details may not add up to totals due to rounding

Source: Philippine Statistics Authority

Table 1b. Value of Crop Production at Constant 2018 Prices  
First Quarter 2019 to Third Quarter 2021  
(in Million PhP)

Subsector/ Commodity	2019				2020				2021			January to September		
	Q1	Q2	Q3	Q4	Q1	Q2	Q3	Q4	Q1	Q2	Q3	2019	2020	2021
Crops	245,801	226,028	210,053	286,230	239,871	237,367	220,011	285,303	247,736	244,674	219,616	681,881	697,249	712,025
Palay	87,301	77,978	66,879	147,428	84,230	83,497	77,068	145,418	91,453	84,463	82,249	232,158	244,795	258,165
Corn	33,589	16,799	38,821	22,975	31,800	19,384	40,165	22,895	33,866	20,596	32,677	89,208	91,348	87,138
Banana	35,674	38,253	39,901	41,068	34,807	37,740	39,398	41,245	35,162	38,218	39,327	113,828	111,945	112,707
Coconut	24,660	21,992	23,997	21,327	23,609	21,592	23,658	21,247	23,419	21,780	24,116	70,649	68,859	69,314
Mango	5,574	19,014	2,308	969	5,525	19,054	2,356	960	5,749	19,012	2,370	26,896	26,935	27,131
Sugarcane	16,655	4,511	703	11,324	17,318	8,860	870	12,462	16,538	11,944	1,834	21,869	27,048	30,316
Pineapple	6,501	9,551	8,417	6,235	6,555	9,687	7,694	6,241	6,931	10,130	8,702	24,469	23,936	25,763
Cassava	2,558	3,802	5,099	5,923	2,564	3,657	5,090	5,965	2,376	3,504	5,077	11,458	11,311	10,957
Rubber	1,175	3,029	2,588	3,234	1,175	2,825	2,485	3,308	1,220	2,991	2,549	6,791	6,485	6,760
Sweet Potato	1,852	2,466	2,400	2,248	1,922	2,587	2,465	2,348	1,904	2,591	2,430	6,719	6,975	6,925
Onion	6,135	2,135	1	361	6,585	1,990	1	376	5,680	2,427	1	8,272	8,576	8,108
Eggplant	2,562	2,942	1,308	746	2,399	2,889	1,352	702	2,422	2,951	1,284	6,812	6,641	6,657
Coffee	976	361	299	1,620	979	350	297	1,660	1,101	349	284	1,637	1,627	1,734
Tobacco	1,000	2,596	316	129	996	2,682	221	270	934	2,626	228	3,912	3,899	3,788
Abaca	1,064	1,269	1,408	1,287	1,004	1,228	1,410	1,303	857	1,223	1,101	3,741	3,642	3,180
Tomato	1,367	1,376	672	478	1,351	1,421	663	442	1,375	1,463	673	3,416	3,435	3,511
Potato	766	300	465	2,672	747	284	500	2,573	549	354	435	1,530	1,530	1,339
Ampalaya	739	1,020	878	737	736	1,025	870	683	751	1,053	837	2,637	2,632	2,641
Cabbage	585	487	619	1,420	612	484	588	1,452	553	547	482	1,691	1,683	1,581
Calamansi	475	475	1,100	604	423	382	914	584	417	353	991	2,050	1,720	1,760
Mungo	470	1,308	73	173	498	1,321	75	174	529	1,209	69	1,850	1,894	1,807
Cacao	139	158	187	212	162	167	209	227	181	183	201	483	538	566
Other Crops	13,983	14,207	11,615	13,059	13,874	14,260	11,661	12,767	13,768	14,709	11,699	39,805	39,796	40,177

Note: Details may not add up to totals due to rounding

Source: Philippine Statistics Authority

## VALUE OF PRODUCTION IN PHILIPPINE AGRICULTURE AND FISHERIES

Table 1c. Value of Livestock and Poultry Production at Constant 2018 Prices  
First Quarter 2019 to Third Quarter 2021  
(in Million PhP)

Subsector/ Commodity	2019				2020				2021			January to September		
	Q1	Q2	Q3	Q4	Q1	Q2	Q3	Q4	Q1	Q2	Q3	2019	2020	2021
Livestock	78,208	83,588	79,228	87,083	78,082	76,486	73,229	75,880	59,786	61,743	62,116	241,024	227,796	183,646
Hog	66,125	70,408	66,851	71,419	66,271	66,756	61,675	61,563	49,154	49,284	50,667	203,384	194,702	149,105
Cattle	6,502	7,016	6,524	8,312	6,429	4,950	5,874	7,679	5,647	6,563	5,726	20,042	17,253	17,936
Carabao	2,829	3,506	2,898	4,180	2,774	2,575	2,675	3,458	2,541	3,251	2,930	9,233	8,025	8,722
Goat	2,518	2,415	2,713	2,927	2,362	1,950	2,723	2,905	2,192	2,407	2,522	7,645	7,035	7,121
Dairy	234	243	243	245	245	255	282	276	252	238	272	720	782	762
Poultry	60,474	60,403	60,813	63,591	60,574	57,535	58,523	60,078	56,053	58,987	59,259	181,690	176,632	174,299
Chicken	43,606	44,864	44,571	46,170	43,099	41,374	41,372	42,507	38,259	40,726	40,809	133,040	125,845	119,794
Duck	931	548	776	797	874	505	794	826	773	699	777	2,255	2,173	2,248
Chicken Eggs	14,859	13,676	14,411	15,342	15,503	14,353	15,278	15,405	15,909	16,237	16,518	42,946	45,134	48,664
Duck Eggs	1,078	1,315	1,055	1,283	1,098	1,303	1,079	1,339	1,112	1,326	1,155	3,449	3,480	3,593

Note: Details may not add up to totals due to rounding

Source: Philippine Statistics Authority

Table 1d. Value of Fisheries Production at Constant 2018 Prices  
First Quarter 2019 to Third Quarter 2021  
(in Million PhP)

Subsector/ Commodity	2019				2020				2021			January to September		
	Q1	Q2	Q3	Q4	Q1	Q2	Q3	Q4	Q1	Q2	Q3	2019	2020	2021
Fisheries	59,120	70,292	64,739	75,263	57,329	70,982	65,964	71,549	57,463	70,224	65,683	194,151	194,275	193,370
Milkfish (Bangus)	6,508	10,480	12,001	13,812	6,872	10,712	11,272	14,527	6,956	12,056	12,384	28,988	28,856	31,396
Tilapia	6,686	6,211	4,352	7,025	6,657	5,956	4,338	6,022	7,189	6,807	4,583	17,250	16,951	18,579
Tiger Prawn (Sugpo)	4,183	6,161	3,925	8,109	4,111	6,300	3,480	6,780	4,129	6,220	3,536	14,268	13,891	13,884
Skipjack (Gulyasan)	4,801	3,710	4,513	4,827	3,764	4,444	4,529	4,612	4,647	3,913	3,995	13,024	12,737	12,555
Roundscad (Galunggong)	3,468	3,950	3,000	2,294	3,205	4,699	3,385	2,268	2,706	3,843	2,985	10,418	11,289	9,534
Seaweed	2,245	2,062	2,198	4,606	2,231	2,084	2,173	4,355	2,166	2,074	2,093	6,505	6,488	6,333
Yellowfin Tuna (Tambakol/Bariles)	2,557	3,200	2,065	2,790	2,078	3,322	2,400	2,385	1,712	2,161	1,923	7,821	7,800	5,795
Mudcrab (Alimango)	2,928	1,866	2,036	2,679	3,212	1,741	1,839	2,735	3,860	1,976	2,375	6,829	6,792	8,211
Frigate Tuna (Tulingan)	1,940	2,777	2,082	1,903	1,864	2,525	2,366	1,900	1,671	2,098	1,867	6,798	6,754	5,635
Big-eyed Scad (Matangbaka)	1,820	2,339	2,169	2,224	1,894	2,030	2,148	2,145	1,980	2,087	2,356	6,327	6,073	6,423
<i>Bali Sardinella</i> (Tamban)	1,131	2,300	2,027	1,357	1,563	3,355	2,665	1,773	1,733	3,021	2,511	5,458	7,583	7,265
Squid (Pusit)	1,184	1,721	1,280	1,400	1,205	1,461	1,280	1,342	1,165	1,525	1,354	4,184	3,946	4,044
Blue Crab (Alimasag)	832	1,359	1,496	1,181	1,011	1,252	1,880	944	999	1,555	1,465	3,687	4,143	4,019
Bigeye Tuna (Tambakol/ Bariles)	627	747	949	798	647	731	1,311	815	649	744	772	2,323	2,689	2,165
Grouper (Lapu-lapu)	684	780	3,075	770	665	762	3,152	764	578	830	3,263	4,539	4,578	4,671
Indian Mackerel (Alumahan)	1,095	1,433	1,160	1,268	995	1,094	1,119	1,225	978	1,070	1,032	3,688	3,208	3,081
Threadfin Bream (Bisugo)	1,165	1,144	1,348	1,372	1,226	1,078	1,339	1,141	1,001	899	1,083	3,657	3,643	2,984
Slipmouth (Sapsap)	664	695	730	814	517	574	699	684	597	601	612	2,090	1,790	1,810
Cavalla (Talakitok)	767	769	709	747	722	830	842	808	789	852	921	2,244	2,395	2,562
Fimbriated Sardines (Tunsoy)	706	647	657	440	522	350	514	277	322	302	550	2,010	1,386	1,174
Other Fisheries	13,130	15,942	12,969	14,848	12,369	15,683	13,233	14,048	11,635	15,591	14,024	42,041	41,284	41,250

Note: Details may not add up to totals due to rounding

Source: Philippine Statistics Authority



## VALUE OF PRODUCTION IN PHILIPPINE AGRICULTURE AND FISHERIES

Table 2a. Growth Rates of Value of Production in Agriculture at Constant 2018 Prices  
First Quarter 2019 to Third Quarter 2021  
(in percent)

Subsector	2019-2020				2020-2021			January to September	
	Q1	Q2	Q3	Q4	Q1	Q2	Q3	2019-2020	2020-2021
Crops	-2.4	5.0	4.7	-0.3	3.3	3.1	-0.2	2.3	2.1
Livestock	-0.2	-8.5	-7.6	-12.9	-23.4	-19.3	-15.2	-5.5	-19.4
Poultry	0.2	-4.7	-3.8	-5.5	-7.5	2.5	1.3	-2.8	-1.3
Fisheries	-3.0	1.0	1.9	-4.9	0.2	-1.1	-0.4	0.1	-0.5
AGRICULTURE	-1.7	0.5	0.7	-3.8	-3.4	-1.5	-2.6	-0.2	-2.5

Source: Philippine Statistics Authority

Table 2b. Growth Rates of Value of Crop Production at Constant 2018 Prices  
First Quarter 2019 to Third Quarter 2021  
(in percent)

Subsector/ Commodity	2019-2020				2020-2021			January to September	
	Q1	Q2	Q3	Q4	Q1	Q2	Q3	2019-2020	2020-2021
Crops	-2.4	5.0	4.7	-0.3	3.3	3.1	-0.2	2.3	2.1
Palay	-3.5	7.1	15.2	-1.4	8.6	1.2	6.7	5.4	5.5
Corn	-5.3	15.4	3.5	-0.3	6.5	6.3	-18.6	2.4	-4.6
Banana	-2.4	-1.3	-1.3	0.4	1.0	1.3	-0.2	-1.7	0.7
Coconut	-4.3	-1.8	-1.4	-0.4	-0.8	0.9	1.9	-2.5	0.7
Mango	-0.9	0.2	2.1	-0.9	4.1	-0.2	0.6	0.1	0.7
Sugarcane	4.0	96.4	23.8	10.0	-4.5	34.8	110.8	23.7	12.1
Pineapple	0.8	1.4	-8.6	0.1	5.7	4.6	13.1	-2.2	7.6
Cassava	0.2	-3.8	-0.2	0.7	-7.3	-4.2	-0.3	-1.3	-3.1
Rubber	0.04	-6.7	-4.0	2.3	3.8	5.9	2.6	-4.5	4.2
Sweet Potato	3.8	4.9	2.7	4.5	-1.0	0.1	-1.4	3.8	-0.7
Onion	7.3	-6.8	-1.2	4.0	-13.7	22.0	-8.1	3.7	-5.5
Eggplant	-6.4	-1.8	3.4	-5.9	1.0	2.1	-5.0	-2.5	0.2
Coffee	0.3	-3.1	-0.7	2.5	12.4	-0.3	-4.3	-0.6	6.6
Tobacco	-0.5	3.3	-30.0	109.3	-6.2	-2.1	3.2	-0.3	-2.8
Abaca	-5.6	-3.3	0.2	1.2	-14.7	-0.4	-21.9	-2.6	-12.7
Tomato	-1.1	3.2	-1.4	-7.6	1.8	3.0	1.6	0.6	2.2
Potato	-2.5	-5.3	7.5	-3.7	-26.4	24.8	-13.0	0.02	-12.5
Ampalaya	-0.4	0.5	-0.8	-7.3	2.0	2.7	-3.8	-0.2	0.4
Cabbage	4.5	-0.6	-5.0	2.2	-9.6	13.1	-18.1	-0.5	-6.1
Calamansi	-10.9	-19.5	-16.9	-3.2	-1.6	-7.8	8.3	-16.1	2.3
Mongo	6.0	1.0	3.0	0.4	6.2	-8.5	-7.6	2.4	-4.6
Cacao	16.7	5.6	12.0	7.1	11.8	9.9	-3.6	11.3	5.2
Other Crops	-0.8	0.4	0.4	-2.2	-0.8	3.1	0.3	-0.02	1.0

Source: Philippine Statistics Authority

## VALUE OF PRODUCTION IN PHILIPPINE AGRICULTURE AND FISHERIES

Table 2c. Growth Rates of Value of Livestock and Poultry Production at Constant 2018 Prices  
First Quarter 2019 to Third Quarter 2021  
(in percent)

Subsector/ Commodity	2019-2020				2020-2021			January to September	
	Q1	Q2	Q3	Q4	Q1	Q2	Q3	2019-2020	2020-2021
Livestock	-0.2	-8.5	-7.6	-12.9	-23.4	-19.3	-15.2	-5.5	-19.4
Hog	0.2	-5.2	-7.7	-13.8	-25.8	-26.2	-17.8	-4.3	-23.4
Cattle	-1.1	-29.5	-10.0	-7.6	-12.2	32.6	-2.5	-13.9	4.0
Carabao	-2.0	-26.5	-7.7	-17.3	-8.4	26.2	9.5	-13.1	8.7
Goat	-6.2	-19.3	0.4	-0.8	-7.2	23.4	-7.4	-8.0	1.2
Dairy	4.9	5.0	16.0	12.7	2.8	-6.6	-3.6	8.7	-2.6
Poultry	0.2	-4.7	-3.8	-5.5	-7.5	2.5	1.3	-2.8	-1.3
Chicken	-1.2	-7.8	-7.2	-7.9	-11.2	-1.6	-1.4	-5.4	-4.8
Duck	-6.2	-7.8	2.3	3.7	-11.6	38.4	-2.1	-3.6	3.5
Chicken Eggs	4.3	4.9	6.0	0.4	2.6	13.1	8.1	5.1	7.8
Duck Eggs	1.8	-1.0	2.3	4.4	1.3	1.8	7.0	0.9	3.2

Source: Philippine Statistics Authority

Table 2d. Growth Rates of Value of Fisheries Production at Constant 2018 Prices  
First Quarter 2019 to Third Quarter 2021  
(in percent)

Subsector/ Commodity	2019-2020				2020-2021			January to September	
	Q1	Q2	Q3	Q4	Q1	Q2	Q3	2019-2020	2020-2021
Fisheries	-3.0	1.0	1.9	-4.9	0.2	-1.1	-0.4	0.1	-0.5
Milkfish (Bangus)	5.6	2.2	-6.1	5.2	1.2	12.5	9.9	-0.5	8.8
Tilapia	-0.4	-4.1	-0.3	-14.3	8.0	14.3	5.7	-1.7	9.6
Tiger Prawn (Sugpo)	-1.7	2.3	-11.3	-16.4	0.4	-1.3	1.6	-2.6	-0.1
Skipjack (Gulyasan)	-21.6	19.8	0.4	-4.4	23.5	-12.0	-11.8	-2.2	-1.4
Roundscad (Galunggong)	-7.6	18.9	12.8	-1.1	-15.6	-18.2	-11.8	8.4	-15.5
Seaweed	-0.6	1.1	-1.1	-5.5	-2.9	-0.5	-3.7	-0.3	-2.4
Yellowfin Tuna (Tambakol/Bariles)	-18.7	3.8	16.3	-14.5	-17.6	-35.0	-19.9	-0.3	-25.7
Mudcrab (Alimango)	9.7	-6.7	-9.7	2.1	20.2	13.5	29.2	-0.5	20.9
Frigate Tuna (Tulingan)	-3.9	-9.1	13.6	-0.2	-10.3	-16.9	-21.1	-0.6	-16.6
Big-eyed Scad (Matangbaka)	4.1	-13.2	-0.9	-3.5	4.6	2.8	9.7	-4.0	5.8
<i>Bali Sardinella</i> (Tamban)	38.2	45.9	31.4	30.6	10.9	-10.0	-5.8	38.9	-4.2
Squid (Pusit)	1.8	-15.1	0.05	-4.16	-3.4	4.4	5.7	-5.7	2.5
Blue Crab (Alimasag)	21.5	-7.9	25.6	-20.1	-1.2	24.2	-22.1	12.4	-3.0
Bigeye Tuna (Tambakol/ Bariles)	3.2	-2.1	38.1	2.1	0.3	1.9	-41.1	15.7	-19.5
Grouper (Lapu-lapu)	-2.8	-2.4	2.5	-0.8	-12.9	9.0	3.5	0.9	2.0
Indian Mackerel (Alumahan)	-9.2	-23.6	-3.5	-3.4	-1.6	-2.2	-7.8	-13.0	-4.0
Threadfin Bream (Bisugo)	5.2	-5.8	-0.7	-16.8	-18.3	-16.6	-19.1	-0.4	-18.1
Slipmouth (Sapsap)	-22.2	-17.4	-4.3	-16.0	15.5	4.7	-12.4	-14.4	1.1
Cavalla (Talakitok)	-5.8	8.0	18.8	8.1	9.2	2.6	9.4	6.7	7.0
Fimbriated Sardines (Tunsoy)	-26.0	-45.9	-21.7	-37.0	-38.3	-13.7	7.0	-31.1	-15.3
Other Fisheries	-5.8	-1.6	2.0	-5.4	-5.9	-0.6	6.0	-1.8	-0.1

Source: Philippine Statistics Authority

## VALUE OF PRODUCTION IN PHILIPPINE AGRICULTURE AND FISHERIES

Table 3a. Percent Distribution of Value of Production in Agriculture at Constant 2018 Prices  
First Quarter 2019 to Third Quarter 2021  
(in percent)

Subsector	2019				2020				2021			January to September		
	Q1	Q2	Q3	Q4	Q1	Q2	Q3	Q4	Q1	Q2	Q3	2019	2020	2021
Crops	55.4	51.3	50.6	55.9	55.0	53.7	52.7	57.9	58.8	56.2	54.0	52.5	53.8	56.4
Livestock	17.6	19.0	19.1	17.0	17.9	17.3	17.5	15.4	14.2	14.2	15.3	18.6	17.6	14.5
Poultry	13.6	13.7	14.7	12.4	13.9	13.0	14.0	12.2	13.3	13.5	14.6	14.0	13.6	13.8
Fisheries	13.3	16.0	15.6	14.7	13.2	16.0	15.8	14.5	13.6	16.1	16.2	14.9	15.0	15.3
AGRICULTURE	100.0	100.0	100.0	100.0	100.0	100.0	100.0	100.0	100.0	100.0	100.0	100.0	100.0	100.0

Note: Details may not add up to totals due to rounding

Source: Philippine Statistics Authority

Table 3b. Percent Distribution of Value of Crop Production at Constant 2018 Prices  
First Quarter 2019 to Third Quarter 2021  
(in percent)

Subsector/ Commodity	2019				2020				2021			January to September		
	Q1	Q2	Q3	Q4	Q1	Q2	Q3	Q4	Q1	Q2	Q3	2019	2020	2021
Crops	55.4	51.3	50.6	55.9	55.0	53.7	52.7	57.9	58.8	56.2	54.0	52.5	53.8	56.4
Palay	19.7	17.7	16.1	28.8	19.3	18.9	18.4	29.5	21.7	19.4	20.2	17.9	18.9	20.4
Corn	7.6	3.8	9.4	4.5	7.3	4.4	9.6	4.6	8.0	4.7	8.0	6.9	7.0	6.9
Banana	8.0	8.7	9.6	8.0	8.0	8.5	9.4	8.4	8.4	8.8	9.7	8.8	8.6	8.9
Coconut	5.6	5.0	5.8	4.2	5.4	4.9	5.7	4.3	5.6	5.0	5.9	5.4	5.3	5.5
Mango	1.3	4.3	0.6	0.2	1.3	4.3	0.6	0.2	1.4	4.4	0.6	2.1	2.1	2.1
Sugarcane	3.8	1.0	0.2	2.2	4.0	2.0	0.2	2.5	3.9	2.7	0.5	1.7	2.1	2.4
Pineapple	1.5	2.2	2.0	1.2	1.5	2.2	1.8	1.3	1.6	2.3	2.1	1.9	1.8	2.0
Cassava	0.6	0.9	1.2	1.2	0.6	0.8	1.2	1.2	0.6	0.8	1.2	0.9	0.9	0.9
Rubber	0.3	0.7	0.6	0.6	0.3	0.6	0.6	0.7	0.3	0.7	0.6	0.5	0.5	0.5
Sweet Potato	0.4	0.6	0.6	0.4	0.4	0.6	0.6	0.5	0.5	0.6	0.6	0.5	0.5	0.5
Onion	1.4	0.5	0.0003	0.1	1.5	0.4	0.0003	0.1	1.3	0.6	0.0003	0.6	0.7	0.6
Eggplant	0.6	0.7	0.3	0.1	0.6	0.7	0.3	0.1	0.6	0.7	0.3	0.5	0.5	0.5
Coffee	0.2	0.1	0.1	0.3	0.2	0.1	0.1	0.3	0.3	0.1	0.1	0.1	0.1	0.1
Tobacco	0.2	0.6	0.1	0.03	0.2	0.6	0.1	0.1	0.2	0.6	0.1	0.3	0.3	0.3
Abaca	0.2	0.3	0.3	0.3	0.2	0.3	0.3	0.3	0.2	0.3	0.3	0.3	0.3	0.3
Tomato	0.3	0.3	0.2	0.1	0.3	0.3	0.2	0.1	0.3	0.3	0.2	0.3	0.3	0.3
Potato	0.2	0.1	0.1	0.5	0.2	0.1	0.1	0.5	0.1	0.1	0.1	0.1	0.1	0.1
Ampalaya	0.2	0.2	0.2	0.1	0.2	0.2	0.2	0.1	0.2	0.2	0.2	0.2	0.2	0.2
Cabbage	0.1	0.1	0.1	0.3	0.1	0.1	0.1	0.3	0.1	0.1	0.1	0.1	0.1	0.1
Calamansi	0.1	0.1	0.3	0.1	0.1	0.1	0.2	0.1	0.1	0.1	0.2	0.2	0.1	0.1
Mongo	0.1	0.3	0.02	0.03	0.1	0.3	0.02	0.04	0.1	0.3	0.02	0.1	0.1	0.1
Cacao	0.03	0.04	0.04	0.04	0.04	0.04	0.1	0.05	0.04	0.04	0.05	0.04	0.04	0.04
Other Crops	3.2	3.2	2.8	2.5	3.2	3.2	2.8	2.6	3.3	3.4	2.9	3.1	3.1	3.2

Note: Details may not add up to totals due to rounding

Source: Philippine Statistics Authority

## VALUE OF PRODUCTION IN PHILIPPINE AGRICULTURE AND FISHERIES

Table 3c. Percent Distribution of Value of Livestock and Poultry Production at Constant 2018 Prices  
First Quarter 2019 to Third Quarter 2021  
(in percent)

Subsector/ Commodity	2019				2020				2021			January to September		
	Q1	Q2	Q3	Q4	Q1	Q2	Q3	Q4	Q1	Q2	Q3	2019	2020	2021
Livestock	17.6	19.0	19.1	17.0	17.9	17.3	17.5	15.4	14.2	14.2	15.3	18.6	17.6	14.5
Hog	14.9	16.0	16.1	13.9	15.2	15.1	14.8	12.5	11.7	11.3	12.5	15.7	15.0	11.8
Cattle	1.5	1.6	1.6	1.6	1.5	1.1	1.4	1.6	1.3	1.5	1.4	1.5	1.3	1.4
Carabao	0.6	0.8	0.7	0.8	0.6	0.6	0.6	0.7	0.6	0.7	0.7	0.7	0.6	0.7
Goat	0.6	0.5	0.7	0.6	0.5	0.4	0.7	0.6	0.5	0.6	0.6	0.6	0.5	0.6
Dairy	0.1	0.1	0.1	0.05	0.1	0.1	0.1	0.1	0.1	0.1	0.1	0.1	0.1	0.1
Poultry	13.6	13.7	14.7	12.4	13.9	13.0	14.0	12.2	13.3	13.5	14.6	14.0	13.6	13.8
Chicken	9.8	10.2	10.7	9.0	9.9	9.4	9.9	8.6	9.1	9.3	10.0	10.2	9.7	9.5
Duck	0.2	0.1	0.2	0.2	0.2	0.1	0.2	0.2	0.2	0.2	0.2	0.2	0.2	0.2
Chicken Eggs	3.3	3.1	3.5	3.0	3.6	3.2	3.7	3.1	3.8	3.7	4.1	3.3	3.5	3.9
Duck Eggs	0.2	0.3	0.3	0.3	0.3	0.3	0.3	0.3	0.3	0.3	0.3	0.3	0.3	0.3

Note: Details may not add up to totals due to rounding

Source: Philippine Statistics Authority

Table 3d. Percent Distribution of Value of Fisheries Production at Constant 2018 Prices  
First Quarter 2019 to Third Quarter 2021  
(in percent)

Subsector/ Commodity	2019				2020				2021			January to September		
	Q1	Q2	Q3	Q4	Q1	Q2	Q3	Q4	Q1	Q2	Q3	2019	2020	2021
Fisheries	13.3	16.0	15.6	14.7	13.2	16.0	15.8	14.5	13.6	16.1	16.2	14.9	15.0	15.3
Milkfish (Bangus)	1.5	2.4	2.9	2.7	1.6	2.4	2.7	2.9	1.7	2.8	3.0	2.2	2.2	2.5
Tilapia	1.5	1.4	1.0	1.4	1.5	1.3	1.0	1.2	1.7	1.6	1.1	1.3	1.3	1.5
Tiger Prawn (Sugpo)	0.9	1.4	0.9	1.6	0.9	1.4	0.8	1.4	1.0	1.4	0.9	1.1	1.1	1.1
Skipjack (Gulyasan)	1.1	0.8	1.1	0.9	0.9	1.0	1.1	0.9	1.1	0.9	1.0	1.0	1.0	1.0
Roundscad (Galunggong)	0.8	0.9	0.7	0.4	0.7	1.1	0.8	0.5	0.6	0.9	0.7	0.8	0.9	0.8
Seaweed	0.5	0.5	0.5	0.9	0.5	0.5	0.5	0.9	0.5	0.5	0.5	0.5	0.5	0.5
Yellowfin Tuna (Tambakol/Bariles)	0.6	0.7	0.5	0.5	0.5	0.8	0.6	0.5	0.4	0.5	0.5	0.6	0.6	0.5
Mudcrab (Alimango)	0.7	0.4	0.5	0.5	0.7	0.4	0.4	0.6	0.9	0.5	0.6	0.5	0.5	0.6
Frigate Tuna (Tulangan)	0.4	0.6	0.5	0.4	0.4	0.6	0.6	0.4	0.4	0.5	0.5	0.5	0.5	0.4
Big-eyed Scad (Matangbaka)	0.4	0.5	0.5	0.4	0.4	0.5	0.5	0.4	0.5	0.5	0.6	0.5	0.5	0.5
<i>Bali Sardinella</i> (Tamban)	0.3	0.5	0.5	0.3	0.4	0.8	0.6	0.4	0.4	0.7	0.6	0.4	0.6	0.6
Squid (Pusit)	0.3	0.4	0.3	0.3	0.3	0.3	0.3	0.3	0.3	0.4	0.3	0.3	0.3	0.3
Blue Crab (Alimasag)	0.2	0.3	0.4	0.2	0.2	0.3	0.5	0.2	0.2	0.4	0.4	0.3	0.3	0.3
Bigeye Tuna (Tambakol/ Bariles)	0.1	0.2	0.2	0.2	0.1	0.2	0.3	0.2	0.2	0.2	0.2	0.2	0.2	0.2
Grouper (Lapu-lapu)	0.2	0.2	0.7	0.2	0.2	0.2	0.8	0.2	0.1	0.2	0.8	0.3	0.4	0.4
Indian Mackerel (Alumahan)	0.2	0.3	0.3	0.2	0.2	0.2	0.3	0.2	0.2	0.2	0.3	0.3	0.2	0.2
Threadfin Bream (Bisugo)	0.3	0.3	0.3	0.3	0.3	0.2	0.3	0.2	0.2	0.2	0.3	0.3	0.3	0.2
Slipmouth (Sapsap)	0.1	0.2	0.2	0.2	0.1	0.1	0.2	0.1	0.1	0.1	0.2	0.2	0.1	0.1
Cavalla (Talakitok)	0.2	0.2	0.2	0.1	0.2	0.2	0.2	0.2	0.2	0.2	0.2	0.2	0.2	0.2
Fimbriated Sardines (Tunsoy)	0.2	0.1	0.2	0.1	0.1	0.1	0.1	0.1	0.1	0.1	0.1	0.2	0.1	0.1
Other Fisheries	3.0	3.6	3.1	2.9	2.8	3.5	3.2	2.9	2.8	3.6	3.4	3.2	3.2	3.3

Note: Details may not add up to totals due to rounding

Source: Philippine Statistics Authority

## VALUE OF PRODUCTION IN PHILIPPINE AGRICULTURE AND FISHERIES

Table 4a. Value of Production in Agriculture at Current Prices  
First Quarter 2019 to Third Quarter 2021  
(in Million PhP)

Subsector	2019				2020				2021			January to September		
	Q1	Q2	Q3	Q4	Q1	Q2	Q3	Q4	Q1	Q2	Q3	2019	2020	2021
Crops	258,396	236,979	213,428	274,954	248,973	262,213	227,223	324,505	270,451	266,181	231,325	708,803	738,409	767,957
Livestock	77,450	79,650	72,531	74,068	74,084	72,355	70,324	83,101	81,918	85,278	79,713	229,630	216,763	246,908
Poultry	54,042	55,821	60,477	72,317	62,418	61,569	63,566	74,862	69,054	70,113	65,125	170,340	187,553	204,292
Fisheries	63,239	75,010	63,953	79,450	62,607	73,208	63,369	74,305	66,882	80,205	70,296	202,201	199,183	217,383
<b>AGRICULTURE</b>	<b>453,126</b>	<b>447,460</b>	<b>410,388</b>	<b>500,790</b>	<b>448,082</b>	<b>469,345</b>	<b>424,481</b>	<b>556,772</b>	<b>488,304</b>	<b>501,777</b>	<b>446,459</b>	<b>1,310,974</b>	<b>1,341,908</b>	<b>1,436,540</b>

Note: Details may not add up to totals due to rounding

Source: Philippine Statistics Authority

Table 4b. Value of Crop Production at Current Prices  
First Quarter 2019 to Third Quarter 2021  
(in Million PhP)

Subsector/ Commodity	2019				2020				2021			January to September		
	Q1	Q2	Q3	Q4	Q1	Q2	Q3	Q4	Q1	Q2	Q3	2019	2020	2021
Crops	258,396	236,979	213,428	274,954	248,973	262,213	227,223	324,505	270,451	266,181	231,325	708,803	738,409	767,957
Palay	83,243	69,050	49,393	112,759	69,106	76,551	59,930	113,169	77,578	71,232	63,496	201,686	205,587	212,306
Corn	33,691	16,456	36,855	19,351	28,607	17,100	35,402	19,514	31,159	19,392	34,968	87,002	81,110	85,519
Banana	47,090	51,221	54,925	54,159	49,187	59,069	62,656	64,101	53,943	55,470	54,783	153,235	170,911	164,195
Coconut	23,443	23,842	28,087	28,068	23,033	24,086	28,696	34,017	27,034	27,897	33,067	75,372	75,815	87,998
Mango	4,035	17,836	3,126	1,580	4,330	20,722	2,673	1,519	5,344	22,818	2,536	24,997	27,725	30,698
Sugarcane	22,369	5,210	411	10,868	21,555	9,299	637	11,394	19,280	12,030	1,693	27,990	31,492	33,002
Pineapple	8,324	10,149	9,217	10,989	9,436	9,465	8,184	31,409	10,164	10,573	9,617	27,690	27,085	30,354
Cassava	3,259	4,752	6,945	6,529	4,087	6,108	5,260	9,251	3,949	5,446	5,011	14,956	15,455	14,407
Rubber	1,058	3,218	2,729	3,614	1,046	2,155	2,196	4,020	1,218	3,362	2,865	7,005	5,396	7,445
Sweet Potato	1,881	2,891	2,684	2,349	2,337	3,511	3,093	2,904	2,385	3,001	2,954	7,455	8,941	8,340
Onion	5,610	1,372	1	528	10,154	2,749	1	708	7,632	3,401	1	6,982	12,904	11,034
Eggplant	2,450	2,639	1,092	909	2,543	2,748	875	967	3,277	3,019	1,162	6,180	6,167	7,458
Coffee	903	342	290	1,500	898	298	267	1,459	927	296	279	1,534	1,463	1,502
Tobacco	984	3,971	437	247	1,062	3,992	385	753	993	3,889	366	5,392	5,438	5,248
Abaca	991	1,185	1,270	1,086	940	1,151	1,269	1,112	815	1,133	1,004	3,447	3,360	2,952
Tomato	2,021	1,931	807	716	2,126	1,651	727	1,211	2,944	1,568	937	4,759	4,504	5,449
Potato	626	365	553	2,418	963	556	584	2,473	774	421	447	1,544	2,103	1,642
Ampalaya	772	1,252	815	852	775	1,243	701	939	914	1,215	853	2,839	2,719	2,982
Cabbage	469	501	242	1,070	628	669	264	2,080	1,023	458	468	1,212	1,561	1,948
Calamansi	390	639	1,632	704	372	438	1,301	642	453	454	1,739	2,661	2,111	2,646
Mongo	490	1,375	93	207	528	1,431	92	197	601	1,364	91	1,958	2,051	2,056
Cacao	165	179	202	258	200	202	239	272	211	204	228	546	641	644
Other Crops	14,134	16,605	11,623	14,191	15,060	17,021	11,792	20,396	17,833	17,537	12,760	42,361	43,872	48,130

Note: Details may not add up to totals due to rounding

Source: Philippine Statistics Authority

## VALUE OF PRODUCTION IN PHILIPPINE AGRICULTURE AND FISHERIES

Table 4c. Value of Livestock and Poultry Production at Current Prices  
First Quarter 2019 to Third Quarter 2021  
(in Million PhP)

Subsector/ Commodity	2019				2020				2021			January to September		
	Q1	Q2	Q3	Q4	Q1	Q2	Q3	Q4	Q1	Q2	Q3	2019	2020	2021
Livestock	77,450	79,650	72,531	74,068	74,084	72,355	70,324	83,101	81,918	85,278	79,713	229,630	216,763	246,908
Hog	64,666	65,756	59,625	57,437	60,250	61,077	57,266	66,480	67,942	68,541	64,624	190,047	178,592	201,107
Cattle	6,796	7,280	6,747	8,854	7,676	5,868	6,830	9,162	7,651	9,046	7,898	20,822	20,373	24,595
Carabao	2,963	3,693	3,003	4,334	3,245	2,994	3,029	3,963	3,278	4,386	3,814	9,658	9,268	11,478
Goat	2,769	2,655	2,901	3,195	2,629	2,125	2,882	3,182	2,692	2,980	3,020	8,325	7,636	8,692
Dairy	256	266	255	248	285	291	317	314	353	324	357	778	893	1,035
Poultry	54,042	55,821	60,477	72,317	62,418	61,569	63,566	74,862	69,054	70,113	65,125	170,340	187,553	204,292
Chicken	37,612	39,593	42,560	51,538	42,611	41,523	42,291	53,199	47,837	47,724	43,826	119,765	126,425	139,388
Duck	1,061	611	887	990	1,061	639	1,042	1,197	1,254	1,140	1,149	2,558	2,742	3,543
Chicken Eggs	14,275	14,259	15,889	18,369	17,540	17,974	19,029	18,978	18,696	19,774	18,859	44,423	54,543	57,329
Duck Eggs	1,094	1,359	1,141	1,420	1,205	1,433	1,204	1,488	1,266	1,475	1,291	3,594	3,842	4,032

Note: Details may not add up to totals due to rounding

Source: Philippine Statistics Authority

Table 4d. Value of Fisheries Production at Current Prices  
First Quarter 2019 to Third Quarter 2021  
(in Million PhP)

Subsector/ Commodity	2019				2020				2021			January to September		
	Q1	Q2	Q3	Q4	Q1	Q2	Q3	Q4	Q1	Q2	Q3	2019	2020	2021
Fisheries	63,239	75,010	63,953	79,450	62,607	73,208	63,369	74,305	66,882	80,205	70,296	202,201	199,183	217,383
Milkfish (Bangus)	6,886	10,267	11,616	14,584	7,334	11,585	9,926	15,160	7,680	13,387	12,839	28,768	28,844	33,905
Tilapia	6,797	6,358	4,599	7,425	7,403	6,565	4,857	6,680	8,041	7,563	5,051	17,755	18,825	20,654
Tiger Prawn (Sugpo)	4,453	6,449	4,059	8,158	4,093	6,747	2,947	6,810	4,348	6,779	3,335	14,961	13,788	14,462
Skipjack (Gulyasan)	5,471	4,580	4,826	5,577	4,229	4,723	4,433	4,631	5,546	5,176	4,422	14,877	13,384	15,145
Roundscad (Galunggong)	3,269	3,734	2,926	2,251	3,290	4,703	3,423	2,416	3,352	4,520	3,641	9,929	11,417	11,514
Seaweed	2,464	2,479	2,236	4,666	2,459	2,464	2,279	3,412	2,544	2,324	2,368	7,179	7,202	7,235
Yellowfin Tuna (Tambakol/Bariles)	3,316	3,779	2,415	3,168	2,670	3,085	2,413	2,703	2,283	2,677	2,441	9,511	8,168	7,402
Mudcrab (Alimango)	2,964	1,890	1,939	2,824	3,241	1,908	1,657	2,574	4,952	2,111	2,471	6,793	6,806	9,534
Frigate Tuna (Tulingan)	2,028	2,835	2,066	2,044	2,127	2,501	2,226	2,080	1,984	2,415	1,946	6,928	6,854	6,345
Big-eyed Scad (Matangbaka)	1,959	2,383	2,128	2,397	2,125	2,068	2,112	2,501	2,344	2,416	2,668	6,470	6,305	7,428
Bali Sardinella (Tamban)	1,136	2,337	2,127	1,402	1,375	2,763	2,721	1,671	1,558	3,244	2,736	5,600	6,859	7,538
Squid (Pusit)	1,260	1,800	1,267	1,451	1,400	1,534	1,273	1,400	1,366	1,697	1,472	4,327	4,207	4,534
Blue Crab (Alimasag)	902	1,356	1,277	1,020	1,044	1,060	1,588	756	1,021	1,679	1,459	3,535	3,692	4,159
Bigeye Tuna (Tambakol/ Bariles)	495	629	749	658	505	571	878	587	543	663	617	1,873	1,954	1,823
Grouper (Lapu-lapu)	728	910	997	831	786	853	2,024	762	704	1,043	1,108	2,635	3,663	2,854
Indian Mackerel (Alumahan)	1,198	1,573	1,197	1,320	1,152	1,189	1,230	1,400	1,247	1,292	1,143	3,968	3,572	3,683
Threadfin Bream (Bisugo)	1,283	1,371	1,339	1,485	1,403	1,234	1,418	1,238	1,098	1,083	1,272	3,993	4,055	3,452
Slipmouth (Sapsap)	632	769	782	829	542	641	725	721	682	715	597	2,183	1,908	1,994
Cavalla (Talakitok)	813	826	725	797	821	908	874	853	939	1,057	1,137	2,364	2,603	3,133
Fimbriated Sardines (Tunsoy)	636	720	598	484	523	470	483	378	398	481	524	1,955	1,475	1,403
Other Fisheries	14,550	17,965	14,082	16,082	14,083	15,639	13,882	15,571	14,251	17,883	17,049	46,597	43,603	49,184

Note: Details may not add up to totals due to rounding

Source: Philippine Statistics Authority

## VALUE OF PRODUCTION IN PHILIPPINE AGRICULTURE AND FISHERIES

Table 5a. Growth Rates of Value of Production in Agriculture at Current Prices  
First Quarter 2019 to Third Quarter 2021  
(in percent)

Subsector	2019-2020				2020-2021			January to September	
	Q1	Q2	Q3	Q4	Q1	Q2	Q3	2019-2020	2020-2021
Crops	-3.6	10.6	6.5	18.0	8.6	1.5	1.8	4.2	4.0
Livestock	-4.3	-9.2	-3.0	12.2	10.6	17.9	13.4	-5.6	13.9
Poultry	15.5	10.3	5.1	3.5	10.6	13.9	2.5	10.1	8.9
Fisheries	-1.0	-2.4	-0.9	-6.5	6.8	9.6	10.9	-1.5	9.1
AGRICULTURE	-1.1	4.9	3.4	11.2	9.0	6.9	5.2	2.4	7.1

Source: Philippine Statistics Authority

Table 5b. Growth Rates of Value of Crop Production at Current Prices  
First Quarter 2019 to Third Quarter 2021  
(in percent)

Subsector/ Commodity	2019-2020				2020-2021			January to September	
	Q1	Q2	Q3	Q4	Q1	Q2	Q3	2019-2020	2020-2021
Crops	-3.6	10.6	6.5	18.0	8.6	1.5	1.8	4.2	4.0
Palay	-17.0	10.9	21.3	0.4	12.3	-6.9	6.0	1.9	3.3
Corn	-15.1	3.9	-3.9	0.8	8.9	13.4	-1.2	-6.8	5.4
Banana	4.5	15.3	14.1	18.4	9.7	-6.1	-12.6	11.5	-3.9
Coconut	-1.7	1.0	2.2	21.2	17.4	15.8	15.2	0.6	16.1
Mango	7.3	16.2	-14.5	-3.9	23.4	10.1	-5.1	10.9	10.7
Sugarcane	-3.6	78.5	55.2	4.8	-10.6	29.4	165.7	12.5	4.8
Pineapple	13.4	-6.7	-11.2	185.8	7.7	11.7	17.5	-2.2	12.1
Cassava	25.4	28.5	-24.3	41.7	-3.4	-10.8	-4.7	3.3	-6.8
Rubber	-1.2	-33.0	-19.5	11.2	16.5	56.0	30.5	-23.0	38.0
Sweet Potato	24.3	21.5	15.2	23.6	2.1	-14.5	-4.5	19.9	-6.7
Onion	81.0	100.4	36.7	33.9	-24.8	23.7	-12.8	84.8	-14.5
Eggplant	3.8	4.2	-19.8	6.3	28.8	9.8	32.8	-0.2	20.9
Coffee	-0.5	-12.8	-7.9	-2.8	3.2	-0.5	4.5	-4.6	2.7
Tobacco	7.9	0.5	-12.0	204.5	-6.5	-2.6	-4.7	0.9	-3.5
Abaca	-5.1	-2.9	-0.1	2.4	-13.3	-1.5	-20.9	-2.5	-12.1
Tomato	5.2	-14.5	-10.0	69.1	38.4	-5.0	29.0	-5.4	21.0
Potato	53.9	52.2	5.6	2.2	-19.6	-24.3	-23.5	36.2	-21.9
Ampalaya	0.4	-0.7	-14.0	10.2	18.0	-2.3	21.7	-4.2	9.7
Cabbage	33.8	33.4	9.4	94.3	63.0	-31.5	76.8	28.8	24.8
Calamansi	-4.7	-31.5	-20.3	-8.8	21.8	3.6	33.7	-20.7	25.4
Mongo	7.9	4.1	-1.7	-4.7	13.9	-4.7	-1.1	4.8	0.2
Cacao	21.3	13.2	18.3	5.6	5.5	1.0	-4.4	17.5	0.4
Other Crops	6.6	2.5	1.5	43.7	18.4	3.0	8.2	3.6	9.7

Source: Philippine Statistics Authority

## VALUE OF PRODUCTION IN PHILIPPINE AGRICULTURE AND FISHERIES

Table 5c. Growth Rates of Value of Livestock and Poultry Production at Current Prices  
First Quarter 2019 to Third Quarter 2021  
(in percent)

Subsector/ Commodity	2019-2020				2020-2021			January to September	
	Q1	Q2	Q3	Q4	Q1	Q2	Q3	2019-2020	2020-2021
Livestock	-4.3	-9.2	-3.0	12.2	10.6	17.9	13.4	-5.6	13.9
Hog	-6.8	-7.1	-4.0	15.7	12.8	12.2	12.8	-6.0	12.6
Cattle	12.9	-19.4	1.2	3.5	-0.3	54.2	15.6	-2.2	20.7
Carabao	9.5	-18.9	0.9	-8.6	1.0	46.5	25.9	-4.0	23.8
Goat	-5.1	-19.9	-0.6	-0.4	2.4	40.2	4.8	-8.3	13.8
Dairy	11.1	9.3	24.0	26.6	23.9	11.4	12.8	14.7	15.9
Poultry	15.5	10.3	5.1	3.5	10.6	13.9	2.5	10.1	8.9
Chicken	13.3	4.9	-0.6	3.2	12.3	14.9	3.6	5.6	10.3
Duck	0.002	4.7	17.6	20.8	18.2	78.3	10.2	7.2	29.2
Chicken Eggs	22.9	26.1	19.8	3.3	6.6	10.0	-0.9	22.8	5.1
Duck Eggs	10.2	5.4	5.5	4.8	5.0	2.9	7.3	6.9	4.9

Source: Philippine Statistics Authority

Table 5d. Growth Rates of Value of Fisheries Production at Current Prices  
First Quarter 2019 to Third Quarter 2021  
(in percent)

Subsector/ Commodity	2019-2020				2020-2021			January to September	
	Q1	Q2	Q3	Q4	Q1	Q2	Q3	2019-2020	2020-2021
Fisheries	-1.0	-2.4	-0.9	-6.5	6.8	9.6	10.9	-1.5	9.1
Milkfish (Bangus)	6.5	12.8	-14.5	3.9	4.7	15.6	29.3	0.3	17.5
Tilapia	8.9	3.2	5.6	-10.0	8.6	15.2	4.0	6.0	9.7
Tiger Prawn (Sugpo)	-8.1	4.6	-27.4	-16.5	6.2	0.5	13.2	-7.8	4.9
Skipjack (Gulyasan)	-22.7	3.1	-8.2	-17.0	31.2	9.6	-0.2	-10.0	13.2
Roundscad (Galunggong)	0.7	26.0	17.0	7.3	1.9	-3.9	6.4	15.0	0.9
Seaweed	-0.2	-0.6	1.9	-26.9	3.5	-5.7	3.9	0.3	0.5
Yellowfin Tuna (Tambakol/Bariles)	-19.5	-18.4	-0.1	-14.7	-14.5	-13.2	1.2	-14.1	-9.4
Mudcrab (Alimango)	9.3	0.9	-14.6	-8.9	52.8	10.7	49.1	0.2	40.1
Frigate Tuna (Tulingan)	4.9	-11.8	7.7	1.8	-6.7	-3.4	-12.6	-1.1	-7.4
Big-eyed Scad (Matangbaka)	8.5	-13.2	-0.8	4.4	10.3	16.8	26.3	-2.5	17.8
<i>Bali Sardinella</i> (Tamban)	21.0	18.2	28.0	19.2	13.4	17.4	0.5	22.5	9.9
Squid (Pusit)	11.1	-14.8	0.5	-3.5	-2.4	10.6	15.6	-2.8	7.8
Blue Crab (Alimasag)	15.7	-21.9	24.4	-25.9	-2.2	58.4	-8.2	4.4	12.7
Bigeye Tuna (Tambakol/ Bariles)	2.1	-9.3	17.2	-10.8	7.5	16.1	-29.7	4.3	-6.7
Grouper (Lapu-lapu)	8.0	-6.2	102.9	-8.3	-10.5	22.2	-45.2	39.0	-22.1
Indian Mackerel (Alumahan)	-3.8	-24.4	2.8	6.1	8.3	8.7	-7.1	-10.0	3.1
Threadfin Bream (Bisugo)	9.3	-10.0	5.9	-16.7	-21.7	-12.3	-10.3	1.5	-14.9
Slipmouth (Sapsap)	-14.2	-16.7	-7.3	-13.0	25.7	11.6	-17.6	-12.6	4.5
Cavalla (Talakitok)	1.1	9.9	20.4	7.0	14.3	16.5	30.1	10.1	20.4
Fimbriated Sardines (Tunsoy)	-17.8	-34.8	-19.3	-21.9	-24.0	2.5	8.5	-24.5	-4.9
Other Fisheries	-3.2	-12.9	-1.4	-3.2	1.2	14.4	22.8	-6.4	12.8

Source: Philippine Statistics Authority



## VALUE OF PRODUCTION IN PHILIPPINE AGRICULTURE AND FISHERIES

Table 6a. Percent Distribution of Value of Production in Agriculture at Current Prices  
First Quarter 2019 to Third Quarter 2021  
(in percent)

Subsector	2019				2020				2021			January to September		
	Q1	Q2	Q3	Q4	Q1	Q2	Q3	Q4	Q1	Q2	Q3	2019	2020	2021
Crops	57.0	53.0	52.0	54.9	55.6	55.9	53.5	58.3	55.4	53.0	51.8	54.1	55.0	53.5
Livestock	17.1	17.8	17.7	14.8	16.5	15.4	16.6	14.9	16.8	17.0	17.9	17.5	16.2	17.2
Poultry	11.9	12.5	14.7	14.4	13.9	13.1	15.0	13.4	14.1	14.0	14.6	13.0	14.0	14.2
Fisheries	14.0	16.8	15.6	15.9	14.0	15.6	14.9	13.3	13.7	16.0	15.7	15.4	14.8	15.1
AGRICULTURE	100.0	100.0	100.0	100.0	100.0	100.0	100.0	100.0	100.0	100.0	100.0	100.0	100.0	100.0

Note: Details may not add up to totals due to rounding

Source: Philippine Statistics Authority

Table 6b. Percent Distribution of Value of Crop Production at Current Prices  
First Quarter 2019 to Third Quarter 2021  
(in percent)

Subsector/ Commodity	2019				2020				2021			January to September		
	Q1	Q2	Q3	Q4	Q1	Q2	Q3	Q4	Q1	Q2	Q3	2019	2020	2021
Crops	57.0	53.0	52.0	54.9	55.6	55.9	53.5	58.3	55.4	53.0	51.8	54.1	55.0	53.5
Palay	18.4	15.4	12.0	22.5	15.4	16.3	14.1	20.3	15.9	14.2	14.2	15.4	15.3	14.8
Corn	7.4	3.7	9.0	3.9	6.4	3.6	8.3	3.5	6.4	3.9	7.8	6.6	6.0	6.0
Banana	10.4	11.4	13.4	10.8	11.0	12.6	14.8	11.5	11.0	11.1	12.3	11.7	12.7	11.4
Coconut	5.2	5.3	6.8	5.6	5.1	5.1	6.8	6.1	5.5	5.6	7.4	5.7	5.6	6.1
Mango	0.9	4.0	0.8	0.3	1.0	4.4	0.6	0.3	1.1	4.5	0.6	1.9	2.1	2.1
Sugarcane	4.9	1.2	0.1	2.2	4.8	2.0	0.2	2.0	3.9	2.4	0.4	2.1	2.3	2.3
Pineapple	1.8	2.3	2.2	2.2	2.1	2.0	1.9	5.6	2.1	2.1	2.2	2.1	2.0	2.1
Cassava	0.7	1.1	1.7	1.3	0.9	1.3	1.2	1.7	0.8	1.1	1.1	1.1	1.2	1.0
Rubber	0.2	0.7	0.7	0.7	0.2	0.5	0.5	0.7	0.2	0.7	0.6	0.5	0.4	0.5
Sweet Potato	0.4	0.6	0.7	0.5	0.5	0.7	0.7	0.5	0.5	0.6	0.7	0.6	0.7	0.6
Onion	1.2	0.3	0.0002	0.1	2.3	0.6	0.0003	0.1	1.6	0.7	0.0003	0.5	1.0	0.8
Eggplant	0.5	0.6	0.3	0.2	0.6	0.6	0.2	0.2	0.7	0.6	0.3	0.5	0.5	0.5
Coffee	0.2	0.1	0.1	0.3	0.2	0.1	0.1	0.3	0.2	0.1	0.1	0.1	0.1	0.1
Tobacco	0.2	0.9	0.1	0.05	0.2	0.9	0.1	0.1	0.2	0.8	0.1	0.4	0.4	0.4
Abaca	0.2	0.3	0.3	0.2	0.2	0.2	0.3	0.2	0.2	0.2	0.2	0.3	0.3	0.2
Tomato	0.4	0.4	0.2	0.1	0.5	0.4	0.2	0.2	0.6	0.3	0.2	0.4	0.3	0.4
Potato	0.1	0.1	0.1	0.5	0.2	0.1	0.1	0.4	0.2	0.1	0.1	0.1	0.2	0.1
Ampalaya	0.2	0.3	0.2	0.2	0.2	0.3	0.2	0.2	0.2	0.2	0.2	0.2	0.2	0.2
Cabbage	0.1	0.1	0.1	0.2	0.1	0.1	0.1	0.4	0.2	0.1	0.1	0.1	0.1	0.1
Calamansi	0.1	0.1	0.4	0.1	0.1	0.1	0.3	0.1	0.1	0.1	0.4	0.2	0.2	0.2
Mongo	0.1	0.3	0.02	0.04	0.1	0.3	0.02	0.04	0.1	0.3	0.02	0.1	0.2	0.1
Cacao	0.04	0.04	0.05	0.1	0.04	0.04	0.1	0.05	0.04	0.04	0.1	0.04	0.05	0.04
Other Crops	3.1	3.7	2.8	2.8	3.4	3.6	2.8	3.7	3.7	3.5	2.9	3.2	3.3	3.4

Note: Details may not add up to totals due to rounding

Source: Philippine Statistics Authority

## VALUE OF PRODUCTION IN PHILIPPINE AGRICULTURE AND FISHERIES

Table 6c. Percent Distribution of Value of Livestock and Poultry Production at Current Prices  
First Quarter 2019 to Third Quarter 2021  
(in percent)

Subsector/ Commodity	2019				2020				2021			January to September		
	Q1	Q2	Q3	Q4	Q1	Q2	Q3	Q4	Q1	Q2	Q3	2019	2020	2021
Livestock	17.1	17.8	17.7	14.8	16.5	15.4	16.6	14.9	16.8	17.0	17.9	17.5	16.2	17.2
Hog	14.3	14.7	14.5	11.5	13.4	13.0	13.5	11.9	13.9	13.7	14.5	14.5	13.3	14.0
Cattle	1.5	1.6	1.6	1.8	1.7	1.3	1.6	1.6	1.6	1.8	1.8	1.6	1.5	1.7
Carabao	0.7	0.8	0.7	0.9	0.7	0.6	0.7	0.7	0.7	0.9	0.9	0.7	0.7	0.8
Goat	0.6	0.6	0.7	0.6	0.6	0.5	0.7	0.6	0.6	0.6	0.7	0.6	0.6	0.6
Dairy	0.1	0.1	0.1	0.05	0.1	0.1	0.1	0.1	0.1	0.1	0.1	0.1	0.1	0.1
Poultry	11.9	12.5	14.7	14.4	13.9	13.1	15.0	13.4	14.1	14.0	14.6	13.0	14.0	14.2
Chicken	8.3	8.8	10.4	10.3	9.5	8.8	10.0	9.6	9.8	9.5	9.8	9.1	9.4	9.7
Duck	0.2	0.1	0.2	0.2	0.2	0.1	0.2	0.2	0.3	0.2	0.3	0.2	0.2	0.2
Chicken Eggs	3.2	3.2	3.9	3.7	3.9	3.8	4.5	3.4	3.8	3.9	4.2	3.4	4.1	4.0
Duck Eggs	0.2	0.3	0.3	0.3	0.3	0.3	0.3	0.3	0.3	0.3	0.3	0.3	0.3	0.3

Note: Details may not add up to totals due to rounding

Source: Philippine Statistics Authority

Table 6d. Percent Distribution of Value of Fisheries Production at Current Prices  
First Quarter 2019 to Third Quarter 2021  
(in percent)

Subsector/ Commodity	2019				2020				2021			January to September		
	Q1	Q2	Q3	Q4	Q1	Q2	Q3	Q4	Q1	Q2	Q3	2019	2020	2021
Fisheries	14.0	16.8	15.6	15.9	14.0	15.6	14.9	13.3	13.7	16.0	15.7	15.4	14.8	15.1
Milkfish (Bangus)	1.5	2.3	2.8	2.9	1.6	2.5	2.3	2.7	1.6	2.7	2.9	2.2	2.1	2.4
Tilapia	1.5	1.4	1.1	1.5	1.7	1.4	1.1	1.2	1.6	1.5	1.1	1.4	1.4	1.4
Tiger Prawn (Sugpo)	1.0	1.4	1.0	1.6	0.9	1.4	0.7	1.2	0.9	1.4	0.7	1.1	1.0	1.0
Skipjack (Gulyasan)	1.2	1.0	1.2	1.1	0.9	1.0	1.0	0.8	1.1	1.0	1.0	1.1	1.0	1.1
Roundscad (Galunggong)	0.7	0.8	0.7	0.4	0.7	1.0	0.8	0.4	0.7	0.9	0.8	0.8	0.9	0.8
Seaweed	0.5	0.6	0.5	0.9	0.5	0.5	0.5	0.6	0.5	0.5	0.5	0.5	0.5	0.5
Yellowfin Tuna (Tambakol/Bariles)	0.7	0.8	0.6	0.6	0.6	0.7	0.6	0.5	0.5	0.5	0.5	0.7	0.6	0.5
Mudcrab (Alimango)	0.7	0.4	0.5	0.6	0.7	0.4	0.4	0.5	1.0	0.4	0.6	0.5	0.5	0.7
Frigate Tuna (Tulingan)	0.4	0.6	0.5	0.4	0.5	0.5	0.5	0.4	0.4	0.5	0.4	0.5	0.5	0.4
Big-eyed Scad (Matangbaka)	0.4	0.5	0.5	0.5	0.5	0.4	0.5	0.4	0.5	0.5	0.6	0.5	0.5	0.5
Bali Sardinella (Tamban)	0.3	0.5	0.5	0.3	0.3	0.6	0.6	0.3	0.3	0.6	0.6	0.4	0.5	0.5
Squid (Pusit)	0.3	0.4	0.3	0.3	0.3	0.3	0.3	0.3	0.3	0.3	0.3	0.3	0.3	0.3
Blue Crab (Alimasag)	0.2	0.3	0.3	0.2	0.2	0.2	0.4	0.1	0.2	0.3	0.3	0.3	0.3	0.3
Bigeye Tuna (Tambakol/ Bariles)	0.1	0.1	0.2	0.1	0.1	0.1	0.2	0.1	0.1	0.1	0.1	0.1	0.1	0.1
Grouper (Lapu-lapu)	0.2	0.2	0.2	0.2	0.2	0.2	0.5	0.1	0.1	0.2	0.2	0.2	0.3	0.2
Indian Mackerel (Alumahan)	0.3	0.4	0.3	0.3	0.3	0.3	0.3	0.3	0.3	0.3	0.3	0.3	0.3	0.3
Threadfin Bream (Bisugo)	0.3	0.3	0.3	0.3	0.3	0.3	0.3	0.2	0.2	0.2	0.3	0.3	0.3	0.2
Slipmouth (Sapsap)	0.1	0.2	0.2	0.2	0.1	0.1	0.2	0.1	0.1	0.1	0.1	0.2	0.1	0.1
Cavalla (Talakitok)	0.2	0.2	0.2	0.2	0.2	0.2	0.2	0.2	0.2	0.2	0.3	0.2	0.2	0.2
Fimbriated Sardines (Tunsoy)	0.1	0.2	0.1	0.1	0.1	0.1	0.1	0.1	0.1	0.1	0.1	0.1	0.1	0.1
Other Fisheries	3.2	4.0	3.4	3.2	3.1	3.3	3.3	2.8	2.9	3.6	3.8	3.6	3.2	3.4

Note: Details may not add up to totals due to rounding

Source: Philippine Statistics Authority

## VALUE OF PRODUCTION IN PHILIPPINE AGRICULTURE AND FISHERIES

Table 7a. Volume of Crop Production  
First Quarter 2019 to Third Quarter 2021  
(in Thousand Metric Tons)

Subsector/ Commodity	2019				2020				2021			January to September		
	Q1	Q2	Q3	Q4	Q1	Q2	Q3	Q4	Q1	Q2	Q3	2019	2020	2021
<b>Crops</b>														
Palay	4,416.85	3,852.53	3,051.47	7,493.98	4,261.44	4,125.23	3,516.35	7,391.83	4,626.92	4,172.94	3,752.73	11,320.85	11,903.02	12,552.59
Corn	2,425.22	1,172.19	2,723.11	1,658.32	2,296.04	1,352.56	2,817.37	1,652.57	2,445.20	1,437.14	2,292.13	6,320.52	6,465.98	6,174.47
Banana	2,114.50	2,260.97	2,392.67	2,389.54	2,063.11	2,230.66	2,362.50	2,399.87	2,084.16	2,258.90	2,358.23	6,768.14	6,656.28	6,701.28
Coconut	3,308.41	3,324.13	4,059.70	4,072.81	3,167.38	3,263.68	4,002.31	4,057.55	3,141.86	3,292.04	4,079.80	10,692.25	10,433.37	10,513.70
Mango	94.92	556.88	58.36	27.78	94.07	558.07	59.58	27.53	97.90	556.82	59.93	710.16	711.72	714.64
Sugarcane	11,716.43	2,608.98	403.57	5,990.31	12,182.88	5,124.62	499.44	6,592.00	11,634.40	6,908.22	1,052.67	14,728.98	17,806.94	19,595.30
Pineapple	621.37	702.25	712.29	711.94	626.52	712.26	651.13	712.64	662.50	744.82	736.40	2,035.91	1,989.91	2,143.73
Cassava	514.23	751.46	591.96	773.15	515.46	722.79	590.93	778.58	477.68	692.60	589.43	1,857.65	1,829.18	1,759.71
Rubber	45.74	125.37	108.78	151.79	45.75	116.94	104.43	155.28	47.49	123.82	107.13	279.88	267.12	278.44
Sweet Potato	112.29	150.09	134.06	129.42	116.52	157.47	137.70	135.20	115.41	157.68	135.74	396.44	411.69	408.83
Onion	152.48	60.08	0.03	9.49	163.66	55.98	0.02	9.87	141.17	68.27	0.02	212.59	219.67	209.47
Eggplant	80.52	106.33	38.46	24.57	75.40	104.44	39.76	23.13	76.12	106.66	37.77	225.32	219.60	220.54
Coffee	17.16	6.07	5.79	31.02	17.22	5.88	5.75	31.79	19.35	5.87	5.50	29.02	28.85	30.72
Tobacco	12.78	36.41	1.30	0.57	12.72	37.62	0.91	1.19	11.93	36.83	0.94	50.49	51.25	49.70
Abaca	15.85	18.90	20.05	17.40	14.97	18.28	20.09	17.62	12.77	18.20	15.68	54.80	53.33	46.66
Tomato	95.30	71.95	27.91	28.13	94.22	74.27	27.52	26.00	95.87	76.47	27.96	195.16	196.01	200.30
Potato	23.72	13.22	15.41	63.71	23.13	12.52	16.58	61.33	17.02	15.63	14.43	52.35	52.23	47.08
Ampalaya	18.33	30.50	20.55	19.96	18.26	30.67	20.38	18.50	18.63	31.49	19.60	69.38	69.30	69.72
Cabbage	30.93	22.50	15.86	58.77	32.32	22.36	15.07	60.06	29.21	25.27	12.34	69.28	69.75	66.82
Calamansi	14.95	18.02	66.76	26.24	13.31	14.51	55.47	25.39	13.10	13.38	60.10	99.72	83.30	86.58
Mongo	8.14	23.56	1.43	3.12	8.63	23.80	1.47	3.13	9.17	21.77	1.36	33.13	33.90	32.30
Cacao	1.72	1.92	2.27	2.58	2.01	2.02	2.54	2.76	2.25	2.22	2.45	5.91	6.58	6.92
Other Crops	811.10	957.76	752.17	913.60	804.81	961.35	755.15	893.18	798.64	991.61	757.63	2,521.02	2,521.31	2,547.89

Source: Philippine Statistics Authority

Table 7b. Volume of Livestock and Poultry Production  
First Quarter 2019 to Third Quarter 2021  
(in Thousand Metric Tons)

Subsector/ Commodity	2019				2020				2021			January to September		
	Q1	Q2	Q3	Q4	Q1	Q2	Q3	Q4	Q1	Q2	Q3	2019	2020	2021
<b>Livestock</b>														
Hog	567.42	580.11	551.62	597.51	568.67	550.02	508.91	515.05	421.79	406.07	418.07	1,699.15	1,627.60	1,245.93
Cattle	61.30	65.20	59.27	74.85	60.62	46.00	53.36	69.15	53.24	60.99	52.02	185.77	159.98	166.25
Carabao	30.40	37.67	30.05	42.54	29.80	27.67	27.74	35.19	27.30	34.93	30.39	98.12	85.22	92.62
Goat	18.87	17.59	19.19	20.71	17.70	14.20	19.27	20.55	16.43	17.53	17.84	55.65	51.17	51.80
Dairy	6.14	6.27	6.01	5.96	6.44	6.58	6.97	6.72	6.62	6.14	6.72	18.42	19.99	19.48
<b>Poultry</b>														
Chicken	459.06	477.11	465.15	526.09	453.72	440.00	431.77	484.36	402.77	433.11	425.89	1,401.32	1,325.49	1,261.77
Duck	9.62	5.33	7.52	7.63	9.03	4.92	7.69	7.91	7.98	6.81	7.53	22.47	21.64	22.31
Chicken Eggs	142.01	141.45	145.54	154.23	148.17	148.45	154.29	154.87	152.05	167.93	166.82	429.01	450.92	486.81
Duck Eggs	11.17	13.89	10.98	13.53	11.37	13.76	11.23	14.12	11.52	14.00	12.02	36.04	36.36	37.54

Source: Philippine Statistics Authority

## VALUE OF PRODUCTION IN PHILIPPINE AGRICULTURE AND FISHERIES

Table 7c. Volume of Fisheries Production  
First Quarter 2019 to Third Quarter 2021  
(in Thousand Metric Tons)

Subsector/ Commodity	2019				2020				2021			January to September		
	Q1	Q2	Q3	Q4	Q1	Q2	Q3	Q4	Q1	Q2	Q3	2019	2020	2021
<b>Fisheries</b>														
Milkfish (Bangus)	62.89	104.60	112.27	135.19	66.40	106.92	105.46	142.19	67.22	120.33	115.86	279.76	278.77	303.41
Tilapia	89.86	85.75	56.18	89.40	89.47	82.23	56.00	76.63	96.61	93.98	59.16	231.79	227.70	249.75
Tiger Prawn (Sugpo)	8.39	12.37	8.89	16.35	8.25	12.65	7.89	13.67	8.28	12.49	8.01	29.66	28.78	28.78
Skipjack (Gulyasan)	69.91	61.89	63.81	70.77	54.80	74.14	64.04	67.62	67.66	65.28	56.49	195.61	192.98	189.43
Roundscad (Galungong)	53.35	62.97	42.51	30.17	49.31	74.90	47.97	29.83	41.63	61.26	42.29	158.83	172.17	145.18
Seaweed	351.93	309.23	306.72	532.08	349.77	312.48	303.32	503.08	339.51	310.96	292.14	967.88	965.57	942.61
Yellowfin Tuna (Tambako/Bariles)	25.51	28.83	18.68	26.33	20.73	29.93	21.72	22.51	17.08	19.47	17.40	73.03	72.38	53.95
Mudcrab (Alimango)	6.24	4.60	5.35	6.09	6.85	4.29	4.83	6.22	8.23	4.87	6.24	16.19	15.97	19.34
Frigate Tuna (Tulingan)	26.57	36.67	24.63	23.64	25.53	33.34	28.00	23.60	22.89	27.70	22.09	87.87	86.86	72.68
Big-eyed Scad (Matangbaka)	24.62	29.93	25.74	29.14	25.63	25.98	25.50	28.11	26.80	26.71	27.96	80.30	77.11	81.46
Bali Sardinella (Tamban)	36.51	86.47	78.01	46.51	50.47	126.15	102.53	60.73	55.95	113.58	96.62	201.00	279.15	266.16
Squid (Pusit)	10.54	14.96	10.28	11.17	10.73	12.70	10.28	10.70	10.37	13.26	10.87	35.78	33.71	34.50
Blue Crab (Alimasag)	5.50	8.34	8.80	7.04	6.68	7.68	11.06	5.63	6.60	9.54	8.61	22.63	25.42	24.76
Bigeye Tuna (Tambako/ Bariles)	3.41	4.54	5.45	4.36	3.52	4.44	7.52	4.45	3.53	4.52	4.43	13.40	15.48	12.49
Grouper (Lapu-lapu)	4.44	5.10	5.68	4.50	4.32	4.98	5.83	4.46	3.76	5.43	6.03	15.23	15.13	15.22
Indian Mackerel (Alumahan)	13.93	18.29	13.55	14.45	12.65	13.96	13.07	13.96	12.45	13.66	12.05	45.77	39.69	38.16
Threadfin Bream (Bisugo)	9.48	10.42	10.55	10.94	9.97	9.82	10.47	9.10	8.15	8.19	8.47	30.44	30.26	24.81
Slipmouth (Sapsap)	10.20	11.30	11.59	13.38	7.93	9.33	11.09	11.23	9.16	9.77	9.72	33.09	28.35	28.65
Cavalla (Talakitok)	6.14	6.56	5.71	5.82	5.78	7.08	6.79	6.29	6.32	7.27	7.42	18.41	19.65	21.01
Fimbriated Sardines (Tunsoy)	23.60	24.23	15.77	14.13	17.45	13.10	12.34	8.90	10.76	11.30	13.20	63.60	42.89	35.26
Other Fisheries	170.02	214.60	157.57	181.14	160.16	211.11	160.77	171.37	150.66	209.88	170.38	542.18	532.04	530.92

Source: Philippine Statistics Authority

Table 8a. Growth Rates of Volume of Crop Production  
First Quarter 2019 to Third Quarter 2021  
(in percent)

Subsector/ Commodity	2019-2020				2020-2021			January to September	
	Q1	Q2	Q3	Q4	Q1	Q2	Q3	2019-2020	2020-2021
<b>Crops</b>									
Palay	-3.5	7.1	15.2	-1.4	8.6	1.2	6.7	5.1	5.5
Corn	-5.3	15.4	3.5	-0.3	6.5	6.3	-18.6	2.3	-4.5
Banana	-2.4	-1.3	-1.3	0.4	1.0	1.3	-0.2	-1.7	0.7
Coconut	-4.3	-1.8	-1.4	-0.4	-0.8	0.9	1.9	-2.4	0.8
Mango	-0.9	0.2	2.1	-0.9	4.1	-0.2	0.6	0.2	0.4
Sugarcane	4.0	96.4	23.8	10.0	-4.5	34.8	110.8	20.9	10.0
Pineapple	0.8	1.4	-8.6	0.1	5.7	4.6	13.1	-2.3	7.7
Cassava	0.2	-3.8	-0.2	0.7	-7.3	-4.2	-0.3	-1.5	-3.8
Rubber	0.04	-6.7	-4.0	2.3	3.8	5.9	2.6	-4.6	4.2
Sweet Potato	3.8	4.9	2.7	4.5	-1.0	0.1	-1.4	3.8	-0.7
Onion	7.3	-6.8	-1.2	4.0	-13.7	22.0	-8.1	3.3	-4.6
Eggplant	-6.4	-1.8	3.4	-5.9	1.0	2.1	-5.0	-2.5	0.4
Coffee	0.3	-3.1	-0.7	2.5	12.4	-0.3	-4.3	-0.6	6.5
Tobacco	-0.5	3.3	-30.0	109.3	-6.2	-2.1	3.2	1.5	-3.0
Abaca	-5.6	-3.3	0.2	1.2	-14.7	-0.4	-21.9	-2.7	-12.5
Tomato	-1.1	3.2	-1.4	-7.6	1.8	3.0	1.6	0.4	2.2
Potato	-2.5	-5.3	7.5	-3.7	-26.4	24.8	-13.0	-0.2	-9.9
Ampalaya	-0.4	0.5	-0.8	-7.3	2.0	2.7	-3.8	-0.1	0.6
Cabbage	4.5	-0.6	-5.0	2.2	-9.6	13.1	-18.1	0.7	-4.2
Calamansi	-10.9	-19.5	-16.9	-3.2	-1.6	-7.8	8.3	-16.5	3.9
Mongo	6.0	1.0	3.0	0.4	6.2	-8.5	-7.6	2.3	-4.7
Cacao	16.7	5.6	12.0	7.1	11.8	9.9	-3.6	11.3	5.3
Other Crops	-0.8	0.4	0.4	-2.2	-0.8	3.1	0.3	0.01	1.1

Source: Philippine Statistics Authority

## VALUE OF PRODUCTION IN PHILIPPINE AGRICULTURE AND FISHERIES

Table 8b. Growth Rates of Volume of Livestock and Poultry Production  
First Quarter 2019 to Third Quarter 2021  
(in percent)

Subsector/ Commodity	2019-2020				2020-2021			January to September	
	Q1	Q2	Q3	Q4	Q1	Q2	Q3	2019-2020	2020-2021
<b>Livestock</b>									
Hog	0.2	-5.2	-7.7	-13.8	-25.8	-26.2	-17.8	-4.2	-23.4
Cattle	-1.1	-29.5	-10.0	-7.6	-12.2	32.6	-2.5	-13.9	3.9
Carabao	-2.0	-26.5	-7.7	-17.3	-8.4	26.2	9.5	-13.1	8.7
Goat	-6.2	-19.3	0.4	-0.8	-7.2	23.4	-7.4	-8.1	1.2
Dairy	4.9	5.0	16.0	12.7	2.8	-6.6	-3.6	8.5	-2.5
<b>Poultry</b>									
Chicken	-1.2	-7.8	-7.2	-7.9	-11.2	-1.6	-1.4	-5.4	-4.8
Duck	-6.2	-7.8	2.3	3.7	-11.6	38.4	-2.1	-3.7	3.1
Chicken Eggs	4.3	4.9	6.0	0.4	2.6	13.1	8.1	5.1	8.0
Duck Eggs	1.8	-1.0	2.3	4.4	1.3	1.8	7.0	0.9	3.2

Source: Philippine Statistics Authority

Table 8c. Growth Rates of Volume of Fisheries Production  
First Quarter 2019 to Third Quarter 2021  
(in percent)

Subsector/ Commodity	2019-2020				2020-2021			January to September	
	Q1	Q2	Q3	Q4	Q1	Q2	Q3	2019-2020	2020-2021
<b>Fisheries</b>									
Milkfish (Bangus)	5.6	2.2	-6.1	5.2	1.2	12.5	9.9	-0.4	8.8
Tilapia	-0.4	-4.1	-0.3	-14.3	8.0	14.3	5.7	-1.8	9.7
Tiger Prawn (Sugpo)	-1.7	2.3	-11.3	-16.4	0.4	-1.3	1.6	-2.9	-0.003
Skipjack (Gulyasan)	-21.6	19.8	0.4	-4.4	23.5	-12.0	-11.8	-1.3	-1.8
Roundscad (Galunggong)	-7.6	18.9	12.8	-1.1	-15.6	-18.2	-11.8	8.4	-15.7
Seaweed	-0.6	1.1	-1.1	-5.5	-2.9	-0.5	-3.7	-0.2	-2.4
Yellowfin Tuna (Tambakol/Bariles)	-18.7	3.8	16.3	-14.5	-17.6	-35.0	-19.9	-0.9	-25.5
Mudcrab (Alimango)	9.7	-6.7	-9.7	2.1	20.2	13.5	29.2	-1.3	21.1
Frigate Tuna (Tulangan)	-3.9	-9.1	13.6	-0.2	-10.3	-16.9	-21.1	-1.1	-16.3
Big-eyed Scad (Matangbaka)	4.1	-13.2	-0.9	-3.5	4.6	2.8	9.7	-4.0	5.6
<i>Bali Sardinella</i> (Tamban)	38.2	45.9	31.4	30.6	10.9	-10.0	-5.8	38.9	-4.7
Squid (Pusit)	1.8	-15.1	0.05	-4.2	-3.4	4.4	5.7	-5.8	2.3
Blue Crab (Alimasag)	21.5	-7.9	25.6	-20.1	-1.2	24.2	-22.1	12.3	-2.6
Bigeye Tuna (Tambakol/ Bariles)	3.2	-2.1	38.1	2.1	0.3	1.9	-41.1	15.6	-19.4
Grouper (Lapu-lapu)	-2.8	-2.4	2.5	-0.8	-12.9	9.0	3.5	-0.7	0.6
Indian Mackerel (Alumahan)	-9.2	-23.6	-3.5	-3.4	-1.6	-2.2	-7.8	-13.3	-3.8
Threadfin Bream (Bisugo)	5.2	-5.8	-0.7	-16.8	-18.3	-16.6	-19.1	-0.6	-18.0
Slipmouth (Sapsap)	-22.2	-17.4	-4.3	-16.0	15.5	4.7	-12.4	-14.3	1.0
Cavalla (Talakitok)	-5.8	8.0	18.8	8.1	9.2	2.6	9.4	6.8	6.9
Fimbriated Sardines (Tunsoy)	-26.0	-45.9	-21.7	-37.0	-38.3	-13.7	7.0	-32.6	-17.8
Other Fisheries	-5.8	-1.6	2.0	-5.4	-5.9	-0.6	6.0	-1.9	-0.2

Source: Philippine Statistics Authority

## VALUE OF PRODUCTION IN PHILIPPINE AGRICULTURE AND FISHERIES

Table 9a. Average Farmgate Prices of Crops  
First Quarter 2019 to Third Quarter 2021  
(PhP Per Kilogram)

Subsector/ Commodity	2019				2020				2021			January to September		
	Q1	Q2	Q3	Q4	Q1	Q2	Q3	Q4	Q1	Q2	Q3	2019	2020	2021
<b>Crops</b>														
Palay	18.85	17.92	16.19	15.05	16.22	18.56	17.04	15.31	16.77	17.07	16.92	17.82	17.27	16.91
Corn	13.89	14.04	13.53	11.67	12.46	12.64	12.57	11.81	12.74	13.49	15.26	13.77	12.54	13.85
Banana	22.27	22.65	22.96	22.67	23.84	26.48	26.52	26.71	25.88	24.56	23.23	22.64	25.68	24.50
Coconut	7.09	7.17	6.92	6.89	7.27	7.38	7.17	8.38	8.60	8.47	8.10	7.05	7.27	8.37
Mango	42.51	32.03	53.57	56.88	46.03	37.13	44.86	55.18	54.59	40.98	42.33	35.20	38.95	42.96
Sugarcane	1.91	2.00	1.02	1.81	1.77	1.81	1.28	1.73	1.66	1.74	1.61	1.90	1.77	1.68
Pineapple	13.40	14.45	12.94	15.44	15.06	13.29	12.57	44.07	15.34	14.20	13.06	13.60	13.61	14.16
Cassava	6.34	6.32	11.73	8.45	7.93	8.45	8.90	11.88	8.27	7.86	8.50	8.05	8.45	8.19
Rubber	23.14	25.67	25.09	23.81	22.86	18.43	21.02	25.89	25.65	27.15	26.74	25.03	20.20	26.74
Sweet Potato	16.75	19.26	20.02	18.15	20.06	22.30	22.46	21.48	20.67	19.03	21.76	18.81	21.72	20.40
Onion	36.79	22.83	39.06	55.66	62.04	49.12	54.04	71.69	54.06	49.81	51.27	32.84	58.75	52.68
Eggplant	30.42	24.82	28.39	37.01	33.73	26.32	22.01	41.79	43.05	28.31	30.78	27.43	28.08	33.82
Coffee	52.60	56.26	50.10	48.35	52.15	50.62	46.48	45.89	47.89	50.53	50.75	52.87	50.71	48.91
Tobacco	76.98	109.07	335.46	435.71	83.49	106.12	421.83	633.95	83.23	105.58	389.48	106.79	106.12	105.59
Abaca	62.53	62.72	63.34	62.37	62.82	62.96	63.15	63.12	63.83	62.26	63.99	62.89	62.99	63.27
Tomato	21.21	26.84	28.93	25.45	22.57	22.23	26.41	46.57	30.70	20.51	33.53	24.39	22.98	27.21
Potato	26.39	27.61	35.88	37.96	41.63	44.38	35.25	40.32	45.47	26.92	31.00	29.49	40.26	34.88
Ampalaya	42.11	41.05	39.68	42.69	42.44	40.55	34.41	50.75	49.08	38.57	43.54	40.92	39.24	42.78
Cabbage	15.17	22.28	15.24	18.21	19.41	29.91	17.55	34.63	35.01	18.12	37.90	17.49	22.38	29.16
Calamansi	26.10	35.47	24.44	26.82	27.93	30.18	23.45	25.27	34.56	33.91	28.94	26.68	25.34	30.56
Mongo	60.16	58.36	65.10	66.33	61.21	60.13	62.08	62.95	65.60	62.64	66.45	59.10	60.49	63.64
Cacao	95.62	93.21	89.06	99.83	99.40	99.96	94.03	98.42	93.79	91.83	93.25	92.32	97.50	92.97
Other Crops	17.43	17.34	15.45	15.53	18.71	17.70	15.62	22.84	22.33	17.69	16.84	16.80	17.40	18.89

Source: Philippine Statistics Authority

Table 9b. Average Farmgate Prices of Livestock and Poultry  
First Quarter 2019 to Third Quarter 2021  
(PhP Per Kilogram)

Subsector/ Commodity	2019				2020				2021			January to September		
	Q1	Q2	Q3	Q4	Q1	Q2	Q3	Q4	Q1	Q2	Q3	2019	2020	2021
<b>Livestock</b>														
Hog	113.97	113.35	108.09	96.13	105.95	111.04	112.53	129.07	161.08	168.79	154.58	111.85	109.73	161.41
Cattle	110.85	111.66	113.83	118.29	126.62	127.57	127.99	132.49	143.71	148.32	151.81	112.09	127.35	147.94
Carabao	97.46	98.03	99.92	101.87	108.87	108.20	109.18	112.62	120.08	125.57	125.51	98.43	108.75	123.93
Goat	146.78	150.94	151.13	154.29	148.49	149.66	149.60	154.85	163.88	169.97	169.28	149.59	149.23	167.80
Dairy	41.76	42.50	42.50	41.64	44.26	44.25	45.41	46.77	53.36	52.80	53.17	42.25	44.66	53.11
<b>Poultry</b>														
Chicken	81.93	82.98	91.50	97.96	93.92	94.37	97.95	109.83	118.77	110.19	102.90	85.47	95.38	110.47
Duck	110.31	114.48	117.91	129.73	117.55	129.94	135.54	151.21	157.23	167.42	152.65	113.84	126.76	158.79
Chicken Eggs	100.52	100.80	109.17	119.10	118.38	121.07	123.33	122.55	122.96	117.75	113.05	103.55	120.96	117.77
Duck Eggs	97.94	97.87	103.88	104.96	105.97	104.18	107.19	105.38	109.86	105.40	107.45	99.72	105.67	107.43

Source: Philippine Statistics Authority

## VALUE OF PRODUCTION IN PHILIPPINE AGRICULTURE AND FISHERIES

Table 9c. Average Farmgate Prices of Fisheries  
First Quarter 2019 to Third Quarter 2021  
(Php Per Kilogram)

Subsector/ Commodity	2019				2020				2021			January to September		
	Q1	Q2	Q3	Q4	Q1	Q2	Q3	Q4	Q1	Q2	Q3	2019	2020	2021
<b>Fisheries</b>														
Milkfish (Bangus)	109.50	98.15	103.46	107.88	110.45	108.35	94.12	106.62	114.25	111.25	110.81	102.83	103.47	111.75
Tilapia	75.64	74.15	81.87	83.05	82.74	79.84	86.74	87.17	83.23	80.47	85.37	76.60	82.67	82.70
Tiger Prawn (Sugpo)	530.75	521.18	456.51	498.99	496.42	533.27	373.73	498.16	525.05	542.68	416.33	504.49	479.01	502.44
Skipjack (Gulyasan)	78.25	74.00	75.64	78.80	77.16	63.70	69.23	68.49	81.97	79.29	78.29	76.06	69.36	79.95
Roundscad (Galunggong)	61.27	59.29	68.83	74.59	66.73	62.80	71.36	80.99	80.52	73.80	86.09	62.51	66.31	79.31
Seaweed	7.00	8.02	7.29	8.77	7.03	7.88	7.52	6.78	7.49	7.47	8.11	7.42	7.46	7.68
Yellowfin Tuna (Tambakol/Bariles)	129.97	131.11	129.27	120.33	128.79	103.06	111.11	120.11	133.68	137.54	140.31	130.24	112.85	137.21
Mudcrab (Alimango)	474.70	411.09	362.59	463.43	473.12	444.71	342.91	413.74	601.56	433.69	395.94	419.60	426.10	492.96
Frigate Tuna (Tulingan)	76.32	77.31	83.87	86.44	83.32	75.01	79.51	88.13	86.70	87.21	88.07	78.85	78.90	87.31
Big-eyed Scad (Matangbaka)	79.55	79.60	82.69	82.24	82.93	79.59	82.83	88.97	87.46	90.46	95.41	80.57	81.77	91.17
Bali Sardinella (Tamban)	31.13	27.02	27.26	30.15	27.23	21.90	26.54	27.52	27.85	28.56	28.32	27.86	24.57	28.32
Squid (Pusit)	119.51	120.33	123.27	129.98	130.47	120.78	123.81	130.84	131.70	127.92	135.40	120.93	124.79	131.41
Blue Crab (Alimasag)	164.05	162.68	145.14	144.79	156.25	137.98	143.66	134.22	154.68	176.00	169.32	156.19	145.25	167.99
Bigeye Tuna (Tambakol/ Bariles)	145.11	138.58	137.45	150.95	143.66	128.50	116.69	131.85	154.08	146.50	139.18	139.78	126.21	146.04
Grouper (Lapu-lapu)	163.88	178.19	175.46	184.73	182.11	171.24	347.27	170.70	187.17	192.01	183.71	173.00	242.15	187.53
Indian Mackerel (Alumahan)	85.99	86.04	88.35	91.34	91.04	85.16	94.14	100.34	100.21	94.61	94.86	86.71	89.99	96.52
Threadfin Bream (Bisugo)	135.42	131.53	126.99	135.80	140.63	125.67	135.42	136.07	134.77	132.24	150.07	131.17	133.97	139.16
Slipmouth (Sapsap)	61.96	68.04	67.48	61.94	68.37	68.66	65.38	64.20	74.43	73.17	61.50	65.97	67.30	69.62
Cavalla (Talakitok)	132.37	126.00	127.05	136.99	142.03	128.17	128.74	135.66	148.66	145.50	153.13	128.45	132.45	149.15
Fimbriated Sardines (Tunsoy)	26.96	29.72	37.93	34.24	29.98	35.85	39.11	42.48	36.97	42.59	39.67	30.73	34.40	39.78
Other Fisheries	85.58	83.71	89.37	88.78	87.93	74.08	86.34	90.86	94.59	85.21	100.07	85.94	81.95	92.64

Source: Philippine Statistics Authority

Table 10a. Growth Rates of Average Farmgate Prices of Crops  
First Quarter 2019 to Third Quarter 2021  
(in percent)

Subsector/ Commodity	2019-2020				2020-2021			January to September	
	Q1	Q2	Q3	Q4	Q1	Q2	Q3	2019-2020	2020-2021
<b>Crops</b>									
Palay	-1.3	5.4	1.6	18.4	5.2	-1.5	2.0	1.9	1.8
Corn	-14.0	3.5	5.3	1.8	3.4	-8.0	-0.7	-3.1	-2.1
Banana	-10.3	-9.9	-7.2	1.2	2.3	6.7	21.4	-8.9	10.4
Banana	7.1	16.9	15.5	17.8	8.6	-7.3	-12.4	13.4	-4.6
Coconut	2.6	2.9	3.6	21.7	18.3	14.8	13.0	3.1	15.2
Mango	8.3	15.9	-16.2	-3.0	18.6	10.4	-5.7	10.7	10.3
Sugarcane	-7.3	-9.1	25.4	-4.7	-6.3	-4.0	26.0	-6.9	-4.8
Pineapple	12.4	-8.0	-2.9	185.5	1.9	6.8	3.9	0.1	4.0
Cassava	25.1	33.6	-24.1	40.7	4.3	-6.9	-4.5	4.9	-3.1
Rubber	-1.2	-28.2	-16.2	8.7	12.2	47.3	27.2	-19.3	32.3
Sweet Potato	19.8	15.8	12.2	18.3	3.0	-14.7	-3.1	15.5	-6.1
Onion	68.6	115.1	38.4	28.8	-12.9	1.4	-5.1	78.9	-10.3
Eggplant	10.9	6.1	-22.5	12.9	27.6	7.6	39.8	2.4	20.4
Coffee	-0.8	-10.0	-7.2	-5.1	-8.2	-0.2	9.2	-4.1	-3.5
Tobacco	8.4	-2.7	25.7	45.5	-0.3	-0.5	-7.7	-0.6	-0.5
Abaca	0.5	0.4	-0.3	1.2	1.6	-1.1	1.3	0.2	0.4
Tomato	6.4	-17.2	-8.7	83.0	36.1	-7.7	27.0	-5.8	18.4
Potato	57.8	60.8	-1.8	6.2	9.2	-39.3	-12.0	36.5	-13.4
Ampalaya	0.8	-1.2	-13.3	18.9	15.7	-4.9	26.5	-4.1	9.0
Cabbage	28.0	34.2	15.2	90.1	80.4	-39.4	116.0	27.9	30.3
Calamansi	7.0	-14.9	-4.1	-5.8	23.7	12.3	23.4	-5.0	20.6
Mongo	1.7	3.0	-4.6	-5.1	7.2	4.2	7.0	2.4	5.2
Cacao	3.9	7.2	5.6	-1.4	-5.6	-8.1	-0.8	5.6	-4.6
Other Crops	7.4	2.1	1.1	47.0	19.3	-0.1	7.9	3.6	8.6

Source: Philippine Statistics Authority

## VALUE OF PRODUCTION IN PHILIPPINE AGRICULTURE AND FISHERIES

Table 10b. Growth Rates of Average Farmgate Prices of Livestock and Poultry  
First Quarter 2019 to Third Quarter 2021  
(in percent)

Subsector/ Commodity	2019-2020				2020-2021			January to September	
	Q1	Q2	Q3	Q4	Q1	Q2	Q3	2019-2020	2020-2021
Livestock	-4.2	-0.7	4.9	28.8	44.4	46.0	33.6	-0.1	41.3
Hog	-7.0	-2.0	4.1	34.3	52.0	52.0	37.4	-1.9	47.1
Cattle	14.2	14.2	12.4	12.0	13.5	16.3	18.6	13.6	16.2
Carabao	11.7	10.4	9.3	10.6	10.3	16.1	15.0	10.5	14.0
Goat	1.2	-0.8	-1.0	0.4	10.4	13.6	13.2	-0.2	12.4
Dairy	6.0	4.1	6.9	12.3	20.6	19.3	17.1	5.7	18.9
Poultry	15.3	15.8	9.2	9.6	19.6	11.1	1.2	13.3	10.4
Chicken	14.6	13.7	7.0	12.1	26.5	16.8	5.1	11.6	15.8
Duck	6.6	13.5	15.0	16.6	33.8	28.8	12.6	11.3	25.3
Chicken Eggs	17.8	20.1	13.0	2.9	3.9	-2.7	-8.3	16.8	-2.6
Duck Eggs	8.2	6.5	3.2	0.4	3.7	1.2	0.2	6.0	1.7

Source: Philippine Statistics Authority

Table 10c. Growth Rates of Average Farmgate Prices of Fisheries  
First Quarter 2019 to Third Quarter 2021  
(in percent)

Subsector/ Commodity	2019-2020				2020-2021			January to September	
	Q1	Q2	Q3	Q4	Q1	Q2	Q3	2019-2020	2020-2021
Fisheries	2.1	-3.3	-2.8	-1.6	6.6	10.7	11.4	-1.6	9.6
Milkfish	0.9	10.4	-9.0	-1.2	3.4	2.7	17.7	0.6	8.0
Tilapia	9.4	7.7	5.9	5.0	0.6	0.8	-1.6	7.9	0.03
Tiger Prawn	-6.5	2.3	-18.1	-0.2	5.8	1.8	11.4	-5.1	4.9
Skipjack (Gulyasan)	-1.4	-13.9	-8.5	-13.1	6.2	24.5	13.1	-8.8	15.3
Roundscad (Galunggong)	8.9	5.9	3.7	8.6	20.7	17.5	20.6	6.1	19.6
Seaweed	0.4	-1.6	3.1	-22.7	6.6	-5.2	7.9	0.6	2.9
Yellowfin Tuna (Tambakol/Bariles)	-0.9	-21.4	-14.0	-0.2	3.8	33.5	26.3	-13.4	21.6
Mudcrab	-0.3	8.2	-5.4	-10.7	27.1	-2.5	15.5	1.5	15.7
Frigate Tuna (Tulangan)	9.2	-3.0	-5.2	2.0	4.1	16.3	10.8	0.1	10.7
Big-eyed Scad (Matangbaka)	4.2	-0.01	0.2	8.2	5.5	13.7	15.2	1.5	11.5
Bali Sardinella (Tamban)	-12.5	-18.9	-2.6	-8.7	2.2	30.4	6.7	-11.8	15.3
Squid (Pusit)	9.2	0.4	0.4	0.7	0.9	5.9	9.4	3.2	5.3
Blue Crab (Alimasag)	-4.8	-15.2	-1.0	-7.3	-1.0	27.6	17.9	-7.0	15.7
Bigeye Tuna (Tambakol/ Bariles)	-1.0	-7.3	-15.1	-12.7	7.2	14.0	19.3	-9.7	15.7
Grouper (Lapu-lapu)	11.1	-3.9	97.9	-7.6	2.8	12.1	-47.1	40.0	-22.6
Indian Mackerel (Alumahan)	5.9	-1.0	6.6	9.9	10.1	11.1	0.8	3.8	7.3
Threadfin Bream (Bisugo)	3.8	-4.5	6.6	0.2	-4.2	5.2	10.8	2.1	3.9
Slipmouth (Sapsap)	10.3	0.9	-3.1	3.6	8.9	6.6	-5.9	2.0	3.4
Cavalla (Talakitok)	7.3	1.7	1.3	-1.0	4.7	13.5	18.9	3.1	12.6
Fimbriated Sardines (Tunsoy)	11.2	20.6	3.1	24.1	23.3	18.8	1.4	11.9	15.6
Other Fisheries	2.8	-11.5	-3.4	2.3	7.6	15.0	15.9	-4.6	13.0

Source: Philippine Statistics Authority



**VALUE OF PRODUCTION IN PHILIPPINE AGRICULTURE AND FISHERIES  
PHILIPPINE STATISTICS AUTHORITY**

**DENNIS S. MAPA, Ph.D.**  
Undersecretary  
National Statistician and Civil Registrar General

*SECTORAL STATISTICS OFFICE*

**MACROECONOMIC ACCOUNTS SERVICE**

**VIVIAN R. ILARINA**  
Assistant National Statistician

**AGRICULTURAL ACCOUNTS DIVISION**

**Manuela S. Nalugon**  
(Supervising Statistical Specialist)  
Officer-in-Charge

**Reynante A. Santos**  
Senior Statistical Specialist

**Maria Clarinda E. De Guzman**  
Senior Statistical Specialist

**Joynabel S. Paraguison**  
Statistical Specialist II

**Donita Rose S. Baluso**  
Statistical Specialist II

**Joly M. Navales**  
Statistical Specialist I

**Danica L. Quebral**  
Statistical Analyst

For Inquiries:

## PHILIPPINE STATISTICS AUTHORITY

PSA Complex, East Avenue, Diliman, Quezon City, Philippines 1101

Tel. No. +63(2) 84626600 loc. 820 • Telefax No. +63(2) 84626600 loc. 839

E-mail address: [info@psa.gov.ph](mailto:info@psa.gov.ph) • [kmcd.staff@psa.gov.ph](mailto:kmcd.staff@psa.gov.ph)



Visit us on  
[www.psa.gov.ph](http://www.psa.gov.ph)



Like us on Facebook  
[/PhilippineStatisticsAuthority](https://www.facebook.com/PhilippineStatisticsAuthority)



Follow us on Twitter  
[@PSAgovph](https://twitter.com/PSAgovph)