



REPUBLIC OF THE PHILIPPINES
PHILIPPINE STATISTICS AUTHORITY

2019 Commodity Flow in the Philippines



Source of Images for Publication Cover

www.freightwaves.com

www.philippineairlines.com

www.carfinderph.com

COMMODITY FLOW

IN THE

PHILIPPINES

2019



REPUBLIC OF THE PHILIPPINES
PHILIPPINE STATISTICS AUTHORITY
SOLID•RESPONSIVE•WORLD-CLASS



REPUBLIC OF THE PHILIPPINES

**HIS EXCELLENCY
PRESIDENT RODRIGO ROA DUTERTE**



PHILIPPINE STATISTICS AUTHORITY

DENNIS S. MAPA, Ph.D.
Undersecretary
National Statistician and Civil Registrar General

ISSN-0119-9293

Terms of Use: The Commodity Flow in the Philippines is a publication of the Philippines Statistics Authority (PSA). The PSA reserves exclusive right to reproduce this publication in whatever form. Should any portion of this publication be included in a report/article, the title of the publication and the PSA should be cited as the source of the data. The PSA will not be responsible for any information derived from the processing of data contained in this publication.

FOREWORD

The **2019 Commodity Flow in the Philippines** is an annual publication of the Philippine Statistics Authority (PSA) that provides data on the quantity and value of regional commodity flow by mode of transport, and by port of origin and destination. This publication also includes data on the number of passengers by province and region.

Data on the inflow and outflow of commodities in the different regions serve as bases in the formulation and implementation of the various regional development programs like countryside development and port planning.

The PSA sincerely acknowledges the unwavering support extended by the Philippine Airlines, Philippine Ports Authority, and various shipping companies in providing the source documents needed in compiling domestic trade statistics.



DENNIS S. MAPA, Ph.D.

Undersecretary

National Statistician and Civil Registrar General

Quezon City, Philippines
June 2020

This page is intentionally left blank

TABLE OF CONTENTS

	Page
Foreword	iv
Standard symbols, units of measure and acronyms used in the publication	viii
 Explanatory Note	
Introduction	1
Coverage	2
Sources of Data	2
Data Items	2
Commodity Classification	3
Processing at the PSA Provincial Offices	3
Geographic Classification	4
Other Available data	4
 Highlights	 5
 Summary Statistical Tables on Commodity Flow in the Philippines	
Table 1 Quantity and Value of Domestic Trade by Mode of Transport and Commodity Section: 2019 and 2018	12
Table 2 Quantity and Value of Domestic Trade by Mode of Transport and Region: 2019 and 2018	13
Table 3 Total Value of Domestic Trade Balances in the Philippines by Mode of Transport and Region: 2019 and 2018	14
Table 4 Quantity and Value of Domestic Trade by Commodity Section, Island Group of Origin and Destination, and Mode of Transport: 2019	15
Table 5 Commodity Flow from the National Capital Region by Commodity Section, Region of Destination, and Mode of Transport: 2019 and 2018	18
Table 6 Regional Commodity Flow in the Philippines by Region of Origin and Destination, and Mode of Transport: 2019 and 2018	22

Summary Statistical Tables on Commodity Flow in the Philippines – *continued*

Table 7 Quantity and Value of Domestic Trade Classified
by Commodity Section and Mode of Transport: 2019 28

Table 8 Regional Commodity Flow in the Philippines by Region of Origin
and Destination, and Mode of Transport: 2019 29

Table 9 Quantity and Value of Coastwise Trade by Port of Origin: 2019 35

Table 10 Quantity and Value of Domestic Trade by Commodity Division
and Mode of Transport: 2019 36

Table 11 Quantity, Value and Freight Revenue of Air Trade
by Regions of Origin and Destination: 2019 38

Table 12 Quantity, Value and Freight Revenue of Air Trade by
Commodity Section and Regions of Origin and Destination: 2019 40

Table 13 Number of Passengers by Region,
Port of Origin and Year: 2015–2019 52

Glossary of Terms 55

Appendices

Appendix A: Coasting Manifest 57

Appendix B: Passenger Manifest 58

Appendix C: Air Waybill 59

Appendix D: Processing Sheet for Coastwise Trade 60

Appendix E: Processing Sheet for Passenger 61

Appendix F: PSA Organizational Structure
in the Domestic Trade Statistics Compilation 62

Standard symbols, units of measure and acronyms used in this publication

*	Quantity less than 0.5 tons
-	No transaction
kg	Kilogram
n. e. c.	Not elsewhere classified
CFP	Commodity Flow in the Philippines
PSA	Philippine Statistics Authority
PhP	Philippine Peso
DomStat	Domestic Trade Statistics System
SITC	United Nations Standard International Trade Classification
CAR	Cordillera Administrative Region
BARMM	Bangsamoro Autonomous Region in Muslim Mindanao
NEDA	National Economic Development Authority
BOC	Bureau of Customs
SOCCSKSARGEN	South Cotabato, Cotabato City, North Cotabato, Sarangani, & Sultan Kudarat
PAL	Philippine Airlines
AWB	Air Waybill
PNR	Philippine National Railway
PSCC	Philippine Standard Commodity Classification
NCR	National Capital Region
CALABARZON	Cavite, Laguna, Batangas, Rizal, Quezon
MIMAROPA	Occidental Mindoro, Oriental Mindoro, Marinduque, Romblon, Palawan
PPA	Philippine Ports Authority

Explanatory Note

2019 Commodity Flow in the Philippines

Introduction

The Commodity Flow in the Philippines is a compilation of data on commodities carried through air and water transport systems in the country. It gathers information on the movement of commodities within the Philippines to enable policy-makers to monitor domestic trade.

The domestic trade data contained in this report pertains to the flow of goods through airports and seaports in the country, whether for government or private use, or for commercial purposes. Trade in land is excluded because of the absence of approach/system to capture such information. Since 2007, rail transport statistics are excluded due to the rehabilitation and upgrading of the Philippine National Railway (PNR).

Coasting manifests are collected from major ports and other active seaports listed by the Philippine Ports Authority (PPA) all over the country. On the other hand, air waybills are collected from all domestic airports operated by the Philippine Airlines (PAL) nationwide.

There are two kinds of domestic trade statistics in this report, namely:

- a. Air trade statistics which capture movement of commodities from one airport to another within the country through air transport system; and
- b. Coastwise trade and coastwise passenger statistics which capture the flow of commodities/passenger from one port to another within the country through water transport system.

Data on the inflow and outflow value of commodities in the different regions of the country are used to construct inter-regional and inter-industry relation tables. These serve as bases in the formulation and implementation of various regional development programs like countryside development and port planning.

Coverage

The following are **excluded** in the compilation of domestic data: (1) fishing ports; (2) goods transported by vessels of the Philippine Navy; (3) fish and other marine products landed direct from the sea; (4) service cargoes for consumption by vessel crew; and (5) cadaver.

Sources of Data

The source documents for coastwise trade statistics are the Outward Coasting Manifests and Coastwise Passenger Manifests for cargo and passenger, respectively. These forms are submitted by masters of vessels plying the inter-island ports to the collectors or authorized representatives of PPA before the vessel leaves the port area. The Philippine Statistics Authority (PSA) personnel collect copies of these documents from the PPA designated collection points in the provinces.

On the other hand, the source document for air trade statistics is the air waybill issued by PAL to every consignee. The acceptance and sales clerks of the airline prepare an extra copy of every air waybill issued and the corresponding sales report is collected by PSA field personnel.

Data Items

The coasting cargo manifest contains information on port of origin, port of destination, area of occupancy, type of handling, description of commodity, weight, value, and freight charges.

On the other hand, the air waybill contains the station of destination of the commodity, station of origin of the commodity, actual gross weight, declared value, equivalent volume weight, rate basis, rate class, description of commodity, issuing office, PAL charges, freight forwarder charges, and total freight charges.

Only the actual gross weight, declared value, description of commodity, station of origin, station of destination, and total freight charges are included in the domestic trade statistics.

Commodity Classification

The commodity classification used in the compilation of data is the 1993 Philippine Standard Commodity Classification (PSCC) Revision 2, which is aligned with the United Nations 1985 Standard International Trade Classification (SITC) Revision 3.

The classification is presented in four levels of details, namely: section, division, group, and item. A unique numeric code identifies each commodity. The first digit of the numeric code identifies the **section**; the first two digits, the **division**; the first three digits, the **group**; and the five digits, the **item**.

Processing

Documents collected from the provincial sales offices, stations, and collection points of PPA are sorted by port or station and by month; recorded; bundled and numbered by type of document, by port or station and by month. After which, the documents undergo manual and machine processing to ensure that all documents are checked/verified as to completeness and accuracy of entries. Manual and machine processing done are the following:

- 1. Transcription/coding of entries**
This is done by transcribing the data items from the coasting manifest to processing sheet (PS) to facilitate data entry;
- 2. Verification of entries from source documents to PS**
This is done to check if all applicable data items from the source documents are transcribed completely and accurately to the PS;
- 3. Data encoding**
This is done by encoding all the data from the PS for coastwise and passenger documents. On the other hand, entries from the air waybills are directly encoded using the Domestic Trade Data Processing System (DT-DPS) Version 1.1; and
- 4. Validation of data**
This is to check if the derived price (value/quantity) for each commodity is appropriate for the region/province.

Geographic Classification

In this publication, domestic trade statistics are classified by geographic area using the Philippine Standard Geographic Code (PSGC) as of 30 September 2019.

Other Available Data

There are other unpublished statistical tables available at the Trade Statistics Division of the Economic Sector Statistics Service. These can be requested through a letter addressed to the National Statistician and Civil Registrar General, PSA Complex, East Avenue, Diliman, Quezon City.

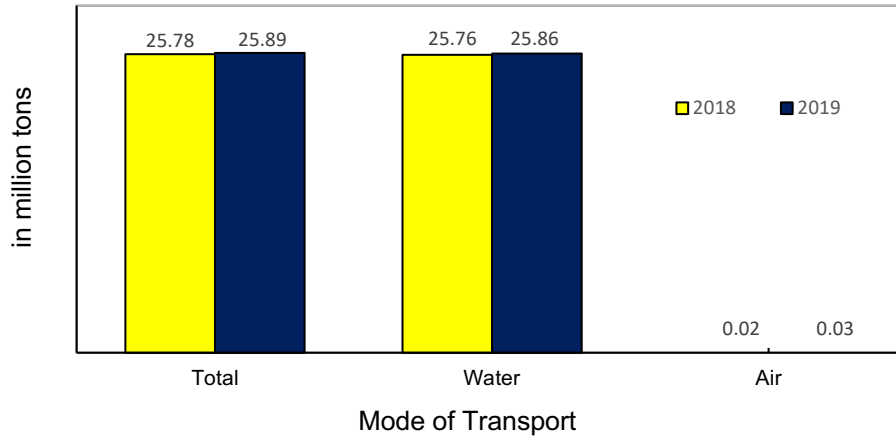
HIGHLIGHTS

2019 Commodity Flow in the Philippines

1. Quantity of domestic trade inches up

The total quantity of domestic trade in 2019 was posted at 25.89 million tons. This represents a slight increase of 0.4 percent from the 25.78 million tons volume of domestic trade recorded a year ago. By mode of transport, almost all (99.9%) of the total quantity of commodities were traded through water (coastwise), while the remaining were through air. (Figure 1, and Table 1)

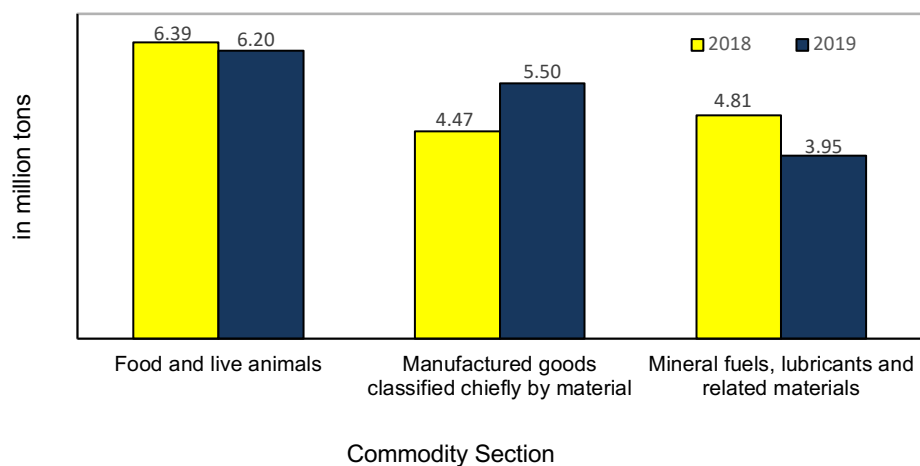
Figure 1. Quantity of Domestic Trade by Mode of Transport
2019 and 2018



Source: Philippine Statistics Authority

By commodity section, food and live animals topped in terms of quantity of domestic trade with 6.20 million tons or a share of 24.0 percent to total. It was followed by manufactured goods classified chiefly by material; and mineral fuels, lubricants and related materials, with 5.50 million tons (21.2%), and 3.95 million tons (15.2%), respectively. (Figure 2, and Table 1)

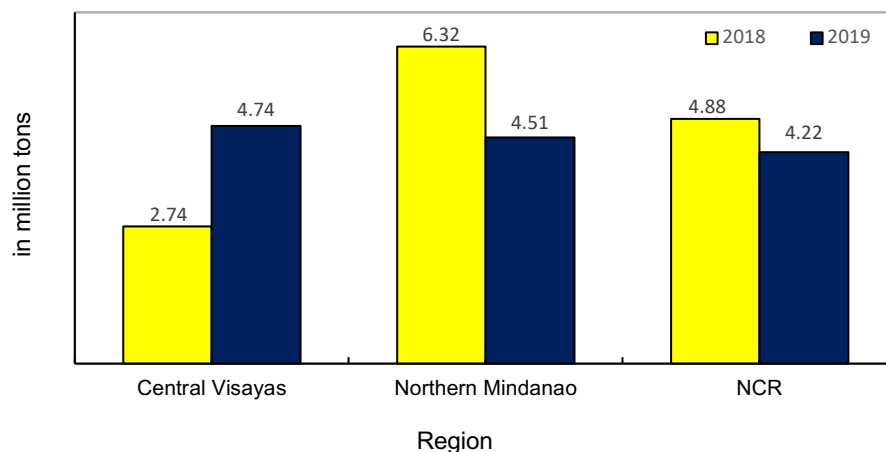
Figure 2. Quantity of Top Three Commodity Sections 2019 and 2018



Source: Philippine Statistics Authority

By region, Central Visayas registered the highest quantity of traded commodities of 4.74 million tons or 18.3 percent of the total quantity in 2019. Northern Mindanao ranked second with a quantity of 4.51 million tons (17.4%) and the National Capital Region (NCR) placed third with 4.22 million tons (16.3%). (Figure 3, and Table 2)

Figure 3. Quantity of Domestic Trade of Top Three Regions 2019 and 2018



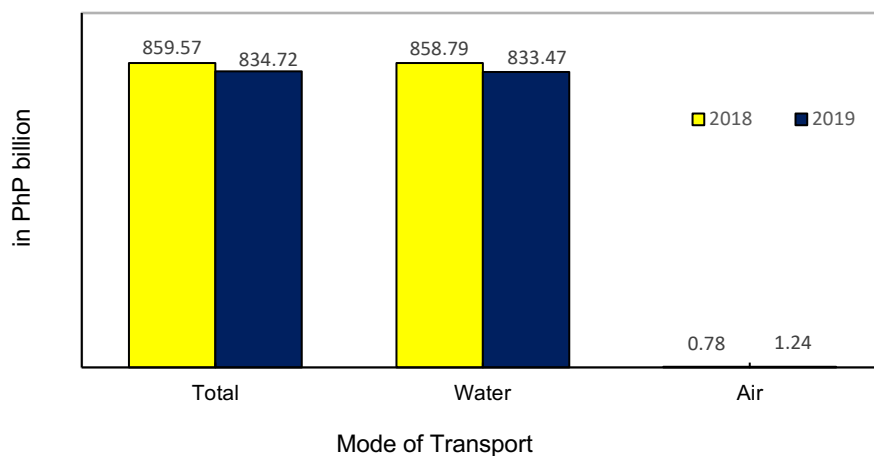
Source: Philippine Statistics Authority

2. Value of domestic trade declines

Domestic trade value is the outflow value which refers to the value of commodities that goes out from a specified region/province to another region/province.

In 2019, the total value of domestic trade was estimated at PhP 834.72 billion, a contraction of 2.9 percent from the PhP 859.57 billion value of domestic trade recorded a year ago. (Figure 4, and Table 1)

Figure 4. Value of Domestic Trade by Mode of Transport
2019 and 2018

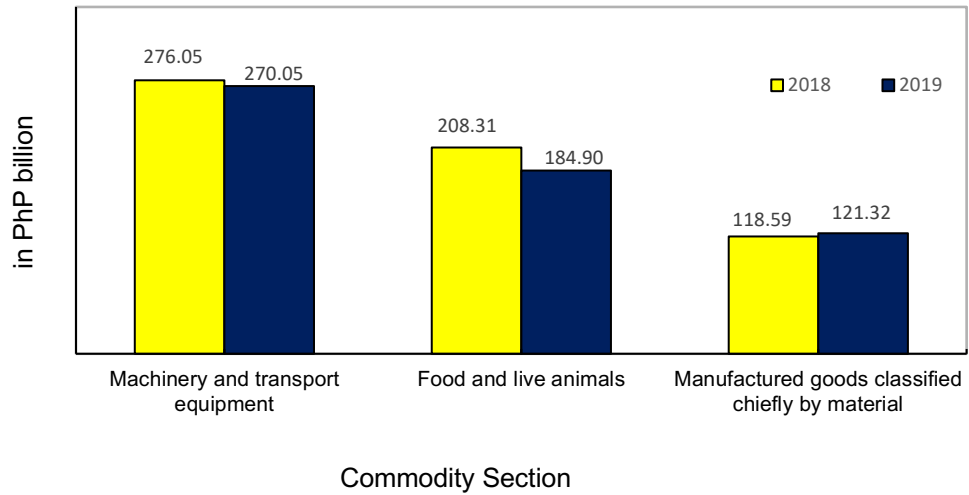


Source: Philippine Statistics Authority

By mode of transport, the total value of traded commodities through water accounted for 99.9 percent of the total commodities that flow in the country. The remaining 0.1 percent of the total commodities were traded through air transport.

Machinery and transport equipment led in terms of value of traded commodities with PhP 270.05 billion or 32.4 percent share to the total. It was followed by food and live animals; and manufactured goods classified chiefly by material, with corresponding values of PhP 184.90 billion (22.2%) and PhP 121.32 billion (14.5%). (Figure 5, and Table 1)

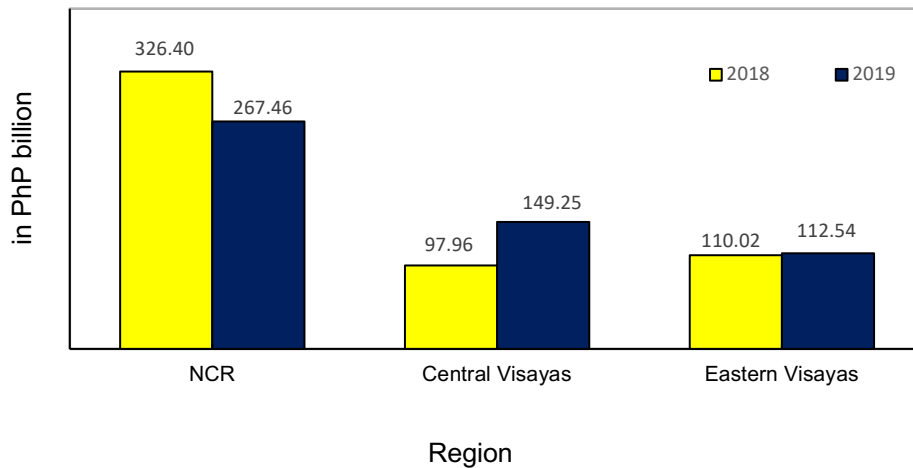
Figure 5. Value of Top 3 Commodity Sections: 2019 and 2018



Source: Philippine Statistics Authority

Among the regions, the National Capital Region (NCR) topped with a value of PhP 267.46 billion or 32.0 percent share to total value of domestic trade in 2019. It was followed by Central Visayas with a value of PhP 149.25 billion (17.9%), and Eastern Visayas with PhP 112.54 billion (13.5%). (Figure 6, and Table 2)

Figure 6. Value of Domestic Trade of Top Three Regions 2019 and 2018



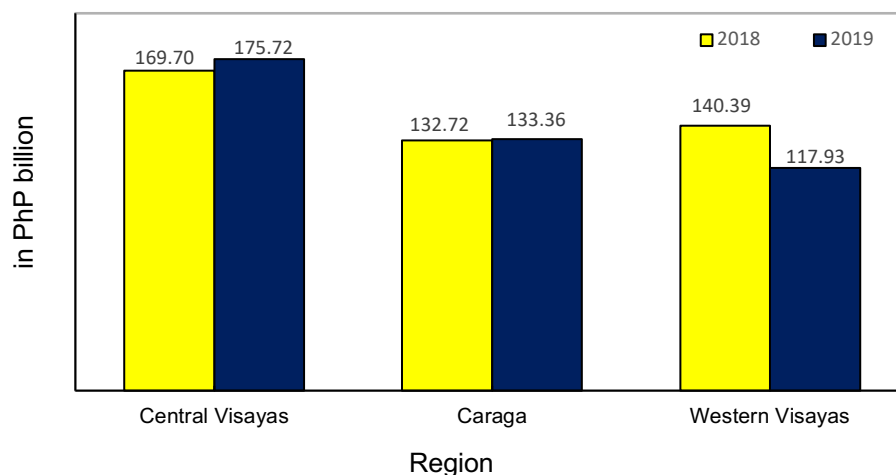
Source: Philippine Statistics Authority

3. Central Visayas leads in terms of inflow value

Inflow refers to the total value of commodities that come into the specified region/ province from other regions/provinces.

By region, Central Visayas posted the highest inflow value of PhP 175.72 billion or 21.1 percent share of the total inflow value of domestic trade in 2019. It was followed by Caraga and Western Visayas with inflow values of PhP 133.36 billion (16.0%) and PhP 117.93 billion (14.1%), respectively. Cagayan Valley, on the other hand, had the lowest inflow value of PhP 0.02 billion. (Figure 7, and Table 3)

Figure 7. Inflow Value of Top Three Regions: 2019 and 2018



Source: Philippine Statistics Authority

4. NCR registers the highest trade balance

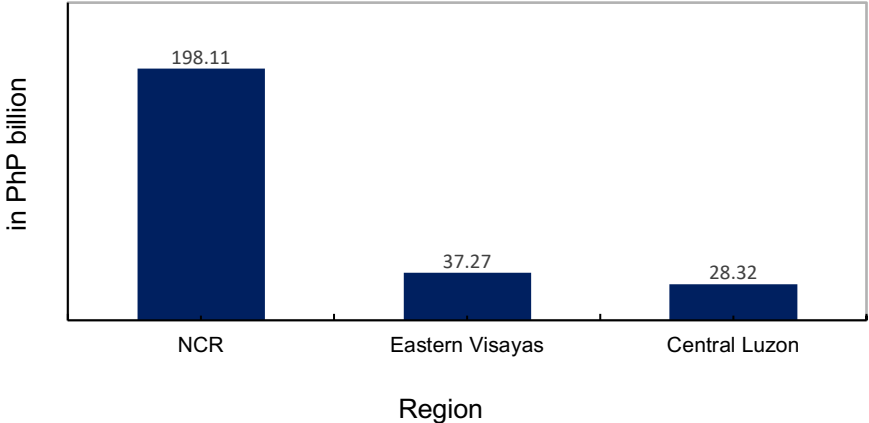
Trade balance is the difference between the outflow value and inflow value; that is, outflow minus inflow.

The top three regions with favorable (positive) trade balances in 2019 were the following:

- NCR, PhP 198.11 billion;
- Eastern Visayas, PhP 37.27 billion; and
- Central Luzon, PhP 28.32 billion.

Caraga, on the other hand, had the highest unfavorable (negative) trade balance value of PhP 110.04 billion. (Figure 8, and Table 3)

Figure 8. Trade Balances of Top Three Regions: 2019

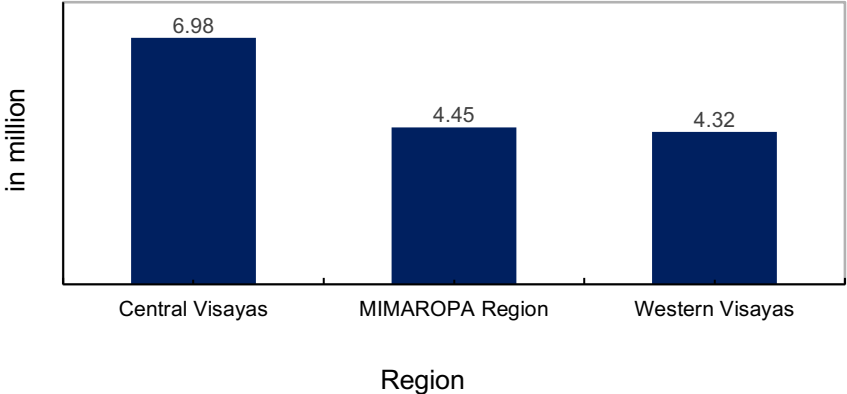


Source: Philippine Statistics Authority

5. Total number of passengers down by 28.3 percent

A total of 28.13 million passengers were transported via coastwise in 2019, a decrease of 28.3 percent from the 39.25 million passengers recorded a year ago. Central Visayas had the highest number of passengers of 6.98 million. MIMAROPA Region placed second with 4.45 million passengers and Western Visayas came third with 4.32 million passengers. (Figure 9 and Table 13)

Figure 9. Number of Passengers of Top Three Regions: 2019



Source: Philippine Statistics Authority

STATISTICAL TABLES

Table 1. Quantity and Value of Domestic Trade by Mode of Transport and Commodity Section: 2019 and 2018
(Quantity in tons. Value in thousand pesos. Details may not add up to total due to rounding.)

Mode of Transport and Commodity Section	2019		2018		Growth Rate (in percent)	
	Quantity	Value	Quantity	Value	Quantity	Value
	(1)	(2)	(3)	(4)	(5)	(6)
Philippines	25,890,077	834,717,767	25,780,204	859,570,495	0.4	-2.9
0 Food and live animals	6,201,423	184,900,654	6,387,545	208,313,631	-2.9	-11.2
1 Beverages and tobacco	595,517	38,785,570	756,732	43,463,077	-21.3	-10.8
2 Crude materials, inedible, except fuels	1,496,565	14,453,793	3,048,717	15,865,995	-50.9	-8.9
3 Mineral fuels, lubricants and related materials	3,948,217	50,995,994	4,807,911	60,797,338	-17.9	-16.1
4 Animal and vegetable oils, fats and waxes	127,953	5,554,006	79,191	4,583,816	61.6	21.2
5 Chemical and related products, not elsewhere classified	1,641,111	57,780,471	1,313,746	58,259,196	24.9	-0.8
6 Manufactured goods classified chiefly by material	5,495,740	121,316,233	4,470,699	118,585,986	22.9	2.3
7 Machinery and transport equipment	2,532,841	270,045,474	2,519,064	276,045,988	0.5	-2.2
8 Miscellaneous manufactured articles	946,379	42,392,455	1,292,737	55,114,123	-26.8	-23.1
9 Commodities and transactions not elsewhere classified in the PSCC	2,904,331	48,493,117	1,103,862	18,541,345	163.1	161.5
Water	25,859,005	833,474,631	25,760,451	858,792,200	0.4	-2.9
0 Food and live animals	6,176,703	183,901,217	6,373,267	207,703,955	-3.1	-11.5
1 Beverages and tobacco	595,498	38,784,771	756,717	43,462,323	-21.3	-10.8
2 Crude materials, inedible, except fuels	1,496,367	14,450,151	3,048,412	15,860,974	-50.9	-8.9
3 Mineral fuels, lubricants and related materials	3,948,213	50,995,821	4,807,909	60,797,253	-17.9	-16.1
4 Animal and vegetable oils, fats and waxes	127,952	5,553,942	79,190	4,583,789	61.6	21.2
5 Chemical and related products, not elsewhere classified	1,640,789	57,760,027	1,313,524	58,248,481	24.9	-0.8
6 Manufactured goods classified chiefly by material	5,495,413	121,305,555	4,470,427	118,574,592	22.9	2.3
7 Machinery and transport equipment	2,532,143	269,962,929	2,518,518	275,998,833	0.5	-2.2
8 Miscellaneous manufactured articles	945,419	42,345,687	1,291,927	55,079,203	-26.8	-23.1
9 Commodities and transactions not elsewhere classified in the PSCC	2,900,508	48,414,531	1,100,559	18,482,797	163.5	161.9
Air	31,072	1,243,136	19,754	778,295	57.3	59.7
0 Food and live animals	24,720	999,437	14,278	609,676	73.1	63.9
1 Beverages and tobacco	19	799	15	754	26.7	6.0
2 Crude materials, inedible, except fuels	198	3,642	305	5,021	-35.1	-27.5
3 Mineral fuels, lubricants and related materials	4	173	2	85	100.0	103.5
4 Animal and vegetable oils, fats and waxes	1	64	1	27	0.0	137.0
5 Chemical and related products, not elsewhere classified	322	20,444	222	10,715	45.0	90.8
6 Manufactured goods classified chiefly by material	327	10,678	272	11,394	20.2	-6.3
7 Machinery and transport equipment	698	82,545	546	47,155	27.8	75.1
8 Miscellaneous manufactured articles	960	46,768	810	34,920	18.5	33.9
9 Commodities and transactions not elsewhere classified in the PSCC	3,823	78,586	3,303	58,548	15.7	34.2

Source: Philippine Statistics Authority

Table 2. Quantity and Value of Domestic Trade by Mode of Transport and Region: 2019 and 2018
(Quantity in tons. Value in thousand pesos. Details may not add up to total due to rounding.)

Mode of Transport and Region	2019		2018		Growth Rate (in percent)	
	Quantity	Value	Quantity	Value	Quantity	Value
	(1)	(2)	(3)	(4)	(5)	(6)
Philippines	25,890,077	834,717,767	25,780,204	859,570,495	0.4	-2.9
N C R	4,218,017	267,463,381	4,882,835	326,398,978	-13.6	-18.1
C A R	-	-	-	-	-	-
I - Ilocos Region	-	-	-	-	-	-
II - Cagayan Valley	-	-	-	-	-	-
III - Central Luzon	3,847,506	35,863,443	4,706,665	44,243,450	-18.3	-18.9
IVA - CALABARZON	4,581	130,510	136,480	435,258	-96.6	-70.0
MIMAROPA Region	876,761	13,765,285	598,117	3,182,395	46.6	332.5
V - Bicol Region	2,680,451	36,019,590	394,577	8,833,757	579.3	307.7
VI - Western Visayas	2,042,243	92,647,544	2,140,828	105,346,034	-4.6	-12.1
VII - Central Visayas	4,737,073	149,251,072	2,740,054	97,960,346	72.9	52.4
VIII - Eastern Visayas	1,283,944	112,535,154	1,331,539	110,015,008	-3.6	2.3
IX - Zamboanga Peninsula	213,079	12,185,211	255,512	14,073,394	-16.6	-13.4
X - Northern Mindanao	4,507,269	61,883,070	6,318,279	63,606,730	-28.7	-2.7
XI - Davao Region	417,530	15,318,080	763,284	29,056,028	-45.3	-47.3
XII - SOCCSKSARGEN	257,236	10,168,877	449,028	13,381,534	-42.7	-24.0
XIII - Caraga	678,220	23,321,545	860,216	36,263,421	-21.2	-35.7
BARMM	126,168	4,165,004	202,790	6,774,164	-37.8	-38.5
Water	25,859,005	833,474,631	25,760,451	858,792,200	0.4	-2.9
N C R	4,218,017	267,463,381	4,882,835	326,398,978	-13.6	-18.1
C A R	-	-	-	-	-	-
I - Ilocos Region	-	-	-	-	-	-
II - Cagayan Valley	-	-	-	-	-	-
III - Central Luzon	3,847,506	35,863,443	4,706,665	44,243,450	-18.3	-18.9
IVA - CALABARZON	4,581	130,510	136,480	435,258	-96.6	-70.0
MIMAROPA Region	873,271	13,703,908	595,390	3,130,018	46.7	337.8
V - Bicol Region	2,679,990	36,018,286	394,512	8,833,521	579.3	307.7
VI - Western Visayas	2,037,834	91,708,289	2,138,779	104,868,068	-4.7	-12.5
VII - Central Visayas	4,731,151	149,150,235	2,734,533	97,826,229	73.0	52.5
VIII - Eastern Visayas	1,283,915	112,535,073	1,331,454	110,014,843	-3.6	2.3
IX - Zamboanga Peninsula	212,547	12,168,021	255,436	14,070,930	-16.8	-13.5
X - Northern Mindanao	4,506,204	61,875,020	6,316,721	63,595,337	-28.7	-2.7
XI - Davao Region	405,760	15,234,093	758,510	29,018,480	-46.5	-47.5
XII - SOCCSKSARGEN	253,841	10,137,824	446,130	13,319,506	-43.1	-23.9
XIII - Caraga	678,220	23,321,545	860,216	36,263,421	-21.2	-35.7
BARMM	126,168	4,165,004	202,790	6,774,164	-37.8	-38.5
Air	31,072	1,243,136	19,754	778,295	57.3	59.7
N C R	-	-	-	-	-	-
C A R	-	-	-	-	-	-
I - Ilocos Region	-	-	-	-	-	-
II - Cagayan Valley	-	-	-	-	-	-
III - Central Luzon	-	-	-	-	-	-
IVA - CALABARZON	-	-	-	-	-	-
MIMAROPA Region	3,490	61,377	2,727	52,377	28.0	17.2
V - Bicol Region	461	1,304	65	236	609.2	452.5
VI - Western Visayas	4,409	939,255	2,049	477,966	115.2	96.5
VII - Central Visayas	5,922	100,837	5,521	134,117	7.3	-24.8
VIII - Eastern Visayas	29	81	85	165	-65.9	-50.9
IX - Zamboanga Peninsula	532	17,190	76	2,464	600.0	597.6
X - Northern Mindanao	1,065	8,050	1,558	11,393	-31.6	-29.3
XI - Davao Region	11,770	83,987	4,774	37,548	146.5	123.7
XII - SOCCSKSARGEN	3,395	31,053	2,898	62,028	17.1	-49.9
XIII - Caraga	-	-	-	-	-	-
BARMM	-	-	-	-	-	-

(-) means no transaction
Source: Philippine Statistics Authority

Table 3. Total Value of Domestic Trade Balances in the Philippines by Mode of Transport and Region: 2019 and 2018
(Value in thousand pesos. Details may not add up to total due to rounding.)

Mode of Transport and Region	2019			2018		
	Outflow	Inflow	Balance	Outflow	Inflow	Balance
	(1)	(2)	(3)	(4)	(5)	(6)
Philippines	834,717,767	834,717,767	0	859,570,494	859,570,494	0
N C R	267,463,381	69,350,979	198,112,402	326,398,978	91,761,529	234,637,449
C A R	-	-	-	-	10	-10
I - Ilocos Region	-	2,882,457	-2,882,457	-	3,058,098	-3,058,098
II - Cagayan Valley	-	22,532	-22,532	-	380,532	-380,532
III - Central Luzon	35,863,443	7,542,232	28,321,211	44,243,450	3,483,114	40,760,336
IVA - CALABARZON	130,510	22,116,035	-21,985,525	435,258	15,717,408	-15,282,150
MIMAROPA Region	13,765,285	24,794,710	-11,029,425	3,182,395	24,200,668	-21,018,273
V - Bicol Region	36,019,590	10,248,430	25,771,160	8,833,757	9,281,459	-447,702
VI - Western Visayas	92,647,544	117,932,662	-25,285,118	105,346,034	140,390,957	-35,044,923
VII - Central Visayas	149,251,072	175,724,449	-26,473,377	97,960,346	169,698,750	-71,738,404
VIII - Eastern Visayas	112,535,154	75,262,691	37,272,463	110,015,008	45,619,000	64,396,008
IX - Zamboanga Peninsula	12,185,211	39,034,365	-26,849,154	14,073,394	43,282,782	-29,209,388
X - Northern Mindanao	61,883,070	97,718,783	-35,835,713	63,606,730	105,353,333	-41,746,603
XI - Davao Region	15,318,080	38,594,842	-23,276,762	29,056,028	51,151,623	-22,095,595
XII - SOCCSKSARGEN	10,168,877	15,516,486	-5,347,609	13,381,534	20,566,365	-7,184,831
XIII - Caraga	23,321,545	133,359,337	-110,037,792	36,263,421	132,717,518	-96,454,097
BARMM	4,165,004	4,616,773	-451,769	6,774,164	2,907,350	3,866,814
Water	833,474,631	833,474,631	0	858,792,200	858,792,200	0
N C R	267,463,381	68,272,418	199,190,963	326,398,978	91,066,873	235,332,105
C A R	-	-	-	-	-	-
I - Ilocos Region	-	2,878,697	-2,878,697	-	3,055,276	-3,055,276
II - Cagayan Valley	-	22,528	-22,528	-	379,851	-379,851
III - Central Luzon	35,863,443	7,542,232	28,321,211	44,243,450	3,483,114	40,760,336
IVA - CALABARZON	130,510	22,116,035	-21,985,525	435,258	15,717,408	-15,282,150
MIMAROPA Region	13,703,908	24,787,081	-11,083,173	3,130,018	24,196,717	-21,066,699
V - Bicol Region	36,018,286	10,240,956	25,777,330	8,833,521	9,275,665	-442,144
VI - Western Visayas	91,708,289	117,918,957	-26,210,668	104,868,068	140,380,335	-35,512,267
VII - Central Visayas	149,150,235	175,704,010	-26,553,775	97,826,229	169,685,814	-71,859,585
VIII - Eastern Visayas	112,535,073	75,251,728	37,283,345	110,014,843	45,611,465	64,403,378
IX - Zamboanga Peninsula	12,168,021	39,027,404	-26,859,383	14,070,930	43,278,743	-29,207,813
X - Northern Mindanao	61,875,020	97,706,174	-35,831,154	63,595,337	105,344,642	-41,749,305
XI - Davao Region	15,234,093	38,581,457	-23,347,364	29,018,480	51,140,111	-22,121,631
XII - SOCCSKSARGEN	10,137,824	15,455,812	-5,317,988	13,319,506	20,556,686	-7,237,180
XIII - Caraga	23,321,545	133,352,940	-110,031,395	36,263,421	132,712,454	-96,449,033
BARMM	4,165,004	4,616,200	-451,196	6,774,164	2,907,049	3,867,115
Air	1,243,136	1,243,136	0	778,295	778,295	0
N C R	-	1,078,561	-1,078,561	-	694,656	-694,656
C A R	-	-	-	-	10	-10
I - Ilocos Region	-	3,760	-3,760	-	2,822	-2,822
II - Cagayan Valley	-	4	-4	-	681	-681
III - Central Luzon	-	-	-	-	-	-
IVA - CALABARZON	-	-	-	-	-	-
MIMAROPA Region	61,377	7,629	53,748	52,377	3,951	48,426
V - Bicol Region	1,304	7,474	-6,170	236	5,794	-5,558
VI - Western Visayas	939,255	13,705	925,550	477,966	10,622	467,344
VII - Central Visayas	100,837	20,439	80,398	134,117	12,936	121,181
VIII - Eastern Visayas	81	10,963	-10,882	165	7,535	-7,370
IX - Zamboanga Peninsula	17,190	6,961	10,229	2,464	4,039	-1,575
X - Northern Mindanao	8,050	12,609	-4,559	11,393	8,691	2,702
XI - Davao Region	83,987	13,385	70,602	37,548	11,512	26,036
XII - SOCCSKSARGEN	31,053	60,674	-29,621	62,028	9,679	52,349
XIII - Caraga	-	6,397	-6,397	-	5,064	-5,064
BARMM	-	573	-573	-	301	-301

(-) means no transaction

Source: Philippine Statistics Authority

Table 4. Quantity and Value of Domestic Trade by Commodity Section, Island Group of Origin and Destination, and Mode of Transport: 2019
(Quantity in tons. Value in thousand pesos. Details may not add up to total due to rounding)

Commodity Section, Origin and Destination	Total		Mode of Transport			
	Quantity	Value	Water		Air	
			Quantity	Value	Quantity	Value
(1)	(2)	(3)	(4)	(5)	(6)	
All Commodities	25,890,077	834,717,765	25,859,005	833,474,631	31,072	1,243,136
Luzon	11,627,317	353,242,156	11,623,366	353,179,528	3,952	62,629
Luzon	4,471,530	64,809,500	4,467,607	64,747,311	3,923	62,189
Visayas	5,058,078	175,567,746	5,058,062	175,567,362	16	384
Mindanao	2,097,709	112,864,910	2,097,697	112,864,855	12	55
Visayas	8,063,261	354,433,823	8,052,900	353,393,598	10,360	1,040,226
Luzon	1,268,886	44,241,875	1,260,245	43,335,727	8,641	906,148
Visayas	2,895,835	143,935,073	2,895,339	143,899,878	496	35,195
Mindanao	3,898,540	166,256,875	3,897,317	166,157,992	1,223	98,883
Mindanao	6,199,500	127,041,786	6,182,739	126,901,506	16,761	140,280
Luzon	1,801,963	27,906,000	1,785,807	27,776,909	16,156	129,091
Visayas	3,186,192	49,416,983	3,185,632	49,407,455	560	9,528
Mindanao	1,211,345	49,718,803	1,211,300	49,717,142	45	1,661
0 Food and live animals	6,201,423	184,900,654	6,176,703	183,901,217	24,720	999,437
Luzon	2,246,101	80,380,884	2,242,562	80,326,501	3,539	54,383
Luzon	1,002,262	16,734,752	998,731	16,680,571	3,531	54,181
Visayas	805,000	39,530,775	804,996	39,530,600	4	175
Mindanao	438,839	24,115,357	438,835	24,115,330	4	27
Visayas	1,809,758	69,310,524	1,803,503	68,456,242	6,256	854,282
Luzon	571,450	20,331,837	565,636	19,574,606	5,814	757,231
Visayas	789,825	36,570,851	789,735	36,552,641	90	18,210
Mindanao	448,483	12,407,836	448,131	12,328,995	352	78,841
Mindanao	2,145,565	35,209,248	2,130,637	35,118,475	14,926	90,773
Luzon	489,353	14,233,197	474,840	14,147,499	14,513	85,698
Visayas	1,403,353	17,991,082	1,402,953	17,986,272	400	4,810
Mindanao	252,859	2,984,969	252,845	2,984,703	14	266
1 Beverages and tobacco	595,517	38,785,570	595,498	38,784,771	19	799
Luzon	252,345	22,419,831	252,344	22,419,821	a/	11
Luzon	34,279	1,896,767	34,279	1,896,757	a/	10
Visayas	132,295	11,993,486	132,295	11,993,486	a/	b/
Mindanao	85,771	8,529,578	85,771	8,529,578	0	0
Visayas	265,521	13,543,537	265,507	13,542,821	15	716
Luzon	49,700	1,539,321	49,688	1,538,751	12	570
Visayas	143,789	8,919,933	143,788	8,919,892	1	41
Mindanao	72,032	3,084,283	72,031	3,084,178	1	105
Mindanao	77,652	2,822,201	77,647	2,822,129	4	72
Luzon	2,880	73,283	2,877	73,249	3	34
Visayas	50,429	1,691,306	50,428	1,691,269	1	37
Mindanao	24,343	1,057,612	24,343	1,057,611	a/	1
2 Crude Materials, inedible, except fuels	1,496,565	14,453,793	1,496,367	14,450,151	198	3,642
Luzon	301,685	3,189,168	301,620	3,188,872	65	297
Luzon	94,533	1,480,325	94,468	1,480,029	65	296
Visayas	183,403	1,035,356	183,403	1,035,355	a/	1
Mindanao	23,749	673,487	23,749	673,487	a/	b/
Visayas	385,920	4,483,195	385,836	4,481,225	84	1,970
Luzon	128,176	557,005	128,104	555,648	72	1,357
Visayas	129,801	1,594,696	129,795	1,594,395	6	301
Mindanao	127,943	2,331,494	127,938	2,331,182	5	312
Mindanao	808,962	6,781,427	808,911	6,780,054	51	1,375
Luzon	218,533	2,457,663	218,492	2,456,530	41	1,133
Visayas	324,283	2,453,213	324,274	2,452,988	9	225
Mindanao	266,146	1,870,551	266,145	1,870,537	1	14

Table 4. - Continued

Commodity Section, Origin and Destination	Total		Mode of Transport			
			Water		Air	
	Quantity (1)	Value (2)	Quantity (3)	Value (4)	Quantity (5)	Value (6)
3 Mineral fuels, lubricants and related materials	3,948,217	50,995,994	3,948,213	50,995,821	4	173
Luzon	3,630,293	35,745,612	3,630,293	35,745,612	a/	b/
Luzon	2,866,250	27,481,828	2,866,250	27,481,828	a/	b/
Visayas	327,787	3,744,189	327,787	3,744,189	0	0
Mindanao	436,256	4,519,595	436,256	4,519,595	0	0
Visayas	162,375	8,343,002	162,371	8,342,828	4	172
Luzon	19,210	1,091,424	19,208	1,091,325	2	99
Visayas	127,273	6,533,437	127,273	6,533,383	a/	54
Mindanao	15,892	718,141	15,890	718,121	2	20
Mindanao	155,549	6,907,380	155,550	6,907,380	0	0
Luzon	6,536	122,045	6,536	122,045	0	0
Visayas	85,619	4,142,619	85,619	4,142,619	0	0
Mindanao	63,394	2,642,716	63,394	2,642,716	0	0
4 Animal and vegetable oils, fats and waxes	127,953	5,554,006	127,952	5,553,942	1	64
Luzon	24,243	495,561	24,238	495,561	0	0
Luzon	14,957	67,926	14,957	67,926	0	0
Visayas	5,194	338,287	5,194	338,287	0	0
Mindanao	4,092	89,348	4,092	89,348	0	0
Visayas	35,222	1,417,894	35,220	1,417,835	1	58
Luzon	15,596	598,853	15,595	598,795	1	58
Visayas	8,303	585,045	8,303	585,045	0	0
Mindanao	11,323	233,996	11,323	233,995	a/	1
Mindanao	68,491	3,640,553	68,490	3,640,546	a/	6
Luzon	5,419	220,867	5,419	220,861	a/	6
Visayas	7,350	346,283	7,350	346,283	0	0
Mindanao	55,722	3,073,403	55,722	3,073,403	0	0
5 Chemicals and related products not elsewhere classified	1,641,111	57,780,471	1,640,789	57,760,027	322	20,444
Luzon	558,413	36,482,551	558,408	36,482,471	4	80
Luzon	150,724	2,529,755	150,722	2,529,686	2	69
Visayas	228,544	19,485,760	228,543	19,485,751	1	9
Mindanao	179,145	14,467,036	179,144	14,467,034	1	2
Visayas	309,775	17,913,899	309,487	17,894,943	287	18,957
Luzon	168,085	9,641,846	167,963	9,628,583	122	13,263
Visayas	80,969	5,454,949	80,904	5,452,600	65	2,349
Mindanao	60,721	2,817,104	60,620	2,813,759	101	3,345
Mindanao	772,926	3,384,021	772,894	3,382,613	31	1,407
Luzon	75,960	1,387,052	75,934	1,385,913	26	1,139
Visayas	690,949	1,791,530	690,946	1,791,298	3	232
Mindanao	6,017	205,439	6,014	205,402	3	37
6 Manufactured goods classified chiefly by material	5,495,740	121,316,233	5,495,413	121,305,555	327	10,678
Luzon	1,142,737	52,047,439	1,142,724	52,047,284	13	155
Luzon	138,389	4,867,419	138,381	4,867,284	8	135
Visayas	554,440	25,672,686	554,439	25,672,673	1	13
Mindanao	449,908	21,507,334	449,904	21,507,327	4	7
Visayas	2,798,151	48,420,261	2,797,854	48,410,334	297	9,927
Luzon	119,339	3,327,577	119,088	3,319,123	251	8,454
Visayas	987,411	26,992,184	987,403	26,991,803	8	381
Mindanao	1,691,401	18,100,500	1,691,363	18,099,408	38	1,092
Mindanao	1,554,853	20,848,534	1,554,835	20,847,937	17	596
Luzon	916,495	6,590,764	916,482	6,590,338	13	426
Visayas	381,301	9,691,122	381,298	9,691,013	3	109
Mindanao	257,057	4,566,648	257,056	4,566,586	1	62

Table 4. - Concluded

Commodity Section, Origin and Destination	Total		Mode of Transport			
			Water		Air	
	Quantity (1)	Value (2)	Quantity (3)	Value (4)	Quantity (5)	Value (6)
7 Machinery and transport equipment	2,532,841	270,045,474	2,532,143	269,962,929	698	82,545
Luzon	457,390	57,912,282	457,379	57,912,046	11	240
Luzon	69,370	6,108,425	69,359	6,108,196	11	229
Visayas	208,993	27,260,782	208,993	27,260,776	a/	6
Mindanao	179,027	24,543,075	179,027	24,543,074	a/	1
Visayas	1,662,598	169,884,301	1,662,010	169,809,945	589	74,357
Luzon	38,293	4,003,880	37,814	3,944,227	479	59,653
Visayas	426,704	47,737,190	426,661	47,728,646	43	8,544
Mindanao	1,197,601	118,143,231	1,197,535	118,137,072	66	6,159
Mindanao	412,855	42,248,886	412,757	42,240,938	98	7,948
Luzon	15,295	964,655	15,215	958,270	80	6,385
Visayas	140,800	9,019,065	140,788	9,018,066	12	999
Mindanao	256,760	32,265,166	256,754	32,264,602	6	564
8 Miscellaneous manufactured articles	946,379	42,392,455	945,419	42,345,687	960	46,768
Luzon	648,887	31,744,521	648,853	31,743,610	34	912
Luzon	62,806	2,462,787	62,781	2,462,014	25	773
Visayas	308,554	15,802,164	308,547	15,802,044	7	120
Mindanao	277,527	13,479,570	277,525	13,479,552	2	18
Visayas	279,484	10,122,359	278,781	10,085,801	704	36,558
Luzon	35,242	924,835	34,665	894,038	577	30,797
Visayas	83,913	4,172,345	83,857	4,169,691	56	2,654
Mindanao	160,329	5,025,179	160,258	5,022,072	71	3,107
Mindanao	18,010	525,576	17,789	516,276	221	9,298
Luzon	3,476	109,419	3,291	101,096	185	8,323
Visayas	10,172	275,643	10,143	274,944	29	699
Mindanao	4,362	140,514	4,355	140,237	7	277
9 Commodities and transaction not elsewhere classified in the PSCC	2,904,331	48,493,117	2,900,508	48,414,531	3,823	78,586
Luzon	2,365,226	32,824,356	2,364,941	32,817,752	285	6,604
Luzon	37,960	1,179,547	37,679	1,173,020	281	6,527
Visayas	2,303,870	30,704,263	2,303,867	30,704,201	3	62
Mindanao	23,396	940,546	23,395	940,531	1	15
Visayas	354,462	10,994,799	352,338	10,951,622	2,124	43,177
Luzon	123,798	2,225,263	122,487	2,190,631	1,311	34,632
Visayas	117,848	5,374,439	117,620	5,371,782	228	2,657
Mindanao	112,816	3,395,097	112,231	3,389,209	585	5,888
Mindanao	184,644	4,673,961	183,229	4,645,157	1,413	28,804
Luzon	68,019	1,747,056	66,722	1,721,107	1,297	25,949
Visayas	91,937	2,015,122	91,834	2,012,704	103	2,418
Mindanao	24,688	911,783	24,674	911,346	14	437

a/ Quantity less than 0.5 tons

b/ Value less than thousand pesos

Source: Philippine Statistics Authority

Table 5. Commodity Flow from the National Capital Region by Commodity Section, Region of Destination and Mode of Transport: 2019 and 2018
(Value in thousand pesos. Details may not add up to total due to rounding.)

Commodity Section and Region of Destination	2019			2018		
	Total Value	Mode of Transport		Total Value	Mode of Transport	
		Water	Air		Water	Air
Philippines	834,717,767	833,474,631	1,243,136	859,570,494	858,792,200	778,295
National Capital Region	206,399,475	267,463,381	-	326,398,978	326,398,978	-
N C R	27	-	-	-	-	-
C A R	760	-	-	-	-	-
I - Ilocos Region	-	-	-	-	-	-
II - Cagayan Valley	-	-	-	-	-	-
III - Central Luzon	-	430,499	-	-	-	-
IVA - CALABARZON	4,901,341	3,566,287	-	-	-	-
MIMAROPA Region	9,640,473	14,653,459	-	17,571,719	17,571,719	-
V - Bicol Region	96,199	-	-	21,350	21,350	-
VI - Western Visayas	51,070,332	55,412,036	-	67,737,615	67,737,615	-
VII - Central Visayas	58,368,468	75,052,333	-	87,938,978	87,938,978	-
VIII - Eastern Visayas	6,352,026	11,139,559	-	8,969,412	8,969,412	-
IX - Zamboanga Peninsula	10,600,132	15,772,886	-	17,820,998	17,820,998	-
X - Northern Mindanao	35,475,662	37,826,046	-	53,615,940	53,615,940	-
XI - Davao Region	16,730,865	33,243,130	-	46,691,210	46,691,210	-
XII - SOCCSKSARGEN	5,545,371	13,603,281	-	18,345,924	18,345,924	-
XIII - Caraga	7,617,820	6,763,866	-	7,685,832	7,685,832	-
BARMM	-	-	-	-	-	-
0 Food and Live Animals	184,900,654	183,901,217	999,437	208,313,631	207,703,955	609,676
National Capital Region	67,745,054	67,745,054	-	94,553,056	94,553,056	-
N C R	-	-	-	-	-	-
C A R	-	-	-	-	-	-
I - Ilocos Region	-	-	-	-	-	-
II - Cagayan Valley	-	-	-	-	-	-
III - Central Luzon	5,369	5,369	-	-	-	-
IVA - CALABARZON	3,566,287	3,566,287	-	-	-	-
MIMAROPA Region	1,339,742	1,339,742	-	4,666,657	4,666,657	-
V - Bicol Region	-	-	-	6,778	6,778	-
VI - Western Visayas	15,444,549	15,444,549	-	19,588,355	19,588,355	-
VII - Central Visayas	21,146,376	21,146,376	-	29,794,479	29,794,479	-
VIII - Eastern Visayas	2,267,373	2,267,373	-	1,901,482	1,901,482	-
IX - Zamboanga Peninsula	3,376,300	3,376,300	-	4,490,433	4,490,433	-
X - Northern Mindanao	10,618,420	10,618,420	-	18,480,830	18,480,830	-
XI - Davao Region	6,572,877	6,572,877	-	9,882,782	9,882,782	-
XII - SOCCSKSARGEN	2,390,904	2,390,904	-	4,523,242	4,523,242	-
XIII - Caraga	1,016,857	1,016,857	-	1,218,019	1,218,019	-
BARMM	-	-	-	-	-	-
1 Beverages and Tobacco	38,785,570	38,784,771	799	43,463,077	43,462,323	754
National Capital Region	22,087,528	22,087,528	-	24,575,049	24,575,049	-
N C R	-	-	-	-	-	-
C A R	-	-	-	-	-	-
I - Ilocos Region	-	-	-	-	-	-
II - Cagayan Valley	-	-	-	-	-	-
III - Central Luzon	1,102	1,102	-	-	-	-
IVA - CALABARZON	-	-	-	-	-	-
MIMAROPA Region	1,577,884	1,577,884	-	1,403,440	1,403,440	-
V - Bicol Region	-	-	-	-	-	-
VI - Western Visayas	3,410,697	3,410,697	-	4,871,149	4,871,149	-
VII - Central Visayas	6,219,907	6,219,907	-	4,447,082	4,447,082	-
VIII - Eastern Visayas	2,362,881	2,362,881	-	2,241,249	2,241,249	-

Table 5. - Continued

Commodity Section and Region of Destination	2019			2018		
	Total Value	Mode of Transport		Total Value	Mode of Transport	
		Water	Air		Water	Air
IX - Zamboanga Peninsula	881,060	881,060	-	698,668	698,668	-
X - Northern Mindanao	3,311,670	3,311,670	-	3,899,943	3,899,943	-
XI - Davao Region	2,445,075	2,445,075	-	3,987,636	3,987,636	-
XII - SOCCSKSARGEN	862,757	862,757	-	1,826,288	1,826,288	-
XIII - Caraga	1,014,494	1,014,494	-	1,199,593	1,199,593	-
BARMM	-	-	-	-	-	-
2 Crude Materials, Inedible, Except Fuels	14,453,793	14,450,151	3,642	15,865,995	15,860,974	5,021
National Capital Region	1,332,819	1,332,819	-	1,654,604	1,654,604	-
N C R	-	-	-	-	-	-
C A R	-	-	-	-	-	-
I - Ilocos Region	-	-	-	-	-	-
II - Cagayan Valley	-	-	-	-	-	-
III - Central Luzon	6,480	6,480	-	-	-	-
IVA - CALABARZON	-	-	-	-	-	-
MIMAROPA Region	170,771	170,771	-	77,117	77,117	-
V - Bicol Region	-	-	-	-	-	-
VI - Western Visayas	194,600	194,600	-	429,624	429,624	-
VII - Central Visayas	332,274	332,274	-	369,076	369,076	-
VIII - Eastern Visayas	67,428	67,428	-	62,423	62,423	-
IX - Zamboanga Peninsula	148,864	148,864	-	135,758	135,758	-
X - Northern Mindanao	111,682	111,682	-	302,065	302,065	-
XI - Davao Region	224,119	224,119	-	181,653	181,653	-
XII - SOCCSKSARGEN	65,266	65,266	-	83,123	83,123	-
XIII - Caraga	11,335	11,335	-	13,764	13,764	-
BARMM	-	-	-	-	-	-
3 Mineral Fuels, Lubricants and Related Materials	50,995,994	50,995,821	173	60,797,338	60,797,253	85
National Capital Region	1,101,338	1,101,338	-	1,107,338	1,107,338	-
N C R	-	-	-	-	-	-
C A R	-	-	-	-	-	-
I - Ilocos Region	-	-	-	-	-	-
II - Cagayan Valley	-	-	-	-	-	-
III - Central Luzon	-	-	-	-	-	-
IVA - CALABARZON	-	-	-	-	-	-
MIMAROPA Region	99,555	99,555	-	78,110	78,110	-
V - Bicol Region	-	-	-	-	-	-
VI - Western Visayas	198,988	198,988	-	191,131	191,131	-
VII - Central Visayas	310,721	310,721	-	255,820	255,820	-
VIII - Eastern Visayas	53,698	53,698	-	56,666	56,666	-
IX - Zamboanga Peninsula	94,761	94,761	-	61,748	61,748	-
X - Northern Mindanao	158,645	158,645	-	216,061	216,061	-
XI - Davao Region	145,101	145,101	-	193,078	193,078	-
XII - SOCCSKSARGEN	25,104	25,104	-	50,582	50,582	-
XIII - Caraga	14,764	14,764	-	4,142	4,142	-
BARMM	-	-	-	-	-	-
4 Animal and Vegetable Oils, Fats and Waxes	5,554,006	5,553,942	64	4,583,816	4,583,789	27
National Capital Region	455,570	455,570	-	437,761	437,761	-
N C R	-	-	-	-	-	-
C A R	-	-	-	-	-	-
I - Ilocos Region	-	-	-	-	-	-
II - Cagayan Valley	-	-	-	-	-	-

Table 5. - Continued

Commodity Section and Region of Destination	2019			2018		
	Total Value	Mode of Transport		Total Value	Mode of Transport	
		Water	Air		Water	Air
III - Central Luzon	-	-	-	-	-	-
IVA - CALABARZON	-	-	-	-	-	-
MIMAROPA Region	30,065	30,065	-	31,350	31,350	-
V - Bicol Region	-	-	-	-	-	-
VI - Western Visayas	246,740	246,740	-	118,423	118,423	-
VII - Central Visayas	88,608	88,608	-	130,887	130,887	-
VIII - Eastern Visayas	2,940	2,940	-	5,031	5,031	-
IX - Zamboanga Peninsula	13,337	13,337	-	53,821	53,821	-
X - Northern Mindanao	12,176	12,176	-	46,117	46,117	-
XI - Davao Region	19,146	19,146	-	21,487	21,487	-
XII - SOCCSKSARGEN	40,553	40,553	-	28,645	28,645	-
XIII - Caraga	2,005	2,005	-	2,000	2,000	-
BARMM	-	-	-	-	-	-
5 Chemical and Related Products, not elsewhere classified	57,780,471	57,760,027	20,444	58,259,196	58,248,481	10,715
National Capital Region	35,190,607	35,190,607	-	39,696,556	39,696,556	-
N C R	-	-	-	-	-	-
C A R	-	-	-	-	-	-
I - Ilocos Region	-	-	-	-	-	-
II - Cagayan Valley	-	-	-	-	-	-
III - Central Luzon	12,561	12,561	-	-	-	-
IVA - CALABARZON	-	-	-	-	-	-
MIMAROPA Region	1,225,262	1,225,262	-	1,413,521	1,413,521	-
V - Bicol Region	-	-	-	6,837	6,837	-
VI - Western Visayas	8,760,644	8,760,644	-	9,871,142	9,871,142	-
VII - Central Visayas	10,066,712	10,066,712	-	10,464,658	10,464,658	-
VIII - Eastern Visayas	658,395	658,395	-	503,080	503,080	-
IX - Zamboanga Peninsula	1,773,190	1,773,190	-	1,949,426	1,949,426	-
X - Northern Mindanao	5,726,024	5,726,024	-	7,570,575	7,570,575	-
XI - Davao Region	3,896,213	3,896,213	-	4,255,100	4,255,100	-
XII - SOCCSKSARGEN	1,629,120	1,629,120	-	1,739,190	1,739,190	-
XIII - Caraga	1,442,486	1,442,486	-	1,923,027	1,923,027	-
BARMM	-	-	-	-	-	-
6 Manufactured Goods Classified Chiefly by Material	121,316,233	121,305,555	10,678	118,585,986	118,574,592	11,394
National Capital Region	49,525,980	49,525,980	-	60,031,916	60,031,916	-
N C R	-	-	-	-	-	-
C A R	-	-	-	-	-	-
I - Ilocos Region	-	-	-	-	-	-
II - Cagayan Valley	-	-	-	-	-	-
III - Central Luzon	8,100	8,100	-	-	-	-
IVA - CALABARZON	-	-	-	-	-	-
MIMAROPA Region	3,799,223	3,799,223	-	4,225,816	4,225,816	-
V - Bicol Region	-	-	-	5,816	5,816	-
VI - Western Visayas	9,195,678	9,195,678	-	11,829,642	11,829,642	-
VII - Central Visayas	13,318,546	13,318,546	-	14,787,517	14,787,517	-
VIII - Eastern Visayas	2,969,379	2,969,379	-	2,238,777	2,238,777	-
IX - Zamboanga Peninsula	3,551,842	3,551,842	-	3,650,336	3,650,336	-
X - Northern Mindanao	5,721,909	5,721,909	-	7,812,971	7,812,971	-
XI - Davao Region	7,540,011	7,540,011	-	10,913,772	10,913,772	-
XII - SOCCSKSARGEN	2,447,656	2,447,656	-	3,474,341	3,474,341	-
XIII - Caraga	973,636	973,636	-	1,092,928	1,092,928	-
BARMM	-	-	-	-	-	-

Table 5. - Concluded

Commodity Section and Region of Destination	2019			2018		
	Total Value	Mode of Transport		Total Value	Mode of Transport	
		Water	Air		Water	Air
7 Machinery and Transport Equipment	270,045,474	269,962,929	82,545	276,045,988	275,998,833	47,155
National Capital Region	55,964,984	55,964,984	-	64,049,332	64,049,332	-
N C R	-	-	-	-	-	-
C A R	-	-	-	-	-	-
I - Ilocos Region	-	-	-	-	-	-
II - Cagayan Valley	-	-	-	-	-	-
III - Central Luzon	396,327	396,327	-	-	-	-
IVA - CALABARZON	-	-	-	-	-	-
MIMAROPA Region	3,880,585	3,880,585	-	3,571,233	3,571,233	-
V - Bicol Region	-	-	-	1,919	1,919	-
VI - Western Visayas	11,543,526	11,543,526	-	13,137,972	13,137,972	-
VII - Central Visayas	13,786,983	13,786,983	-	16,734,568	16,734,568	-
VIII - Eastern Visayas	1,844,891	1,844,891	-	1,308,948	1,308,948	-
IX - Zamboanga Peninsula	3,058,394	3,058,394	-	3,469,632	3,469,632	-
X - Northern Mindanao	7,742,200	7,742,200	-	9,293,804	9,293,804	-
XI - Davao Region	7,691,092	7,691,092	-	10,547,671	10,547,671	-
XII - SOCCSKSARGEN	4,481,990	4,481,990	-	4,590,145	4,590,145	-
XIII - Caraga	1,538,998	1,538,998	-	1,393,440	1,393,440	-
BARMM	-	-	-	-	-	-
8 Miscellaneous Manufactured Articles	42,392,455	42,345,687	46,768	55,114,123	55,079,203	34,920
National Capital Region	31,579,355	31,579,355	-	37,912,836	37,912,836	-
N C R	-	-	-	-	-	-
C A R	-	-	-	-	-	-
I - Ilocos Region	-	-	-	-	-	-
II - Cagayan Valley	-	-	-	-	-	-
III - Central Luzon	560	560	-	-	-	-
IVA - CALABARZON	-	-	-	-	-	-
MIMAROPA Region	2,299,155	2,299,155	-	1,950,700	1,950,700	-
V - Bicol Region	-	-	-	-	0	-
VI - Western Visayas	5,925,768	5,925,768	-	7,250,479	7,250,479	-
VII - Central Visayas	9,007,216	9,007,216	-	10,223,776	10,223,776	-
VIII - Eastern Visayas	867,105	867,105	-	606,565	606,565	-
IX - Zamboanga Peninsula	2,731,194	2,731,194	-	3,083,334	3,083,334	-
X - Northern Mindanao	4,026,636	4,026,636	-	5,697,033	5,697,033	-
XI - Davao Region	4,402,147	4,402,147	-	6,405,588	6,405,588	-
XII - SOCCSKSARGEN	1,608,916	1,608,916	-	1,918,222	1,918,222	-
XIII - Caraga	710,658	710,658	-	777,139	777,139	-
BARMM	-	-	-	-	-	-
9 Commodities and Transactions not elsewhere classified in the PSCC	48,493,117	48,414,531	78,586	18,541,345	18,482,797	58,548
National Capital Region	2,480,149	2,480,149	-	2,380,528	2,380,528	-
N C R	-	-	-	-	-	-
C A R	-	-	-	-	-	-
I - Ilocos Region	-	-	-	-	-	-
II - Cagayan Valley	-	-	-	-	-	-
III - Central Luzon	-	-	-	-	-	-
IVA - CALABARZON	-	-	-	-	-	-
MIMAROPA Region	231,217	231,217	-	153,776	153,776	-
V - Bicol Region	-	-	-	-	-	-
VI - Western Visayas	490,846	490,846	-	449,696	449,696	-
VII - Central Visayas	774,990	774,990	-	731,114	731,114	-
VIII - Eastern Visayas	45,469	45,469	-	45,191	45,191	-
IX - Zamboanga Peninsula	143,944	143,944	-	227,842	227,842	-
X - Northern Mindanao	396,684	396,684	-	296,542	296,542	-
XI - Davao Region	307,349	307,349	-	302,442	302,442	-
XII - SOCCSKSARGEN	51,015	51,015	-	112,145	112,145	-
XIII - Caraga	38,633	38,633	-	61,780	61,780	-
BARMM	-	-	-	-	-	-

(-) means no transaction
Source: Philippine Statistics Authority

Table 6. Regional Commodity Flow in the Philippines by Region of Origin and Destination, and Mode of Transport: 2019 and 2018
(Value in thousand pesos. Details may not add up to total due to rounding.)

Region of Origin and Destination	2019			2018		
	Total Value	Mode of Transport		Total Value	Mode of Transport	
		Water	Air		Water	Air
Philippines (All Commodities)	834,717,767	833,474,631	1,243,136	859,570,495	858,792,200	778,295
National Capital Region	267,463,381	267,463,381	-	326,398,978	326,398,978	-
NCR	-	-	-	-	-	-
CAR	-	-	-	-	-	-
I - Ilocos Region	-	-	-	-	-	-
II - Cagayan Valley	-	-	-	-	-	-
III - Central Luzon	430,499	430,499	-	-	-	-
IVA - CALABARZON	-	-	-	10,833	10,833	-
MIMAROPA Region	18,219,745	18,219,745	-	17,560,886	17,560,886	-
V - Bicol Region	-	-	-	21,350	21,350	-
VI - Western Visayas	55,412,036	55,412,036	-	67,737,615	67,737,615	-
VII - Central Visayas	75,052,331	75,052,331	-	87,938,978	87,938,978	-
VIII - Eastern Visayas	11,139,560	11,139,560	-	8,969,412	8,969,412	-
IX - Zamboanga Peninsula	15,772,886	15,772,886	-	17,820,998	17,820,998	-
X - Northern Mindanao	37,826,047	37,826,047	-	53,615,940	53,615,940	-
XI - Davao Region	33,243,131	33,243,131	-	46,691,210	46,691,210	-
XII - SOCCSKSARGEN	13,603,279	13,603,279	-	18,345,924	18,345,924	-
XIII - Caraga	6,763,867	6,763,867	-	7,685,832	7,685,832	-
BARMM	-	-	-	-	-	-
Cordillera Administrative Region	-	-	-	-	-	-
NCR	-	-	-	-	-	-
CAR	-	-	-	-	-	-
I - Ilocos Region	-	-	-	-	-	-
II - Cagayan Valley	-	-	-	-	-	-
III - Central Luzon	-	-	-	-	-	-
IVA - CALABARZON	-	-	-	-	-	-
MIMAROPA Region	-	-	-	-	-	-
V - Bicol Region	-	-	-	-	-	-
VI - Western Visayas	-	-	-	-	-	-
VII - Central Visayas	-	-	-	-	-	-
VIII - Eastern Visayas	-	-	-	-	-	-
IX - Zamboanga Peninsula	-	-	-	-	-	-
X - Northern Mindanao	-	-	-	-	-	-
XI - Davao Region	-	-	-	-	-	-
XII - SOCCSKSARGEN	-	-	-	-	-	-
XIII - Caraga	-	-	-	-	-	-
BARMM	-	-	-	-	-	-
I Ilocos Region	-	-	-	-	-	-
NCR	-	-	-	-	-	-
CAR	-	-	-	-	-	-
I - Ilocos Region	-	-	-	-	-	-
II - Cagayan Valley	-	-	-	-	-	-
III - Central Luzon	-	-	-	-	-	-
IVA - CALABARZON	-	-	-	-	-	-
MIMAROPA Region	-	-	-	-	-	-
V - Bicol Region	-	-	-	-	-	-
VI - Western Visayas	-	-	-	-	-	-
VII - Central Visayas	-	-	-	-	-	-
VIII - Eastern Visayas	-	-	-	-	-	-
IX - Zamboanga Peninsula	-	-	-	-	-	-
X - Northern Mindanao	-	-	-	-	-	-
XI - Davao Region	-	-	-	-	-	-
XII - SOCCSKSARGEN	-	-	-	-	-	-
XIII - Caraga	-	-	-	-	-	-
BARMM	-	-	-	-	-	-

Table 6. - Continued

Region of Origin and Destination	2019			2018		
	Total Value	Mode of Transport		Total Value	Mode of Transport	
		Water	Air		Water	Air
II Cagayan Valley	-	-	-	-	-	-
NCR	-	-	-	-	-	-
CAR	-	-	-	-	-	-
I - Ilocos Region	-	-	-	-	-	-
II - Cagayan Valley	-	-	-	-	-	-
III - Central Luzon	-	-	-	-	-	-
IVA - CALABARZON	-	-	-	-	-	-
MIMAROPA Region	-	-	-	-	-	-
V - Bicol Region	-	-	-	-	-	-
VI - Western Visayas	-	-	-	-	-	-
VII - Central Visayas	-	-	-	-	-	-
VIII - Eastern Visayas	-	-	-	-	-	-
IX - Zamboanga Peninsula	-	-	-	-	-	-
X - Northern Mindanao	-	-	-	-	-	-
XI - Davao Region	-	-	-	-	-	-
XII - SOCCSKSARGEN	-	-	-	-	-	-
XIII - Caraga	-	-	-	-	-	-
BARMM	-	-	-	-	-	-
III Central Luzon	35,863,443	35,863,443	-	44,243,450	44,243,450	-
NCR	14,993,144	14,993,144	-	21,342,829	21,342,829	-
CAR	-	-	-	-	-	-
I - Ilocos Region	1,403,510	1,403,510	-	1,341,149	1,341,149	-
II - Cagayan Valley	-	-	-	7,600	7,600	-
III - Central Luzon	6,783,170	6,783,170	-	2,773,919	2,773,919	-
IVA - CALABARZON	3,566,287	3,566,287	-	4,694,428	4,694,428	-
MIMAROPA Region	1,199,610	1,199,610	-	1,660,261	1,660,261	-
V - Bicol Region	357,323	357,323	-	392,319	392,319	-
VI - Western Visayas	1,396,803	1,396,803	-	2,164,127	2,164,127	-
VII - Central Visayas	1,577,658	1,577,658	-	1,712,546	1,712,546	-
VIII - Eastern Visayas	444,187	444,187	-	743,886	743,886	-
IX - Zamboanga Peninsula	508,175	508,175	-	993,794	993,794	-
X - Northern Mindanao	1,744,608	1,744,608	-	3,274,135	3,274,135	-
XI - Davao Region	1,440,703	1,440,703	-	1,532,417	1,532,417	-
XII - SOCCSKSARGEN	96,166	96,166	-	1,081,667	1,081,667	-
XIII - Caraga	330,916	330,916	-	528,372	528,372	-
BARMM	-	21,185	-	-	-	-
IVA CALABARZON	130,510	130,510	-	435,258	435,258	-
NCR	-	-	-	12,620	12,620	-
CAR	-	-	-	-	-	-
I - Ilocos Region	-	-	-	-	-	-
II - Cagayan Valley	-	-	-	-	-	-
III - Central Luzon	-	-	-	-	-	-
IVA - CALABARZON	-	-	-	-	-	-
MIMAROPA Region	130,510	130,510	-	390,784	390,784	-
V - Bicol Region	-	-	-	-	-	-
VI - Western Visayas	-	-	-	2,663	2,663	-
VII - Central Visayas	-	-	-	7,078	7,078	-
VIII - Eastern Visayas	-	-	-	14,003	14,003	-
IX - Zamboanga Peninsula	-	-	-	1,560	1,560	-
X - Northern Mindanao	-	-	-	6,275	6,275	-
XI - Davao Region	-	-	-	-	-	-
XII - SOCCSKSARGEN	-	-	-	-	-	-
XIII - Caraga	-	-	-	277	277	-
BARMM	-	-	-	-	-	-

Table 6. - Continued

Region of Origin and Destination	2019			2018		
	Total Value	Mode of Transport		Total Value	Mode of Transport	
		Water	Air		Water	Air
MIMAROPA Region	13,765,285	13,703,908	61,377	3,182,395	3,130,018	52,377
NCR	1,503,580	1,442,203	61,377	775,746	723,631	52,115
CAR	-	-	-	-	-	-
I - Ilocos Region	1,800	1,800	-	10	-	10
II - Cagayan Valley	8,333	8,333	-	34,465	34,465	-
III - Central Luzon	-	-	-	-	-	-
IVA - CALABARZON	9,369,171	9,369,171	-	487,285	487,285	-
MIMAROPA Region	2,487,607	2,487,607	-	1,572,984	1,572,984	-
V - Bicol Region	-	-	-	-	-	-
VI - Western Visayas	80,583	80,583	-	81,780	81,780	-
VII - Central Visayas	132,797	132,797	-	46,226	45,983	243
VIII - Eastern Visayas	-	47	-	-	-	-
IX - Zamboanga Peninsula	-	-	-	-	-	-
X - Northern Mindanao	37,706	37,706	-	2	-	2
XI - Davao Region	-	-	-	2	-	2
XII - SOCCSKSARGEN	104,705	104,705	-	7	-	7
XIII - Caraga	38,958	38,958	-	183,890	183,890	-
BARMM	-	-	-	-	-	-
V Bicol Region	36,019,590	36,018,286	1,304	8,833,757	8,833,521	236
NCR	201,925	201,125	800	55,000	54,855	145
CAR	-	-	-	-	-	-
I - Ilocos Region	652	641	11	3	-	3
II - Cagayan Valley	-	-	-	-	-	-
III - Central Luzon	-	-	-	-	-	-
IVA - CALABARZON	10,521	10,521	-	134,240	134,240	-
MIMAROPA Region	53,738	53,708	30	137,095	137,091	4
V - Bicol Region	4,088,407	4,088,406	1	4,529,861	4,529,861	-
VI - Western Visayas	38,538	38,520	18	197,841	197,826	15
VII - Central Visayas	653,807	653,438	369	348,522	348,473	49
VIII - Eastern Visayas	29,639,408	29,639,404	4	2,644,240	2,644,240	-
IX - Zamboanga Peninsula	67,516	67,500	16	55,429	55,425	4
X - Northern Mindanao	1,232,374	1,232,360	14	715,841	715,840	1
XI - Davao Region	2,156	2,130	26	7	-	7
XII - SOCCSKSARGEN	13	-	13	15,533	15,525	8
XIII - Caraga	30,533	30,533	-	143	141	2
BARMM	-	-	1	-	-	-
VI Western Visayas	92,647,544	91,708,289	939,255	105,346,034	104,868,068	477,966
NCR	18,486,335	17,659,481	826,854	24,896,347	24,459,155	437,192
CAR	-	-	-	-	-	-
I - Ilocos Region	1,364,322	1,361,014	3,308	1,716,423	1,713,719	2,704
II - Cagayan Valley	-	-	-	338,465	337,787	678
III - Central Luzon	158,456	158,456	-	136,740	136,740	-
IVA - CALABARZON	7,881,068	7,881,068	-	8,709,644	8,709,644	-
MIMAROPA Region	1,701,559	1,696,568	4,991	2,159,120	2,156,433	2,687
V - Bicol Region	1,024,243	1,017,246	6,997	973,355	968,026	5,329
VI - Western Visayas	45,568,979	45,567,761	1,218	55,814,935	55,814,001	934
VII - Central Visayas	11,714,964	11,703,005	11,959	4,188,076	4,179,092	8,984
VIII - Eastern Visayas	191,766	183,920	7,846	902,771	897,302	5,469
IX - Zamboanga Peninsula	634,072	626,861	7,211	1,329,668	1,325,583	4,085
X - Northern Mindanao	2,916,679	2,909,364	7,315	3,019,763	3,018,560	1,203
XI - Davao Region	687,453	683,143	4,310	911,514	909,788	1,726
XII - SOCCSKSARGEN	312,553	255,878	56,675	227,358	222,199	5,159
XIII - Caraga	4,526	4,526	-	21,575	20,041	1,534
BARMM	570	-	570	283	-	283

Table 6. - Continued

Region of Origin and Destination	2019			2018		
	Total Value	Mode of Transport		Total Value	Mode of Transport	
		Water	Air		Water	Air
VII Central Visayas	149,251,069	149,150,235	100,837	97,960,346	97,826,229	134,117
NCR	9,237,899	9,176,994	60,905	5,791,423	5,694,907	96,516
CAR	-	-	-	-	-	-
I - Ilocos Region	5,357	5,347	10	420	408	12
II - Cagayan Valley	-	-	a/	1	-	1
III - Central Luzon	4,226	4,226	-	1,874	1,874	-
IVA - CALABARZON	47,086	47,086	-	150,311	150,311	-
MIMAROPA Region	24,135	21,602	2,533	22,808	21,573	1,235
V - Bicol Region	3,343,095	3,342,654	441	1,187,872	1,187,441	431
VI - Western Visayas	9,008,674	8,997,612	11,062	3,460,246	3,451,573	8,673
VII - Central Visayas	48,914,435	48,914,342	93	33,979,197	33,979,056	141
VIII - Eastern Visayas	24,094,429	24,091,422	3,007	14,049,788	14,047,765	2,023
IX - Zamboanga Peninsula	10,602,511	10,602,339	172	6,069,327	6,067,410	1,917
X - Northern Mindanao	29,733,582	29,727,282	6,300	23,202,423	23,196,952	5,471
XI - Davao Region	1,862,661	1,853,739	8,922	1,310,492	1,300,798	9,694
XII - SOCCSKSARGEN	796,225	792,239	3,986	383,972	379,467	4,505
XIII - Caraga	11,547,943	11,544,536	3,407	8,340,241	8,336,761	3,480
BARMM	28,815	28,814	1	9,951	9,933	18
VIII Eastern Visayas	112,535,154	112,535,073	81	110,015,008	110,014,843	165
NCR	833,311	833,236	75	1,028,782	1,028,621	161
CAR	-	-	-	-	-	-
I - Ilocos Region	1,230	1,230	-	-	-	-
II - Cagayan Valley	4,820	4,820	-	-	-	-
III - Central Luzon	23,076	23,076	-	141,648	141,648	-
IVA - CALABARZON	83,324	83,324	-	155,569	155,569	-
MIMAROPA Region	10,400	10,400	-	-	-	-
V - Bicol Region	7,900	7,900	-	53,742	53,742	-
VI - Western Visayas	17,439	17,439	a/	26,645	26,645	a/
VII - Central Visayas	4,075,240	4,075,235	5	5,072,531	5,072,528	3
VIII - Eastern Visayas	349,142	349,142	-	484,106	484,106	a/
IX - Zamboanga Peninsula	184,782	184,782	a/	371,720	371,720	-
X - Northern Mindanao	1,499,922	1,499,922	a/	2,567,855	2,567,855	-
XI - Davao Region	28,200	28,200	a/	45,005	45,005	-
XII - SOCCSKSARGEN	202,442	202,442	-	33,941	33,941	-
XIII - Caraga	105,213,924	105,213,924	-	100,033,460	100,033,460	-
BARMM	-	-	-	-	-	-
IX Zamboanga Peninsula	12,185,211	12,168,021	17,190	14,073,394	14,070,930	2,464
NCR	1,524,206	1,507,491	16,715	1,012,425	1,009,988	2,437
CAR	-	-	-	-	-	-
I - Ilocos Region	-	-	-	-	-	-
II - Cagayan Valley	-	-	-	-	-	-
III - Central Luzon	-	-	-	40	40	-
IVA - CALABARZON	-	-	-	-	-	-
MIMAROPA Region	5,245	5,244	1	5,601	5,601	-
V - Bicol Region	-	-	-	-	-	-
VI - Western Visayas	157,356	157,247	109	96,029	96,029	-
VII - Central Visayas	828,677	828,413	264	1,001,125	1,001,125	-
VIII - Eastern Visayas	6,075	6,075	-	33,876	33,876	-
IX - Zamboanga Peninsula	5,942,751	5,942,751	-	8,867,085	8,867,085	-
X - Northern Mindanao	2,400	2,400	-	31,215	31,215	-
XI - Davao Region	439,259	439,158	101	200,726	200,699	27
XII - SOCCSKSARGEN	172,287	172,287	-	122,339	122,339	-
XIII - Caraga	2,821	2,821	-	108,516	108,516	-
BARMM	3,104,134	3,104,134	-	2,594,416	2,594,416	-

Table 6. - Continued

Region of Origin and Destination	2019			2018		
	Total Value	Mode of Transport		Total Value	Mode of Transport	
		Water	Air		Water	Air
X Northern Mindanao	61,883,070	61,875,020	8,050	63,606,730	63,595,337	11,393
NCR	4,823,325	4,817,149	6,176	8,438,042	8,428,788	9,254
CAR	-	-	-	10	-	10
I - Ilocos Region	96,950	96,894	56	3	-	3
II - Cagayan Valley	-	-	-	-	-	-
III - Central Luzon	115,005	115,005	-	415,949	415,949	-
IVA - CALABARZON	1,155,059	1,155,059	-	536,529	536,529	-
MIMAROPA Region	541,336	541,334	2	1,485,907	1,485,907	-
V - Bicol Region	1,415,239	1,415,239	-	2,119,989	2,119,989	-
VI - Western Visayas	3,658,791	3,658,768	23	5,903,450	5,903,448	2
VII - Central Visayas	20,281,443	20,279,705	1,738	19,367,512	19,365,467	2,045
VIII - Eastern Visayas	2,768,275	2,768,246	29	3,338,193	3,338,176	17
IX - Zamboanga Peninsula	1,009,715	1,009,715	-	1,528,088	1,528,088	-
X - Northern Mindanao	22,405,685	22,405,684	1	18,556,175	18,556,171	4
XI - Davao Region	877,279	877,253	26	421,445	421,388	57
XII - SOCCSKSARGEN	226,515	226,515	-	153,685	153,684	1
XIII - Caraga	1,089,483	1,089,483	a/	1,039,053	1,039,053	-
BARMM	1,418,971	1,418,971	-	302,700	302,700	a/
XI Davao Region	15,318,080	15,234,093	83,987	29,056,028	29,018,480	37,548
NCR	5,587,047	5,510,863	76,184	15,163,895	15,127,034	36,861
CAR	-	-	-	-	-	-
I - Ilocos Region	367	-	367	28	-	28
II - Cagayan Valley	9,379	9,375	4	-	-	-
III - Central Luzon	-	-	-	-	-	-
IVA - CALABARZON	-	-	-	-	-	-
MIMAROPA Region	52	-	52	-	-	-
V - Bicol Region	30	-	30	3	-	3
VI - Western Visayas	2,281,318	2,280,944	374	4,144,870	4,144,854	16
VII - Central Visayas	5,787,761	5,782,369	5,392	8,204,461	8,203,835	626
VIII - Eastern Visayas	8,056	8,000	56	7,000	7,000	-
IX - Zamboanga Peninsula	1,643,655	1,642,542	1,113	1,520,011	1,520,002	9
X - Northern Mindanao	413	-	413	5	-	5
XI - Davao Region	-	-	-	15,755	15,755	-
XII - SOCCSKSARGEN	-	-	-	-	-	-
XIII - Caraga	-	-	-	-	-	-
BARMM	1	-	1	-	-	-
XII SOCCSKSARGEN	10,168,877	10,137,824	31,053	13,381,534	13,319,506	62,028
NCR	8,255,955	8,226,485	29,470	10,157,519	10,097,543	59,976
CAR	-	-	-	-	-	-
I - Ilocos Region	8	-	8	63	-	63
II - Cagayan Valley	-	-	-	2	-	2
III - Central Luzon	26,273	26,273	-	4,300	4,300	-
IVA - CALABARZON	3,520	3,520	-	21,303	21,303	-
MIMAROPA Region	21	-	21	26	-	26
V - Bicol Region	5	-	5	31	-	31
VI - Western Visayas	101,104	100,203	901	367,155	366,174	981
VII - Central Visayas	1,575,207	1,574,586	621	2,141,012	2,140,166	846
VIII - Eastern Visayas	21	-	21	27	-	27
IX - Zamboanga Peninsula	175,759	175,753	6	638,405	638,378	27
X - Northern Mindanao	6,000	6,000	a/	29,703	29,701	2
XI - Davao Region	14,001	14,001	-	21,940	21,940	-
XII - SOCCSKSARGEN	-	-	-	-	-	-
XIII - Caraga	11,003	11,003	-	48	-	48
BARMM	-	-	-	-	-	-

Table 6. - Concluded

Region of Origin and Destination	2019			2018		
	Total Value	Mode of Transport		Total Value	Mode of Transport	
		Water	Air		Water	Air
Caraga	23,321,545	23,321,545	-	36,263,421	36,263,421	-
NCR	3,445,635	3,445,635	-	2,130,149	2,130,149	-
CAR	-	-	-	-	-	-
I - Ilocos Region	8,262	8,262	-	-	-	-
II - Cagayan Valley	-	-	-	-	-	-
III - Central Luzon	1,526	1,526	-	8,643	8,643	-
IVA - CALABARZON	-	-	-	9,358	9,358	-
MIMAROPA Region	420,754	420,754	-	13,102	13,102	-
V - Bicol Region	12,188	12,188	-	2,943	2,943	-
VI - Western Visayas	130,618	130,618	-	179,009	179,009	-
VII - Central Visayas	3,900,043	3,900,043	-	4,090,960	4,090,960	-
VIII - Eastern Visayas	6,621,727	6,621,727	-	14,431,698	14,431,698	-
IX - Zamboanga Peninsula	98,222	98,222	-	86,400	86,400	-
X - Northern Mindanao	314,801	314,801	-	331,999	331,999	-
XI - Davao Region	-	-	-	1,111	1,111	-
XII - SOCCSKSARGEN	2,300	2,300	-	18,050	18,050	-
XIII - Caraga	8,322,374	8,322,374	-	14,959,999	14,959,999	-
BARMM	43,096	43,096	-	-	-	-
BARMM	4,165,004	4,165,004	-	6,774,164	6,774,164	-
NCR	458,613	458,613	-	956,753	956,753	-
CAR	-	-	-	-	-	-
I - Ilocos Region	-	-	-	-	-	-
II - Cagayan Valley	-	-	-	-	-	-
III - Central Luzon	-	-	-	-	-	-
IVA - CALABARZON	-	-	-	-	-	-
- MIMAROPA Region	-	-	-	-	-	-
V - Bicol Region	-	-	-	-	-	-
VI - Western Visayas	80,424	80,424	-	214,590	214,590	-
VII - Central Visayas	1,230,089	1,230,089	-	1,600,521	1,600,521	-
VIII - Eastern Visayas	-	-	-	-	-	-
IX - Zamboanga Peninsula	2,395,877	2,395,877	-	4,002,301	4,002,301	-
X - Northern Mindanao	-	-	-	-	-	-
XI - Davao Region	-	-	-	-	-	-
XII - SOCCSKSARGEN	-	-	-	-	-	-
XIII - Caraga	-	-	-	-	-	-
BARMM	-	-	-	-	-	-

(-) means no transaction

a/ Value less than thousand pesos

Source: Philippine Statistics Authority

Table 7. Quantity and Value of Domestic Trade Classified by Commodity Section and Mode of Transport: 2019
(Quantity in tons. Value in thousand pesos. Details may not add up to total due to rounding)

PSCC CODE	Commodity Section	Mode of Transport					
		Total		Water		Air	
		Quantity	Value	Quantity	Value	Quantity	Value
		(1)	(2)	(3)	(4)	(5)	(6)
	All Commodities	25,890,077	834,717,767	25,859,005	833,474,631	31,072	1,243,136
0	Food and live animals	6,201,423	184,900,654	6,176,703	183,901,217	24,720	999,437
1	Beverages and tobacco	595,517	38,785,570	595,498	38,784,771	19	799
2	Crude materials, inedible, except fuels	1,496,565	14,453,793	1,496,367	14,450,151	198	3,642
3	Mineral fuels, lubricants and related materials	3,948,217	50,995,994	3,948,213	50,995,821	4	173
4	Animal and vegetable oils, fats and waxes	127,953	5,554,006	127,952	5,553,942	1	64
5	Chemical and related products, not elsewhere classified	1,641,111	57,780,471	1,640,789	57,760,027	322	20,444
6	Manufactured goods classified chiefly by material	5,495,740	121,316,233	5,495,413	121,305,555	327	10,678
7	Machinery and transport equipment	2,532,841	270,045,474	2,532,143	269,962,929	698	82,545
8	Miscellaneous manufactured articles	946,379	42,392,455	945,419	42,345,687	960	46,768
9	Commodities and transactions not elsewhere classified in the PSCC	2,904,331	48,493,117	2,900,508	48,414,531	3,823	78,586

Source: Philippine Statistics Authority

Table 8. Regional Commodity Flow in the Philippines by Region of Origin and Destination, and Mode of Transport: 2019
(Value in thousand pesos. Details may not add up to total due to rounding.)

Region of Origin and Destination	2019		
	Total Value	Mode of Transport	
		Water	Air
Philippines (All Commodities)	834,717,767	833,474,631	1,243,136
National Capital Region	267,463,381	267,463,381	-
NCR	-	-	-
CAR	-	-	-
I - Ilocos Region	-	-	-
II - Cagayan Valley	-	-	-
III - Central Luzon	430,499	430,499	-
IVA - CALABARZON	-	-	-
MIMAROPA Region	18,219,745	18,219,745	-
V - Bicol Region	-	-	-
VI - Western Visayas	55,412,036	55,412,036	-
VII - Central Visayas	75,052,331	75,052,331	-
VIII - Eastern Visayas	11,139,560	11,139,560	-
IX - Zamboanga Peninsula	15,772,886	15,772,886	-
X - Northern Mindanao	37,826,047	37,826,047	-
XI - Davao Region	33,243,131	33,243,131	-
XII - SOCCSKSARGEN	13,603,279	13,603,279	-
XIII - Caraga	6,763,867	6,763,867	-
BARMM	-	-	-
Cordillera Administrative Region	-	-	-
NCR	-	-	-
CAR	-	-	-
I - Ilocos Region	-	-	-
II - Cagayan Valley	-	-	-
III - Central Luzon	-	-	-
IVA - CALABARZON	-	-	-
MIMAROPA Region	-	-	-
V - Bicol Region	-	-	-
VI - Western Visayas	-	-	-
VII - Central Visayas	-	-	-
VIII - Eastern Visayas	-	-	-
IX - Zamboanga Peninsula	-	-	-
X - Northern Mindanao	-	-	-
XI - Davao Region	-	-	-
XII - SOCCSKSARGEN	-	-	-
XIII - Caraga	-	-	-
BARMM	-	-	-
I Ilocos Region	-	-	-
NCR	-	-	-
CAR	-	-	-
I - Ilocos Region	-	-	-
II - Cagayan Valley	-	-	-
III - Central Luzon	-	-	-
IVA - CALABARZON	-	-	-
MIMAROPA Region	-	-	-
V - Bicol Region	-	-	-
VI - Western Visayas	-	-	-
VII - Central Visayas	-	-	-
VIII - Eastern Visayas	-	-	-
IX - Zamboanga Peninsula	-	-	-
X - Northern Mindanao	-	-	-
XI - Davao Region	-	-	-
XII - SOCCSKSARGEN	-	-	-
XIII - Caraga	-	-	-
BARMM	-	-	-

Table 8. - Continued

Region of Origin and Destination	2019		
	Total Value	Mode of Transport	
		Water	Air
II Cagayan Valley	-	-	-
NCR	-	-	-
CAR	-	-	-
I - Ilocos Region	-	-	-
II - Cagayan Valley	-	-	-
III - Central Luzon	-	-	-
IVA - CALABARZON	-	-	-
MIMAROPA Region	-	-	-
V - Bicol Region	-	-	-
VI - Western Visayas	-	-	-
VII - Central Visayas	-	-	-
VIII - Eastern Visayas	-	-	-
IX - Zamboanga Peninsula	-	-	-
X - Northern Mindanao	-	-	-
XI - Davao Region	-	-	-
XII - SOCCSKSARGEN	-	-	-
XIII - Caraga	-	-	-
BARMM	-	-	-
III Central Luzon	35,863,443	35,863,443	-
NCR	14,993,144	14,993,144	-
CAR	-	-	-
I - Ilocos Region	1,403,510	1,403,510	-
II - Cagayan Valley	-	-	-
III - Central Luzon	6,783,170	6,783,170	-
IVA - CALABARZON	3,566,287	3,566,287	-
MIMAROPA Region	1,199,610	1,199,610	-
V - Bicol Region	357,323	357,323	-
VI - Western Visayas	1,396,803	1,396,803	-
VII - Central Visayas	1,577,658	1,577,658	-
VIII - Eastern Visayas	444,187	444,187	-
IX - Zamboanga Peninsula	508,175	508,175	-
X - Northern Mindanao	1,744,608	1,744,608	-
XI - Davao Region	1,440,703	1,440,703	-
XII - SOCCSKSARGEN	96,166	96,166	-
XIII - Caraga	330,916	330,916	-
BARMM	-	21,185	-
IVA CALABARZON	130,510	130,510	-
NCR	-	-	-
CAR	-	-	-
I - Ilocos Region	-	-	-
II - Cagayan Valley	-	-	-
III - Central Luzon	-	-	-
IVA - CALABARZON	-	-	-
MIMAROPA Region	130,510	130,510	-
V - Bicol Region	-	-	-
VI - Western Visayas	-	-	-
VII - Central Visayas	-	-	-
VIII - Eastern Visayas	-	-	-
IX - Zamboanga Peninsula	-	-	-
X - Northern Mindanao	-	-	-
XI - Davao Region	-	-	-
XII - SOCCSKSARGEN	-	-	-
XIII - Caraga	-	-	-
BARMM	-	-	-

Table 8. - Continued

Region of Origin and Destination	2019		
	Total Value	Mode of Transport	
		Water	Air
MIMAROPA Region	13,765,285	13,703,908	61,377
NCR	1,503,580	1,442,203	61,377
CAR	-	-	-
I - Ilocos Region	1,800	1,800	-
II - Cagayan Valley	8,333	8,333	-
III - Central Luzon	-	-	-
IVA - CALABARZON	9,369,171	9,369,171	-
MIMAROPA Region	2,487,607	2,487,607	-
V - Bicol Region	-	-	-
VI - Western Visayas	80,583	80,583	-
VII - Central Visayas	132,797	132,797	-
VIII - Eastern Visayas	-	47	-
IX - Zamboanga Peninsula	-	-	-
X - Northern Mindanao	37,706	37,706	-
XI - Davao Region	-	-	-
XII - SOCCSKSARGEN	104,705	104,705	-
XIII - Caraga	38,958	38,958	-
BARMM	-	-	-
V Bicol Region	36,019,590	36,018,286	1,304
NCR	201,925	201,125	800
CAR	-	-	-
I - Ilocos Region	652	641	11
II - Cagayan Valley	-	-	-
III - Central Luzon	-	-	-
IVA - CALABARZON	10,521	10,521	-
MIMAROPA Region	53,738	53,708	30
V - Bicol Region	4,088,407	4,088,406	1
VI - Western Visayas	38,538	38,520	18
VII - Central Visayas	653,807	653,438	369
VIII - Eastern Visayas	29,639,408	29,639,404	4
IX - Zamboanga Peninsula	67,516	67,500	16
X - Northern Mindanao	1,232,374	1,232,360	14
XI - Davao Region	2,156	2,130	26
XII - SOCCSKSARGEN	13	-	13
XIII - Caraga	30,533	30,533	-
BARMM	-	-	1
VI Western Visayas	92,647,544	91,708,289	939,255
NCR	18,486,335	17,659,481	826,854
CAR	-	-	-
I - Ilocos Region	1,364,322	1,361,014	3,308
II - Cagayan Valley	-	-	-
III - Central Luzon	158,456	158,456	-
IVA - CALABARZON	7,881,068	7,881,068	-
MIMAROPA Region	1,701,559	1,696,568	4,991
V - Bicol Region	1,024,243	1,017,246	6,997
VI - Western Visayas	45,568,979	45,567,761	1,218
VII - Central Visayas	11,714,964	11,703,005	11,959
VIII - Eastern Visayas	191,766	183,920	7,846
IX - Zamboanga Peninsula	634,072	626,861	7,211
X - Northern Mindanao	2,916,679	2,909,364	7,315
XI - Davao Region	687,453	683,143	4,310
XII - SOCCSKSARGEN	312,553	255,878	56,675
XIII - Caraga	4,526	4,526	-
BARMM	570	-	570

Table 8. - Continued

Region of Origin and Destination	2019		
	Total Value	Mode of Transport	
		Water	Air
VII Central Visayas	149,251,069	149,150,235	100,837
NCR	9,237,899	9,176,994	60,905
CAR	-	-	-
I - Ilocos Region	5,357	5,347	10
II - Cagayan Valley	-	-	a/
III - Central Luzon	4,226	4,226	-
IVA - CALABARZON	47,086	47,086	-
MIMAROPA Region	24,135	21,602	2,533
V - Bicol Region	3,343,095	3,342,654	441
VI - Western Visayas	9,008,674	8,997,612	11,062
VII - Central Visayas	48,914,435	48,914,342	93
VIII - Eastern Visayas	24,094,429	24,091,422	3,007
IX - Zamboanga Peninsula	10,602,511	10,602,339	172
X - Northern Mindanao	29,733,582	29,727,282	6,300
XI - Davao Region	1,862,661	1,853,739	8,922
XII - SOCCSKSARGEN	796,225	792,239	3,986
XIII - Caraga	11,547,943	11,544,536	3,407
BARM	28,815	28,814	1
VIII Eastern Visayas	112,535,154	112,535,073	81
NCR	833,311	833,236	75
CAR	-	-	-
I - Ilocos Region	1,230	1,230	-
II - Cagayan Valley	4,820	4,820	-
III - Central Luzon	23,076	23,076	-
IVA - CALABARZON	83,324	83,324	-
MIMAROPA Region	10,400	10,400	-
V - Bicol Region	7,900	7,900	-
VI - Western Visayas	17,439	17,439	a/
VII - Central Visayas	4,075,240	4,075,235	5
VIII - Eastern Visayas	349,142	349,142	-
IX - Zamboanga Peninsula	184,782	184,782	a/
X - Northern Mindanao	1,499,922	1,499,922	a/
XI - Davao Region	28,200	28,200	a/
XII - SOCCSKSARGEN	202,442	202,442	-
XIII - Caraga	105,213,924	105,213,924	-
BARM	-	-	-
IX Zamboanga Peninsula	12,185,211	12,168,021	17,190
NCR	1,524,206	1,507,491	16,715
CAR	-	-	-
I - Ilocos Region	-	-	-
II - Cagayan Valley	-	-	-
III - Central Luzon	-	-	-
IVA - CALABARZON	-	-	-
MIMAROPA Region	5,245	5,244	1
V - Bicol Region	-	-	-
VI - Western Visayas	157,356	157,247	109
VII - Central Visayas	828,677	828,413	264
VIII - Eastern Visayas	6,075	6,075	-
IX - Zamboanga Peninsula	5,942,751	5,942,751	-
X - Northern Mindanao	2,400	2,400	-
XI - Davao Region	439,259	439,158	101
XII - SOCCSKSARGEN	172,287	172,287	-
XIII - Caraga	2,821	2,821	-
BARM	3,104,134	3,104,134	-

Table 8. - Continued

Region of Origin and Destination	2019		
	Total Value	Mode of Transport	
		Water	Air
X Northern Mindanao	61,883,070	61,875,020	8,050
NCR	4,823,325	4,817,149	6,176
CAR	-	-	-
I - Ilocos Region	96,950	96,894	56
II - Cagayan Valley	-	-	-
III - Central Luzon	115,005	115,005	-
IVA - CALABARZON	1,155,059	1,155,059	-
MIMAROPA Region	541,336	541,334	2
V - Bicol Region	1,415,239	1,415,239	-
VI - Western Visayas	3,658,791	3,658,768	23
VII - Central Visayas	20,281,443	20,279,705	1,738
VIII - Eastern Visayas	2,768,275	2,768,246	29
IX - Zamboanga Peninsula	1,009,715	1,009,715	-
X - Northern Mindanao	22,405,685	22,405,684	1
XI - Davao Region	877,279	877,253	26
XII - SOCCSKSARGEN	226,515	226,515	-
XIII - Caraga	1,089,483	1,089,483	a/
BARMM	1,418,971	1,418,971	-
XI Davao Region	15,318,080	15,234,093	83,987
NCR	5,587,047	5,510,863	76,184
CAR	-	-	-
I - Ilocos Region	367	-	367
II - Cagayan Valley	9,379	9,375	4
III - Central Luzon	-	-	-
IVA - CALABARZON	-	-	-
MIMAROPA Region	52	-	52
V - Bicol Region	30	-	30
VI - Western Visayas	2,281,318	2,280,944	374
VII - Central Visayas	5,787,761	5,782,369	5,392
VIII - Eastern Visayas	8,056	8,000	56
IX - Zamboanga Peninsula	1,643,655	1,642,542	1,113
X - Northern Mindanao	413	-	413
XI - Davao Region	-	-	-
XII - SOCCSKSARGEN	-	-	-
XIII - Caraga	-	-	-
BARMM	1	-	1
XII SOCCSKSARGEN	10,168,877	10,137,824	31,053
NCR	8,255,955	8,226,485	29,470
CAR	-	-	-
I - Ilocos Region	8	-	8
II - Cagayan Valley	-	-	-
III - Central Luzon	26,273	26,273	-
IVA - CALABARZON	3,520	3,520	-
MIMAROPA Region	21	-	21
V - Bicol Region	5	-	5
VI - Western Visayas	101,104	100,203	901
VII - Central Visayas	1,575,207	1,574,586	621
VIII - Eastern Visayas	21	-	21
IX - Zamboanga Peninsula	175,759	175,753	6
X - Northern Mindanao	6,000	6,000	a/
XI - Davao Region	14,001	14,001	-
XII - SOCCSKSARGEN	-	-	-
XIII - Caraga	11,003	11,003	-
BARMM	-	-	-

Table 8. - Concluded

Region of Origin and Destination	2019		
	Total Value	Mode of Transport	
		Water	Air
Caraga	23,321,545	23,321,545	-
NCR	3,445,635	3,445,635	-
CAR	-	-	-
I - Ilocos Region	8,262	8,262	-
II - Cagayan Valley	-	-	-
III - Central Luzon	1,526	1,526	-
IVA - CALABARZON	-	-	-
MIMAROPA Region	420,754	420,754	-
V - Bicol Region	12,188	12,188	-
VI - Western Visayas	130,618	130,618	-
VII - Central Visayas	3,900,043	3,900,043	-
VIII - Eastern Visayas	6,621,727	6,621,727	-
IX - Zamboanga Peninsula	98,222	98,222	-
X - Northern Mindanao	314,801	314,801	-
XI - Davao Region	-	-	-
XII - SOCCSKSARGEN	2,300	2,300	-
XIII - Caraga	8,322,374	8,322,374	-
BARMM	43,096	43,096	-
BARMM	4,165,004	4,165,004	-
NCR	458,613	458,613	-
CAR	-	-	-
I - Ilocos Region	-	-	-
II - Cagayan Valley	-	-	-
III - Central Luzon	-	-	-
IVA - CALABARZON	-	-	-
- MIMAROPA Region	-	-	-
V - Bicol Region	-	-	-
VI - Western Visayas	80,424	80,424	-
VII - Central Visayas	1,230,089	1,230,089	-
VIII - Eastern Visayas	-	-	-
IX - Zamboanga Peninsula	2,395,877	2,395,877	-
X - Northern Mindanao	-	-	-
XI - Davao Region	-	-	-
XII - SOCCSKSARGEN	-	-	-
XIII - Caraga	-	-	-
BARMM	-	-	-

(-) means no transaction

a/ Value less than thousand pesos

Source: Philippine Statistics Authority

Table 9. Quantity and Value of Coastwise Trade by Port of Origin: 2019
(Quantity in kilograms. Value in pesos.)

PORT CODE	Port of Origin	Quantity	Value
		(1)	(2)
All Ports		25,859,005,377	833,474,631,299
39150	Manila (First District) North Harbor	4,218,017,465	267,463,381,067
22110	Cebu City	4,457,420,408	116,020,951,140
64500	Other National Ports (Southern Leyte)	994,975,650	105,201,874,000
45910	BREDCO, Reclamation Area, Bacolod City	1,213,882,071	65,744,581,435
08910	Bataan Refining Company, Bario Lamao, Limay, Bataan	3,414,150,004	31,743,328,087
62750	Matnog Causeway, Matnog, Sorsogon	2,273,258,900	29,387,829,850
43110	Cagayan de Oro City	1,286,475,585	18,401,899,929
43725	Benoni Pier, Mahinog, Camiguin	86,338,440	16,697,908,000
24170	Sasa Government Wharf, Sasa, Davao City	304,637,546	13,193,174,452
61740	Larena, Siquijor	49,815,656	11,496,714,605
63150	Makar Wharf, General Santos City	253,840,559	10,137,823,631
61500	Other National Ports (Siquijor)	34,967,389	9,757,519,007
52530	Calapan, Oriental Mindoro	711,786,184	7,970,310,496
73195	Zamboanga City	171,440,976	7,966,571,631
35962	Petron, Tominobo, Iligan City	135,779,411	6,680,895,830
67500	Other National Ports (Surigao del Norte)	82,487,498	6,360,194,815
46130	Dumaguete City	130,653,880	5,717,126,096
67170	Surigao City	59,041,999	4,506,919,767
02555	Nasipit Government (R.C.) Wharf, Nasipit, Agusan del Norte	226,941,617	4,486,283,607
45900	Other Private Ports (Negros Occidental)	42,855,201	4,343,831,410
83310	Isabela Wharf, Isabela, Basilan	33,922,000	3,985,005,000
30135	Iloilo, Iloilo City	168,770,655	3,923,994,685
67330	Dapa, Surigao del Norte	47,922,501	3,509,012,082
35140	Iligan City	275,830,385	3,242,546,274
35930	Granex Export Incorporated, Kiwalan (Granex Port), Iligan City	57,958,572	3,217,474,047
53160	Puerto Princesa City	66,690,911	3,096,637,276
35935	Iligan Cement Corporation, Kiwalan, Iligan City	466,982,977	2,845,349,888
35963	Pillsbury Flour Milling Company Incorporated, Kiwalan, Iligan City	840,285,154	2,776,360,312
43930	Floro Cement Corporation, Lugait, Misamis Oriental	509,377,678	2,640,116,004
05180	Tabaco, Albay	88,232,201	2,632,293,777
19960	Pilipinas Shell Petroleum Corporation, Culasi, Roxas City	35,631,764	2,609,669,170
19520	Culasi, Roxas City	14,956,595	2,526,572,173
42160	Ozamis, Ozamis City	113,647,383	2,405,470,492
45958	Negros Navigation Incorporated, Bario Banago, Bacolod City	52,684,991	2,326,347,259
45500	Other National Ports (Negros Occidental)	30,279,000	2,211,188,000
07745	Lamitan, Basilan	25,374,000	2,173,600,000
30715	Dumangas, Guimaras, Iloilo	65,791,915	2,048,861,170
24980	TEFASCO, Ilang Tibungko, Davao City	101,122,000	2,040,918,248
12780	Tubigon Causeway / Pier, Tubigon, Bohol	11,528,865	1,991,327,020
38160	Polloc, Cotabato City	92,358,211	1,803,404,090
60515	Calbayog City	66,474,835	1,747,493,940
02900	Other Private Ports (Agusan del Norte)	95,312,882	1,686,536,144
45992	Total Bulk Corporation (TBC), Pulupandan, Negros Occidental	59,399,227	1,600,673,638
08900	Other Private Ports (Bataan)	165,530,062	1,572,535,595
08915	Bataan Storage Corporation, Lucamin, Mariveles, Bataan	155,439,775	1,479,431,469
41150	Masbate, Masbate	42,689,471	1,447,639,934
67700	Other Municipal Ports (Surigao del Norte)	17,131,119	1,372,908,000
12790	Ubay Causeway, Ubay, Bohol	10,104,102	1,316,801,527
48700	Other Municipal Ports (Northern Samar)	12,897,868	1,216,099,556
37175	Tacloban City	43,527,140	1,214,324,910
45979	Sto. Niño, Bacolod City	18,600,550	1,209,035,750
20185	Virac, Catanduanes	26,575,000	1,183,818,000
30967	Port Complex, Barangay Lobac, Iloilo City	67,651,930	1,171,005,220
12310	Tagbilaran City	14,995,371	1,168,400,616
08150	Mariveles, Bataan	112,385,929	1,068,147,737
30500	Other National Ports (Iloilo)	62,412,105	1,048,032,260
	Other Ports*	1,639,763,814	14,686,481,181

* - Other Ports below one billion pesos
Source: Philippine Statistics Authority

Table 10. Quantity and Value of Domestic Trade by Commodity Division and Mode of Transport: 2019
(Quantity in tons. Value in thousand pesos. Details may not add up to total due to rounding.)

PSCC CODE	Commodity Description	Total		Mode of Transport			
		Quantity	Value	Water		Air	
				Quantity	Value	Quantity	Value
	All Commodities	25,890,077	834,717,767	25,859,005	833,474,631	31,072	1,243,136
00	Live animals other than animals of division 03	107,617	3,427,172	106,883	3,022,544	734	404,628
01	Meat and meat preparations	161,063	12,818,453	159,456	12,801,423	1,607	17,030
02	Dairy products and birds' eggs	179,539	15,675,196	179,196	15,671,163	343	4,033
03	Fish (not marine mammals), crustaceans, molluscs, etc., and preparations thereof	189,866	14,131,072	178,501	13,648,823	11,365	482,249
04	Cereals and cereal preparations	2,735,291	48,818,257	2,735,219	48,815,770	72	2,487
05	Vegetables and fruit	658,939	13,759,486	649,349	13,714,047	9,590	45,439
06	Sugars, sugar preparations and honey	790,474	30,748,044	790,456	30,747,264	18	780
07	Coffee, tea, cocoa, spices, and manufactures, thereof	58,549	6,497,326	58,324	6,492,248	225	5,078
08	Feeding stuff for animals (not including unmilled cereals)	1,054,653	26,712,241	1,054,639	26,711,725	14	516
09	Miscellaneous edible products and preparations	265,432	12,313,406	264,680	12,276,210	752	37,196
11	Beverages	554,202	25,422,707	554,184	25,422,116	18	591
12	Tobacco and tobacco manufactures	41,315	13,362,863	41,314	13,362,656	1	207
21	Hides, skins, and furskins, raw	310	12,129	310	12,129	-	-
22	Oil seeds and oleaginous fruits	174,456	3,704,578	174,456	3,704,556	a/	22
23	Crude rubber (including synthetic and reclaimed)	17,290	452,554	17,290	452,550	a/	4
24	Cork and wood	94,301	1,831,371	94,300	1,831,362	1	9
25	Pulp and waste paper	8,188	151,804	8,188	151,803	a/	1
26	Textile fibers (other than wool tops and other combed wool) and their wastes (not manufactured into yarn or fabric)	11,346	454,951	11,327	453,822	19	1,129
27	Crude fertilizers, other than those of division 56, and crude minerals (excluding coal, petroleum and precious stones)	1,100,992	5,396,190	1,100,990	5,396,100	2	90
28	Metalliferous ores and metal scrap	56,421	1,136,522	56,421	1,136,512	a/	10
29	Crude animal and vegetable materials, not elsewhere specified	33,260	1,313,695	33,084	1,311,318	176	2,377
32	Coal, coke and briquette	18,578	392,827	18,578	392,825	a/	2
33	Petroleum, petroleum products and related materials	3,788,429	48,450,321	3,788,425	48,450,150	4	171
34	Gas, natural and manufactured	141,210	2,152,845	141,210	2,152,845	-	-
41	Animal oils and fats	573	18,849	573	18,842	a/	7
42	Fixed vegetable fats and oils, crude refined or fractionated	127,311	5,533,696	127,310	5,533,663	1	33
43	Animal or vegetable fats and oils, processed; waxes of animal or vegetable origin	69	1,462	69	1,437	a/	25
51	Organic chemicals	345,819	14,023,513	345,817	14,023,423	2	90
52	Inorganic chemicals	687,198	1,895,582	687,197	1,895,548	1	34
53	Dyeing, tanning and coloring materials	35,087	1,751,081	35,083	1,750,956	4	125
54	Medicinal and pharmaceutical products	77,889	17,063,122	77,652	17,044,676	237	18,446
55	Essential oils and resinoids and perfume materials; toilet, polishing and cleans	201,832	12,786,961	201,813	12,786,284	19	677
56	Fertilizers (other than those of group 272)	34,741	1,114,856	34,741	1,114,850	a/	6
57	Plastics in primary forms	58,749	2,003,976	58,701	2,003,317	48	659
58	Plastics in non-primary forms	65,580	3,149,173	65,573	3,148,877	7	296
59	Chemical materials and products, not elsewhere specified	134,215	3,992,208	134,212	3,992,097	3	111
61	Leather, leather manufactures, not elsewhere specified, and dressed furskins and dressed furskins	568	19,759	567	19,730	1	29
62	Rubber manufactures, not elsewhere specified	51,725	2,574,992	51,713	2,574,287	12	705
63	Cork, and wood manufactures (excluding furnitures)	393,913	12,846,963	393,892	12,846,715	21	248
64	Paper, paperboard, and articles of paper pulp, of paper or of paperboard	138,903	5,033,848	138,885	5,033,552	18	296
65	Textile yarn, fabrics, made-up articles, not elsewhere specified, and related products	622,698	3,546,503	622,652	3,544,741	46	1,762
66	Non-metallic mineral manufactures, not elsewhere specified	1,629,948	26,953,770	1,629,906	26,951,566	42	2,204
67	Iron and steel	1,956,006	38,779,645	1,955,956	38,779,128	50	517
68	Non-ferrous metals	46,950	2,128,130	46,945	2,127,998	5	132
69	Manufactures of metals, not elsewhere specified	655,030	29,432,625	654,897	29,427,838	133	4,787
71	Power generating machinery and equipment	7,780	416,669	7,773	416,193	7	476
72	Machinery specialized for particular industries	33,966	2,727,902	33,935	2,726,507	31	1,395
73	Metalworking machinery	8,714	382,598	8,712	382,491	2	107
74	General industrial machinery and equipment, not elsewhere specified, and machine parts, not elsewhere specified	25,672	1,641,664	25,611	1,637,642	61	4,022
75	Office machines and automatic data processing machines	18,219	1,007,546	18,099	974,151	120	33,395
76	Telecommunications and sound recording and reproducing apparatus and equipment	12,476	919,241	12,437	904,395	39	14,846

Table 10. - Concluded

PSCC CODE	Commodity Description	Total		Mode of Transport			
				Water		Air	
		Quantity	Value	Quantity	Value	Quantity	Value
77	Electrical machinery, apparatus and appliances, not elsewhere specified, and electrical parts thereof (including non-electrical counterparts, not elsewhere specified, of electrical household type equipment)	147,251	10,662,913	147,019	10,652,786	232	10,127
78	Road vehicles (including air-cushion vehicles)	2,208,160	249,068,540	2,207,955	249,050,401	205	18,139
79	Other transport equipment	70,602	3,218,400	70,601	3,218,363	1	37
81	Prefabricated buildings; sanitary, plumbing, heating and lighting fixtures and fittings, not elsewhere specified	17,541	771,080	17,466	768,889	75	2191
82	Furniture and parts thereof; bedding, mattresses, mattress supports, cushions, and similar stuffed furnishings	150,619	8,211,055	150,548	8,210,339	71	716
83	Travel goods, handbags and similar containers	42,900	1,568,464	42,892	1,567,886	8	578
84	Articles of apparel and clothing accessories	388,689	16,515,499	388,563	16,502,466	126	13,033
85	Footwear	47,286	2,688,758	47,281	2,688,398	5	360
87	Professional, scientific and controlling instruments and apparatus, not elsewhere specified	11,695	1,042,334	11,660	1,038,371	35	3,963
88	Photographic apparatus, equipment and supplies and optical goods, not elsewhere specified, watches and clocks	1,428	83,898	1,407	83,105	21	793
89	Miscellaneous manufactured articles, not elsewhere specified	286,222	11,511,367	285,603	11,486,233	619	25,134
91	Postal packages not classified according to kind	1,395	60,923	1,391	60,793	4	130
93	Special transactions and commodities not classified according to kind	194,339	6,955,391	192,403	6,916,209	1,936	39,182
96	Coin (other than gold coin), not being legal tender	8	295	8	245	a/	50
97	Gold, non-monetary (excluding gold ores and concentrates)	1,509	23,409	1,509	23,409	a/	b/
98	Cash	-	1	-	-	a/	1
99	Various commodities, not elsewhere specified	2,707,078	41,453,098	2,705,197	41,413,876	1,881	39,222

No rail transaction from January to December 2019

(-) means no transaction

a/ Quantity less than 0.5 tons

b/ Value less than thousand pesos

Source: Philippine Statistics Authority

Table 11. Quantity, Value and Freight Revenue of Air Trade by Regions of Origin and Destination: 2019
(Quantity in tons. Value and freight revenue in thousand pesos. Details may not add up to total due to rounding)

Region of Origin	TOTAL	Region of Destination							
		N C R	C A R	I	II	III	IVA	MIMAROPA Region	V
		(1)	(2)	(3)	(4)	(5)	(6)	(7)	(8)
PHILIPPINES									
Total Quantity	31,072	28,353	-	9	a/	-	-	336	19
Total Value	1,243,136	1,078,556	-	3,760	4	-	-	7,630	7,474
Total Freight Revenue	703,342	667,644	-	555	3	-	-	1,877	874
MIMAROPA Region									
Total Quantity	3,490	3,490	-	-	-	-	-	-	-
Total Value	61,377	61,377	-	-	-	-	-	-	-
Total Freight Revenue	73,263	73,263	-	-	-	-	-	-	-
V - Bicol Region									
Total Quantity	461	425	-	a/	-	-	-	6	a/
Total Value	1,304	800	-	11	-	-	-	30	1
Total Freight Revenue	11,588	10,071	-	12	-	-	-	190	9
VI - Western Visayas									
Total Quantity	4,409	4,285	-	3	-	-	-	5	7
Total Value	939,255	826,854	-	3,308	-	-	-	4,991	6,997
Total Freight Revenue	126,535	117,526	-	342	-	-	-	635	737
VII - Central Visayas									
Total Quantity	5,922	3,981	-	a/	-	-	-	322	11
Total Value	100,837	60,905	-	10	-	-	-	2,533	441
Total Freight Revenue	23,864	16,947	-	c/	-	-	-	900	70
VIII - Eastern Visayas									
Total Quantity	29	27	-	-	-	-	-	-	-
Total Value	81	75	-	-	-	-	-	-	-
Total Freight Revenue	1,030	981	-	-	-	-	-	-	-
IX - Zamboanga Peninsula									
Total Quantity	532	526	-	-	-	-	-	a/	-
Total Value	17,190	16,715	-	-	-	-	-	1	-
Total Freight Revenue	12,745	12,543	-	-	-	-	-	1	-
X - Northern Mindanao									
Total Quantity	1,065	921	-	a/	-	-	-	a/	-
Total Value	8,050	6,176	-	56	-	-	-	2	-
Total Freight Revenue	32,532	28,599	-	7	-	-	-	1	-
XI - Davao Region									
Total Quantity	11,770	11,400	-	6	a/	-	-	1	1
Total Value	83,985	76,184	-	367	4	-	-	52	30
Total Freight Revenue	325,512	314,115	-	186	3	-	-	82	56
XII - SOCCSKSARGEN									
Total Quantity	3,395	3,298	-	a/	-	-	-	2	a/
Total Value	31,053	29,470	-	8	-	-	-	21	5
Total Freight Revenue	96,273	93,599	-	8	-	-	-	68	2

Table 11. - Concluded

Region of Origin	Region of Destination								
	VI	VII	VIII	IX	X	XI	XII	XIII	BARMM
	(9)	(10)	(11)	(12)	(13)	(14)	(15)	(16)	(17)
PHILIPPINES									
Total Quantity	435	503	135	98	357	567	257	-	1
Total Value	13,705	20,441	10,963	10,056	15,911	13,385	60,674	-	573
Total Freight Revenue	4,331	15,155	1,819	2,428	2,640	3,179	2,755	-	97
MIMAROPA Region									
Total Quantity	-	-	-	-	-	-	-	-	-
Total Value	-	-	-	-	-	-	-	-	-
Total Freight Revenue	-	-	-	-	-	-	-	-	-
V - Bicol Region									
Total Quantity	4	14	a/	1	1	5	5	-	a/
Total Value	18	369	4	16	14	26	13	-	1
Total Freight Revenue	121	574	10	96	71	202	232	-	12
VI - Western Visayas									
Total Quantity	1	23	9	7	9	21	36	-	1
Total Value	1,218	11,959	7,846	7,211	7,315	4,310	56,675	-	570
Total Freight Revenue	145	1,290	942	977	910	1,101	1,848	-	82
VII - Central Visayas									
Total Quantity	341	2	117	57	339	537	216	-	a/
Total Value	11,062	93	3,007	1,710	8,168	8,922	3,986	-	1
Total Freight Revenue	1,362	13	537	264	1,355	1,741	675	-	c/
VIII - Eastern Visayas									
Total Quantity	a/	2	-	a/	-	a/	-	-	-
Total Value	b/	5	-	b/	-	b/	-	-	-
Total Freight Revenue	10	37	-	1	-	1	-	-	-
IX - Zamboanga Peninsula									
Total Quantity	a/	2	-	-	-	3	-	-	-
Total Value	109	264	-	-	-	101	-	-	-
Total Freight Revenue	20	89	-	-	-	92	-	-	-
X - Northern Mindanao									
Total Quantity	a/	142	a/	-	a/	1	-	-	-
Total Value	23	1,738	29	-	1	26	-	-	-
Total Freight Revenue	10	3,850	22	-	1	42	-	-	-
XI - Davao Region									
Total Quantity	33	286	1	33	8	-	-	-	a/
Total Value	374	5,392	56	1,113	413	-	-	-	1
Total Freight Revenue	1,233	8,381	77	1,077	302	-	-	-	3
XII - SOCCSKSARGEN									
Total Quantity	56	32	8	a/	a/	-	-	-	-
Total Value	901	621	21	6	b/	-	-	-	-
Total Freight Revenue	1,430	921	231	13	1	-	-	-	-

(-) means no transaction

a/ Quantity less than 0.5 tons

b/ Value less than thousand pesos

c/ Freight Revenue less than thousand pesos

Source: Philippine Statistics Authority

Table 12. Quantity, Value and Freight Revenue of Air Trade by Commodity Section, and Regions of Origin and Destination: 2019
(Quantity in tons. Value and freight revenue in thousand pesos. Details may not add up to total due to rounding)

Commodity Section and Region of Origin	Total	Region of Destination							
		NCR	CAR	I	II	III	IVA	MIMAROPA Region	V
		(1)	(2)	(3)	(4)	(5)	(6)	(7)	(8)
PHILIPPINES									
Total Quantity	31,072	28,354	-	9	a/	-	-	335	18
Total Value	1,243,136	1,078,474	-	3,759	4	-	-	7,631	7,581
Total Freight Revenue	703,361	667,625	-	553	2	-	-	1,880	900
0-Food and live animals									
Total Quantity	24,720	23,613	-	8	a/	-	-	223	10
Total Value	999,437	880,170	-	3,559	b/	-	-	6,266	7,221
Total Freight Revenue	598,865	577,526	-	480	1	-	-	1,182	796
MIMAROPA Region									
Total Quantity	3,123	3,123	-	-	-	-	-	-	-
Total Value	53,670	53,670	-	-	-	-	-	-	-
Total Freight Revenue	65,196	65,196	-	-	-	-	-	-	-
V - Bicol Region									
Total Quantity	416	404	-	a/	-	-	-	1	a/
Total Value	712	496	-	11	-	-	-	1	1
Total Freight Revenue	9,633	9,108	-	12	-	-	-	37	9
VI - Western Visayas									
Total Quantity	3,957	3,875	-	3	-	-	-	4	7
Total Value	829,353	724,649	-	3,253	-	-	-	4,583	6,981
Total Freight Revenue	107,623	100,333	-	326	-	-	-	554	732
VII - Central Visayas									
Total Quantity	2,292	1,698	-	-	-	-	-	217	3
Total Value	24,899	15,974	-	-	-	-	-	1,648	114
Total Freight Revenue	10,748	8,851	-	-	-	-	-	544	19
VIII - Eastern Visayas									
Total Quantity	7	7	-	-	-	-	-	-	a/
Total Value	30	29	-	-	-	-	-	-	b/
Total Freight Revenue	302	291	-	-	-	-	-	-	2
IX - Zamboanga Peninsula									
Total Quantity	214	212	-	-	-	-	-	-	a/
Total Value	8,143	7,702	-	-	-	-	-	-	109
Total Freight Revenue	6,648	6,528	-	-	-	-	-	-	18
X - Northern Mindanao									
Total Quantity	945	816	-	a/	-	-	-	-	a/
Total Value	4,539	4,042	-	56	-	-	-	-	-
Total Freight Revenue	27,702	24,241	-	7	-	-	-	-	-
XI - Davao Region									
Total Quantity	10,453	10,245	-	5	a/	-	-	1	a/
Total Value	52,268	48,836	-	231	b/	-	-	21	11
Total Freight Revenue	277,694	271,896	-	127	1	-	-	39	14
XII - SOCCSKSARGEN									
Total Quantity	3,314	3,233	-	a/	-	-	-	a/	a/
Total Value	25,823	24,772	-	8	-	-	-	13	5
Total Freight Revenue	93,319	91,082	-	8	-	-	-	8	2
1-Beverages and tobacco									
Total Quantity	19	13	-	-	-	-	-	2	-
Total Value	799	588	-	-	-	-	-	28	-
Total Freight Revenue	320	228	-	-	-	-	-	5	-
MIMAROPA Region									
Total Quantity	a/	a/	-	-	-	-	-	-	-
Total Value	11	11	-	-	-	-	-	-	-
Total Freight Revenue	17	17	-	-	-	-	-	-	-
V - Bicol Region									
Total Quantity	a/	-	-	-	-	-	-	-	-
Total Value	b/	-	-	-	-	-	-	-	-
Total Freight Revenue	c/	-	-	-	-	-	-	-	-
VI - Western Visayas									
Total Quantity	3	2	-	-	-	-	-	-	-
Total Value	355	291	-	-	-	-	-	-	-
Total Freight Revenue	114	81	-	-	-	-	-	-	-
VII - Central Visayas									
Total Quantity	11	8	-	-	-	-	-	2	a/
Total Value	361	252	-	-	-	-	-	28	b/
Total Freight Revenue	44	31	-	-	-	-	-	5	c/
VIII - Eastern Visayas									
Total Quantity	a/	a/	-	-	-	-	-	-	-
Total Value	b/	b/	-	-	-	-	-	-	-
Total Freight Revenue	3	3	-	-	-	-	-	-	-

Table 12. - Concluded

Commodity Section and Region of Origin	Region of Destination								
	VI	VII	VIII	IX	X	XI	XII	XIII	BARMM
	(9)	(10)	(11)	(12)	(13)	(14)	(15)	(16)	(17)
PHILIPPINES									
Total Quantity	561	371	134	71	341	556	250	59	1
Total Value	14,259	19,816	10,942	9,169	15,284	13,261	60,633	1,488	574
Total Freight Revenue	7,799	11,691	1,800	2,291	2,990	2,728	2,574	361	96
0-Food and live animals									
Total Quantity	257	205	32	24	79	124	141	-	1
Total Value	3,797	11,148	8,122	7,483	7,684	5,393	58,017	-	559
Total Freight Revenue	5,856	6,222	1,228	1,254	1,212	985	2,028	-	82
MIMAROPA Region									
Total Quantity	-	-	-	-	-	-	-	-	-
Total Value	-	-	-	-	-	-	-	-	-
Total Freight Revenue	-	-	-	-	-	-	-	-	-
V - Bicol Region									
Total Quantity	2	4	a/	a/	a/	a/	3	-	a/
Total Value	11	163	3	8	2	8	9	-	1
Total Freight Revenue	35	147	1	47	16	44	169	-	7
VI - Western Visayas									
Total Quantity	1	10	9	7	6	7	27	-	1
Total Value	1,100	7,729	7,787	7,129	5,794	3,519	56,273	-	558
Total Freight Revenue	118	747	918	955	757	556	1,552	-	75
VII - Central Visayas									
Total Quantity	54	-	15	9	68	117	111	-	-
Total Value	1,277	-	315	238	1,730	1,866	1,735	-	-
Total Freight Revenue	245	-	77	38	282	385	307	-	-
VIII - Eastern Visayas									
Total Quantity	a/	-	a/	-	-	a/	-	-	-
Total Value	1	-	b/	-	-	b/	-	-	-
Total Freight Revenue	7	-	1	-	-	c/	-	-	-
IX - Zamboanga Peninsula									
Total Quantity	1	-	-	-	1	-	-	-	-
Total Value	263	-	-	-	69	-	-	-	-
Total Freight Revenue	57	-	-	-	45	-	-	-	-
X - Northern Mindanao									
Total Quantity	127	a/	-	a/	1	-	-	-	-
Total Value	369	29	-	1	20	-	-	-	-
Total Freight Revenue	3,382	22	-	1	39	-	-	-	-
XI - Davao Region									
Total Quantity	24	166	a/	8	3	-	-	-	-
Total Value	75	2,919	2	104	69	-	-	-	-
Total Freight Revenue	793	4,538	4	208	73	-	-	-	-
XII - SOCCSKSARGEN									
Total Quantity	48	25	8	a/	-	-	-	-	-
Total Value	701	308	15	3	-	-	-	-	-
Total Freight Revenue	1,219	768	227	5	-	-	-	-	-
1-Beverages and tobacco									
Total Quantity	1	2	a/	1	a/	1	-	-	-
Total Value	46	60	2	40	43	24	-	-	-
Total Freight Revenue	34	40	1	28	1	3	-	-	-
MIMAROPA Region									
Total Quantity	-	-	-	-	-	-	-	-	-
Total Value	-	-	-	-	-	-	-	-	-
Total Freight Revenue	-	-	-	-	-	-	-	-	-
V - Bicol Region									
Total Quantity	-	a/	-	-	-	-	-	-	-
Total Value	-	b/	-	-	-	-	-	-	-
Total Freight Revenue	-	c/	-	-	-	-	-	-	-
VI - Western Visayas									
Total Quantity	a/	-	-	1	-	-	-	-	-
Total Value	26	-	-	38	-	-	-	-	-
Total Freight Revenue	8	-	-	26	-	-	-	-	-
VII - Central Visayas									
Total Quantity	1	-	a/	a/	a/	1	a/	-	-
Total Value	13	-	2	b/	43	24	b/	-	-
Total Freight Revenue	3	-	1	c/	1	3	c/	-	-
VIII - Eastern Visayas									
Total Quantity	-	-	-	-	-	-	-	-	-
Total Value	-	-	-	-	-	-	-	-	-
Total Freight Revenue	-	-	-	-	-	-	-	-	-

Table 12. - Continued

Commodity Section and Region of Origin	Total	Region of Destination							
		NCR	CAR	I	II	III	IVA	MIMAROPA Region	V
		(1)	(2)	(3)	(4)	(5)	(6)	(7)	(8)
X - Northern Mindanao									
Total Quantity	a/	a/	-	-	-	-	-	-	-
Total Value	1	1	-	-	-	-	-	-	-
Total Freight Revenue	2	2	-	-	-	-	-	-	-
XI - Davao Region									
Total Quantity	4	3	-	-	-	-	-	-	-
Total Value	63	28	-	-	-	-	-	-	-
Total Freight Revenue	130	93	-	-	-	-	-	-	-
XII - SOCCSKSARGEN									
Total Quantity	a/	a/	-	-	-	-	-	-	-
Total Value	8	5	-	-	-	-	-	-	-
Total Freight Revenue	9	1	-	-	-	-	-	-	-
2-Crude materials, inedible, except fuels									
Total Quantity	198	178	-	-	-	-	-	1	-
Total Value	3,642	2,713	-	2	-	-	-	53	17
Total Freight Revenue	2,671	2,250	-	2	-	-	-	8	7
MIMAROPA Region									
Total Quantity	65	65	-	-	-	-	-	-	-
Total Value	296	296	-	-	-	-	-	-	-
Total Freight Revenue	393	393	-	-	-	-	-	-	-
V - Bicol Region									
Total Quantity	a/	a/	-	-	-	-	-	-	-
Total Value	1	b/	-	-	-	-	-	-	-
Total Freight Revenue	4	c/	-	-	-	-	-	-	-
VI - Western Visayas									
Total Quantity	5	5	-	-	-	-	-	-	a/
Total Value	629	592	-	-	-	-	-	-	b/
Total Freight Revenue	169	156	-	-	-	-	-	-	c/
VII - Central Visayas									
Total Quantity	78	67	-	-	-	-	-	1	a/
Total Value	1,341	697	-	-	-	-	-	51	16
Total Freight Revenue	345	280	-	-	-	-	-	6	2
VIII - Eastern Visayas									
Total Quantity	a/	a/	-	-	-	-	-	-	-
Total Value	b/	b/	-	-	-	-	-	-	-
Total Freight Revenue	4	4	-	-	-	-	-	-	-
IX - Zamboanga Peninsula									
Total Quantity	3	2	-	-	-	-	-	-	-
Total Value	48	47	-	-	-	-	-	-	-
Total Freight Revenue	123	92	-	-	-	-	-	-	-
X - Northern Mindanao									
Total Quantity	32	30	-	-	-	-	-	-	-
Total Value	519	495	-	-	-	-	-	-	-
Total Freight Revenue	1,025	978	-	-	-	-	-	-	-
XI - Davao Region									
Total Quantity	9	6	-	a/	-	-	-	a/	a/
Total Value	313	160	-	2	-	-	-	1	1
Total Freight Revenue	375	212	-	2	-	-	-	1	5
XII - SOCCSKSARGEN									
Total Quantity	6	3	-	-	-	-	-	a/	-
Total Value	495	426	-	-	-	-	-	1	-
Total Freight Revenue	232	135	-	-	-	-	-	1	-
3-Mineral fuels, lubricants and related materials									
Total Quantity	4	a/	-	-	-	-	-	a/	-
Total Value	173	b/	-	-	-	-	-	17	1
Total Freight Revenue	26	c/	-	-	-	-	-	-	-
MIMAROPA Region									
Total Quantity	a/	a/	-	-	-	-	-	-	-
Total Value	b/	b/	-	-	-	-	-	-	-
Total Freight Revenue	c/	c/	-	-	-	-	-	-	-
VI - Western Visayas									
Total Quantity	a/	a/	-	-	-	-	-	-	-
Total Value	2	2	-	-	-	-	-	-	-
Total Freight Revenue	6	6	-	-	-	-	-	-	-
VII - Central Visayas									
Total Quantity	4	2	-	-	-	-	-	a/	a/
Total Value	170	79	-	-	-	-	-	17	1
Total Freight Revenue	20	12	-	-	-	-	-	a/	a/

Table 12. - Continued

Commodity Section and Region of Origin	Region of Destination								
	VI	VII	VIII	IX	X	XI	XII	XIII	BARMM
	(9)	(10)	(11)	(12)	(13)	(14)	(15)	(16)	(17)
X - Northern Mindanao									
Total Quantity	-	-	-	-	-	-	-	-	-
Total Value	-	-	-	-	-	-	-	-	-
Total Freight Revenue	-	-	-	-	-	-	-	-	-
XI - Davao Region									
Total Quantity	a/	1	-	a/	-	-	-	-	-
Total Value	4	30	-	1	-	-	-	-	-
Total Freight Revenue	16	20	-	1	-	-	-	-	-
XII - SOCCSKSARGEN									
Total Quantity	a/	1	-	a/	-	-	-	-	-
Total Value	3	30	-	1	-	-	-	-	-
Total Freight Revenue	7	20	-	1	-	-	-	-	-
2-Crude materials, inedible, except fuels									
Total Quantity	10	3	1	1	2	1	1	1	-
Total Value	340	135	52	17	90	131	20	71	-
Total Freight Revenue	161	156	9	37	12	21	3	6	-
MIMAROPA Region									
Total Quantity	-	-	-	-	-	-	-	-	-
Total Value	-	-	-	-	-	-	-	-	-
Total Freight Revenue	-	-	-	-	-	-	-	-	-
V - Bicol Region									
Total Quantity	a/	-	-	a/	-	-	-	-	-
Total Value	1	-	-	b/	-	-	-	-	-
Total Freight Revenue	3	-	-	1	-	-	-	-	-
VI - Western Visayas									
Total Quantity	a/	-	-	-	-	a/	-	-	-
Total Value	b/	-	-	-	-	37	-	-	-
Total Freight Revenue	1	-	-	-	-	11	-	-	-
VII - Central Visayas									
Total Quantity	5	a/	1	-	2	1	1	1	-
Total Value	250	b/	51	-	90	94	20	71	-
Total Freight Revenue	21	c/	5	-	12	10	3	6	-
VIII - Eastern Visayas									
Total Quantity	-	a/	-	-	-	-	-	-	-
Total Value	-	b/	-	-	-	-	-	-	-
Total Freight Revenue	-	c/	-	-	-	-	-	-	-
IX - Zamboanga Peninsula									
Total Quantity	-	1	-	-	-	-	-	-	-
Total Value	-	1	-	-	-	-	-	-	-
Total Freight Revenue	-	31	-	-	-	-	-	-	-
X - Northern Mindanao									
Total Quantity	2	-	-	-	-	-	-	-	-
Total Value	24	-	-	-	-	-	-	-	-
Total Freight Revenue	47	-	-	-	-	-	-	-	-
XI - Davao Region									
Total Quantity	a/	2	a/	1	-	-	-	-	-
Total Value	1	130	1	17	-	-	-	-	-
Total Freight Revenue	2	115	4	36	-	-	-	-	-
XII - SOCCSKSARGEN									
Total Quantity	3	a/	-	-	-	-	-	-	-
Total Value	64	4	-	-	-	-	-	-	-
Total Freight Revenue	87	10	-	-	-	-	-	-	-
3-Mineral fuels, lubricants and related materials									
Total Quantity	a/	-	a/	-	1	a/	-	-	-
Total Value	17	-	36	-	8	11	-	-	-
Total Freight Revenue	2	-	1	-	4	1	-	-	-
MIMAROPA Region									
Total Quantity	-	-	-	-	-	-	-	-	-
Total Value	-	-	-	-	-	-	-	-	-
Total Freight Revenue	-	-	-	-	-	-	-	-	-
VI - Western Visayas									
Total Quantity	-	-	-	-	-	-	-	-	-
Total Value	-	-	-	-	-	-	-	-	-
Total Freight Revenue	-	-	-	-	-	-	-	-	-
VII - Central Visayas									
Total Quantity	a/	-	a/	-	1	a/	a/	-	-
Total Value	17	-	36	-	8	11	b/	-	-
Total Freight Revenue	2	-	1	-	4	1	c/	-	-

Table 12. - Continued

Commodity Section and Region of Origin	Total	Region of Destination							
		NCR	CAR	I	II	III	IVA	MIMAROPA Region	V
		(1)	(2)	(3)	(4)	(5)	(6)	(7)	(8)
4-Animal and vegetable oils, fats and waxes									
Total Quantity	1	a/	-	-	-	-	-	-	-
Total Value	64	64	-	-	-	-	-	-	-
Total Freight Revenue	40	40	-	-	-	-	-	-	-
VI - Western Visayas									
Total Quantity	a/	a/	-	-	-	-	-	-	-
Total Value	43	43	-	-	-	-	-	-	-
Total Freight Revenue	16	16	-	-	-	-	-	-	-
VII - Central Visayas									
Total Quantity	a/	a/	-	-	-	-	-	-	-
Total Value	16	15	-	-	-	-	-	-	-
Total Freight Revenue	13	12	-	-	-	-	-	-	-
IX - Zamboanga Peninsula									
Total Quantity	a/	a/	-	-	-	-	-	-	-
Total Value	b/	b/	-	-	-	-	-	-	-
Total Freight Revenue	1	1	-	-	-	-	-	-	-
X - Northern Mindanao									
Total Quantity	a/	a/	-	-	-	-	-	-	-
Total Value	1	1	-	-	-	-	-	-	-
Total Freight Revenue	1	1	-	-	-	-	-	-	-
XI - Davao Region									
Total Quantity	a/	a/	-	-	-	-	-	-	-
Total Value	2	2	-	-	-	-	-	-	-
Total Freight Revenue	1	1	-	-	-	-	-	-	-
XII - SOCCSKSARGEN									
Total Quantity	a/	a/	-	-	-	-	-	-	-
Total Value	3	3	-	-	-	-	-	-	-
Total Freight Revenue	9	9	-	-	-	-	-	-	-
5-Chemical and related products, not elsewhere classified									
Total Quantity	322	104	-	a/	-	-	-	45	a/
Total Value	20,444	14,129	-	2	-	-	-	323	15
Total Freight Revenue	3,599	2,419	-	5	-	-	-	159	3
MIMAROPA Region									
Total Quantity	2	2	-	-	-	-	-	-	-
Total Value	36	36	-	-	-	-	-	-	-
Total Freight Revenue	47	47	-	-	-	-	-	-	-
V - Bicol Region									
Total Quantity	3	1	-	-	-	-	-	a/	-
Total Value	44	33	-	-	-	-	-	b/	-
Total Freight Revenue	115	34	-	-	-	-	-	2	-
VI - Western Visayas									
Total Quantity	20	18	-	-	-	-	-	a/	a/
Total Value	10,601	9,005	-	-	-	-	-	188	9
Total Freight Revenue	865	760	-	-	-	-	-	13	1
VII - Central Visayas									
Total Quantity	268	58	-	-	-	-	-	45	a/
Total Value	8,356	3,919	-	-	-	-	-	135	6
Total Freight Revenue	1,130	338	-	-	-	-	-	144	2
VIII - Eastern Visayas									
Total Quantity	a/	a/	-	-	-	-	-	-	-
Total Value	b/	b/	-	-	-	-	-	-	-
Total Freight Revenue	c/	c/	-	-	-	-	-	-	-
IX - Zamboanga Peninsula									
Total Quantity	1	1	-	-	-	-	-	-	-
Total Value	61	60	-	-	-	-	-	-	-
Total Freight Revenue	47	46	-	-	-	-	-	-	-
X - Northern Mindanao									
Total Quantity	2	1	-	-	-	-	-	-	-
Total Value	217	95	-	-	-	-	-	-	-
Total Freight Revenue	93	74	-	-	-	-	-	-	-
XI - Davao Region									
Total Quantity	27	21	-	a/	-	-	-	-	-
Total Value	829	683	-	2	-	-	-	-	-
Total Freight Revenue	1,198	1,022	-	5	-	-	-	-	-
XII - SOCCSKSARGEN									
Total Quantity	2	2	-	-	-	-	-	-	-
Total Value	301	298	-	-	-	-	-	-	-
Total Freight Revenue	102	98	-	-	-	-	-	-	-

Table 12. - Continued

Commodity Section and Region of Origin	Region of Destination								
	VI	VII	VIII	IX	X	XI	XII	XIII	BARMM
	(9)	(10)	(11)	(12)	(13)	(14)	(15)	(16)	(17)
4-Animal and vegetable oils, fats and waxes									
Total Quantity	-	-	-	-	-	a/	-	-	-
Total Value	-	-	-	-	-	1	-	-	-
Total Freight Revenue	-	-	-	-	-	c/	-	-	-
VI - Western Visayas									
Total Quantity	-	-	-	-	-	-	-	-	-
Total Value	-	-	-	-	-	-	-	-	-
Total Freight Revenue	-	-	-	-	-	-	-	-	-
VII - Central Visayas									
Total Quantity	-	-	-	-	-	a/	-	-	-
Total Value	-	-	-	-	-	1	-	-	-
Total Freight Revenue	-	-	-	-	-	c/	-	-	-
IX - Zamboanga Peninsula									
Total Quantity	-	-	-	-	-	-	-	-	-
Total Value	-	-	-	-	-	-	-	-	-
Total Freight Revenue	-	-	-	-	-	-	-	-	-
X - Northern Mindanao									
Total Quantity	-	-	-	-	-	-	-	-	-
Total Value	-	-	-	-	-	-	-	-	-
Total Freight Revenue	-	-	-	-	-	-	-	-	-
XI - Davao Region									
Total Quantity	-	-	-	-	-	-	-	-	-
Total Value	-	-	-	-	-	-	-	-	-
Total Freight Revenue	-	-	-	-	-	-	-	-	-
XII - SOCCSKSARGEN									
Total Quantity	-	-	-	-	-	-	-	-	-
Total Value	-	-	-	-	-	-	-	-	-
Total Freight Revenue	-	-	-	-	-	-	-	-	-
5-Chemical and related products, not elsewhere classified									
Total Quantity	35	4	30	20	45	28	11	-	-
Total Value	1,388	640	563	399	1,478	1,287	220	-	-
Total Freight Revenue	211	138	121	121	224	149	48	-	-
MIMAROPA Region									
Total Quantity	-	-	-	-	-	-	-	-	-
Total Value	-	-	-	-	-	-	-	-	-
Total Freight Revenue	-	-	-	-	-	-	-	-	-
V - Bicol Region									
Total Quantity	a/	1	a/	a/	a/	a/	a/	-	-
Total Value	1	8	b/	b/	1	1	*	-	-
Total Freight Revenue	20	28	1	3	18	10	1	-	-
VI - Western Visayas									
Total Quantity	-	1	a/	a/	1	a/	a/	-	-
Total Value	-	397	4	35	679	177	107	-	-
Total Freight Revenue	-	30	1	2	32	19	7	-	-
VII - Central Visayas									
Total Quantity	34	a/	30	17	44	28	11	-	-
Total Value	1,375	30	543	338	788	1,108	113	-	-
Total Freight Revenue	152	3	103	59	171	119	40	-	-
VIII - Eastern Visayas									
Total Quantity	-	-	-	-	-	-	-	-	-
Total Value	-	-	-	-	-	-	-	-	-
Total Freight Revenue	-	-	-	-	-	-	-	-	-
IX - Zamboanga Peninsula									
Total Quantity	-	-	-	-	-	a/	-	-	-
Total Value	-	-	-	-	-	1	-	-	-
Total Freight Revenue	-	-	-	-	-	1	-	-	-
X - Northern Mindanao									
Total Quantity	-	a/	-	-	-	-	-	-	-
Total Value	-	122	-	-	-	-	-	-	-
Total Freight Revenue	-	18	-	-	-	-	-	-	-
XI - Davao Region									
Total Quantity	1	2	a/	3	a/	-	-	-	-
Total Value	9	83	16	26	10	-	-	-	-
Total Freight Revenue	35	59	16	57	3	-	-	-	-
XII - SOCCSKSARGEN									
Total Quantity	a/	-	-	-	-	-	-	-	-
Total Value	3	-	-	-	-	-	-	-	-
Total Freight Revenue	4	-	-	-	-	-	-	-	-

Table 12. - Continued

Commodity Section and Region of Origin	Total	Region of Destination							
		NCR	CAR	I	II	III	IVA	MIMAROPA Region	V
		(1)	(2)	(3)	(4)	(5)	(6)	(7)	(8)
6-Manufactured goods classified chiefly by material									
Total Quantity	327	265	-	a/	a/	-	-	6	1
Total Value	10,678	8,887	-	6	4	-	-	86	31
Total Freight Revenue	3,035	2,031	-	6	1	-	-	50	4
MIMAROPA Region									
Total Quantity	7	7	-	-	-	-	-	-	-
Total Value	133	133	-	-	-	-	-	-	-
Total Freight Revenue	168	168	-	-	-	-	-	-	-
V - Bicol Region									
Total Quantity	6	1	-	-	-	-	-	a/	-
Total Value	23	3	-	-	-	-	-	b/	-
Total Freight Revenue	146	21	-	-	-	-	-	2	-
VI - Western Visayas									
Total Quantity	38	20	-	a/	-	-	-	a/	-
Total Value	2,340	2,259	-	b/	-	-	-	9	-
Total Freight Revenue	1,121	575	-	c/	-	-	-	8	-
VII - Central Visayas									
Total Quantity	259	225	-	-	-	-	-	5	1
Total Value	7,586	6,077	-	-	-	-	-	77	31
Total Freight Revenue	922	781	-	-	-	-	-	14	4
VIII - Eastern Visayas									
Total Quantity	a/	a/	-	-	-	-	-	-	-
Total Value	b/	b/	-	-	-	-	-	-	-
Total Freight Revenue	9	9	-	-	-	-	-	-	-
IX - Zamboanga Peninsula									
Total Quantity	1	1	-	-	-	-	-	-	-
Total Value	56	51	-	-	-	-	-	-	-
Total Freight Revenue	33	32	-	-	-	-	-	-	-
X - Northern Mindanao									
Total Quantity	1	1	-	-	-	-	-	-	-
Total Value	31	29	-	-	-	-	-	-	-
Total Freight Revenue	71	69	-	-	-	-	-	-	-
XI - Davao Region									
Total Quantity	14	9	-	a/	a/	-	-	-	-
Total Value	489	315	-	6	4	-	-	-	-
Total Freight Revenue	506	346	-	6	1	-	-	-	-
XII - SOCCSKSARGEN									
Total Quantity	2	1	-	-	-	-	-	1	-
Total Value	21	20	-	-	-	-	-	b/	-
Total Freight Revenue	59	30	-	-	-	-	-	26	-
7-Machinery and transport equipment									
Total Quantity	698	562	-	1	-	-	-	6	1
Total Value	82,545	65,855	-	118	-	-	-	208	87
Total Freight Revenue	10,870	9,104	-	27	-	-	-	58	15
MIMAROPA Region									
Total Quantity	8	8	-	-	-	-	-	-	-
Total Value	219	219	-	-	-	-	-	-	-
Total Freight Revenue	284	284	-	-	-	-	-	-	-
V - Bicol Region									
Total Quantity	3	2	-	-	-	-	-	a/	a/
Total Value	21	10	-	-	-	-	-	b/	1
Total Freight Revenue	123	81	-	-	-	-	-	6	6
VI - Western Visayas									
Total Quantity	81	76	-	a/	-	-	-	a/	a/
Total Value	50,605	47,375	-	42	-	-	-	34	5
Total Freight Revenue	3,681	3,381	-	8	-	-	-	9	2
VII - Central Visayas									
Total Quantity	507	397	-	a/	-	-	-	5	1
Total Value	23,752	11,935	-	10	-	-	-	174	79
Total Freight Revenue	2,136	1,430	-	c/	-	-	-	21	6
VIII - Eastern Visayas									
Total Quantity	a/	a/	-	-	-	-	-	-	-
Total Value	b/	b/	-	-	-	-	-	-	-
Total Freight Revenue	11	11	-	-	-	-	-	-	-
IX - Zamboanga Peninsula									
Total Quantity	6	6	-	-	-	-	-	-	-
Total Value	633	623	-	-	-	-	-	-	-
Total Freight Revenue	424	420	-	-	-	-	-	-	-

Table 12. - Continued

Commodity Section and Region of Origin	Region of Destination								
	VI	VII	VIII	IX	X	XI	XII	XIII	BARMM
	(9)	(10)	(11)	(12)	(13)	(14)	(15)	(16)	(17)
6-Manufactured goods classified chiefly by material									
Total Quantity	4	4	3	a/	18	15	9	3	a/
Total Value	243	176	89	56	242	407	416	79	b/
Total Freight Revenue	28	157	16	22	476	200	25	28	1
MIMAROPA Region									
Total Quantity	-	-	-	-	-	-	-	-	-
Total Value	-	-	-	-	-	-	-	-	-
Total Freight Revenue	-	-	-	-	-	-	-	-	-
V - Bicol Region									
Total Quantity	a/	1	a/	a/	2	2	-	-	a/
Total Value	b/	13	b/	5	1	b/	-	-	b/
Total Freight Revenue	c/	18	1	5	63	35	-	-	1
VI - Western Visayas									
Total Quantity	-	a/	a/	a/	12	5	-	-	-
Total Value	-	39	6	1	24	2	-	-	-
Total Freight Revenue	-	18	1	1	387	131	-	-	-
VII - Central Visayas									
Total Quantity	4	a/	3	a/	4	8	9	2	-
Total Value	243	16	83	1	216	400	416	71	-
Total Freight Revenue	25	2	14	c/	23	33	25	9	-
VIII - Eastern Visayas									
Total Quantity	-	-	-	-	-	-	-	-	-
Total Value	-	-	-	-	-	-	-	-	-
Total Freight Revenue	-	-	-	-	-	-	-	-	-
IX - Zamboanga Peninsula									
Total Quantity	-	-	-	-	-	a/	-	-	-
Total Value	-	-	-	-	-	5	-	-	-
Total Freight Revenue	-	-	-	-	-	1	-	-	-
X - Northern Mindanao									
Total Quantity	-	a/	-	-	-	-	-	-	-
Total Value	-	1	-	-	-	-	-	-	-
Total Freight Revenue	-	2	-	-	-	-	-	-	-
XI - Davao Region									
Total Quantity	-	3	-	a/	a/	-	-	1	-
Total Value	-	107	-	49	1	-	-	8	-
Total Freight Revenue	-	117	-	16	3	-	-	19	-
XII - SOCCSKSARGEN									
Total Quantity	a/	-	-	-	-	-	-	-	-
Total Value	b/	-	-	-	-	-	-	-	-
Total Freight Revenue	3	-	-	-	-	-	-	-	-
7-Machinery and transport equipment									
Total Quantity	29	13	12	6	19	30	15	a/	a/
Total Value	5,677	3,127	747	409	2,048	2,833	1,035	20	14
Total Freight Revenue	274	471	96	183	251	152	116	6	7
MIMAROPA Region									
Total Quantity	-	-	-	-	-	-	-	-	-
Total Value	-	-	-	-	-	-	-	-	-
Total Freight Revenue	-	-	-	-	-	-	-	-	-
V - Bicol Region									
Total Quantity	-	a/	a/	a/	-	a/	a/	a/	a/
Total Value	-	7	1	b/	-	b/	1	b/	b/
Total Freight Revenue	-	14	5	1	-	2	6	1	c/
VI - Western Visayas									
Total Quantity	a/	3	a/	a/	1	a/	1	a/	a/
Total Value	28	2,230	28	8	519	217	107	18	12
Total Freight Revenue	8	126	9	3	59	35	35	3	5
VII - Central Visayas									
Total Quantity	28	a/	12	1	17	30	14	a/	a/
Total Value	5,531	17	710	42	1,432	2,606	927	1	1
Total Freight Revenue	183	3	75	3	134	110	75	c/	c/
VIII - Eastern Visayas									
Total Quantity	-	-	-	-	-	-	-	-	-
Total Value	-	-	-	-	-	-	-	-	-
Total Freight Revenue	-	-	-	-	-	-	-	-	-
IX - Zamboanga Peninsula									
Total Quantity	-	-	-	-	-	a/	-	-	-
Total Value	-	-	-	-	-	10	-	-	-
Total Freight Revenue	-	-	-	-	-	5	-	-	-

Table 12. - Continued

Commodity Section and Region of Origin	Total	Region of Destination							
		NCR	CAR	I	II	III	IVA	MIMAROPA Region	V
		(1)	(2)	(3)	(4)	(5)	(6)	(7)	(8)
X - Northern Mindanao									
Total Quantity	1	1	-	-	-	-	-	-	-
Total Value	44	39	-	-	-	-	-	-	-
Total Freight Revenue	46	43	-	-	-	-	-	-	-
XI - Davao Region									
Total Quantity	66	51	-	1	-	-	-	-	a/
Total Value	6,403	4,907	-	66	-	-	-	-	2
Total Freight Revenue	3,472	2,832	-	19	-	-	-	-	1
XII - SOCCSKSARGEN									
Total Quantity	26	21	-	-	-	-	-	1	-
Total Value	868	747	-	-	-	-	-	b/	-
Total Freight Revenue	694	622	-	-	-	-	-	22	-
8-Miscellaneous manufactured articles									
Total Quantity	960	765	-	a/	-	-	-	21	2
Total Value	46,768	39,490	-	34	-	-	-	307	62
Total Freight Revenue	20,541	17,213	-	17	-	-	-	250	27
MIMAROPA Region									
Total Quantity	14	14	-	-	-	-	-	-	-
Total Value	538	538	-	-	-	-	-	-	-
Total Freight Revenue	473	473	-	-	-	-	-	-	-
V - Bicol Region									
Total Quantity	20	8	-	-	-	-	-	4	-
Total Value	374	209	-	-	-	-	-	27	-
Total Freight Revenue	964	414	-	-	-	-	-	135	-
VI - Western Visayas									
Total Quantity	126	119	-	a/	-	-	-	a/	a/
Total Value	22,796	21,086	-	12	-	-	-	101	b/
Total Freight Revenue	6,091	5,674	-	4	-	-	-	26	1
VII - Central Visayas									
Total Quantity	577	439	-	-	a/	-	-	16	2
Total Value	13,756	9,358	-	-	b/	-	-	173	60
Total Freight Revenue	2,973	2,143	-	-	c/	-	-	54	16
VIII - Eastern Visayas									
Total Quantity	1	1	-	-	-	-	-	-	-
Total Value	6	6	-	-	-	-	-	-	-
Total Freight Revenue	46	45	-	-	-	-	-	-	-
IX - Zamboanga Peninsula									
Total Quantity	8	8	-	-	-	-	-	-	-
Total Value	630	617	-	-	-	-	-	-	-
Total Freight Revenue	407	401	-	-	-	-	-	-	-
X - Northern Mindanao									
Total Quantity	21	16	-	-	-	-	-	-	-
Total Value	232	223	-	-	-	-	-	-	-
Total Freight Revenue	621	537	-	-	-	-	-	-	-
XI - Davao Region									
Total Quantity	168	139	-	a/	-	-	-	1	a/
Total Value	5,912	5,010	-	22	-	-	-	6	2
Total Freight Revenue	7,979	6,626	-	13	-	-	-	35	10
XII - SOCCSKSARGEN									
Total Quantity	25	21	-	-	-	-	-	-	-
Total Value	2,523	2,443	-	-	-	-	-	-	-
Total Freight Revenue	989	900	-	-	-	-	-	-	-
9-Commodities and transactions not elsewhere classified in the PSCC									
Total Quantity	3,823	2,854	-	-	-	-	-	31	4
Total Value	78,586	66,578	-	38	-	-	-	343	147
Total Freight Revenue	63,395	56,814	-	16	-	-	-	168	48
MIMAROPA Region									
Total Quantity	271	271	-	-	-	-	-	-	-
Total Value	6,475	6,475	-	-	-	-	-	-	-
Total Freight Revenue	6,684	6,684	-	-	-	-	-	-	-

Table 12. - Continued

Commodity Section and Region of Origin	Region of Destination								
	VI	VII	VIII	IX	X	XI	XII	XIII	BARMM
	(9)	(10)	(11)	(12)	(13)	(14)	(15)	(16)	(17)
X - Northern Mindanao									
Total Quantity	-	a/	-	-	-	-	-	a/	-
Total Value	-	5	-	-	-	-	-	b/	-
Total Freight Revenue	-	2	-	-	-	-	-	c/	-
XI - Davao Region									
Total Quantity	1	7	a/	5	1	-	-	a/	a/
Total Value	93	774	8	358	97	-	-	1	1
Total Freight Revenue	69	292	7	174	58	-	-	2	2
XII - SOCCSKSARGEN									
Total Quantity	a/	3	-	a/	-	-	-	-	-
Total Value	25	94	-	1	-	-	-	-	-
Total Freight Revenue	14	34	-	2	-	-	-	-	-
8-Miscellaneous manufactured articles									
Total Quantity	32	35	23	9	19	33	13	8	a/
Total Value	1,157	1,718	598	395	938	1,575	329	295	b/
Total Freight Revenue	445	1,460	157	291	217	294	98	85	2
MIMAROPA Region									
Total Quantity	-	-	-	-	-	-	-	-	-
Total Value	-	-	-	-	-	-	-	-	-
Total Freight Revenue	-	-	-	-	-	-	-	-	-
V - Bicol Region									
Total Quantity	a/	6	a/	a/	a/	1	a/	a/	a/
Total Value	3	117	1	1	1	14	2	b/	b/
Total Freight Revenue	33	278	3	15	21	51	10	2	1
VI - Western Visayas									
Total Quantity	a/	5	a/	a/	1	1	a/	a/	a/
Total Value	89	950	19	4	263	220	49	4	b/
Total Freight Revenue	18	242	10	5	34	42	30	2	1
VII - Central Visayas									
Total Quantity	26	1	23	3	18	31	13	7	-
Total Value	1,000	24	570	165	669	1,341	278	244	-
Total Freight Revenue	173	4	133	24	134	201	58	50	-
VIII - Eastern Visayas									
Total Quantity	-	a/	-	-	-	-	-	-	-
Total Value	-	b/	-	-	-	-	-	-	-
Total Freight Revenue	-	1	-	-	-	-	-	-	-
IX - Zamboanga Peninsula									
Total Quantity	a/	-	-	a/	-	-	-	-	-
Total Value	b/	-	-	14	-	-	-	-	-
Total Freight Revenue	c/	-	-	5	-	-	-	-	-
X - Northern Mindanao									
Total Quantity	-	5	-	-	-	-	-	-	-
Total Value	-	10	-	-	-	-	-	-	-
Total Freight Revenue	-	84	-	-	-	-	-	-	-
XI - Davao Region									
Total Quantity	4	17	a/	6	a/	-	-	1	a/
Total Value	45	558	8	210	5	-	-	47	b/
Total Freight Revenue	192	796	11	238	27	-	-	31	c/
XII - SOCCSKSARGEN									
Total Quantity	2	1	-	a/	a/	-	-	-	-
Total Value	20	59	-	1	b/	-	-	-	-
Total Freight Revenue	29	55	-	4	1	-	-	-	-
9-Commodities and transactions not elsewhere classified in the PSCC									
Total Quantity	193	105	33	10	158	324	60	47	a/
Total Value	1,594	2,812	733	370	2,753	1,599	596	1,023	1
Total Freight Revenue	788	3,047	171	355	593	923	256	236	4
MIMAROPA Region									
Total Quantity	-	-	-	-	-	-	-	-	-
Total Value	-	-	-	-	-	-	-	-	-
Total Freight Revenue	-	-	-	-	-	-	-	-	-

Table 12. - Continued

Commodity Section and Region of Origin	Total	Region of Destination							
		NCR	CAR	I	II	III	IVA	MIMAROPA Region	V
		(1)	(2)	(3)	(4)	(5)	(6)	(7)	(8)
V - Bicol Region									
Total Quantity	14	10	-	-	-	-	-	a/	-
Total Value	130	49	-	-	-	-	-	2	-
Total Freight Revenue	618	414	-	-	-	-	-	8	-
VI - Western Visayas									
Total Quantity	179	171	-	a/	-	-	-	a/	a/
Total Value	22,531	21,552	-	1	-	-	-	75	2
Total Freight Revenue	6,849	6,543	-	3	-	-	-	27	1
VII - Central Visayas									
Total Quantity	1,925	1,087	-	-	-	-	-	31	4
Total Value	20,602	12,599	-	-	-	-	-	230	132
Total Freight Revenue	5,532	3,069	-	-	-	-	-	112	20
VIII - Eastern Visayas									
Total Quantity	20	19	-	-	-	-	-	-	-
Total Value	44	40	-	-	-	-	-	-	-
Total Freight Revenue	655	618	-	-	-	-	-	-	-
IX - Zamboanga Peninsula									
Total Quantity	298	297	-	-	-	-	-	a/	-
Total Value	7,617	7,614	-	-	-	-	-	1	-
Total Freight Revenue	5,062	5,022	-	-	-	-	-	1	-
X - Northern Mindanao									
Total Quantity	64	56	-	-	-	-	-	a/	-
Total Value	2,466	1,251	-	-	-	-	-	2	-
Total Freight Revenue	2,973	2,654	-	-	-	-	-	1	-
XI - Davao Region									
Total Quantity	1,030	926	-	a/	-	-	-	a/	a/
Total Value	17,709	16,243	-	37	-	-	-	25	13
Total Freight Revenue	34,161	31,088	-	13	-	-	-	8	27
XII - SOCCSKSARGEN									
Total Quantity	21	17	-	-	-	-	-	a/	-
Total Value	1,012	755	-	-	-	-	-	8	-
Total Freight Revenue	861	722	-	-	-	-	-	11	-

Table 12. - Concluded

Commodity Section and Region of Origin	Region of Destination								
	VI	VII	VIII	IX	X	XI	XII	XIII	BARMM
	(9)	(10)	(11)	(12)	(13)	(14)	(15)	(16)	(17)
V - Bicol Region									
Total Quantity	1	2	-	a/	a/	a/	a/	a/	a/
Total Value	2	61	-	6	5	3	1	b/	b/
Total Freight Revenue	27	86	-	18	18	33	10	12	3
VI - Western Visayas									
Total Quantity	a/	4	a/	a/	1	1	2	a/	a/
Total Value	1	587	9	28	59	115	100	b/	1
Total Freight Revenue	1	118	4	11	25	36	80	12	1
VII - Central Visayas									
Total Quantity	189	a/	33	a/	156	322	58	46	-
Total Value	1,355	5	696	4	2,669	1,473	495	943	-
Total Freight Revenue	557	1	129	1	500	814	166	164	-
VIII - Eastern Visayas									
Total Quantity	a/	1	-	-	-	a/	-	-	-
Total Value	b/	4	-	-	-	b/	-	-	-
Total Freight Revenue	8	28	-	-	-	1	-	-	-
IX - Zamboanga Peninsula									
Total Quantity	a/	a/	-	-	-	1	-	-	-
Total Value	1	b/	-	-	-	2	-	-	-
Total Freight Revenue	1	1	-	-	-	36	-	-	-
X - Northern Mindanao									
Total Quantity	a/	8	-	-	-	a/	-	-	-
Total Value	2	1,207	-	-	-	6	-	-	-
Total Freight Revenue	c/	315	-	-	-	3	-	-	-
XI - Davao Region									
Total Quantity	2	88	a/	10	1	-	-	1	-
Total Value	148	792	22	330	20	-	-	80	-
Total Freight Revenue	127	2,444	34	322	50	-	-	48	-
XII - SOCCSKSARGEN									
Total Quantity	1	2	a/	a/	-	-	-	-	-
Total Value	85	156	6	2	-	-	-	-	-
Total Freight Revenue	67	54	4	3	-	-	-	-	-

(-) means no transaction

a/ Quantity less than 0.5 tons

b/ Value less than thousand pesos

c/ Freight Revenue less than 1000 pesos

Source: Philippine Statistics Authority

Table 13. Number of Passengers by Region of Origin, Port of Origin and Year : 2015 – 2019

PORT CODE	Region and Port of Origin	2015	2016	2017	2018	2019
		(1)	(2)	(3)	(4)	(5)
TOTAL		20,477,999	30,900,612	39,891,098	39,245,111	28,133,642
NCR		538,425	568,714	629,654	512,902	504,770
39150	Manila (First District) North Harbor	538,425	568,714	629,654	512,902	494,014
I - Ilocos Region		-	-	-	-	-
II - Cagayan Valley		-	-	-	-	-
III - Central Luzon		-	-	-	27,211	43,276
08150	Mariveles, Bataan	-	-	-	27,211	43,276
IVA - CALABARZON		5,592,334	10,095,381	16,395,179	16,690,294	461,604
10110	Port Of Batangas	-	-	-	-	-
	Sta. Clara, Batangas	5,473,571	9,979,563	15,966,479	16,253,003	-
56500	Other National Ports (Quezon)	118,763	115,818	428,700	437,291	461,604
MIMAROPA Region		1,820,157	3,667,831	4,574,876	3,991,653	4,451,404
40510	Balanacan, Marinduque	235,822	372,594	486,033	452,199	415,907
40725	Boac (Kawit), Boac, Marinduque	23,741	30,832	-	-	25,528
51500	Other National Ports (Occidental Mindoro)	56,212	240,919	627,464	584,470	841,686
52530	Calapan, Oriental Mindoro	1,226,299	2,565,046	2,995,752	2,482,094	2,732,694
53160	Puerta Princesa City, Palawan	54,729	130,570	144,613	154,223	167,220
53700	Other Municipal Ports (Palawan)	-	-	-	1,159	98
59700	Other Municipal Ports (Romblon)	119,888	171,395	171,697	196,001	187,183
59765	Romblon, Romblon	103,466	156,475	149,317	121,507	81,088
V - Bicol Region		1,240,750	2,217,117	2,066,818	1,512,697	3,315,160
05180	Tabaco, Albay	188,985	244,395	253,880	261,503	316,777
17360	Pasacao, Camarines Sur	-	214	-	-	-
20185	Virac, Catanduanes	36,300	39,462	33,950	40,792	43,680
20700	Other Municipal Ports (Catanduanes)	177,800	189,405	159,624	189,377	272,205
41150	Masbate, Masbate	91,438	187,117	-	128,459	553,913
41700	Other Municipal Ports (Masbate)	-	-	-	11,324	51,924
41715	Cataingan Causeway/Pier	-	-	-	-	-
	Cataingan Masbate	70,127	34,139	-	22,373	95,794
62510	Bulan (Subport), Sorsogon	1,862	54,486	76,046	39,612	102,614
62700	Other Municipal Ports (Sorsogon)	144,657	192,627	217,735	155,228	213,245
62750	Matnog Causeway, Matnog, Sorsogon	529,581	1,275,272	1,325,583	664,029	1,665,008
VI - Western Visayas		3,117,581	2,763,315	4,058,244	3,835,142	4,320,594
04500	Other National Ports (Aklan)	-	198,418	894,075	843,626	801,197
04900	Other Private Ports (Aklan)	-	-	-	-	50,563
19520	Culasi, Roxas City, Capiz	18,262	20,198	18,086	16,814	718,268
30135	Iloilo, Iloilo City	375,778	359,352	390,638	357,492	7,821
30715	Dumangas, Guimaras, Iloilo	145,757	143,800	148,892	129,301	416,855
30900	Other Private Ports (Iloilo)	-	-	-	-	2,336
30972	R.J.L Slipway, Iloilo River Wharf, Iloilo Base Port, Iloilo	-	-	-	-	80,237
30975	Total Bulk Corporation (TBC), Lapuz, Iloilo	-	-	-	-	-
45160	Pulupandan, Negros Occidental	66,432	80,751	144,594	170,319	93,222
45500	Other National Ports (Negros Occidental)	-	-	7,316	41,426	56,036
45580	San Carlos City, Negros Occidental	567,382	435,681	507,989	509,786	472,949
45910	Bredco, Reclamation Area, Bacolod City, Negros Occidental	1,583,512	1,251,461	1,579,098	1,424,692	1,303,579
45958	Negros Nav. Incorporated Bo. Banago, Bacolod City	360,458	273,654	367,556	341,686	317,531

Table 13. - Continued

PORT CODE	Region and Port of Origin	2015	2016	2017	2018	2019
		(1)	(2)	(3)	(4)	(5)
VII - Central Visayas		5,202,696	6,918,605	5,690,881	5,799,991	6,984,958
12310	Tagbilaran City	442,566	552,112	672,490	518,068	591,621
12510	Jagna, Bohol	112,017	79,639	147,854	158,767	239,106
12770	Talibon Causeway, Bohol	40,712	55,455	56,809	49,893	57,189
12780	Tubigon Causeway/Pier, Bohol	87,897	74,371	222,648	176,628	235,378
12790	Ubay Causeway, Bohol	121,763	138,558	149,433	124,119	109,316
22110	Cebu City	3,200,309	3,140,432	2,635,060	2,381,088	2,694,882
46130	Dumaguete City	315,377	935,491	639,588	532,787	686,631
46700	Other Municipal Ports (Negros Oriental)	-	687,555	40,259	461,741	617,801
46720	Danao Escalante Public Wharf, Negros Or.	504,811	382,939	473,739	412,122	368,014
46730	Guihulngan, Negros Oriental	-	179,637	64,779	163,216	251,256
46770	Tampi, San Jose, Negros Oriental	-	-	-	230,864	396,977
46950	Matiao, Amlan, Negros Oriental	-	270,489	24,320	-	-
46980	Tandayag, Olman, Negros Oriental	-	18,103	-	-	-
61500	Other National Ports (Siquijor)	270,266	275,743	354,713	372,341	425,757
61740	Larena, Siquijor	106,978	127,166	209,189	218,357	311,030
61745	Lazi, Siquijor	-	915	-	-	-
VIII - Eastern Visayas		786,679	1,319,983	1,986,926	2,604,019	2,959,321
37560	Palompon, Leyte	105,810	91,540	97,977	75,053	88,314
37700	Other Municipal Ports (Leyte)	71,410	123,616	86,445	121,555	91,368
37710	Baybay Causeway / Pier, Baybay, Leyte	54,046	48,715	104,393	116,215	107,043
37730	Hilongos Causeway / Pier, Hilongos, Leyte	93,584	93,513	111,261	63,518	206,780
37753	Naval, Biliran, Leyte	-	-	2,059	18,477	19,274
37758	Ormoc, Ormoc City Causeway/Pier	297,139	390,049	502,794	618,265	592,097
48700	Other Municipal Ports (Northern Samar)	-	-	113,965	262,924	128,124
48900	Other Private Ports (Northern Samar)	-	-	373,343	800,091	1,118,740
60115	Catbalogan, Western Samar	5,076	3,509	-	562	637
60515	Calbayog, Western Samar	38,370	46,804	34,350	34,983	44,518
64175	Maasin, Southern Leyte	8,846	47,044	63,695	43,088	21,010
64500	Other National Ports (Southern Leyte)	112,398	475,193	496,644	449,288	541,416
IX - Zamboanga Peninsula		510,410	830,979	1,275,268	1,365,361	1,343,906
72765	Pulawan, Dapitan City, Zamboanga Del Norte	42,291	128,532	158,801	194,455	268,490
73195	Zamboanga, Zamboanga Del Sur	468,119	702,447	630,183	832,496	921,810
83310	Isabela Wharf, Isabela, Basilan	-	-	486,284	338,410	153,606
X - Northern Mindanao		730,848	749,087	1,708,598	1,469,055	1,539,245
35140	Iligan City, Lanao Del Norte	-	-	-	-	-
	Kolambugan, Lanao Del Norte	71,659	75,461	76,822	70,858	54,331
42160	Ozamis, Ozamis City	-	220,843	443,105	293,677	290,434
43110	Cagayan De Oro	287,206	41,680	516,887	364,521	406,888
43700	Other Municipal Ports (Misamis Oriental)	835	1,258	-	6,664	11,057
43715	Balbagon Port, Mambajao Camiguin	5,871	22,028	27,936	42,611	36,423
43720	Balingoan Causeway/Pier, Misamis Oriental	172,731	57,724	301,388	307,277	361,363
43725	Benoni Pier, Mahinog Camiguin	192,546	330,093	342,460	383,447	378,749

Table 13. - Concluded

PORT CODE	Region and Port of Origin	2015	2016	2017	2018	2019
		(2)	(3)	(4)	(5)	(1)
	XI - Davao Region	-	-	-	-	-
	XII - SOCCSKSARGEN	-	-	-	945	5,199
63150	Makar Wharf, Gen. Santos City South Cotabato	-	-	-	945	5,199
	XIII - Caraga	718,204	1,444,271	1,236,360	1,265,608	1,919,183
02150	Masao Gov'T. Pier, Lumbocan, Butuan City	47,801	-	57,189	2,802	72,502
02510	Butuan Government (R.C.) Wharf, Butuan City	-	-	-	-	-
02555	Nasipit Gov'T. (R.C.)Wharf, Nasipit	140,125	140,804	162,785	191,197	215,202
67170	Surigao City, Surigao Del Norte	146,675	467,724	648,674	747,319	1,029,059
67330	Dapa, Surigao Del Norte	72,505	183,301	26,022	16,558	306,473
67500	Other National Ports, Surigao Del Norte	213,036	441,253	194,405	146,270	1,516
67700	Other Municipal Ports, Surigao Del Norte	-	7,560	69,065	12,485	200,023
67705	Albor Causeway/Landing, Dinagat Island, Surigao Del Norte	-	-	3,514	-	-
67715	Cagdianao Causeway, Dinagat Island, Surigao del Norte	-	3,327	2,530	2,592	200
67718	Claver (Jayangabon), Mainland Surigao del Norte	1,566	3,624	15,369	16,187	3,165
67725	Del Carmen, Siargao Island Surigao Del Norte	22,033	49,333	9,323	3,592	58,568
67745	Loreto, Dinagat Island Surigao Del Norte	-	6,896	12,889	2,162	-
67770	San Jose, Bayagnan Island, Surigao del Norte	68,624	123,996	26,801	124,363	16,565
67773	Socorro, Bucas Grande Island, Surigao del Norte	-	-	701	81	25
67776	Sta. Monica, Siargao Island, Surigao del Norte	5,839	16,408	7,088	-	15,885
67934	Hinatuan, Tagana-An, Surigao del Norte	-	45	5	-	-
	BARMM	219,915	325,329	268,294	170,233	285,022
07745	Lamitan, Basilan Province	150,838	226,654	226,879	170,233	105,583
38160	Polloc, Cotabato	-	-	-	-	-
66140	Jolo, Sulu	-	12,235	951	-	-
70310	Bongao, Tawi-Tawi	58,989	71,573	34,720	-	179,439
70370	Sitangkai, Tawi-Tawi	10,088	14,867	5,744	-	-

(-) means no transaction
Source: Philippine Statistics Authority

GLOSSARY OF TERMS

Domestic commodity flow refers to the flow of commodities through the water, air and rail transport system in the country.

Trade balance is the difference between outflow and inflow, that is outflow minus inflow. A positive value indicates a favorable trade balance, while a negative value indicates an unfavorable trade balance.

Inflow refers to the total value of commodities coming into a specified region/province.

Outflow refers to the total value of commodities coming out from a specified region/province.

Port/Station of origin refers to the port or station where the cargoes originally came from.

Port/Station of destination refers to the port or station where the cargoes are destined for.

Region of origin refers to the regional location of the port or station where the cargoes originally came from.

Region of destination refers to the regional location of the port or station where the cargoes are destined for.

Freight refers to charges on cargoes paid for the transportation of goods for one port or station to another.

Value refers to the peso equivalent of a particular commodity.

Quantity or Weight refers to the total amount or volume of a particular commodity.

Dry bulk are commodities that are unpacked and handled in mass. They come in solid and pulverized forms requiring huge container vessels.

Liquid bulk or semi-liquid are commodities that are unpacked and handled in mass. They come in liquid and semi-liquid forms requiring huge container vessels.

Break bulk are commodities that come in packages, bales, bundles, crates, cartons, or any form whereby the handling of any single unit can be done conveniently by one or two men.

Containerized refers to homogenous or non-homogenous cargoes in solid, pulverized, semi-liquid, liquid, or gaseous and / or break bulk pre-slung / bundled or palletized form of any convenient practical combination thereof which are arranged in a steel closed or open box called container handled as a unit.

APPENDICES

Passenger Manifest

PASSENGER MANIFEST

(To be accomplished for each voyage of the ship)

Name of Ship	Voyage Route/Link:
Name of Company/Operator:	Date/ Voyage Number:

Total Number of Persons Authorized (Passengers/Crew/Ancillaries/Supernumeraries/Others): _____

Name of Passenger	Passenger's Child Companion (If any)	Accommodation Type (1 st , 2 nd , 3 rd)	Sex	Age	Address	Port of Embarkation	Port of Disembarkation
1.							
2.							
3.							
4.							
5.							
6.							
7.							
8.							
9.							
10.							
11.							
12.							
13.							
14.							
15.							
16.							
17.							
18.							
19.							
20.							
21.							
22.							
23.							
24.							
25.							
26.							
27.							
28.							
29.							
30.							
31.							
32.							
33.							
34.							
35.							
36.							
37.							
38.							
39.							
40.							
41.							
42.							
43.							
44.							
45.							
46.							
47.							
48.							
49.							
50.							

Form No. ____

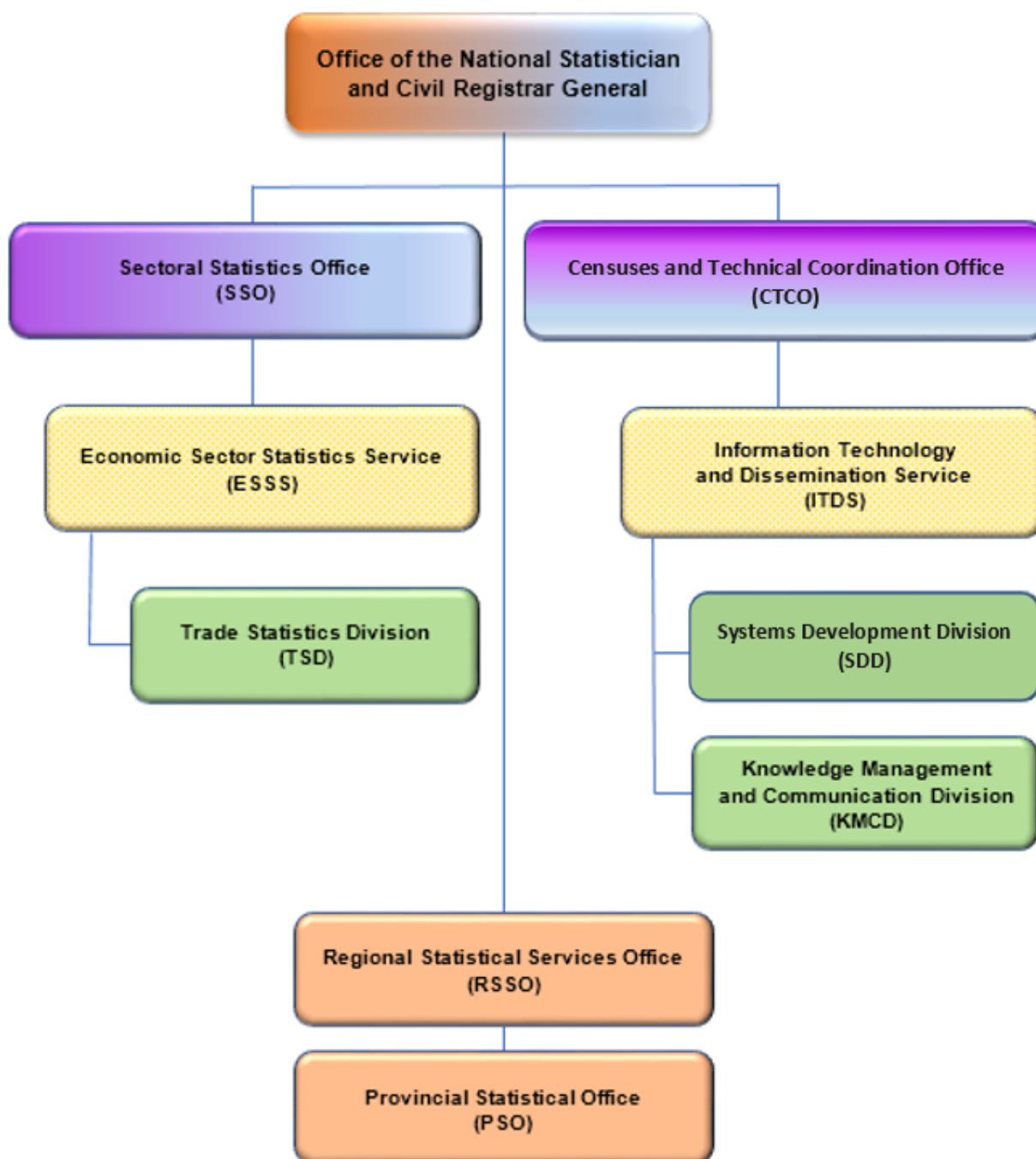
PROCESSING SHEET FOR COASTWISE TRADE

Domestic Trade: _____ PMU: _____ Year: _____ Bundle No.: _____
 Origin: _____ Pier Zone: _____ Month: _____ Sheet No.: _____

Cargo Particulars

	Control No.	Destination	Area of Occupancy	Type of Handling	Commodity Sequence No.	Commodity Code	Weight (Kg.)	Value (Pesos)	Freight Charges
01									
02									
03									
04									
05									
06									
07									
08									
09									
10									
11									
12									
13									
14									
15									
16									
17									
18									
19									
20									
21									
22									
23									
24									
25									

PSA Organizational Structure in the Domestic Trade Statistics Compilation



For Inquiries:

PHILIPPINE STATISTICS AUTHORITY

PSA CVEA Building, East Avenue, Diliman, Quezon City, Philippines 1101

Tel. No. +63(2) 84626600 loc. 834/839 = Telefax No. +63(2) 84626600 loc. 833

E-mail address: info@psa.gov.ph • kmcd.staff@psa.gov.ph



Visit us at
www.psa.gov.ph



Like us on Facebook
[/PhilippineStatisticsAuthority](https://www.facebook.com/PhilippineStatisticsAuthority)



Like us on Twitter
[@PSAgovph](https://twitter.com/PSAgovph)