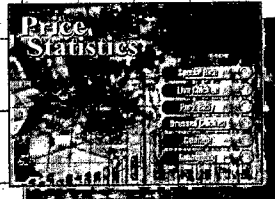
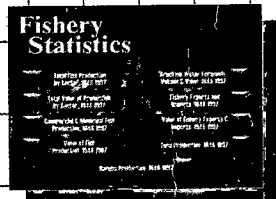
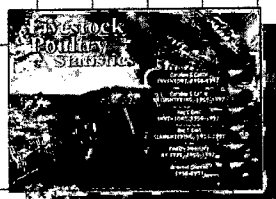
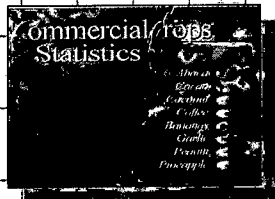
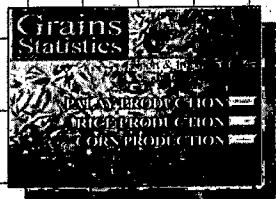


Selected Statistics on Agriculture

June 2001



Bureau of Agricultural Statistics
Department of Agriculture



BAS LIBRARY

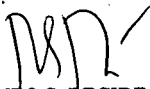
FOREWORD

This handbook *on Selected Statistics on Agriculture* is the 12th issue of updated five-year data series of selected macroeconomic indicators for the agriculture sector and statistics on crops, livestock, poultry, fisheries, trade and prices. Data for a few commodities in the previous issues were revised to reflect results of data review and validation activities and latest available information.

The revisions include the changes on data on coconut, mango, abaca, cassava, camote and cabbage. For coconut, the revisions reflect the results of the BAS-PCA Coconut Production Survey and the subsequent data review and validation activities. Revisions of the rest of the aforementioned crops were results of similar activities conducted under the Key Commercial Crops Development Program (KCCDP).

For fisheries, the estimated production of top fifteen (15) marine species for the past five years are now included in this issue.

We hope that this handbook will be useful in the formulation of policies and programs towards a sustainable agriculture modernization for the entire country.



ROMEO S. RECIDE
Director

ACKNOWLEDGEMENT

Our appreciation and gratitude go to the following agencies for their cooperation and support in sharing with us their data: Agricultural Credit and Policy Council (ACPC), Asian Development Bank (ADB), Bureau of Animal Industry (BAI), Bangko Sentral Ng Pilipinas (BSP), Department of Budget and Management (DBM), Development Bank of the Philippines (DBP), Food and Agricultural Organization (FAO), Fertilizer and Pesticide Authority (FPA), National Food Authority (NFA), National Irrigation Administration (NIA), National Statistical Coordination Board (NSCB), National Statistics Office (NSO), Philippine National Bank (PNB), and Sugar Regulatory Administration (SRA).

We also wish to thank the High Value Commercial Crops – Agrikulturang MakaMASA (HVCC-AM) Project Directorate for providing funding support for the conduct of objective surveys and data validation activities for high value commercial crops. These activities have helped raise the level of our confidence that the new estimates are now at more accurate levels.

CONTENTS

	Page/s
FOREWORD	iii
ACKNOWLEDGEMENT	iv
CONTENTS	v
EXPLANATORY NOTES	vi
Recent Developments in the Philippine Agriculture Sector: An Overview	1
Selected Macroeconomic and Agriculture Sector Statistics	3
Summary: Agricultural Production	9
Summary: Agricultural Crop Area	13
Summary : Value of Production	14
Rice: Supply-Use and Related Statistics	17
Corn: Supply-Use and Related Statistics	19
Selected Livestock and Poultry Statistics	21
Foreign Agricultural Trade Statistics	22
Selected Price Statistics	28

EXPLANATORY NOTES

1. Unless otherwise indicated, year refers to calendar year.
2. As a rule, figures from source publications are copied to the extent possible. In some instances, however, figures were rounded-off or combined.
3. Figures may not add up to the totals due to the rounding-off.
4. The following symbols and abbreviations are used in the tables:

---	Data not yet available
-	None
R	Revised
P	Preliminary
MT	Metric Ton
HA	Hectare
KG	Kilogram
GNP	Gross National Product
GVA	Gross Value Added
SSLA	Stock Savings and Loan Association
BOP	Balance of Payments

5. Sources of data are the following:

ACPC	- Agricultural Credit and Policy Council
ADB	- Asian Development Bank
BAI	- Bureau of Animal Industry
BAS	- Bureau of Agricultural Statistics
BFAR	- Bureau of Fisheries and Aquatic Resources
CB	- Central Bank
DBM	- Department of Budget and Management
DBP	- Development Bank of the Philippines
FAO	- Food and Agriculture Organization
FPA	- Fertilizer and Pesticide Authority
FIDA	- Fiber Industry Development Authority
NFA	- National Food Authority
NIA	- National Irrigation Administration
NSCB	- National Statistical Coordination Board
NSO	- National Statistics Office
PhilCotton	- Philippine Cotton Corporation
SRA	- Sugar Regulatory Administration

AN OVERVIEW OF THE PHILIPPINE AGRICULTURAL ECONOMY

Economic performance. Over the last decade, the gross domestic product (GDP) of the Philippines grew by an average of 2.87 percent and the agriculture sector went along with an average growth rate of 2.16 percent. In year 2000, the economy fared better and so did agriculture with 3.50 percent growth. The years saw the declining share of agriculture to the GDP and by 2000, the sector's contribution was down to 19.83 percent. In terms of output shares, the decade averages by subsector were 55 percent from crops, 26 percent from livestock and poultry and 19 percent from fishery.

Population, employment and wages. In year 2000, the country's population stood at 76.5 million persons. About 40 percent of them were dependent on agriculture for their livelihood. The agriculture employed an average of 10.9 million persons in the last 10 years and about 25 percent of them came from the female working force. Agricultural employment was decreasing, albeit slow at the rate of 0.05 percent. Its share to total employment was likewise going down; from about 45 percent in the early 90s, the sector's share dropped to 37 percent in 2000. Available indicators showed the increasing trend in wages paid by farm households. In the first half of 2000, average daily wage rates, in nominal terms were P140.63 for palay farm workers and P117.90 for corn farm workers.

Exports and imports. The past decade saw the fast declining share of agriculture to total exports. From a considerable 20.87 percent, the share dipped to about 5.0 percent in 2000. On the other hand, agricultural imports accounted for 9.0 to 11.0 percent of the country's total imports. From 1994 onwards, the sector's exports lagged behind its imports. On the average, agricultural exports expanded by a measly 1.46 percent and agricultural imports, by 9.57 percent over the last 10 years.

Food self-sufficiency. The country has been consistently relying on importation to supplement domestic production of staple food items namely, rice, corn, pork and chicken. To wit, the country's self-sufficiency ratio for rice averaged 92.93 percent for the last decade and for corn, 97.4 percent. In the case of pork, chicken and egg, import dependency was less than one percent.

Prices. From 1991 to 2000, average prices received by agricultural producers had moved up by 5.5 percent. Last year's performance, however was characterized by a relative weakening of prices with farmgate prices inching up by merely 1.28 percent. Farmers had to contend with the faster increment in the prices of consumer goods. Consumer prices recorded a 10 - year average increase of 7.5 percent and in 2000, 4.39 percent.

Inputs and other farm support systems. There was no discernible trend or pattern in fertilizer supply of the country. Domestic production accounted for 37 to 60 percent of total supply. Last year, 45.6 percent of total fertilizer supply were domestically produced and the rest were imported.

Irrigation support has not been extensive in terms of covering potential irrigable area. Over the last decade, the ratio of service area to potential irrigable area has not crossed the 50 percent mark.

Meanwhile, based on the ratio of agricultural loans to total loans granted as an indicator, credit support to agriculture has not expanded. The ratio, 4.90 percent in 1991 was contracting through the years.

In terms of budgetary support to the sector during the last 10 years, about three to five percent of total national government expenditures went to agriculture. In 2000, agricultural expenditures at P30,016 million accounted for 4.62 percent of total expenditures.

SELECTED MACROECONOMIC AND AGRICULTURE SECTOR STATISTICS

ITEM	1996	1997	1998R	1999R	2000P
GNP (MILLION PESOS) 1/	884,226	930,363	934,386	968,556	1,009,351
GROWTH RATE (%)	7.24	5.22	0.43	3.66	4.21
GDP (MILLION PESOS)	849,121	892,860	887,905	917,382	953,582
GROWTH RATE (%)	5.85	5.15	-0.55	3.32	3.95
GVA IN AGRICULTURE 2/ (MILLION PESOS)	177,553	183,601	171,734	182,659	189,056
AGRICULTURE SECTOR GROWTH RATE (%)	3.79	3.41	-6.46	6.36	3.50
Crops	3.38	3.69	-12.76	10.40	3.82
Livestock	6.60	5.34	3.37	4.50	3.07
Poultry	11.27	6.84	0.64	0.96	5.39
Fishery	-0.48	-0.04	0.98	1.94	1.70
Agricultural Activities & Services	5.11	1.96	-3.95	-0.46	4.37
POPULATION 3/ (MILLION PERSONS)					
PHILIPPINES	69.95	71.55	73.15	74.74	76.50
Male	35.25	36.05	36.85	37.65	----
Female	34.70	35.50	36.30	37.09	----
EMPLOYMENT IN AGRICULTURE 4/ (MILLION PERSONS)	11.64	11.31	10.93	10.77	10.18
WAGE RATE INDICES 5/ IN AGRICULTURE (WITHOUT MEAL)					
Nominal	125.60	140.00	151.70	162.90	170.00 a/ 159.30 b/
Real	106.60	112.30	110.80	111.60	113.50 a/ 106.30 b/
OFFICIAL EXCHANGE RATE 6/	26.22	29.47	40.89	39.10	44.19
INFLATION RATE 7/	9.1	5.9	9.7	6.6	4.4
PURCHASING POWER OF PESO 7/	0.85	0.80	0.73	0.68	0.66

NOTE: See footnote content at end of table on page 8.

SELECTED MACROECONOMIC AND AGRICULTURE SECTOR STATISTICS
(Continued)

ITEM	1996	1997	1998R	1999R	2000P
AGRICULTURAL EXPENDITURES (MILLION PESOS)	15,479	23,854	17,354	26,847	30,016
TOTAL NATIONAL GOV'T. EXPENDITURES 8/ (MILLION PESOS)	416,139	491,784	537,433	580,385	649,484
AGRICULTURAL EXPENDITURES TO TOTAL NATIONAL GOV'T. EXPENDITURES RATIO (%)	3.72	4.85	3.23	4.63	4.62
FERTILIZER (ALL GRADES)					
Total Supply 9/ (⁰⁰⁰ MT)	2,815.3	2,568.0	1,968.7	2,390.1	2,315.3
Production	1,607.4	1,321.9	1,181.3	1,167.7	1,055.4
Production to Total Supply Ratio (%)	57.1	51.5	60.0	48.9	45.6
Import	1,207.9	1,246.1	787.4	1,222.4	1,259.9
Import to Total Supply Ratio (%)	42.9	48.5	40.0	51.1	54.4
IRRIGATION					
Irrigation Service Area 10/ (Million HA)	1.32	1.34	1.34	1.35	1.36
Irrigation Service Area to Total Potential Irrigable Area Ratio (%)	42.31	42.72	42.82	43.19	43.55

NOTE: See footnote content at end of table on page 8.

SELECTED MACROECONOMIC AND AGRICULTURE SECTOR STATISTICS
(Continued)

ITEM	1960	1971	1980	1991
NUMBER OF FARMS (Million Farms)				
ALL FARMS	2.17	2.35	3.42	4.61
Under 1.00 ha.	0.25	0.32	0.78	1.68
1.00 to 2.99 ha.	1.10	1.12	1.58	1.96
3.00 to 4.99 ha.	0.40	0.56	0.59	0.52
5.00 to 9.99 ha.	0.29	0.24	0.36	0.32
10.00 ha. & over	0.12	0.12	0.12	0.10
AREA BY SIZE (Million Has.)				
ALL FARMS	7.77	8.49	9.73	9.97
Under 1.00 ha.	0.12	0.16	0.37	0.72
1.00 to 2.99 ha.	1.80	1.89	2.52	3.03
3.00 to 4.99 ha.	1.43	2.01	2.07	1.84
5.00 to 9.99 ha.	1.85	1.55	2.24	2.04
10.00 ha. & over	2.58	2.88	2.52	2.32
AREA BY LAND CLASS (Million Has.)				
Temporary Crops	3.7	3.8	4.3	5.3
Idle	1.1	0.7	0.8	0.1
Permanent Crops	1.8	2.5	3.5	4.2
Meadows and Pastures	0.3	0.6	0.5	0.1
Covered with Forest Brown	0.5	0.4	0.3	0.1
All Other Lands	0.1	0.1	0.1	0.1

**AVERAGE COSTS AND RETURNS OF PALAY PRODUCTION,
BY FARM TYPE, PHILIPPINES, 2000 P**

(Pesos Per Hectare)

ITEM	ALL TYPES	IRRIGATED	NON- IRRIGATED
Gross Returns	25,853	29,214	18,710
Cash Cost	9,132	10,362	6,301
Non-Cash Cost	5,615	7,097	2,200
Imputed Cost	6,987	7,401	6,106
Total Cost	21,733	24,861	14,606
Net Returns	4,119	4,353	4,104
Net Profit Cost Ratio	0.19	0.18	0.28

**AVERAGE COSTS AND RETURNS OF CORN PRODUCTION,
BY VARIETY, PHILIPPINES, 2000 P**

(Pesos Per Hectare)

ITEM	ALL TYPES	WHITE CORN	YELLOW CORN
Gross Returns	12,672	8,359	17,963
Cash Cost	3,432	2,578	4,610
Non-Cash Cost	1,511	1,296	1,804
Imputed Cost	4,091	3,888	4,371
Total Cost	9,033	7,762	10,786
Net Returns	3,639	597	7,177
Net Profit Cost Ratio	0.40	0.08	0.67

SELECTED MACROECONOMIC AND AGRICULTURE SECTOR STATISTICS
(Continued)

ITEM	1996	1997	1998	1999R	2000P
AGRICULTURAL PRODUCTION LOANS GRANTED BY COMMODITY 11/ (MILLION PESOS)					
FOOD ITEMS	52,364.2	50,352.6	51,746.0	53,326.6	59,381.9
Cereals	9,722.5	9,948.5	12,067.1	11,477.5	11,931.6
Rice	9,015.8	9,216.9	11,133.2	10,609.7	10,968.9
Corn	677.9	610.0	812.9	741.0	755.6
Sorghum	2.0	23.8	5.9	15.7	39.1
Soybean & Other	26.7	97.8	115.1	111.0	168.0
Feedgrains					
Fruits, Vegetables & Rootcrops	3,077.0	7,409.9	7,925.4	8,006.1	9,182.3
Livestock and Poultry	31,936.9	27,067.6	16,805.0	23,042.2	26,436.0
Fisheries	7,627.8	5,926.8	14,948.5	10,800.8	11,832.1
EXPORT & COMMERCIAL CROPS	13,383.9	9,362.0	16,104.5	13,226.3	15,102.4
Abaca & Other Fibers	657.6	1,593.9	789.8	1,254.8	1,480.1
Coconut	4,022.8	2,289.7	3,884.9	3,207.3	3,382.2
Coffee and Cacao	725.6	361.5	674.4	537.5	630.6
Cotton	580.3	146.4	32.2	94.7	120.5
Rubber	131.3	170.9	46.6	115.1	132.2
Sugarcane	7,173.3	3,828.2	10,412.2	7,362.9	8,055.8
Tobacco	93.0	971.6	264.4	654.0	1,301.0
FORESTRY	156.0	2,086.6	1,525.1	1,893.6	4,088.0
OTHERS	13,423.3	16,558.0	9,995.0	13,614.0	15,640.0
SUB-TOTAL	79,327.4	78,359.2	79,370.6	82,060.5	94,212.3
SSLA LOANS	12,030.5	12,165.8	5,862.9	9,883.5	13,930.5
SMB LOANS			4,168.2	5,361.3	6,534.5
PDB LOANS			5,280.1	6,206.1	6,912.2
GRAND TOTAL	91,357.9	90,525.0	94,681.8	103,511.4	121,589.4

SELECTED MACROECONOMIC AND AGRICULTURE SECTOR STATISTICS
(Continued)

ITEM	1996	1997	1998	1999R	2000P
AGRICULTURAL LOAN TO OUTPUT (GVA) RATIO (%)	20.40	20.00	21.05	19.78	22.17
TOTAL LOANS (BILLION PESOS, AT CURRENT PRICES)	10,656.95	10,167.53	12,086.56	13,742.55	21,231.09
AGRICULTURAL LOAN TO TOTAL LOANS GRANTED RATIO (%)	0.86	0.89	0.78	0.75	0.57

1/ At constant 1985 prices.

2/ Gross Value Added (GVA) in Agriculture and Fisheries.

3/ 1996-1999 data on population were mid-year projections based on 1995 CPH. 2000 population is from 2000 CPH; no male and female disaggregation.

4/ Data from January 1999 to July 2000 have been revised by the NSO due to shift of population projection benchmark in the LFS series from 1980-based Census of Population to the 1995-based Census of Population.

5/ Base year (1994) average agricultural wage per day = P80.55; 2000 indices consider only the first semester wage rates for palay (a) and corn (b).

6/ As per Bankers Association of the Philippines (BAP) reference note, BSP.

7/ Base Year for CPI is 1994.

8/ Based on sectoral revised classification, Department of Budget and Management. 1996- 1999 Actual Obligated Expenditures; Adjusted Agricultural Expenditures for 2000, Budget of Expenditures and Sources of Financing Yearbook, Fiscal Year 2001.

9/ Total of local production and imports.

10/ Irrigation service area refers to area that is presently provided with irrigation and drainage facilities and where irrigation and drainage services could readily be rendered.

11/ Sourced from ACPC.

R - Revised

P - Preliminary

— Data not available

SUMMARY: AGRICULTURAL PRODUCTION

ITEM	1996	1997	1998	1999	2000 P
CROPS ('000 MT)	69,128.5	68,301.4	57,931.5	68,124.6	68,112.1
A. CEREALS	15,434.9	15,601.4	12,378.0	16,371.2	16,900.5
Palay	11,283.6	11,269.0	8,554.8	11,786.6	12,389.4
Corn	4,151.3	4,332.4	3,823.2	4,584.6	4,511.1
B. MAJOR CROPS	44,460.4	46,223.0	39,558.2	46,146.4	46,007.0
Coconut 1/	11,936.7	13,707.8	12,806.4	12,504.0	12,499.1
Sugarcane	23,142.2	22,273.1	17,333.4	23,777.8	23,518.5
Banana	3,311.8	3,773.8	3,492.6	3,869.2	4,155.7
Pineapple	1,542.2	1,638.0	1,488.6	1,530.0	1,523.8
Coffee	119.0	130.0	122.2	117.4	117.0
Mango 2/ -	787.2	990.2	994.0	866.2	855.4
Tobacco	64.9	65.3	62.0	51.7	49.5
Abaca	70.4	67.1	71.2	73.1	77.7
Rubber	192.7	221.3	222.8	214.6	185.5
Cacao	7.9	7.8	7.4	7.7	6.6
Cassava 2/ -	1,910.8	1,958.0	1,733.8	1,890.3	1,770.8
Camote 2/ -	654.2	631.4	554.7	557.4	554.0
Peanut	33.5	25.8	24.7	25.8	25.7
Mongo	26.8	27.5	28.5	29.2	27.4
Onion	83.3	85.4	87.0	85.0	84.3
Garlic	18.6	20.2	12.8	9.3	13.7
Tomato	162.6	166.4	133.0	145.4	148.1
Eggplant	157.6	195.0	163.8	159.7	166.1
Cabbage 2/	98.1	95.9	85.8	87.5	87.6
Citrus 3/	139.9	143.0	133.5	145.1	140.5
C. OTHER CROPS 2/	9,233.2	6,477.1	5,995.3	5,607.0	5,204.6
Other fibercrops	10.1	7.2	6.2	6.0	6.0
Other rootcrops	286.4	288.2	220.8	204.7	203.7
Tubers	50.2	49.5	47.3	49.3	49.7
Spices	66.0	64.9	57.2	60.1	62.6
Fruit bearing Vegetables	303.3	315.3	278.5	292.6	285.9
Leafy/Stem Vegetables	186.0	189.8	174.3	178.8	181.7
Other Legumes	56.3	55.1	50.5	53.7	51.7
Other Fruits	587.1	720.2	687.0	548.1	543.9
Others	7,687.8	4,786.9	4,473.5	4,213.7	3,819.4

Note: See footnote content at end of table on page 12.

SUMMARY: AGRICULTURAL PRODUCTION (Continued)

ITEM	1996	1997	1998	1999 R	2000 P
D. LIVESTOCK					
TOTAL PRODUCTION					
(LIVEWEIGHT, '000 MT)	1,709.7	1,796.5	1,861.7	1,940.6	1,999.1
Carabao	99.2	106.1	113.1	119.0	124.0
Cattle	232.3	251.5	260.8	271.2	271.9
Hog	1,296.5	1,357.8	1,406.6	1,466.7	1,517.8
Goat	70.2	70.9	72.0	73.9	75.2
Dairy 3/	11.5	10.2	9.2	9.8	10.2
POULTRY					
TOTAL PRODUCTION					
('000 MT)	902.8	980.5	970.7	980.4	1,039.0
Chicken	851.8	929.7	919.4	929.2	987.5
Duck	51.0	50.8	51.3	51.2	51.5
EGG PRODUCTION					
	260.1	275.9	280.1	282.5	296.9
Chicken	205.6	222.9	227.0	229.9	243.4
Duck	54.5	53.0	53.1	52.6	53.5
E. FISHERY					
TOTAL PRODUCTION					
('000 MT)	2,769.2	2,766.7	2,786.3	2,875.9	2,936.8
Commercial 4/	879.1	884.7	940.5	948.8	946.5
Municipal	909.2	924.4	891.2	926.3	945.9
Aquaculture	980.9	957.6	954.6	1,000.8	1,044.4

Note: See footnote content at end of table on page 12.

SUMMARY: AGRICULTURAL PRODUCTION

ITEM	1996	1997	1998	1999 R	2000 P
FISHERY					
TOTAL PRODUCTION					
('000 MT)	2,769.2	2,766.7	2,786.3	2,875.9	2,936.8
Commercial	879.1	884.7	940.5	948.8	946.5
Municipal	909.2	924.4	891.2	926.3	945.9
Marine	731.3	764.7	744.7	779.8	793.8
Inland	177.9	159.7	146.5	146.5	152.1
Aquaculture	980.9	957.6	954.6	1,000.8	1,044.4
Brackishwater Fishpond	225.3	198.9	188.8	207.7 *	236.0 *
Freshwater Fishpond	43.7	42.8	35.3	39.7	45.9
Freshwater Fishpen	16.2	20.0	21.9	30.1	27.5
Marine Fishpen	0.1	0.2	5.0	6.0	6.2
Freshwater Fishcage	31.3	42.7	29.7	35.2	38.3
Marine Fishcage	0.1	0.3	2.6	2.9	2.9
Mariculture					
Oyster	11.8	13.9	13.2	14.7	14.1
Mussel	21.0	11.7	15.5	15.6	16.9
Seaweed	631.4	627.1	642.6	648.9	656.6
TOP AQUA SPECIES					
('000 MT)					
Seaweeds	631.4	627.1	642.6	648.9	656.6
Milkfish	150.2	161.4	162.4	180.7	204.5
Tilapia	79.4	91.8	72.0	83.5	92.3
Tiger Prawn	76.2	40.1	36.8	37.9	40.3
Mussel	21.0	11.7	15.5	15.6	16.9
Oyster	11.8	13.9	13.2	14.7	14.1
Carp	2.0	1.9	4.8	10.6	10.7
Mudcrab	2.4	3.7	4.0	4.8	4.9
Mudfish	2.1	2.1	1.3	1.3	1.3
Catfish	1.1	1.1	0.7	1.1	0.9

Note: See footnote content at end of table on page 12.

SUMMARY: AGRICULTURAL PRODUCTION (Continued)

ITEM	1996	1997	1998	1999	2000 P
TOP MARINE SPECIES					
('000 MT)					
Roundscad	223.9	228.9	245.1	248.5	256.0
Indian sardines	141.4	192.2	194.1	179.3	200.5
Skipjack	110.0	110.1	116.7	108.8	113.0
Frigate tuna	89.0	108.5	106.4	111.3	112.2
Fimbriated sardines	111.5	104.6	102.7	94.6	92.9
Yellowfin and bigeyed tuna	61.3	67.3	79.2	90.4	90.3
Anchovies	71.5	78.7	77.0	78.1	79.6
Bigeyed scad	43.7	54.2	62.0	65.8	71.4
Slipmouth	57.9	61.3	59.9	68.4	67.3
Indian mackerel	45.4	53.2	50.2	51.7	53.7
Squid	52.5	54.2	48.7	47.1	46.8
Blue crabs	27.7	30.4	23.9	34.1	36.3
Threadfin breams	32.9	29.8	30.5	29.3	29.5
Indo-pacific mackerel	25.2	23.0	23.4	25.7	26.8
Goatfish	23.7	15.9	14.2	14.5	14.7

1/ Revised data based on an objective survey and data review and validation under the Key Commercial Crops Development Program.

2/ Includes calamansi, mandarin, orange, pomelo, lemon and lime.

3/ Revised data based on the result of the 1996 Listings of Dairy Farms/Enterprises.

4/ Revised based on data review and change of the characteristics of one sample landing center.

* Include brackishwater fishcage.

R - Revised

P - Preliminary, except for palay and corn.

SUMMARY: AGRICULTURAL CROP AREA

ITEM	1996	1997	1998	1999	2000P
HARVEST AREA ('000 HA)	13,015.6	13,024.7	11,664.6	13,074.4	12,891.6
A. CEREALS	6,686.8	6,568.2	5,524.2	6,642.0	6,548.4
Palay	3,951.1	3,842.3	3,170.0	3,999.8	4,038.1
Corn	2,735.7	2,725.9	2,354.2	2,642.2	2,510.3
B. MAJOR CROPS	5,133.7	5,269.8	5,476.1	5,888.2	5,858.7
Coconut 1/	3,300.7	3,441.8	3,731.3	4,090.6	4,089.9
Sugarcane	395.6	375.2	343.6	375.3	372.1
Banana	326.9	338.4	327.6	342.4	348.0
Pineapple	45.0	40.4	37.7	37.4	43.4
Coffee	151.2	150.1	148.4	136.5	136.5
Mango 2/	117.4	124.9	129.8	132.2	133.9
Tobacco	54.2	51.1	48.5	47.3	40.8
Abaca 2/	116.8	112.5	106.3	108.9	109.2
Rubber	90.0	92.9	93.1	91.5	76.8
Cacao	15.9	15.1	15.0	15.0	11.1
Cassava 2/	228.3	230.5	215.3	223.6	210.7
Camote 2/	141.0	141.7	130.4	132.3	128.2
Peanut	28.7	26.6	25.4	27.2	26.7
Mongo	35.5	36.4	37.7	39.2	40.2
Onion	9.8	11.9	12.8	9.6	9.6
Garlic	6.3	7.9	5.2	3.8	5.2
Tomato	16.9	17.1	14.9	16.8	16.1
Eggplant	18.1	19.0	16.0	19.4	20.0
Cabbage 2/	8.0	7.9	7.5	7.6	7.7
Citrus 3/	27.4	28.4	29.6	31.6	32.6
C. OTHER CROPS 2/	1,195.1	1,186.7	664.3	544.2	484.5
Other fibercrops	8.5	5.0	4.8	5.4	5.8
Other Rootcrops	43.9	42.1	36.4	34.8	34.5
Tubers	5.1	5.0	5.0	5.2	5.4
Spices	13.7	14.0	12.9	13.8	14.6
Fruit bearing Vegetabl	29.3	30.6	27.9	29.9	29.9
Leafy/Stem Vegetables	16.3	17.0	16.3	17.1	17.6
Other Legumes	20.2	20.0	18.3	18.8	17.6
Other Fruits	116.5	119.0	121.8	124.6	125.1
Others	941.6	934.0	420.9	294.6	234.0

1/ Revised based on BAS-PCA Coconut Production Survey

2/ Revised data based on an objective survey and data review and validation under the Key Commercial Crops Development Program.

3/ Includes calamansi, mandarin, orange, pomelo, lemon and lime.

P - Preliminary, except for palay and corn

SUMMARY: VALUE OF PRODUCTION

ITEM	1996	1997	1998	1999	2000P
AGRICULTURAL CROPS (MILLION PESOS, AT CURRENT PRICES)	270,015.0	276,826.1	264,092.2	309,015.6	291,955.7
A. CEREALS	118,388.4	115,824.7	90,609.2	118,395.3	135,331.2
Palay	91,284.1	88,010.6	69,123.0	92,171.4	105,557.9
Corn	27,104.3	27,814.1	21,486.2	26,223.9	29,773.3
B. MAJOR CROPS	108,682.7	121,977.2	135,131.6	150,940.3	116,076.1
Coconut 1/	28,767.5	33,447.1	44,438.1	47,515.3	26,123.0
Sugarcane 2/	16,662.4	15,368.4	14,213.4	18,280.2	16,463.0
Banana	13,710.9	16,642.5	17,288.3	22,828.1	19,365.4
Pineapple	7,418.0	11,285.8	10,301.7	9,899.4	10,392.3
Coffee	5,009.5	5,173.9	6,800.4	6,008.5	4,410.9
Mango 3/	13,933.0	15,440.1	17,845.3	19,736.9	16,037.4
Tobacco	1,668.2	3,800.5	3,033.1	3,768.6	2,418.6
Abaca	1,262.8	1,208.0	1,309.7	1,498.2	1,398.6
Rubber	2,081.2	1,863.4	1,786.5	1,396.8	1,504.4
Cacao	215.9	205.1	250.3	251.3	208.9
Cassava 3/	6,764.2	6,383.1	6,553.8	6,672.8	6,764.5
Camote 3/	2,826.3	2,999.2	2,923.2	2,686.6	2,603.8
Peanut	439.7	402.4	390.8	392.3	441.4
Mongo	645.6	635.1	667.4	730.5	561.4
Onion	1,443.1	1,142.7	1,743.1	3,241.5	1,318.5
Garlic	1,547.8	946.2	661.1	920.2	979.9
Tomato	762.8	1,038.3	1,131.7	1,359.1	1,181.6
Eggplant	1,413.7	1,780.4	1,212.3	1,667.7	1,624.5
Cabbage 3/	702.2	759.1	1,104.8	775.0	698.7
Citrus 4/	1,407.9	1,455.9	1,476.6	1,311.2	1,579.2
C. OTHER CROPS 3/	42,943.9	39,024.2	38,351.4	39,680.0	40,548.4
Other fibercrops	311.3	224.5	194.5	196.0	220.5
Other Rootcrops	3,705.6	3,475.4	3,682.8	3,554.2	2,959.6
Tubers	705.3	591.1	737.6	723.9	603.2
Spices	1,192.2	1,904.4	2,427.5	1,635.1	1,697.5
Fruit bearing Vegetable	1,575.6	2,012.6	1,721.6	2,342.8	2,225.2
Leafy/Stem Vegetable	1,796.8	1,437.5	1,389.7	1,384.0	1,433.7
Other Legumes	761.4	841.5	912.1	1,016.1	1,106.3
Other Fruits	7,441.0	8,943.6	8,304.8	7,571.1	8,170.4
Others	25,454.7	19,593.6	18,980.8	21,256.8	22,132.0

1/ Revised based on BAS-PCA Coconut Survey.

2/ Revised based on validated farm price of cane.

3/ Revised based on data review and validation.

4/ Includes calamansi, mandarin, orange, pomelo, lemon and lime.

P - Preliminary

SUMMARY: VALUE OF PRODUCTION (Continued)

ITEM	1996	1997	1998	1999 R	2000 P
D. LIVESTOCK					
(LIVEWEIGHT, CURRENT PRICE IN MILLION PESOS)					
	77,650	84,345	86,207	94,087	100,603
Carabao	3,222	3,620	3,701	4,097	4,732
Cattle	10,128	11,485	11,249	11,813	13,730
Hog	61,530	66,273	68,206	74,727	78,682
Goat	2,653	2,849	2,936	3,325	3,321
Dairy	117	118	116	126	138
POULTRY					
(LIVEWEIGHT, CURRENT PRICE IN MILLION PESOS)					
	53,673	61,528	66,216	66,280	73,572
Chicken	40,095	46,577	49,733	48,707	55,704
Duck	2,632	2,598	2,569	2,683	2,760
Chicken Egg	8,789	10,239	11,513	12,400	12,877
Duck Egg	2,157	2,114	2,401	2,490	2,231
E. FISHERY					
TOTAL VALUE (MILLION PESOS)					
	83,134.7	80,711.0	84,878.3	91,976.1 *	98,087.1 *
Commercial	24,555.3	25,935.3	29,737.1	32,242.1	33,877.7
Municipal	25,373.1	27,393.0	28,966.4	30,977.0	32,596.0
Aquaculture	33,206.3	27,382.7	26,174.8	28,756.9	31,613.5

* - May not add up to total due to rounding off.

R - Revised.

P - Preliminary except for palay and corn.

SUMMARY: VALUE OF PRODUCTION (Continued)

ITEM	1996	1997	1998	1999 R	2000 P
FISHERY					
TOTAL VALUE					
(MILLION PESOS)					
Commercial	83,134.7	80,711.0	84,878.3	91,976.1	98,087.1
Municipal	24,555.3	25,935.3	29,737.1	32,242.1	33,877.7
Marine	25,373.1	27,393.0	28,966.4	30,977.0	32,596.0
Inland	23,333.3	25,235.6	26,634.6	28,830.6	29,975.8
Aquaculture	2,039.8	2,157.4	2,331.8	2,146.4	2,620.2
Brackishwater Fishpond	33,206.3	27,382.7	26,174.8	28,756.9	31,613.5
Freshwater Fishpond	27,167.5	20,942.7	19,518.0	20,649.8	23,296.3
Freshwater Fishpen	2,021.9	2,064.5	1,823.6	2,012.3	2,239.4
Marine Fishpen	787.6	881.8	924.3	1,195.0	1,164.4
Freshwater Fishcage	10.0	26.2	310.7	456.0	481.5
Marine Fishcage	1,473.7	1,898.5	1,554.9	1,705.3	1,800.8
Mariculture	19.6	56.0	182.0	259.3	257.8
Oyster	51.6	72.0	124.8	150.8	97.7
Mussel	51.7	44.1	66.3	99.1	114.1
Seaweed	1,622.7	1,396.9	1,670.2	2,229.3	2,161.5
TOP AQUA SPECIES					
(MILLION PESOS)					
Seaweeds	1,622.7	1,396.9	1,670.2	2,229.3	2,161.5
Milkfish	8,747.7	8,972.2	8,590.6	9,830.0	11,506.4
Tilapia	3,707.9	4,260.3	3,664.1	4,073.7	4,369.7
Tiger Prawn	18,040.6	11,430.0	10,992.1	10,847.7	11,792.4
Mussel	51.7	44.1	66.3	99.1	114.1
Oyster	51.6	72.0	124.8	150.8	97.7
Carp	43.2	36.8	107.9	233.4	280.3
Mudcrab	373.6	644.1	693.9	929.0	923.6
Mudfish	74.9	91.6	83.2	82.5	79.1
Catfish	54.5	45.8	37.6	49.1	54.9

R - Revised

P - Preliminary

RICE: SUPPLY-USE AND RELATED STATISTICS

ITEM	1996 R	1997 R	1998 R	1999 R	2000P
RICE SUPPLY-USE					
('000 MT)					
Carryover Stock	1,422	1,797	1,976	2,284	2,355
Production	7,334	7,325	5,560	7,662	8,053
Imports 1/	862	722	2,171	834	617
TOTAL SUPPLY	9,618	9,844	9,707	10,780	11,025
Exports					
Seeds 2/	244	249	212	286	289
Feeds & Wastes 3/	587	623	500	728	765
Apparent Consumption	6,990	6,996	6,711	7,411	7,782
PER CAPITA (KG)	100.2	98.3	92.5	100.1	103
TOTAL DEMAND	7,821	7,868	7,423	8,425	8,836
PALAY PRODUCTION					
(MILLION MT)					
TOTAL	11.28	11.27	8.55	11.79	12.39
Irrigated	8.23	8.48	6.68	8.92	9.41
Rainfed	3.05	2.79	1.87	2.87	2.98
JANUARY-JUNE	4.95	4.84	3.55	5.27	5.44
Irrigated	3.98	3.96	3.14	4.33	4.51
Rainfed	0.97	0.88	0.41	0.94	0.93
JULY-DECEMBER	6.33	6.42	5.00	6.52	6.95
Irrigated	4.25	4.52	3.54	4.59	4.90
Rainfed	2.08	1.91	1.46	1.93	2.05
AREA (PALAY)					
[MILLION HA]					
TOTAL	3.95	3.84	3.17	3.99	4.04
Irrigated	2.48	2.50	2.18	2.66	2.71
Rainfed	1.47	1.34	0.99	1.33	1.33
JANUARY-JUNE	1.66	1.62	1.28	1.74	1.74
Irrigated	1.16	1.15	1.00	1.27	1.27
Rainfed	0.50	0.47	0.28	0.47	0.47
JULY-DECEMBER	2.29	2.22	1.89	2.25	2.30
Irrigated	1.32	1.35	1.18	1.39	1.44
Rainfed	0.97	0.87	0.71	0.86	0.86

NOTE: See footnote content at end of table.

RICE: SUPPLY-USE AND RELATED STATISTICS (Continued)

ITEM	1996 R	1997 R	1998 R	1999 R	2000P
YIELD 4/ (PALAY) [MT PER HA]					
TOTAL	2.86	2.93	2.70	2.95	3.07
Irrigated	3.31	3.39	3.06	3.35	3.48
Rainfed	2.08	2.08	1.90	2.15	2.23
JANUARY-JUNE	2.97	2.98	2.77	3.02	3.13
Irrigated	3.42	3.45	3.15	3.41	3.56
Rainfed	1.93	1.86	1.46	2.00	1.98
JULY-DECEMBER	2.77	2.90	2.65	2.89	3.02
Irrigated	3.22	3.35	2.99	3.29	3.41
Rainfed	2.16	2.19	2.07	2.23	2.37
RICE STOCKS ('000 MT)					
TOTAL					
January 1	1,422.2	1,797.1	1,976.5	2,284.1	2,355.5
July 1	1,602.1	1,818.0	1,927.1	2,380.9	1,632.4
HOUSEHOLD					
January 1	1,019.9	1,015.8	1,088.1	955.5	1,149.7
July 1	714.5	683.9	595.3	685.5	665.5
COMMERCIAL					
January 1	325.1	465.6	448.2	413.0	488.2
July 1	362.4	394.8	419.9	461.5	456.8
NFA					
January 1	77.2	315.7	440.2	915.6	717.6
July 1	525.2	739.3	911.9	1,233.9	510.1

Sum of the aggregates may not tally due to rounding off.

1/ NSO figures.

2/ Updated based on seeding rate.

3/ Updated based on post-harvest losses.

4/ Yield per hectare derived prior to rounding off figure on production and hectareage.

R - Revised due to change in MRR from 65.4% to 65.0% and update on import data.

P - Preliminary.

CORN: SUPPLY-USE AND RELATED STATISTICS

ITEM	1996	1997	1998 R	1999	2000 P
CORN SUPPLY-USE					
('000 MT)					
Carryover					
Stock (Jan.1)	190	259	320	483	238
Production	4,151	4,332	3,823	4,585	4,511
Corn Imports 1/	402	303	462	149	508
Corn Substitutes 2/	695	809	1,224	368	442
TOTAL SUPPLY	5,438	5,703	5,829	5,585	5,699
Exports					
Food	733	758	819	897	907
Seeds	55	55	49	53	50
Feeds, Wastes and Other Uses	4,391	4,570	4,478	4,397	4,552
TOTAL DEMAND	5,179	5,383	5,346	5,347	5,509
PRODUCTION					
(MILLION MT)					
TOTAL	4.15	4.33	3.82	4.58	4.51
White	1.88	1.88	1.62	1.82	1.89
Yellow	2.27	2.45	2.20	2.76	2.62
January-June	1.78	1.84	1.04	2.11	1.97
White	0.68	0.69	0.33	0.65	0.72
Yellow	1.10	1.15	0.71	1.46	1.25
July-December	2.37	2.49	2.78	2.48	2.54
White	1.20	1.19	1.29	1.17	1.17
Yellow	1.17	1.30	1.49	1.31	1.37
AREA ('000 HA)					
TOTAL	2.73	2.73	2.36	2.64	2.51
White	1.69	1.70	1.45	1.61	1.57
Yellow	1.04	1.03	0.91	1.03	0.94
January-June	1.06	1.05	0.69	1.09	1.00
White	0.57	0.58	0.36	0.55	0.56
Yellow	0.49	0.47	0.34	0.54	0.44
July-December	1.67	1.68	1.67	1.55	1.50
White	1.12	1.12	1.09	1.06	1.01
Yellow	0.55	0.56	0.58	0.49	0.49

CORN: SUPPLY USE AND RELATED STATISTICS (Continued)

ITEM	1996	1997	1998 R	1999	2000 R
YIELD (MT PER HA) 3/					
TOTAL	1.52	1.59	1.62	1.74	1.80
White	1.11	1.11	1.12	1.13	1.20
Yellow	2.18	2.39	2.44	2.67	2.80
January-June	1.67	1.76	1.52	1.92	1.97
White	1.19	1.20	0.93	1.18	1.29
Yellow	2.24	2.45	2.16	2.67	2.82
July-December	1.42	1.48	1.67	1.60	1.68
White	1.07	1.06	1.18	1.11	1.15
Yellow	2.13	2.33	2.60	2.66	2.78
STOCKS ('000 MT)					
TOTAL					
January 1	189.5	259.3	319.8	483.0	237.9
July 1	169.8	144.3	135.6	323.0	193.5
HOUSEHOLD					
January 1	96.9	124.6	125.7	158.8	102.3
July 1	64.5	62.2	41.7	72.0	100.2
COMMERCIAL					
January 1	92.6	120.0	156.9	159.3	128.9
July 1	103.1	81.5	93.6	155.8	92.3
NFA					
January 1	0.0	14.7	37.2	164.9	6.7
July 1	2.2	0.6	0.5	95.2	1.0

Sum of the aggregates may not tally due to rounding off.

1/ NSO figures.

2/ Implied wheat imports and local substitutes used as feeds.

3/ Yield per hectare derived prior to rounding-off figures on production and hectareage.

R - Revised

P - Preliminary

SELECTED LIVESTOCK AND POULTRY STATISTICS

ITEM	1996	1997	1998	1999	2000	2001 P
LIVESTOCK						
JANUARY 1 INVENTORY						
(MILLION HEAD)						
Carabao	2.84	2.99	3.01	3.01	3.02	3.06
Cattle	2.13	2.27	2.38	2.42	2.48	2.49
Hogs	9.03	9.75	10.21	10.40	10.71	11.06
Goats	2.98	3.02	3.09	3.05	3.15	3.21
POULTRY						
JANUARY 1 INVENTORY						
(MILLION HEAD)						
Chicken 1/	115.78	134.97	138.52	113.72	115.19	115.61
Broiler	39.31	46.56	46.39	32.65	29.02	28.96
Layer (for strain)	10.80	11.47	13.17	13.37	14.92	14.87
Native 2/	65.67	76.94	78.96	67.70	71.25	71.78
Duck	9.47	8.92	8.82	8.61	9.24	9.83
NUMBER OF HEAD						
SLAUGHTERED ('000 HEAD)						
Carabao 3/	265	283	301	317	330	
Cattle	686	753	779	810	811	
Hogs	15,364	16,091	16,657	17,369	17,973	
Goats 3/	1,702	1,718	1,844	1,894	1,927	
NUMBER OF BIRDS						
DRESSED (MILLION HEAD)						
Chicken	407.61	444.86	439.97	444.63	472.55	
Duck	10.70	10.66	10.75	10.74	10.79	
NO. OF "OKSYON" MARKETS						
COVERED BY BAS						
	33	33	33	33	33	
NO. OF PROVINCES						
REPORTING						
	33	33	33	33	33	
ANIMALS SOLD ('000 HEAD)						
IN "OKSYON" MARKET						
Carabao	126.57	124.55	128.75	138.60	138.77	
Cattle	37.61	44.59	43.97	48.16	49.44	
	88.96	79.96	84.78	90.44	89.33	

1/ Revised based on Broiler Projection Model.

2/ Includes gamefowls.

3/ Revised to reflect results of provincial and regional data review and validation.

P - Preliminary

AGRICULTURAL FOREIGN TRADE STATISTICS

ITEM	1996	1997	1998	1999	2000
AGRIC'L TRADE					
(MILLION FOB US \$)					
VALUE OF AGRIC'L EXPORTS	2,306.64	2,337.57	2,224.67	1,760.14	1,982.73
VALUE OF AGRIC'L IMPORTS	3,095.85	3,101.80	2,894.57	2,874.96	2,776.93
VOLUME OF PRINCIPAL AGRICULTURAL EXPORTS					
('000 MT)					
Coconut Oil	792.65	1,107.65	1,177.13	478.00	1,036.43
Banana,	1,253.17	1,153.69	1,147.11	1,319.62	1,599.35
Pineapple & Products	439.08	410.70	371.02	397.67	442.52
Shrimps & Prawns	13.51	10.26	10.53	11.06	12.06
Tuna	74.35	78.20	78.92	77.98 [*]	78.53
Seaweeds & Carageenan	36.78	40.35	34.46	40.54	56.09
Desiccated Coconut	69.58	76.79	71.89	76.22	73.69
Sugar	317.70	197.82	184.80	142.53	138.60
Fertilizer Manufactured	588.42	493.19	520.90	258.93	278.51
Mango, fresh	40.25	44.94	51.70	35.16	39.00
Copra Oil-Cake/ Meal*	474.55	571.00	543.77	280.81	530.38
Coffee, Raw or Green,*	0.49	0.54	0.71	0.21	0.27
Copra*	3.09	6.92	3.60	1/	2.66
Abaca (in '000 Bales)*	138.04	156.30	192.30	160.70	177.79

NOTE: See footnote content at end of table on page 27.

AGRICULTURAL FOREIGN TRADE STATISTICS...continued

ITEM	1996	1997	1998	1999	2000
CEREALS ('000 MT)	0.23	0.37	0.21	0.37	0.47
Rice	0.00	0.00	0.04	0.29	0.22
Corn	0.23	0.37	0.17	0.08	0.25
POULTRY ('000 HEAD)	7.76	9.87	8.21	2.13	56.71
Chicken	7.76	9.87	8.21	2.13	56.71
FISHERY ('000 MT)	126.60	129.28	92.23	122.41	147.53
Shrimps and Prawns	13.51	10.27	10.53	11.06	12.06
Tuna and Tuna-like	74.40	78.20	46.58	77.98	78.53
Seaweeds (Eucheuma) R	37.15	40.35	34.46	32.91	56.09
Shells 2/ Milkfish	1.42	0.35	0.50	0.31	0.62
	0.12	0.11	0.16	0.15	0.21
VALUE OF PRINCIPAL AGRICULTURAL EXPORTS (MILLION FOB US \$)					
Coconut Oil	570.64	673.43	705.66	342.28	463.94
Banana,	236.42	216.56	217.04	240.70	291.63
Pineapple & Products	156.27	149.55	140.35	137.32	155.95
Shrimps & Prawns	153.35	126.43	129.34	127.61	144.65
Tuna	162.64	164.61	183.25	129.65	118.26
Seaweeds & Carageenan	94.07	94.72	64.71	85.59	84.87
Desiccated Coconut	84.89	88.29	72.76	89.18	73.25
Sugar	136.2	82.71	80.00	62.62	51.71
Fertilizer Manufactured	114.54	98.95	91.59	44.10	43.63
Mango, fresh	39.76	40.48	41.74	32.34	34.33
Copra Oil-Cake/ Meal*	56.31	52.51	35.55	18.19	22.76
Coffee, Raw or Green,*	1.29	1.22	1.45	0.46	0.43
Copra*	1.35	2.57	1.40	1/	0.57
Abaca (in '000 Bales)*	21.25	22.24	17.16	19.5	18.46

AGRICULTURAL FOREIGN TRADE STATISTICS...continued

ITEM	1996	1997	1998	1999	2000
CEREALS					
('000 FOB US \$)	2,489.86	3,501.18	500.28	492.34	533.83
Rice	-	0.38	31.51	148.02	114.86
Corn	2,489.86	3,500.80	468.77	344.32	418.97
POULTRY					
('000 FOB US \$)	57.58	94.98	81.58	136.17	250.94
Chicken	57.78	94.98	81.58	136.17	250.94
FISHERY					
(MILLION FOB US \$)	410.36	390.89	267.55	304.40	352.35
Shrimp and Prawns	153.35	126.43	129.34	127.61	144.65
Tuna and Tuna-like	162.64	164.61	70.94	129.65	118.26
Seaweeds (Eucheuma)	94.05	94.94	64.71	44.74	84.87
Shells 2/ Milkfish	4.95 0.32	4.64 0.27	2.18 0.38	2.08 0.32	3.87 0.66
VOLUME OF AGRICULTURAL IMPORTS					
CEREALS					
('000 MT)	1,264.72	1,025.36	2,632.95	985.84	1086.31
Rice	862.38	722.40	2,170.83	836.38	638.78
Corn	402.34	302.96	462.12	149.46	446.43
LIVESTOCK					
('000 MT)	59.72	75.53	57.61	82.29	98.03
Beef	55.44	68.49	50.71	64.17	82.24
Pork	4.28	7.04	6.90	18.12	15.79

NOTE: See footnote content at end of table on page 27.

AGRICULTURAL FOREIGN TRADE STATISTICS...continued

ITEM	1996	1997	1998	1999	2000
POULTRY					
('000 Head)	1,534.19	838.03	1,174.32	1,771.78	1,779.59
Chicken	1,524.25	832.28	1,174.32	1,768.98	1,779.54
Duck	9.94	5.75	-	2.80	0.05
FISHERY					
('000 MT)	238.02	241.41	185.80	235.40	374.73
Fish meal	95.50	78.25	68.25	69.80	79.56
Canned	1.61	1.88	0.52	1.18	0.91
Fresh/Frozen					
Chilled	140.89	161.27	116.92	164.20	135.52
Salted/Dried/ Smoked, etc.	0.02	0.01	0.11	0.22	158.74
VALUE OF PRINCIPAL AGRICULTURAL IMPORTS (MILLION FOB US \$)					
Wheat and Meslin	374.88	422.67	248.65	363.04	352.88
Milk & Cream & Products	329.38	343.24	251.18	261.04	340.3
Soyabean Oil					
Cake/Meal	97.13	183.94	207.91	114.88	162.52
Rice	294.04	211.32	585.84	218.49	123.33
Tobacco					
Unmanufactured	62.1	121.07	74.43	103.27	102.09
Meat of					
Bovine Animals	75.85	96.98	64.79	71.61	91.11
Urea	107.35	89.24	67.85	75.72	73.55
Maize	85.70	54.12	78.32	34.79	57.59
Cotton	123.30	106.81	60.47	69.09	53.40
Soyabeans	35.89	31.93	47.02	103.98	49.17

AGRICULTURAL FOREIGN TRADE STATISTICS...continued

ITEM	1996	1997	1998	1999	2000
Cereals and Cereal Preparations	843.08	771.12	980.80	693.50	600.89
Fertilizers, Manufactured	194.62	213.96	161.77	153.78	168.34
Dairy Products and Bird Eggs	388.46	406.01	300.30	309.11	389.92
Feeding Stuff for Animals Excluding Unmilled Cereals	197.26	310.69	282.84	202.71	269.43
Tobacco and Tobacco Manufactures	71.52	141.48	107.35	128.50	140.93
Coffee, Tea, Cocoa, Spices and Manufactures	49.66	78.94	66.09	61.44	66.67
Fish, Crustaceans and Mollusks and Preparation thereof	68.88	70.18	57.02	74.84	600.89
Meat and Meat Preparation	96.71	129.86	92.10	139.49	137.67
Vegetables and Fruits	122.68	137.31	108.08	140.49	124.4
Fixed Vegetable Oil and Fats	32.31	32.8	30.70	69.37	43.79

AGRICULTURAL FOREIGN TRADE STATISTICS...continued

ITEM	1996	1997	1998	1999	2000
CEREALS					
('000 FOB US\$)	379,743.26	265,443.27	664,182.73	253,285.32	180,928.68
Rice	294,042.40	211,324.02	585,867.36	218494.92	123,334.61
Corn	85,700.86	54,119.25	78,315.37	34790.4	57,594.07
LIVESTOCK					
(MILLION FOB US\$)	82.57	109.36	74.21	90.92	106.93
Beef	75.85	96.98	64.79	71.61	91.11
Pork	6.72	12.38	9.42	19.31	15.82
POULTRY					
('000 FOB US \$)	6,618.04	4,703.78	1,621.30	5909.35	6,217.28
Chicken	6,617.29	4,703.18	1,621.30	5909.07	6,212.80
Duck	0.75	0.60	-	0.28	4.48
FISHERY					
(MILLION FOB US\$)	105.56	119.10	99.75	96.12	76.69
Fish meal	48.10	52.25	44.30	26.39	28.43
Canned	2.32	2.38	0.98	1.76	1.33
Fresh/Frozen/ Chilled	54.99	64.33	54.26	67.79	46.71
Salted/Dried/ Smoked, etc.	0.15	0.14	0.21	0.18	0.22

1/ Less than 0.1 MT.

2/ Shells include mussels, clams, oysters and abalone.

* not included in the top ten

SELECTED PRICE STATISTICS

ITEM	1996	1997	1998	1999	2000
CONSUMER PRICE INDEX (1994=100)					
PHILIPPINES	117.80	124.80	136.90	146.03	160.00
NCR	117.30	125.10	137.90	145.20	160.90
Outside NCR	117.90	124.50	136.50	146.30	159.70
AVERAGE PRICE FERTILIZER (UREA)					
Dealer's Price (UREA) (P/Bag of 50 kgs.)	388.60	365.70	379.75	340.61	366.53
World Price (\$/MT)	205.50	146.10	121.20	-	-

SELECTED PRICE STATISTICS (Continued)

ITEM	1996	1997	1998 R	1999 R	2000 P
RICE					
DOMESTIC PRICE (P/KG)					
Farm (Palay, Special)	8.13	7.92	8.11	7.87	8.39
Wholesale (Rice, Special)	17.39	16.88	17.40	17.46	17.77
Retail (Rice, Special)	19.00	18.55	19.03	19.16	19.45
CORN					
DOMESTIC PRICE (P/KG)					
Farm (Grain)					
White	6.78	6.17	5.62	6.32	6.96
Yellow	6.16	5.97	5.65	5.39	6.42
Wholesale (Grain)					
White	8.02	7.09	7.13	7.10	7.91
Yellow	7.71	7.63	8.32	8.47	9.20
Retail (Grain)					
White	11.33	10.86	11.78	11.47	12.00
Yellow	10.97	11.10	11.66	11.73	12.71
WORLD PRICE					
(FOB US\$)					
Corn					
US \$/MT	165.80	117.10	102.00	75.33	73.92
Peso/MT	4,346.60	3,451.00	4,171.00	2,944.57	3,266.52

SELECTED PRICE STATISTICS (Continued)

ITEM	1996	1997	1998 R	1999 R	2000 P
FARM PRICE					
(P/KG)					
Coconut					
Copra (corriente)	9.18	8.07	11.30	12.66	6.87
Matured nuts 1/	2.42	1.94	2.97	3.81	2.04
Young nuts 1/	2.23	2.86	3.91	4.68	2.08
Sugarcane					
Centrifugal sugar	13.60	12.01	14.88	15.56	14.01
Coffee					
Robusta	40.18	41.77	55.43	50.90	31.87
Arabica	52.76	48.75	52.90	57.13	41.55
Excelsa	45.05	37.72	53.70	58.74	32.61
Pineapple, Hawaiian	4.65	6.21	6.96	6.17	5.88
Banana					
Bungulan	2.82	2.45	2.64	0.55 1/	4.68
Latundan	5.10	5.50	4.50	0.56 1/	4.69
Lakatan	5.49	5.64	5.31	0.82 1/	5.62
Saba	2.70	3.15	3.51	0.38 1/	3.08
Mango (Carabao)	19.10	17.93	20.19	25.29	19.21
Cassava	3.54	3.47	3.87	3.53	3.55
Camote	4.34	4.35	5.04	4.79	4.68
Rubber (coagulated)	9.62	8.12	7.84	6.00	8.30

SELECTED PRICE STATISTICS (Continued)

ITEM	1996	1997	1998 R	1999 R	2000 P
LIVESTOCK					
(LIVEWEIGHT, P/KG) 2/					
Carabao	32.56	32.96	33.04	38.81	36.23
Cattle	43.73	43.62	43.84	39.85	47.89
Hog	47.58	49.25	48.70	51.01	51.37
Goat	38.38	41.21	41.40	44.39	43.85
POULTRY					
(LIVEWEIGHT, P/KG)					
Chicken (broiler)					
Farm	47.54	46.12	54.75	53.17	55.29
Wholesale 3/	43.96	46.16	54.61	52.31	53.94
Retail	58.12	57.18	61.46	65.58	64.58
Duck	51.81	52.43	49.59	51.49	53.61
FISHERY (P/KG)					
WHOLESALE					
Tuna	34.89	35.27	36.36	42.41	43.37
Galunggong	30.59	31.93	34.45	40.03	41.49
Dilis	27.20	28.12	31.25	32.65	35.75
Sapsap	27.22	28.30	30.46	31.98	34.87
RETAIL					
Tuna	45.02	46.29	48.97	51.29	52.65
Galunggong	43.38	44.97	47.42	53.41	54.90
Dilis	41.89	44.14	47.42	46.72	47.96
Sapsap	57.25	58.93	59.92	63.92	68.39

1/ Peso per nut/piece
 2/ Farmgate prices
 3/ Metro Manila only

R - Revised
 P - Preliminary