



BUREAU OF  
LABOR AND  
EMPLOYMENT  
STATISTICS

DEPARTMENT OF LABOR AND EMPLOYMENT  
Manila, Philippines

# LABSTAT

## Updates

Vol. 4 No. 12

September 2000

## THE LABOR FORCE SURVEY IN BRIEF July (1999-2000)

### OVERVIEW

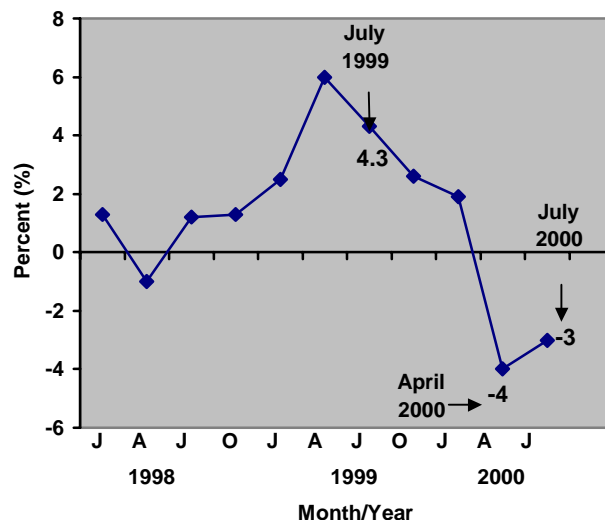
Employment in July grew at a sluggish pace compared last year, results of the latest Labor Force Survey (LFS) indicate. This is the third consecutive time this year that employment growth has fallen below its year ago level. The slowdown is again due to the severe slump (-10.1%) in agricultural sector which is a reversal of the robust 6.8 percent growth rate achieved in July last year. Similarly, industry sector employment suffered a decline across the board except in mining and quarrying. Only service sector employment fared better than last year driven by strong growth in community, social and personal services and transportation storage and communication. On the brighter side, the incidence of underemployment fell by 0.9 percentage points over the period. It is also important to note that full-time employment and wage and salary employment managed to grow by 5.1 percent and 3.2 percent, respectively. The decline in employment was confined almost entirely among unpaid family workers (-20.3%) and part-time workers (-17.1%).

Along with employment decline, unemployment rate edged up to 11.1 percent, 2.7 percentage points higher than last year. This translates to 3.510 million unemployed persons in July.

### Labor Force and Participation Rate

The country's labor force fell by 0.1 percent (-25,000) to reach 31.688 million. The corresponding labor force participation rate (LFPR) was down by 1.7 percentage points to 63.9 percent. Notable increases in LFPR were observed among workers 25-54 years old (77.7% to 74.8%), women workers (49.4% to 47.7%) and rural workers (67.9% to 65.6%).

### EMPLOYMENT GROWTH Jan. 1998-July 2000



## Employment

Total employed persons decreased by 3.0 percent (-877,000), a complete reversal from 4.3 percent growth rate (+1.2 million) recorded in 1999. In absolute terms, employment level fell from 29.055 million to 28.178 million over the period.

- ❑ Employment in agriculture, fishery and forestry sector contracted by 10.1 percent (-1.188 million) from last year level. This sector employed some 10.568 million persons or 37.5 percent of the country's total employed, down from 40.5 percent last year.
- ❑ Employment in industry sector contracted by 1.8 percent (-82,000) in July following two consecutive year-on-year decline in January (-0.7% or -31,000) and April (-1.3% or -62,000). Except mining and quarrying, employment losses cut across the sub-sectors: manufacturing (-34,000), electricity, gas and water (-20,000) and construction (-37,000).
- ❑ Services employment continued its uptrend growing at 3.0 percent (+385,000) from year ago level. Most of the gains in employment, however, occurred in community social and personal services (+213,000), transportation, storage and communication (+104,000) and wholesale and retail trade (+93,000) where large informal sector activities are taking place.
- ❑ Persons in full-time employment grew by 5.1 percent (+941,000),

stronger than the 1.2 percent growth (+219,000) recorded a year ago. Part-time employment plunged by 17.2 percent (-1.785 million) most of them agricultural workers and unpaid family workers.

- ❑ Wage and salary employment continued its uptrend posting a 3.2 percent (+450,000) increase. Own-account employment was down 4.6 percent (-500,000). Similarly, employment of unpaid family workers declined by a steep 20.3 percent (-829,000). It can be recalled that employment of unpaid family workers declined by a hefty 24.1 percent (-1.078 million) in April, causing employment to fall by 4.0 percent (-1.191 million).

### A CLOSER LOOK ON AGRICULTURAL EMPLOYMENT

Employment in agriculture, fishery and forestry sector has shown highly erratic movement since April 1999 when the sector posted a dramatic recovery (15.9 percent growth rate) from a two-year slump caused by the severe drought that began in 1996. Since then, growth on a year-on-year basis has gone down as follows: 6.8 percent in July 1999, 0.6 percent in October 1999, 1.0 percent in January 2000, -12.4 percent in April 2000 and -10.1 percent in July 2000. This downtrend has brought instability to overall employment performance, particularly in April when the steep fall in agricultural employment pushes unemployment rate up to a record 13.9 percent.

- Employment levels declined in all but one region (Region I). Employment losses were recorded highest in Region III (-5.3% or -148,000), Region X (-8.2% or -108,000) and Region XI (-5.4% or -107,000). It should be noted that all regions in Mindanao suffered a decline in employment during the period under review.

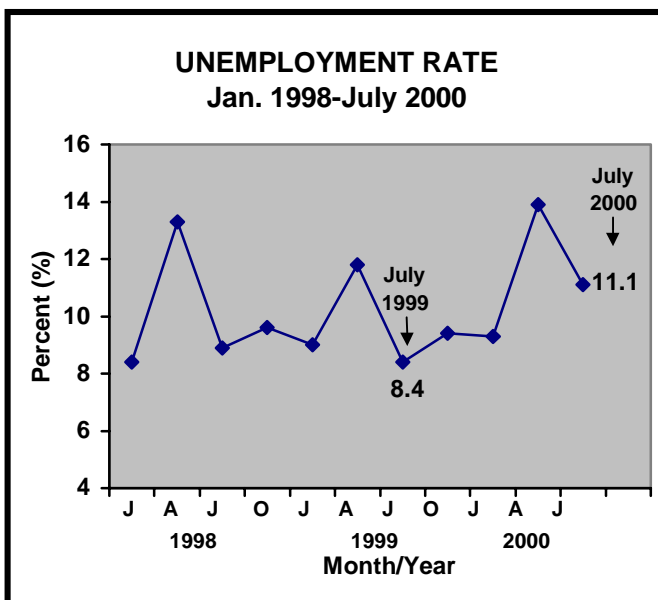
The youth comprised almost half (50.5%) of total unemployed persons.

- Unemployed women rose by 337,000, pushing their unemployment rate by 2.8 percentage points to 11.3 percent. Rural unemployment rate increased 2.3 percentage points (+358,000) from July last year.

## Unemployment

Unemployment rate stood at 11.1 percent, upped from 8.4 percent last year. The number of people looking for work rose by 852,000, increasing from 2.658 million to 3.510 million. The number of unemployed could have been higher had the labor force participation rate not fall this period.

- Unemployment rate remained highest in the National Capital Region (NCR) at 17.3 percent, upped 1.9 percentage points from a year ago. Notable increases in unemployment rates were observed in three (3) regions, namely: Region I (6.5% to 10.5%), Region III (9.3% to 13.5%) and Region XII (5.3% to 10.3%).



## Underemployment

The number of underemployed persons declined by 449,000 to reach 6.017 million in July. This was accompanied by a decline in underemployment rate to 21.4 percent from 22.3 percent last year. More than one-half (59.1% or 3.555 million) of total underemployed persons were rural workers.

Of total underemployed persons, 10.2 percent or 2.876 million worked less than 40 hours a week or visibly underemployed. This is lower by 1.8 percentage points (-605,000) compared a year ago.

- Youth (15-24 years old) unemployment was up by 513,000 from last year. Accordingly, their unemployment rate rose 6.2 percentage points to 24.4 percent.

### FOR INQUIRIES:

Regarding this report contact **Employment and Manpower Statistics Division** at 527-3419

Regarding other statistics and technical services contact **BLES Databank** at 527-3577

Or write to BLES c/o Databank, 3/F DOLE Bldg., Gen. Luna St., Intramuros, Manila 1002

FAX 527-3579 E-mail: [emsd@manila-online.net](mailto:emsd@manila-online.net) Website: <http://www.manila-online.net/bles>

**TABLE 1.0**  
**SUMMARY STATISTICS ON LABOR FORCE, PHILIPPINES: 1997-2000 (July)**  
*(In thousands)*

<b>Year/Month</b>	<b>Labor Force</b>	<b>Employed</b>	<b>Unemployed</b>	<b>Underemployed</b>
<b>1997 (Ave.)</b>	<b>30,355</b>	<b>27,715</b>	<b>2,640</b>	<b>6,122</b>
January	29,631	27,335	2,296	5,755
April	31,368	28,105	3,263	6,577
July	30,154	27,531	2,623	6,348
October	30,265	27,888	2,377	5,806
<b>1998 (Ave.)</b>	<b>31,056</b>	<b>27,911</b>	<b>3,145</b>	<b>6,082</b>
January	30,239	27,689	2,551	5,986
April	32,113	27,835	4,274	5,837
July	30,593	27,856	2,737	5,803
October	31,278	28,262	3,016	6,701
<b>1999 (Ave.)</b>	<b>32,081</b>	<b>28,980</b>	<b>3,102</b>	<b>6,481</b>
January	31,168	28,368	2,800	6,269
April	33,444	29,492	3,952	6,694
July	31,713	29,055	2,658	6,466
October	32,000	29,003	2,997	6,415
<b>2000</b>				
January	31,848	28,895	2,953	6,117
April	32,874	28,301	4,573	7,105
July	31,688	28,178	3,510	6,017

*Note: Details may not add up to totals due to rounding of figures.*  
*Source: Labor Force Survey, National Statistics Office.*

**TABLE 2.0**  
**SUMMARY STATISTICS ON LABOR FORCE, PHILIPPINES: 1997-2000 (July)**  
*(In percent)*

<b>Year/Month</b>	<b>Labor Force Participation Rate</b>	<b>Employment Rate</b>	<b>Unemployment Rate</b>	<b>Underemployment Rate</b>	<b>Visible Underemployment Rate</b>
<b>1997 (Ave.)</b>	<b>66.4</b>	<b>91.3</b>	<b>8.7</b>	<b>22.1</b>	<b>10.9</b>
January	65.4	92.3	7.7	21.1	11.0
April	68.8	89.6	10.4	23.4	11.8
July	65.7	91.3	8.7	23.1	10.4
October	65.5	92.1	7.9	20.8	10.5
<b>1998 (Ave.)</b>	<b>66.1</b>	<b>89.9</b>	<b>10.1</b>	<b>21.8</b>	<b>11.8</b>
January	65.0	91.6	8.4	21.6	11.9
April	68.6	86.7	13.3	21.0	12.0
July	64.9	91.1	8.9	20.8	10.9
October	66.0	90.4	9.6	23.7	12.6
<b>1999 (Ave.)</b>	<b>66.6</b>	<b>90.3</b>	<b>9.7</b>	<b>22.3</b>	<b>12.0</b>
January	65.3	91.0	9.0	22.1	12.1
April	69.6	88.2	11.8	22.7	12.4
July	65.6	91.6	8.4	22.3	12.0
October	65.8	90.6	9.4	22.1	11.4
<b>2000</b>					
January	65.1	90.7	9.3	21.1	11.7
April	66.7	86.1	13.9	25.1	12.6
July	63.9	88.9	11.1	21.4	10.2

Source: National Statistics Office, Labor Force Survey.

**Table 3.0**  
**SUMMARY STATISTICS ON LABOR FORCE, PHILIPPINES: 1999-2000 (July)**  
(In thousands except rates)

Indicator	1999	2000	Increment	Growth Rate (Percent)
<b>LABOR FORCE POPULATION</b>	<b>31,713</b>	<b>31,688</b>	<b>-25</b>	<b>-0.1</b>
<b>EMPLOYED PERSONS</b>	<b>29,055</b>	<b>28,178</b>	<b>-877</b>	<b>-3.0</b>
<b>SECTOR</b>				
<b>Agriculture, Fishery and Forestry</b>	<b>11,756</b>	<b>10,568</b>	<b>-1,188</b>	<b>-10.1</b>
<b>Industry</b>	<b>4,533</b>	<b>4,451</b>	<b>-82</b>	<b>-1.8</b>
Mining and Quarrying	98	107	9	9.2
Manufacturing	2,742	2,708	-34	-1.2
Electricity, Gas and Water	138	118	-20	-14.5
Construction	1,555	1,518	-37	-2.4
<b>Services</b>	<b>12,761</b>	<b>13,146</b>	<b>385</b>	<b>3.0</b>
Wholesale and Retail Trade	4,449	4,542	93	2.1
Transportation, Storage & Comm.	1,931	2,035	104	5.4
Financing, Insurance, R. Estate & Bus.Svs.	739	714	-25	-3.4
Community, Social & Personal Services	5,642	5,855	213	3.8
NEC	4	12	8	200.0
<b>CLASS OF WORKER</b>				
Wage and Salary Workers	14,022	14,472	450	3.2
Own-Account Workers	10,944	10,444	-500	-4.6
Unpaid Family Workers	4,090	3,261	-829	-20.3
<b>HOURS OF WORK</b>				
Less than 40 Hours (Part-Time Employment)	10,394	8,609	-1,785	-17.2
40 Hours and Over (Full-Time Employment)	18,351	19,292	941	5.1
Did Not Work	310	278	-32	-10.3
<b>REGION</b>				
NCR	3,660	3,631	-29	-0.8
CAR	559	548	-11	-2.0
Region I	1,590	1,597	7	0.4
Region II	1,295	1,266	-29	-2.2
Region III	2,783	2,635	-148	-5.3
Region IV	3,891	3,840	-51	-1.3
Region V	1,993	1,951	-42	-2.1
Region VI	2,566	2,470	-96	-3.7
Region VII	2,130	2,064	-66	-3.1
Region VIII	1,532	1,508	-24	-1.6
Region IX	1,137	1,110	-27	-2.4
Region X	1,318	1,210	-108	-8.2
Region XI	1,986	1,879	-107	-5.4
Region XII	976	894	-82	-8.4
ARMM	707	693	-14	-2.0
Caraga	932	883	-49	-5.3

*Note: Details may not add to totals due to rounding of figures.*  
*Source: National Statistics Office, Labor Force Survey.*

**Table 4.0 – SUMMARY STATISTICS ON LABOR FORCE PARTICIPATION RATE  
AND UNEMPLOYED PERSONS, PHILIPPINES: 1999-2000 (July)**  
(in thousands except percent)

Indicator	Labor Force		Total		Percent Share (%)		Unemployment Rate (%)	
			Unemployed Persons					
	1999	2000	1999	2000	1999	2000	1999	2000
<b>Sex</b>	<b>65.6</b>	<b>63.9</b>	<b>2,658</b>	<b>3,510</b>	<b>100.0</b>	<b>100.0</b>	<b>8.4</b>	<b>11.1</b>
Men	81.9	80.4	1,641	2,155	61.7	61.4	8.3	10.9
Women	49.4	47.7	1,018	1,355	38.3	38.6	8.5	11.3
<b>Age Group</b>	<b>65.6</b>	<b>63.9</b>	<b>2,658</b>	<b>3,510</b>	<b>100.0</b>	<b>100.0</b>	<b>8.4</b>	<b>11.1</b>
15-24 years old	48.8	47.8	1,260	1,773	47.4	50.5	18.2	24.4
25-54 years old	77.7	74.8	1,174	1,631	44.2	46.5	5.8	7.1
55 years old and over	57.1	40.5	225	106	8.5	3.0	4.9	6.9
<b>Area</b>	<b>65.6</b>	<b>63.9</b>	<b>2,658</b>	<b>3,510</b>	<b>100.0</b>	<b>100.0</b>	<b>8.4</b>	<b>11.1</b>
Urban	63.2	62.2	1,671	2,164	62.9	61.7	11.3	14.3
Rural	67.9	65.6	988	1,346	37.2	38.3	5.8	8.1
<b>Region</b>	<b>65.6</b>	<b>63.9</b>	<b>2,658</b>	<b>3,510</b>	<b>100.0</b>	<b>100.0</b>	<b>8.4</b>	<b>11.1</b>
NCR	63.2	62.4	664	758	25.0	21.6	15.4	17.3
CAR	65.9	65.1	29	47	1.1	1.3	4.9	7.9
Region I	63.7	65.4	111	187	4.2	5.3	6.5	10.5
Region II	69.6	68.6	43	88	1.6	2.5	3.2	6.5
Region III	62.3	60.3	284	410	10.7	11.7	9.3	13.5
Region IV	64.7	64.2	374	511	14.1	14.6	8.8	11.8
Region V	66.4	64.8	170	213	6.4	6.1	7.9	9.8
Region VI	65.2	63.2	213	288	8.0	8.2	7.7	10.4
Region VII	65.9	63.4	206	234	7.8	6.7	8.8	10.2
Region VIII	66.9	66.3	107	150	4.0	4.3	6.5	9.0
Region IX	63.0	61.4	69	96	2.6	2.7	5.7	7.9
Region X	77.0	70.3	85	107	3.2	3.0	6.1	8.1
Region XI	70.6	67.2	149	204	5.6	5.8	7.0	9.8
Region XII	68.1	64.1	55	103	2.1	2.9	5.3	10.3
ARMM	57.1	55.3	23	31	0.9	0.9	3.2	4.2
CARAGA	70.4	65.8	75	84	2.8	2.4	7.4	8.7

*Note: Details may not add to totals due to rounding of figures.*

*Source: National Statistics Office, Labor Force Survey.*