



# SPECIAL RELEASE

## 2019 Annual Survey of Philippine Business and Industry Economy-Wide Preliminary Results

Date of Release: 04 July 2022  
Reference No. 2022-265

Table A. Summary Statistics for Economy-Wide: Philippines, 2019

Particulars	2019
Number of Establishments	278,181
Employment	7,622,394
Average Employment per Establishment	27
Compensation (in thousand PhP)	2,353,929,572
Average Annual Compensation (in PhP)	312,355
Revenue (in thousand PhP)	25,455,241,576
Expense (in thousand PhP)	22,062,880,975
Revenue per Expense Ratio	1.15

Source: Philippine Statistics Authority, 2019 ASPBI (Preliminary Results)

### **Wholesale and Retail Trade; Repair of Motor Vehicles and Motorcycles dominated the economy in terms of the total number of establishments**

The Annual Survey of Philippine Business and Industry (ASPBI) preliminary results showed that in 2019, the Philippines had a total of 278,181 establishments in the formal sector of the economy. (Tables A and 1)

Among sectors, Wholesale and Retail Trade; Repair of Motor Vehicles and Motorcycles led in terms of number of establishments with 116,220 or 41.8 percent share to total establishments. This was followed by Financial and Insurance Activities with 38,698 (13.9%) establishments,



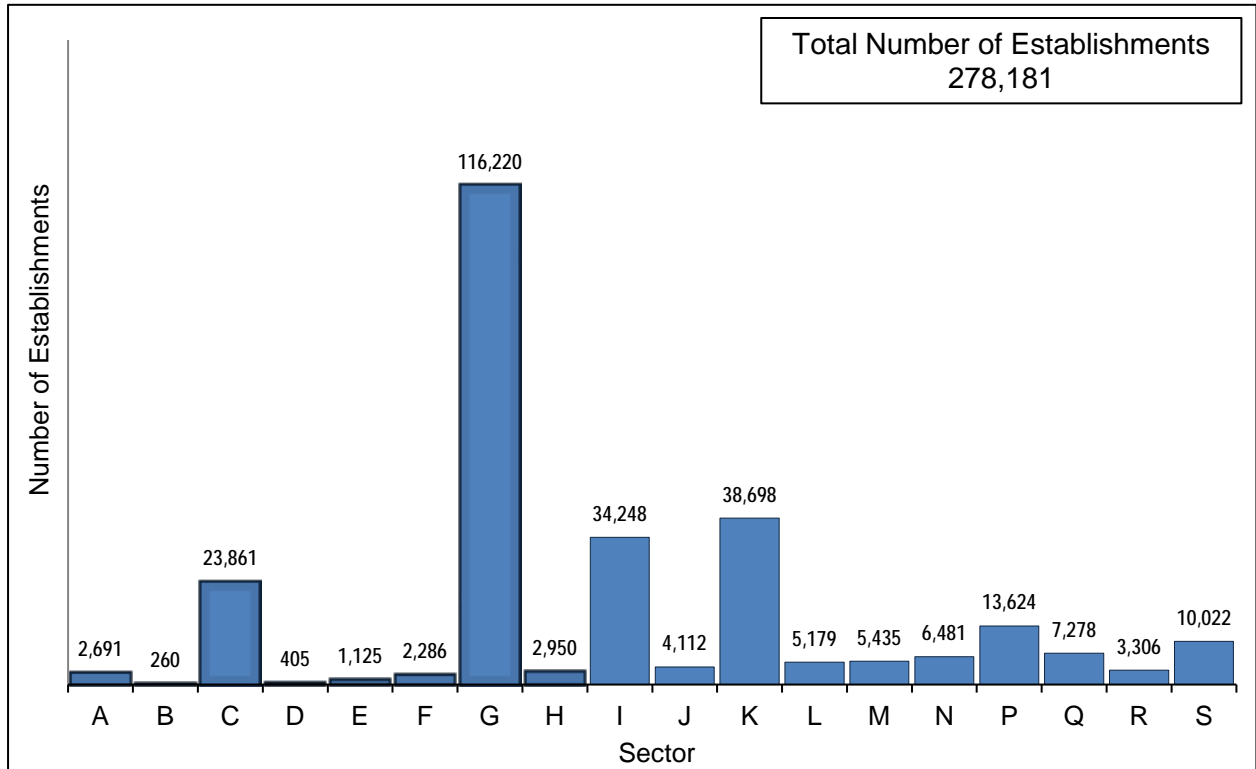
Management System  
ISO 9001:2015  
www.tuv.com  
ID 9108640991



PSA Complex, East Avenue, Diliman, Quezon City, Philippines 1101  
Telephone: (632) 938-5267  
[www.psa.gov.ph](http://www.psa.gov.ph)

and Accommodation and Food Service Activities with 34,248 (12.3%) establishments. On the other hand, Mining and Quarrying reported the least with 260 (0.1%) establishments. (Figure 1 and Table 1)

Figure 1. Distribution of Establishments by Sector: Philippines, 2019



Source: Philippine Statistics Authority, 2019 ASPBI (Preliminary Results)

Table B. Industry Code and Industry Description

A	Agriculture, Forestry and Fishing	G	Wholesale and Retail Trade; Repair of Motor Vehicles and Motorcycles	M	Professional, Scientific and Technical Activities
B	Mining and Quarrying	H	Transportation and Storage	N	Administrative and Support Service Activities
C	Manufacturing	I	Accommodation and Food Service Activities	P	Education
D	Electricity, Gas, Steam and Air Conditioning Supply	J	Information and Communication	Q	Human Health and Social Work Activities
E	Water Supply; Sewerage, Waste Management and Remediation Activities	K	Financial and Insurance Activities	R	Arts, Entertainment and Recreation
F	Construction	L	Real Estate Activities	S	Other Service Activities

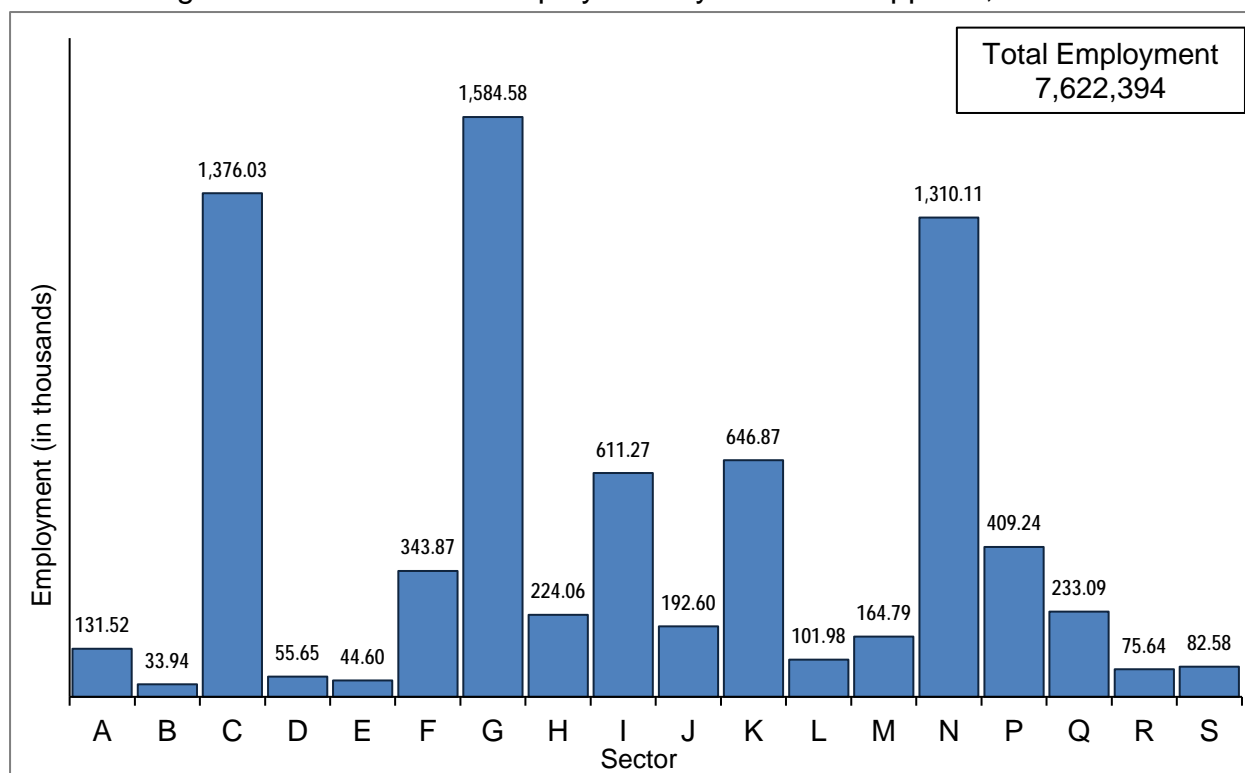
Source: 2009 Philippine Standard Industrial Classification (PSIC)

## Wholesale and Retail Trade; Repair of Motor Vehicles and Motorcycles employed the highest number of workers

Total employment reached a total of 7,622,394 workers in 2019. Of the total, 7,536,079 workers (98.9%) were paid employees, while the remaining were working owners and unpaid workers. (Tables A and 1)

By sector, Wholesale and Retail Trade; Repair of Motor Vehicles and Motorcycles, which recorded the highest number of establishments in 2019, was also the top sector in terms of the total number of workers. It employed a total of 1,584,579 workers (20.8%). Mining and Quarrying, on the other hand, registered the lowest with 33,941 (0.4%) workers. (Figure 2 and Table 1)

Figure 2. Distribution of Employment by Sector: Philippines, 2019



Note: Refer to Table B for the industry code and description.

Source: Philippine Statistics Authority, 2019 ASPBI (Preliminary Results)

The average number of workers was recorded at 27 per establishment in 2019. (Tables A and 2)

Administrative and Support Service Activities sector posted the highest average of 202 workers per establishment, while the least was Other

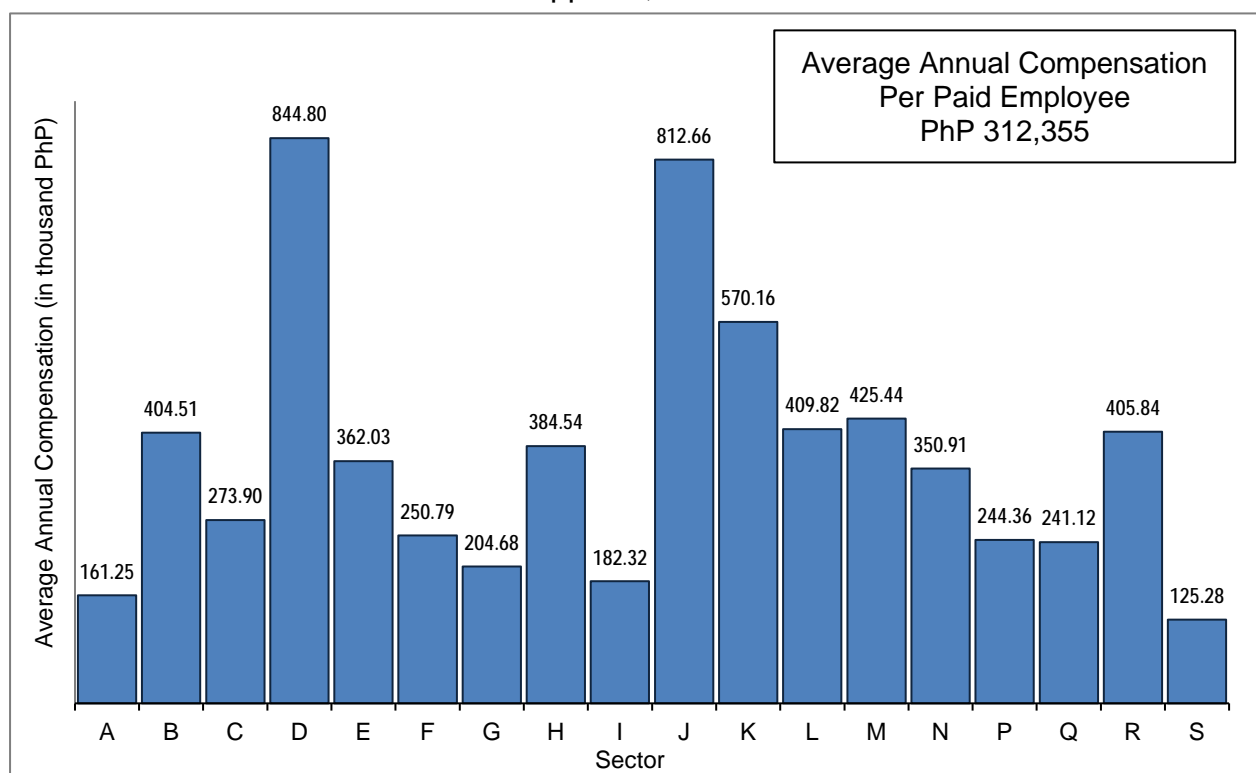
Service Activities sector with an average of eight workers per establishment. (Table 2)

### Administrative and Support Service Activities paid the highest total compensation

In 2019, the total compensation paid by establishments amounted to PhP 2.35 trillion. This translates to an average annual compensation of PhP 312.35 thousand per paid employee. (Tables A and 2)

Among sectors, Electricity, Gas, Steam and Air Conditioning Supply paid the highest average compensation at PhP 844.80 thousand annually per paid employee. This was closely followed by Information and Communication with an average annual compensation of PhP 812.66 thousand per paid employee. On the other hand, employees in Other Service Activities were paid the lowest at PhP 125.28 thousand annually per paid employee. (Figure 3 and Table 2)

Figure 3. Average Annual Compensation of Paid Employees by Sector: Philippines, 2019



Note: Refer to Table B for the industry code and description.  
 Source: Philippine Statistics Authority, 2019 ASPBI (Preliminary Results)

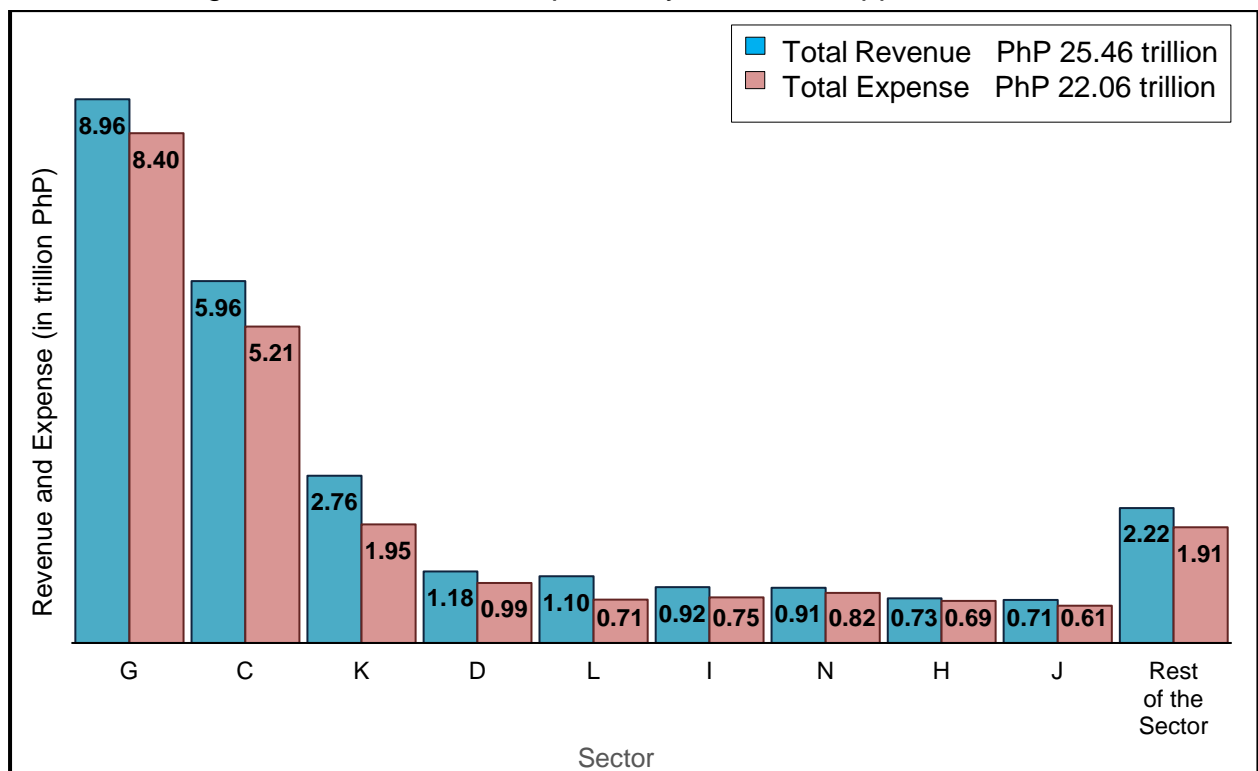
**Wholesale and Retail Trade; Repair of Motor Vehicles and Motorcycles contributed the highest share to total revenue and expense**

The total revenue generated by the establishments reached PhP 25.46 trillion, while the total expense incurred amounted to PhP 22.06 trillion in 2019. (Tables A and 1)

Wholesale and Retail Trade; Repair of Motor Vehicles and Motorcycles contributed the highest share to the total revenue of the economy which amounted to PhP 8.96 trillion (35.2%). This sector also shared the highest total expense of PhP 8.40 trillion (38.1%). (Figure 4 and Table 1)

On the other hand, Other Service Activities sector had the lowest contribution to the total revenue and total expense amounting to PhP 49.43 billion (0.2%) and PhP 43.37 billion (0.2%), respectively. (Figure 4 and Table 1)

Figure 4. Revenue and Expense by Sector: Philippines, 2019



Note: Refer to Table B for the industry code and description.  
 Source: Philippine Statistics Authority, 2019 ASPBI (Preliminary Results)

## **Real Estate Activities recorded the highest return**

Revenue per expense ratio was recorded at 1.15 in 2019. This indicates that for every peso spent, a corresponding revenue of 1.15 pesos was generated.

Among the sectors, Real Estate Activities posted the highest revenue per expense ratio at 1.54, which was higher than the national figure. On the other hand, Transportation and Storage had the lowest revenue-expense ratio of 1.06. (Tables A and 2)

## **Manufacturing received the highest subsidy**

Total subsidy received by establishments in 2019 amounted to PhP 80.96 billion.

Among the sectors that received subsidies, Manufacturing received the highest subsidy of PhP 37.12 billion (45.8%). On the other hand, Mining and Quarrying received the least subsidy of PhP 1.15 million (0.001%). (Table 1)

**DENNIS S. MAPA, Ph.D.**

Undersecretary

National Statistician and Civil Registrar General