

# LABOR TURNOVER STATISTICS

## National Capital Region

4th Quarter 2019

04

### Accession Rate



**6.6%**

or **66** were hired due to either business expansion or replacement of separated workers

### Separation Rate



**4.7%**

or **47** were either laid-off or quit their jobs

### Labor Turnover Rate



**1.9%**

or **19** workers were added to the establishments' workforce

FOR EVERY 1,000 EMPLOYED PERSONS

### LABOR TURNOVER BY SECTOR

#### Agriculture



**-2.8%**

#### Industry



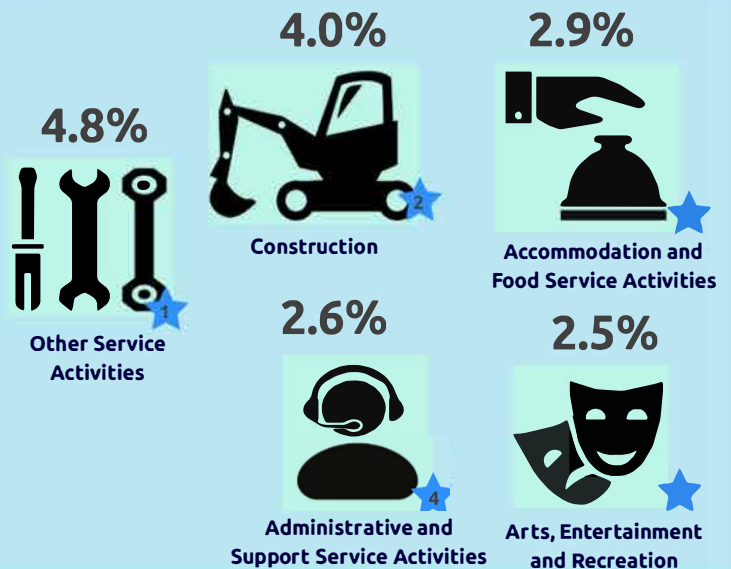
**2.5%**

#### Services



**1.8%**

### TOP 5 INDUSTRIES IN TERMS OF LABOR TURNOVER



### TOP INDUSTRIES WITH HIGH ACCESSIONS DUE TO EXPANSION OR REPLACEMENT

#### EXPANSION

**5.6%** Administrative and Support Service Activities

**5.1%** Construction

**4.6%** Mining and Quarrying

#### REPLACEMENT

**5.9%** Accommodation and Food Service Activities

**5.9%** Other Service Activities

**4.1%** Human Health and Social Work Activities

### TOP REASONS FOR LAY-OFF AND RESIGNATION OF WORKERS

#### Employer-initiated (Lay-off)

**40.1%** Project Completion

**24.6%** AWOL

**7.6%** Reorganization/Downsizing

#### Employee-initiated (Resignation)

**34.5%** Hired by another Company

**21.4%** Family Consideration

**12.8%** To Work Abroad

### TOP VACANCIES BY INDUSTRY AND OCCUPATION

#### INDUSTRY

**32.0%**

Administrative and Support Service Activities

**16.6%**

Wholesale and Retail Trade; Repair of Motor Vehicles, Motorcycles

**10.1%**

Manufacturing

#### OCCUPATION

**23.1%**

Service and Sales Workers

**21.3%**

Professionals

**18.6%**

Technicians and Associate Professionals

Source: Philippine Statistics Authority, Labor Turnover Survey.



For Technical Inquiries  
edsd.staff@psa.gov.ph



Visit us on  
www.psa.gov.ph



Follow us on Twitter  
@PSAgovph



Follow us on Facebook  
PhilippineStatisticsAuthority



COE