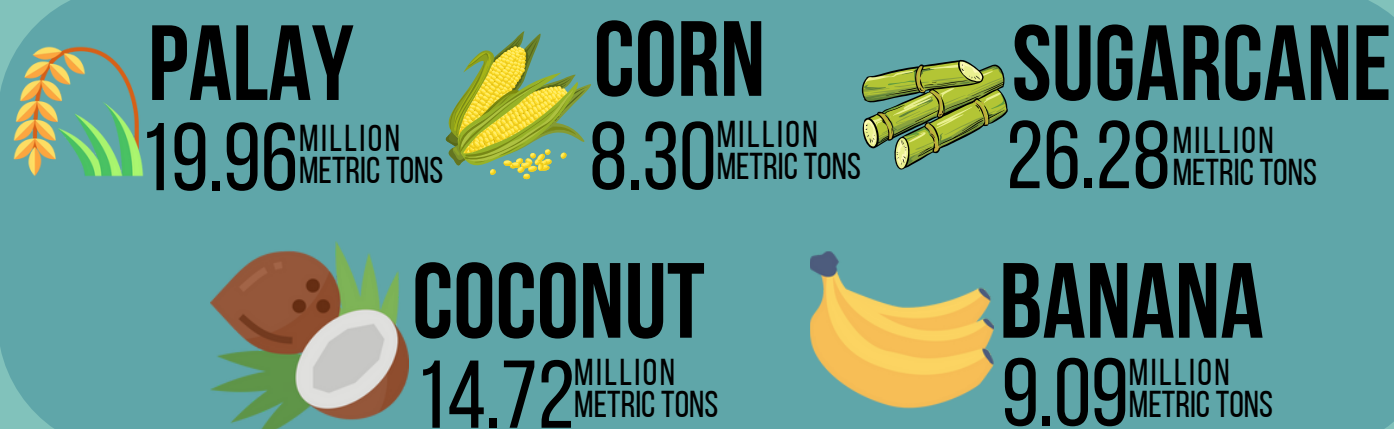


COMPONENT 2: ENVIRONMENTAL RESOURCES AND THEIR USE

This component compiles statistics focusing on measuring stocks and changes in stocks of environmental resources and their use for production and consumption. Statistics on this component are linked to the Sustainable Development Goals (SDGs):

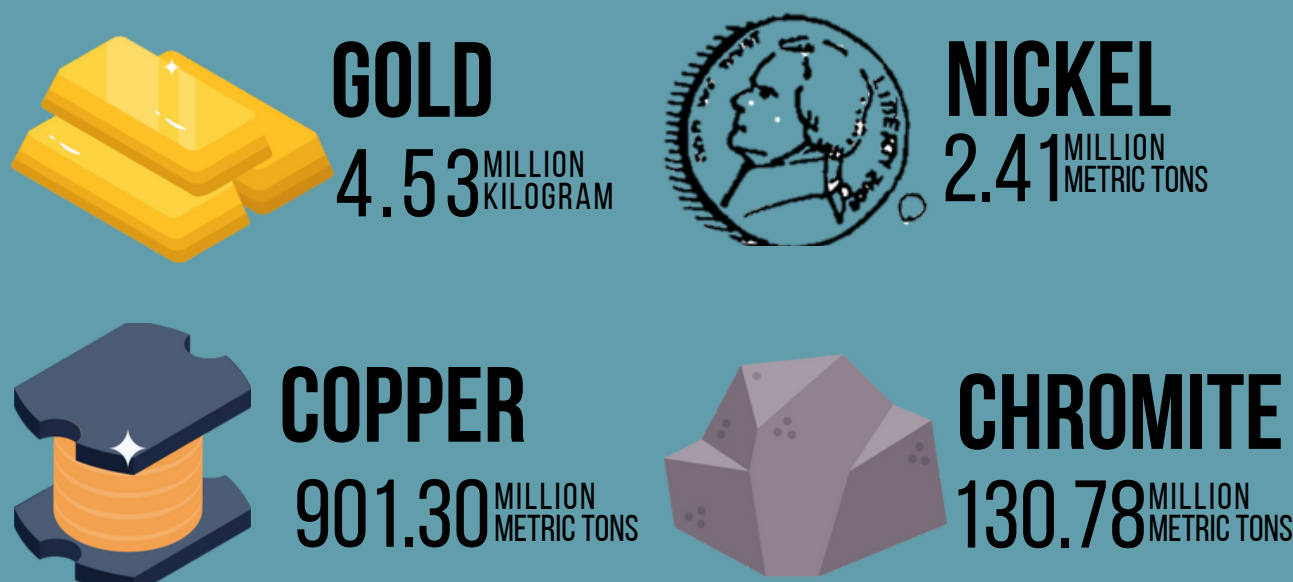


CROPS VOLUME OF PRODUCTION, 2021



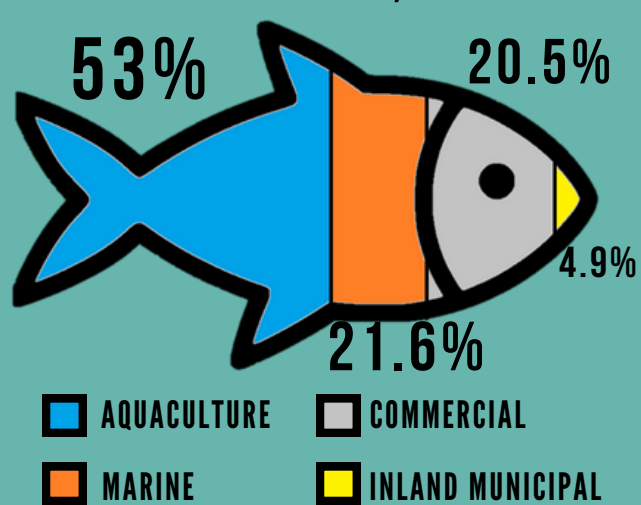
Source: Philippine Statistics Authority

MINERAL RESOURCES AND RESERVES, 2021



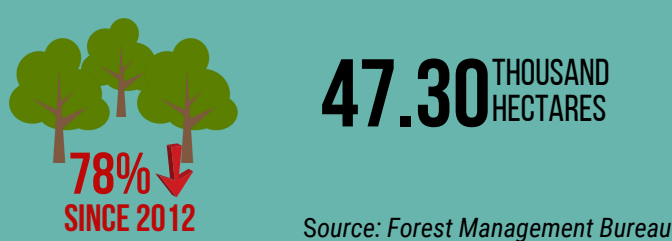
Source: Mines and Geosciences Bureau

DISTRIBUTION OF FISHERIES PRODUCTION, 2021



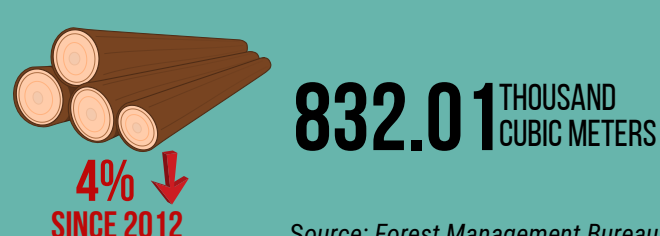
Source: Philippine Statistics Authority

AREA REFORESTED, 2020



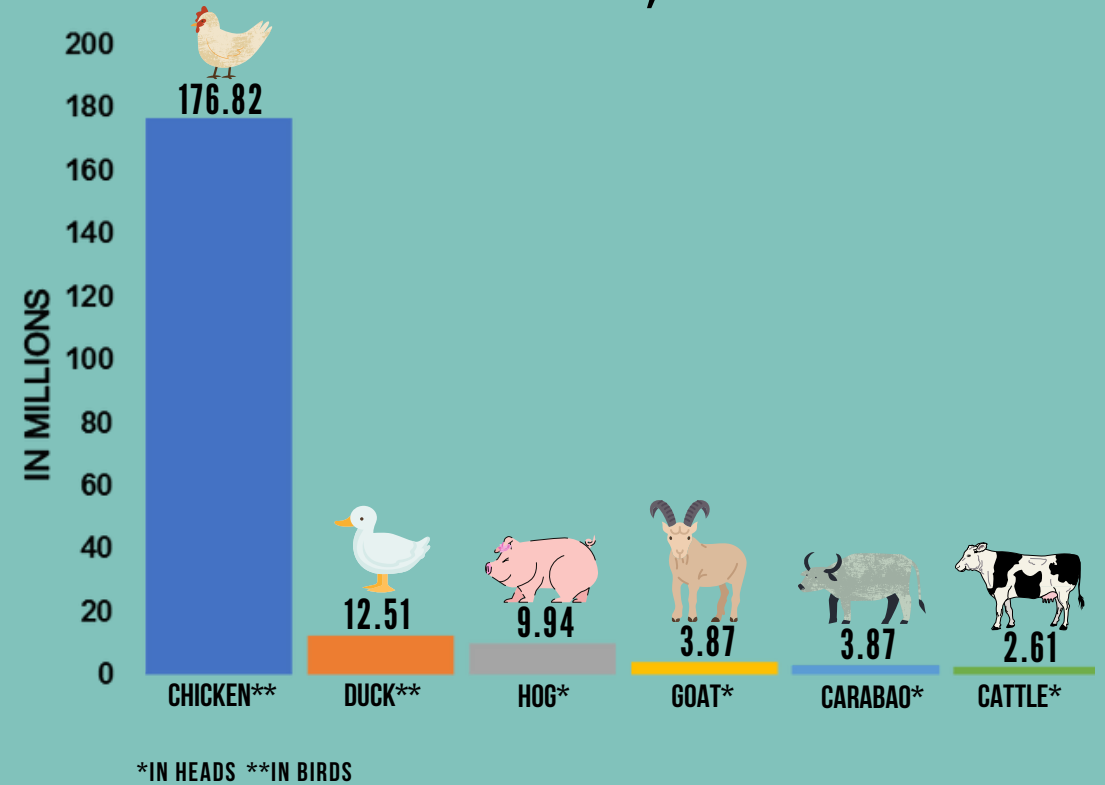
Source: Forest Management Bureau

LOG PRODUCTION, 2020



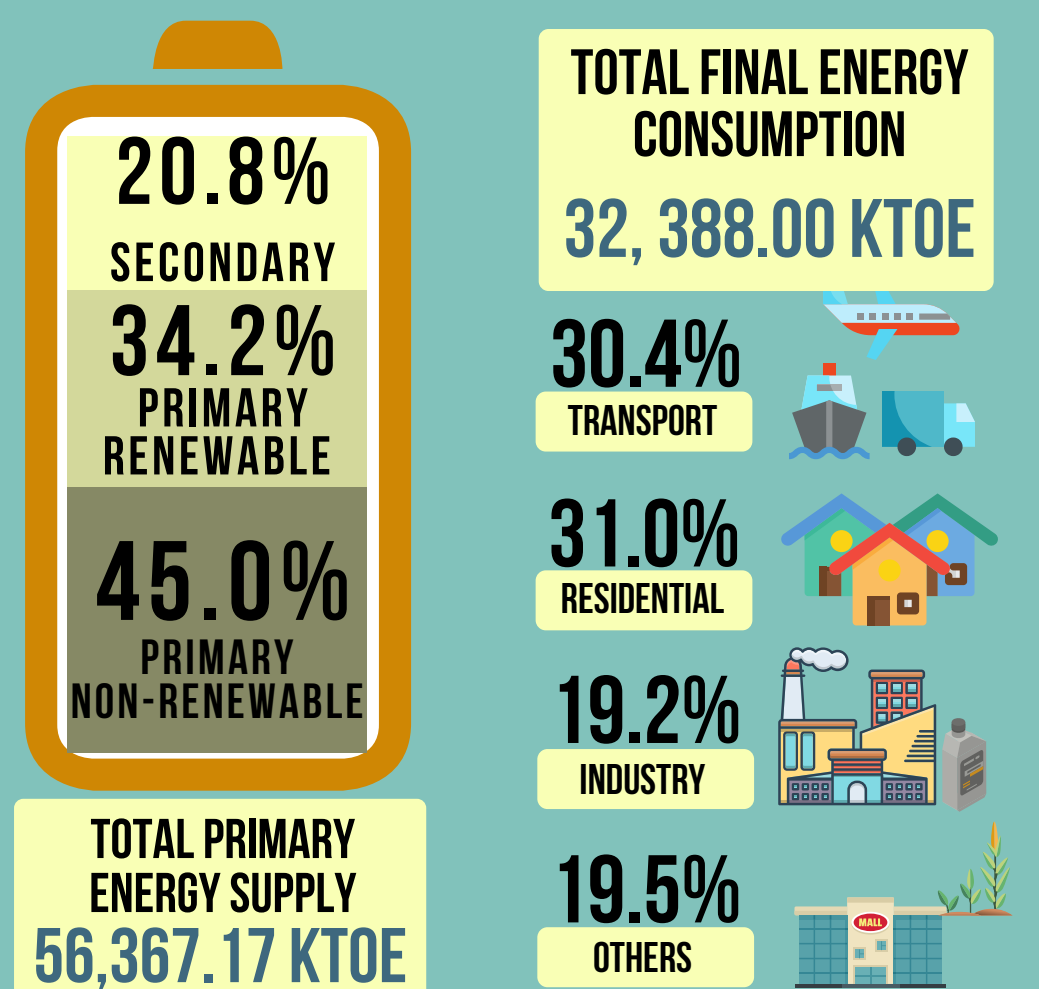
Source: Forest Management Bureau

NUMBER OF POULTRY AND LIVESTOCK INVENTORY, 2021



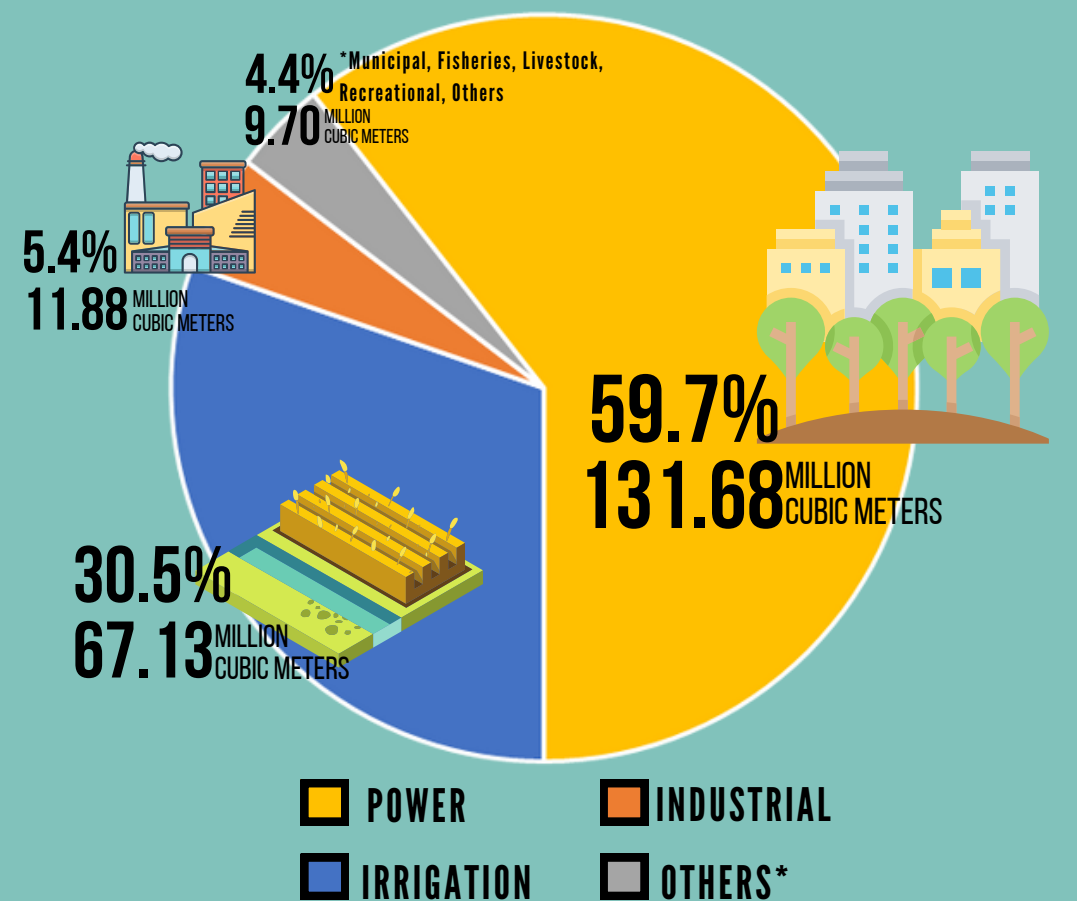
Source: Philippine Statistics Authority

ENERGY BALANCE TABLE, 2020



Source: Department of Energy

TOTAL WATER ALLOCATED BY USE, 2020



Source: National Water Resources Board