

The **Compendium of Philippine Environment Statistics (CPES)** is a compilation of statistical information collected from various government agencies and statistical publications. It is an adoption of the UN Framework for the Development of Environment Statistics (FDES) 2013.

COMPONENT 4: EXTREME EVENTS AND DISASTERS

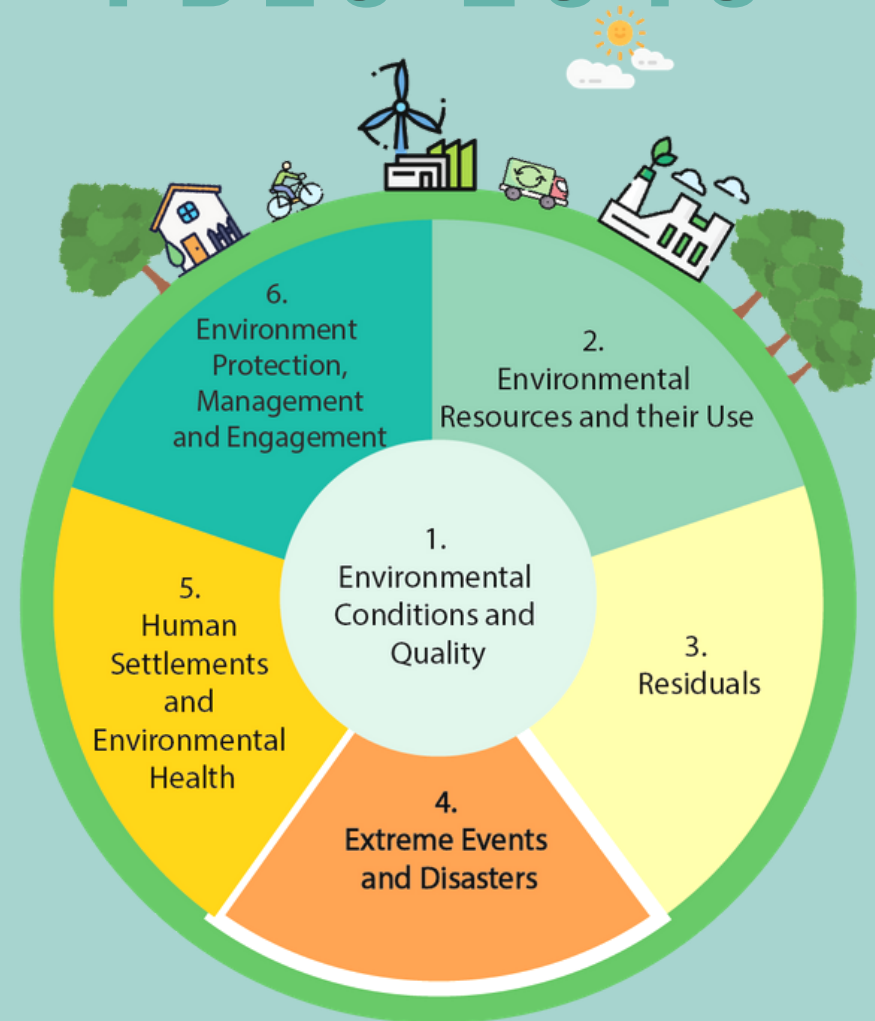
¹This component compiles statistics on the occurrence of extreme events and disasters and their impacts on human well-being and the infrastructure of the human subsystem. Statistics on this component are linked to the Sustainable Development Goals (SDGs):



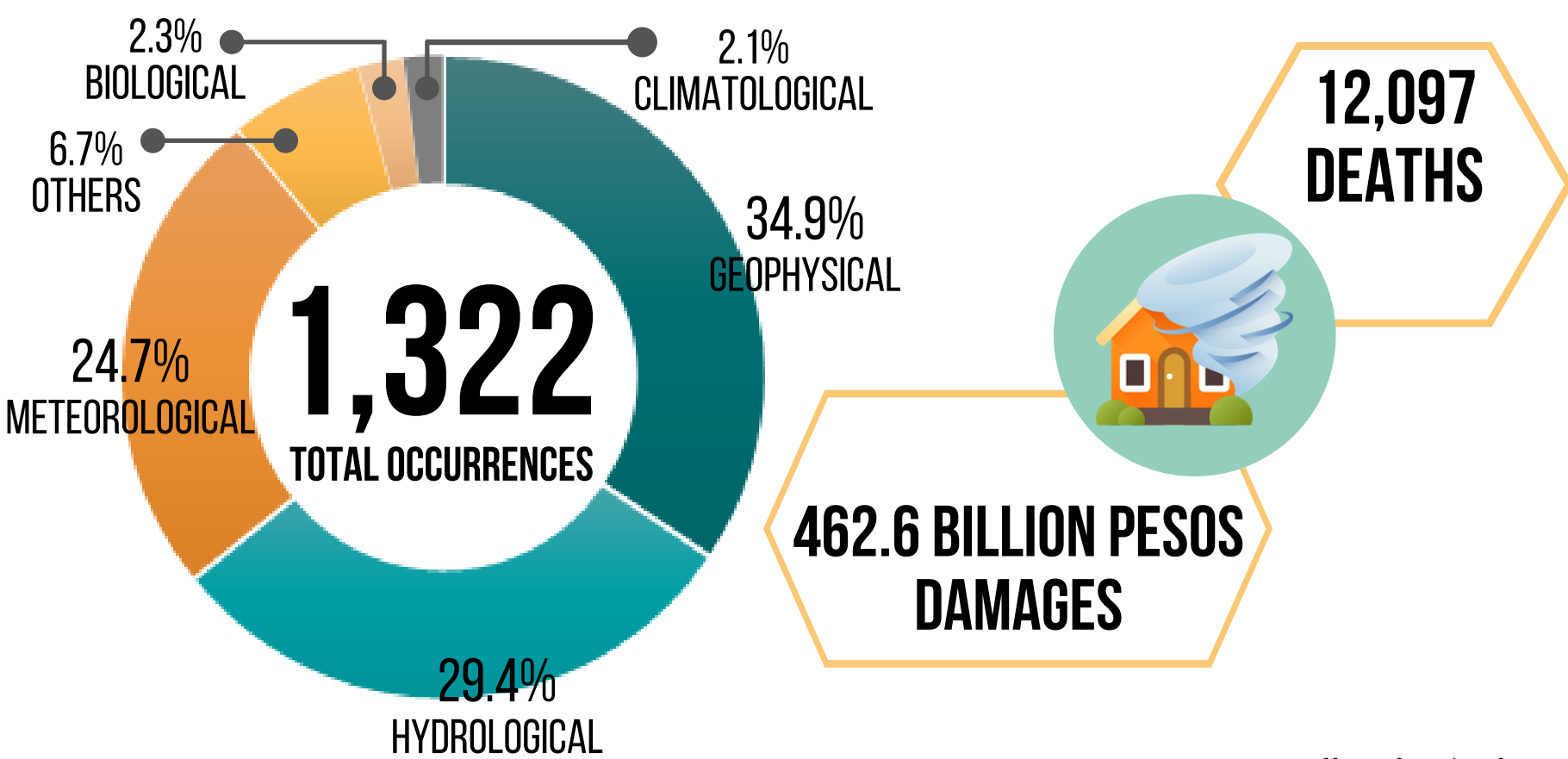
¹ based on UN FDES 2013

FRAMEWORK FOR THE DEVELOPMENT OF ENVIRONMENT STATISTICS

FDES 2013

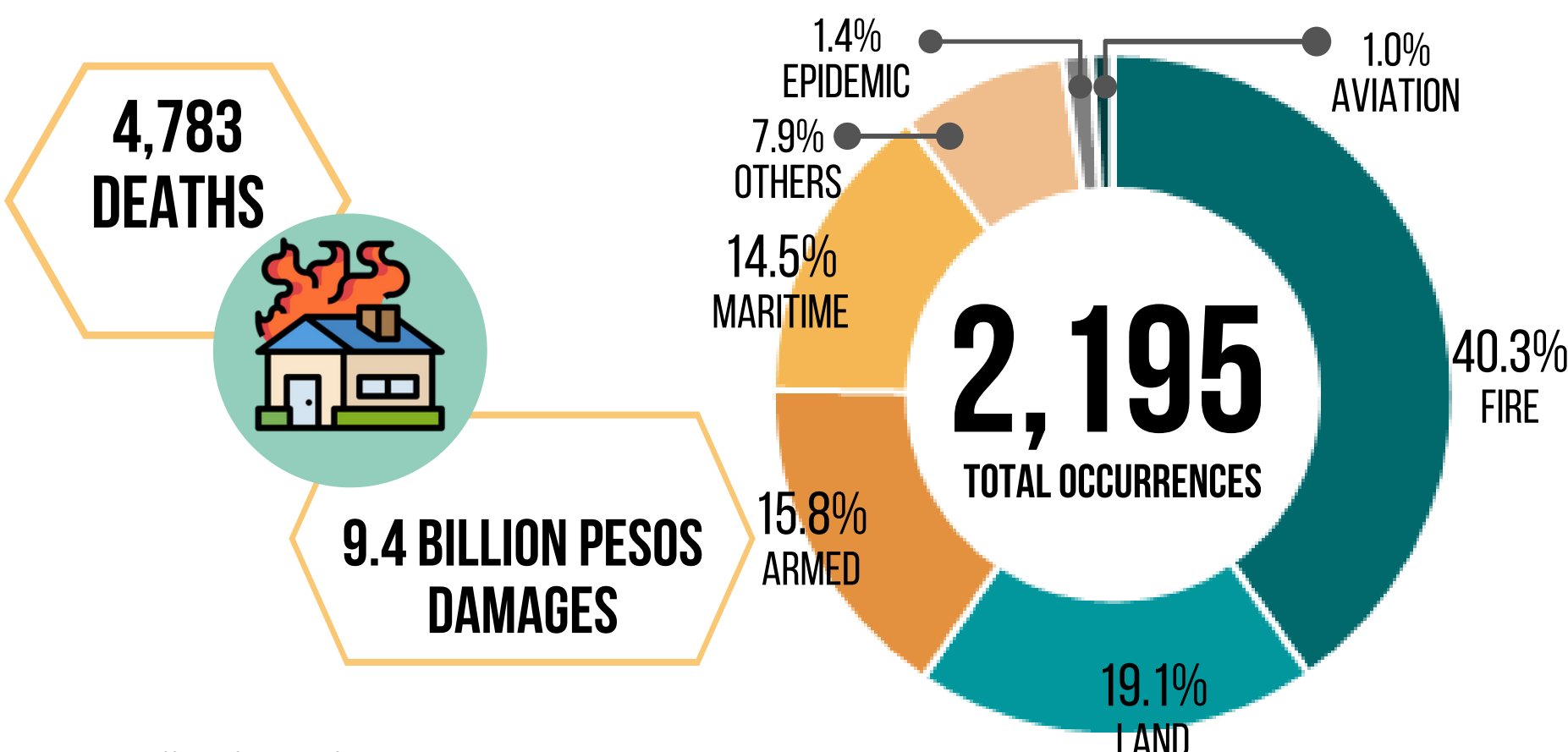


NATURAL EXTREME EVENTS AND DISASTERS, 2010 TO 2019



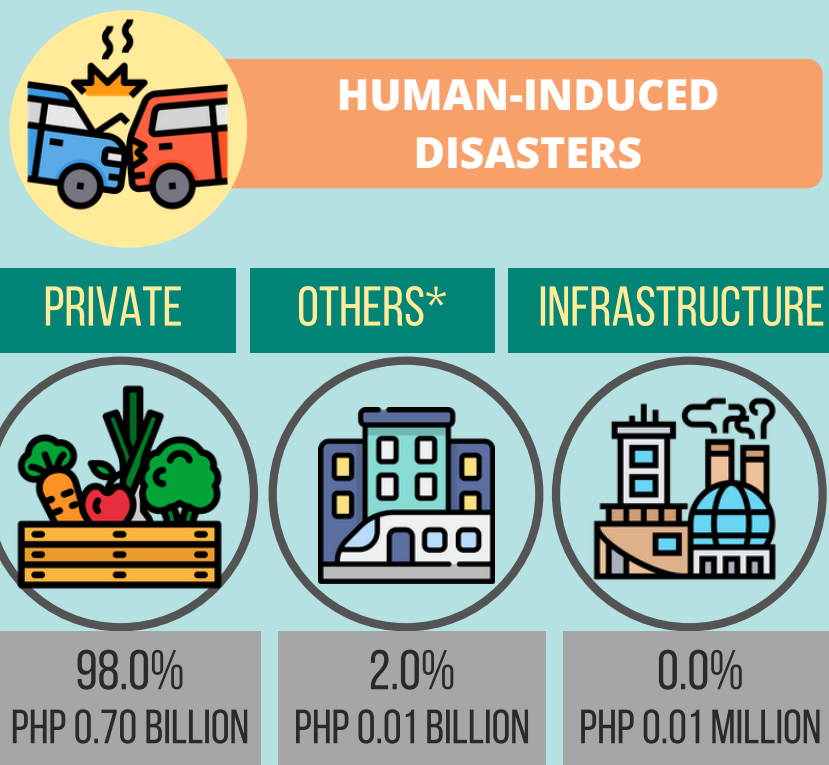
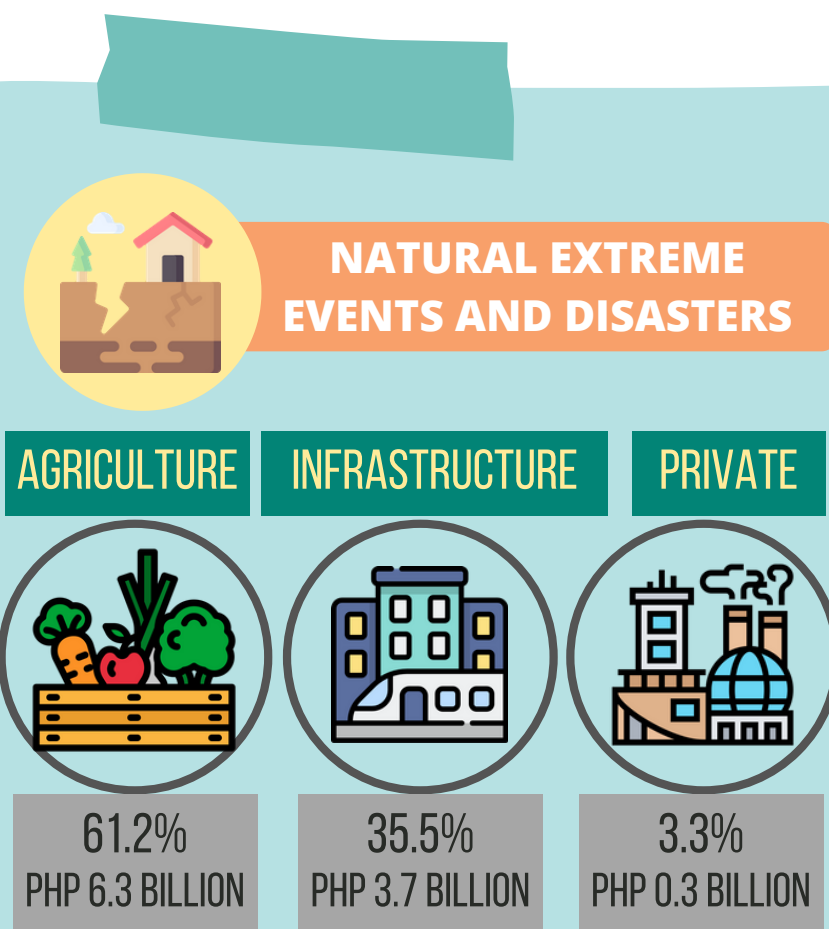
Source: Office of Civil Defense

HUMAN-INDUCED DISASTERS, 2010 TO 2019



Source: Office of Civil Defense

DAMAGES TO PROPERTIES, 2019



*includes damages to public market caused by fire incidents

Source: Office of Civil Defense