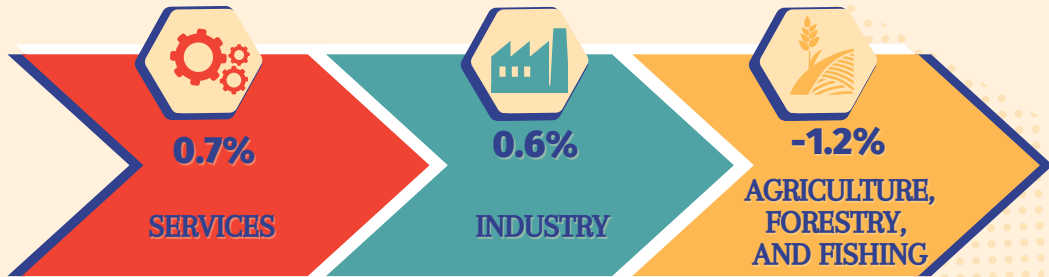


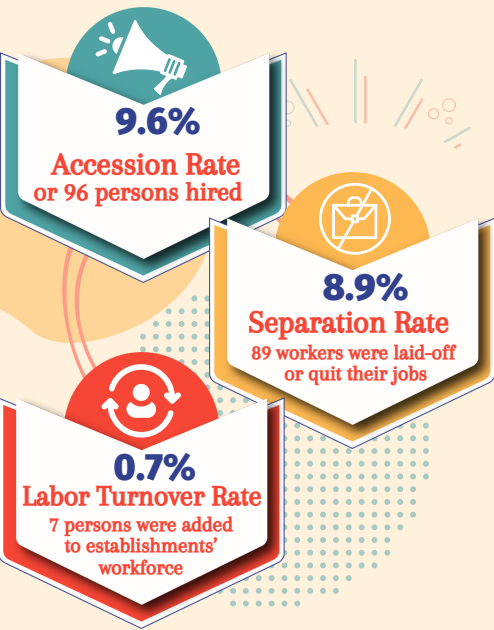
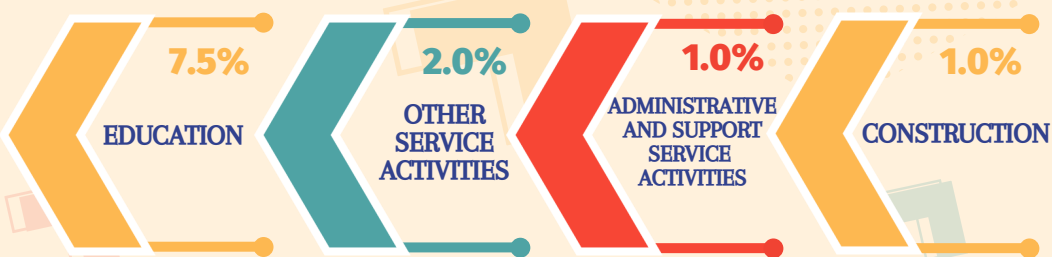
LABOR TURNOVER STATISTICS

National Capital Region 3rd Quarter 2021

LABOR TURNOVER RATE BY SECTOR



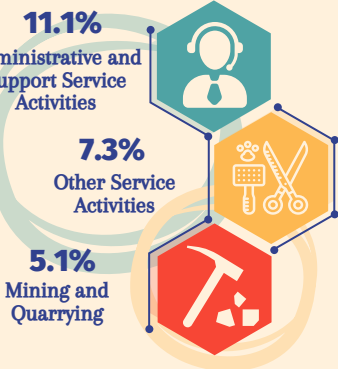
TOP INDUSTRIES WITH HIGHEST LABOR TURNOVER RATES:



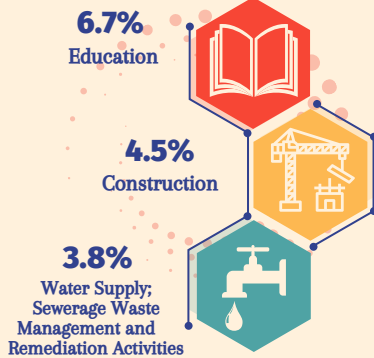
*For every 1,000 employed persons

TOP 3 INDUSTRIES WITH HIGHEST ACCESSION RATE BY REASON

BUSINESS EXPANSION

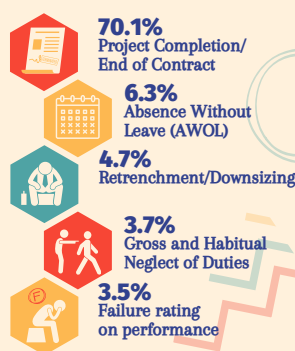


REPLACEMENT

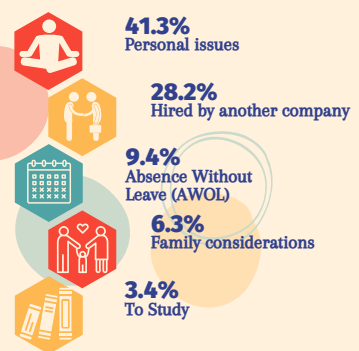


TOP 5 REASONS FOR SEPARATION OF WORKERS

EMPLOYER-INITIATED

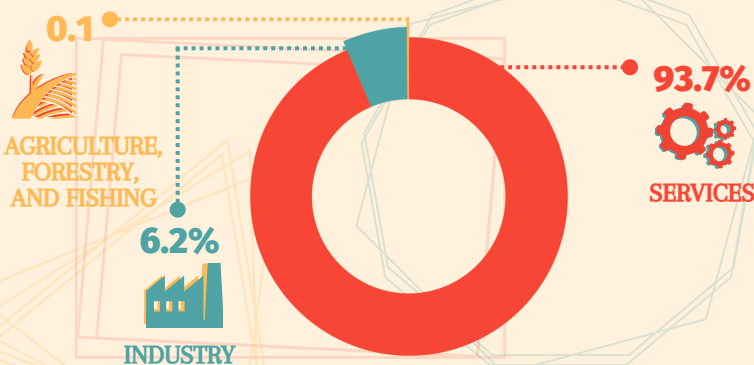


EMPLOYEE-INITIATED



Total Vacancies: 92,400

PERCENT DISTRIBUTION OF JOB VACANCIES IN ESTABLISHMENTS BY SECTOR



Source: Labor Turnover Survey, Philippines Statistics Authority

TOP 3 INDUSTRIES AND MAJOR OCCUPATIONS IN TERMS OF SHARE TO TOTAL JOB VACANCIES

