



The Survey on Information and Communication Technology (SICT) is one of the statistical activities undertaken by the Philippine Statistics Authority (PSA). It is conducted as a rider to the Annual Survey of Philippine Business and Industry (ASPBI).

Non-core ICT industries include all industries in the 2009 Philippine Standard Industrial Classification (PSIC) except industries under the Information and Communication section and some industries under the Manufacturing section, Wholesale and Retail Trade; Repair of Motor Vehicles and Motorcycles section, and Other Service Activities section.

Establishment



34,074

Total Establishments



98.2%

with owned and used computers and communication equipment in their business operations



95.3%

with internet access



33.2%

with website



with owned and used computers and communication equipment in their business operations

100%

For Sections:



Electricity, Gas, Steam and Air Conditioning Supply



Water Supply; Sewerage, Waste Management and Remediation Activities



Construction



Financial and Insurance Activities



Real Estate Activities



Administrative and Support Service Activities



Education



Human Health and Social Work Activities



with internet access

100%

For Sections:



Water Supply;
Sewerage, Waste
Management and
Remediation Activities



Construction



Real Estate Activities



Education



Human Health and
Social Work Activities



17.7%

with e-commerce
via the Internet



39.8%

with social media account



38.9%

with business transaction
via cellular mobile phone



Percentage of Establishments
Using Internet by Type of
Government Transaction

79.6%

Obtaining information from
government organizations

77.8%

Downloading or requesting
government forms

71.2%

Completing forms online or
sending the completed forms

55.9%

Making online payments to
government organizations

Employment



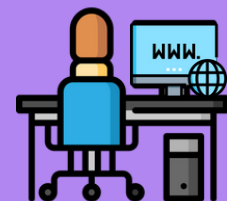
4,373,118

Non-core ICT Workers



44.0%

used computer
routinely at work



37.5%

used computer with
internet connection
routinely at work



For Technical Inquiries:
ssd.esss.staff@psa.gov.ph



Visit us at:
www.psa.gov.ph



Like us on Facebook
PhilippineStatisticsAuthority



Follow us on Twitter:
[@PSAgovph](https://twitter.com/PSAgovph)