



# SEASONALLY ADJUSTED RICE PRODUCTION and PRICES

APRIL - JUNE, 2012

Volume XIV No. 3

August 2012

This brief report features the deseasonalized or seasonally adjusted rice production and price data series from first quarter of 2006 to second quarter of 2012 using X-11 ARIMA. The effect of season has been removed from the original data to show at a glance the trend of rice production and prices without being hampered by seasonal movements.

## PRODUCTION

The seasonally adjusted palay production for the second quarter of 2012 was 4.49 million metric tons, higher by 6.02 percent from the 4.24 million metric tons output in the first quarter. Compared with the same period last year, this quarter's performance when deseasonalized was higher by 8.08 percent or 336 thousand metric tons. The increment was largely attributed to expanded harvest areas as a result of movement of harvests from the first quarter to second quarter of this year, "Early Wet Planting Program" of the government in Central Luzon and sufficient water supply.

## PRICES

The seasonally adjusted farmgate price of palay and retail price of rice for the second quarter of 2012 increased by 2.05 percent and 0.11 percent, respectively, from their first quarter levels. On the other hand, the seasonally adjusted wholesale price of rice for the second quarter of 2012, recorded a decrease of 0.33 percent from the previous quarter's level.

This quarter's deseasonalized prices at all market levels were higher than last year's price quotations.

Figure 1. Quarterly palay production, Philippines, 2006-2012

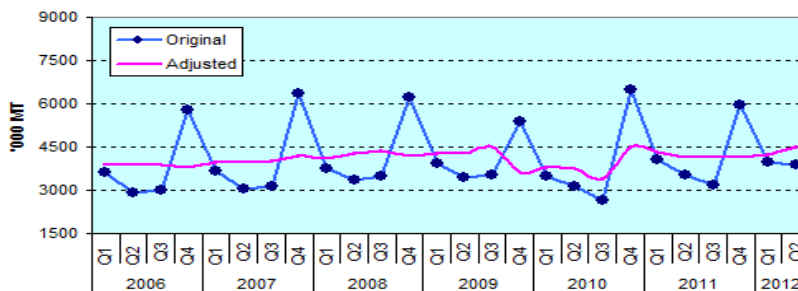


Figure 2. Quarterly farmgate prices of palay, Philippines, 2006-2012

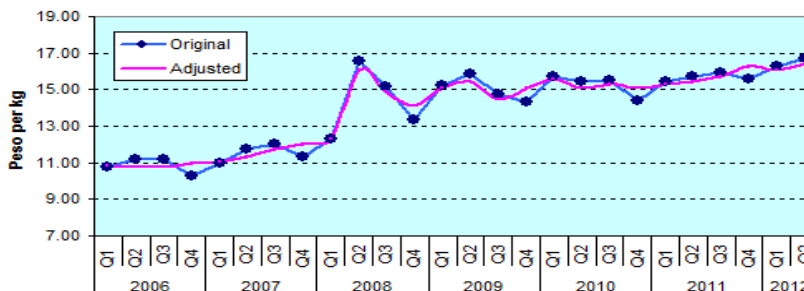


Figure 3. Quarterly wholesale prices of rice, Philippines, 2006-2012

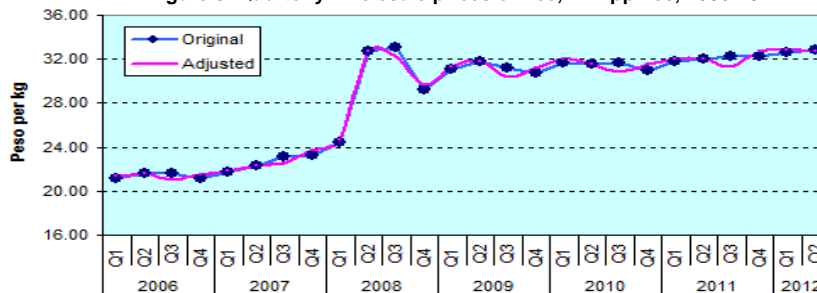
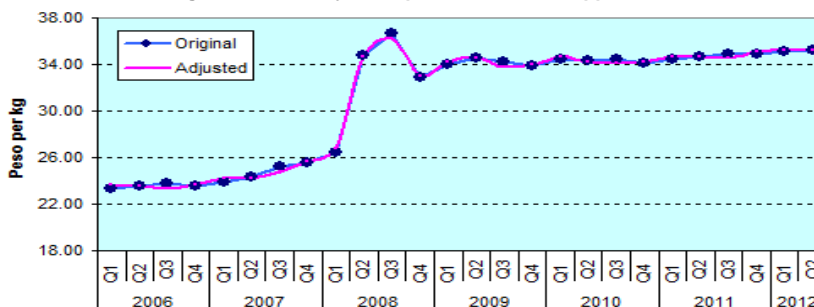


Figure 4. Quarterly retail prices of rice, Philippines, 2006-2012



\* Prepared by the TWG on Seasonal Adjustment of Time Series Data, Bureau of Agricultural Statistics, Department of Agriculture, Philippines. Telephone Nos. 371-2050; 371-2086 E-mail Address: rsrecide@bas.gov.ph