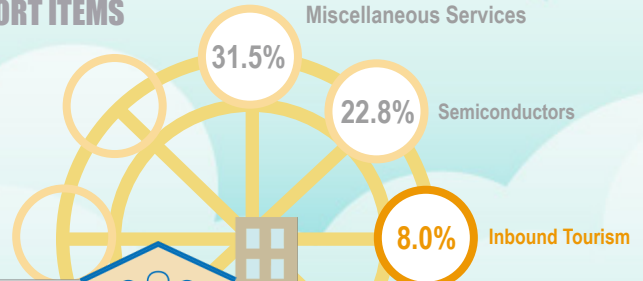
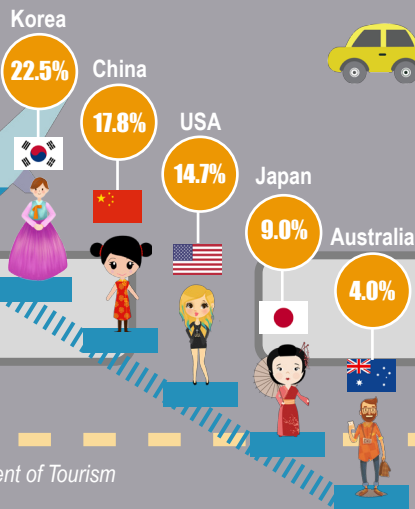


Tourism's total contribution to the Philippine Economy in 2018 was **PhP 2.2 trillion**, equivalent to **12.7%** of the Gross Domestic Product (GDP).

INBOUND TOURISM EXPENDITURE **RANKED 3RD** AMONG THE **BIGGEST** EXPORT ITEMS



TOP 5 TOURIST ARRIVALS TO PHILIPPINES BY COUNTRY OF RESIDENCE IN 2019



Source of basic data: Department of Tourism

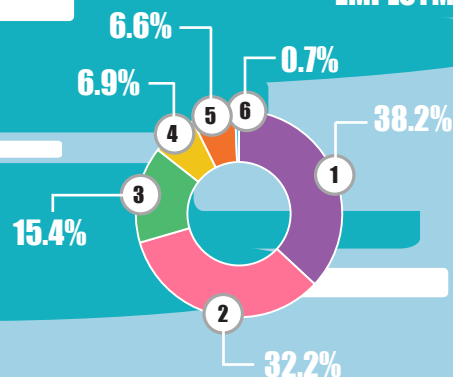
DOMESTIC TOURISM EXPENDITURE **PhP 3.2 TRILLION**
24.9% OF HOUSEHOLD FINAL CONSUMPTION EXPENDITURE (HFCE)

NUMBER OF PERSONS EMPLOYED IN THE TOURISM INDUSTRIES

5.4 MILLION

130 out of 1,000 employed in tourism industries

EMPLOYMENT BY INDUSTRY



- 1 Passenger transport
- 2 Accommodation, food and beverage
- 3 Miscellaneous
- 4 Recreation, entertainment and cultural services
- 5 Retail trade on tourism
- 6 Travel agents, tour operations and tourism guides